

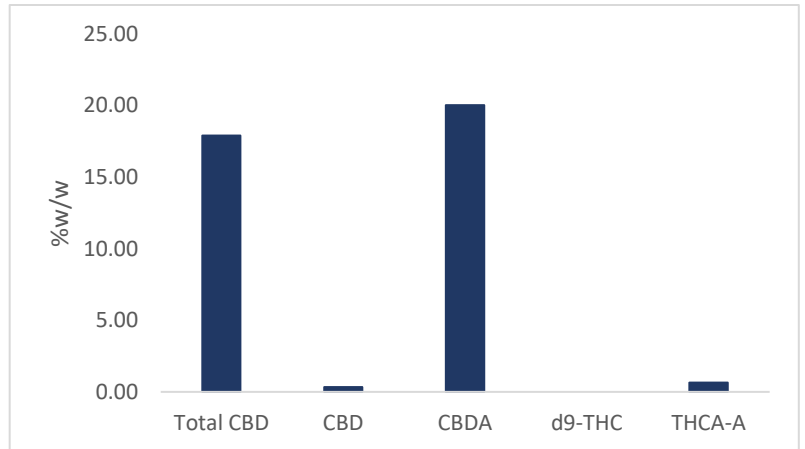
# Certificate of Analysis

<b>Client</b>	Goat Ridge Hemp	
<b>Contact</b>	Andy Dodge	
<b>Email:</b>	<a href="mailto:andydodge87@yahoo.com">andydodge87@yahoo.com</a>	
<b>Sample Name</b>	Sour Space Candy flower	
<b>Sample Type</b>	Dried Biomass	
<b>Intake Date</b>	30-Oct-19	
<b>Sample ID</b>	ES-191037DB	

<b>Approved By:</b>	Keith Griswold, M.S.	<b>Signature:</b>	<b>Date:</b>
<b>Title:</b>	Analytics & Formulations Dir.		10-Dec-2019

<b>Method:</b>	Cannabinoids-Limited Screen by HPLC-UV	<b>Analyst:</b>	<b>Analysis Date:</b>
<b>Method ID:</b>	NEP-CERF-5210 (internal)	KT	1-Nov-2019

	%W/W
<b>Total CBD</b>	17.90
<b>CBD</b>	0.33
<b>CBDA</b>	20.02
<b>d9-THC</b>	< 0.05
<b>THCA-A</b>	0.65



\*Total CBD/THC calculated using the molar ratio constant 0.877; results reported on a "dry basis."

<b>Method:</b>	Water Activity/Moisture Content	<b>Analyst:</b>	<b>Analysis Date:</b>
<b>Method ID:</b>	ASTM D8196-18	KT	1-Nov-2019

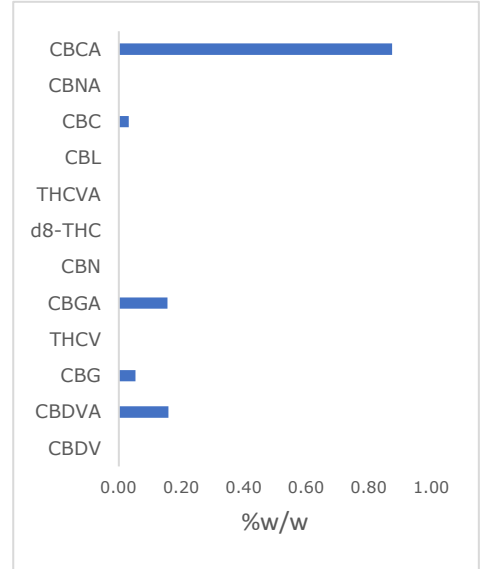
<b>Water Activity</b>	<b>0.531</b>	<b>Aw</b>
<b>Moisture Content</b>	<b>10.9</b>	<b>%</b>

<b>Comments:</b>	N/A
------------------	-----

<b>Testing Info:</b>	All testing is performed by either industry accepted methodology or internal methodology developed, validated and controlled under AOAC and ICH guidelines. Northeast Analytics is a participant in second party sponsored proficiency testing and is currently in the processing of receiving ISO/IEC 17025/2017 accreditation. Please direct any inquiries regarding results in this report for additional testing capabilities to <a href="mailto:analytics@northeastprocessing.com">analytics@northeastprocessing.com</a> .
----------------------	---

# Certificate of Analysis

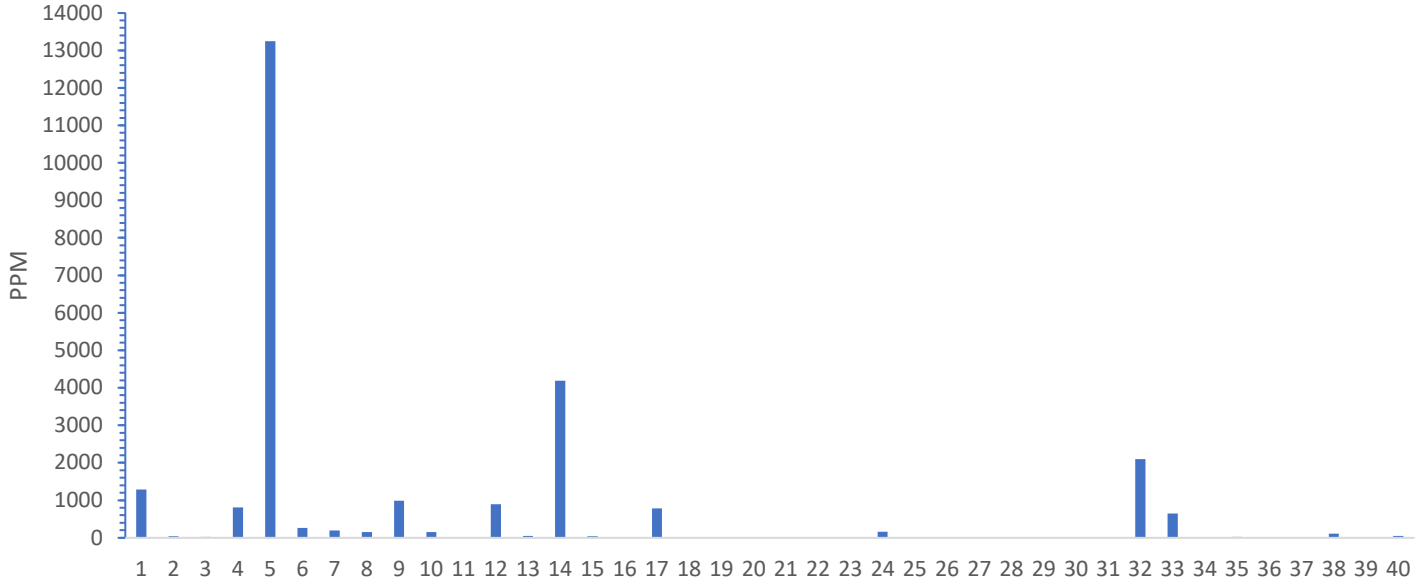
Method:	Cannabinoids-Full Screen by LCMS	Analyst:	KG	Analysis Date:	2-Oct-2019
Method ID:	NEP-CERF-7414 (internal)				
Cannabinoid	%W/W	MG/G			
CBDV	<0.01	< 0.1			
CBDVA	0.16	1.60			
CBG	0.05	0.54			
THCV	<0.01	< 0.1			
CBGA	0.16	1.57			
CBN	<0.01	< 0.1			
d8-THC	<0.01	< 0.1			
THCVA	<0.01	< 0.1			
CBL	<0.01	< 0.1			
CBC	0.03	0.33			
CBNA	<0.01	< 0.1			
CBCA	0.88	8.75			
<b>Total Minor Cannbinoids</b>	<b>1.28</b>	<b>%w/w</b>			



# Certificate of Analysis

<b>Method:</b>	Terpen Profile by HS-GCMS	<b>Analyst:</b>	<b>Analysis Date:</b>
<b>Method ID:</b>	NEP-CERF-5933 (internal)	ML	4-Oct-2019

## Terpene Profile



Analyte	PPM	Analyte	PPM		
1	a-Pinene	1282	21	Isoborneol	< 2
2	Camphene	38	22	Menthol	< 2
3	Sabinene-	27	23	endo-Borneol	18
4	b-Pinene	805	24	a-Terpineol	160
5	b-Myrcene	13243	25	g Terpeneol	< 2
6	.a-Phellandrene	258	26	Nerol	< 2
7	Carene	195	27	Pulegone	< 2
8	a-Terpinene	154	28	Geraniol	< 2
9	D-Limonene	985	29	Geranyl acetate	< 2
10	o-Cymene	148	30	a-Cedrene	< 2
11	Eucalyptol	18	31	(E)-b-Famesene	< 2
12	b-Ocimene	894	32	Caryophyllene	2095
13	gTerpinene	47	33	a-Humulene	645
14	Terpinolene	4184	34	trans-Neradiol	< 2
15	Sabinene Hydrate	41	35	cis-Neradiol	27
16	Fenchone	< 2	36	Valencene	< 2
17	Linalool	781	37	Guaiol	< 2
18	Fenchol	< 2	38	Caryophyllene Oxide	105
19	Isopulegol	< 2	39	Cedrol	< 2
20	Camphor	< 2	40	a-Bisabolol	46

\*Reporting limit is 2 parts per million; results reported on a dry basis.

Total	26196
Total in %W/W	2.62