

# Spring Classic Spectacular

Western Horsemanship (APHA/AQHA All Walk Trot, Small Fry AB)

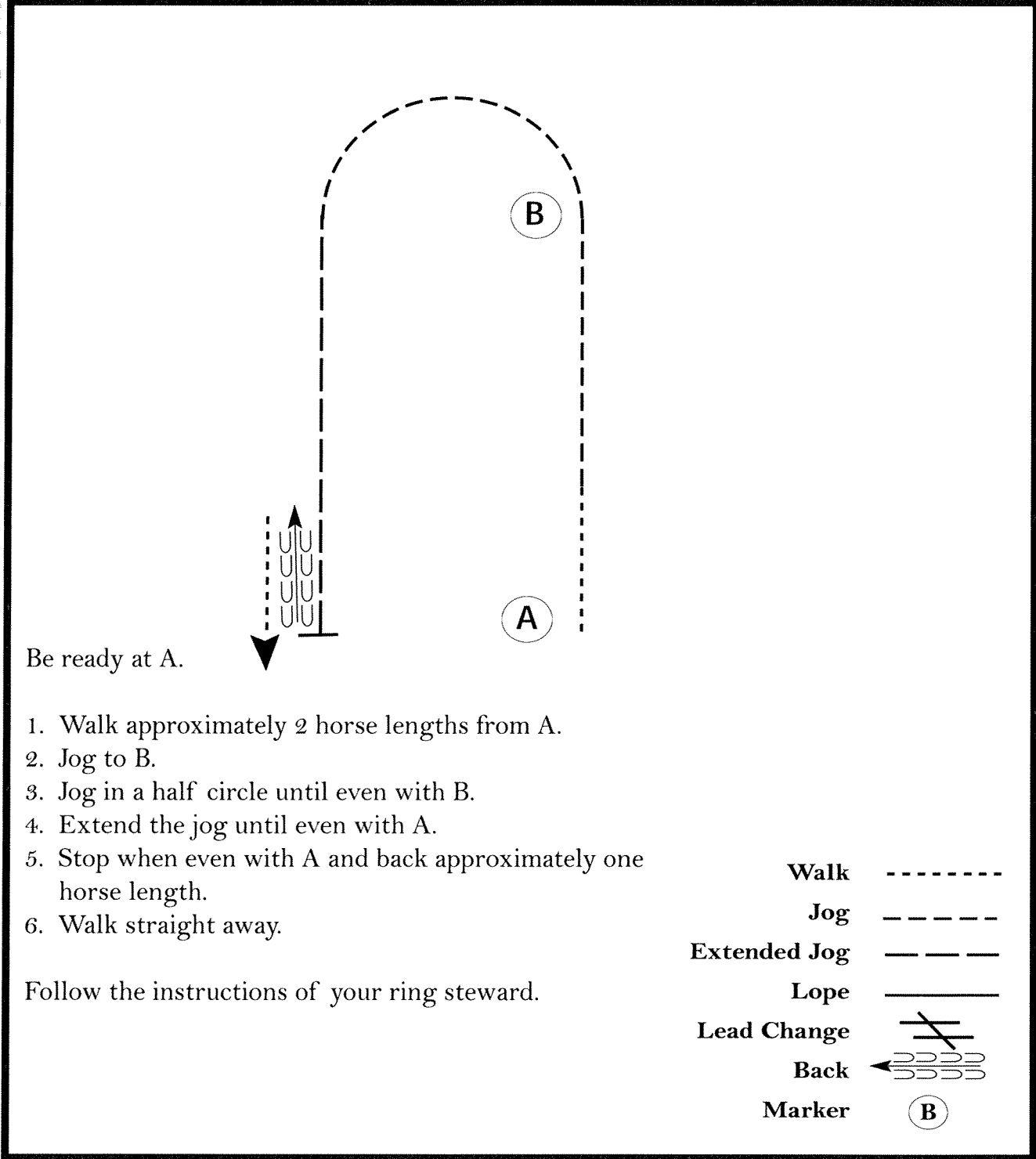
AQHA 752, 754, 756

Show Date: 6/5-7/26

APHA 340

www.HorseShowPatterns.com

www.HorseShowPatterns.com



[WH/WT-84]

Pattern Provided by:

*Judges*

# Spring Classic Spectacular

Western Horsemanship (APHA YTH/AM, AQHA YTH/AM/Select)

AQHA 762, 764, 766

Show Date: 6/5-7/26 APHA 344, 346, 350

www.HorseShowPatterns.com

www.HorseShowPatterns.com

Be ready at A.

1. When acknowledged, back approximately 2 horse lengths.
2. Perform a 360 degree turn to the right.
3. Walk to A.
4. Extend the jog to B.
5. Lope on the left lead in a half circle until even with B.
6. Perform a lead change. *Simple or Flying*
7. Lope on the right lead until even with A.
8. Break to a jog and exit pattern at a jog.

Pattern is over once you have jogged two strides past A.

Follow the instructions of your ring steward.

Walk	-----
Jog	- - - - -
Extended Jog	— — — —
Lope	—————
Lead Change	
Back	
Marker	(B)

[WH/3-83]

**Pattern Provided by:**  
*Judges*

# Spring Classic Spectacular

L1 Non Pro Horse

Western Horsemanship (APHA Novice YTH/AM, AQHA L1 YTH/AM)

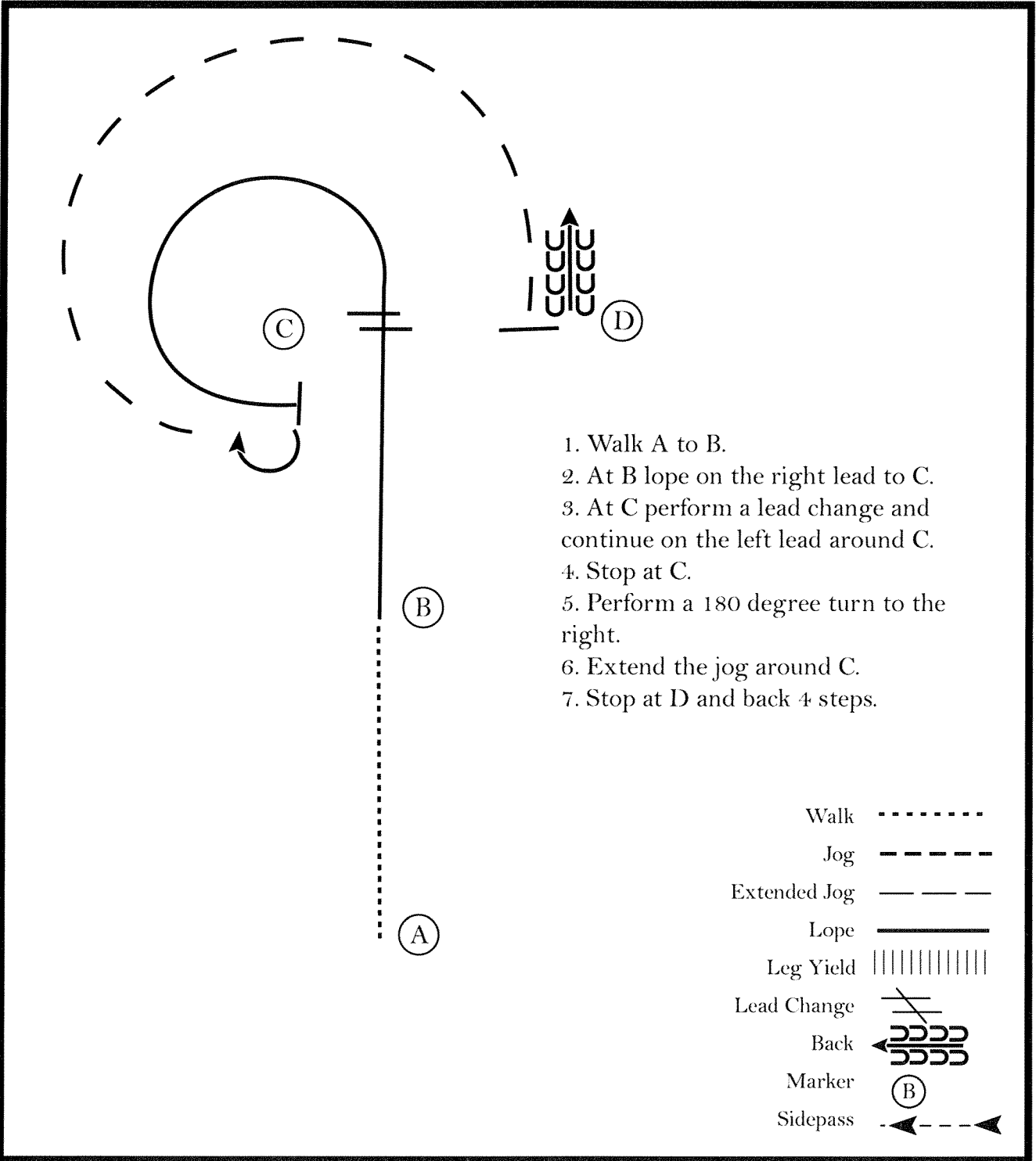
AQHA 753, 758, 760

Show Date: 6/5-7/26

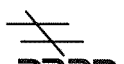

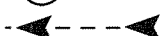
APHA 342, 348

www.HorseShowPatterns.com

www.HorseShowPatterns.com



1. Walk A to B.
2. At B lope on the right lead to C.
3. At C perform a lead change and continue on the left lead around C.
4. Stop at C.
5. Perform a 180 degree turn to the right.
6. Extend the jog around C.
7. Stop at D and back 4 steps.

- Walk ..... (dotted line)
- Jog - - - - - (dashed line)
- Extended Jog — — — — — (long dashed line)
- Lope ————— (solid line)
- Leg Yield ||||| (vertical lines)
- Lead Change 
- Back 
- Marker (B) (circle with B)
- Sidepass 

[WH/2-1]

Pattern Provided by:

*Judges*

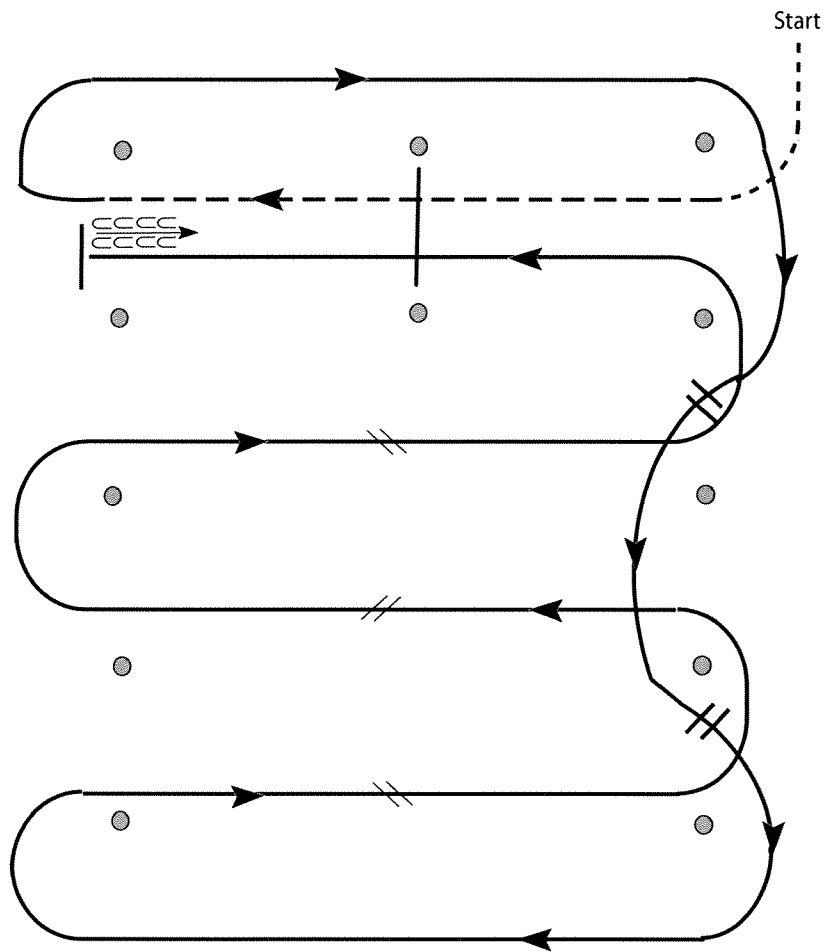
# Spring Classic Spectacular

Western Riding (APHA Green, AQHA L1 Open/YTH/AM)

AQHA 714, 716, 718 Show Date: 6/5-7/26 APHA 290

www.HorseShowPatterns.com

www.HorseShowPatterns.com



1. Walk, transition to jog, jog over log.
2. Transition to right lead and lope around end.
3. First line change.
4. Second line change. Lope around end of arena.
5. First crossing change.
6. Second crossing change.
7. Third crossing change.
8. Lope over log.
9. Lope, stop and back.

[WR/GP-4]

Pattern Provided by:

*Judges*

# Spring Classic Spectacular

## Western Riding (APHA/AQHA Open/YTH/AM)

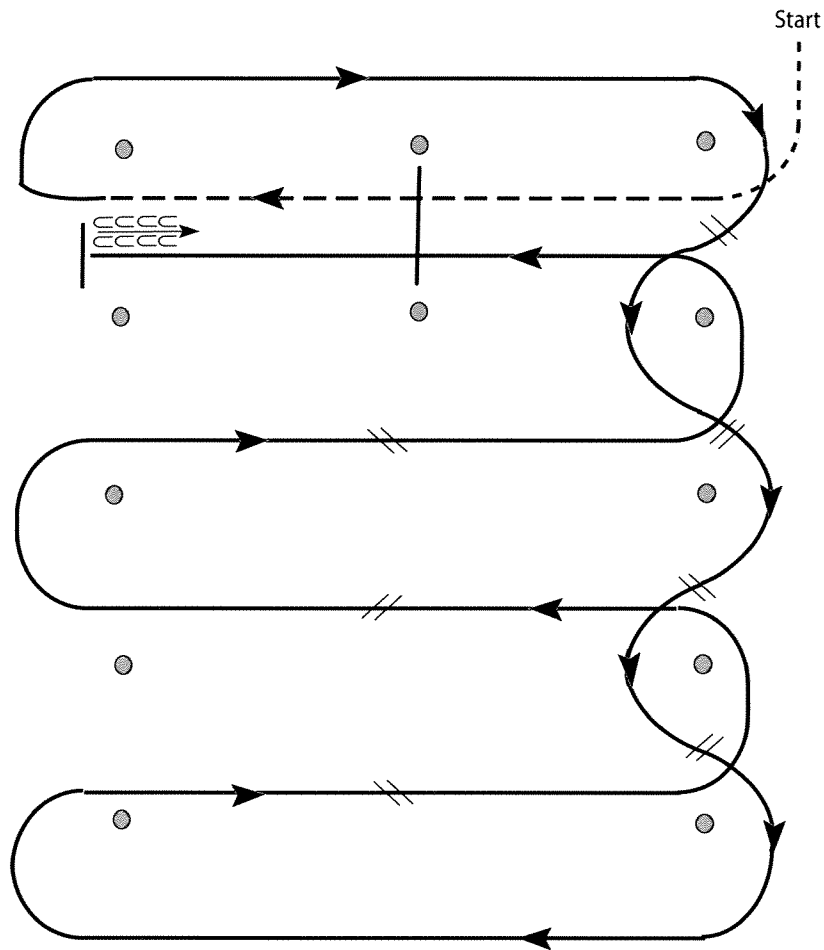
AQHA 720, 722, 724

Show Date: 6/5-7/26

APHA 292, 294, 296

www.HorseShowPatterns.com

www.HorseShowPatterns.com



1. Walk, transition to jog, jog over log.
2. Transition to right.
3. First line change.
4. Second line change.
5. Third line change.
6. Fourth line change.
7. First crossing change.
8. Second crossing change.
9. Third crossing change.
10. Lope over log.
11. Lope, stop and back.

[WR/OP-4]

Pattern Provided by:

*Judges*