

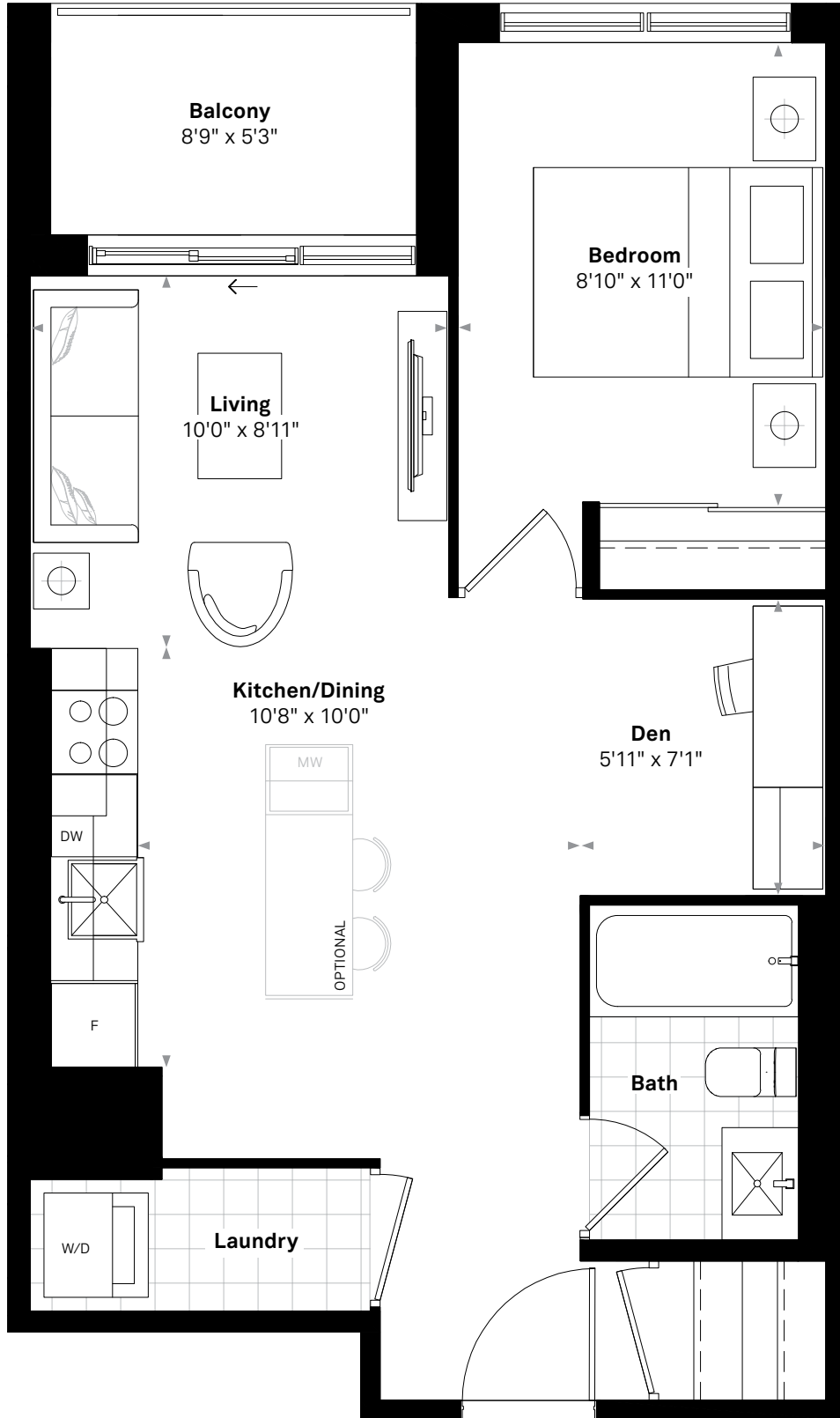
The Georgian

The Adam

1 BEDROOM+DEN, 1 BATH

601 SQ.FT. (INTERIOR) + 49 SQ.FT. (BALCONY)

Suites 507, 607



Floor plan and specifications apply to architectural plan 1B+D - A. All illustrations are artist's concept. Specifications, layouts and materials are subject to change without notice. All measurements and dimensions are approximate only and not guaranteed to be exact or to scale. Dimensions may vary with actual construction and according to elevation. These floorplans and room dimensions apply to the featured unit of this model type. Window size and location may vary. Tile patterns may vary. Plan may be built as the mirror image. Bulkheads required for mechanical purposes have not been indicated. Outdoor area will vary depending on the suite location within the building. Any reference or depictions, if any, to furniture, appliances, or other related items and equipment are conceptual in nature and not included in the agreement of purchase and sale. Nothing herein shall be relied upon as a representation or warranty, collateral agreement, or condition, express or implied, of the final plans and specifications for the project, as the final plans and specifications are subject to the final review and approval of any applicable governmental authority, the developer and its consultants and engineers. E. & O.E. January 2022 - Stafford Homes

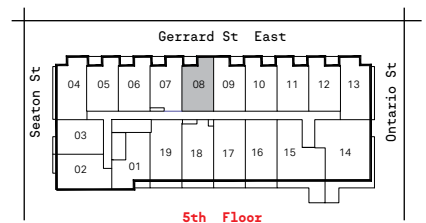
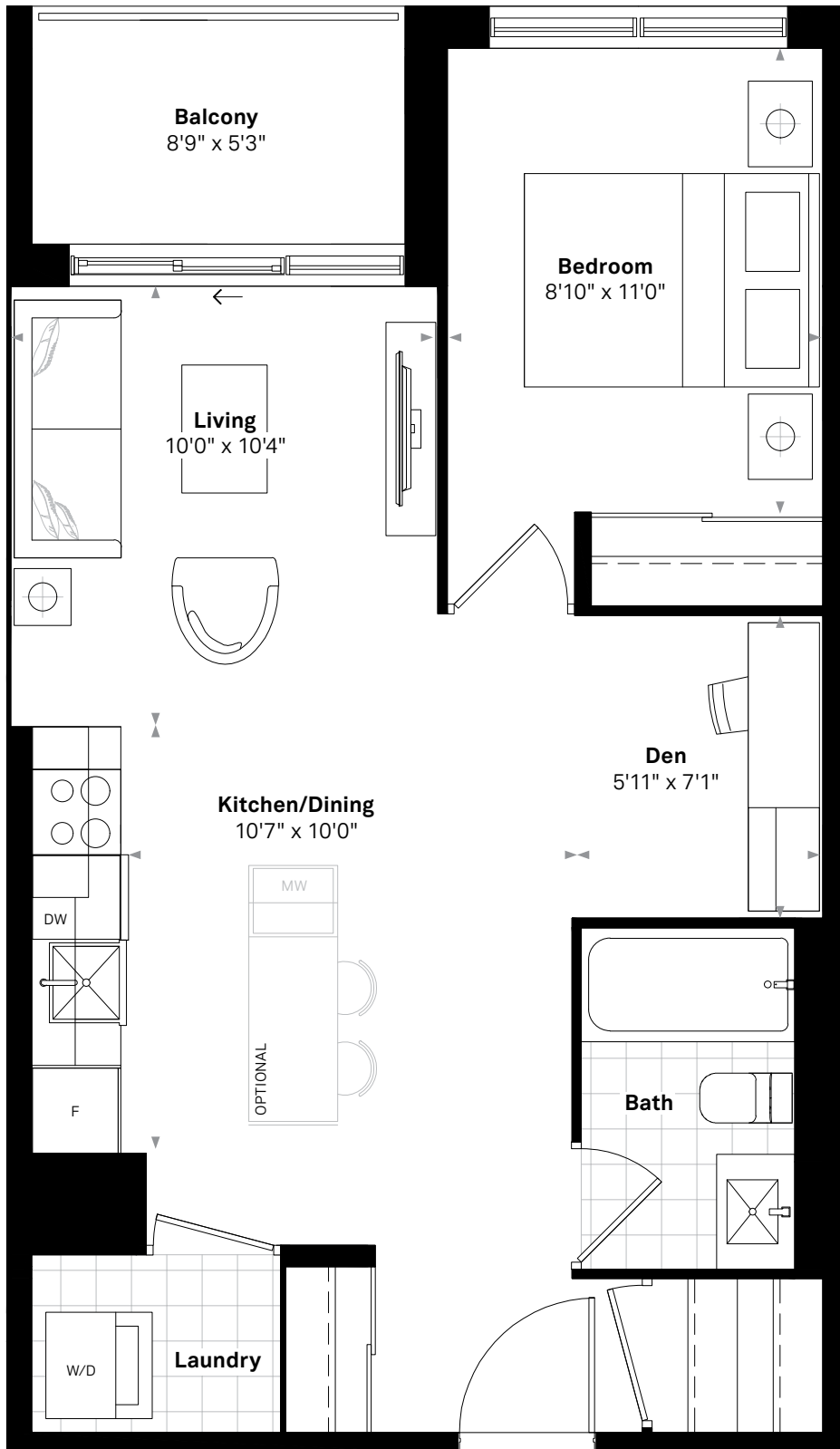
The Georgian

The Anderson

1 BEDROOM+DEN, 1 BATH

614 SQ.FT. (INTERIOR) + 49 SQ.FT. (BALCONY)

Suites 508, 608



Floor plan and specifications apply to architectural plan 1B+D - J. All illustrations are artist's concept. Specifications, layouts and materials are subject to change without notice. All measurements and dimensions are approximate only and not guaranteed to be exact or to scale. Dimensions may vary with actual construction and according to elevation. These floorplans and room dimensions apply to the featured unit of this model type. Window size and location may vary. Tile patterns may vary. Plan may be built as the mirror image. Bulkheads required for mechanical purposes have not been indicated. Outdoor area will vary depending on the suite location within the building. Any reference or depictions, if any, to furniture, appliances, or other related items and equipment are conceptual in nature and not included in the unit unless otherwise provided for in the agreement of purchase and sale. Nothing herein shall be relied upon as a representation or warranty, collateral agreement, or condition, express or implied, of the final plans and specifications for the project, as the final plans and specifications are subject to the final review and approval of any applicable governmental authority, the developer and its consultants and engineers. E. & O.E. January 2022 - Stafford Homes

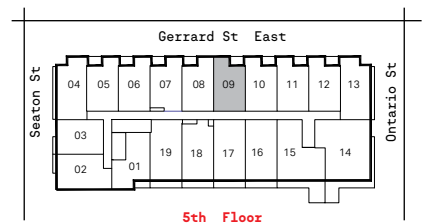
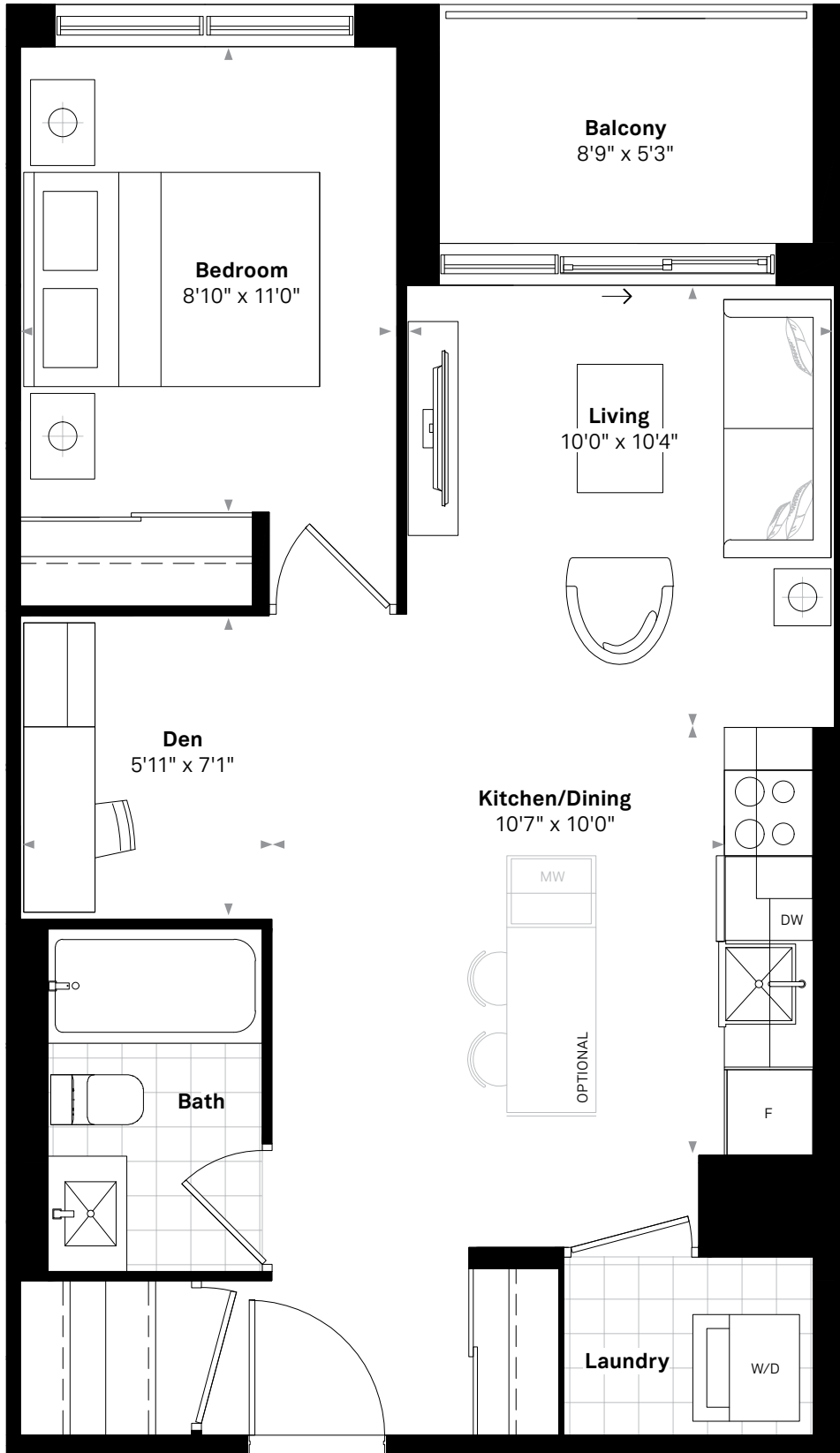
The Georgian

The Arnold

1 BEDROOM+DEN, 1 BATH

614 SQ.FT. (INTERIOR) + 49 SQ.FT. (BALCONY)

Suites 509, 609



Floor plan and specifications apply to architectural plan 1B+D - K. All illustrations are artist's concept. Specifications, layouts and materials are subject to change without notice. All measurements and dimensions are approximate only and not guaranteed to be exact or to scale. Dimensions may vary with actual construction and according to elevation. These floorplans and room dimensions apply to the featured unit of this model type. Window size and location may vary. Tile patterns may vary. Plan may be built as the mirror image. Bulkheads required for mechanical purposes have not been indicated. Outdoor area will vary depending on the suite location within the building. Any reference or depictions, if any, to furniture, appliances, or other related items and equipment are conceptual in nature and not included in the unit unless otherwise provided for in the agreement of purchase and sale. Nothing herein shall be relied upon as a representation or warranty, collateral agreement, or condition, express or implied, of the final plans and specifications for the project, as the final plans and specifications are subject to the final review and approval of any applicable governmental authority, the developer and its consultants and engineers. E. & O.E. January 2022 - Stafford Homes

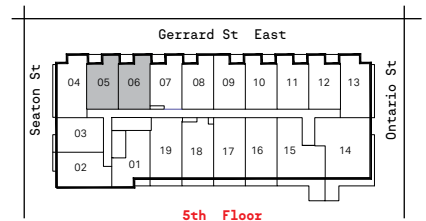
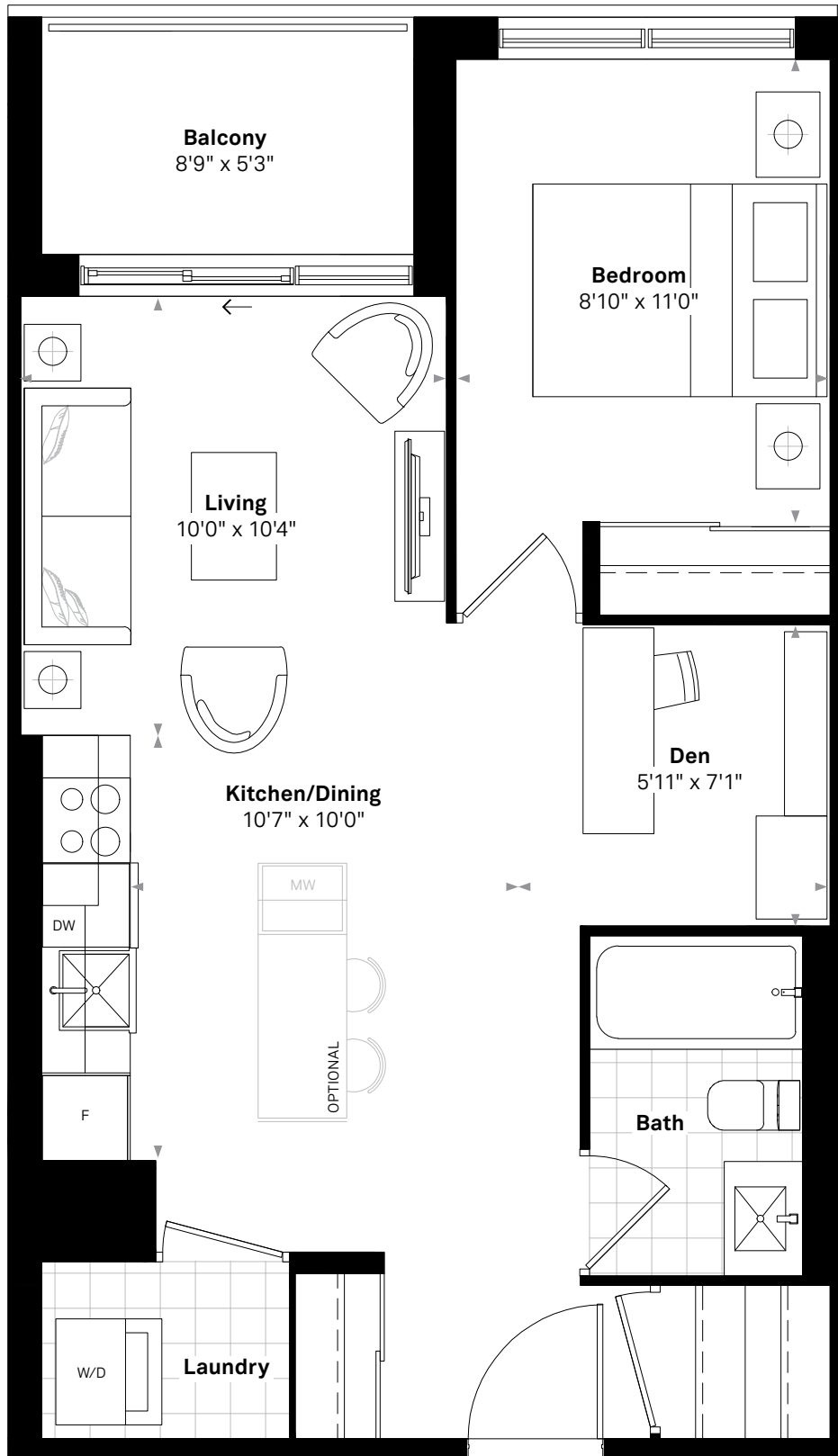
The Georgian

The Austen

1 BEDROOM+DEN, 1 BATH

619 SQ.FT. (INTERIOR) + 49 SQ.FT. (BALCONY)

Suites 505, 506, 605, 606



Floor plan and specifications apply to architectural plan 1B+D - B. All illustrations are artist's concept. Specifications, layouts and materials are subject to change without notice. All measurements and dimensions are approximate only and not guaranteed to be exact or to scale. Dimensions may vary with actual construction and according to elevation. These floorplans and room dimensions apply to the featured unit of this model type. Window size and location may vary. Tile patterns may vary. Plan may be built as the mirror image. Bulkheads required for mechanical purposes have not been indicated. Outdoor area will vary depending on the suite location within the building. Any reference or depictions, if any, to furniture, appliances, or other related items and equipment are conceptual in nature and not included in the unit unless otherwise provided for in the agreement of purchase and sale. Nothing herein shall be relied upon as a representation or warranty, collateral agreement, or condition, express or implied, of the final plans and specifications for the project, as the final plans and specifications are subject to the final review and approval of any applicable governmental authority, the developer and its consultants and engineers. E. & O.E. January 2022 - Stafford Homes

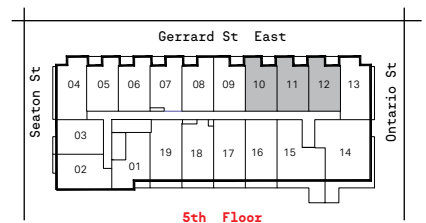
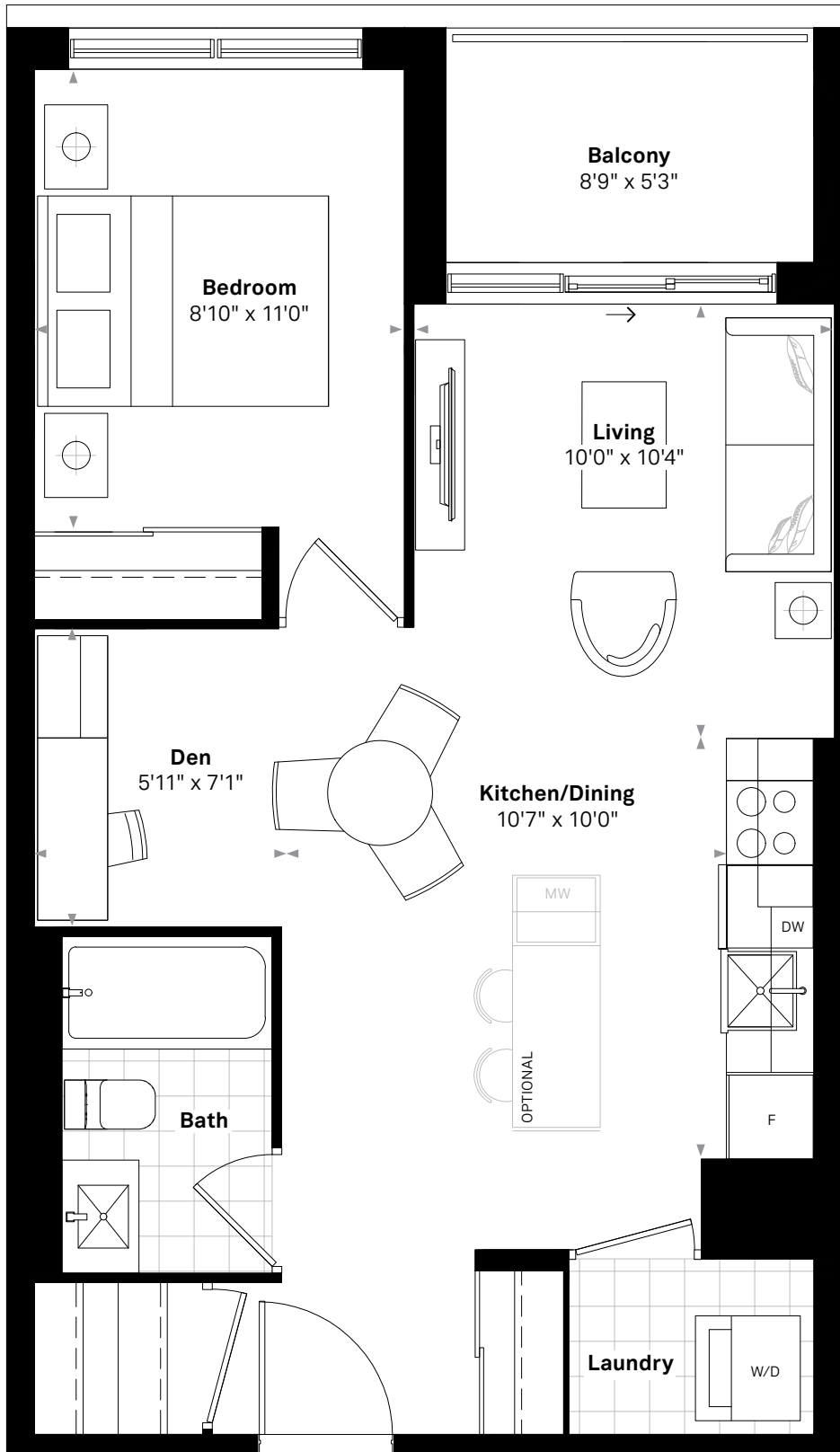
The Georgian

The Barnett

1 BEDROOM+DEN, 1 BATH

619 SQ.FT. (INTERIOR) + 49 SQ.FT. (BALCONY)

Suites 510, 511, 512, 610, 611, 612



Floor plan and specifications apply to architectural plan 1B+D - F. All illustrations are artist's concept. Specifications, layouts and materials are subject to change without notice. All measurements and dimensions are approximate only and not guaranteed to be exact or to scale. Dimensions may vary with actual construction and according to elevation. These floorplans and room dimensions apply to the featured unit of this model type. Window size and location may vary. Tile patterns may vary. Plan may be built as the mirror image. Bulkheads required for mechanical purposes have not been indicated. Outdoor area will vary depending on the suite location within the building. Any reference or depictions, if any, to furniture, appliances, or other related items and equipment are conceptual in nature and not included in the unit unless otherwise provided for in the agreement of purchase and sale. Nothing herein shall be relied upon as a representation or warranty, collateral agreement, or condition, express or implied, of the final plans and specifications for the project, as the final plans and specifications are subject to the final review and approval of any applicable governmental authority, the developer and its consultants and engineers. E. & O.E. January 2022 - Stafford Homes

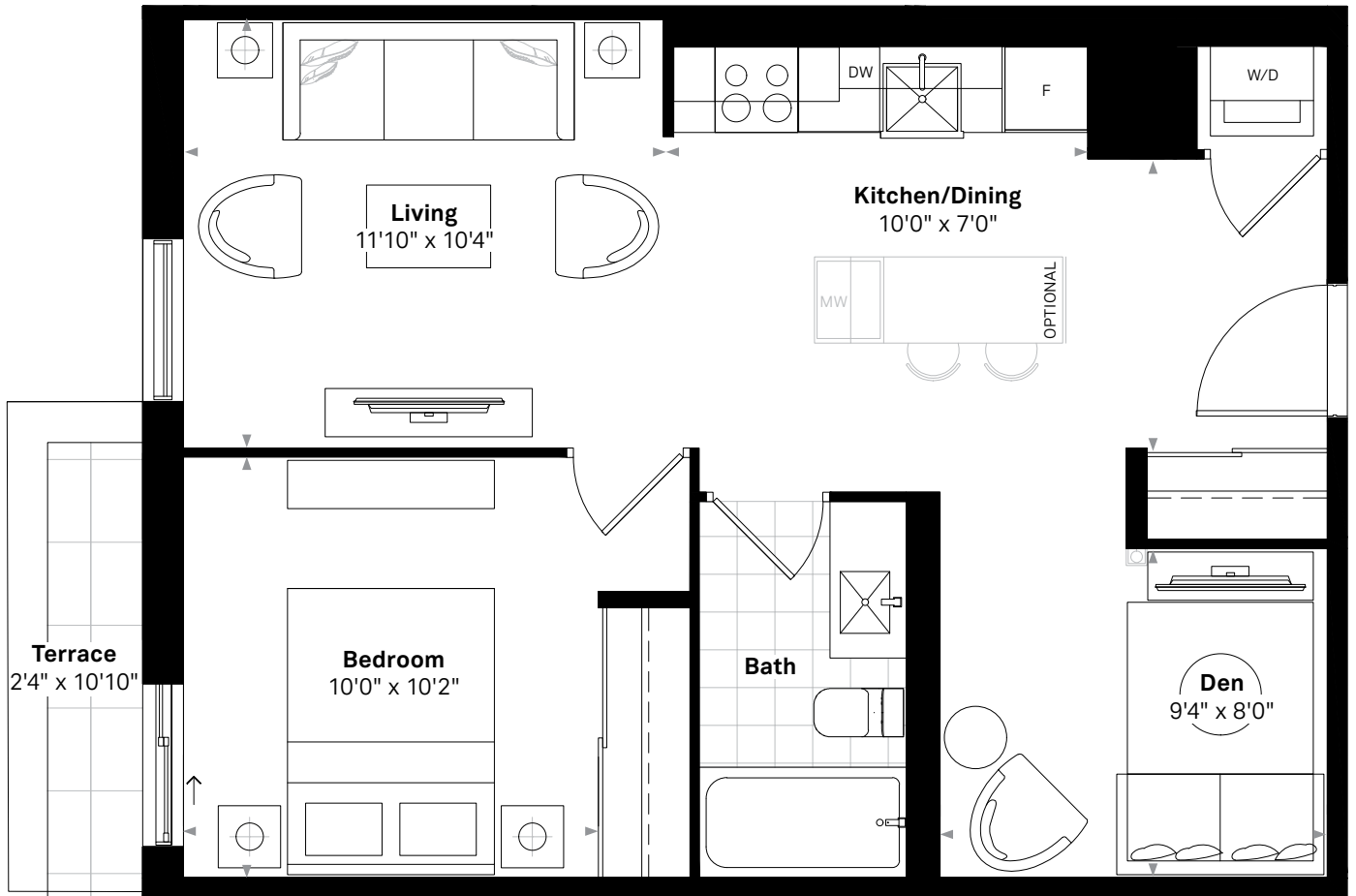
The Georgian

The Beethoven

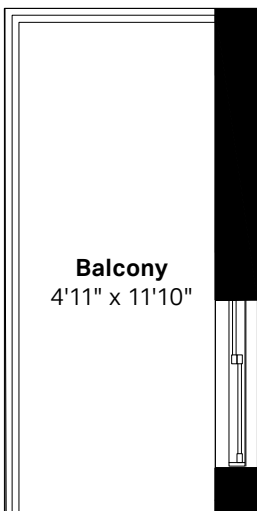
1 BEDROOM+DEN, 1 BATH

623 SQ.FT. (INTERIOR) + 25 SQ.FT. (TERRACE)

Suites 503, 603



Suite 503

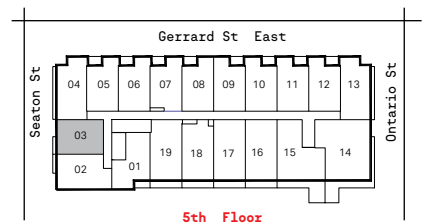


58 SQ.FT. (BALCONY)

Suite 603



6th Floor



5th Floor

Floor plan and specifications apply to architectural plan 1B+D - N. All illustrations are artist's concept. Specifications, layouts and materials are subject to change without notice. All measurements and dimensions are approximate only and not guaranteed to be exact or to scale. Dimensions may vary with actual construction and according to elevation. These floorplans and room dimensions apply to the featured unit of this model type. Window size and location may vary. Tile patterns may vary. Plan may be built as the mirror image. Bulkheads required for mechanical purposes have not been indicated. Outdoor area will vary depending on the suite location within the building. Any reference or depictions, if any, to furniture, appliances, or other related items and equipment are conceptual in nature and not included in the unit unless otherwise provided for in the agreement of purchase and sale. Nothing herein shall be relied upon as a representation or warranty, collateral agreement, or condition, express or implied, of the final plans and specifications for the project, as the final plans and specifications are subject to the final review and approval of any applicable governmental authority, the developer and its consultants and engineers. E. & O.E. January 2022 - Stafford Homes

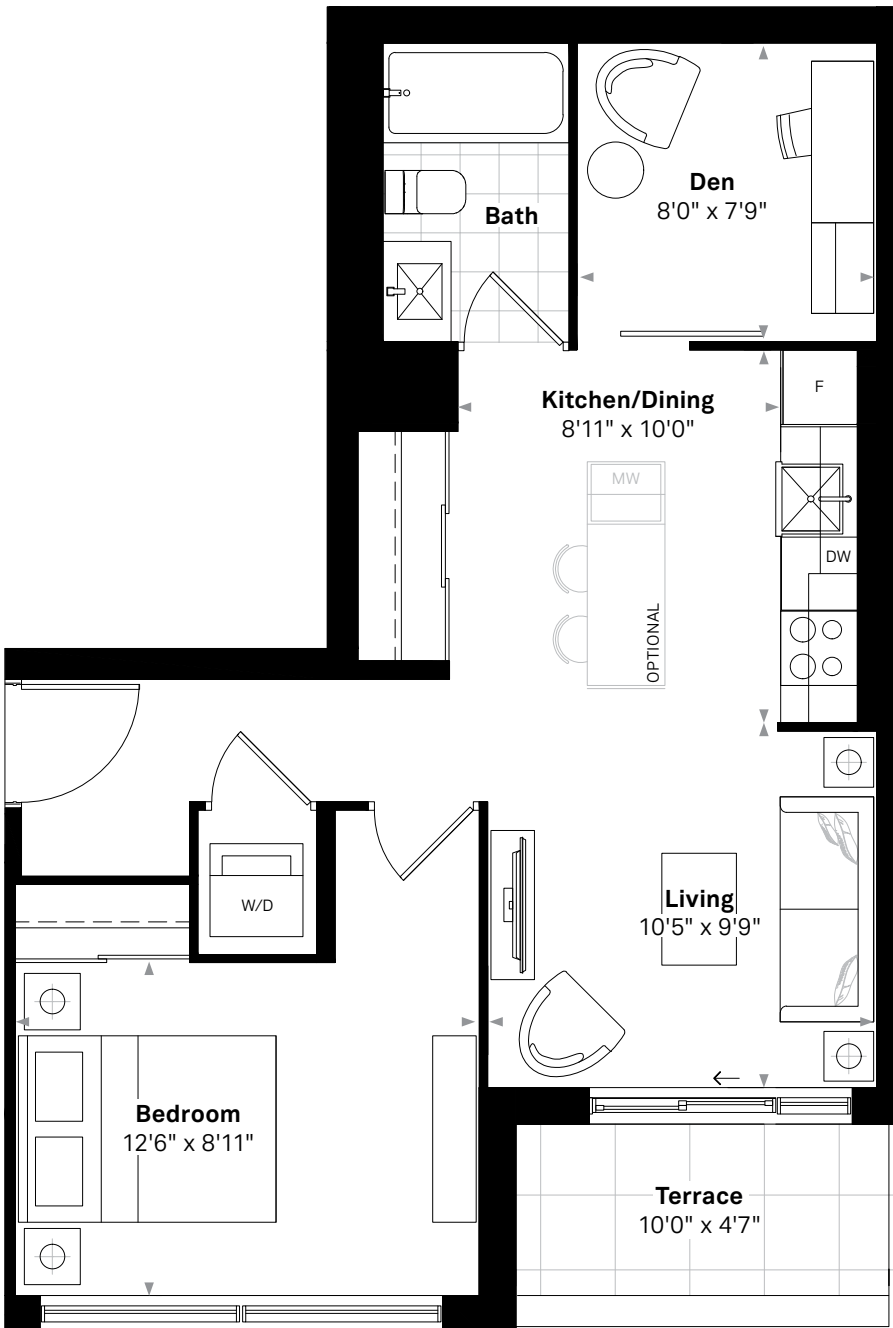
The Georgian

The Bell

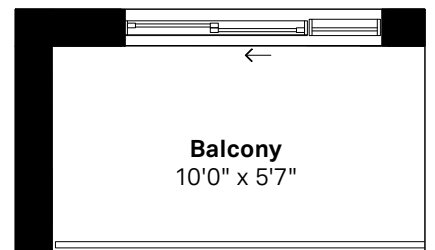
1 BEDROOM+DEN, 1 BATH

638 SQ.FT. (INTERIOR) + 46 SQ.FT. (TERRACE)

Suites 501, 601



Suite 501



56 SQ.FT. (BALCONY)
Suite 601



Floor plan and specifications apply to architectural plan 1B+D - I. All illustrations are artist's concept. Specifications, layouts and materials are subject to change without notice. All measurements and dimensions are approximate only and not guaranteed to be exact or to scale. Dimensions may vary with actual construction and according to elevation. These floorplans and room dimensions apply to the featured unit of this model type. Window size and location may vary. Tile patterns may vary. Plan may be built as the mirror image. Bulkheads required for mechanical purposes have not been indicated. Outdoor area will vary depending on the suite location within the building. Any reference or depictions, if any, to furniture, appliances, or other related items and equipment are conceptual in nature and not included in the unit unless otherwise provided for in the agreement of purchase and sale. Nothing herein shall be relied upon as a representation or warranty, collateral agreement, or condition, express or implied, of the final plans and specifications for the project, as the final plans and specifications are subject to the final review and approval of any applicable governmental authority, the developer and its consultants and engineers. E. & O.E. January 2022 - Stafford Homes

The Georgian

The Bennett (BF)

1 BEDROOM+DEN, 1 BATH

640 SQ.FT. (INTERIOR) + 34 SQ.FT. (BALCONY)

Suite 414



Floor plan and specifications apply to architectural plan 1B+D - G - (BF). All illustrations are artist's concept. Specifications, layouts and materials are subject to change without notice. All measurements and dimensions are approximate only and not guaranteed to be exact or to scale. Dimensions may vary with actual construction and according to elevation. These floorplans and room dimensions apply to the featured unit of this model type. Window size and location may vary. Tile patterns may vary. Plan may be built as the mirror image. Bulkheads required for mechanical purposes have not been indicated. Outdoor area will vary depending on the suite location within the building. Any reference or depictions, if any, to furniture, appliances, or other related items and equipment are conceptual in nature and not included in the unit unless otherwise provided for in the agreement of purchase and sale. Nothing herein shall be relied upon as a representation or warranty, collateral agreement, or condition, express or implied, of the final plans and specifications for the project, as the final plans and specifications are subject to the final review and approval of any applicable governmental authority, the developer and its consultants and engineers. E. & O.E. January 2022 - Stafford Homes

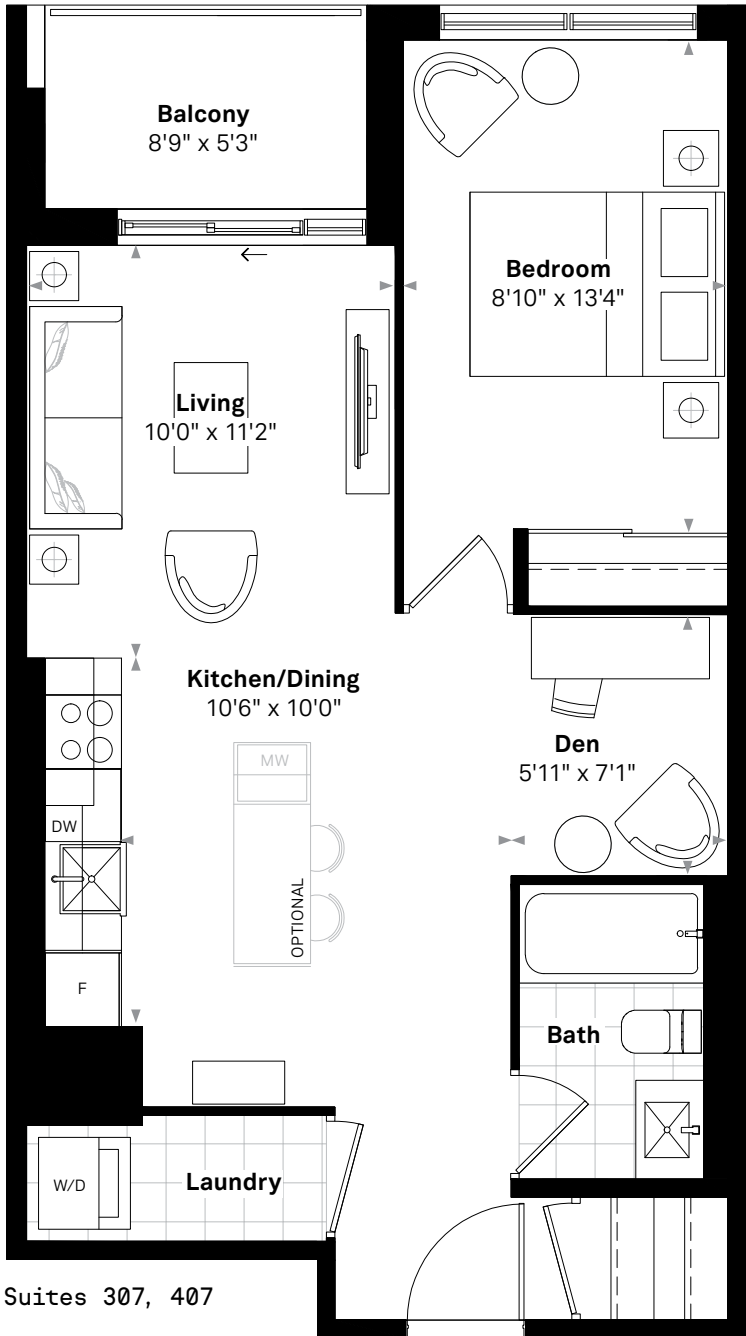
The Georgian

The Blackwell

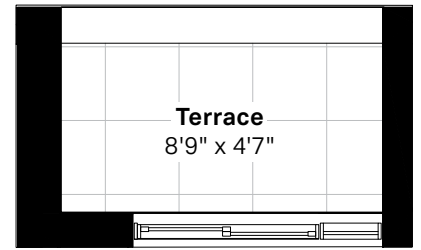
1 BEDROOM+DEN, 1 BATH

647 SQ.FT. (INTERIOR) + 49 SQ.FT. (BALCONY)

Suites 207, 307, 407



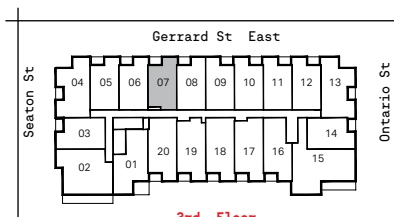
Suites 307, 407



40 SQ.FT. (TERRACE)
Suite 207



4th Floor



3rd Floor



2nd Floor



Floor plan and specifications apply to architectural plan 1B+D - C. All illustrations are artist's concept. Specifications, layouts and materials are subject to change without notice. All measurements and dimensions are approximate only and not guaranteed to be exact or to scale. Dimensions may vary with actual construction and according to elevation. These floorplans and room dimensions apply to the featured unit of this model type. Window size and location may vary. Tile patterns may vary. Plan may be built as the mirror image. Bulkheads required for mechanical purposes have not been indicated. Outdoor area will vary depending on the suite location within the building. Any reference or depictions, if any, to furniture, appliances, or other related items and equipment are conceptual in nature and not included in the unit unless otherwise provided for in the agreement of purchase and sale. Nothing herein shall be relied upon as a representation or warranty, collateral agreement, or condition, express or implied, of the final plans and specifications for the project, as the final plans and specifications are subject to the final review and approval of any applicable governmental authority, the developer and its consultants and engineers. E. & O.E. January 2022 - Stafford Homes

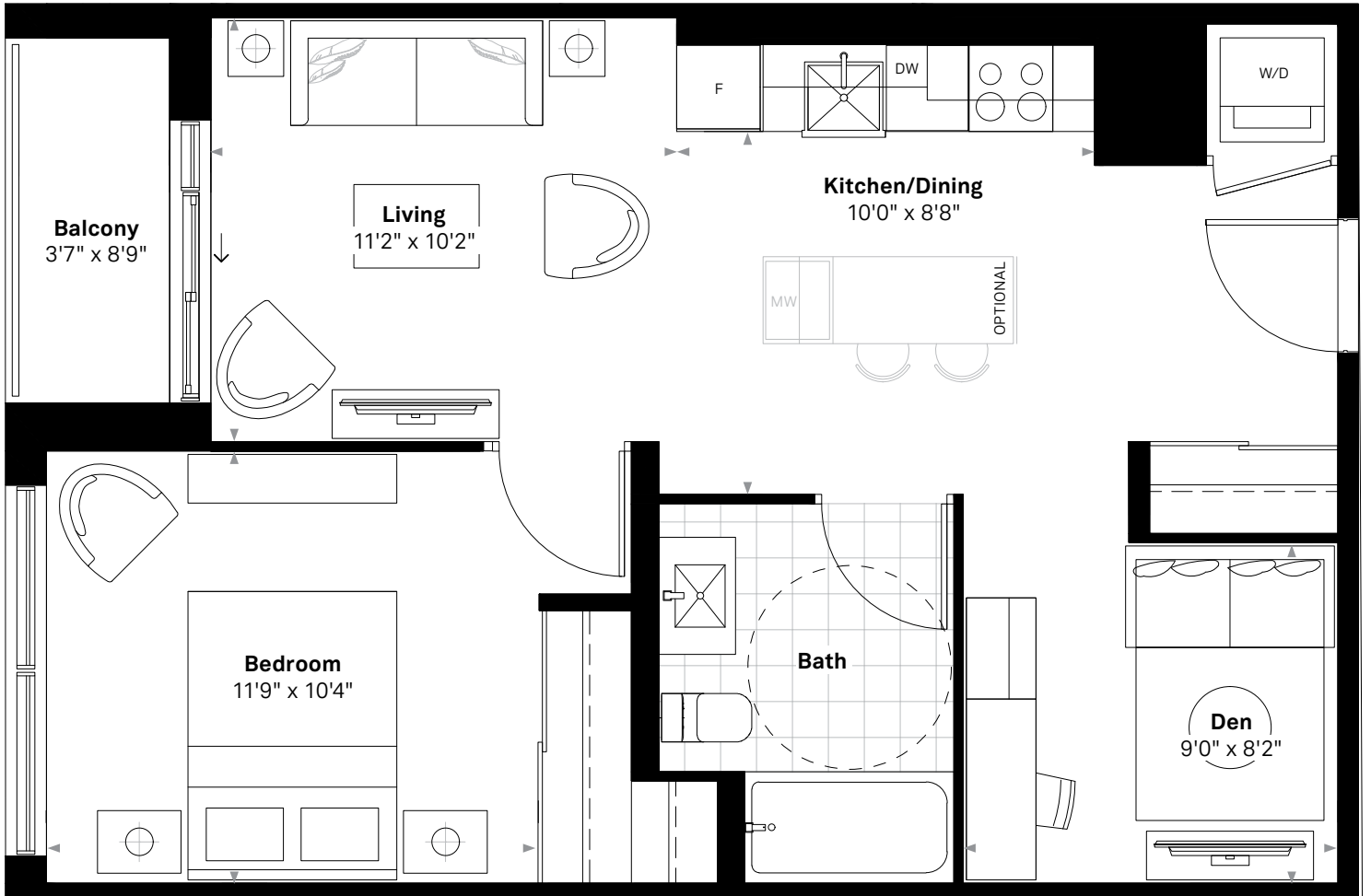
The Georgian

The Blake (BF)

1 BEDROOM+DEN, 1 BATH

656 SQ.FT. (INTERIOR) + 34 SQ.FT. (BALCONY)

Suite 403



Floor plan and specifications apply to architectural plan 1B+D - E - (BF). All illustrations are artist's concept. Specifications, layouts and materials are subject to change without notice. All measurements and dimensions are approximate only and not guaranteed to be exact or to scale. Dimensions may vary with actual construction and according to elevation. These floorplans and room dimensions apply to the featured unit of this model type. Window size and location may vary. Tile patterns may vary. Plan may be built as the mirror image. Bulkheads required for mechanical purposes have not been indicated. Outdoor area will vary depending on the suite location within the building. Any reference or depictions, if any, to furniture, appliances, or other related items and equipment are conceptual in nature and not included in the unit unless otherwise provided for in the agreement of purchase and sale. Nothing herein shall be relied upon as a representation or warranty, collateral agreement, or condition, express or implied, of the final plans and specifications for the project, as the final plans and specifications are subject to the final review and approval of any applicable governmental authority, the developer and its consultants and engineers. E. & O.E. January 2022 - Stafford Homes