

Lakeside Residences



LIVE. PLAY. LAKE.
LAKESIDE
RESIDENCES

World Class Residences
In a Brand New Waterfront Community



Brand new Google Community
& Home to new Google Canada HQ

SOLD OUT
Pier 27 Phase 1, 2 & 3
by Cityzen

SOLD OUT
Daniels Waterfront
by Daniels Homes

SOLD OUT
Monde Condes
by Great Gulf

WATERFRONT
INNOVATION CENTRE
430,000 sq.ft.
Office & Retail Space

Sugar Beach

CORUS

460,000 sq.ft. Office Space
1,200 Employees



Thousands of Students & Faculty

Sherbourne Common
Outdoor Skating Rink

SOLD OUT
Aqualina & Aquavista
by Tridel

Lakeside Residences Closer Look...

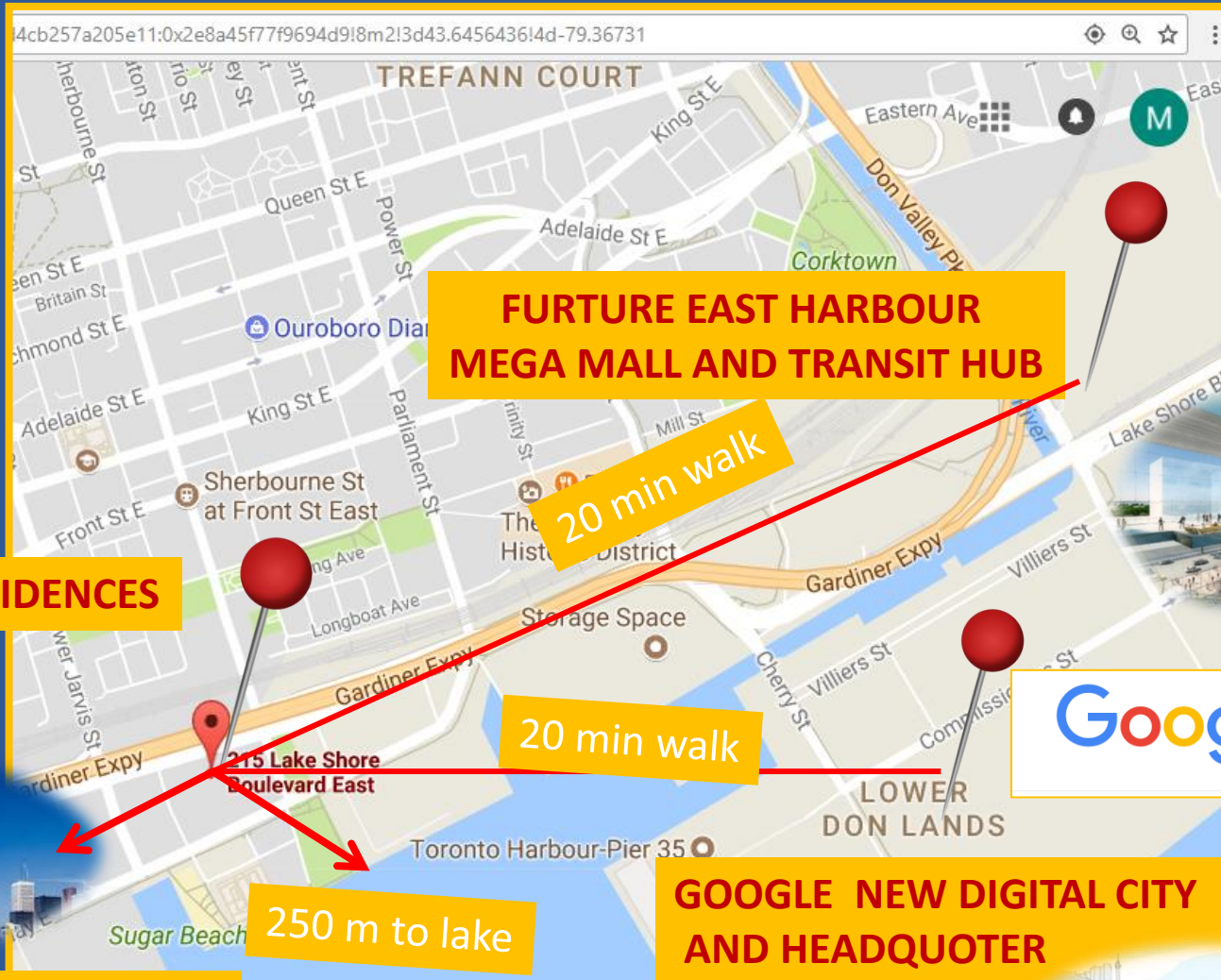


THREE REASONS TO BUY:

1. **LOCATION** – between Financial District on the West and new office building clusters (MEGA MALL at EAST HARBOR, NEXTDOOR TO GOOGLE FUTURE SMART CITY AND GOOGLE HEADQUOTER) on the South East.
2. **LUXURIOUS DEVELOPMENT:** will consist of 7 towers with ground floor retail, office and green spaces.
3. **THIS IS THE LAST TORONTO WATERFRONT DEVELOPMENT.**

LOCATION: FAST GROWING AND APPRECIATING AREA.

CLOSE TO FUTURE EAST HARBOUR MEGA MALL AND TRANSIT HUB, GOOGLE HEADQUOTER AND NEW GOOGLE SMART CITY, TORONTO FINANCIAL DISTRICT.



LAKESIDE RESIDENCES

FUTURE EAST HARBOUR MEGA MALL AND TRANSIT HUB

20 min walk

20 min walk

250 m to lake

GOOGLE NEW DIGITAL CITY AND HEADQUOTER

TORONTO FINANCIAL DISTRICT

15 min walk

LAKESIDE RESIDENCES:

Lakeside Residences is a new condo development by [Greenland Group](#) currently in pre-construction at [215 Lake Shore Boulevard East, Toronto](#).

It is situated on a parcel of land that equates to approximately 3.8 acres in the rapidly-transforming East Bay front neighborhood of [Toronto's Waterfront](#).



Phase one will feature 3 towers ascending 49, 39 and 14 storeys in the Lakeshore Blvd. E and Lower Sherbourne area, which is currently home to a FedEx shipping centre.

LAKE SIDE RESIDENCES

BAYSIDE TORONTO

- ❑ Bayside Toronto is a vibrant, mixed-use master-planned luxury waterfront community, part of the Waterfront Toronto Revitalization Act.



BAYSIDE TORONTO



- ❑ Situated on a 13 acre site along Toronto's water's edge, this is the largest such initiative currently almost completed along the shores of Lake Ontario.
- ❑ LAKESIDE RESIDENCES IS THE LAST BUILDING IN THIS PROJECT.

LAKESIDE RESIDENCES. BUILT AND DESIGNED BY THE BEST.

- Waterfront Toronto selected [Hines](#), the sector's largest privately held real estate company, as the master developer of the Bayside site.
- [Tridel](#) is the residential development companion, one of Canada's leading condominium developers, who has built over 80,000 homes in the GTA in the last 70 years.
- Landscape designs will be led by West 8 + DTAH, who are an award-winning group responsible for the water's edge promenade and the layout for the revitalization of Queens Quay.



Hariri Pontarini's
building concept is
heavily influenced by
Toronto's Harbour
sailboats.

The curves of the
sailboat hulls are
captured in the curves
of the design.



DEPOSIT STRUCTURE

\$5,000 on signing

balance to 5% in 30 days

5% in ~~90~~ 180 days

5% in ~~270~~ 365 days

5% in ~~720~~ days

5% on occupancy

Occupancy for Lakeside Residences is slated for Fall 2021

Maintenance fees are estimated at \$.59/sq ft excluding water and hydro

PLACE TO LIVE, WORK AND PLAY

OCAD and George Brown, retail and restaurant galleria, new office space developments bring jobs to the area. The Financial District, where it's estimated almost 200,000 people work is only minutes away by streetcar, as is the historic St. Lawrence Market and the velvety shores of Cherry Beach, a popular entertainment and relaxation spot in the summer.





ENJOY BAYSIDE TORONTO LIVING

Bayside Toronto. New Great Neighbourhood



GOOGLE SMART CITY – STEPS FROM LAKESIDE RESIDENCES

Google's sister company Sidewalk Labs announced last week plans for Toronto's Quayside neighborhood in partnership with Waterfront Toronto. The 12-acre site immediately next door on Lake Shore will include 3.3 million sq ft of residential, office and commercial space and a new headquarters for Google Canada. [Visit the Globe and Mail Article.](#)

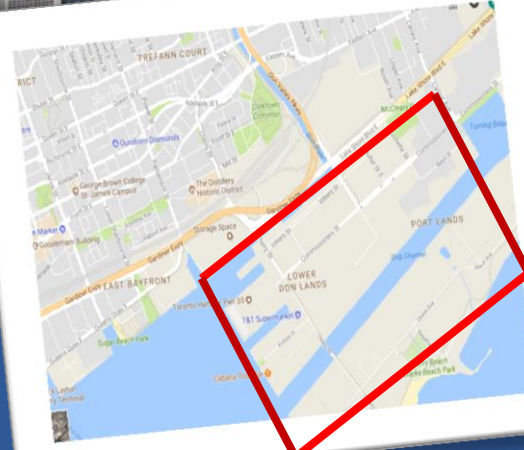


Google
Canada

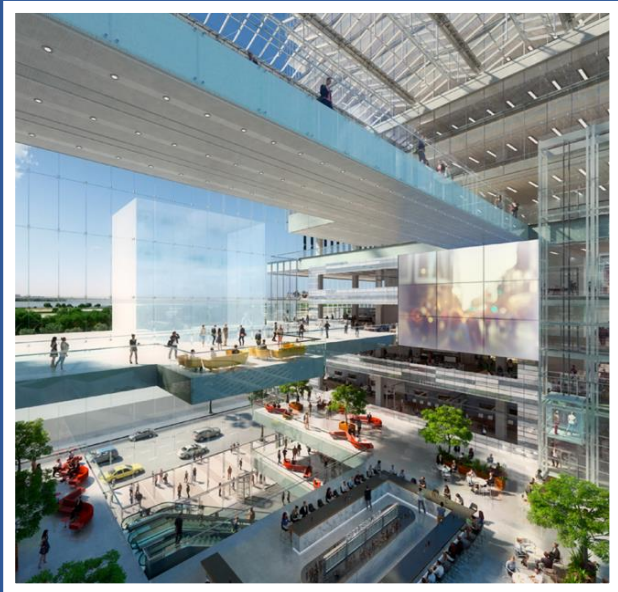
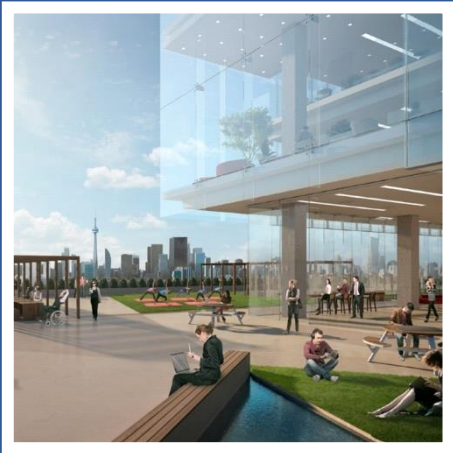
GOOGLE DIGITAL CITY

UBIQUITOUS CONNECTIVITY
ARTIFICIAL INTELLIGENCE
SELF- DRIVING CARS...

Google announces it will build
Toronto's neighbourhood of the
future



East Harbour Mega Mall and Transit Hub, home to 50,000 jobs will be located east of Lakeshore Residences



An aerial night photograph of a city skyline, likely Toronto, featuring the CN Tower and numerous illuminated skyscrapers. The city is situated along a large body of water, with the sun setting in the background, creating a warm orange and yellow glow. The text "waterfront. cityside." is centered in the image.

waterfront. cityside.

Illustration is artist's concept. © S.O.C.

Here night