



WELLESLEY

RESIDENCES AT YONGE

10 YEARS
BUILDING
TORONTO'S
SKYLINE



CENTRECOURT





E I G H T
IS
E X T R A O R D I N A R Y



Illustration is artist's concept only. Actual may vary E.&O.E.

Eight is Home to The Next Generation of Toronto's Elite.

Welcome to 8 Wellesley, a lifestyle directly on Yonge Street and close to everything that matters. Yorkville, U of T, Ryerson, the Eaton Centre, Financial District, Discovery District, Yonge-Dundas Square. A home just steps to the subway, taking you everywhere you want to go.

Soaring 55 storeys into the air, this is architecture that stands out against the crowd. A reflective glass tower clad in glossy black metal on the south side, accentuated on the north side by extruding, vertical silver fins and punctuated with an illuminated glass portal at the top. A glowing beacon against the night sky.

HERMES
PARIS

E I G H T

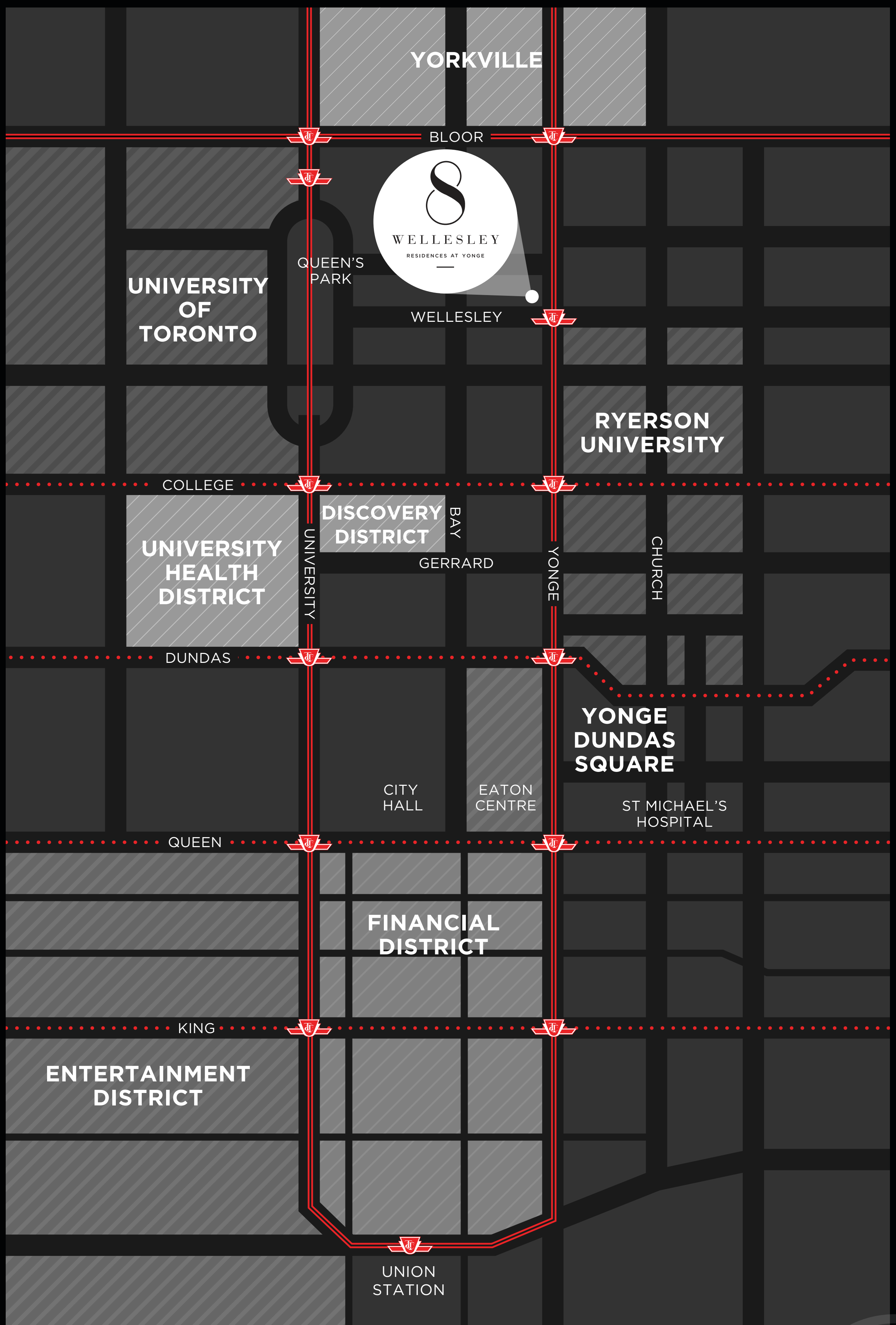
I S

E X C I T I N G

N E I G H B O U R H O O D

HOLT RENFREW

A World of Possibility, Just Outside Your Door.



At 8 Wellesley, enjoy the luxury of a truly connected location - the ultimate amenity and the envy of everyone.

NEIGHBOURHOOD



99

Lifestyle Score



99

Walk Score



100

Transit Score

With an Exceptional Location at Yonge, 8 Wellesley is an Instant Emblem of Power and Style.

At the corner of Yonge and Wellesley, close to world-class shopping, world-class universities, world-renowned business centres, and on a street recognized the world over, 8 Wellesley is the perfect choice for students and professionals who share a desire to live in the city's most sought-after spot.



You're Not Just Close, You're 8 Wellesley Close. 100 Metres to the Subway.



This is as close to the subway as you can get. With Wellesley Station outside your front door, you have instant access to the entire city. Connect to opportunity, higher education, entertainment and more - everything you need to live your best life starts here.



Yorkville, Meet 8 Wellesley.



Everyone wants to be a part of Yorkville, Toronto's mecca for high-end shopping, upscale restaurants, luxury hospitality, and designer brands, but few will put you as close as 8 Wellesley. Indulge in a lifestyle of glitz and glamour where the city's elite live, shop, and dine. Pop in to Chanel, Prada, Gucci, and Burberry. Stop for drinks at the Four Seasons or the Park Hyatt's famous rooftop bar. Great style and great taste are served up daily and nightly to an influential crowd.





A City Landmark, Where Excitement and Energy Converge.

Located on the north-west corner of Yonge & Wellesley, in the heart of the downtown core, and just a few minutes from Toronto's most iconic intersection, Yonge and Dundas Square, 8 Wellesley embodies energy and excitement. More than 100,000 people cross this public landmark each day, basking in the glow of dazzling retail, theatres, restaurants, and groundbreaking graphics.





Less than 10 minutes from the #1 Ranked University in Canada.



Due West, sits the world-renowned University of Toronto St. George Campus, an exceptional site, inspiring some of the world's brightest minds. Named Canada's most innovative university by Maclean's, and ranked #1 in Canada and #17 in the world by U.S. News & World Report, U of T is an international powerhouse.

Home to 60,000+ students but only 6,616 beds, 8 Wellesley provides an ideal opportunity for students, faculty, and alumni to find a home.



Ryerson University: 47,000 Students, Only 1,700 beds.



8 Wellesley puts innovation and career-focused education within close reach. From the award-winning Student Learning Centre to the upcoming multi-functional Daphne Cockwell Health Sciences Complex, Ryerson University offers the perfect balance of student-focused education and real-world experience.



Canada's Economic Engine: The Financial District

With the Financial District within walking distance, 8 Wellesley is undoubtedly home to the elite. Toronto's economic powerhouse generates almost 10 percent of Canada's GDP, and is the place where the country's business leaders in finance and technology chart a course for the future of business.





Discover a World of Healthcare and Innovation.



Innovation meets the pursuit of health and the power of science in Toronto's Discovery District, one of the largest medical and biotech clusters in North America, and next door to 8 Wellesley. A world leader in healthcare and life sciences, the area is home to 9 teaching hospitals, 30+ specialized medical research centres, and more than 22,000 medical care and research-related jobs. It receives more than \$1 billion in funding annually to find cures for some of the world's most challenging ailments including breast cancer, cardiovascular disease, Alzheimer's, and cystic fibrosis.



EIGHT
IS
EXCEPTIONAL
—
ARCHITECTURE

Toronto's New Icon.

The architecture of 8 Wellesley reveals a relentless commitment to precision. Sophisticated materials combine to create a striking presence on Yonge Street. Reflective glass and soaring silver fins punctuate glossy black metal. A unique angled cutaway creates a one-of-a-kind silhouette in the sky. 8 Wellesley sits on the cutting edge of architecture.



Illustration is artist's concept only. Actual may vary E.&O.E.

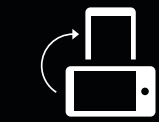


Illustration is artist's concept only. Actual may vary E.&O.E.



SOUTHWEST VIEW





SOUTHEAST VIEW



E I G H T

I S

E X C L U S I V E

A M E N I T I E S

Quality is everything. That's the philosophy that has shaped the amenity programming at 8 Wellesley.

Enjoy an expertly tailored program, designed exclusively for residents. Over 21,000 square feet of sophisticated spaces that stretch inside, outside, and back again.



Illustration is artist's concept only. Actual may vary E.&O.E.

Welcome Home.

Step into the lobby at 8 Wellesley and enter a world of extraordinary style and taste. Whether it's the curving lines of the Fendi furniture, immediately recognizable for their sensuous Italian style; the lavish dose of Parisian glamour found in a mix of velvet, marble, iron, and antique mirror; or the pièce de résistance, a grand piano dwarfed by a dramatically oversized crystal chandelier, this is a space that makes a stunning first impression.



LOBBY

Illustration is artist's concept only. Actual may vary E.&O.E.





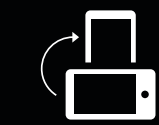
FITNESS CENTRE

Illustration is artist's concept only. Actual may vary E.&O.E.

Workout in Style 24/7.

Achieve peak wellness and fitness performance in the unparalleled fitness facility. The 6,300 square foot fitness centre at 8 Wellesley rivals the most luxurious gyms in the city, and you can access it without ever leaving home.

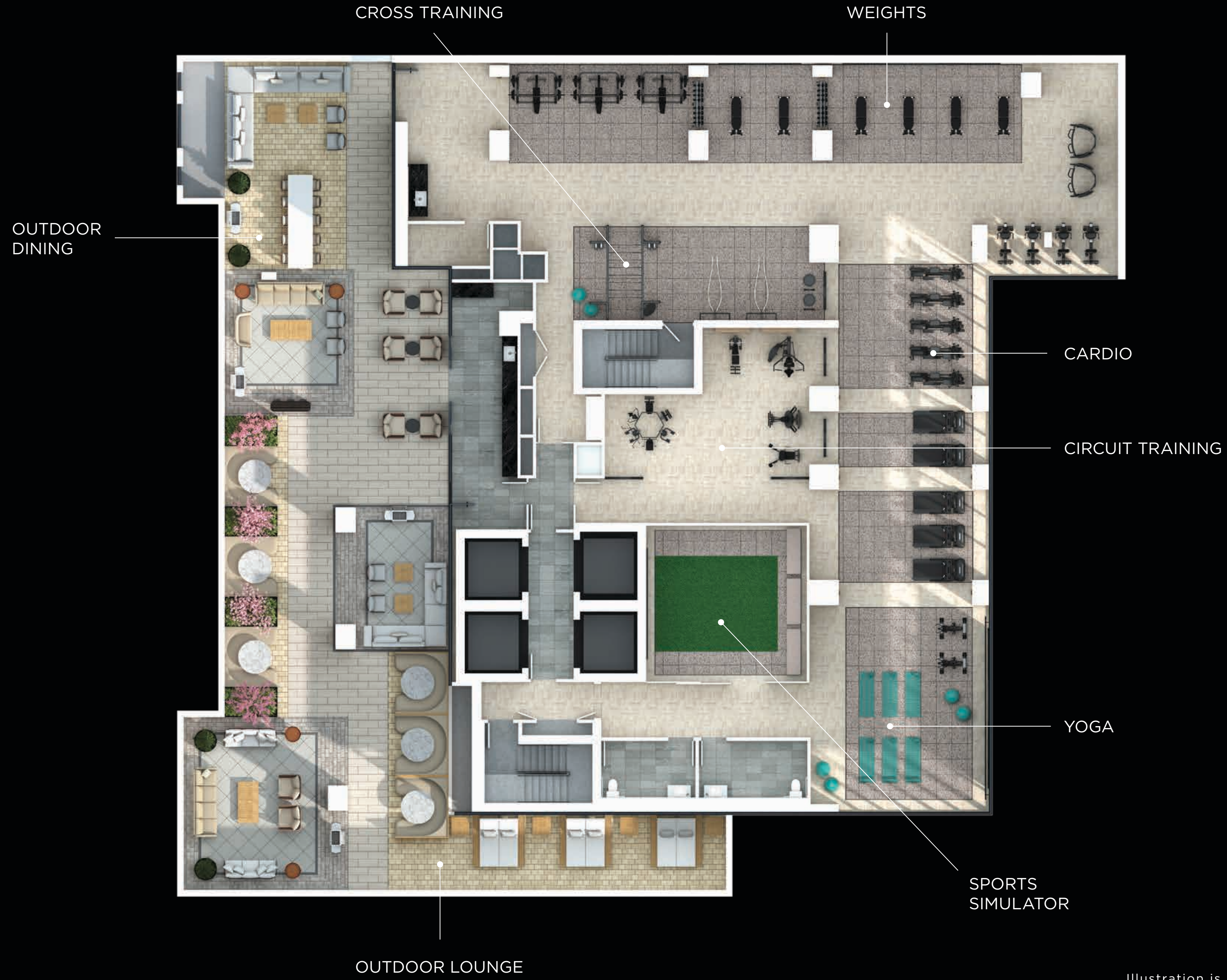
This space combines high-performance facilities with luxurious interior design. Bronze glass, gold accents, and state-of-the-art equipment. Test your limits in the gym or in the sports simulator, available 24/7 and just a short elevator ride away.



FITNESS CENTRE

Illustration is artist's concept only. Actual may vary E.&O.E.

LEVEL 3
FITNESS CENTRE



YONGE ST.
WELLESLEY

Illustration is artist's concept only. Actual may vary E.&O.E.



Illustration is artist's concept only. Actual may vary E.&O.E.

Redefine Work From Home.

Work smarter not harder in a shared workspace thoughtfully designed to adapt to your unique professional style.

Get your best ideas at night? The coworking space is open 24/7. Feel most creative in the great outdoors? The indoor/outdoor lounge lets you commune with nature. Whether you need total silence, or you like to collaborate, there are private study rooms and communal tables, study banquettes, and a fireside lounge, everything you need to get the job done.



CO-WORKING SPACE

Illustration is artist's concept only. Actual may vary E.&O.E.

OUTDOOR OASIS



PRIVATE STUDY ROOMS

COLLAB SPACE

LOUNGE

STUDY BANQUETTES

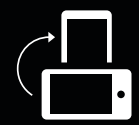
OUTDOOR LOUNGE/GAMES



LEVEL 5
CO-WORKING SPACE

WELLESLEY
YONGE ST.

Illustration is artist's concept only. Actual may vary E.&O.E.



E I G H T

I S

E X Q U I S I T E

I N T E R I O R S

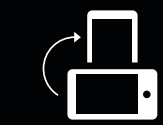


SUITE INTERIOR

Illustration is artist's concept only. Actual may vary E.&O.E.

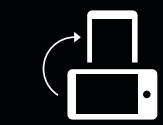
Beautiful Details Everywhere You Look.

The same quiet elegance that graces the lobby and the amenities of 8 Wellesley continues throughout the suites. Whether a studio, 1-, 2- or 3-bedroom, you'll find sophisticated spaces with hints of luxury rendered in thoughtful details. Refined finishes. Integrated linear kitchens. Gold-toned display shelving, organic materials, and open concept design that creates an expansive sense of space.



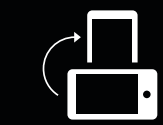
EMPOWERED PALETTE

Illustration is artist's concept only. Actual may vary E.&O.E.



ENIGMATIC PALETTE

Illustration is artist's concept only. Actual may vary E.&O.E.



ENLIGHTENED PALETTE

Illustration is artist's concept only. Actual may vary E.&O.E.

BUILDING

- 24-hour, 7 day a week concierge
 - Security coded access fob for all residents
 - Three guest suites provided for residents' use
 - Individual suite hydro, BTU and water metering
 - Automated parcel storage
-

SUITES

- Smooth finished ceilings throughout
 - Choice of flooring throughout entry, kitchen, dining, living areas and bedrooms from builder's standard samples
 - Painted baseboards, door frames and casings
 - TV/telephone outlets in living/dining room and bedrooms
 - Smoke detectors and sprinkler system
-

KITCHENS

- Kitchen cabinetry from builder's standard samples
 - Countertop from builder's standard samples
 - Undermount stainless steel sink
 - Appliances Collection
 - Refrigerator
 - Cooktop and oven
 - Microwave
 - Exhaust fan insert
 - Dishwasher
 - Stacked washer and dryer
-

BATHROOMS

- Countertop from builder's standard samples
 - Tile from builder's standard samples
 - Sink and faucet
 - Bathroom cabinetry from builder's standard samples
 - Bathtub with shower curtain rod, faucet, controls and shower head, as per plan
 - Shower with enclosure, as per plan
-

10 YEARS
BUILDING
TORONTO'S
SKYLINE



CENTRECOURT



CentreCourt is known for its well thought out developments. Always close to major amenities, rapid transit network and employment areas, its numerous high-rise condominiums are designed for city life.

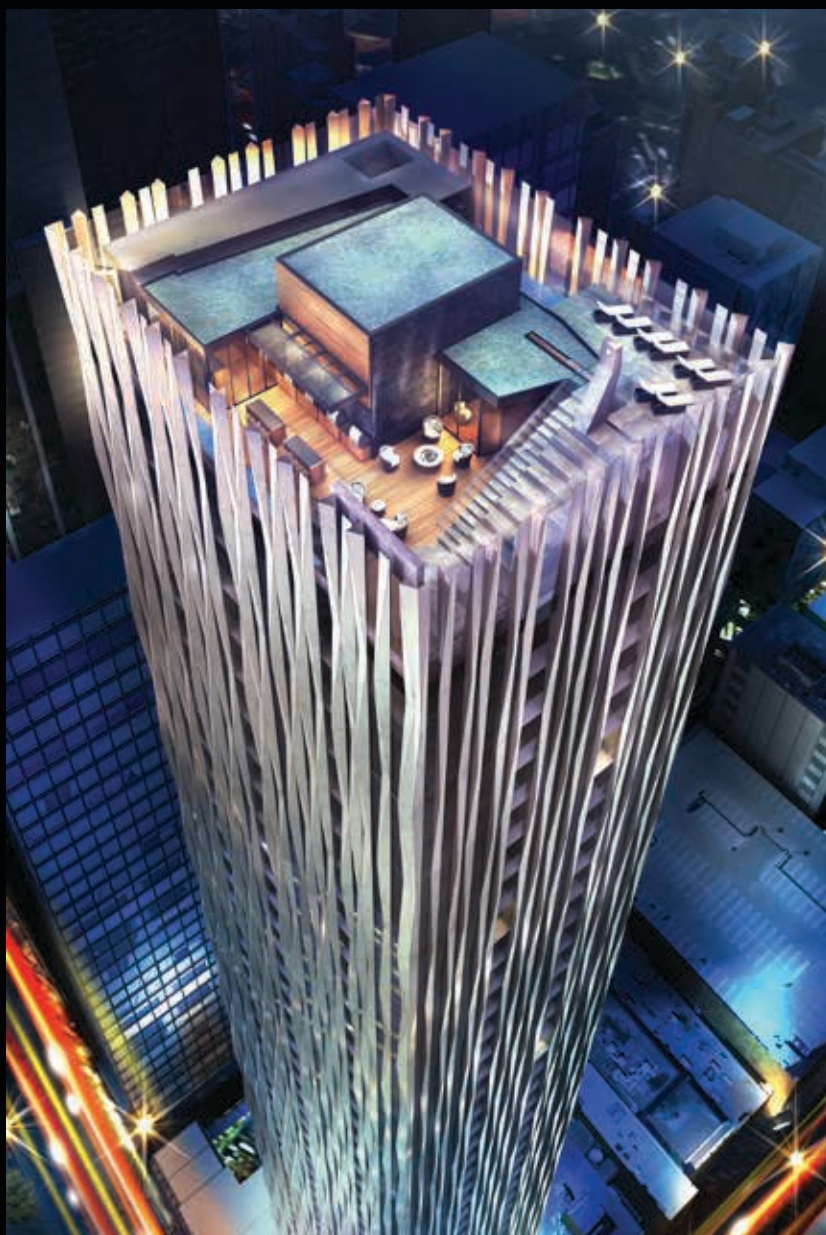
The company believes that this approach to development will contribute to the Greater Toronto Area's vibrancy, sustainability, and competitiveness. CentreCourt has completed or is actively developing 18 high-rise residential communities throughout the GTA, collectively representing over 9,000 homes and \$4 billion of development value. Every CentreCourt development is a collaborative endeavour undertaken with the finest planners, architects, interior designers, and construction trades in the business.

Driven by its vision to become industry leader, CentreCourt values excellence and aims to create a positive impact in the way people live. Every suite the company has developed is of the highest quality standard. Taking pride in building unique developments, CentreCourt always strives to exceed expectations.

The BAZIS logo is displayed in a bold, black, sans-serif font within a white rectangular box.

Over the course of the last decade, Toronto has experienced a transformation in its landscape and skyline. BAZIS has played a large role in that redesign, setting the company apart from other real estate developers.

The focus at BAZIS has been on designing luxurious living spaces with the utmost attention to detail; living spaces where expression through design meets human interaction. BAZIS is committed to maintaining the highest standards of excellence in every facet of the residential and commercial real estate development process. Being able to successfully combine visionary architecture and design with marketing and construction, has turned BAZIS into a reckoning force in pronouncing the city's landscape. The commitment to crafting every project with exquisite attention to detail goes hand-in-hand with corporate integrity and responsibility.



1 YORKVILLE



EMERALD PARK



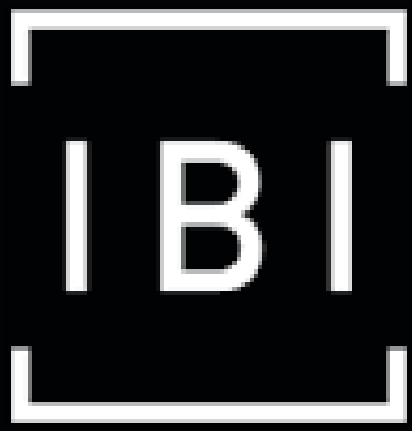
CRYSTAL BLU

Based on this commitment, BAZIS can rewrite Toronto's urban story; creating contemporary luxury condominiums and homes located in prime neighbourhoods throughout the city. Unique architecture and high standards of luxurious finishes are reflected in past and present projects which include: Bartley Towns, Crystal Blu, Emerald Park, Exhibit, eCondos and 1 Yorkville. Each of these developments is crafted with exquisite design, superior location and elaborate amenities.

BAZIS understands the mindset of today's urban buyers. Creating luxury condo developments in some of Toronto's most sought after locations, that are always unique in design and outstanding quality has put BAZIS in a class of its own.

ARCHITECTURE | IBI GROUP

IBI Group is a global architecture, engineering, planning, and technology firm defining the cities of tomorrow. Headquartered in Toronto, the firm includes a team of industry leading architects, engineers, planners, designers, and technology professionals united by a common desire: to create livable, sustainable, technologically advanced urban environments.



From high-rises to industrial buildings, schools to state-of-the-art hospitals, transit stations to highways, airports to toll systems, bike lanes to parks, IBI Group designs every aspect of truly integrated cities. Their collaborative approach focuses on future-forward solutions, bridging the gap between design and technology, unlocking new potential in data-driven environments.

INTERIORS | FIGURE3

With 25 years of business success, figure3 is one of Canada's largest award-winning, independently owned interior design firms transforming how people work, live, and shop.

FIGUR3

Invoking brand strategy and its unique design research process, figure3 takes an in-depth look at the intersection of human behavior and client goals to rethink the physical environment, truly connecting people to place. Based in Toronto, figure3 is a studio of 60+ designers, and works with the world's most exciting and progressive companies. Notable projects include Sony Interactive Entertainment, Cineplex and Virgin Mobile, and prominent residential developments such as Transit City and The Well.

LANDSCAPE ARCHITECT | LAND ART DESIGN

LANDARTDESIGN
landscape architects inc.

Land Art Design is founded on the belief that bringing nature into urban environments can transform and improve lives. The firm's passion is crafting landscapes that inspire and delight, incorporating nature-rich elements even in the most unconventional places. The LAD team draws on both established research and personal insights to design to our inherent social natures, developing outdoor spaces for both community connection and individual retreat. Every project is an opportunity to set the stage for nature's regenerative qualities and to mend our personal, environmental, and social systems. NATURE-FORWARD design has the power to make us all part of something bigger.

**10 YEARS
BUILDING
TORONTO'S
SKYLINE**



CENTRE COURT

