



WELLESLEY

RESIDENCES AT YONGE

EIGHT IS HOME TO THE NEXT GENERATION OF TORONTO'S ELITE.

Welcome to 8 Wellesley, a lifestyle directly on Yonge Street and close to everything that matters. Yorkville, U of T, Ryerson, the Eaton Centre, Financial District, Discovery District, Yonge-Dundas Square. A home just steps to the subway, taking you everywhere you want to go. At the corner of Yonge and Wellesley, close to worldclass shopping, world-class universities, world-renowned business centres, and on a street recognized the world over, 8 Wellesley is the perfect choice for students and professionals who share a desire to live in the city's most sought-after spot.

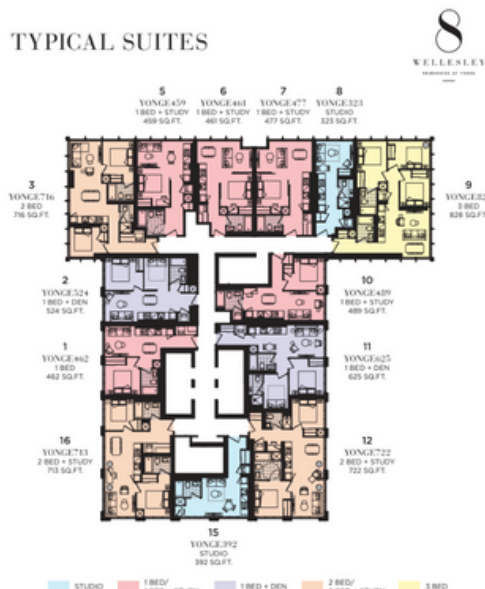
Building Features

- ⇒ 24-hour, 7 day a week concierge
- ⇒ Security coded access fob for all residents
- ⇒ Three guest suites provided for residents' use
- ⇒ Steps from World-Class shopping, universities, business centres
- ⇒ Unparalleled 6,300 Sq.Ft Fitness Facility
- ⇒ State-of-the-art Co-Working space with indoor/outdoor lounge

Suite Highlights

- ⇒ Smooth finished ceilings throughout
- ⇒ Choice of flooring throughout entry, kitchen, dining, living areas and bedrooms from builder's standard samples
- ⇒ Painted baseboards, door frames and casings
- ⇒ 599 Units ranging from 315Sq.Ft to 1,300Sq.Ft
- ⇒ Integrated linear Kitchens
- ⇒ Gold-toned display shelving, organic materials & ioen concept designs

TYPE	Starting Price Ranges
Studio (north facing)	Low/Mid \$500K
Studio (south facing)	Mid/High \$500K
1 Bedroom	High \$600K
1 Bedroom + Den	Low \$800K
2 Bedroom	Mid \$800-\$900K
3 Bedroom	High \$900K



T: 416-524-8433

FLOOR PREMIUMS BASED ON ELEVATIONS & LOCATION. AVAILABILITY, FEATURES, PROMOTIONS, PRICES & DEPOSITS ARE SUBJECT TO CHANGE WITHOUT NOTICE.