

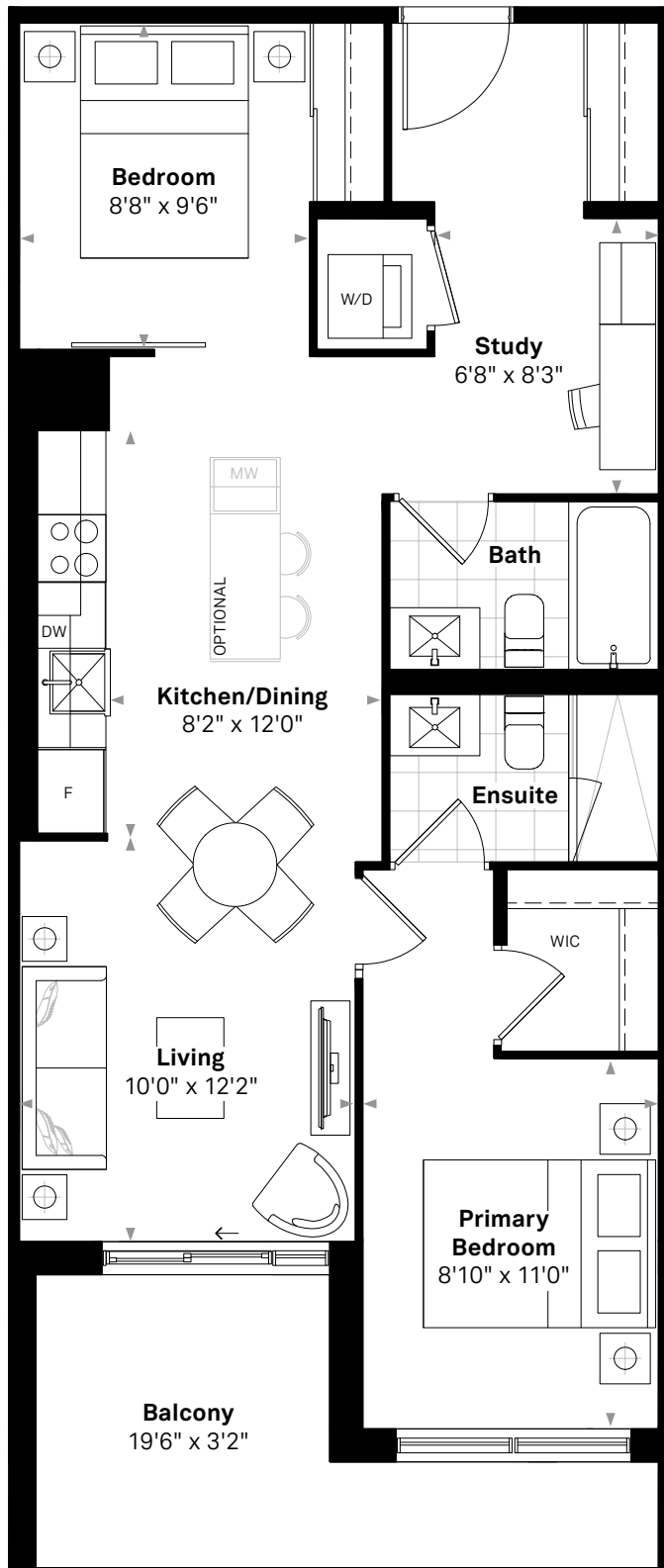
# The Georgian

The Rowe

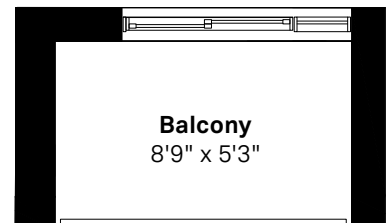
## 2 BEDROOM, 2 BATH

806 SQ.FT. (INTERIOR) + 111 SQ.FT. (BALCONY), 12 FT. KITCHEN

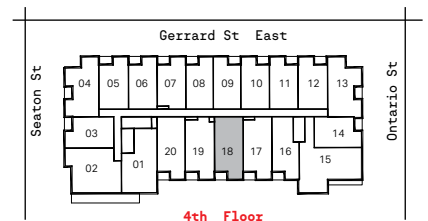
Suites 218, 318, 418



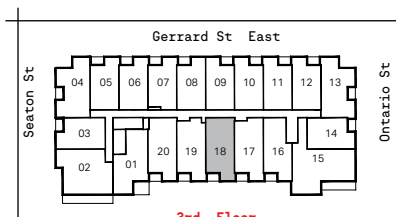
Suite 218



48 SQ.FT. (BALCONY)  
Suites 318, 418



4th Floor



3rd Floor



2nd Floor



Floor plan and specifications apply to architectural plan 2B - E. All illustrations are artist's concept. Specifications, layouts and materials are subject to change without notice. All measurements and dimensions are approximate only and not guaranteed to be exact or to scale. Dimensions may vary with actual construction and according to elevation. These floorplans and room dimensions apply to the featured unit of this model type. Window size and location may vary. Tile patterns may vary. Plan may be built as the mirror image. Bulkheads required for mechanical purposes have not been indicated. Outdoor area will vary depending on the suite location within the building. Any reference or depictions, if any, to furniture, appliances, or other related items and equipment are conceptual in nature and not included in the unit unless otherwise provided for in the agreement of purchase and sale. Nothing herein shall be relied upon as a representation or warranty, collateral agreement, or condition, express or implied, of the final plans and specifications for the project, as the final plans and specifications are subject to the final review and approval of any applicable governmental authority, the developer and its consultants and engineers. E. & O.E. January 2022 - Stafford Homes

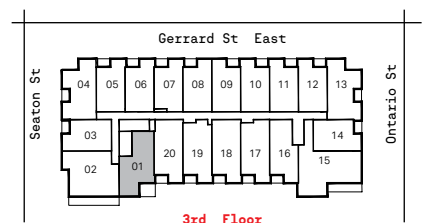
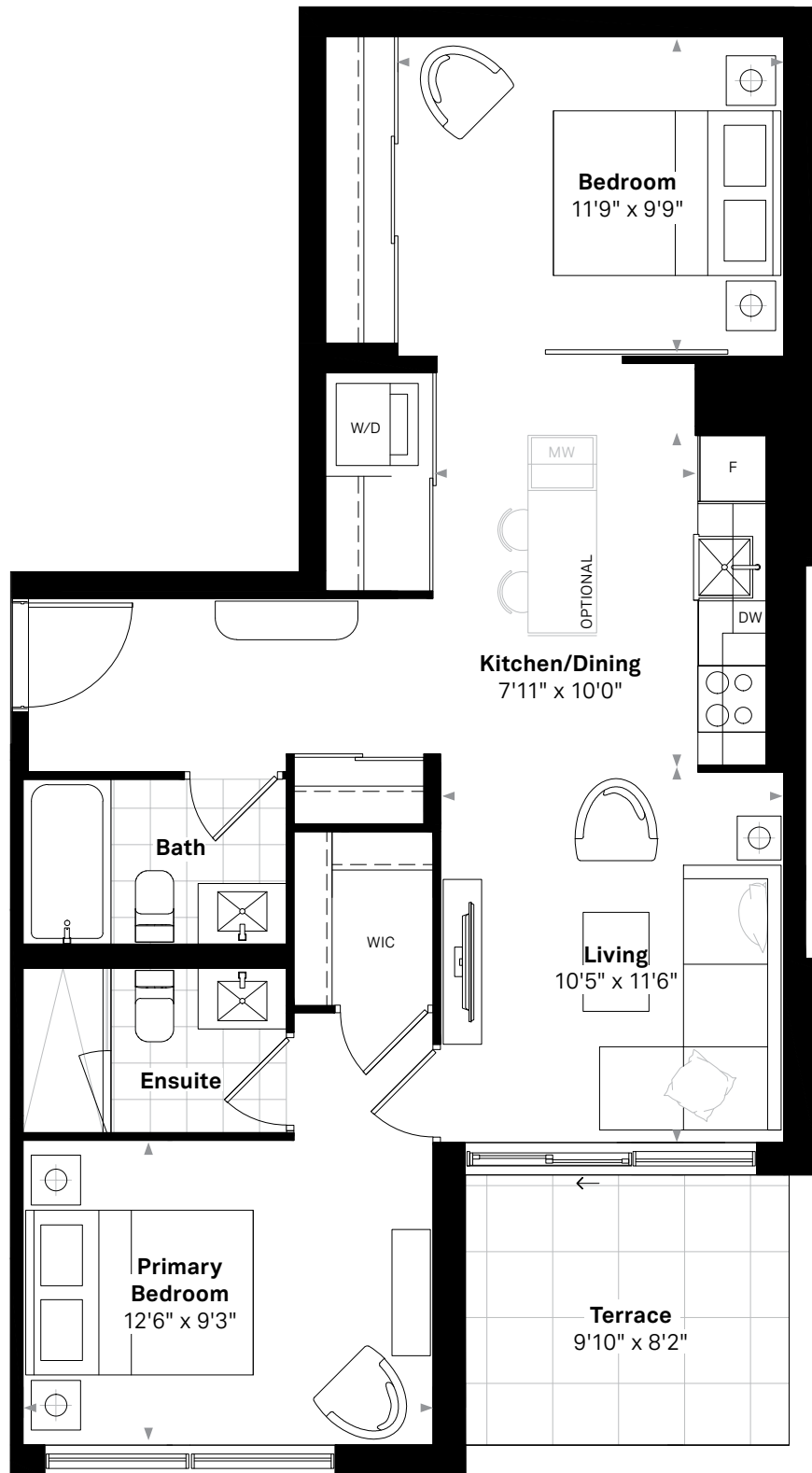
# The Georgian

The Shaw

## 2 BEDROOM, 2 BATH

825 SQ.FT. (INTERIOR) + 81 SQ.FT. (TERRACE)

Suite 301



Floor plan and specifications apply to architectural plan 2B - M. All illustrations are artist's concept. Specifications, layouts and materials are subject to change without notice. All measurements and dimensions are approximate only and not guaranteed to be exact or to scale. Dimensions may vary with actual construction and according to elevation. These floorplans and room dimensions apply to the featured unit of this model type. Window size and location may vary. Tile patterns may vary. Plan may be built as the mirror image. Bulkheads required for mechanical purposes have not been indicated. Outdoor area will vary depending on the suite location within the building. Any reference or depictions, if any, to furniture, appliances, or other related items and equipment are conceptual in nature and not included in the agreement of purchase and sale. Nothing herein shall be relied upon as a representation or warranty, collateral agreement, or condition, express or implied, of the final plans and specifications for the project, as the final plans and specifications are subject to the final review and approval of any applicable governmental authority, the developer and its consultants and engineers. E. & O.E. January 2022 - Stafford Homes

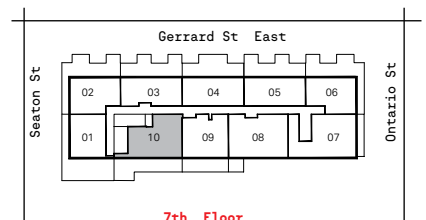
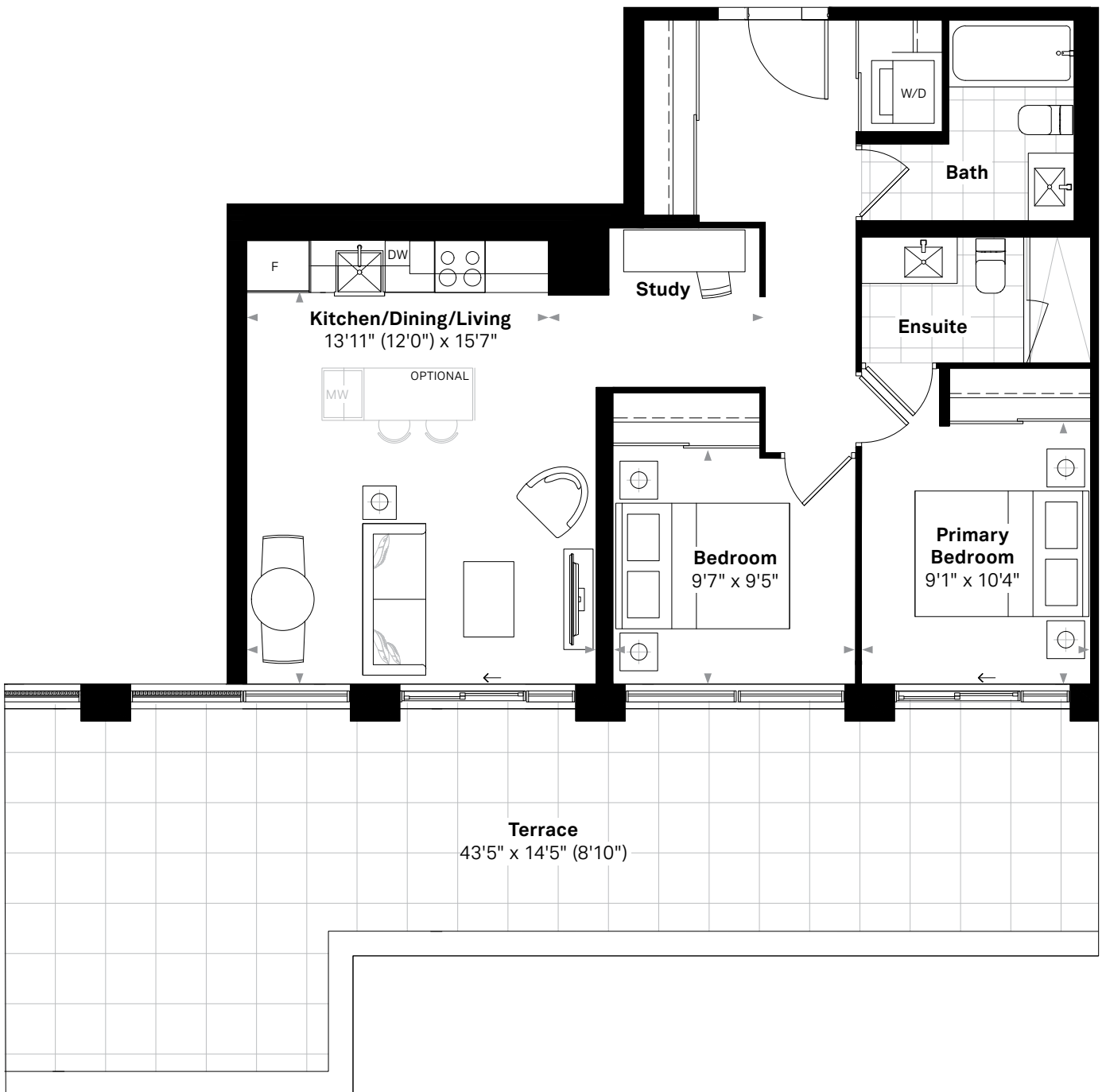
# The Georgian

## The Shelley

### 2 BEDROOM, 2 BATH

847 SQ.FT. (INTERIOR) + 456 SQ.FT. (TERRACE), 12 FT. KITCHEN

Suite 710



Floor plan and specifications apply to architectural plan 2B - R. All illustrations are artist's concept. Specifications, layouts and materials are subject to change without notice. All measurements and dimensions are approximate only and not guaranteed to be exact or to scale. Dimensions may vary with actual construction and according to elevation. These floorplans and room dimensions apply to the featured unit of this model type. Window size and location may vary. Tile patterns may vary. Plan may be built as the mirror image. Bulkheads required for mechanical purposes have not been indicated. Outdoor area will vary depending on the suite location within the building. Any reference or depictions, if any, to furniture, appliances, or other related items and equipment are conceptual in nature and not included in the unit unless otherwise provided for in the agreement of purchase and sale. Nothing herein shall be relied upon as a representation or warranty, collateral agreement, or condition, express or implied, of the final plans and specifications for the project, as the final plans and specifications are subject to the final review and approval of any applicable governmental authority, the developer and its consultants and engineers. E. & O.E. January 2022 - Stafford Homes

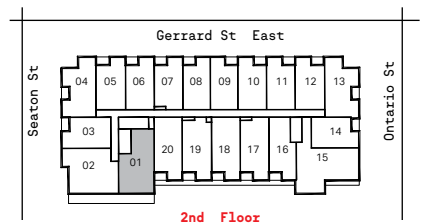
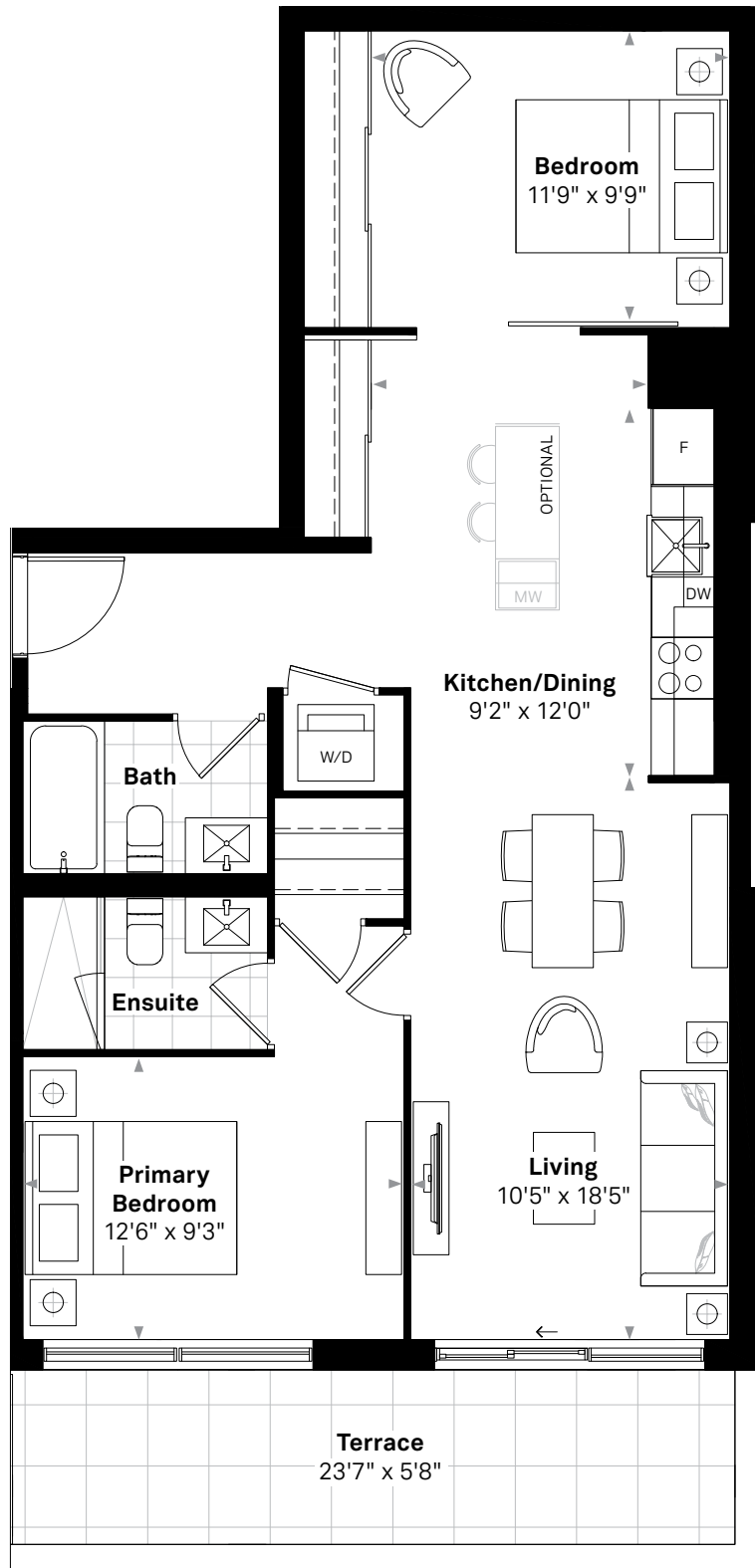
# The Georgian

The Sheraton

## 2 BEDROOM, 2 BATH

925 SQ.FT. (INTERIOR) + 135 SQ.FT. (TERRACE), 12 FT. KITCHEN

Suite 201



Floor plan and specifications apply to architectural plan 2B - I. All illustrations are artist's concept. Specifications, layouts and materials are subject to change without notice. All measurements and dimensions are approximate only and not guaranteed to be exact or to scale. Dimensions may vary with actual construction and according to elevation. These floorplans and room dimensions apply to the featured unit of this model type. Window size and location may vary. Tile patterns may vary. Plan may be built as the mirror image. Bulkheads required for mechanical purposes have not been indicated. Outdoor area will vary depending on the suite location within the building. Any reference or depictions, if any, to furniture, appliances, or other related items and equipment are conceptual in nature and not included in the unit unless otherwise provided for in the agreement of purchase and sale. Nothing herein shall be relied upon as a representation or warranty, collateral agreement, or condition, express or implied, of the final plans and specifications for the project, as the final plans and specifications are subject to the final review and approval of any applicable governmental authority, the developer and its consultants and engineers. E. & O.E. January 2022 - Stafford Homes

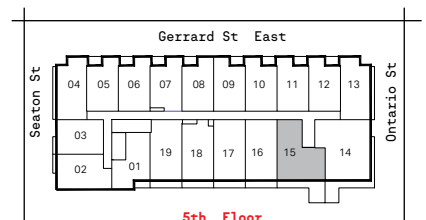
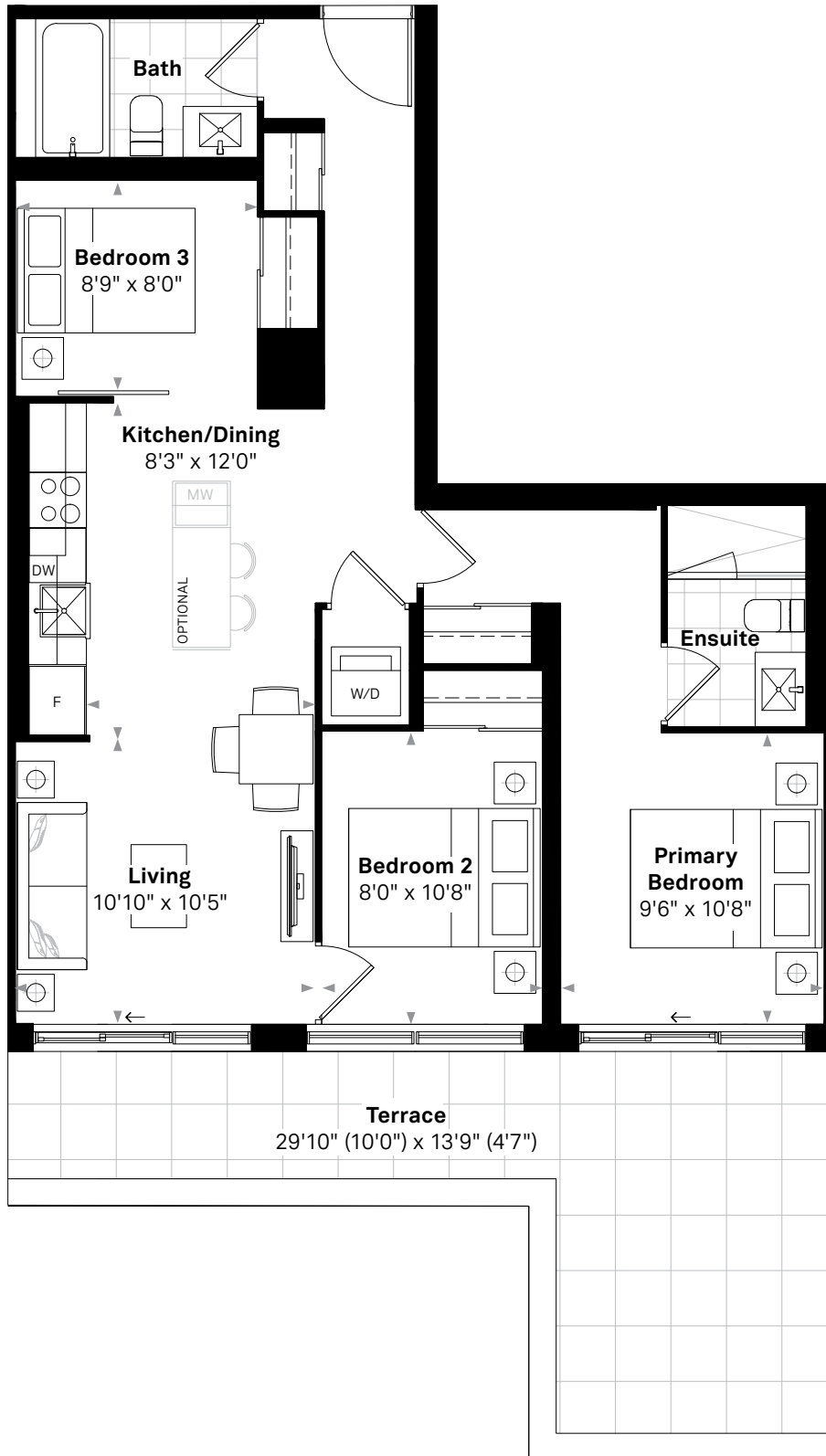
# The Georgian

## The Spencer

### 3 BEDROOM, 2 BATH

880 SQ.FT. (INTERIOR) + 229 SQ.FT. (TERRACE), 12 FT. KITCHEN

Suite 515



Floor plan and specifications apply to architectural plan 3B - D. All illustrations are artist's concept. Specifications, layouts and materials are subject to change without notice. All measurements and dimensions are approximate only and not guaranteed to be exact or to scale. Dimensions may vary with actual construction and according to elevation. These floorplans and room dimensions apply to the featured unit of this model type. Window size and location may vary. Tile patterns may vary. Plan may be built as the mirror image. Bulkheads required for mechanical purposes have not been indicated. Outdoor area will vary depending on the suite location within the building. Any reference or depictions, if any, to furniture, appliances, or other related items and equipment are conceptual in nature and not included in the unit unless otherwise provided for in the agreement of purchase and sale. Nothing herein shall be relied upon as a representation or warranty, collateral agreement, or condition, express or implied, of the final plans and specifications for the project, as the final plans and specifications are subject to the final review and approval of any applicable governmental authority, the developer and its consultants and engineers. E. & O.E. January 2022 - Stafford Homes

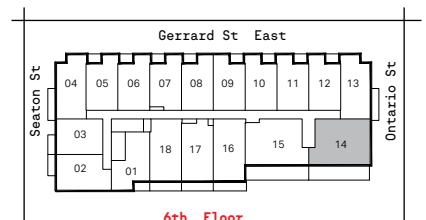
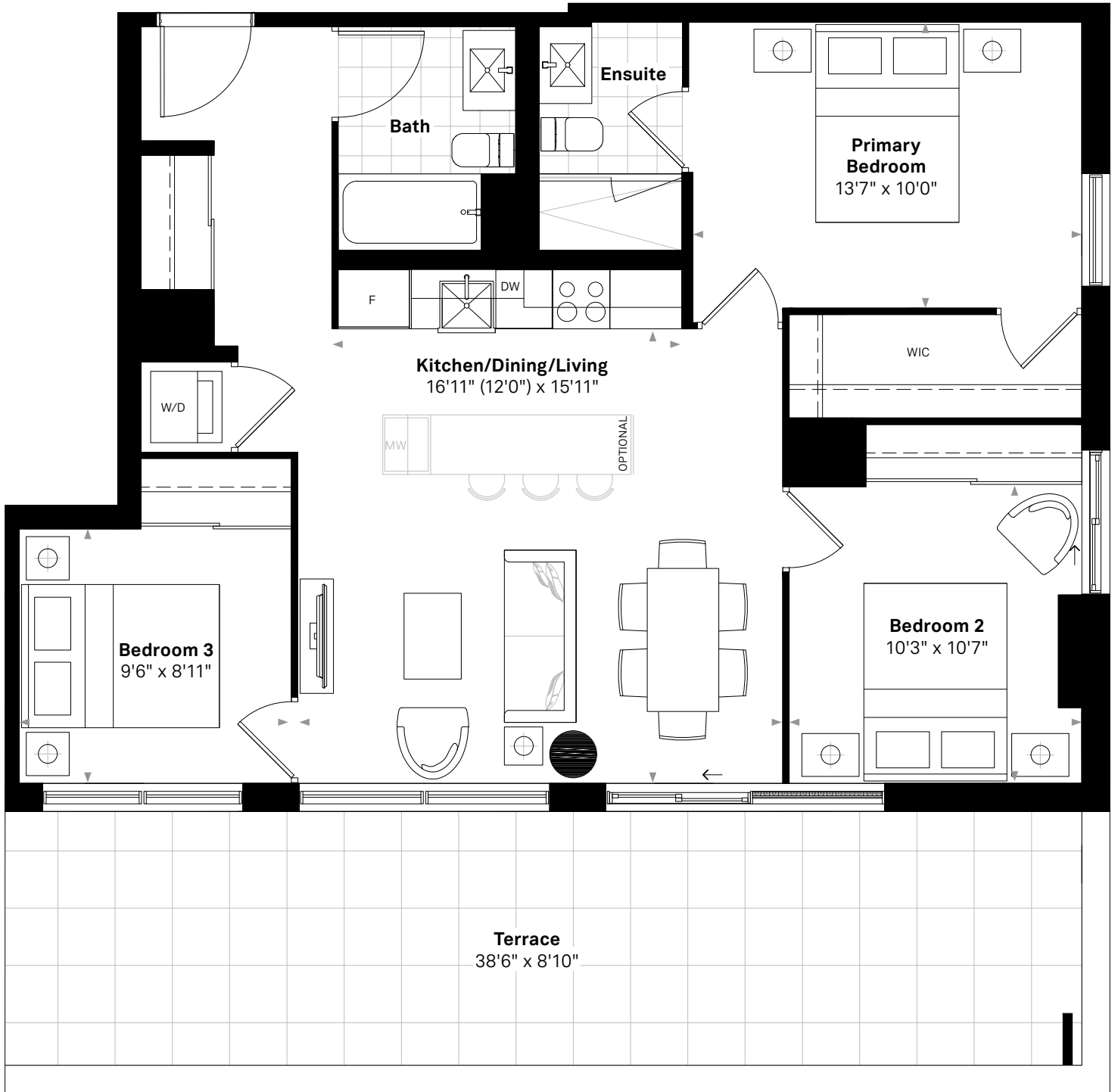
# The Georgian

## The Steele

### 3 BEDROOM, 2 BATH

1008 SQ.FT. (INTERIOR) + 332 SQ.FT. (TERRACE), 12 FT. KITCHEN

Suite 614



Floor plan and specifications apply to architectural plan 3B - G. All illustrations are artist's concept. Specifications, layouts and materials are subject to change without notice. All measurements and dimensions are approximate only and not guaranteed to be exact or to scale. Dimensions may vary with actual construction and according to elevation. These floorplans and room dimensions apply to the featured unit of this model type. Window size and location may vary. Tile patterns may vary. Plan may be built as the mirror image. Bulkheads required for mechanical purposes have not been indicated. Outdoor area will vary depending on the suite location within the building. Any reference or depictions, if any, to furniture, appliances, or other related items and equipment are conceptual in nature and not included in the unit unless otherwise provided for in the agreement of purchase and sale. Nothing herein shall be relied upon as a representation or warranty, collateral agreement, or condition, express or implied, of the final plans and specifications for the project, as the final plans and specifications are subject to the final review and approval of any applicable governmental authority, the developer and its consultants and engineers. E. & O.E. January 2022 - Stafford Homes

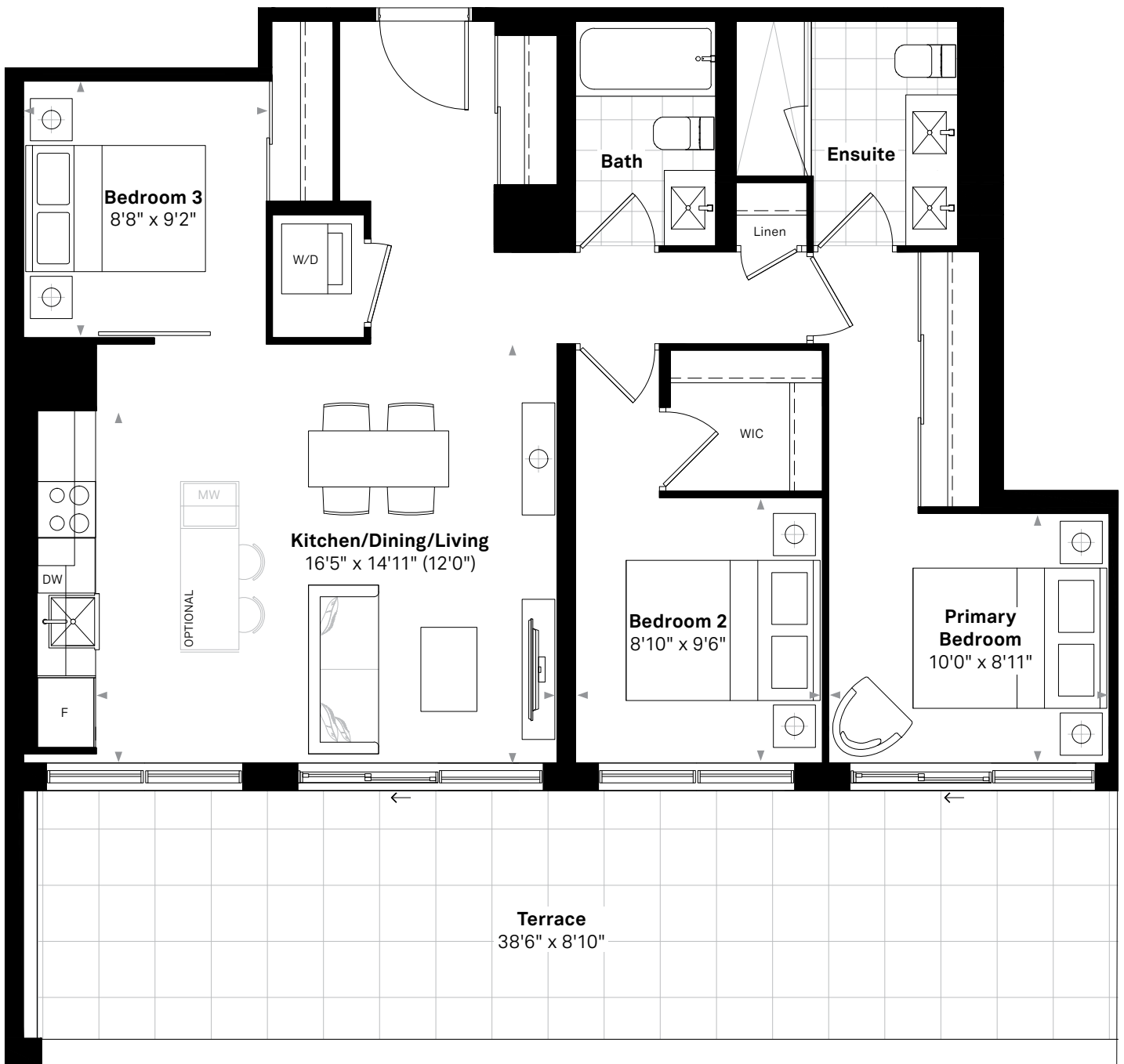
# The Georgian

## The Swift

### 3 BEDROOM, 2 BATH

1011 SQ.FT. (INTERIOR) + 342 SQ.FT. (TERRACE), 12 FT. KITCHEN

Suite 615



Floor plan and specifications apply to architectural plan 3B - F. All illustrations are artist's concept. Specifications, layouts and materials are subject to change without notice. All measurements and dimensions are approximate only and not guaranteed to be exact or to scale. Dimensions may vary with actual construction and according to elevation. These floorplans and room dimensions apply to the featured unit of this model type. Window size and location may vary. Tile patterns may vary. Plan may be built as the mirror image. Bulkheads required for mechanical purposes have not been indicated. Outdoor area will vary depending on the suite location within the building. Any reference or depictions, if any, to furniture, appliances, or other related items and equipment are conceptual in nature and not included in the unit unless otherwise provided for in the agreement of purchase and sale. Nothing herein shall be relied upon as a representation or warranty, collateral agreement, or condition, express or implied, of the final plans and specifications for the project, as the final plans and specifications are subject to the final review and approval of any applicable governmental authority, the developer and its consultants and engineers. E. & O.E. January 2022 - Stafford Homes

# The Georgian

The Thomson (BF)

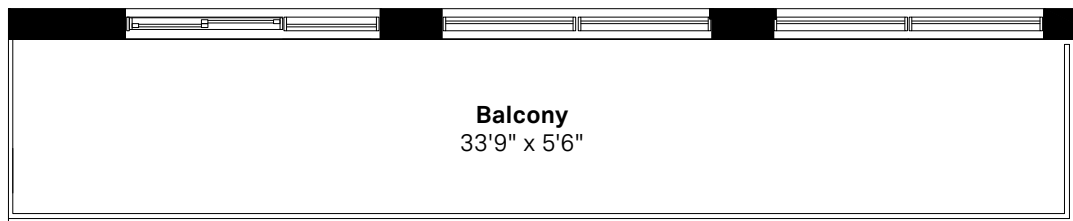
## 3 BEDROOM, 2 BATH

1084 SQ.FT. (INTERIOR) + 191 SQ.FT. (TERRACE), 12 FT. KITCHEN

Suites 202, 302

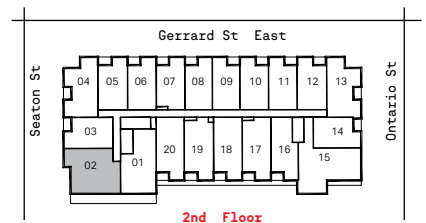
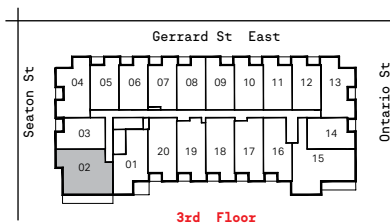


Suite 202



203 SQ.FT. (BALCONY)

Suite 302



Floor plan and specifications apply to architectural plan 3B - A - (BF). All illustrations are artist's concept. Specifications, layouts and materials are subject to change without notice. All measurements and dimensions are approximate only and not guaranteed to be exact or to scale. Dimensions may vary with actual construction and according to elevation. These floorplans and room dimensions apply to the featured unit of this model type. Window size and location may vary. Tile patterns may vary. Plan may be built as the mirror image. Bulkheads required for mechanical purposes have not been indicated. Outdoor area will vary depending on the suite location within the building. Any reference or depictions, if any, to furniture, appliances, or other related items and equipment are conceptual in nature and not included in the unit unless otherwise provided for in the agreement of purchase and sale. Nothing herein shall be relied upon as a representation or warranty, collateral agreement, or condition, express or implied, of the final plans and specifications for the project, as the final plans and specifications are subject to the final review and approval of any applicable governmental authority, the developer and its consultants and engineers. E. & O.E. January 2022 - Stafford Homes



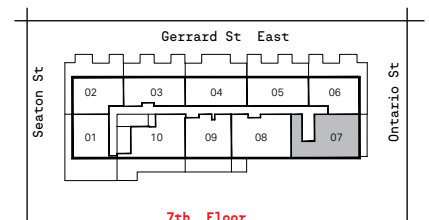
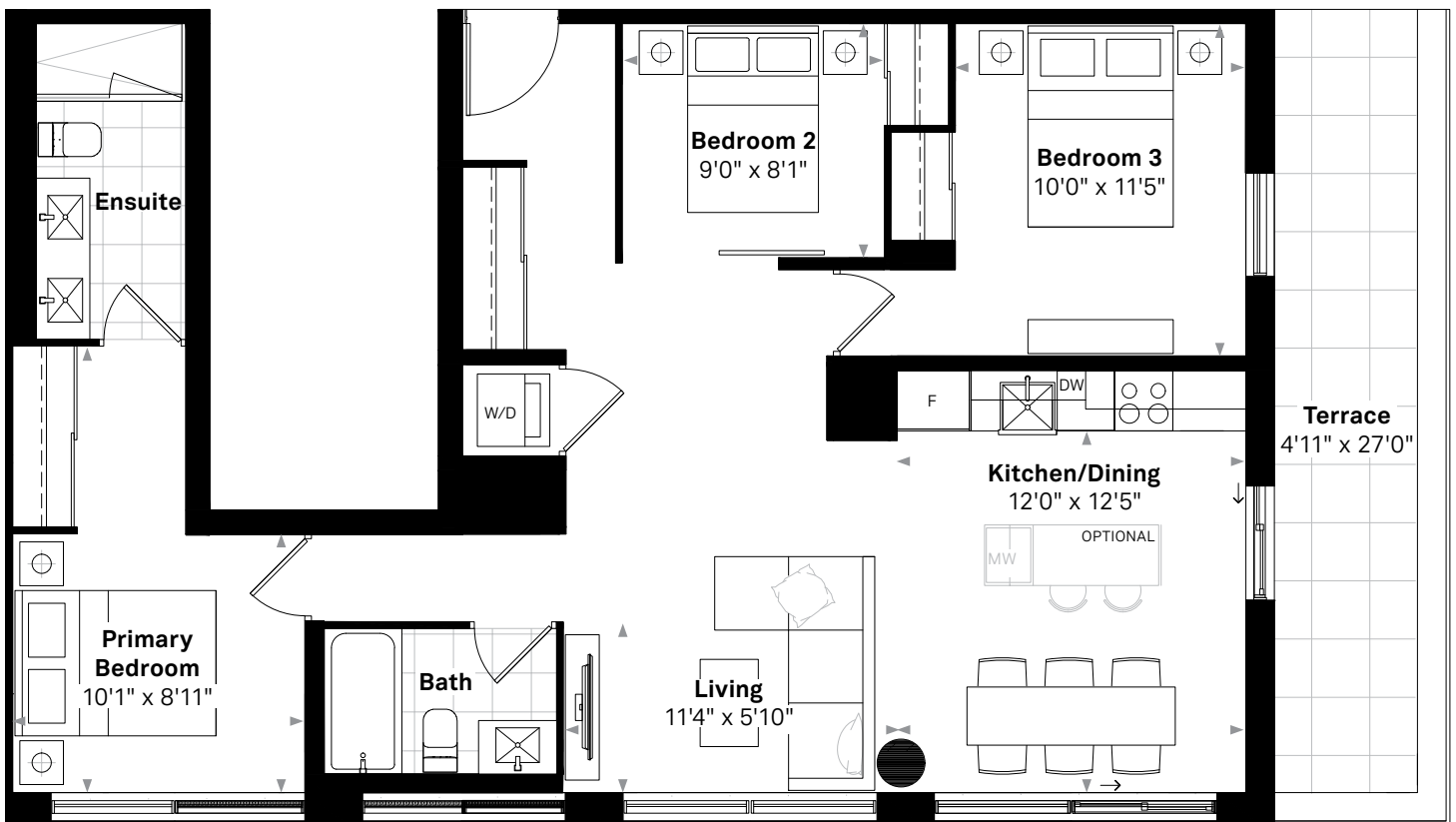
# The Georgian

## The Turner

### 3 BEDROOM+DEN, 2 BATH

1084 SQ.FT. (INTERIOR) + 131 SQ.FT. (TERRACE), 12 FT. KITCHEN

Suite 707



Floor plan and specifications apply to architectural plan 3B - B. All illustrations are artist's concept. Specifications, layouts and materials are subject to change without notice. All measurements and dimensions are approximate only and not guaranteed to be exact or to scale. Dimensions may vary with actual construction and according to elevation. These floorplans and room dimensions apply to the featured unit of this model type. Window size and location may vary. Tile patterns may vary. Plan may be built as the mirror image. Bulkheads required for mechanical purposes have not been indicated. Outdoor area will vary depending on the suite location within the building. Any reference or depictions, if any, to furniture, appliances, or other related items and equipment are conceptual in nature and not included in the unit unless otherwise provided for in the agreement of purchase and sale. Nothing herein shall be relied upon as a representation or warranty, collateral agreement, or condition, express or implied, of the final plans and specifications for the project, as the final plans and specifications are subject to the final review and approval of any applicable governmental authority, the developer and its consultants and engineers. E. & O.E. January 2022 - Stafford Homes

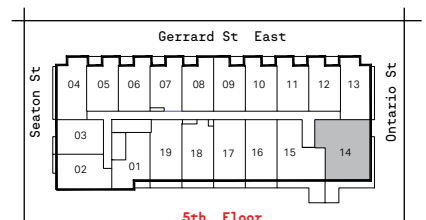
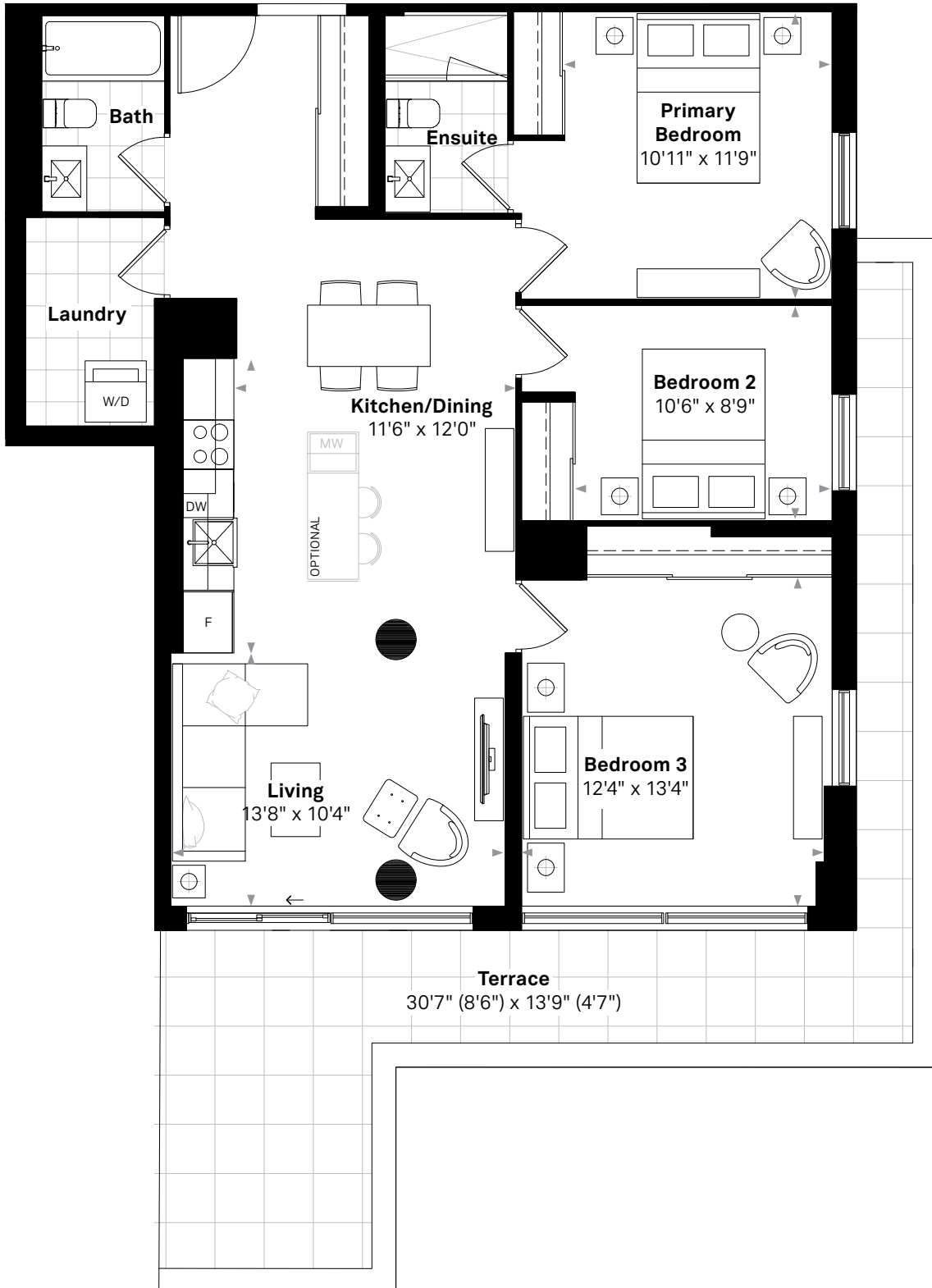
# The Georgian

## The Victoria

### 3 BEDROOM, 2 BATH

1173 SQ.FT. (INTERIOR) + 281 SQ.FT. (TERRACE), 12 FT. KITCHEN

Suite 514



Floor plan and specifications apply to architectural plan 3B - E. All illustrations are artist's concept. Specifications, layouts and materials are subject to change without notice. All measurements and dimensions are approximate only and not guaranteed to be exact or to scale. Dimensions may vary with actual construction and according to elevation. These floorplans and room dimensions apply to the featured unit of this model type. Window size and location may vary. Tile patterns may vary. Plan may be built as the mirror image. Bulkheads required for mechanical purposes have not been indicated. Outdoor area will vary depending on the suite location within the building. Any reference or depictions, if any, to furniture, appliances, or other related items and equipment are conceptual in nature and not included in the unit unless otherwise provided for in the agreement of purchase and sale. Nothing herein shall be relied upon as a representation or warranty, collateral agreement, or condition, express or implied, of the final plans and specifications for the project, as the final plans and specifications are subject to the final review and approval of any applicable governmental authority, the developer and its consultants and engineers. E. & O.E. January 2022 - Stafford Homes