

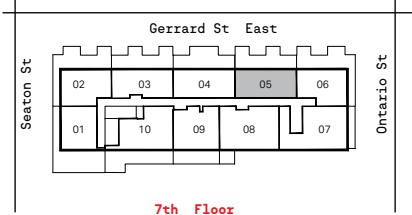
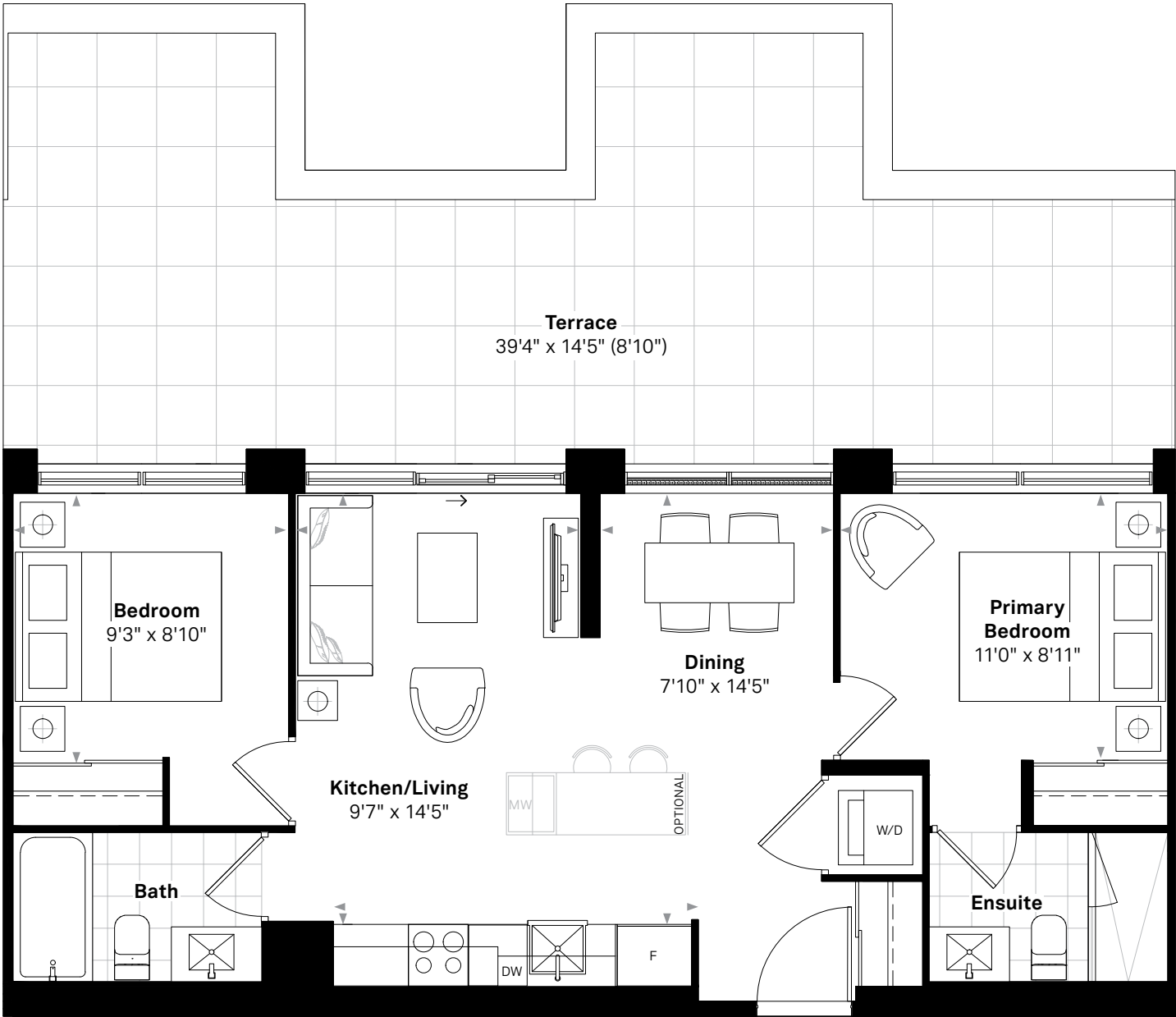
The Georgian

The Lyly

2 BEDROOM, 2 BATH

728 SQ.FT. (INTERIOR) + 449 SQ.FT. (TERRACE), 12 FT. KITCHEN

Suite 705



Floor plan and specifications apply to architectural plan 2B - P. All illustrations are artist's concept. Specifications, layouts and materials are subject to change without notice. All measurements and dimensions are approximate only and not guaranteed to be exact or to scale. Dimensions may vary with actual construction and according to elevation. These floorplans and room dimensions apply to the featured unit of this model type. Window size and location may vary. Tile patterns may vary. Plan may be built as the mirror image. Bulkheads required for mechanical purposes have not been indicated. Outdoor area will vary depending on the suite location within the building. Any reference or depictions, if any, to furniture, appliances, or other related items and equipment are conceptual in nature and not included in the unit unless otherwise provided for in the agreement of purchase and sale. Nothing herein shall be relied upon as a representation or warranty, collateral agreement, or condition, express or implied, of the final plans and specifications for the project, as the final plans and specifications are subject to the final review and approval of any applicable governmental authority, the developer and its consultants and engineers. E. & O.E. January 2022 – Stafford Homes

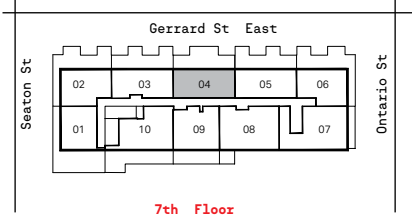
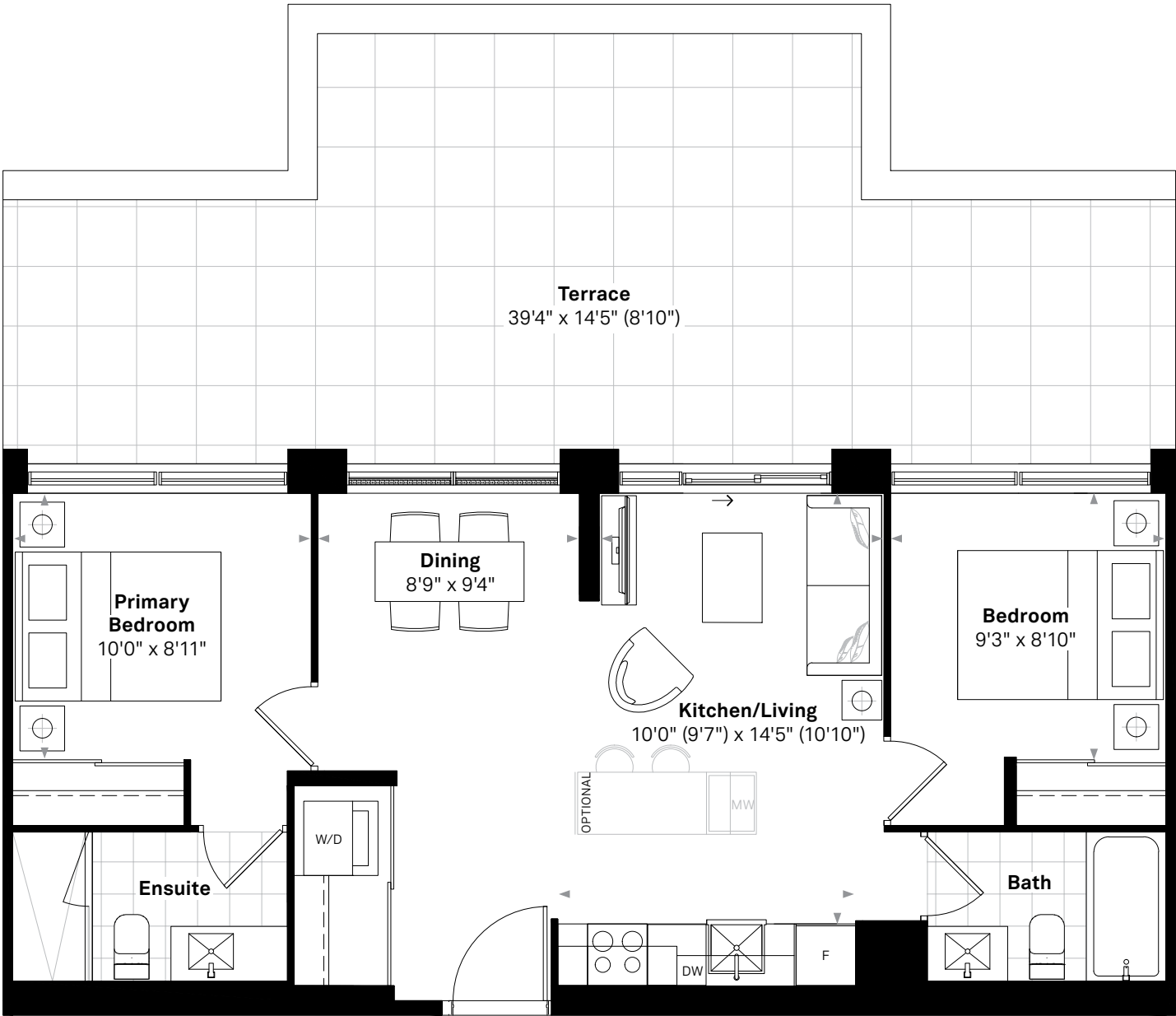
The Georgian

The Macfarren

2 BEDROOM, 2 BATH

728 SQ.FT. (INTERIOR) + 451 SQ.FT. (TERRACE)

Suite 704



Floor plan and specifications apply to architectural plan 2B - V. All illustrations are artist's concept. Specifications, layouts and materials are subject to change without notice. All measurements and dimensions are approximate only and not guaranteed to be exact or to scale. Dimensions may vary with actual construction and according to elevation. These floorplans and room dimensions apply to the featured unit of this model type. Window size and location may vary. Tile patterns may vary. Plan may be built as the mirror image. Bulkheads required for mechanical purposes have not been indicated. Outdoor area will vary depending on the suite location within the building. Any reference or depictions, if any, to furniture, appliances, or other related items and equipment are conceptual in nature and not included in the unit unless otherwise provided for in the agreement of purchase and sale. Nothing herein shall be relied upon as a representation or warranty, collateral agreement, or condition, express or implied, of the final plans and specifications for the project, as the final plans and specifications are subject to the final review and approval of any applicable governmental authority, the developer and its consultants and engineers. E. & O.E. January 2022 – Stafford Homes

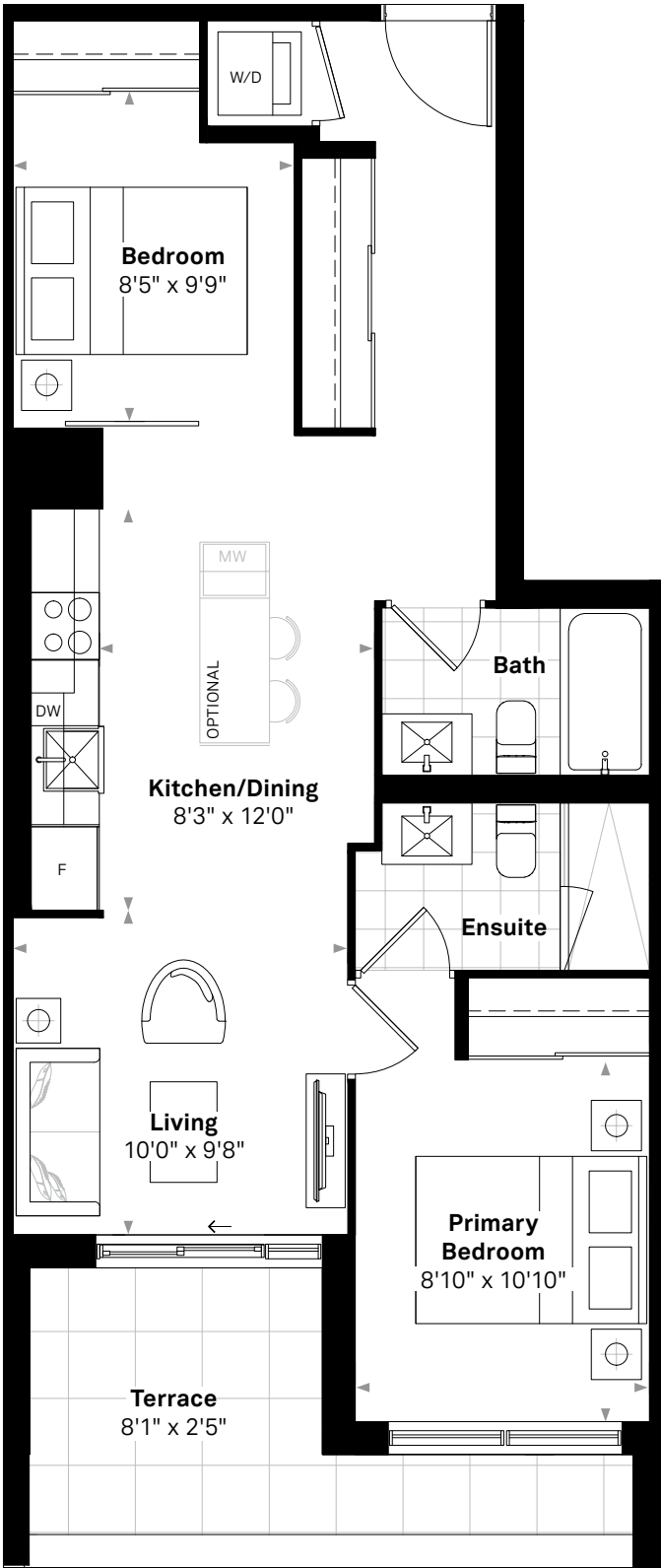
The Georgian

The Moore

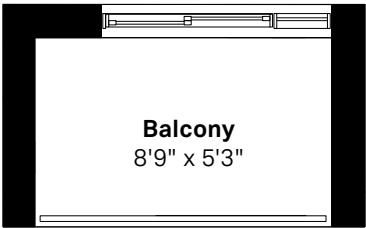
2 BEDROOM, 2 BATH

729 SQ.FT. (INTERIOR) + 92 SQ.FT. (TERRACE), 12 FT. KITCHEN

Suites 216, 316, 416



Suite 216



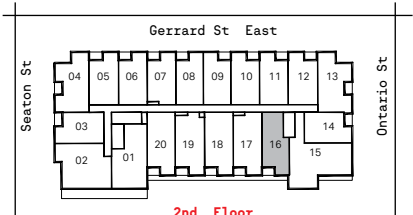
49 SQ.FT. (BALCONY)
Suites 316, 416



4th Floor



3rd Floor



2nd Floor



Floor plan and specifications apply to architectural plan 2B - G. All illustrations are artist's concept. Specifications, layouts and materials are subject to change without notice. All measurements and dimensions are approximate only and not guaranteed to be exact or to scale. Dimensions may vary with actual construction and according to elevation. These floorplans and room dimensions apply to the featured unit of this model type. Window size and location may vary. Tile patterns may vary. Plan may be built as the mirror image. Bulkheads required for mechanical purposes have not been indicated. Outdoor area will vary depending on the suite location within the building. Any reference or depictions, if any, to furniture, appliances, or other related items and equipment are conceptual in nature and not included in the unit unless otherwise provided for in the agreement of purchase and sale. Nothing herein shall be relied upon as a representation or warranty, collateral agreement, or condition, express or implied, of the final plans and specifications for the project, as the final plans and specifications are subject to the final review and approval of any applicable governmental authority, the developer and its consultants and engineers. E. & O.E. January 2022 – Stafford Homes

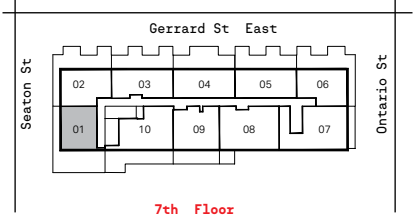
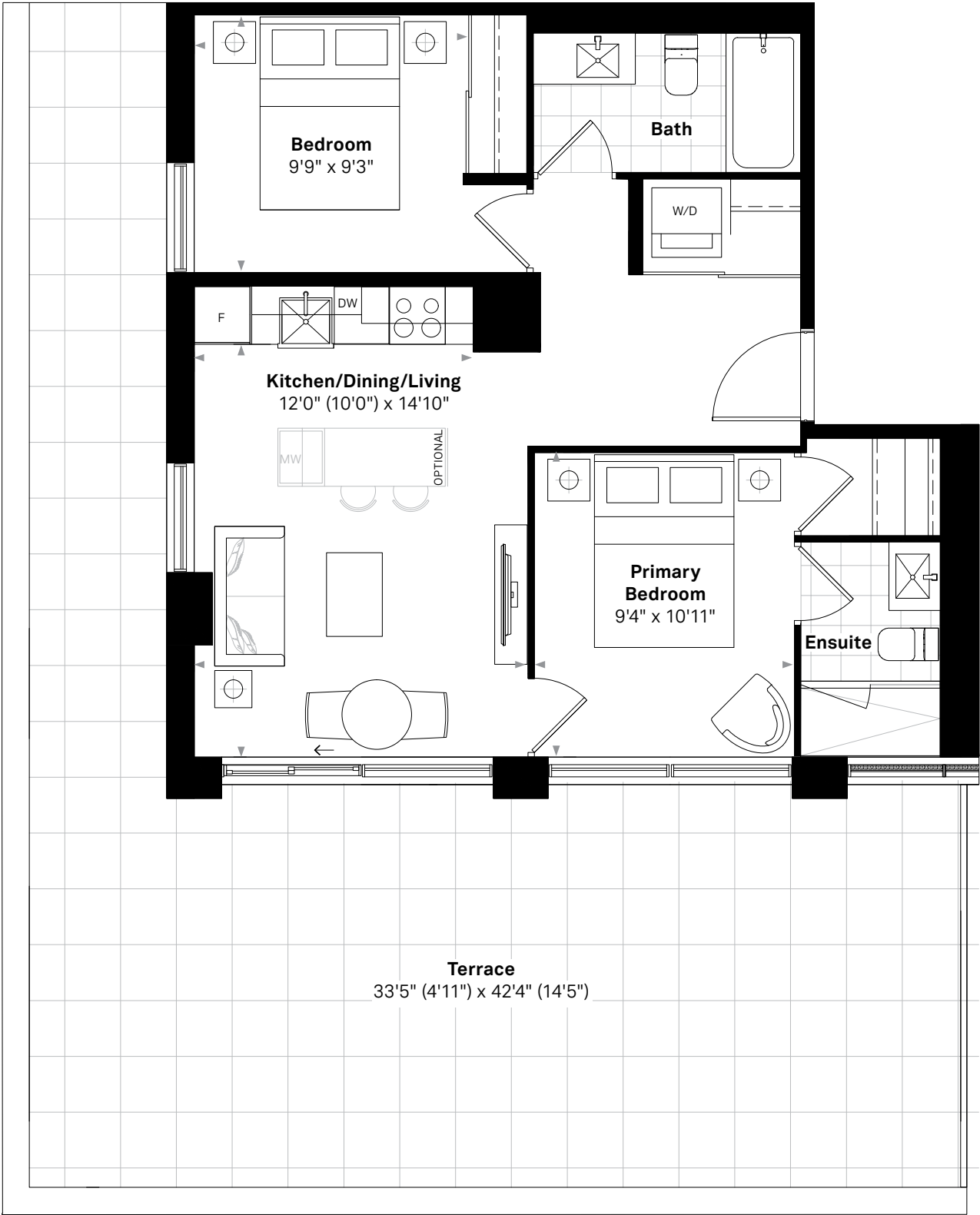
The Georgian

The Motif

2 BEDROOM, 2 BATH

735 SQ.FT. (INTERIOR) + 619 SQ.FT. (TERRACE)

Suite 701



Floor plan and specifications apply to architectural plan 2B - S. All illustrations are artist's concept. Specifications, layouts and materials are subject to change without notice. All measurements and dimensions are approximate only and not guaranteed to be exact or to scale. Dimensions may vary with actual construction and according to elevation. These floorplans and room dimensions apply to the featured unit of this model type. Window size and location may vary. Tile patterns may vary. Plan may be built as the mirror image. Bulkheads required for mechanical purposes have not been indicated. Outdoor area will vary depending on the suite location within the building. Any reference or depictions, if any, to furniture, appliances, or other related items and equipment are conceptual in nature and not included in the unit unless otherwise provided for in the agreement of purchase and sale. Nothing herein shall be relied upon as a representation or warranty, collateral agreement, or condition, express or implied, of the final plans and specifications for the project, as the final plans and specifications are subject to the final review and approval of any applicable governmental authority, the developer and its consultants and engineers. E. & O.E. January 2022 – Stafford Homes

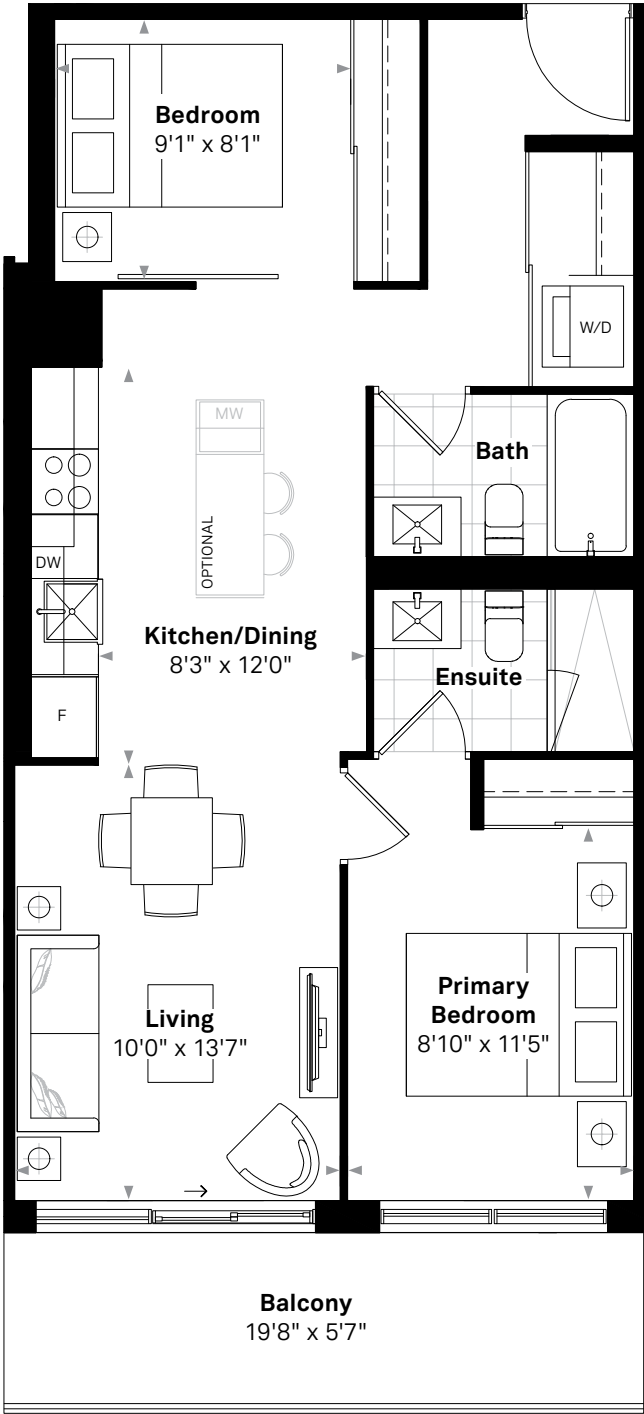
The Georgian

The Nightingale

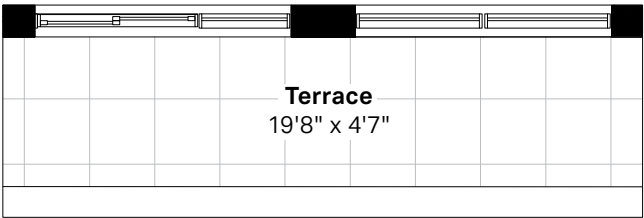
2 BEDROOM, 2 BATH

738 SQ.FT. (INTERIOR) + 110 SQ.FT. (BALCONY), 12 FT. KITCHEN

Suites 519, 618

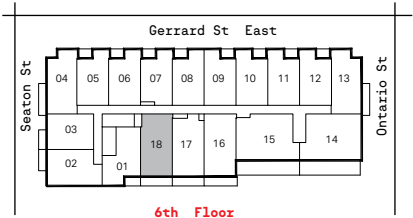


Suite 618



90 SQ.FT. (TERRACE)

Suite 519



Floor plan and specifications apply to architectural plan 2B - Y. All illustrations are artist's concept. Specifications, layouts and materials are subject to change without notice. All measurements and dimensions are approximate only and not guaranteed to be exact or to scale. Dimensions may vary with actual construction and according to elevation. These floorplans and room dimensions apply to the featured unit of this model type. Window size and location may vary. Tile patterns may vary. Plan may be built as the mirror image. Bulkheads required for mechanical purposes have not been indicated. Outdoor area will vary depending on the suite location within the building. Any reference or depictions, if any, to furniture, appliances, or other related items and equipment are conceptual in nature and not included in the unit unless otherwise provided for in the agreement of purchase and sale. Nothing herein shall be relied upon as a representation or warranty, collateral agreement, or condition, express or implied, of the final plans and specifications for the project, as the final plans and specifications are subject to the final review and approval of any applicable governmental authority, the developer and its consultants and engineers. E. & O.E. January 2022 – Stafford Homes

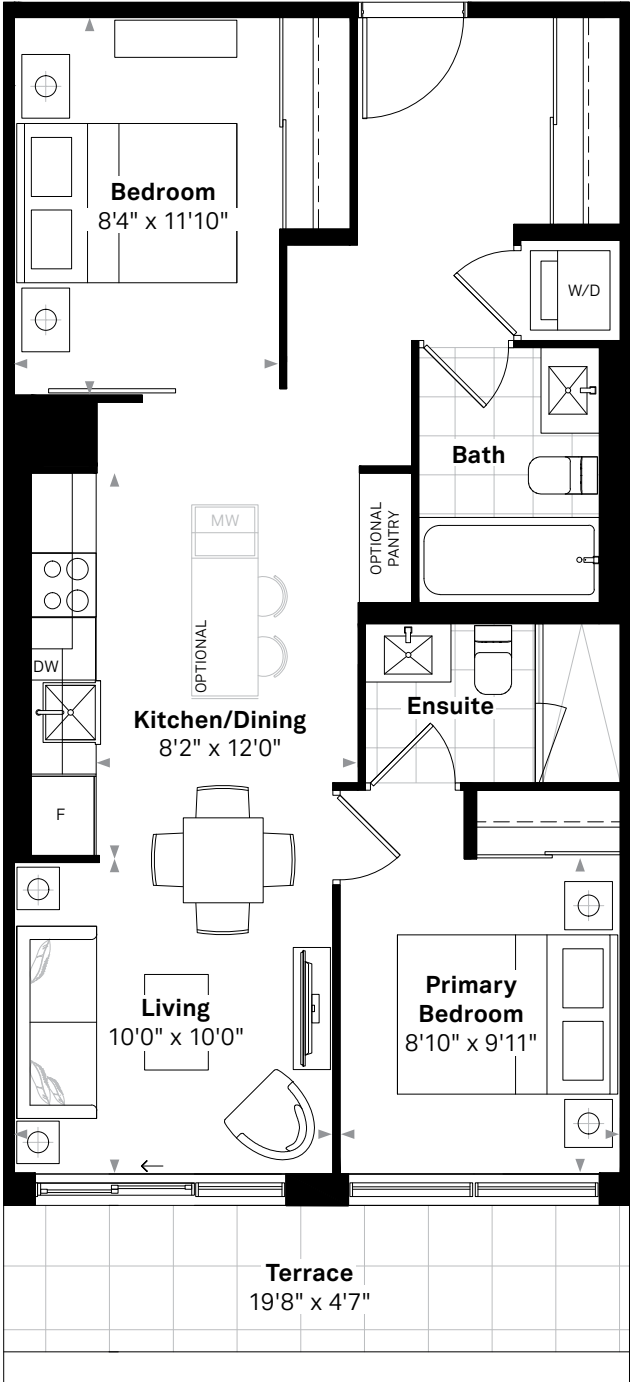
The Georgian

The Ornamental

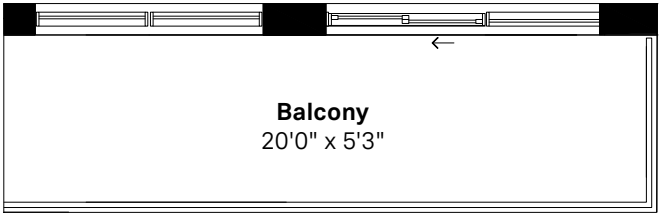
2 BEDROOM, 2 BATH

745 SQ.FT. (INTERIOR) + 90 SQ.FT. (TERRACE), 12 FT. KITCHEN

Suites 517, 616



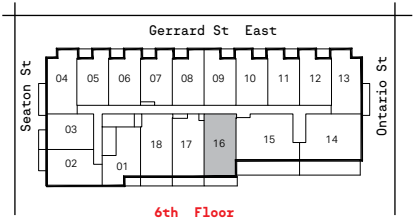
Suite 517



753 SQ.FT. (INTERIOR) +

114 SQ.FT. (BALCONY)

Suite 616



Floor plan and specifications apply to architectural plan 2B - ZA. All illustrations are artist's concept. Specifications, layouts and materials are subject to change without notice. All measurements and dimensions are approximate only and not guaranteed to be exact or to scale. Dimensions may vary with actual construction and according to elevation. These floorplans and room dimensions apply to the featured unit of this model type. Window size and location may vary. Tile patterns may vary. Plan may be built as the mirror image. Bulkheads required for mechanical purposes have not been indicated. Outdoor area will vary depending on the suite location within the building. Any reference or depictions, if any, to furniture, appliances, or other related items and equipment are conceptual in nature and not included in the unit unless otherwise provided for in the agreement of purchase and sale. Nothing herein shall be relied upon as a representation or warranty, collateral agreement, or condition, express or implied, of the final plans and specifications for the project, as the final plans and specifications are subject to the final review and approval of any applicable governmental authority, the developer and its consultants and engineers. E. & O.E. January 2022 – Stafford Homes

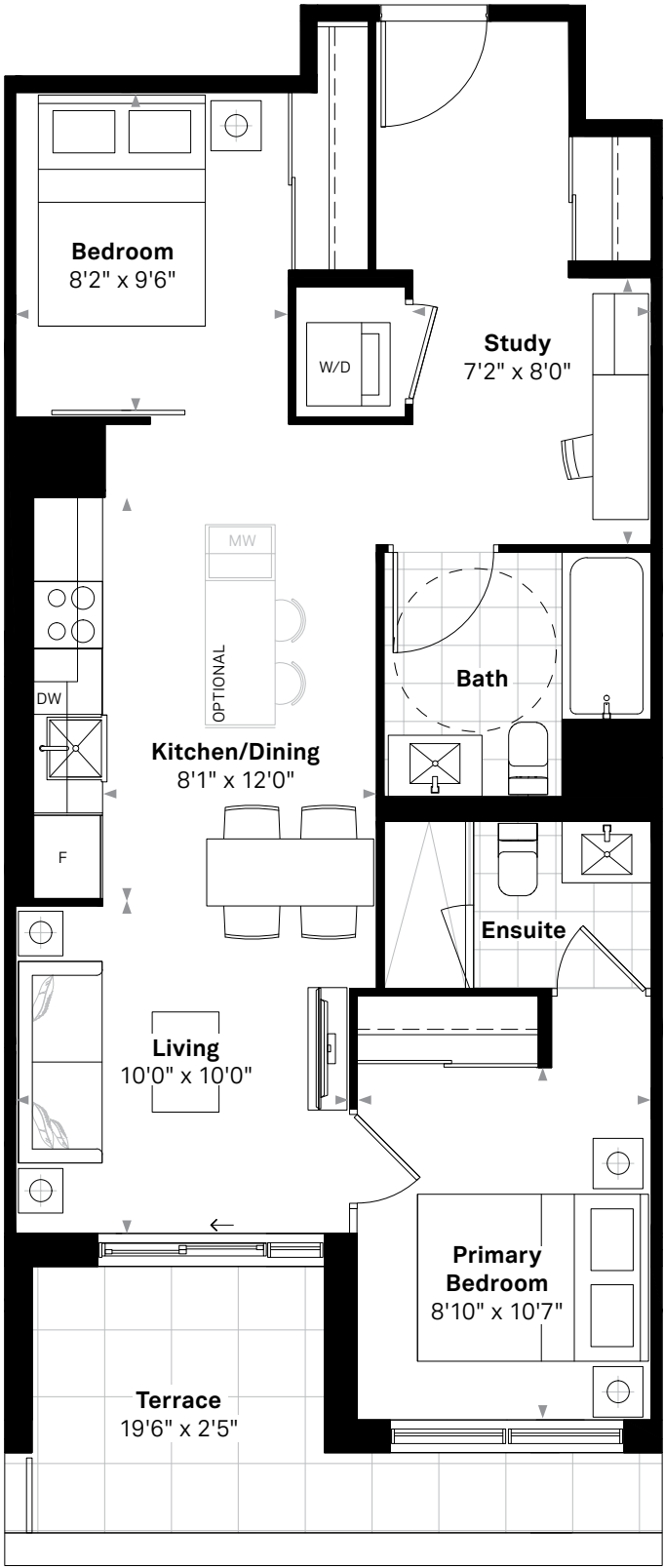
The Georgian

The Parke (BF)

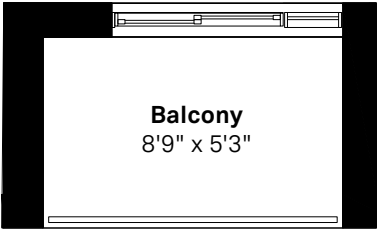
2 BEDROOM, 2 BATH

778 SQ.FT. (INTERIOR) + 96 SQ.FT. (TERRACE), 12 FT. KITCHEN

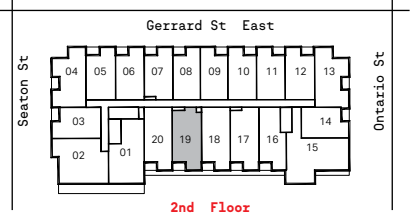
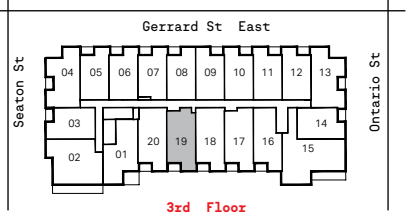
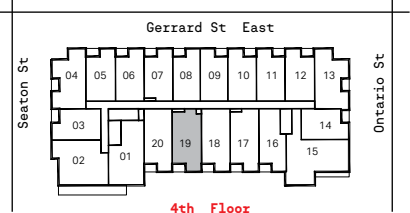
Suites 219, 319, 419



Suite 219



49 SQ.FT. (BALCONY)
Suites 319, 419



Floor plan and specifications apply to architectural plan 2B - D - (BF). All illustrations are artist's concept. Specifications, layouts and materials are subject to change without notice. All measurements and dimensions are approximate only and not guaranteed to be exact or to scale. Dimensions may vary with actual construction and according to elevation. These floorplans and room dimensions apply to the featured unit of this model type. Window size and location may vary. Tile patterns may vary. Plan may be built as the mirror image. Bulkheads required for mechanical purposes have not been indicated. Outdoor area will vary depending on the suite location within the building. Any reference or depictions, if any, to furniture, appliances, or other related items and equipment are conceptual in nature and not included in the unit unless otherwise provided for in the agreement of purchase and sale. Nothing herein shall be relied upon as a representation or warranty, collateral agreement, or condition, express or implied, of the final plans and specifications for the project, as the final plans and specifications are subject to the final review and approval of any applicable governmental authority, the developer and its consultants and engineers. E. & O.E. January 2022 – Stafford Homes

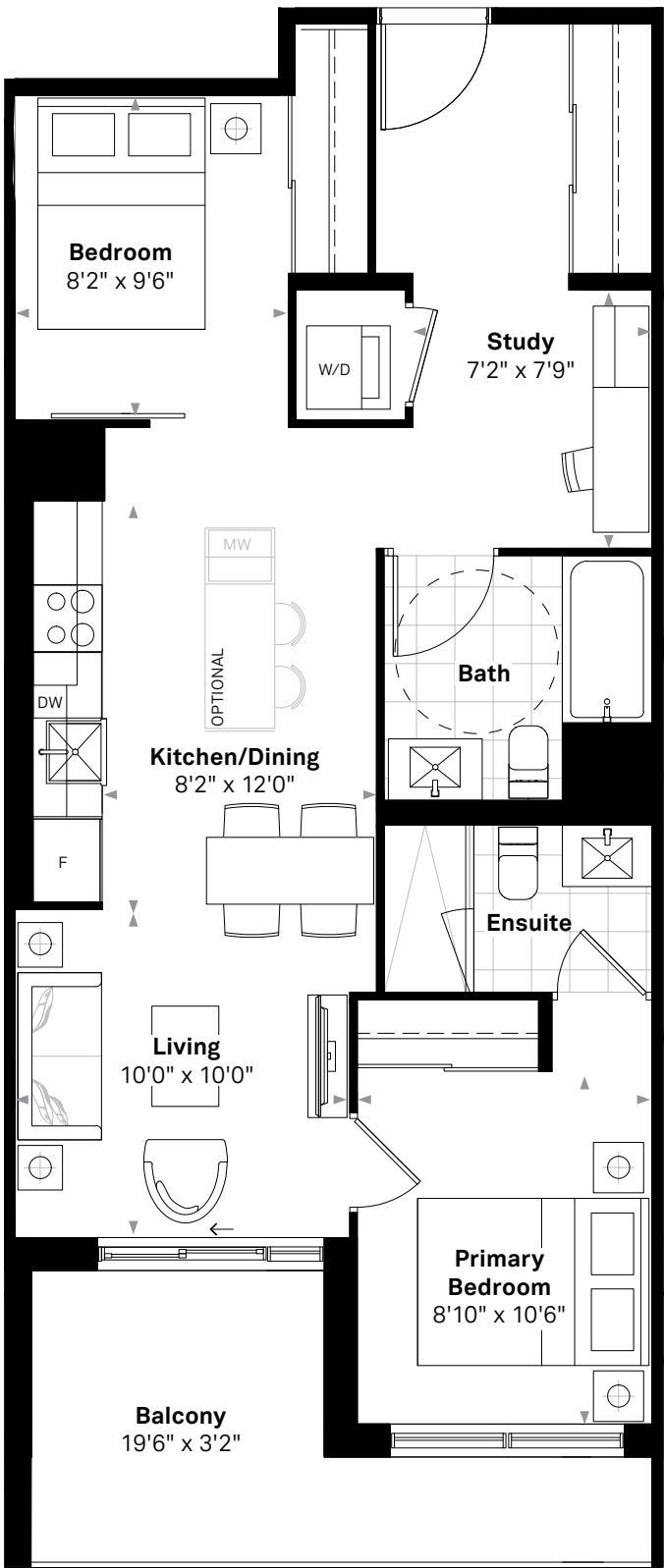
The Georgian

The Potter

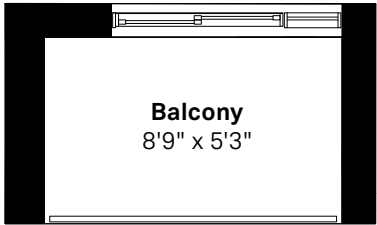
2 BEDROOM, 2 BATH

787 SQ.FT. (INTERIOR) + 111 SQ.FT. (BALCONY), 12 FT. KITCHEN

Suites 217 (BF), 317 (BF), 417



Suite 217



49 SQ.FT. (BALCONY)

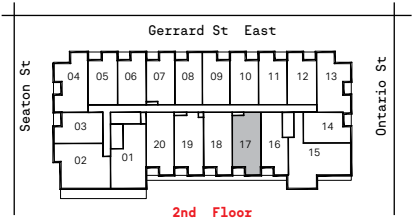
Suites 317, 417



4th Floor



3rd Floor



2nd Floor



Floor plan and specifications apply to architectural plan 2B - F - (BF #217,#317). All illustrations are artist's concept. Specifications, layouts and materials are subject to change without notice. All measurements and dimensions are approximate only and not guaranteed to be exact or to scale. Dimensions may vary with actual construction and according to elevation. These floorplans and room dimensions apply to the featured unit of this model type. Window size and location may vary. Tile patterns may vary. Plan may be built as the mirror image. Bulkheads required for mechanical purposes have not been indicated. Outdoor area will vary depending on the suite location within the building. Any reference or depictions, if any, to furniture, appliances, or other related items and equipment are conceptual in nature and not included in the unit unless otherwise provided for in the agreement of purchase and sale. Nothing herein shall be relied upon as a representation or warranty, collateral agreement, or condition, express or implied, of the final plans and specifications for the project, as the final plans and specifications are subject to the final review and approval of any applicable governmental authority, the developer and its consultants and engineers. E. & O.E. January 2022 – Stafford Homes

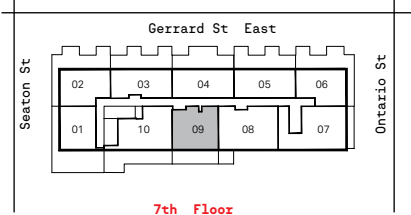
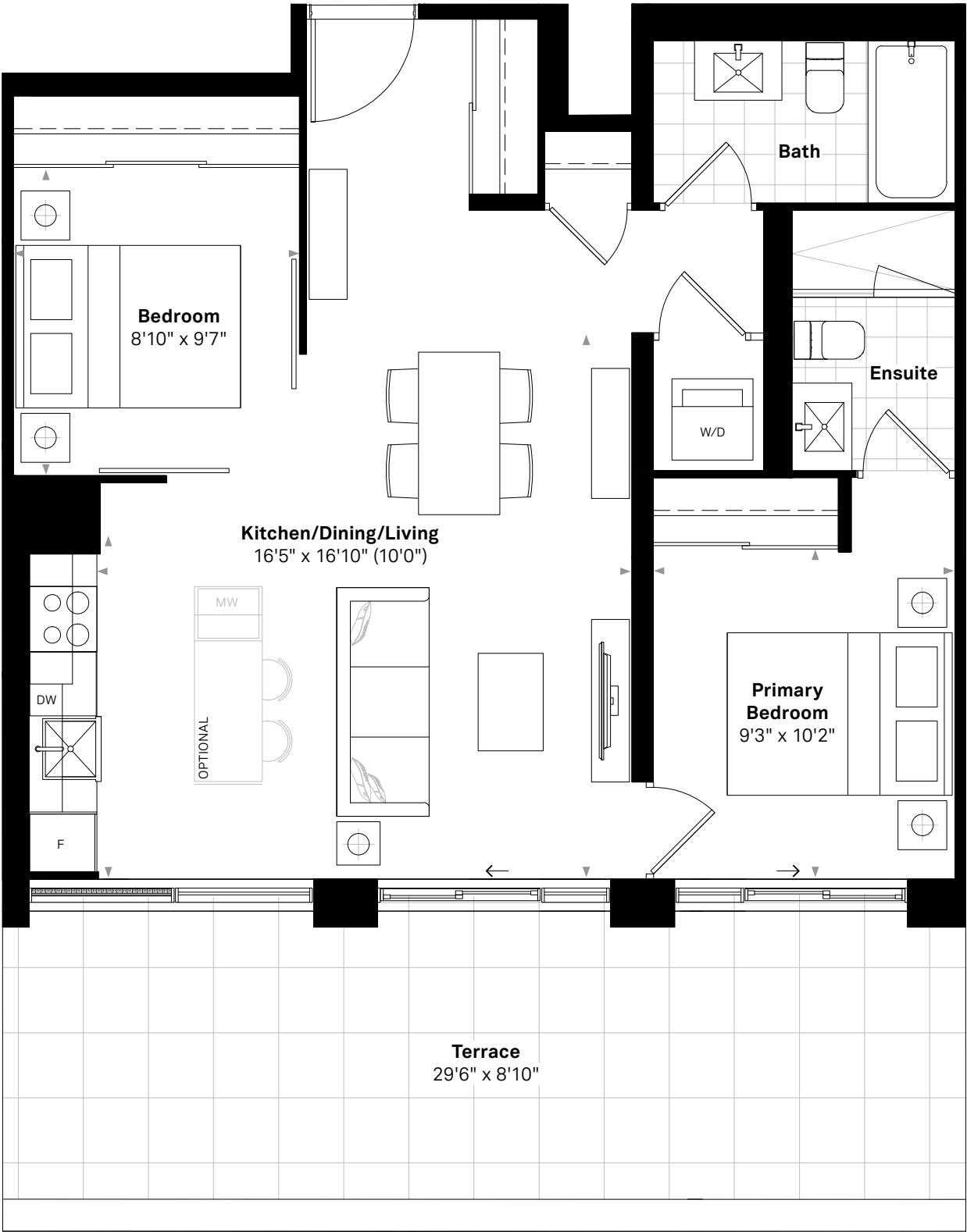
The Georgian

The Regency

2 BEDROOM, 2 BATH

798 SQ.FT. (INTERIOR) + 262 SQ.FT. (TERRACE)

Suite 709



Floor plan and specifications apply to architectural plan 2B - N. All illustrations are artist's concept. Specifications, layouts and materials are subject to change without notice. All measurements and dimensions are approximate only and not guaranteed to be exact or to scale. Dimensions may vary with actual construction and according to elevation. These floorplans and room dimensions apply to the featured unit of this model type. Window size and location may vary. Tile patterns may vary. Plan may be built as the mirror image. Bulkheads required for mechanical purposes have not been indicated. Outdoor area will vary depending on the suite location within the building. Any reference or depictions, if any, to furniture, appliances, or other related items and equipment are conceptual in nature and not included in the unit unless otherwise provided for in the agreement of purchase and sale. Nothing herein shall be relied upon as a representation or warranty, collateral agreement, or condition, express or implied, of the final plans and specifications for the project, as the final plans and specifications are subject to the final review and approval of any applicable governmental authority, the developer and its consultants and engineers. E. & O.E. January 2022 – Stafford Homes

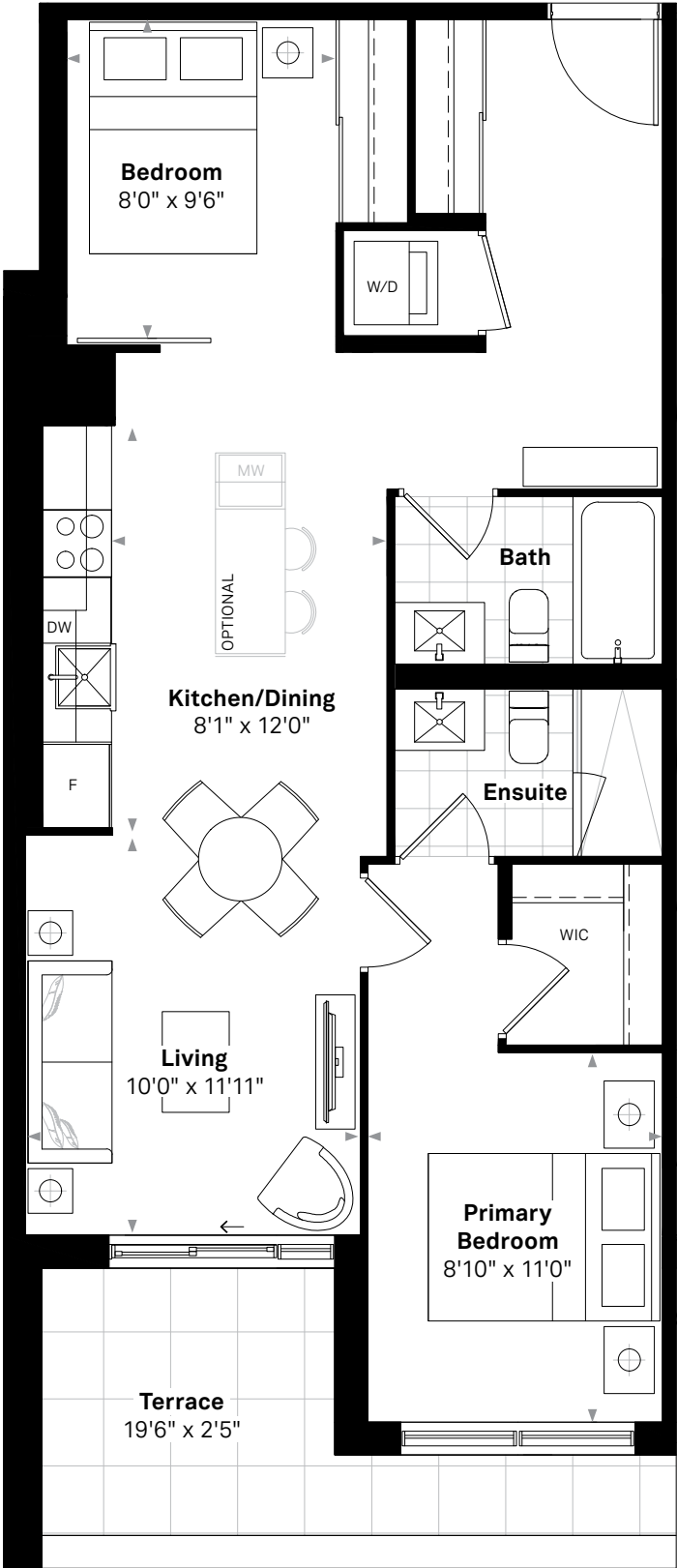
The Georgian

The Reynolds

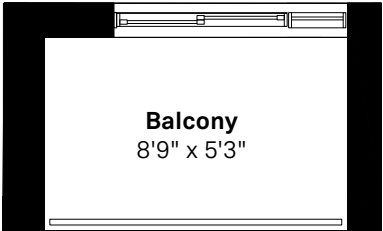
2 BEDROOM, 2 BATH

799 SQ.FT. (INTERIOR) + 96 SQ.FT. (TERRACE), 12 FT. KITCHEN

Suites 220, 320, 420



Suite 220



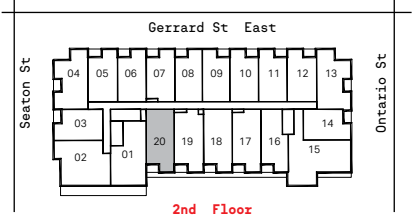
49 SQ.FT. (BALCONY)
Suites 320, 420



4th Floor



3rd Floor



2nd Floor



Floor plan and specifications apply to architectural plan 2B - C. All illustrations are artist's concept. Specifications, layouts and materials are subject to change without notice. All measurements and dimensions are approximate only and not guaranteed to be exact or to scale. Dimensions may vary with actual construction and according to elevation. These floorplans and room dimensions apply to the featured unit of this model type. Window size and location may vary. Tile patterns may vary. Plan may be built as the mirror image. Bulkheads required for mechanical purposes have not been indicated. Outdoor area will vary depending on the suite location within the building. Any reference or depictions, if any, to furniture, appliances, or other related items and equipment are conceptual in nature and not included in the unit unless otherwise provided for in the agreement of purchase and sale. Nothing herein shall be relied upon as a representation or warranty, collateral agreement, or condition, express or implied, of the final plans and specifications for the project, as the final plans and specifications are subject to the final review and approval of any applicable governmental authority, the developer and its consultants and engineers. E. & O.E. January 2022 – Stafford Homes