

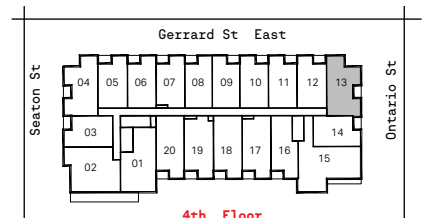
The Georgian

The Edison

2 BEDROOM, 1 BATH

814 SQ.FT. (INTERIOR) + 34 SQ.FT. (BALCONY)

Suite 413



Floor plan and specifications apply to architectural plan 2B - L. All illustrations are artist's concept. Specifications, layouts and materials are subject to change without notice. All measurements and dimensions are approximate only and not guaranteed to be exact or to scale. Dimensions may vary with actual construction and according to elevation. These floorplans and room dimensions apply to the featured unit of this model type. Window size and location may vary. Tile patterns may vary. Plan may be built as the mirror image. Bulkheads required for mechanical purposes have not been indicated. Outdoor area will vary depending on the suite location within the building. Any reference or depictions, if any, to furniture, appliances, or other related items and equipment are conceptual in nature and not included in the unit unless otherwise provided for in the agreement of purchase and sale. Nothing herein shall be relied upon as a representation or warranty, collateral agreement, or condition, express or implied, of the final plans and specifications for the project, as the final plans and specifications are subject to the final review and approval of any applicable governmental authority, the developer and its consultants and engineers. E. & O.E. January 2022 - Stafford Homes

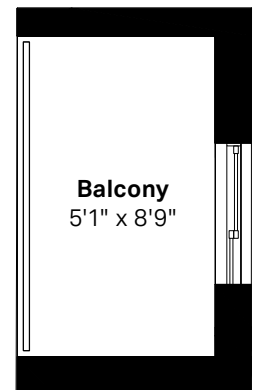
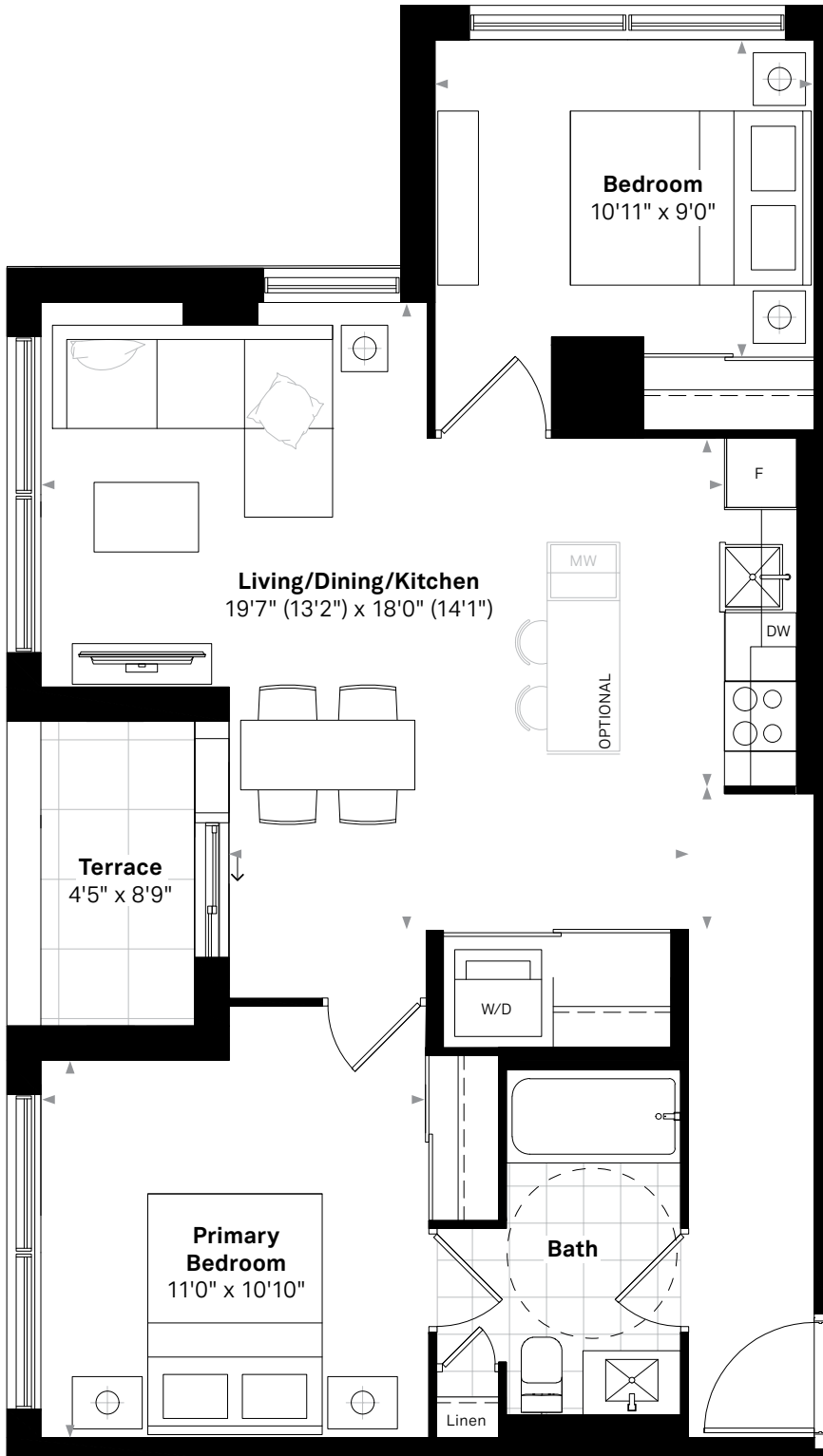
The Georgian

The Flower (BF)

2 BEDROOM, 1 BATH

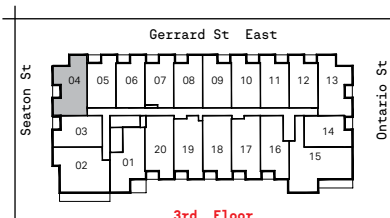
852 SQ.FT. (INTERIOR) + 39 SQ.FT. (TERRACE)

Suites 204, 304

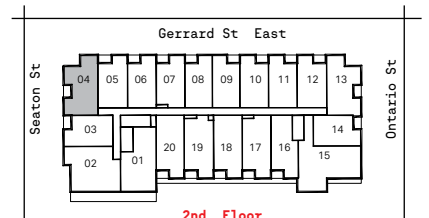


47 SQ.FT. (BALCONY)
Suite 304

Suite 204



3rd Floor



2nd Floor

Floor plan and specifications apply to architectural plan 2B - A - (BF). All illustrations are artist's concept. Specifications, layouts and materials are subject to change without notice. All measurements and dimensions are approximate only and not guaranteed to be exact or to scale. Dimensions may vary with actual construction and according to elevation. These floorplans and room dimensions apply to the featured unit of this model type. Window size and location may vary. Tile patterns may vary. Plan may be built as the mirror image. Bulkheads required for mechanical purposes have not been indicated. Outdoor area will vary depending on the suite location within the building. Any reference or depictions, if any, to furniture, appliances, or other related items and equipment are conceptual in nature and not included in the unit unless otherwise provided for in the agreement of purchase and sale. Nothing herein shall be relied upon as a representation or warranty, collateral agreement, or condition, express or implied, of the final plans and specifications for the project, as the final plans and specifications are subject to the final review and approval of any applicable governmental authority, the developer and its consultants and engineers. E. & O.E. January 2022 - Stafford Homes

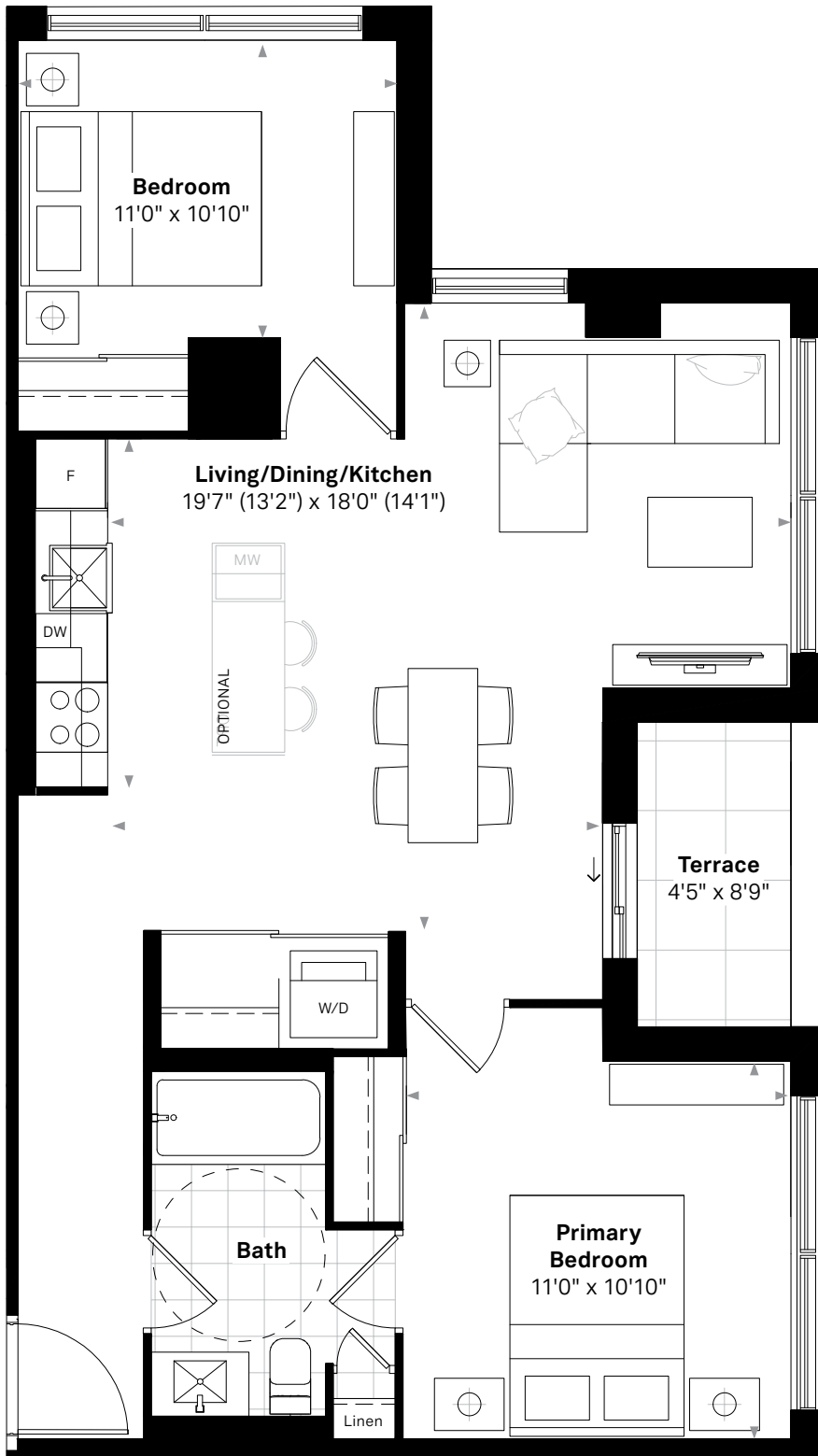
The Georgian

The Foster (BF)

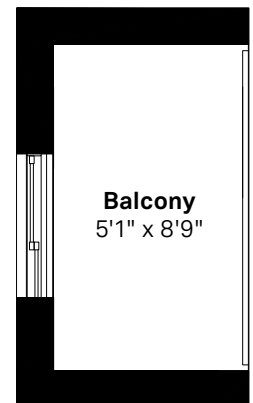
2 BEDROOM, 1 BATH

852 SQ.FT. (INTERIOR) + 39 SQ.FT. (TERRACE)

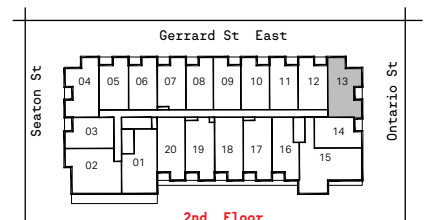
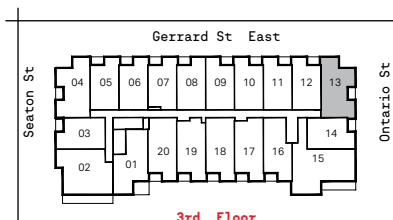
Suites 213, 313



Suite 213



47 SQ.FT. (BALCONY)
Suite 313



Floor plan and specifications apply to architectural plan 2B - B - (BF). All illustrations are artist's concept. Specifications, layouts and materials are subject to change without notice. All measurements and dimensions are approximate only and not guaranteed to be exact or to scale. Dimensions may vary with actual construction and according to elevation. These floorplans and room dimensions apply to the featured unit of this model type. Window size and location may vary. Tile patterns may vary. Plan may be built as the mirror image. Bulkheads required for mechanical purposes have not been indicated. Outdoor area will vary depending on the suite location within the building. Any reference or depictions, if any, to furniture, appliances, or other related items and equipment are conceptual in nature and not included in the unit unless otherwise provided for in the agreement of purchase and sale. Nothing herein shall be relied upon as a representation or warranty, collateral agreement, or condition, express or implied, of the final plans and specifications for the project, as the final plans and specifications are subject to the final review and approval of any applicable governmental authority, the developer and its consultants and engineers. E. & O.E. January 2022 - Stafford Homes

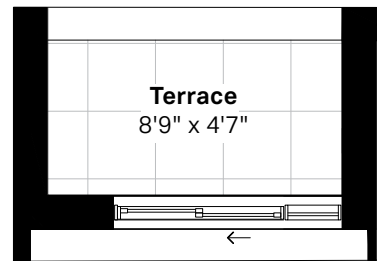
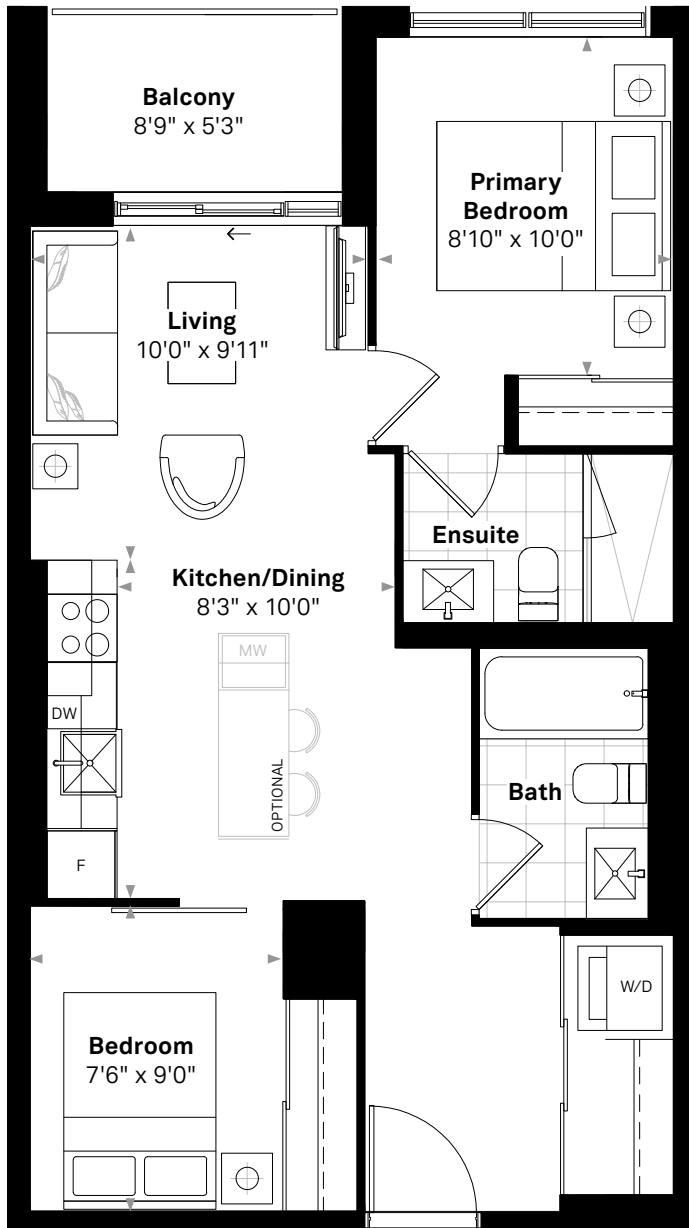
The Georgian

The George

2 BEDROOM, 2 BATH

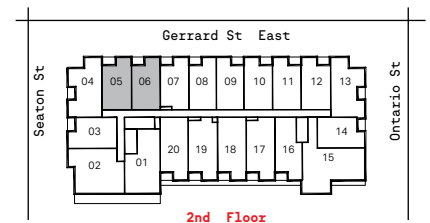
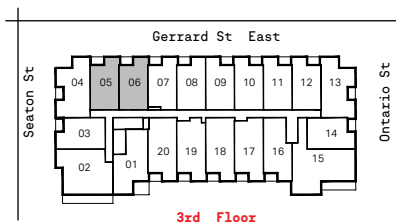
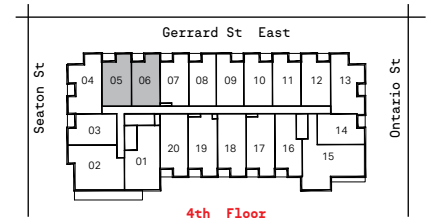
664 SQ.FT. (INTERIOR) + 49 SQ.FT. (BALCONY)

Suites 205, 206, 305, 306, 405, 406



40 SQ.FT. (TERRACE)
Suites 205

Suites 206, 305, 306, 405, 406



Floor plan and specifications apply to architectural plan 2B - W. All illustrations are artist's concept. Specifications, layouts and materials are subject to change without notice. All measurements and dimensions are approximate only and not guaranteed to be exact or to scale. Dimensions may vary with actual construction and according to elevation. These floorplans and room dimensions apply to the featured unit of this model type. Window size and location may vary. Tile patterns may vary. Plan may be built as the mirror image. Bulkheads required for mechanical purposes have not been indicated. Outdoor area will vary depending on the suite location within the building. Any reference or depictions, if any, to furniture, appliances, or other related items and equipment are conceptual in nature and not included in the unit unless otherwise provided for in the agreement of purchase and sale. Nothing herein shall be relied upon as a representation or warranty, collateral agreement, or condition, express or implied, of the final plans and specifications for the project, as the final plans and specifications are subject to the final review and approval of any applicable governmental authority, the developer and its consultants and engineers. E. & O.E. January 2022 - Stafford Homes

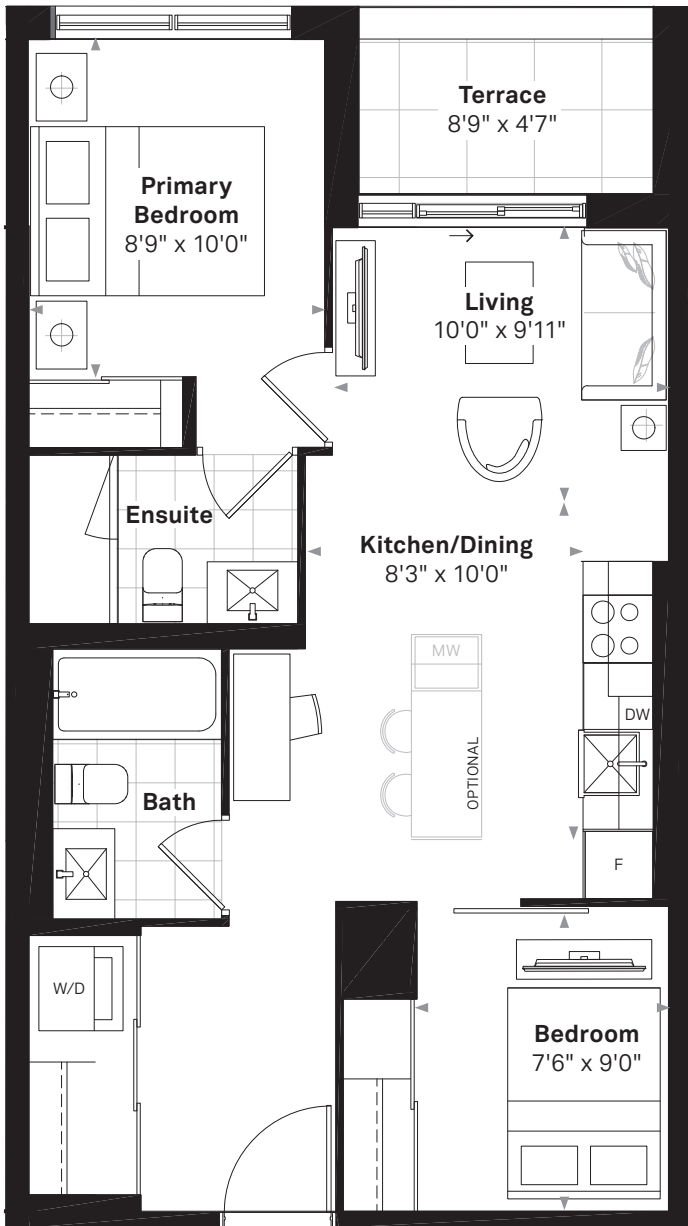
The Georgian

The Carroll

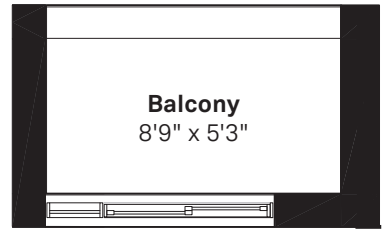
2 BEDROOM, 2 BATH

664 SQ.FT. (INTERIOR) + 49 SQ.FT. (BALCONY)

Suites 210, 211, 212, 310, 311, 312, 410, 411, 412

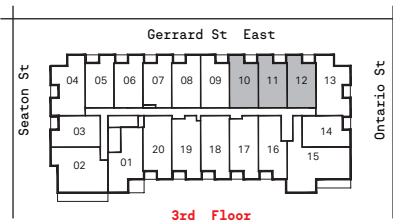


Suites 210, 211



40 SQ.FT. (TERRACE)

Suites 211, 310, 311, 312, 410, 411, 412



Floor plan and specifications apply to architectural plan 2B - X. All illustrations are artist's concept. Specifications, layouts and materials are subject to change without notice. All measurements and dimensions are approximate only and not guaranteed to be exact or to scale. Dimensions may vary with actual construction and according to elevation. These floorplans and room dimensions apply to the featured unit of this model type. Window size and location may vary. Tile patterns may vary. Plan may be built as the mirror image. Bulkheads required for mechanical purposes have not been indicated. Outdoor area will vary depending on the suite location within the building. Any reference or depictions, if any, to furniture, appliances, or other related items and equipment are conceptual in nature and not included in the unit unless otherwise provided for in the agreement of purchase and sale. Nothing herein shall be relied upon as a representation or warranty, collateral agreement, or condition, express or implied, of the final plans and specifications for the project, as the final plans and specifications are subject to the final review and approval of any applicable governmental authority, the developer and its consultants and engineers. E. & O.E. January 2022 - Stafford Homes

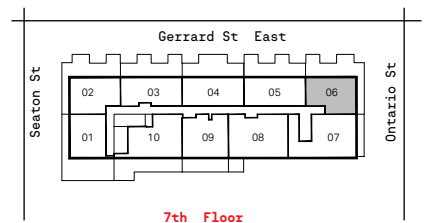
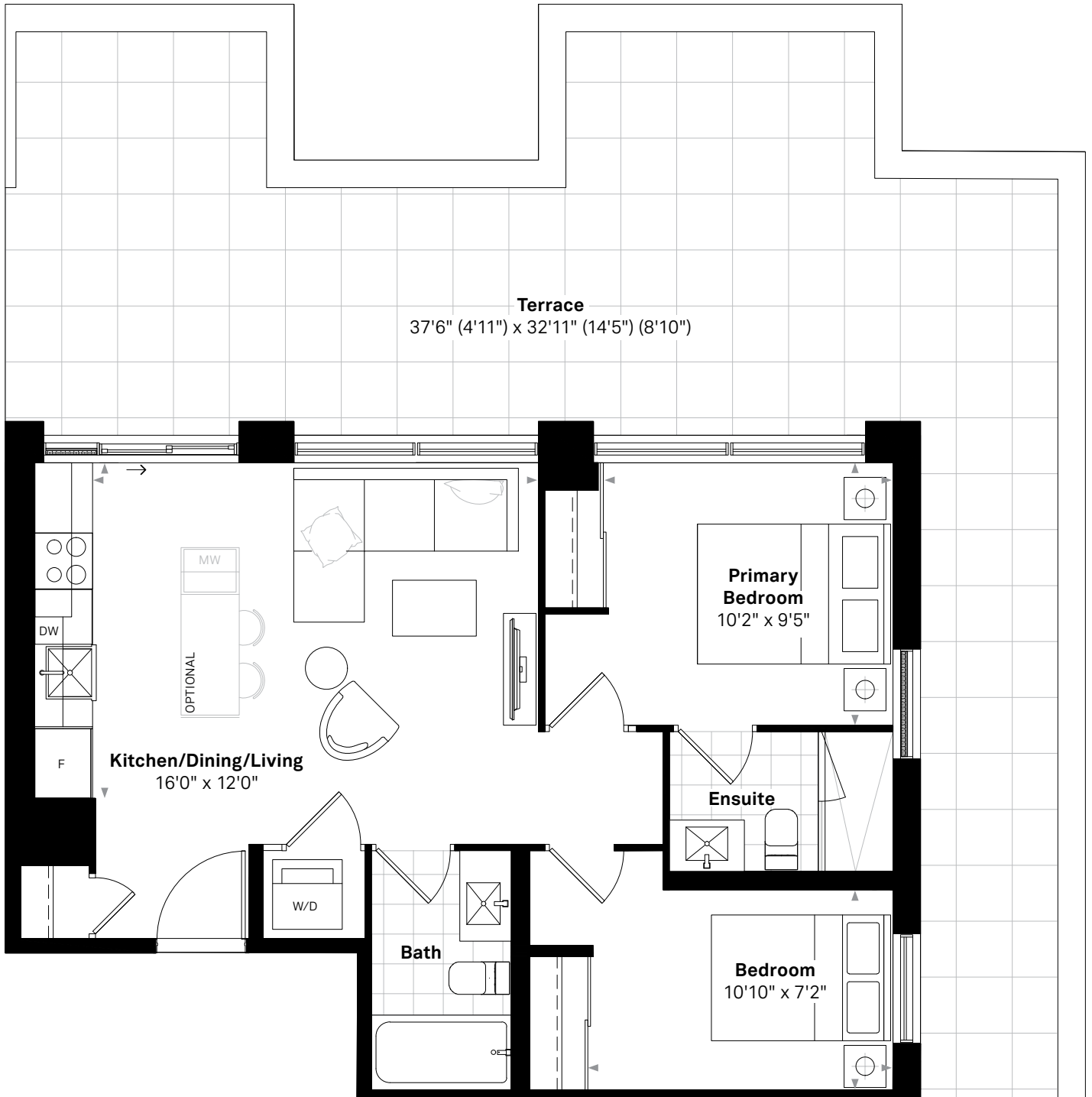
The Georgian

The Gilbert

2 BEDROOM, 2 BATH

708 SQ.FT. (INTERIOR) + 562 SQ.FT. (TERRACE), 12 FT. KITCHEN

Suite 706



Floor plan and specifications apply to architectural plan 2B - 0. All illustrations are artist's concept. Specifications, layouts and materials are subject to change without notice. All measurements and dimensions are approximate only and not guaranteed to be exact or to scale. Dimensions may vary with actual construction and according to elevation. These floorplans and room dimensions apply to the featured unit of this model type. Window size and location may vary. Tile patterns may vary. Plan may be built as the mirror image. Bulkheads required for mechanical purposes have not been indicated. Outdoor area will vary depending on the suite location within the building. Any reference or depictions, if any, to furniture, appliances, or other related items and equipment are conceptual in nature and not included in the unit unless otherwise provided for in the agreement of purchase and sale. Nothing herein shall be relied upon as a representation or warranty, collateral agreement, or condition, express or implied, of the final plans and specifications for the project, as the final plans and specifications are subject to the final review and approval of any applicable governmental authority, the developer and its consultants and engineers. E. & O.E. January 2022 - Stafford Homes

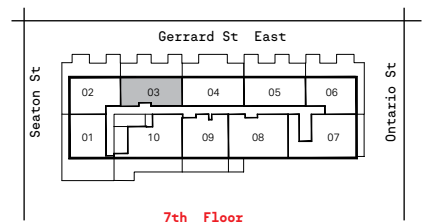
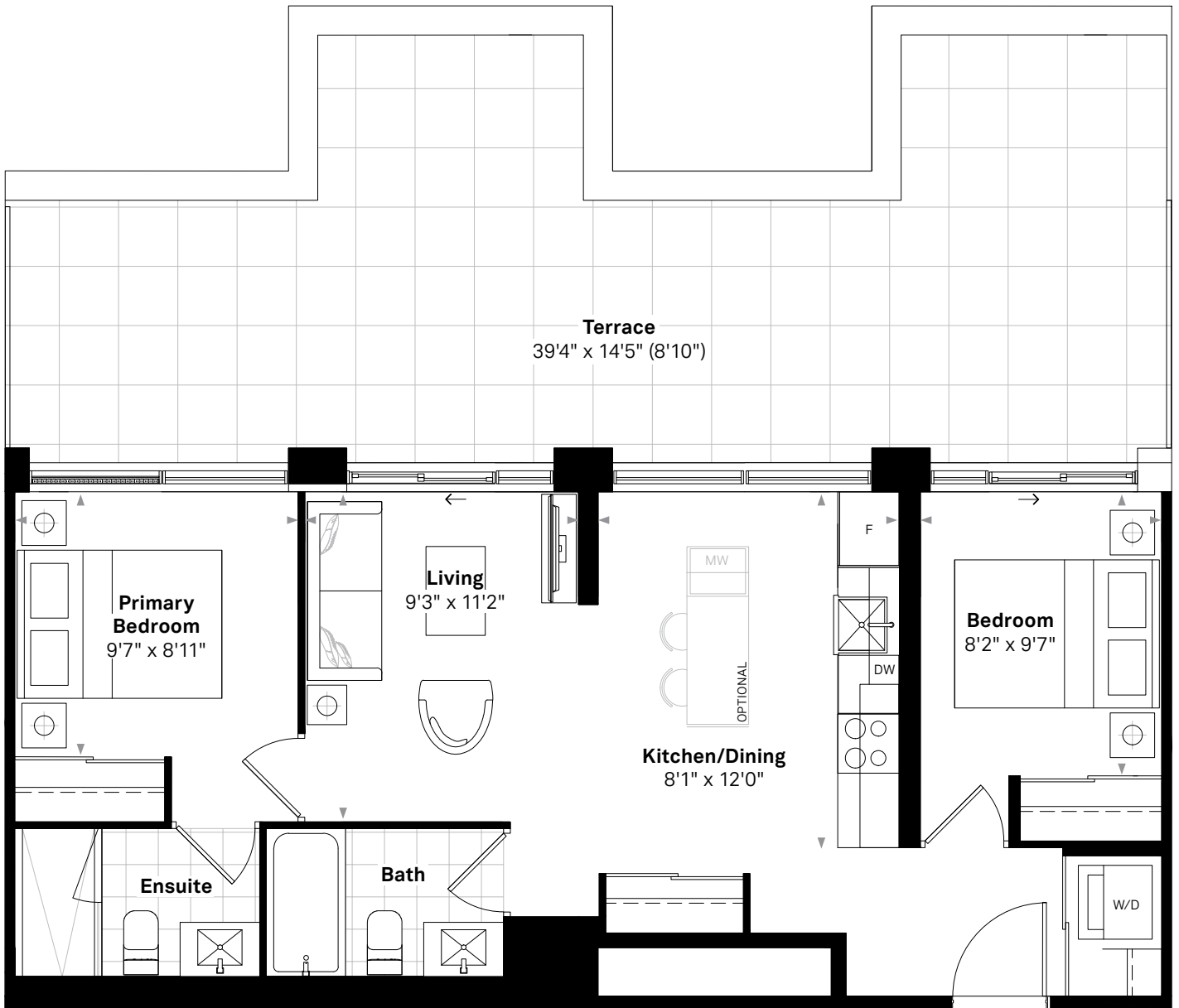
The Georgian

The Hanover

2 BEDROOM, 2 BATH

711 SQ.FT. (INTERIOR) + 449 SQ.FT. (TERRACE), 12 FT. KITCHEN

Suite 703



Floor plan and specifications apply to architectural plan 2B - U. All illustrations are artist's concept. Specifications, layouts and materials are subject to change without notice. All measurements and dimensions are approximate only and not guaranteed to be exact or to scale. Dimensions may vary with actual construction and according to elevation. These floorplans and room dimensions apply to the featured unit of this model type. Window size and location may vary. Tile patterns may vary. Plan may be built as the mirror image. Bulkheads required for mechanical purposes have not been indicated. Outdoor area will vary depending on the suite location within the building. Any reference or depictions, if any, to furniture, appliances, or other related items and equipment are conceptual in nature and not included in the unit unless otherwise provided for in the agreement of purchase and sale. Nothing herein shall be relied upon as a representation or warranty, collateral agreement, or condition, express or implied, of the final plans and specifications for the project, as the final plans and specifications are subject to the final review and approval of any applicable governmental authority, the developer and its consultants and engineers. E. & O.E. January 2022 - Stafford Homes

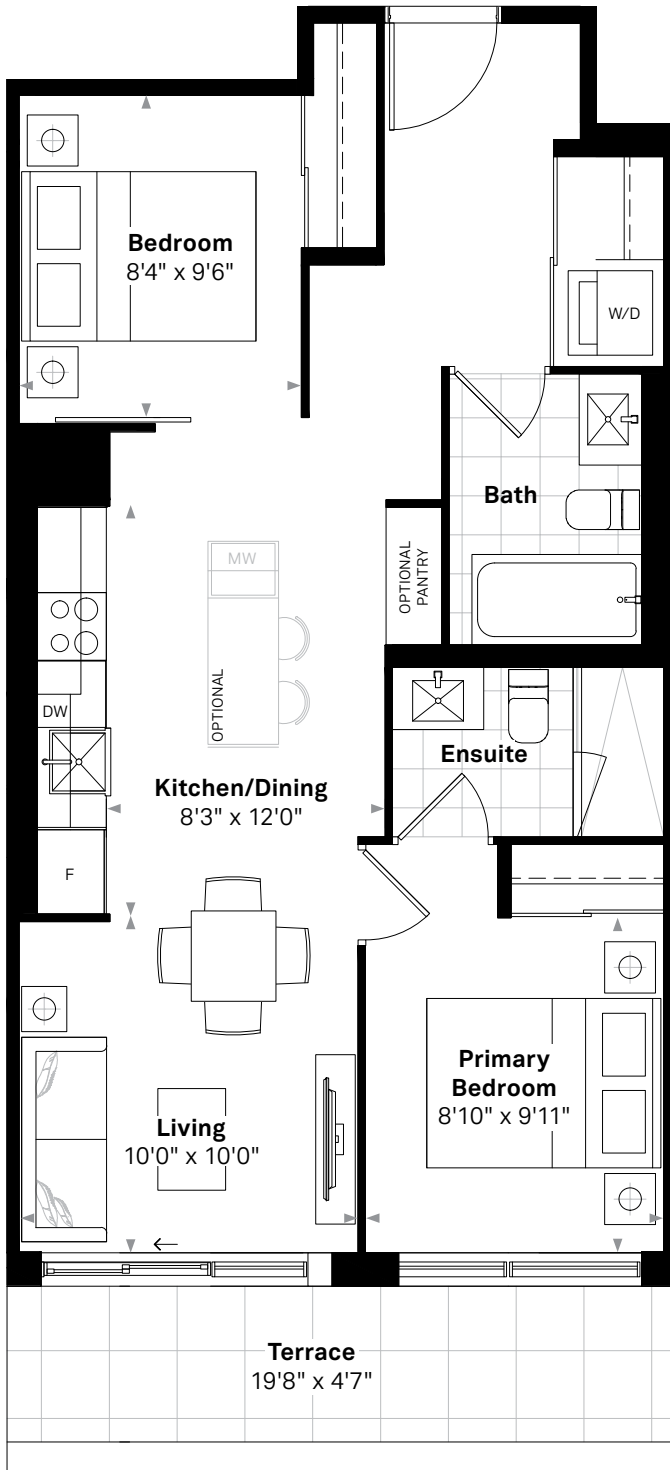
The Georgian

The Hope

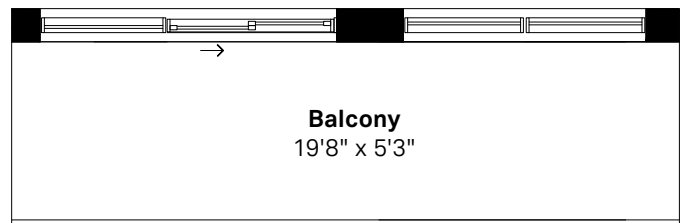
2 BEDROOM, 2 BATH

717 SQ.FT. (INTERIOR) + 90 SQ.FT. (TERRACE), 12 FT. KITCHEN

Suites 518, 617

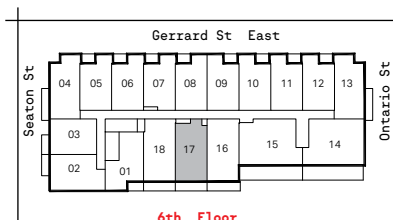


Suite 518

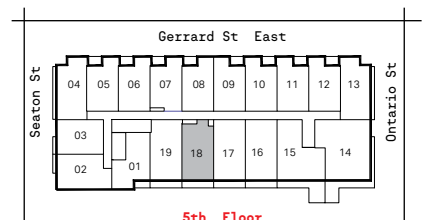


110 SQ.FT. (BALCONY)

Suite 617



6th Floor



5th Floor

Floor plan and specifications apply to architectural plan 2B - Z. All illustrations are artist's concept. Specifications, layouts and materials are subject to change without notice. All measurements and dimensions are approximate only and not guaranteed to be exact or to scale. Dimensions may vary with actual construction and according to elevation. These floorplans and room dimensions apply to the featured unit of this model type. Window size and location may vary. Tile patterns may vary. Plan may be built as the mirror image. Bulkheads required for mechanical purposes have not been indicated. Outdoor area will vary depending on the suite location within the building. Any reference or depictions, if any, to furniture, appliances, or other related items and equipment are conceptual in nature and not included in the unit unless otherwise provided for in the agreement of purchase and sale. Nothing herein shall be relied upon as a representation or warranty, collateral agreement, or condition, express or implied, of the final plans and specifications for the project, as the final plans and specifications are subject to the final review and approval of any applicable governmental authority, the developer and its consultants and engineers. E. & O.E. January 2022 - Stafford Homes

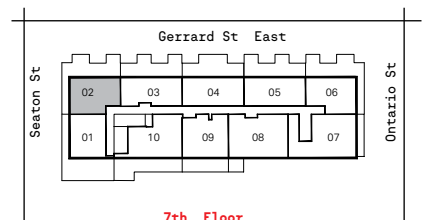
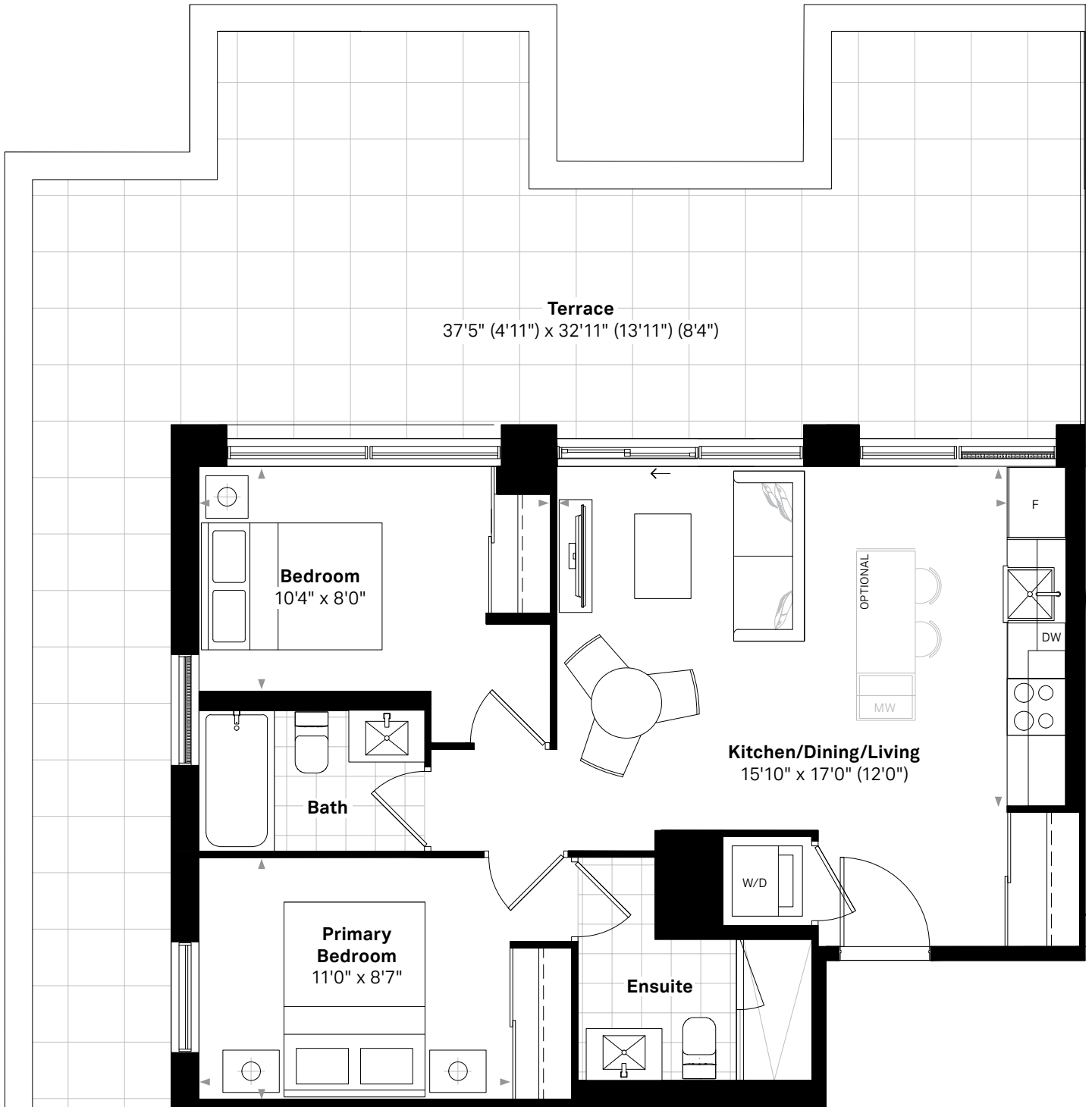
The Georgian

The Hopkins

2 BEDROOM, 2 BATH

724 SQ.FT. (INTERIOR) + 562 SQ.FT. (TERRACE), 12 FT. KITCHEN

Suite 702



Floor plan and specifications apply to architectural plan 2B - T. All illustrations are artist's concept. Specifications, layouts and materials are subject to change without notice. All measurements and dimensions are approximate only and not guaranteed to be exact or to scale. Dimensions may vary with actual construction and according to elevation. These floorplans and room dimensions apply to the featured unit of this model type. Window size and location may vary. Tile patterns may vary. Plan may be built as the mirror image. Bulkheads required for mechanical purposes have not been indicated. Outdoor area will vary depending on the suite location within the building. Any reference or depictions, if any, to furniture, appliances, or other related items and equipment are conceptual in nature and not included in the unit unless otherwise provided for in the agreement of purchase and sale. Nothing herein shall be relied upon as a representation or warranty, collateral agreement, or condition, express or implied, of the final plans and specifications for the project, as the final plans and specifications are subject to the final review and approval of any applicable governmental authority, the developer and its consultants and engineers. E. & O.E. January 2022 - Stafford Homes

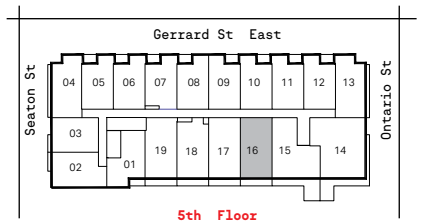
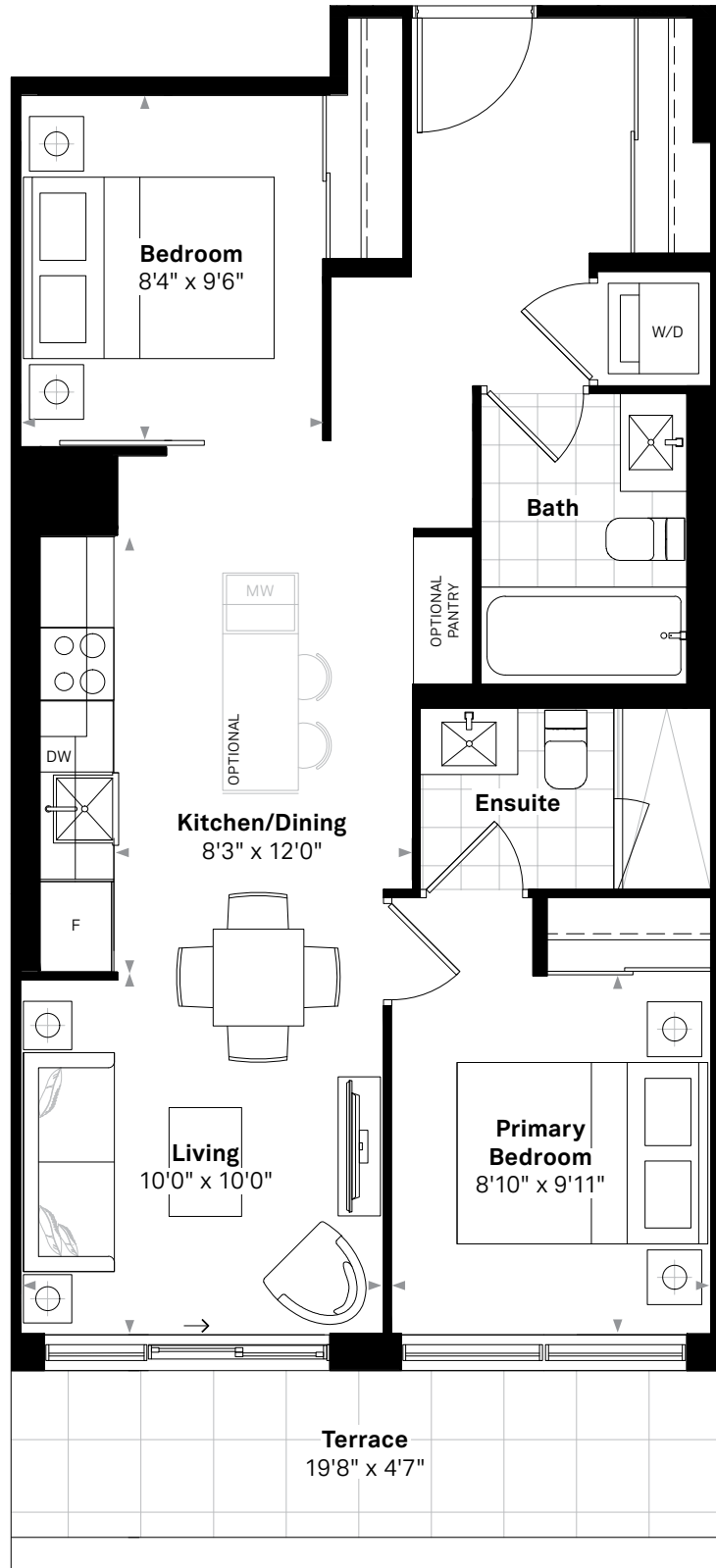
The Georgian

The Lovelace

2 BEDROOM, 2 BATH

726 SQ.FT. (INTERIOR) + 90 SQ.FT. (TERRACE), 12 FT. KITCHEN

Suite 516



Floor plan and specifications apply to architectural plan 2B - ZB. All illustrations are artist's concept. Specifications, layouts and materials are subject to change without notice. All measurements and dimensions are approximate only and not guaranteed to be exact or to scale. Dimensions may vary with actual construction and according to elevation. These floorplans and room dimensions apply to the featured unit of this model type. Window size and location may vary. Tile patterns may vary. Plan may be built as the mirror image. Bulkheads required for mechanical purposes have not been indicated. Outdoor area will vary depending on the suite location within the building. Any reference or depictions, if any, to furniture, appliances, or other related items and equipment are conceptual in nature and not included in the unit unless otherwise provided for in the agreement of purchase and sale. Nothing herein shall be relied upon as a representation or warranty, collateral agreement, or condition, express or implied, of the final plans and specifications for the project, as the final plans and specifications are subject to the final review and approval of any applicable governmental authority, the developer and its consultants and engineers. E. & O.E. January 2022 - Stafford Homes