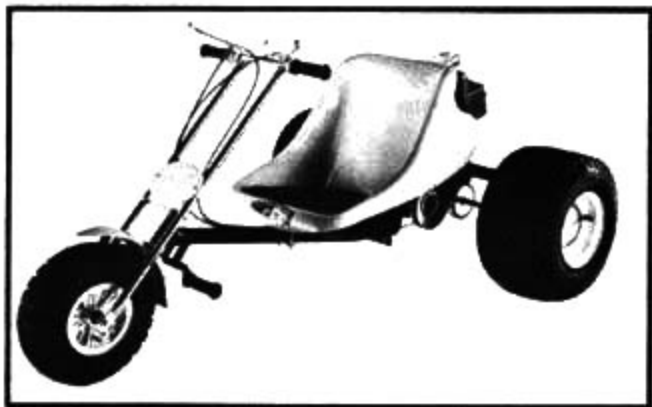


A.P.E.

DUNECYCLE™

FLAT TRACKER



OWNERS MANUAL

- **ASSEMBLY INSTRUCTIONS**
- **OPERATING INSTRUCTIONS**
 - **MAINTENANCE INSTRUCTIONS**
 - **REPAIR PARTS LIST**

MFG. BY APE PRODUCTS

DIV. of ALLIED PACIFIC MFG.

**13727 EXCELSIOR DRIVE
SANTA FE SPRINGS CA. 90670**

A MEMBER OF TOWER INDUSTRIES INC.

Important Safety Instructions

This vehicle is designed and built for recreational sports and is not intended for street use. As a recreational vehicle it is important that both vehicle performance and the terrain be approached with respect until the handling characteristics under all conditions are completely familiar to the driver. As with any performance machine periodic inspections should be made of all critical points and fastenings to insure safety and satisfaction.

1. All operators should be of sufficient age, capability, and understanding to properly operate this vehicle.

2. This vehicle is designed to be operated by one person only.

3. Any minor that operates this vehicle should first have proper instructions and close adult supervision.

4. The operator of this vehicle should never place his hands, feet or any part of his body near any moving parts.

5. The governor on this vehicle protects the engine and the operator from excessive speeds. It must not be altered, changed or tampered with. The guarantee on the engine is voided if the governor is changed or tampered with.

6. Do not fill the gas tank while the engine is running or when the engine is hot. Gasoline is highly flammable and must be handled with care.

7. Prior to each engine start check to see that the throttle is in idle position and check the engine cut off switch.

8. When cornering, lean hard to inside of turn. When climbing hills lean forward.

9. Do not use right brake on left turns, and left brake on right turns.

10. If unit is going to stall on a hill, turn around prior to stalling. If unit stalls on a hill turn sharply as brakes are energizing type and may not hold in reverse.

11. Brakes may become inoperative if wet, glazed, oily, overpowered, or otherwise mistreated.

12. Do not drop feet down while this vehicle is moving.

13. The operator should wear an approved protective helmet at all times.

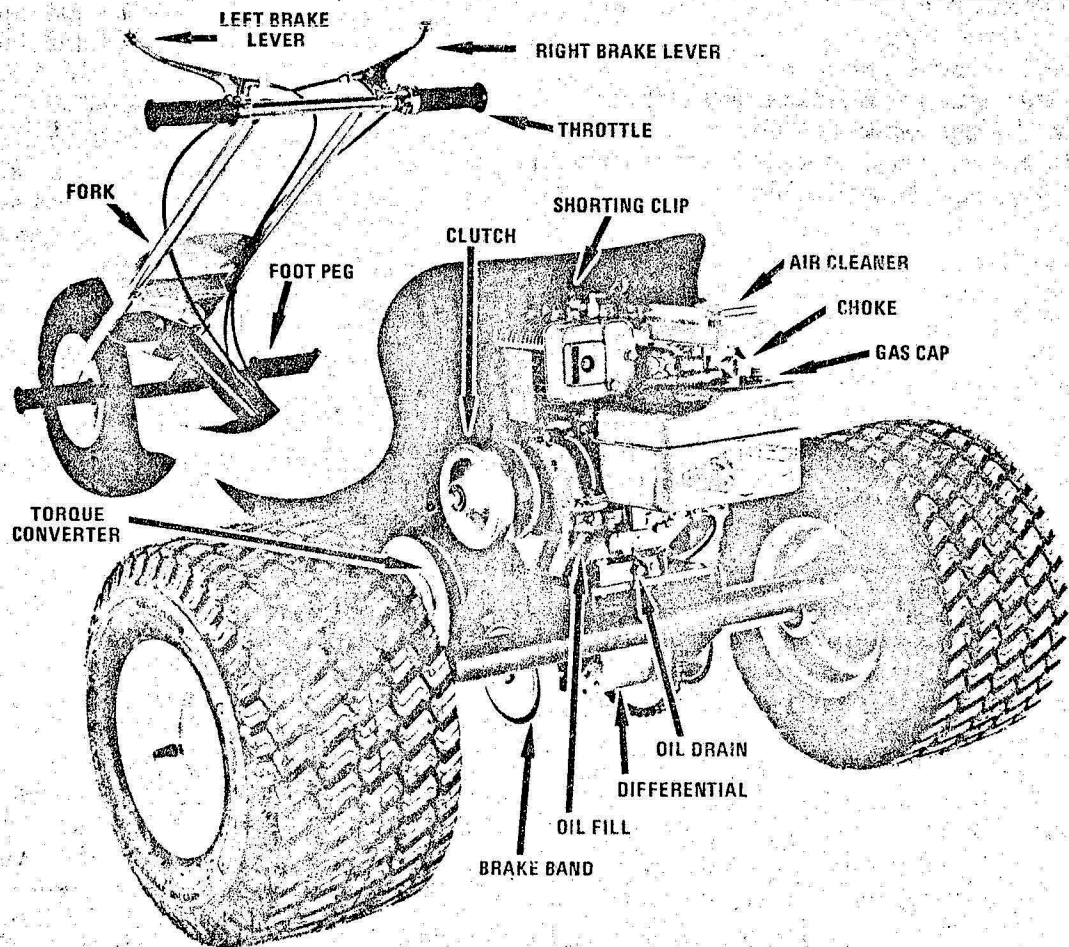
WARRANTY

We warrant our products to be free from defects in workmanship and material. Our liability under this warranty is limited to the repair or replacement free of charge, except any transportation charges involved, of any part that our inspection shows to be defective, provided the defective part is returned to us within 60 days of the original

purchase. The foregoing warranty is given in place of all other expressed or implied warranties of any kind, including warranties of merchantability or fitness for a particular purpose. There is no warranty of any kind if the vehicle is used for racing or rental purposes.

Assembly Instructions

1. Assemble the front fork first. Place the spacer in the gooseneck bearings and position the fork. Install the $\frac{1}{2} \times 5$ bolt with the flat washer under the head of the bolt and the lock washer above the nut. Secure the nut tight with standard length wrenches.
2. Position the brake levers on as far as they will go and tighten the two screws. Be sure the right hand brake is on the right side when the operator is seated in the vehicle. Run the brake cables between the upright fork tubes. Check the brake adjustment.
3. Position the throttle twist grip on the right handle bar and tighten the two screws. Rotate twist grip counterclockwise to check spring return and positive stop in idle position.
4. Install rear tires with the valve stem on the outside. Check tire pressure. The proper pressure for the rear tires is 2 to 4 lbs. The tires should feel soft and should never to over inflated. The proper pressure for the front tire is 6 lbs.
5. Fill the engine with oil.
SEE THE ENGINE INSTRUCTIONS.
It is advisable to always use the same grade of oil as originally used. Do not spill oil on the brakes. It is advisable to cover the brakes with a rag when filling or draining the oil.
6. Fill the gasoline tank with standard gasoline. DO NOT USE ETHYL.
7. Install the belt AFTER reading the operating instructions. The belt has been left off so the engine can be started and adjusted. To install the belt, loop around the clutch first, then start the belt at the top side of the torque converter, rotate the torque converter counterclockwise and push vehicle forward until belt is on.



Operating Controls

WARNING: Read all of the operating instructions before attempting to start or operate this engine. Do not start the engine until you are completely familiar with the location and use of all the controls. Check the throttle control prior to each use to be sure it is working properly.

1. This vehicle is equipped with left and right hand brakes that are individually controlled. The brakes are used to stop the unit and also to help maneuver. The right hand lever controls the right hand brake and the left hand lever controls the left hand brake. By applying pressure to the brake lever, the brake band is tightened over the brake drum. This slows or stops the vehicle. To slow or stop the unit apply pressure to both right and left hand levers. To assist in maneuvering the unit use the left hand lever to help turn left and the right hand lever to turn right. The brakes are adjusted by turning the knurled screw at the end of the brake lever. Loosen the knurled nut, adjust the brakes and then tighten the knurled nut. Do not spill oil on the brakes. The brakes may become inoperative if oily, wet, glazed or overpowered.
2. The clutch is an automatic centrifugal type that is mounted directly on the engine. The clutch does not engage while the engine is idling. As soon as the engine is speeded up the clutch gradually engages and the vehicle moves forward.
3. The throttle is controlled by the twist grip on the right hand side of the handle bar. By twisting the throttle the engine speed is increased or decreased. As the engine speed is increased slightly the vehicle moves forward. The clutch is disengaged at any time by allowing the throttle to return to idle position. The throttle along with the brakes control the vehicle and they should be checked prior to each start.

4. The engine "on and off" switch can be used at anytime to stop the engine by turning the switch to OFF. The engine can also be stopped with the "shorting clip" adjacent to the spark plug. To stop the engine hold the shorting clip against the spark plug. Do not release until the engine has remained stopped for 10 seconds.
5. This vehicle is driven by an automatic variable speed torque converter system. This system has a definite advantage to engine life and versatility. It operates in a manner similar to an automobile automatic transmission. The unit consists of three parts, the clutch on the engine, the torque converter on the jackshaft and the belt. It works by changing the diameter of the pulley where the belt is making contact. The ratio of engine speed to rear wheel speed is 16 to 1 in the low range and 6.8 to 1 in the high range.

When the engine speed is increased the automatic clutch tightens the belt, the system is engaged and the vehicle moves forward. The system starts out in the low range and automatically shifts to the high range as speed increases. When the vehicle is driven up a hill the torque converter system automatically shifts down to the low range for climbing ability. When level ground is reached the system automatically shifts to high as speed is increased.

6. This vehicle is equipped with an automotive type differential. The differential allows the two rear wheels to turn at different speeds. Cornering is made easier and separate control of each rear wheel is possible by using the left hand or right hand brake.

Operating Instructions

Read the ENGINE OWNERS MANUAL before starting the engine.

1. Before starting engine be sure the throttle is in idle position. Then put the engine "on-off" switch to the on position.
2. To start the engine, move the choke lever to "choke" position if engine is cold. A warm

engine may be restarted without choking. Do not overchoke the engine. Continued pulling of the starter rope with the choke lever in choke position will flood the engine. If the engine does not start after two or three pulls, place the choke lever in the "off" position and pull starter rope several times to clear engine of excess fuel. After engine starts, move choke control to off position.

Continued on Page 5

Operating Instructions

(Continued)

3. Place the front tire against an immovable object and position yourself at the rear of the unit. Grasp the recoil starter handle and pull sharply. Do not allow the starter rope to snap back. An engine that fails to start promptly is an indication of some malfunction or an error in starting. Check your engine "Owners Manual".
4. After starting your engine, operate this vehicle first in a large open area. Practice slow starts and stops. Until you have become familiar with the vehicle, continue to go slowly. Avoid high speed, sharp turns, steep hills and rough terrain.
5. Do not use right brake on left turns or left brake on right turns when running at higher speeds. When cornering, lean hard to the inside of turn. When climbing hills lean forward. Do not make jumps. Do not drag feet while moving.
6. If unit is going to stall on a steep hill, turn around prior to stalling. The brakes are energizing type and may not hold as well in reverse. The brakes, like all band brakes, may become inoperative if oily, wet, glazed or overheated.

READ SAFETY INSTRUCTIONS

Maintenance Instructions

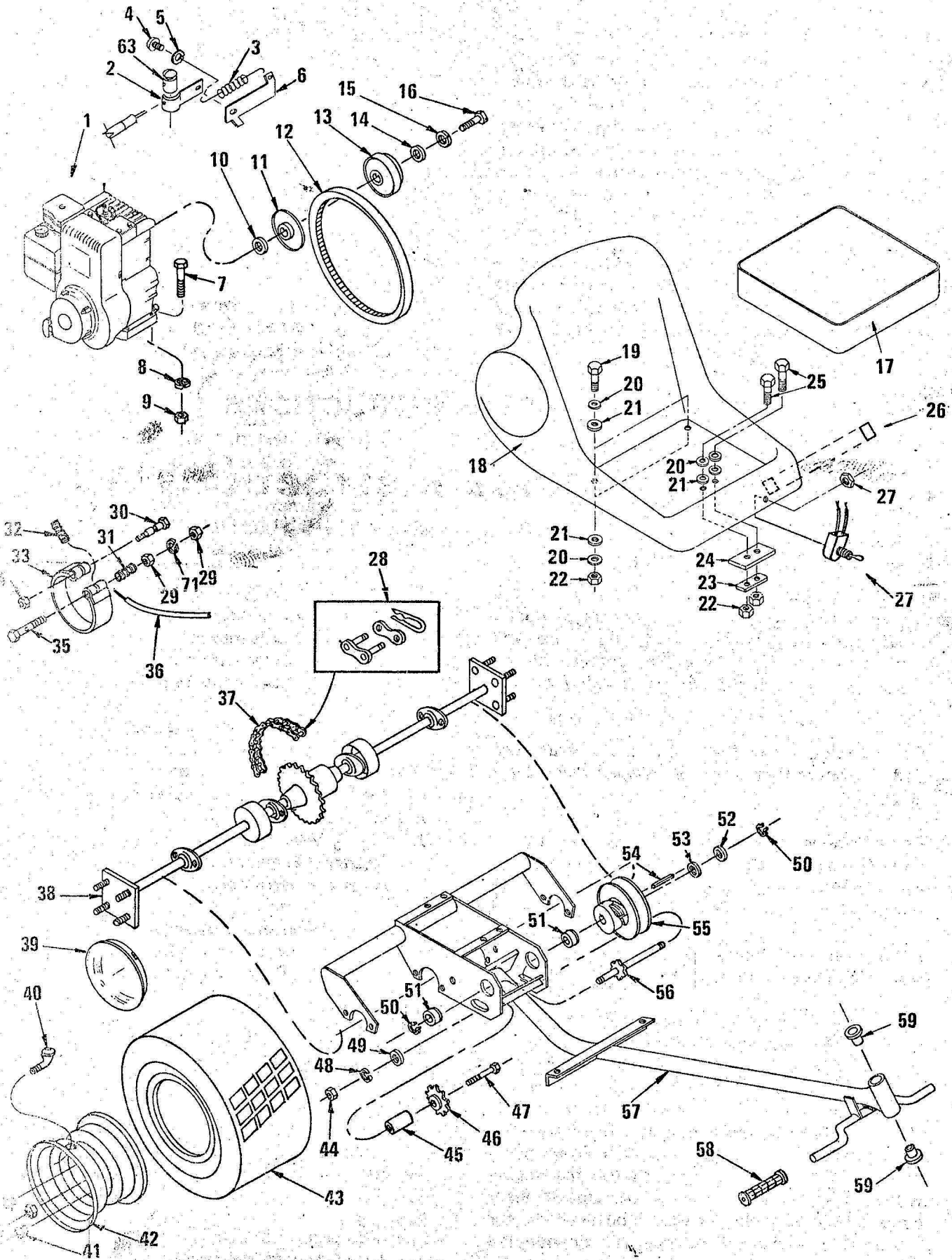
Detailed instruction for use and maintenance of the engine are given in the engine "Owners Manual". Read carefully. Remove the spark plug wire and position wire where it cannot make contact with the spark plug when changing oil or working on the vehicle.

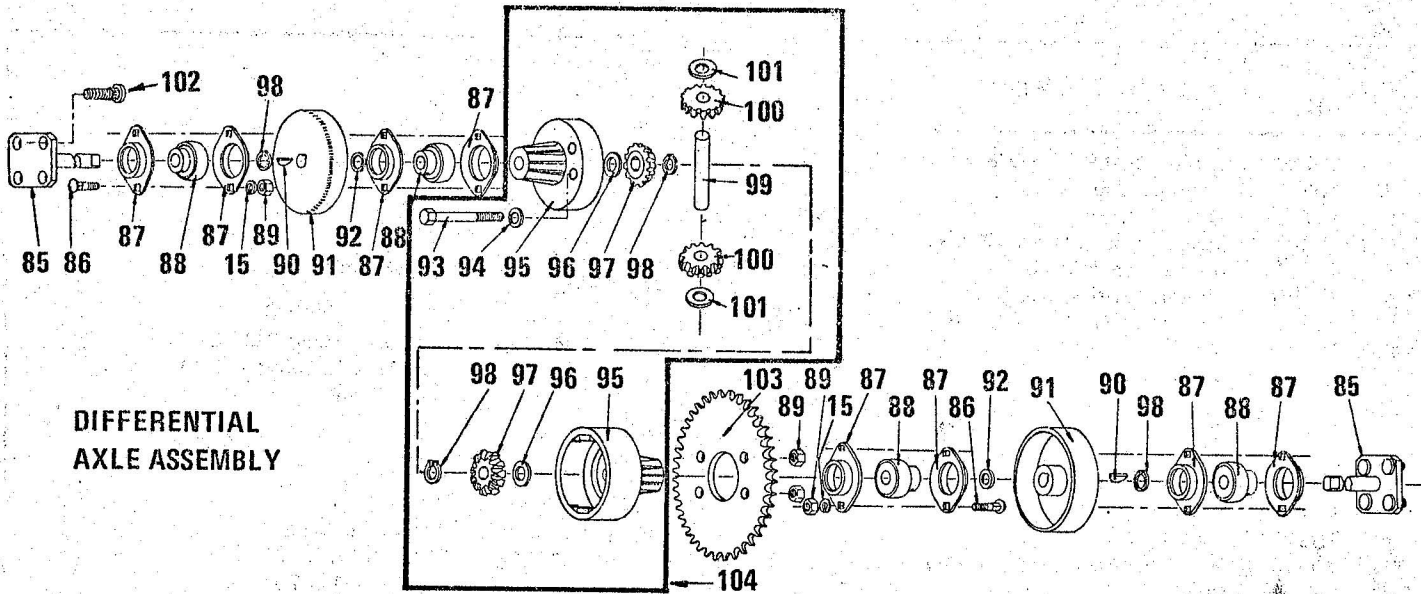
1. Change the oil after the first 2 hours of use and each 25 hours thereafter. See engine manual for all details.
2. Periodically lubricate the fork assembly by removing the $\frac{1}{2}$ x 5 bolt and the spacer. Clean the spacer and bushings and put a few drops on each bushing.
3. After every 40 hours of use the clutch and torque converter should have a few drops of oil.
4. Adjust the chain after 2 hours of use. Loosen the idler sprocket nut and slide the idler sprocket to the rear. Tighten idler bolt securely. Allow about $\frac{3}{8}$ " flex for proper adjustment. Oil chain often.
5. You must service the air cleaner regularly. The air cleaner prevents dirt and dust from being drawn into the engine. Do not run the engine without the air cleaner in place. Under dusty conditions the air cleaner should be cleaned after 5 hours. See the engine manual for detailed instructions.
6. The rear tires are a very important part of this vehicle since it does not have spring suspension. The unit should never be used with over inflated tires. The correct tire pressure is 2 to 4 pounds in the rear and 6 pounds in the front.

Small leaks may be prevented by the use of a good self sealing compound. Punctures, if not unusually severe can be plugged with plug kits available at your tire dealer.
7. The governor on the engine is preset at the factory and must not be tampered with. To do so voids the warrantee.
8. Any vehicle that is used in dust and dirt must be cleaned and serviced often. Your vehicle is no exception. Check all nuts and bolts frequently. Clean all moving parts.
9. Do not fill or drain fuel while the engine is still hot or running. Move the vehicle outside before draining fuel. Drain all fuel from tank and carburetor before storing for 30 days or more. Do not use stale or old gasoline. Do not use ethyl gasoline.

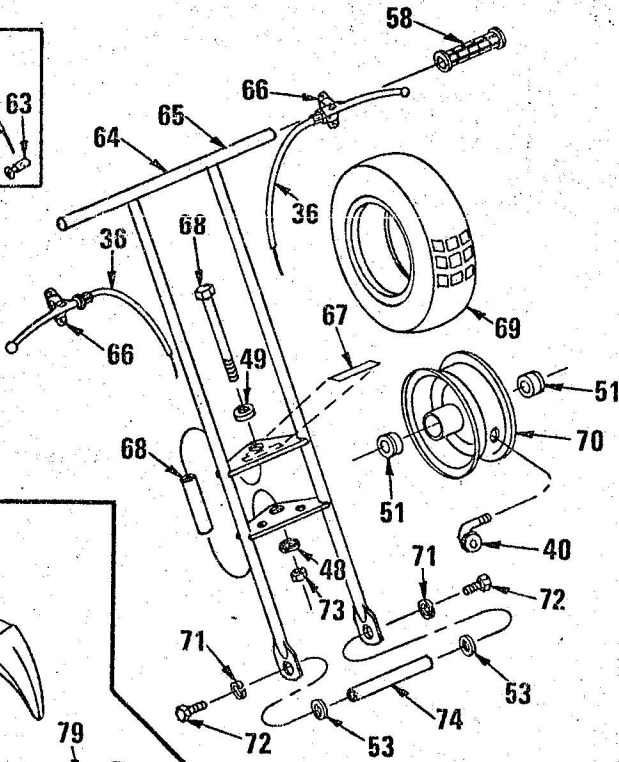
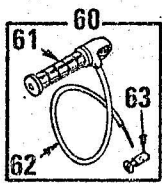
READ YOUR ENGINE OWNERS MANUAL

Repair Parts

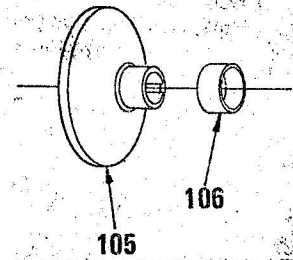




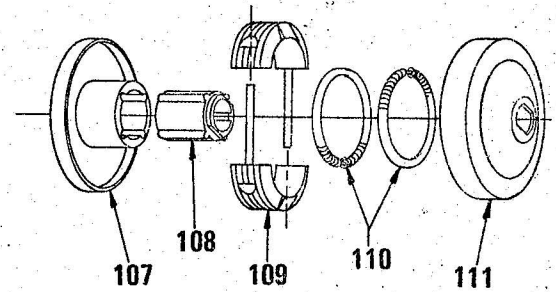
**DIFFERENTIAL
AXLE ASSEMBLY**



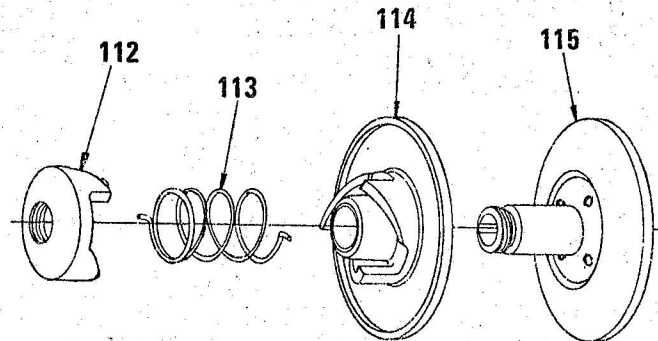
**FLAT TRACKER
S MODEL ONLY**



**STATIONARY CLUTCH SHEAVE
ASSEMBLY REF. NO.11**



**MOVABLE CLUTCH SHEAVE
ASSEMBLY REF. NO.13**



**TORQUE SENSING SHEAVE
ASSEMBLY REF. NO. 55**

Parts List

Ref. No.	Part No.	Name
1	10200	Engine, 5 H.P. Briggs & Stratton
2	10218	Throttle Cable Clip
3	10216	Throttle Spring
4	10346	Screw, Round Head 10-32x3/8
5	10341	Washer, Lock # 10
6	10219	Throttle Spring Bracket
7	10313	Bolt, Hex Head 5/16-18x1 1/2
8	10317	Washer, Lock 5/16
9	10315	Nut, Hex 5/16-18
10	10217	Washer, Flat 3/4x1 1/16x1/16
11	10211	Clutch Sheave Assembly, Stationary
12	10233	Belt
13	10212	Clutch Sheave Assembly, Movable
14	10316	Washer, Flat 5/16x7/8x1/8
15	10317	Washer, Lock 5/16
16	10314	Bolt, Hex Head 5/16-24x1 1/4
17	10255	Cushion
18	10237	Body
19	10300	Bolt, Hex Head 1/4-20x1 1/4
20	10304	Washer, Flat 1/4x1x1/16
21	10250	Washer, Rubber 1/4x1 1/8x1/8
22	10302	Nut, Hex Locking 1/4-20
23	13008	Strap
24	13007	Pad, Rubber
25	10308	Bolt, Hex Head 1/4-20x3
26	10273	Decal, On-Off
27	10251	Switch
28	10122	Master Link
29	10322	Nut, Hex 3/8-16
30	13030	Brake Pin Assembly
31	10229	Spring
32	10221	Spring
33	10220	Brake Band
34	10305	Nut, Hex 1/4-20
35	10321	Bolt, Hex Head 3/8-16x2 1/2 Special
36	10230	Brake Cable
37	10121	Chain, # 40 (53 Pitches)
38	10074	Differential-Axle Assembly
* 39	10075	Hub Cap
40	10274	Valve Stem
41	10344	Lug Nut, 7/16-20 Special
42	10264	Wheel, Rear
43	10401	Tire, Rear 18x9.50x8
44	10331	Nut, Hex 1/2-13
45	10127	Spacer
46	10125	Idler Sprocket
47	10334	Bolt, Hex Head 1/2-13x3
48	10333	Washer, Lock 1/2
49	10332	Washer, Flat 1/2
50	10129	Snap Ring 5/8 Heavy Duty
51	10118	Bearing, with Snap Ring
52	10347	Washer, Flat 5/8x1 3/16x1/16
53	10012	Washer, Rubber 5/8x7/8x1/8
54	10120	Key, 3/16x3/16x1 3/4
55	10117	Torque Sensing Sheave Assembly
56	10115	Jack Shaft Assembly
57	10100	Frame
58	10270	Grip
59	10112	Bushing
60	10015	Throttle Control Assembly Package
61	15012	Throttle Twist Grip
62	10214	Throttle Control Cable
63	10215	Cable Stop
64	10004	Fork, Painted

Ref. No.	Part No.	Name
* 65	10000	Fork, Chrome Plated
66	10013	Brake Lever
67	10016	Decal, Off Road
68	10330	Bolt, Hx. Hd. Hi Strength 1/2-13x5
69	10017	Tire, Front 14x6
70	10018	Wheel, Front
71	10323	Washer, Lock 3/8
72	10320	Bolt, Hex Head 3/8-16x3/4
73	10335	Nut, Hex Locking 1/2 - 13
74	10009	Axle, Front
* 75	10010	Spacer
* 76	10006	Front Wheel Set
* 77	10310	Bolt, Hex Head 5/16-18x1 1/4
* 78	10011	Bearing
* 79	10008	Tube, Front Tire
* 80	10007	Tire 5.30/4.50-6
* 81	10305	Nut, Hex 1/4-20
* 82	10306	Washer, Lock 1/4
* 83	10020	Fender
* 84	10307	Screw, Pan Head Phillips 1/4-20x3/4
85	10064	Axle, Rear
86	10312	Bolt, Carriage 5/16-18x3/4
87	10067	Flange
88	10066	Bearing
89	10315	Nut, Hex 5/16-18
90	10072	Key Woodruff
91	10070	Brake Drum
92	10065	Washer, Rubber 3/4x1 1/8x3/32
93	10311	Bolt, Hx. Hd. Hi Strength 5/16-18x3 3/4
94	10318	Washer, Flat 5/16x11/16x1/16
95	10054	Housing Set (2 Pieces)
96	10058	Washer, Special
97	10059	Gear, Bevel
98	10071	Snap Ring, 3/4 Heavy Duty
99	10057	Pin
100	10056	Gear, Pinion
101	10060	Washer, Special
102	10345	Wheel Bolt 7/16-20 Special
103	10063	Sprocket, # 41 40 Tooth
104	10053	Differential (Inc. Ref. # 93, 94, 95, 96, 97, 98, 99, 100, 101,)
105	15017	Sheave, Stationary
106	15018	Bearing, Bronze
107	15019	Sheave, Movable
108	15020	Driver
109	15021	Weight
110	15022	Spring
111	15023	Cover
112	15024	Cam Block
113	15025	Spring
114	15026	Sheave with Cam
115	15027	Sheave with Hub
* 116	10021	Air Cleaner Cover, Chromed
* 117	10022	Gas Tank Cap, Chromed