

PHASE III RACER

Alsport's custom 290 or 340cc Racer of limited production. A mid-engine "springer" performing with incredible acceleration. Standard with Racing Roll Bar, Expansion Chambers, Twin Carburetors, Dual Hydraulic Disc Brakes, and Seat Pad. Light is optional.

RTS 340

RTS 340—The big stock TRI-SPORT machine. Powered by a 340cc Kohler high-performance engine delivering 28 HP. Same mid-engine placement provides the most efficient power transmission—source to wheels.

Dual Hydraulic Disc Brakes and Seat Pad are standard. Cargo Rack/Head Rest optional.

STREET LEGAL*

RTS SL*...IT HAD TO HAPPEN! A Street Legal* TRI-SPORT vehicle. Take a stock 290 or 340cc RTS and add: Engine Cowling and Fenders, Front/Rear Light Kit with Speedometer, Tach, Horn, Cargo Rack/Head Rest, Electric Start, Spoked Front Wheel with brake, and hub caps. The most exciting road vehicle ever—and economical. To school; to work; to the golf course. TRI-SPORT SL* for '74.



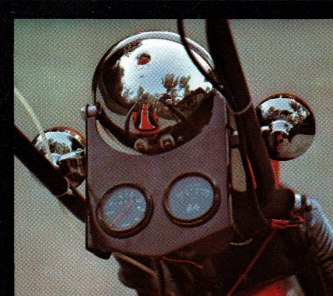
PHASE III RACER

RTS 340

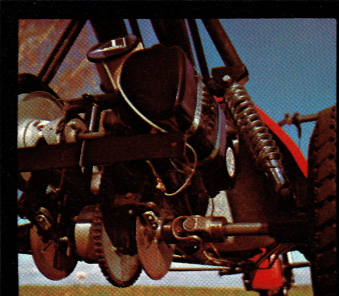
STREET LEGAL*



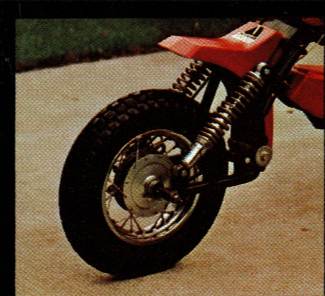
Optional Free-Flow Engine Cowling and Fenders...a part of Alsport's RTS SL* excitement this year. Also shows optional lighting.



Front light with Speedometer and Tach clustered in an attractive, viewable, mounting for the SL*.



Dual Hydraulic Disc Brakes are standard equipment on all 290 and 340cc RTS machines and Phase III Racer. Note, also, the RTS independent wheel suspension.



And the smart, eye catching, optional Spoked Front Wheel with internal expansion brake.

Tri-Sport[®]

'74



ALSPORT, INCORPORATED 84 Whittlesey, Norwalk, Ohio 44857

La Guadeloupe, Frontenac County, Quebec

Tri-Sport® '74

...IT HAD TO HAPPEN!

Alsport proudly announces its 1974 three wheel TRI-SPORT line of dependability. From the totally exciting — and practical — Street Legal* TRI-SPORT...right down through to the Mini MTS 30. And a custom Phase III Racer at the top end of the impatient racing machines. New for '74...all TRI-SPORT vehicles are equipped with Magura Twist Throttle Grips, and a two-position On/Off engine switch. A complete line of machines to fit all budget, power, pleasure, and work requirements.

MTS 30

A new look for '74 in the long-time favorite Mini for youngsters. But not to be overlooked as the right machine for smaller adults. An Alsport sales leader. The MTS 30 is powered by a 3 HP Tecumseh engine, and made of extra heavy tubular steel for youngster-rugged construction. Mini Roll Cage and Seat Pad shown are available accessory items.



MTS 30

TS 110 and TS 101

Two new economy TRI-SPORT three wheelers. The 5 HP TS 110 and the 14 HP TS 101. Both are full size and of lightweight construction. New this year for those who need a larger and/or faster machine, but still in a lower price range. Both have an aircraft type tubular steel frame and solid axles...and the TS 101 is powered by a McCulloch engine. Seat Pad is standard equipment on both machines, and Directional Brakes are standard on the TS 101. Roll Bar with Head Rest shown is an available accessory item.



TS 110

TS 101



TS 130

TS 130

The 8 HP Knobby Tire TRI-SPORT Great. Newly designed for '74. A full-bodied machine with Tecumseh 4-Cycle workhorse engine. Comes with Directional Brakes and Seat Pad. Roll Cage with Head Rest, and hub caps shown are some of the many available accessory items for the TS 130. Shown also is the Alsport 2-Passenger Trailer along with the Alsport Cargo Trailer. Both new and available through Alsport. Gang Mowers, Seeders, Lawn Rollers, Dump Trailers...all can be attached to the TS 130 TRI-SPORT machine for utility pleasure use. Get on it! TRI-SPORT '74.

RTS 8

The RTS 8 comes with the work proven 8 HP Tecumseh engine, and also has total suspension on all wheels. Shocks on the rear wheels with a split axle provide a comfort riding ratio that's unbelievable. This TRI-SPORT vehicle has the same workhorse ability as the TS 130, but with a smoother ride. Fun for all...and it loves the trails.



RTS 8

RTS MAC

RTS MAC

A Hot Stocker right out of the box. It's track born and a product of total engineering excellence. Fully suspended at all wheels; super on curves; and tops in stability on track or trail. The 14 HP McCulloch engine comes with Expansion Chamber. Directional Brakes and Color Coordinated Seat Pad are standard equipment as well as the full-coverage front fender. Cargo Rack with Head Rest is an available optional item.

RTS MAC sports the 14 HP super performance McCulloch engine with Expansion Chamber standard.

Magura Twist Throttle Grips on all TRI-SPORT vehicles. Note stylized Front Fender on the TS 130 for '74.

