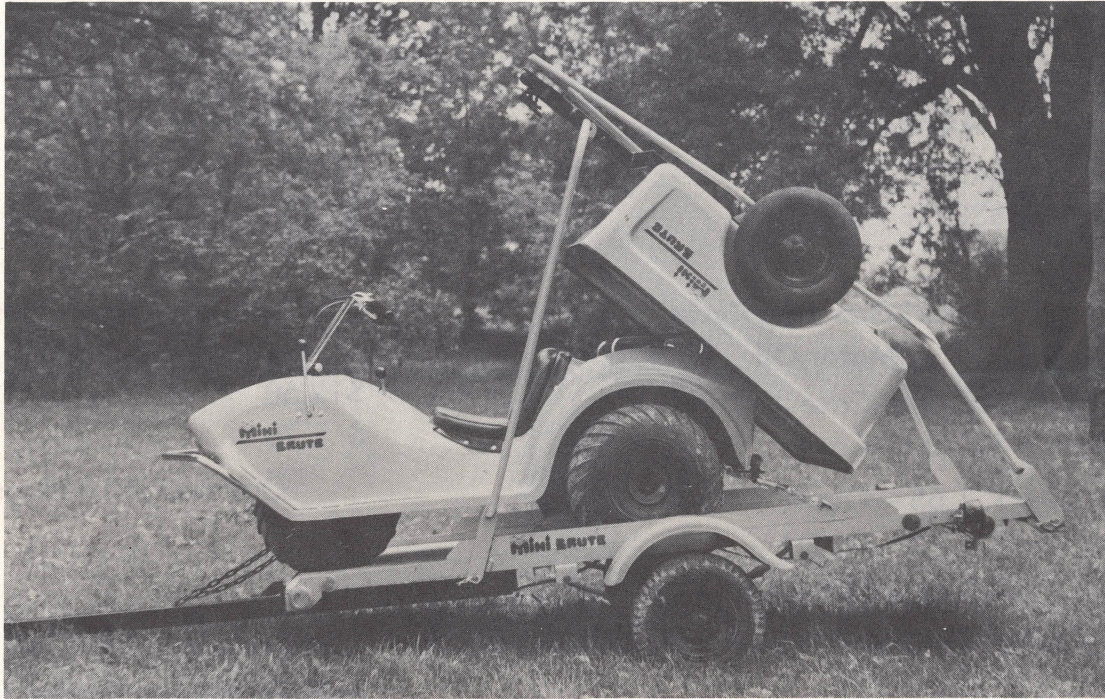


# MINI-BRUTE ALL NEW RECREATIONAL VEHICLE

## Dealer Information Sheet



134 C.C.—8 H.P. Chrysler — Recoil Starting

RETAIL PRICE	<b>\$895.00</b>
DEALER DISCOUNT	<b>\$225.00 25% off</b>
DEALER COST	<b>\$670.00</b>

180 C.C.—11½ H.P. Recoil Start Option Engine

RETAIL PRICE	<b>\$995.00</b>
DEALER DISCOUNT	<b>\$250.00 25% off</b>
DEALER COST	<b>\$745.00</b>

180 C.C.—11½ H.P. Solo Electric Start

RETAIL PRICE	<b>\$1075.00</b>
DEALER DISCOUNT	<b>\$ 265.00 25% off</b>
DEALER COST	<b>\$ 810.00</b>

PARTS PACKAGE **\$97.19**

ADVERTISING KIT **\$40.50**

TERMS

10% deposit required with each order  
Balance cash, c.o.d., or certified check  
All prices F.O.B. factory. U.S. Funds.

WARRANTY 90 Days

Prices subject to change without notice

MANUFACTURED BY

**Feldmann ENGINEERING & MANUFACTURING CO., INC.**

633-639 Monroe Street Sheboygan Falls, Wisconsin 53085

TELEPHONE 414-467-6167

OPTIONAL ACCESSORIES — OVER



**SUGGESTED DEALER PRICING ON THE FOLLOWING ITEMS:**

**Unlined Jacket**

Retail — \$12.95

Dealer — \$ 8.95

**Lined Jacket**

\$15.45

\$10.70

**All-Weather Jump Suit**

Retail — \$43.50

Dealer — \$30.50

**Mini-Brute Arm Patches**

\$1.10

\$ .75

**Lubri-Gas Two Cycle  
Motor Oil**

Retail — \$27.00 — Case

Dealer — \$21.00 — Case

Retail — \$ 1.65 — Quart

Dealer — \$ 1.15 — Quart

One Case is 18 Quarts of Oil

One Quart to Every 10 Gal. of Gas

**L-7 Champion Spark Plugs  
For Chrysler Engine**

\$12.50

\$ 7.70

One Box of 10 Plugs

**Highway Trailer**

Retail — \$185.00

Dealer — \$138.75

**M.B. Tag-Along Trailer  
For Extra Storage**

\$129.50

\$103.60

**Mini-Brute Covers**

Retail — \$32.50

Dealer — \$22.75

**Mini-Brute Trailer Hitch**

\$7.45 less ball

\$5.55 less ball

**Carrying Framework for  
M.B. Tag-Along Trailer**

Retail — \$45.00

Dealer — \$36.00

**12" Side Hand Rails**

\$10.95 a Set

\$ 8.15 a Set

**Front Mini-Brute Bumper**

Retail — \$18.95

Dealer — \$14.25

**Large Hand Rails**

\$29.95

\$20.95

All above prices are F.O.B. factory. U.S. Funds. Prices subject to change without notice.

MANUFACTURED BY

**Feldmann ENGINEERING & MANUFACTURING CO., INC.**

633-639 Monroe Street Sheboygan Falls, Wisconsin 53085

TELEPHONE 414-467-6167