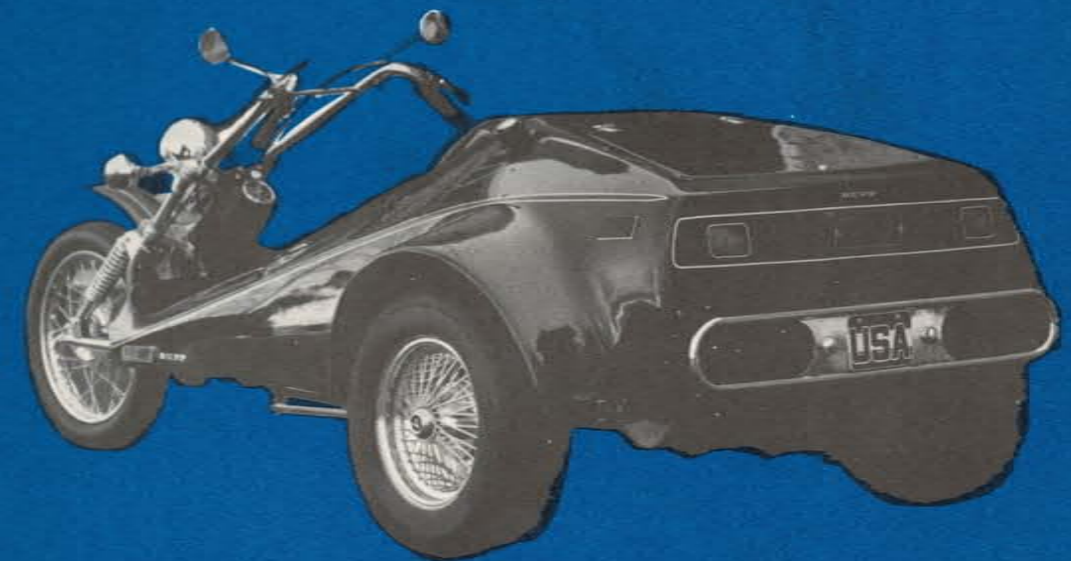


1974  
CHASSIS  
PARTS LIST



**RUPP**  
Only The Best

**RUPP**  
Only The Best

RUPP INDUSTRIES, INC. / AIRPORT ROAD / MANSFIELD, OHIO 44903

PH 37732

Printed in U.S.A.

Printed U.S.A.

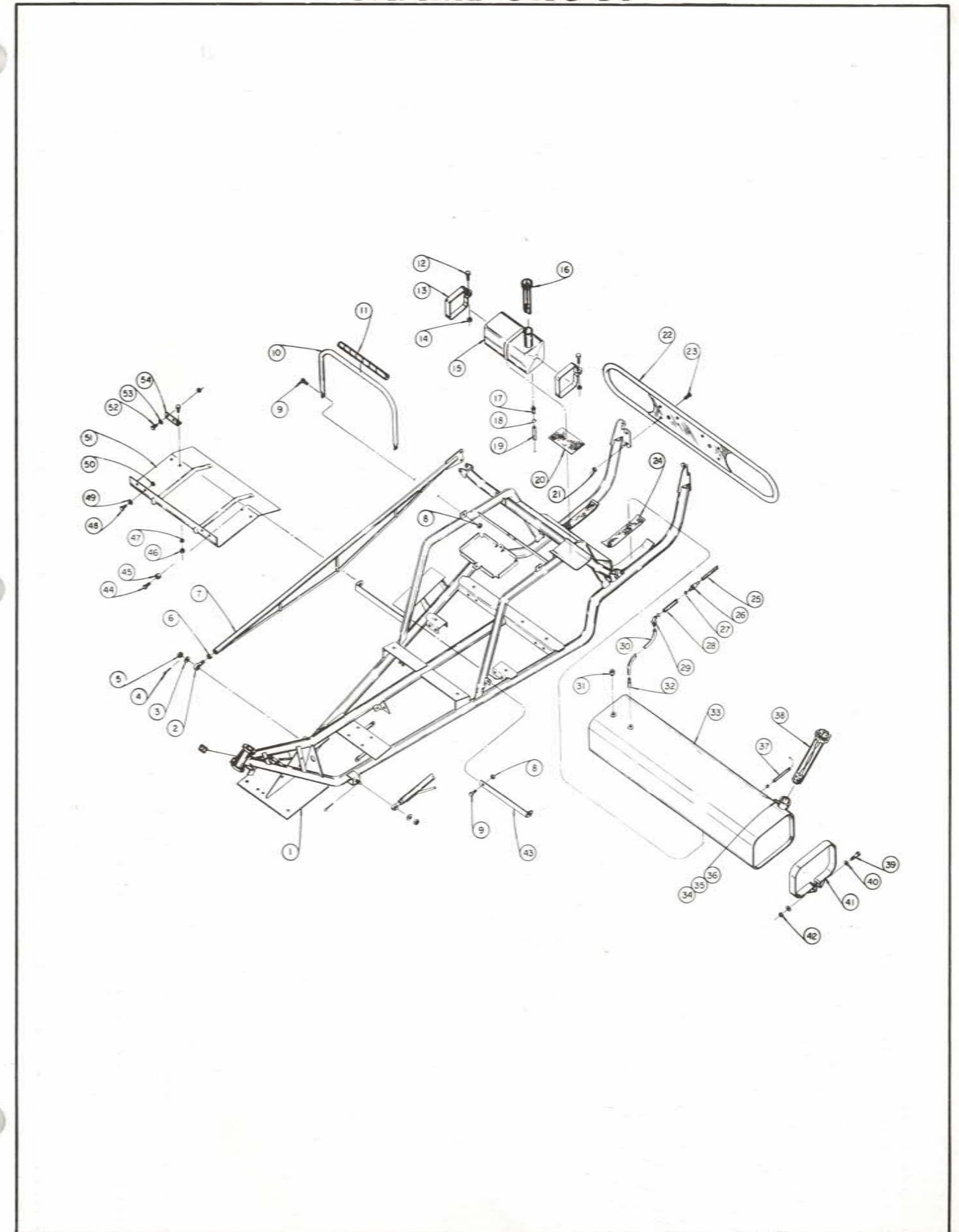
# FRAME GROUP

ITEM NO.	PART NO.	DESCRIPTION	NO. REQ'D.
1	37618	Frame Weld Ass'y	1
2	36854	Rod End	2
3	30424	F/Washer 1/2	2
4	14091	Cotter Pin 1/8 x 1 1/4	2
5	14208	Hex Slit. Nut 1/2-20	2
6	14093	Jam Nut (Thin Ht.) 1/2-20	2
7	37193	Radius Rod W/A	2
8	14029	C/Lock Nut 5/16-18	4
9	14729	H.H.C.S. 5/16-18 x 3/4	4
10	37391	Body Support	1
11	37410	Rubber Hose (Slit)	1
12	GM180024	H.H.C.S. 1/4-20 x 1 1/4	2
13	37312	Strap - Oil Reservoir	2
14	14028	C/Lock Nut 1/4-20	2
15	37225	Oil Reservoir	1
16	37286	Gauge - Oil	1
17	37455	Connector - Hose	1
18	37456	Clamp - Hose	2
19	37449	Line - Oil (2 Ft.)	as req'd
20	37152	Cork (Oil Reservoir)	1
21	14029	C/Lock Nut 5/16-18	4
22	37095	Bumper - Rear	1
23	GM455999	Carriage Bolt 5/16-18 x 5/8	4
24	37152	Cork (Fuel Tank)	2
25	16150 *	Fuel Line (Filter to Pump) 15 In.	as req'd
26	19127	Fuel Filter	1
27	32164	Clamp F/Line	7
28	16150 *	Fuel Line (Filter to Tank) 24 In.	as req'd
29	31876	Fitting 3/8 NPT	1
30	16150 *	Fuel Line (Fitting to Pick-up) 8 In.	as req'd
31	14829	Pipe Plug 3/8	1
32	37200	Fuel Pick-up	1
33	37291	Fuel Tank	1
34	30566	Hose Fitting 1/8	1
35	30567	Gasket - Fitting	1
36	14343	Hex Nut 10-32	1
37	30568	Vent Line 12 In.	as req'd
38	37087	Gauge - Fuel	1
39	15011	H.H.C.S. 1/4-28 x 1 1/2	2
40	14037	F/Washer 1/4	4
41	37226	Strap Hold Down	2
42	14027	C/Lock Nut 1/4-28	2
43	37338	Supt. Brk't Side	2
44	GM180081	H.H.C.S. 5/16-18 x 1 1/4	2
45	37417	Spacer	2
46	14028	C/Lock Nut 1/4-20	8
47	14038	F/Washer 1/4	4
48	14729	H.H.C.S. 5/16-18 x 3/4	2
49	GM446363	F/Washer 5/16	2
50	14029	C/Lock Nut 5/16-18	4
51	37635	Stone Guard	1
52	GM180018	H.H.C.S. 1/4-20 x 5/8	8
53	14045	Star Washer	2
54	37690	Brk't Stone Guard	2
Not Shown	37896	Decal - Oil Fill	1

\* Order by length in foot increments

ORDER BY LENGTH IN FOOT INCREMENTS

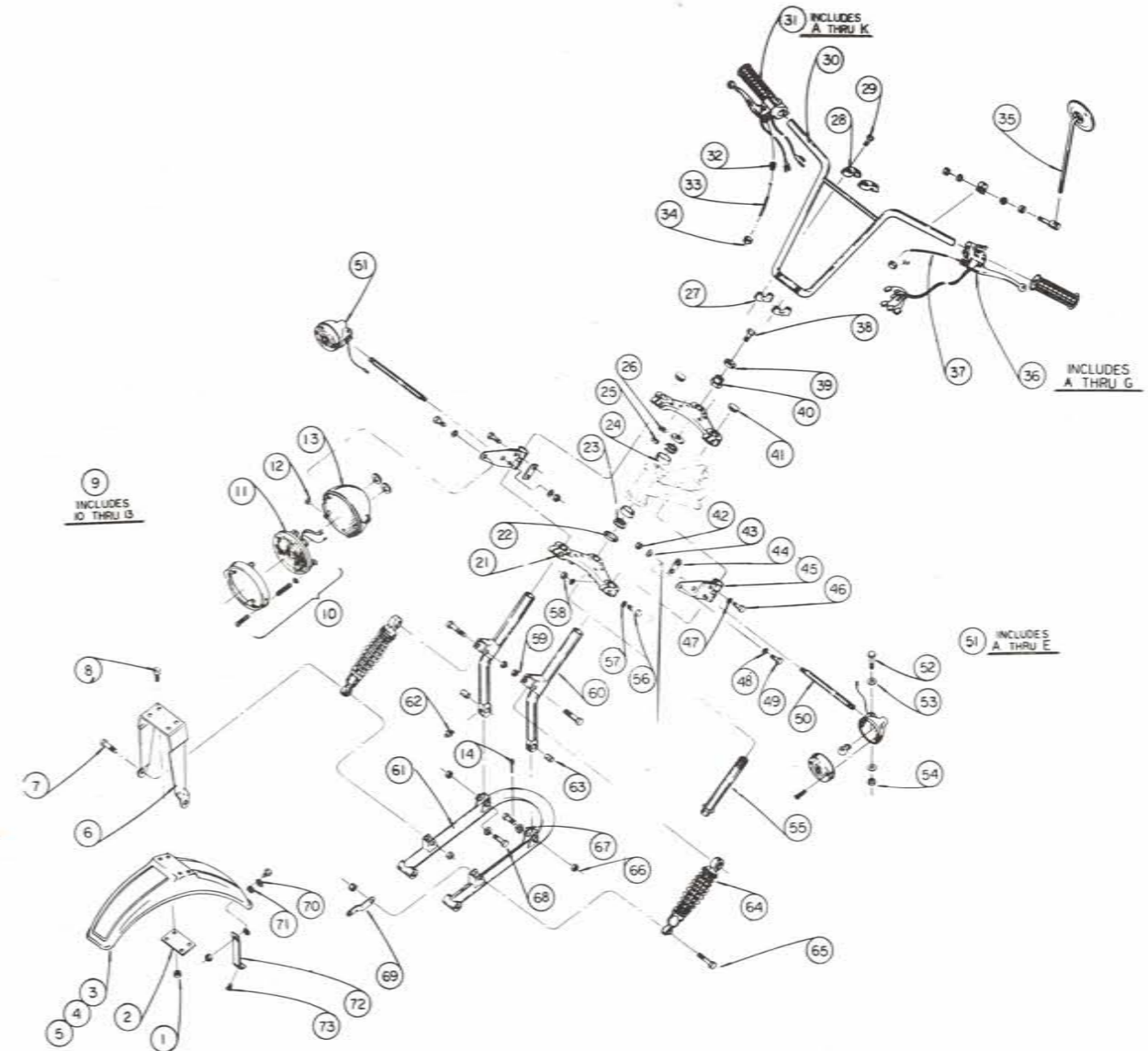
# FRAME GROUP



# STEERING & FRONT SUSPENSION GROUP

ITEM NO.	PART NO.	DESCRIPTION	NO. REQ'D.
1	14027	C/Lock Nut ¼-28	5
2	37469	Finder - Reinf.	1
3	37464	Fender	1
4	37368	Decal - FR	1
5	37369	Decal - RR	1
6	37460	Fender Strap	1
7	GM180130	H.H.C.S. 3/8-16 x 2	3
8	GM455144	RHCRMS ¼-28 x 5/8	5
9	36864	Headlight Ass'y. (Incl. 10 thru 12)	1
10	37626	Rim Ass'y	1
11	37627	Sealed Beam	1
12	32609	Bezel Screw	2
13	37628	Housing	1
14	14091	Cotter Pin 1/8 x 1¼	2
21	36840	Yoke - Strg. Col	2
22	32833	Seal - Nilos. Ring	2
23	16984	Cone Brg. - LM 11949	2
24	16985	Cup Brg. - LM 11910	2
25	14027	C/Lock Nut ¼-28	4
26	GM9414920	F/Washer ¼	4
27	33124	Base H/Bar	2
28	33125	Clamp H/Bar	2
29	GM181583	HHCS ¼-28 x 3	4
30	37139	Handlebar	1
31	36894	R.H. Control (Incl. A thru L)	1
31A	37650	Twist Grip Ass'y	1
31B	37651	Brake Lever	1
31C	37703	Shoulder Bolt	1
31D	14080	F/Washer 3/16	1
31E	GM125774	Int. T. L/Washer No. 12	1
31F	15166	Hex Nut 5mm	1
31G	37653	Adjuster - Cable (Comp.)	1
31H	37654	Brake Switch Ass'y	1
31J	37705	P.H.C.R.M.S. W/L. Washer 3mm	1
31K	37704	Soc HD. Cap SCR. 5mm x 10mm	1
32	37479	Seal - Cable	1
33	37323	Throttle Cable	1
34	30005	Cable Clip	4
35	37402	RR View Mirror (Comp.)	2
36	36893	LH Control (Incl. A thru H)	1
36A	37657	Hand Grip	1
36B	37652	Clutch Lever	1
36C	37703	Shoulder Bolt	1
36D	14080	F/Washer 3/16	1
36E	GM125774	Int. T. L/Washer No. 12	1
36F	15166	Hex Nut 5mm	1
36G	37653	Adjuster - Cable (Comp.)	1
36H	37704	Soc. Hd. C. Scr. 5mm x 10mm	1
37	37457	Cable - Clutch	1
38	GM181643	H.H.C.S. 3/8-24 x 1½	1
38A	14048	L/Washer 3/8	1
39	32832	Washer S/Col.	1
40	32734	Bushing Upr. S/Col.	1
41	37214	Plug - Button	2
42	GM9414213	L/Nut W/I 7/16-20	2
43	14081	F/Washer 7/16	2
44	30849	Spot Weld Nut	2
45	37175	H/Light Brk't	2
46	GM180020	H.H.C.S. ¼-20 x ¾	4
47	14037	F/Washer ¼	4
48	14076	L/Washer 7/16	2
49	37531	H.H.C.S. 10 mm x 14 mm	2

# STEERING & FRONT SUSPENSION GROUP



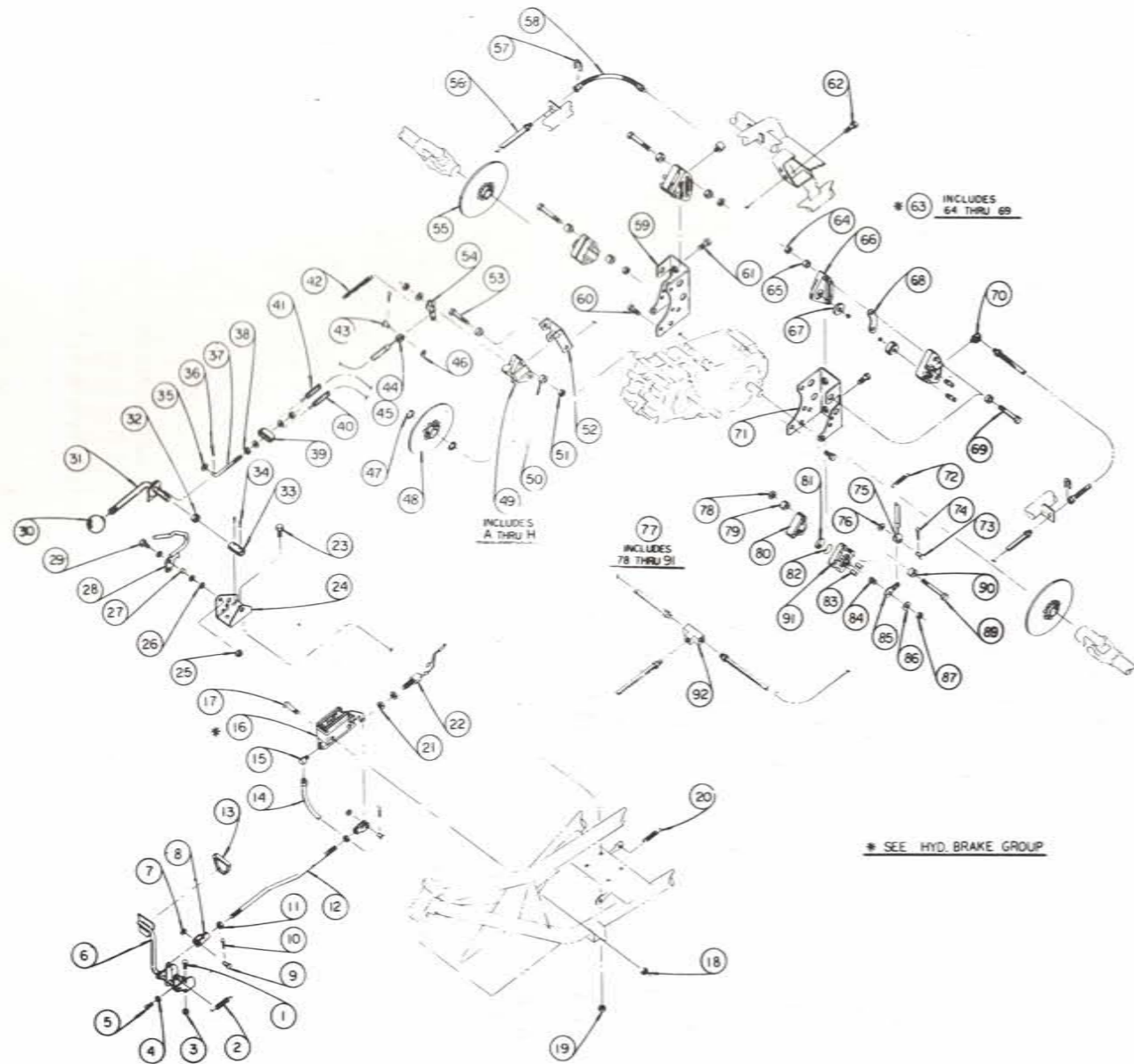
# STEERING & FRONT SUSPENSION GROUP

ITEM NO.	PART NO.	DESCRIPTION	NO. REQ'D.
50	37176	T.S. Mtg. Arm	2
51	36865	Turn Sig. Lamp Ass'y (Incl. A thru E)	2
51A	37658	Housing Ass'y	1
51B	37659	Lens - Amber	1
51C	37660	Gasket	1
51D	37702	P.H.CR.M.S. 4 mm x 28 mm	2
51E	36869	Bulb GE No. 1073	1
52	GM181573	H.H.C.S. ¼-28 x 1¼	2
53	14037	F/Washer ¼	4
54	14027	C/Lock Nut ¼-28	2
55	33105	Bolt Strg. Col.	1
56	33297	H.S.H.C.S. 5/16-24 x 2	12
57	12477	F/Washer 21/64 I.D.	24
58	GM190139	Lock Nut 5/16-24	12
59	GM456004	Lock Nut 3/8-16	4
60	37023	Front Strut	2
61	36962	Swing Frame	1
62	GM109459	Gr. Fitting ¼-28	2
63	37211	Bushing (Bronze)	2
64	36839	Shock - Front	2
65	GM180132	H.H.C.S. 3/8-16 x 2¼	1
66	GM125251	Hex Slot. Nut ½-20	2
67	37409	Washer - Spec.	2
68	37212	H.H.C.S. ½-20 x 2 3/8	2
69	37014	Keeper Brake	1
70	GM9414920	F/Washer ¼	1
71	33279	Washer - Rubber	2
72	37462	Fender Strap	1
73	14019	H.H.S.T.S. ¼ x ½ Lg.	1

# BRAKE GROUP

ITEM NO.	PART NO.	DESCRIPTION	NO. REQ'D.
1	14729	H.H.C.S. 5/16-18 x ¾	2
2	18948	Spring - Return	1
3	14029	C/Lock Nut 5/16-18	2
4	14023	Hex Nut ¼-20	1
5	GM180024	H.H.C.S. ¼-20 x 1¼	1
6	37270	Brake W/A Foot	1
7	14080	F/Washer ¼	2
8	10055	Clevis	2
9	10075	Pin - Clevis	2
10	14049	Cotter Pin	2
11	14023	Hex Nut ¼-20	2
12	37272	Tie Rod	1
13	37412	Pad - Foot	1
14	37423	Hyd. Brake Tube 30 In.	1
15	37420	½ Union Ell	1
16	37777	Master Cylinder	1
17	GM180087	H.H.C.S. 5/16-18 x 2	2
18	14029	C/Lock Nut 5/16-18	2
19	14031	C/Lock Nut 3/8-16	2
20	18948	Spring - Return	1
21	14093	Hex Jam Nut ½-20	2
22	37273	Stoplight Switch	1
23	GM180122	H.H.C.S. 3/8-16 x 1	2
24	37231	Brk't - Lever Mtg.	1
25	14027	C/Lock Nut ¼-28	1
26	GM9422770	F/Washer ¼	3
27	31680	Actuating Bushing	1
28	37253	Release Arm	1
29	GM181566	H.H.C.S. ¼-28 x ¾	1
30	37290	Knob	1
31	37248	Parking Lever	1
32	37299	Spacer - Parking Brake	1
33	37242	Carrier	1
34	GM9422127	Spring Pin 3/16 Dia x ¾ Lg.	2
35	14080	F/Washer ¼	3
36	14051	Cotter Pin 3/32 x ½	2
37	37288	Rod - Adjusting	1
38	14022	Hex Nut ¼-28	2
39	10170	Adaptor Cable	1
40	37403	Brake Cable LH	1
41	37404	Brake Cable RH	1
42	32356	Spring - Return	1
43	12404	Pin - Clevis	1
44	34687	Clevis	1
45	37457	Cable - Clutch	1
46	14080	F/Washer ¼	1
47	37586	Snap Ring	2
48	37707	Disc Ass'y (Input Shaft)	1
49	37227	Caliper - Mech. (Incl. A thru J)	1
49A	37710	Puck (Pair)	1
49B	37713	Housing (Actuator Side)	1
49C	37714	Anvil	1
49D	37711	Back up washer	1
49E	13728	Push Pin	2
49F	13798	Spring	1
49G	GM9418924	F/Washer 5/16	1
49H	14055	C/Lock Nut 5/16-24	1
50	37715	Spacer - Brake	4
51	14029	C/Lock Nut 5/16-18	2
52	37716	Brk't - Brake	1
53	GM122085	H.H.C.S. 5/16-18 x 2¾	2
54	13628	Brake Arm	1

# BRAKE GROUP



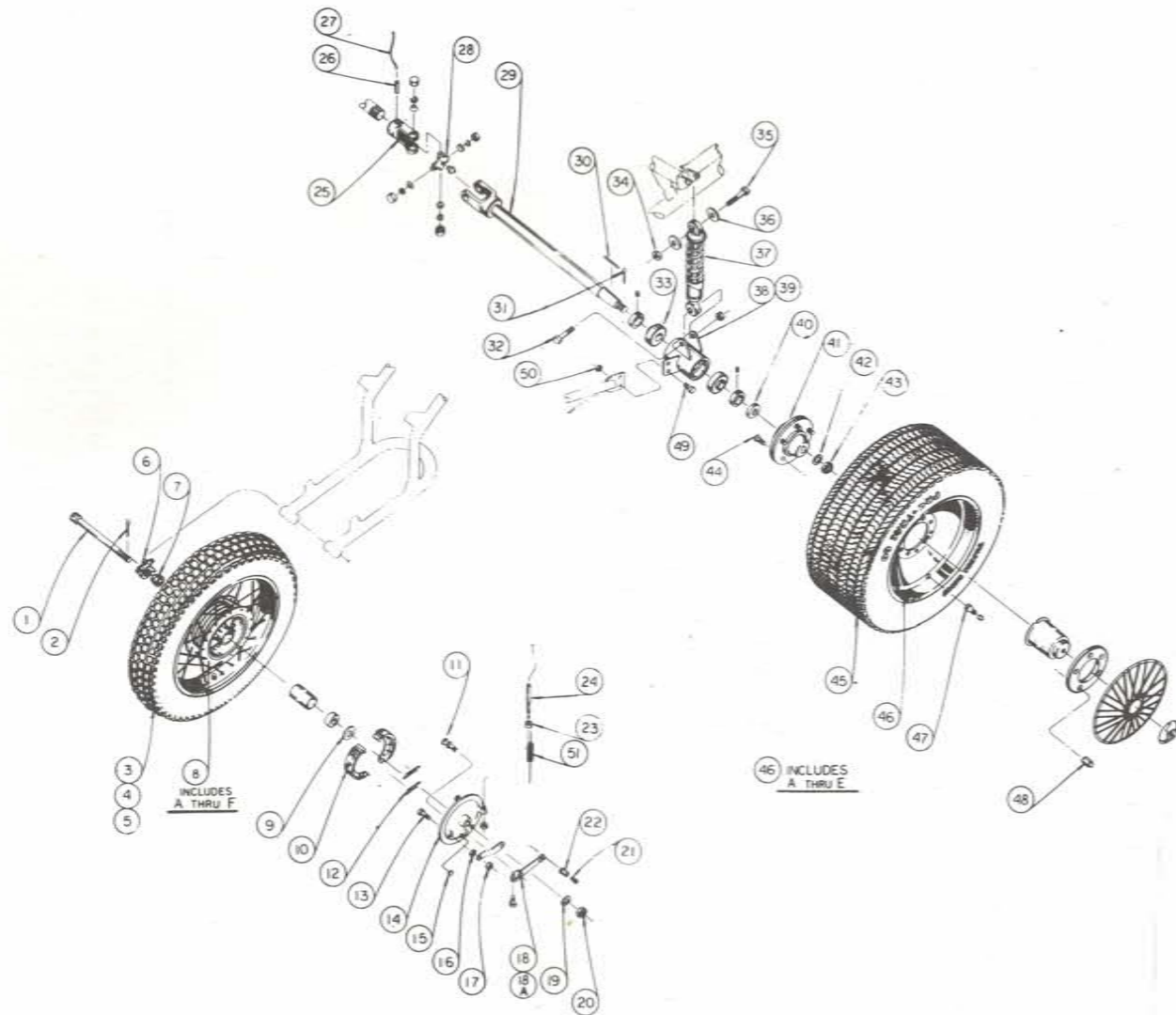
# BRAKE GROUP

ITEM NO.	PART NO.	DESCRIPTION	NO. REQ'D.
55	37708	Disc Ass'y (Rear Axle)	2
56	37422	Hyd. Brake Tube 41 In.	2
57	37470	Hose Clip	2
58	37421	Hose - Brake	2
59	37188	Tr. Brake Mtg. Ass'y RH	1
60	14190	H.F.W.L.S. 3/8-16 x 5/8	6
61	14192	H.F.W.L.S. 3/8-16 x 3/4	8
62	14011	H.F.W.L.S. 5/16-18 x 1/2	4
63	37694	Caliper Ass'y Hyd. (Incl. 64 thru 69)	2
64	14030	C/Lock Nut 3/8-24	4
65	37183	Bushing	8
66	37692	Housing Ass'y	2
67	37693	Liner W/Screws (Kit) Secure W/Loctite	2
68	37182	Spacer	2
69	GM187044	H.H.C.S. 3/8-24 x 3 1/2	4
70	37418	90° Street Ell	2
71	37187	TR. Brake Mtg. Ass'y LH	1
72	18948	Spring - Return	2
73	12404	Pin - Clevis	2
74	14051	Cotter Pin 3/32 x 1/2	2
75	34687	Clevis	2
76	14080	F/Washer 1/4	2
77	37228	Caliper Ass'y Mech. (Comp.) Incl. 78 thru 91	2
78	14055	C/Lock Nut 5/16-24	4
79	37185	Spacer	4
80	37714	Anvil	2
81	37710	Pucks (Pair)	2
82	37711	Back up Washer	2
83	13728	Push Pins	4
84	13798	Spring	2
85	37712	Brake Arm	2
86	GM9418924	F/Washer 5/16	2
87	14055	C/Lock Nut 5/16-24	2
89	GM189323	H.H.C.S. 5/16-24 x 3 1/2	4
90	37249	Spacer Lg.	4
91	37713	Housing (Actuator Side)	2
92	37419	Flared Tee	1

\* SEE HYDRAULIC BRAKE GROUP FOR REPLACEMENT PARTS LISTING

# WHEELS & REAR SUSPENSION GROUP

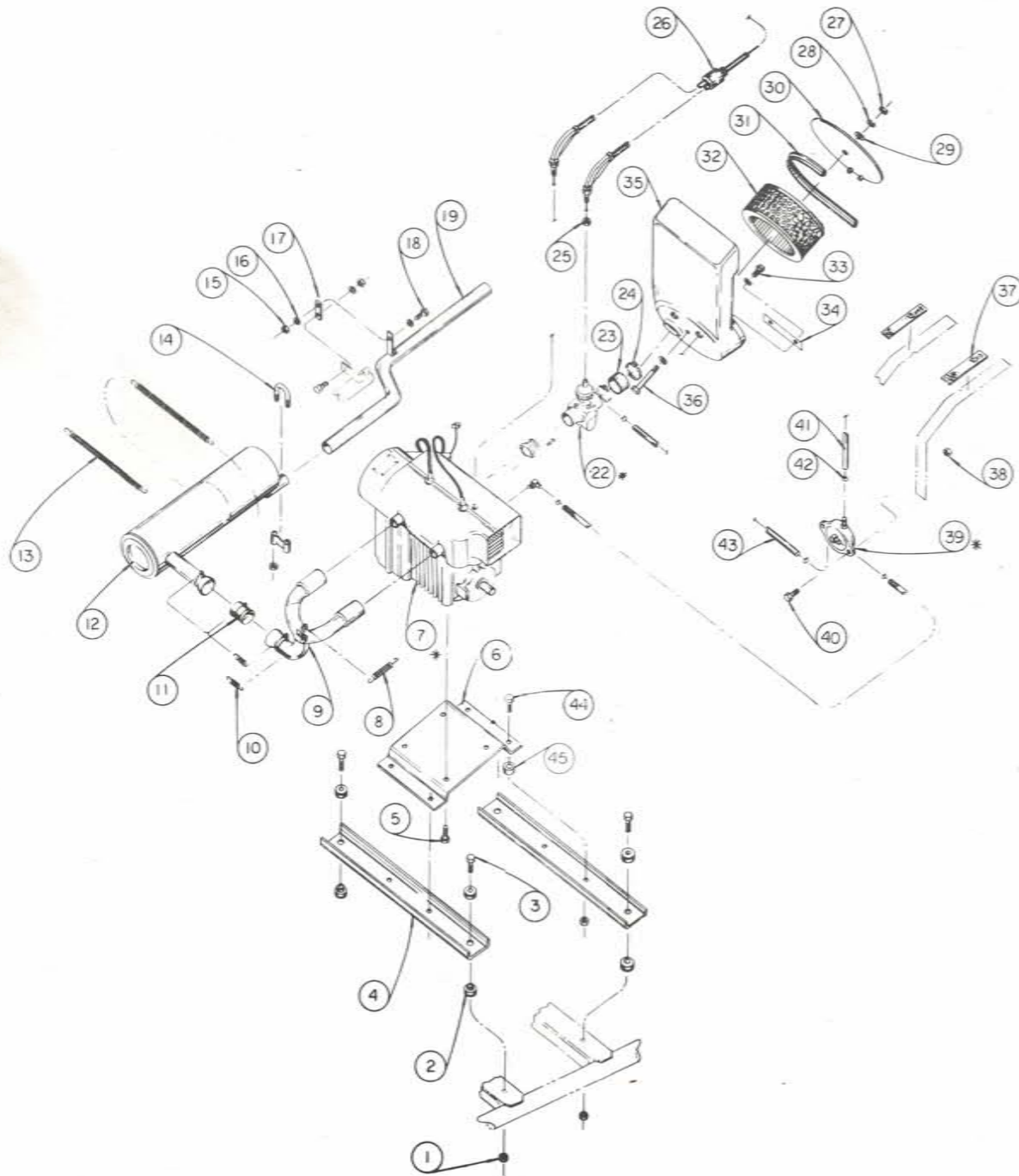
# WHEELS & REAR SUSPENSION GROUP



ITEM NO.	PART NO.	DESCRIPTION	NO. REQ'D.
1	36999	Front Axle	1
2	14091	Cotter Pin 1/8 x 1 1/4	1
3	36842	Tire FR. No. 3.25 x 16	1
4	36843	Tube	1
5	30607	Rim Strip	1
6	30795	Speedometer Drive	1
7	37235	Speedometer Bush.	1
8	36841	Wheel - Front Ass'y (Incl. A thru F)	1
8A	32853	Rim	1
8B	37616	Spoke	36
8C	15589	Nipple	36
8D	37524	Hub - Front	1
8E	37617	Bearing - Spanner	1
8F	18368	Bearing - 15mm	2
9	37689	Washer - Felt	1
10	37686	Brake Shoes - 140mm (Pair)	1
11	37687	Cam	1
12	37688	Springs	2
13	15062	H.H.C.S. 10mm x 35mm	1
14	37523	Backing Plate	1
15	37500	Plug	2
16	37734	Jam Nut (Thin Ht.) 10mm	1
17	37733	W. Ins. Hex L/Nut 10mm	1
18	37525	Actuating Arm	1
18A	37737	H.H.C.S. 6mm x 25mm	1
19	GM121458	F/Washer 9/16	1
20	GM125259	Hex Slit. Nut 9/16-18	1
21	14016	H.H.M.S. No. 8-32 x 5/16	1
22	37520	Swivel	1
23	GM124920	Jam Nut 5/16-24	2
24	37448	FR. Brake Cable	1
25	37666	Yoke - Splined End	2
26	GM455248	Spirol Pin 1/4 x 1 1/4	2
27	37668	Safety Wire 7 1/2 In. Lg.	2
28	37667	Center Kit (Rockwell No. CPL-6N-30)	2
29	37213	Axle - Rear Ass'y	2
30	12238	Key 1/4 x 1/4 x 2	2
31	GM137204	Cotter Pin 1/8 x 1 1/2	2
32	16618	H.H.C.S. 7/16-20 x 2	2
33	15979	Bearing	4
34	14058	C/Lock Nut 7/16-20	4
35	GM181675	H.H.C.S. 7/16-20 x 2 1/4	2
36	37131	Spacer - Shock	4
37	37427	Rear Shock Ass'y	2
38	37091	LH. Brg. Housing	1
39	37092	R.H. Brg. Housing	1
40	37220	Spacer RR/Axle	2
41	37425	Rear Hub Ass'y	2
42	14082	F/Washer 3/4	2
43	GM9429121	Hex Slit. Nut 3/4-16	2
44	37174	Wheel Bolt 1/2-20	10
45	36856	Rear Tire No. B60-13	2
46	36857	Rim Ass'y Rear (Incl. A thru E)	2
46A	37526	Rim	1
46B	37527	Ring - Retainer	1
46C	37528	Dust Cover	1
46D	37529	Spoke Wheel Cover	1
46E	37530	Hub Cover	1
47	37058	Valve Stem	2
48	36858	Lug Nut 1/2-20	10
49	GM454904	H.H.C.S. 3/8-16 x 3/4	4
50	GM9416578	C/Lock Nut 3/8-16	4
51	37837	Return Spring	4

# ENGINE, CARBURETION & EXHAUST GROUP

# ENGINE, CARBURETION & EXHAUST GROUP



ITEM NO.	PART NO.	DESCRIPTION	NO. REQ'D.
1	14031	C/Lock Nut 3/8-16	8
2	34782	Motor Mtg. Ass'y	4
3	GM180130	H.H.C.S. 3/8-16 x 2	4
4	37073	Support Mtr./Mtg.	2
5	37905	H.F.W.L.S. 3/8-16 x 1	4
6	37018	Mount - Motor	1
7	25245 *	Engine - 340 2AS	1
8	37004	Spring - Manifold	1
9	36883	Manifold - Exhaust	1
10	37003	Spring - B/Joint	4
11	36884	Ball Joint - Center	1
12	36882	Muffler	1
13	32356	Spring - Mtg. Muffler	2
14	36680	Clamp Ass'y	1
15	14029	C/Lock Nut 5/16-18	2
16	GM446363	F/Washer 5/16	2
17	37458	Mtg. Strap	1
18	GM180079	H.H.C.S. 5/16-18 x 1	2
19	37307	Exhaust Pipe	1
22	36877 *	Carburetor	1
23	37496	Adapter - Air Box	1
24	15061	Tie Strap - Nylon	2
25	34843	Hex Nut 6mm	2
26	37323	Throttle Cable Ass'y	1
27	14024	Hex Nut 5/16-18	1
28	14047	L/Washer	3
29	GM9418924	F/Washer	2
30	37480	Cover - Air Box	1
31	37741	Seal - Air Box Upper	1
31A	37749	Seal - Air Box Lower (Not Shown)	1
32	37773	Filter Kit Incl. 31 & 31A (Fram CA 148 PL)	1
33	GM180079	H.H.C.S. 5/16-18 x 1	2
34	37482	Keeper - Air Box	1
35	37700	Air Box Ass'y	1
36	GM178429	H.H.C.S. 5/16-18 x 4	1
37	19731	Supt. Cushion 4 In. Lg.	2
38	14028	C/Lock Nut 1/2-20	2
39	37059 *	Fuel Pump	1
40	14503	H.H.C.S. 1/4-20 x 7/8	2
41	16150 Δ	Fuel Line (Pump to Filter) 15 In. Lg.	as req'd
42	32164	Clamp - Fuel Line	5
43	16150 Δ	Fuel Line (Pump to Carb.) 10 In. Lg.	as req'd
44	GM180124	H.H.C.S. 3/8-16 x 1 1/4	4
45	37898	Spacer	

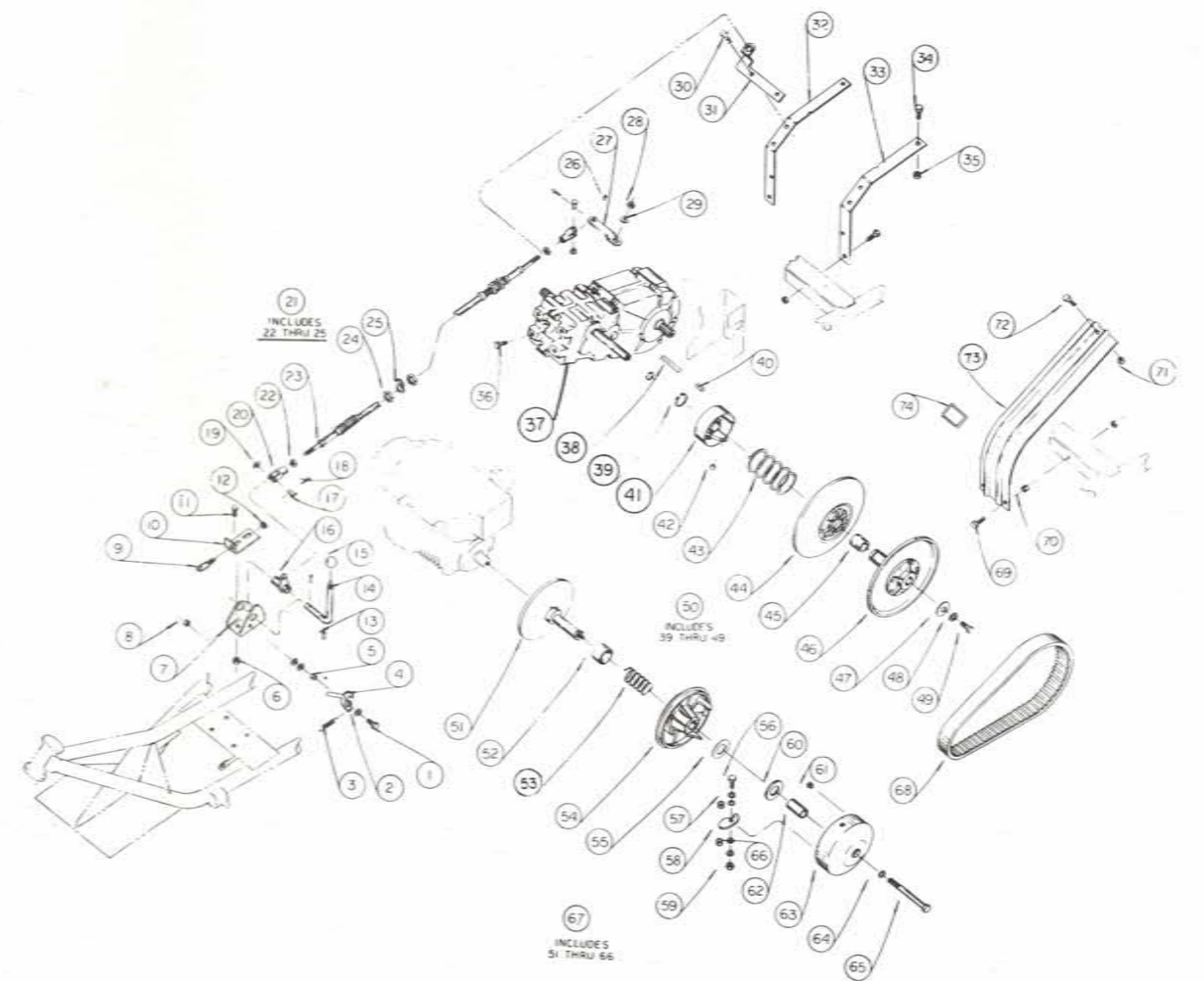
ΔORDER BY LENGTH IN FOOT INCREMENTS  
 \* SEE ENGINE PARTS MANUAL FOR REPLACEMENT PARTS

# T.C. & TRANS. DRIVE GROUP

ITEM NO.	PART NO.	DESCRIPTION	NO. REQ'D.
1	GM181566	H.H.C.S. 1/4-28 x 3/4	1
2	GM9422770	F/Washer 1/4	3
3	37510	Spring - Return	1
4	37241	Shift Release	1
5	31680	Act. Bushing	1
6	14031	C/Lock Nut 3/8-16	2
7	37231	Brk't - Lever Mtg.	1
8	14027	C/Lock Nut 1/4-28	1
9	37273	Neutral Switch	1
10	37611	Brk't Neutral Sw.	1
11	GM180122	H.H.C.S. 3/8-16 x 1	2
12	14093	Hex Jam Nut 1/2-20	2
13	GM9422127	Spring Pin 3/16 x 3/4	3
14	37238	Shift Lever	1
15	37290	Knob	1
16	37244	Shift Arm	1
17	10075	Pin Clevis	2
18	14049	Cotter Pin	2
19	14080	F/Washer 1/4	2
20	10055	Clevis	2
21	37282	Shifter Cable Ass'y	1
22	GM120613	Hex Nut 1/4-28	2
23	37479	Seal	2
24	14025	Hex Nut 5/8-18	4
25	37663	Beveled Washer	4
26	37440	Spacer - Shift Arm	1
27	37561	Shift Arm - Trans.	1
28	GM9419455	Lock Nut	1
29	GM446363	F/Washer 5/16	1
30	30494	H.F.W.L.S. 3/8-16 x 1	2
31	37329	Brk't - Shift Cable	1
32	37306	Trans. Htg. RH	1
33	37305	Trans. Mtg. LH	1
34	GM180120	H.H.C.S. 3/8-16 x 3/4	4
35	14031	C/Lock Nut 3/8-16	4
36	14192	H.F.W.L.S. 3/8-16 x 3/4	2
37	36E49	Transaxle	1
38	17221	Key 1/4 x 1/4 x 4 1/4	1
39	37552	Retaining Ring	1
40	17237	Key 1/4 x 1/4 x 3/4	1
41	37548	Driven Cam Ass'y	1
42	37549	Sliding Shoe	3
43	37547	Spring - Driven	1
44	37545	Sliding Half	1
45	37546	Bushing	1
46	37544	Fixed Half	1
47	15969	F/Washer 15/32 ID. x 1 1/2 OD.	1
48	14048	L/Washer 3/8	1
49	GM180120	H.H.C.S. 3/8-16 x 3/4	1
50	36861	Driven T.C. Ass'y	1
51	37532	Fixed Pulley	1
52	37533	Fixed Center	1
53	37534	Spring	1
54	37535	Sliding Half Ass'y	1
55	37538	Pad Spacer	1
56	14616	H.H.C.S. 5/16-18 x 1 1/2	3
57	37537	Tension Washer	6
58	37542	Counter Weight	3
59	GM9419455	Nylock Nut 5/16-18	3
60	37539	Wear Pad	1
61	37540	Sliding Shoe	3
62	37536	Bushing	1

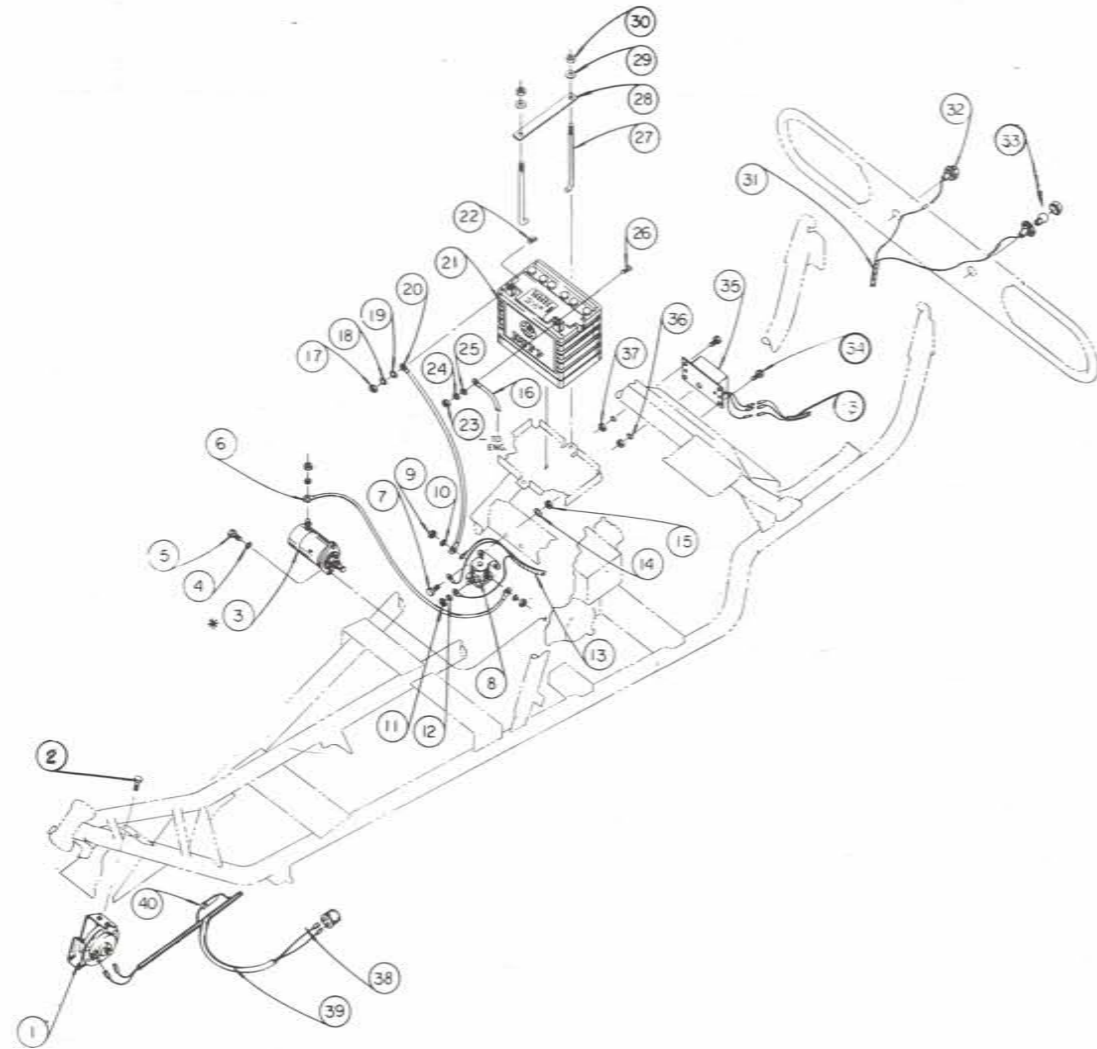
# T.C. & TRANS. DRIVE GROUP

ITEM NO.	PART NO.	DESCRIPTION	NO. REQ'D.
63	37541	Drive Cover	1
64	30153	Washer	1
65	GM9430821	H.H.C.S. 1/2-20 x 5	1
66	37543	Counter Weight Bush.	3
67	36860	Drive T.C. Ass'y (Incl. 51 thru 66)	1
68	37277	Belt T.C.	1
69	GM180081	H.H.L.S. 5/16-18 x 1 1/4	2
70	37417	Spacer	2
71	14029	C/Lock Nut 5/16-18	3
72	GM179812	H.H.C.S. 5/16-18 x 1/2	1
73	37393	Guard - T.C.	1
74	15287	Decal - Caution	1





# ELECTRICAL GROUP

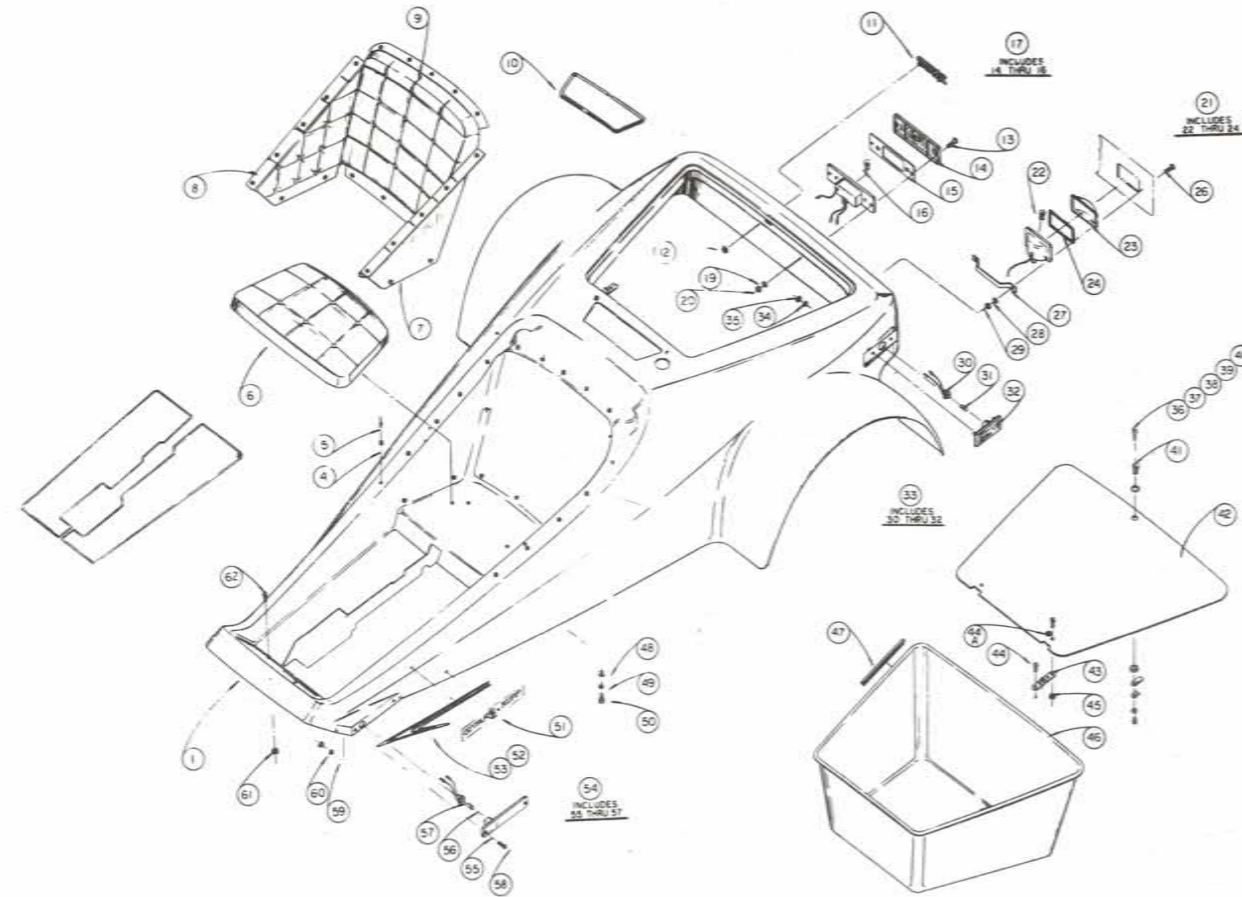


# ELECTRICAL GROUP

ITEM NO.	PART NO.	DESCRIPTION	NO. REQ'D.
1	36867	Horn 12-V	1
2	14011	H.F.W.L.S. 5/16-18 x 1/2	1
3	36876	Motor - Electrical Start	1
4	14047	L/Washer 5/16	2
5	GM180079	H.H.C.S. 5/16-18 x 1	2
6	37612	Cable (Sol. to Starter)	1
7	GM180018	H.H.C.S. 1/4-20 x 5/8	8
8	36620	Solenoid Starter	1
9	GM124920	Hex Jam Nut 5/16-24	4
10	14047	L/Washer 5/16	4
11	14343	Hex Nut No. 10-32	2
12	14043	L/Washer No. 10	2
13	37485	Harness - Frame	1
14	14045	Star Washer	2
15	14028	C/Lock Nut 1/4-20	8
16	37613	Cable (Batt. Neg. to Eng.)	1
17	14024	Hex Nut 5/16-18	1
18	14047	L/Washer 5/16	1
19	GM446363	F/Washer 5/16	1
20	37614	Cable (Batt. Pos. to Sol.)	1
21	36866	Battery 12-V	1
22	14312	Carr. Bolt 5/16-18 x 3/4	1
23	14023	Hex Nut 1/4-20	1
24	14044	L/Washer 1/4	1
25	14037	F/Washer 1/4	1
26	GM120518	Carr. Bolt 1/4-20 x 3/4	1
27	37170	Rod - Tie Down	2
28	37167	Battery H/Down	1
29	14038	F/Washer 1/4	2
30	14028	C/Lock Nut 1/4-20	2
31	37484	Harness Body	1
32	36892	License Ill. Ass'y (Incl. No. 33)	2
33	37669	Bulb GE No 67	2
34	14116	T.H.P.M.S. No. 10-32 x 3/4	2
35	37155	Rectifier & Regulator	1
36	14502	Star Washer	2
37	15021	C/Lock Nut No. 10-32	2
38	36868	Flasher Unit	1
39	37483	Harness - Front Fork	1
40	GM120151	Fuse No.	1

\* SEE ENGINE PARTS MANUAL FOR REPLACEMENT PARTS

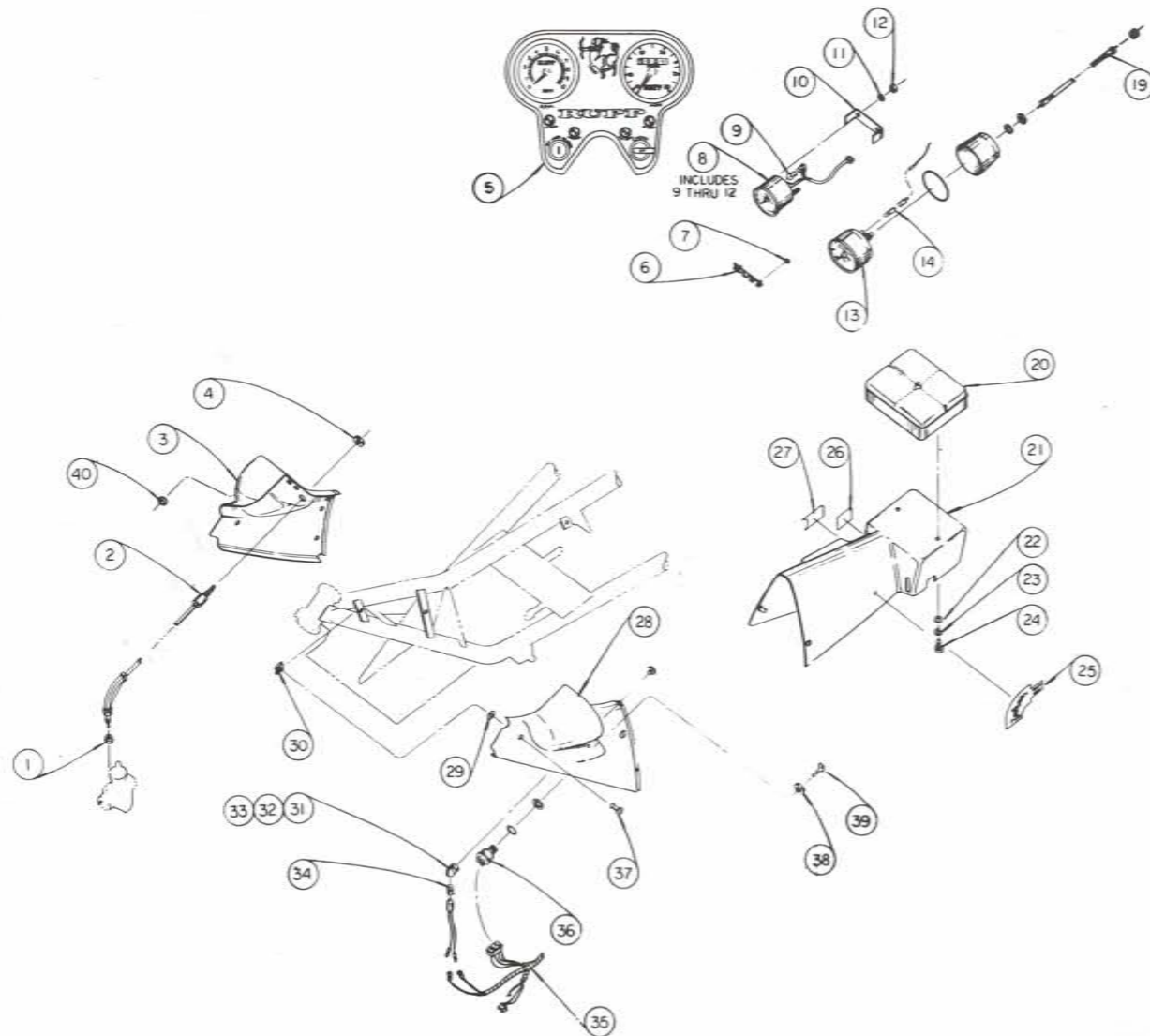
# BODY & LIGHTING GROUP



# BODY & LIGHTING GROUP

ITEM NO.	PART NO.	DESCRIPTION	NO. REQ'D.
1	37313	Body - Centaur	1
2	37376	Carpet LH	1
3	37377	Carpet RH	1
4	10016	Snap - Uph.	22
5	14151	Rivet	22
6	37372	Seat - Bottom	1
7	37373	Side Panel LH	1
8	37374	Side Panel RH	1
9	37371	Seat Back	1
10	37615	Trim 25 Approx.	as req'd
11	31904	Rupp Logo	1
12	13503	Push Nut	2
13	14198	P.H.H.S. No. 10-24 x 3/4	2
14	37639	Lens - T/Light	1
15	34723	Gasket	1
16	12439	Bulb GE No. 1157	1
17	37637	T/Light Ass'y (Incl. 14 thru 15)	1
19	14043	L/Washer No. 10	2
20	14067	Hex Nut No. 10-24	2
21	37640	Turn Signal Ass'y (Incl. 22 thru 24)	2
22	36869	Bulb GE No. 1073	1
23	37641	Lens - Turn Signal	1
24	37642	Gasket	1
26	GM159920	P.H.M.S. No. 10-24 x 1/2	4
27	37488	Mtg. Strap	2
28	14043	L/Washer No. 10	4
29	14067	Hex Nut No. 10-24	4
30	37644	Socket - Side Light	1
31	19059	Bulb GE No. 168	1
32	37645	Lens - Side Light	1
33	36985	RR Side Light Ass'y (Incl. 30 thru 32)	2
34	14043	L/Washer No. 10	4
35	14343	Hex Nut No. 10-32	4
36	36887	Key No. 001	2
37	36888	Key No. 160	2
38	36889	Key No. 213	2
39	36890	Key No. 287	2
40	36891	Key No. 400	2
41	36886	Latch Ass'y	1
42	37314	Deck Lid	1
43	37447	Hinge	2
44	14200	P.H.CR.M.S. 1/4-20 x 3/4	4
44A	14037	F/Washer 1/4	4
45	14028	C/Lock Nut 1/4-20	4
46	37315	Trunk	1
47	37521	Seal - Trunk 89 In. Approx.	as req'd
48	GM9818924	F/Washer 1/4	2
49	14044	L/Washer 1/4	2
50	GM180020	H.H.C.S. 1/4-20 x 3/4	2
51	37370	Centaur - Decal	2
52	37362	LH Stripe	1
53	37363	RH Stripe	1
54	37646	FR Side Light Ass'y (Incl. 55 thru 57)	2
55	36916	Lens Ass'y	1
56	19059	Bulb GE No. 168	2
57	37186	Socket Ass'y	2
58	GM154993	R.H.C.M.S. No. 6-32 x 5/8	4
59	GM131181	L/Washer No. 6	4
60	GM134530	Hex Nut No. 6-32	4
61	14029	C/Lock Nut 5/16-18	8
62	GM157777	T.H.C.R.M.S. 5/16-18 x 1	8

# CONSOLE GROUP



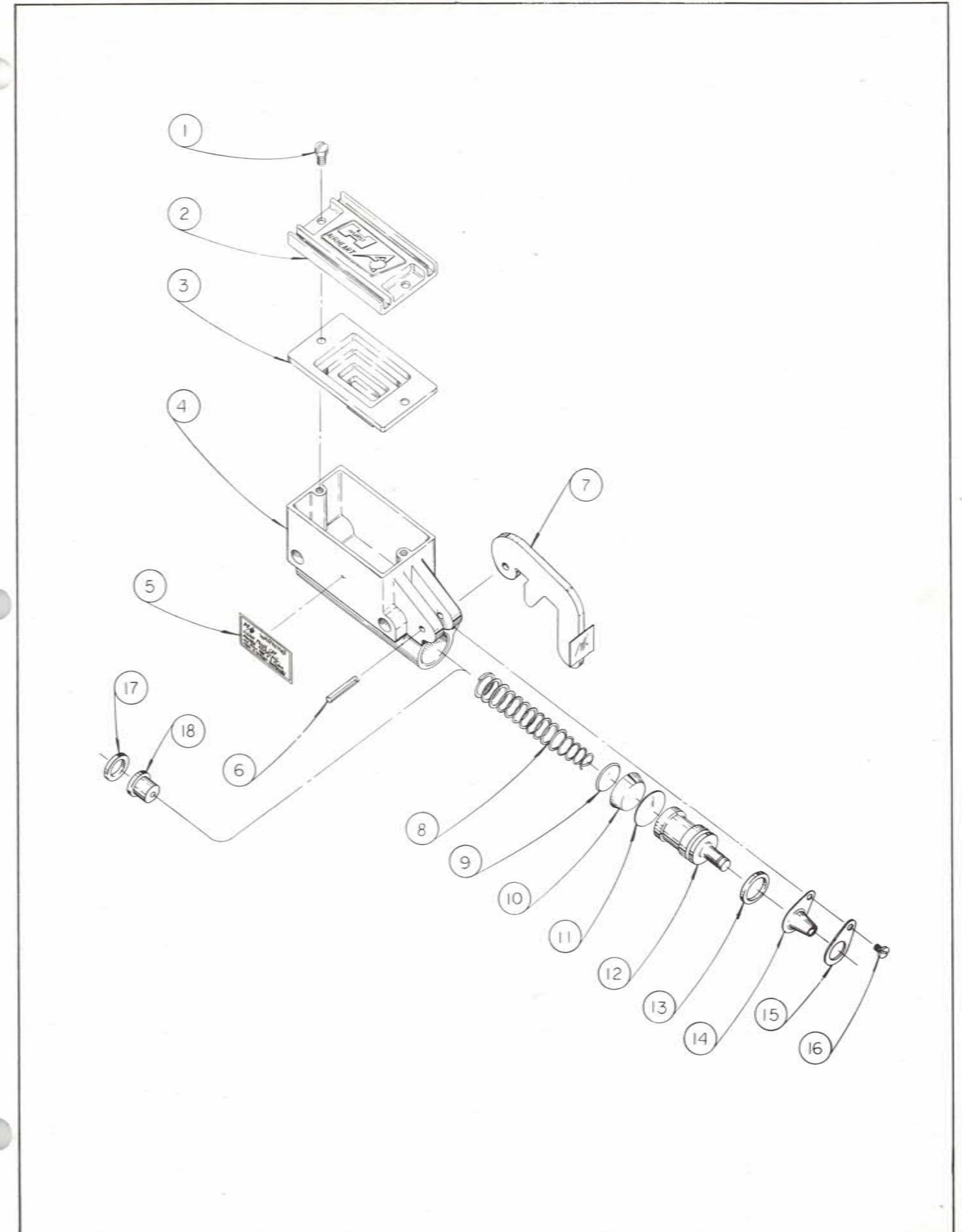
# CONSOLE GROUP

ITEM NO.	PART NO.	DESCRIPTION	NO. REQ'D.
1	34843	Hex Nut 6mm	1
2	36885	Choke Ass'y	1
3	37317	Console LH	1
4	34844	Panel Nut	1
5	37364	Dash - Decal	1
6	31904	Rupp Logo	1
7	13503	Push Nut	2
8	33393	Tachometer Ass'y (Incl. 9 thru 12)	1
9	GM131282	Bulb GE No. 53	1
10	33395	Mtg. Brk't	1
11	14075	L/Washer No. 8	2
12	14066	Hex Nut No. 8-32	2
13	36873	Speedometer Ass'y (Comp.)	1
14	37629	Bulb - Osram No. 3868	1
19	36874	Speedometer Cable Ass'y	1
20	37375	Console Pad	1
21	37318	Console - Rear	1
22	GM9418924	Fender Washer 5/16	2
23	14044	L/Washer ¼	2
24	GM180020	H.H.C.S. ¼-20 x ¾	2
25	37365	Shift - Decal	1
26	37367	Brake Release - Decal	1
27	37366	Parking Brake - Decal	1
28	37316	Console LH	1
30	11858	Speed Nut ¼-20	8
31	37005	Indicator Light - Blue	1
32	37006	Indicator Light - Green	1
33	37007	Indicator Light - Yellow	2
34	GM131282	Bulb GE No. 53	4
35	37485	Harness - Frame	1
36	37390	Ign. Switch	1
37	14200	P.H.C.R.M.S. ¼-20 x ¾	8
38	19777	Nut - Ign. Switch	1
39	37623	Key - Ign. Switch	1
40	37477	Grommet - Cable	1

# HURST/AIRHEART MASTER CYLINDER

ITEM NO.	PART NO.	DESCRIPTION	NO. REQ'D.
1	36945	Screw	2
2	36943	Cap	1
3	36942	Diaphragm	1
4	36931	Housing	1
5	37778	Decal (Warning)	1
6	36939	Roll Pin	1
7	36941	Lever	1
8	36936	Spring	1
9	36934	Cup Protector	1
10	36933	Cup	1
11	37751	Shim	1
12	36932	Piston	1
13	36935	Seal	1
14	36938	Boot	1
15	36937	Retainer	1
16	36940	Screw	1

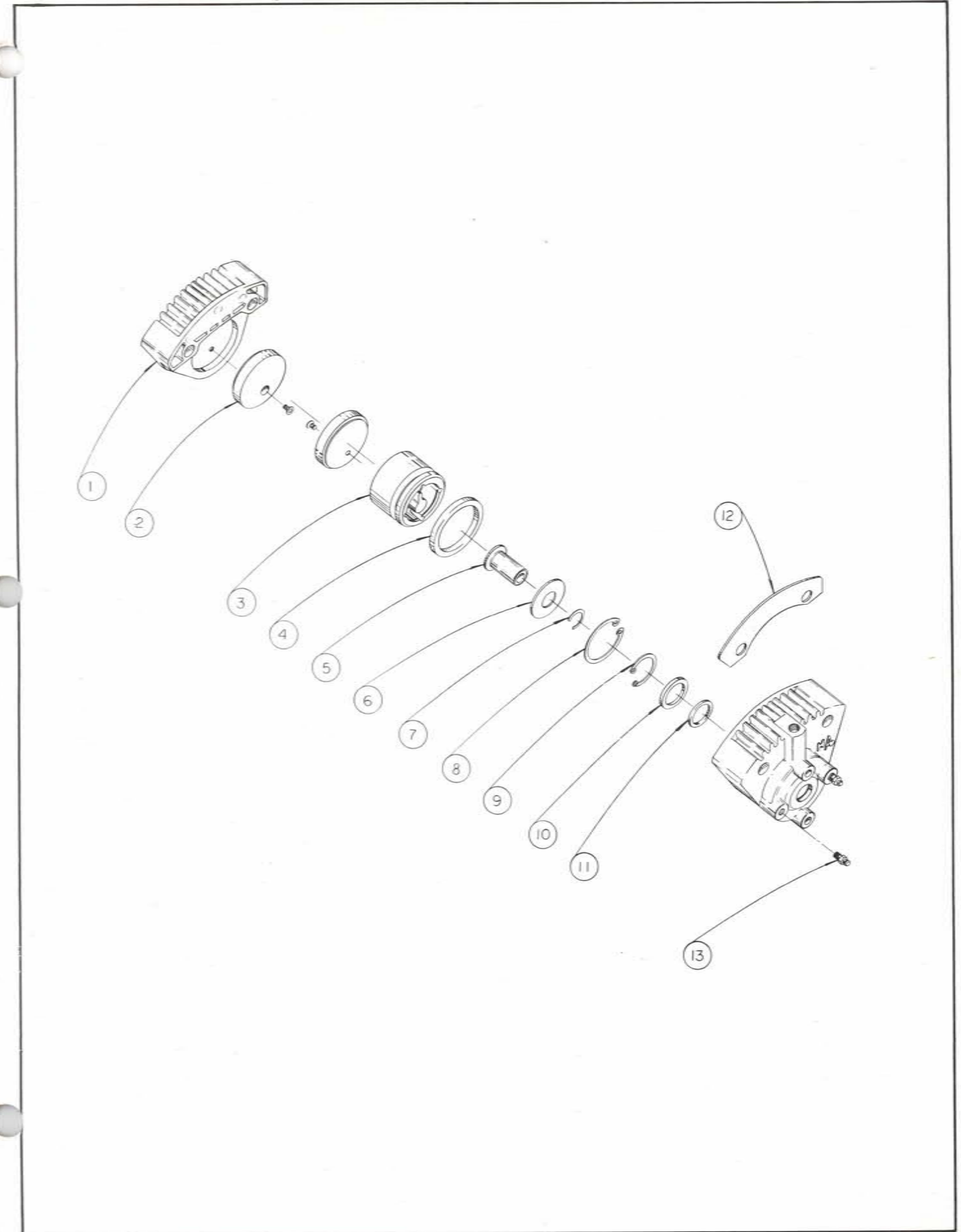
# HURST/AIRHEART MASTER CYLINDER



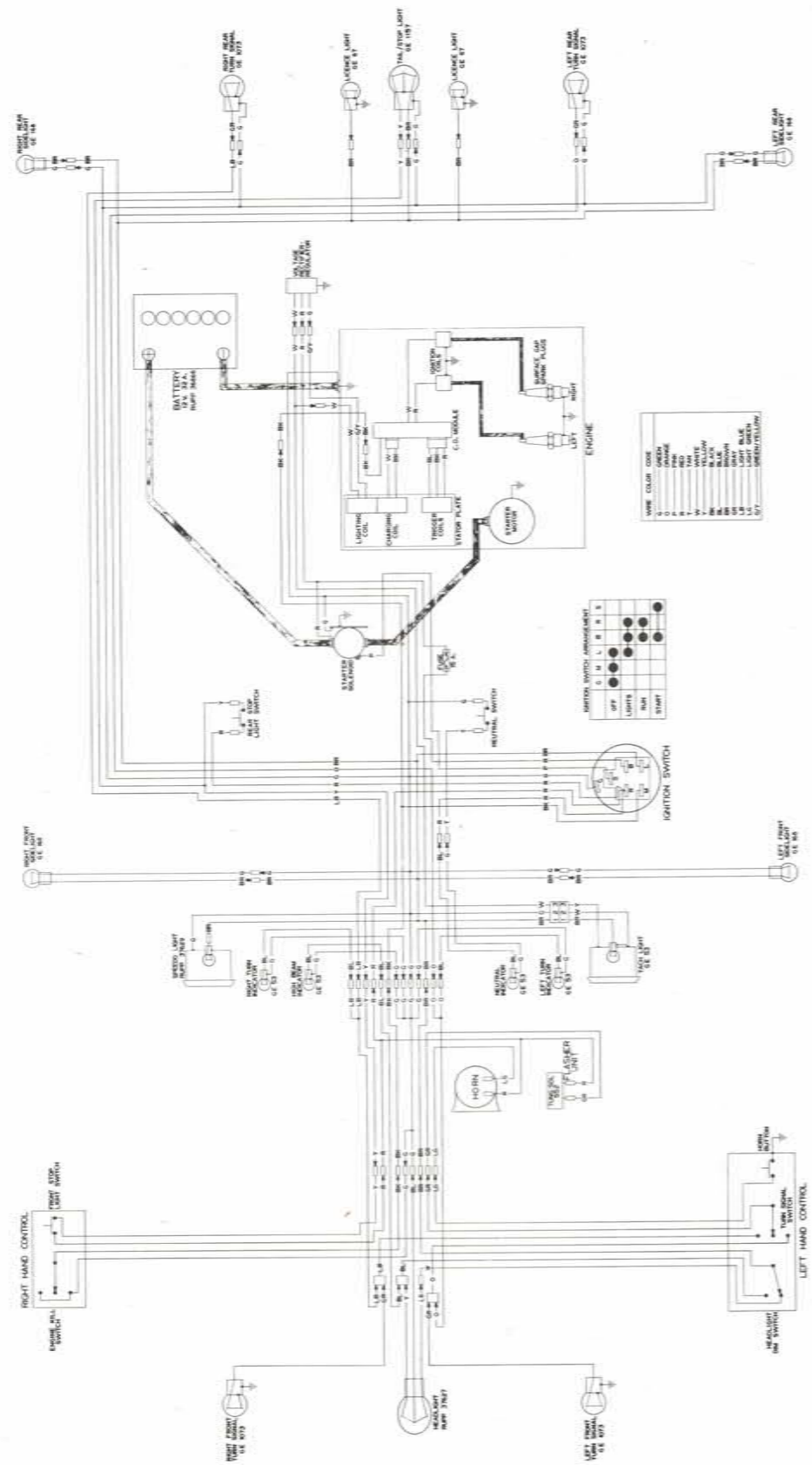
# HURST/AIRHEART BRAKE CALIPER

ITEM NO.	PART NO.	DESCRIPTION	NO. REQ'D.
1	37838	Housing, Anvil	1
2	37693	Puck Ass'y (Includes Screws)	2
3	37882	Piston	1
4	37883	'O' Ring	1
5	37884	Wear Indicator	1
6	37885	Plate	1
7	37886	'C' Ring	1
8	37887	Snap Ring - Piston	1
9	37888	Snap Ring	1
10	37889	Back Up Ring	1
11	37890	'O' Ring Seal	1
12	37891	Shim, Spacer	1
13	37892	Fitting	2
*	37893	Rebuild Kit	

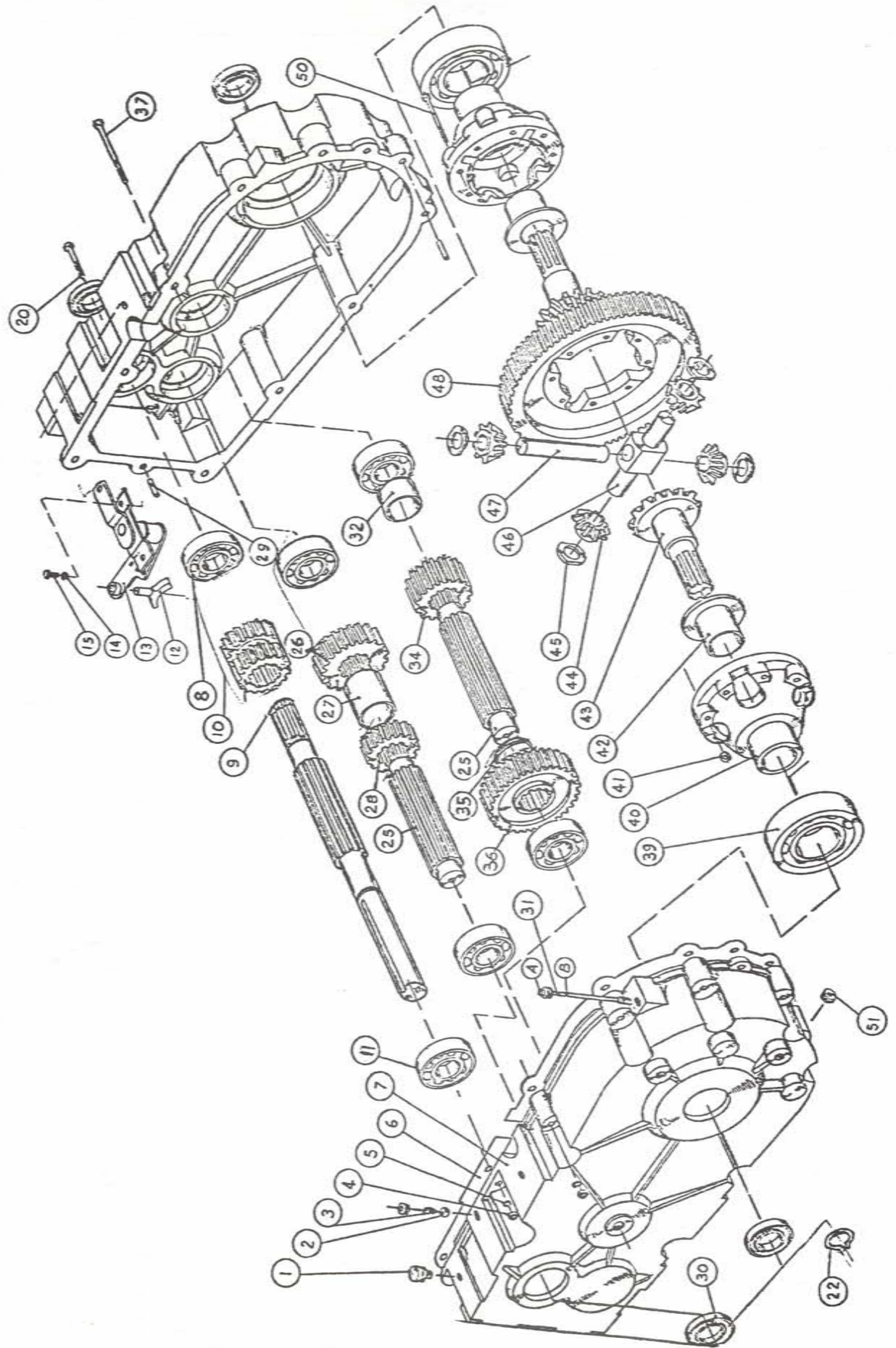
# HURST/AIRHEART BRAKE CALIPER



# WIRING DIAGRAM



# TRANSMISSION



# TRANSMISSION

ITEM NO.	PART NO.	DESCRIPTION	NO. REQ'D.
1	37583	Air Vent	1
2	GM147491	Locker Ball	1
3	37553	Spring Ball	1
4	14024	H/Nut 5/16-18	10
5	14047	L/Washer 5/16	10
6	37554	Case Gasket	1
7	37555	Transmission Case LH & RH	1
8	37584	Ball Bearing	5
9	37557	Shaft Input	1
10	37558	Gear - Transfer 21 TH	1
11	37585	Ball Bearing	1
12	37559	Shifter Fork	1
13	37560	Fork Lever Ass'y	1
14	14047	L/Washer ¼	2
15	GM180073	HHCS 5/16-18 x ½	2
20	GM180081	HHCS 5/16-18 x 1¼	4
22	37582	Snap Ring	1
25	37565	Transmission Shaft	2
26	37566	Gear 30 TH	1
27	37567	Spacer	1
28	37568	Gear 21 TH	1
29	GM103735	Straight Pin	2
30	37569	Oil Seal	4
31	37570	Oil Gauge	1
32	37571	Spacer	1
34	37573	Gear 25 TH	1
35	37574	Spacer	1
36	37575	Gear 45 TH	1
37	GM180091	HHCS 5/16-18 x 2½	6
39	37587	Ball Bearing	2
40	37576	Differential Body	2
41	GM454750	L/Nut ¼-28	8
42	37577	Flanged Bearing	2
43	37578	Bevel Gear 18 TH	2
44	37579	Pinion 12 TH	2
45	37580	Thrust Bearing	2
46	37581	Pinion Axle	1
47	37582	Pinion Pin	1
48	37556	Gear 85 TH	1
50	GM181582	HHCS ¼-28 x 2 5/8	8
51	37586	Plug	2
Ass'y	36849	Transaxle Ass'y	1

## SPECIFICATIONS

### ENGINE

Model	SK-340-2AS Oil Injected
Type	Two Cylinder, Air Cooled, Two cycle
Displacement	339cc
Compression Ratio	7.5:1
Carburetor	Mikuni 32mm
Oil Pump	Mikuni Dual Output
Ignition Type	Capacitor Discharge Ignition
Alternator Output	150 Watts
Ignition Timing	.090 BTDC
Spark Plug	Champion N-19V
Starter	Electric
Air Cleaner	Paper Filter Fram CA-148PL with Special Seal

### CHASSIS

Overall Length	124.5 Inches
Overall Width	60.6 Inches
Overall Height	38 Inches
Wheelbase	90 Inches
Weight	720 lbs Curb Weight
Transmission	Variable Ratio
Differential	Torque Converter with Forward/Neutral/Reverse
Tire Size	Automotive Type
	3.25/3.50-16 Front
	B60-13 Rear
Front Suspension	Leading Link with Adjustable Shock
Front Brake	Internal Expanding
Rear Brake	Dual Inboard Hydraulic Disc
Fuel Tank Capacity	10 Gallons
Oil Tank Capacity	3 Quarts