

RUPP
■ Only The Best

1975
CHASSIS
PARTS LIST

CENTAUR 
TWO SEATER



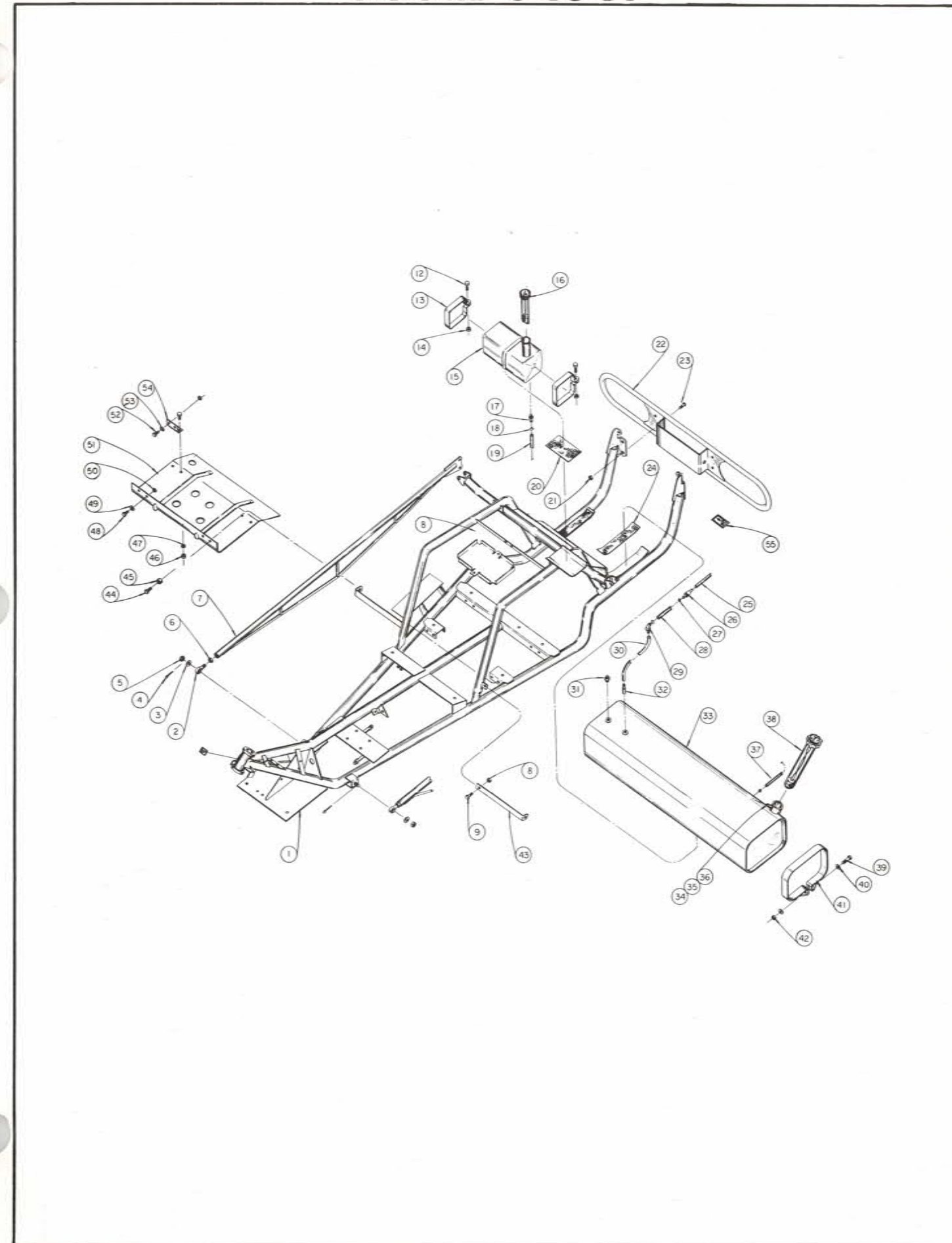
RUPP
■ Only The Best

FRAME GROUP

ITEM NO.	PART NO.	DESCRIPTION	NO. REQ'D.
1	38029	Frame Weld Ass'y	1
2	36854	Rod End	2
3	30424	F/Washer 1/2	2
4	14091	Cotter Pin 1/8 x 1 1/4	2
5	14208	Hex Slt. Nut 1/2-20	2
6	14093	Jam Nut (Thin Ht.) 1/2-20	2
7	37193	Radius Rod W/A	2
8	14029	C/Lock Nut 5/16-18	2
9	14729	H.H.C.S. 5/16-18 x 3/4	2
12	GM180024	H.H.C.S. 1/4-20 x 1 1/4	2
13	37312	Strap - Oil Reservoir	2
14	14028	C/Lock Nut 1/4-20	2
15	37225	Oil Reservoir	1
16	37286	Gauge - Oil	1
17	37455	Connector - Hose	1
18	37945	Clamp - Hose	2
19	37449	Line - Oil (2 Ft.)	as req'd
20	37152	Cork (Oil Reservoir)	1
21	14029	C/Lock Nut 5/16-18	4
22	37095	Bumper - Rear	1
23	GM455999	Carriage Bolt 5/16-18 x 5/8	4
24	37152	Cork (Fuel Tank)	2
25	16150 *	Fuel Line (Filter to Pump) 15 In.	as req'd
26	19127	Fuel Filter	1
27	32164	Clamp F/Line	7
28	16150 *	Fuel Line (Filter to Tank) 24 In.	as req'd
29	31876	Fitting 3/8 NPT	1
30	16150 *	Fuel Line (Fitting to Pick-up) 8 In.	as req'd
31	14829	Pipe Plug 3/8	1
32	37200	Fuel Pick-up	1
33	37291	Fuel Tank	1
34	30566	Hose Fitting 1/8	1
35	30567	Gasket - Fitting	1
36	14343	Hex Nut 10-32	1
37	30568	Vent Line 12 In.	as req'd
38	37087	Gauge - Fuel	1
39	15011	H.H.C.S. 1/4-28 x 1 1/2	2
40	14037	F/Washer 1/4	4
41	37226	Strap Hold Down	2
42	14027	C/Lock Nut 1/4-28	2
43	37338	Supt. Brk't Side	2
44	GM180081	H.H.C.S. 5/16-18 x 1 1/4	2
45	37417	Spacer	2
46	14028	C/Lock Nut 1/4-20	8
47	14038	F/Washer 1/4	4
48	14729	H.H.C.S. 5/16-18 x 3/4	2
49	14039	F/Washer 5/16	2
50	14029	C/Lock Nut 5/16-18	4
51	37635	Stone Guard	1
52	GM180018	H.H.C.S. 1/4-20 x 5/8	8
53	14045	Star Washer	2
54	37690	Brk't Stone Guard	2
55	37896	Decal - Oil Fill	1

ORDER BY LENGTH IN FOOT INCREMENTS

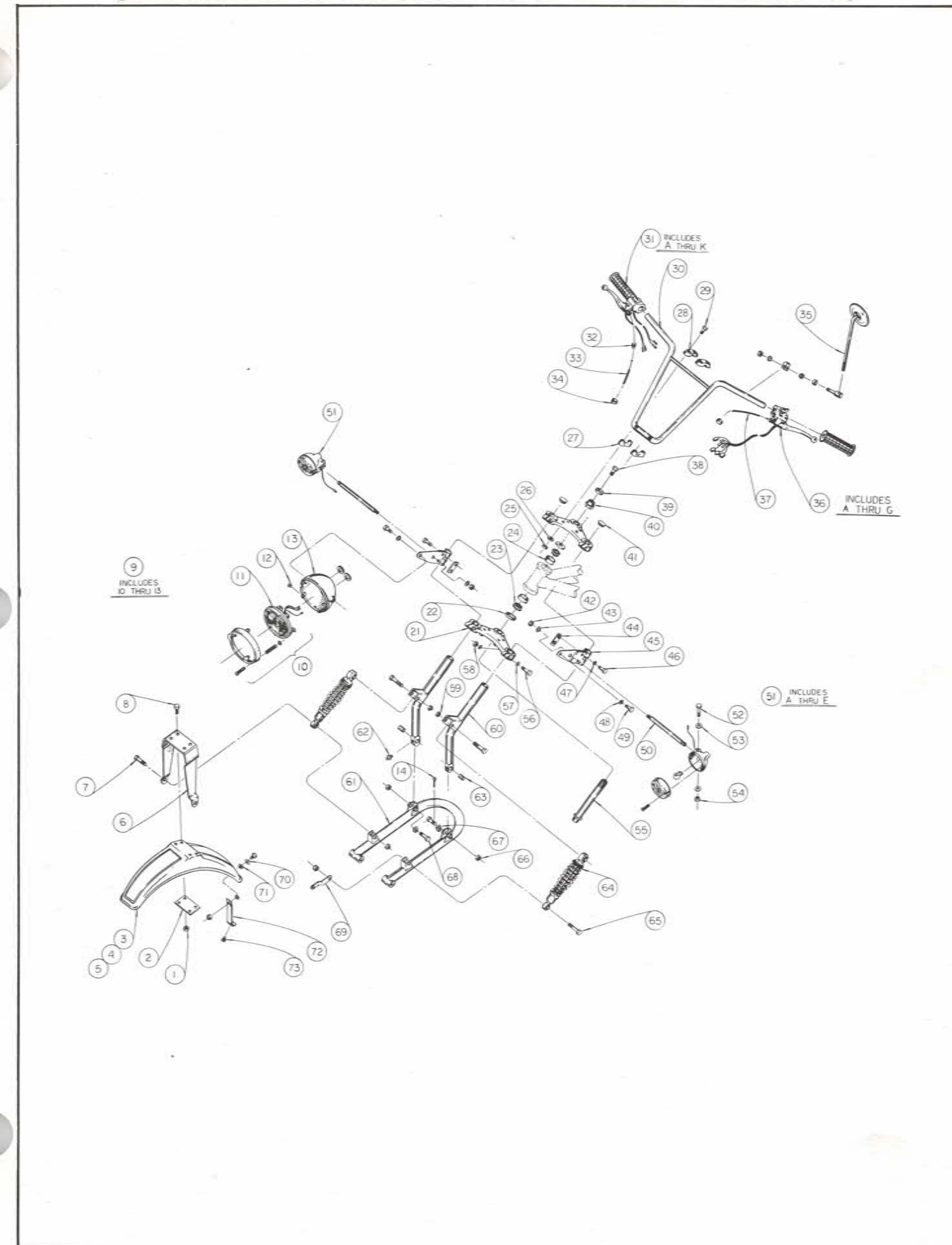
FRAME GROUP



STEERING & FRONT SUSPENSION GROUP

ITEM NO.	PART NO.	DESCRIPTION	NO. REQ'D.
1	14027	C/Lock Nut 1/4-28	5
2	37469	Fender - Reinf.	1
3	38015	Fender - Red	1
	38016	Fender - Blue	1
	38017	Fender - Yellow	1
	38018	Fender - White	1
4	37368	Decal - FR	1
5	37369	Decal - RR	1
6	37460	Fender Strap	1
7	GM180130	H.H.C.S. 3/8-16 x 2	3
8	GM455144	P.H.C.R.M.S. 1/4 -28 x 5/8	5
9	36864	Headlight Ass'y. (Incl. 10 thru 12)	1
10	37626	Rim Ass'y	1
11	37627	Sealed Beam	1
12	32609	Bezel Screw	2
13	37628	Housing	1
14	14091	Cotter Pin 1/8 x 1 1/4	2
21	36840	Yoke - Strg. Col	2
22	32833	Seal - Nilos. Ring	2
23	16984	Cone Brg. - LM 11949	2
24	16985	Cup Brg. - LM 11910	2
25	14027	C/Lock Nut 1/4-28	4
26	GM9414920	F/Washer 1/4	4
27	33124	Base H/Bar	2
28	33125	Clamp H/Bar	2
29	GM181583	HHCS 1/4-28 x 3	4
30	37139	Handlebar	1
31	36894	R.H. Control (Incl. A thru L)	1
31A	37650	Twist Grip Ass'y	1
31B	37651	Brake Lever	1
31C	37703	Shoulder Bolt	1
31D	14080	F/Washer 3/16	1
31E	GM125774	Int. T. L/Washer No. 12	1
31F	15166	Hex Nut 5mm	1
31G	37653	Adjuster - Cable (Comp.)	1
31H	37654	Brake Switch Ass'y	1
31J	37705	P.H.C.R.M.S. W/L. Washer 3mm	1
31K	37704	Soc HD. Cap SCR. 5mm x 10mm	1
32	37479	Seal - Cable	1
33	37323	Throttle Cable	1
34	30005	Cable Clip	4
35	37402	RR View Mirror (Comp.)	2
36	36893	LH Control (Incl. A thru H)	1
36A	37657	Hand Grip	1
36B	37652	Clutch Lever	1
36C	37703	Shoulder Bolt	1
36D	14080	F/Washer 3/16	1
36E	GM125774	Int. T. L/Washer No. 12	1
36F	15166	Hex Nut 5mm	1
36G	37653	Adjuster - Cable (Comp.)	1
36H	37704	Soc. Hd. C. Scr. 5mm x 10mm	1
37	37457	Cable - Clutch	1
38	GM181643	H.H.C.S. 3/8-24 x 1 1/2	1
38A	14048	L/Washer 3/8	1
39	32832	Washer S/Col.	1
40	32734	Bushing Upr. S/Col.	1
41	37214	Plug - Button	2
42	GM9414213	L/Nut W/I 7/16-20	2
43	14081	F/Washer 7/16	2
44	30849	Spot Weld Nut	2
45	37175	H/Light Brk't	2
46	GM180020	H.H.C.S. 1/4-20 x 1/4	4

STEERING & FRONT SUSPENSION GROUP



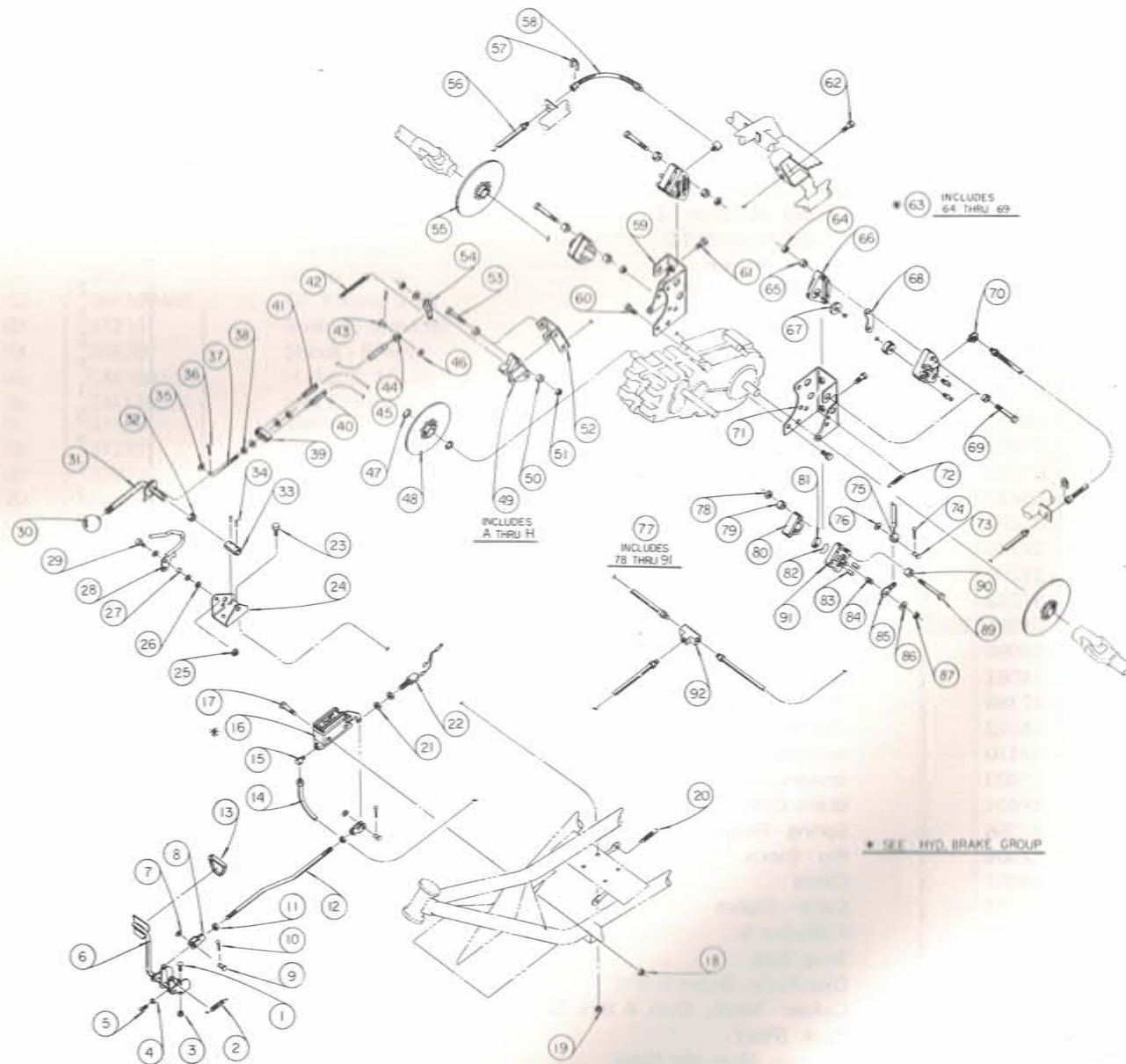
STEERING & FRONT SUSPENSION GROUP

ITEM NO.	PART NO.	DESCRIPTION	NO. REQ'D.
47	14037	F/Washer ¼	4
48	14076	L/Washer 7/16	2
49	37531	H.H.C.S. 10 mm x 14 mm	2
50	37176	T.S. Mtg. Arm	2
51	36865	Turn Sig. Lamp Ass'y (Incl. A thru E)	2
51A	37658	Housing Ass'y	1
51B	37659	Lens - Amber	1
51C	37660	Gasket	1
51D	37702	P.H.CR.M.S. 4 mm x 28 mm	2
51E	36869	Bulb GE No. 1073	1
52	GM181573	H.H.C.S. ¼-28 x 1¼	2
53	14037	F/Washer ¼	4
54	14027	C/Lock Nut ¼-28	2
55	33105	Bolt Strg. Col.	1
56	33297	H.S.H.C.S. 5/16-24 x 2	12
57	12477	F/Washer 21/64 I.D.	24
58	GM190139	Lock Nut 5/16-24	12
59	GM456004	Lock Nut 3/8-16	4
60	37023	Front Strut	2
61	36962	Swing Frame	1
62	GM109459	Gr. Fitting ¼-28	2
63	37211	Bushing (Bronze)	2
64	36839	Shock - Front	2
65	GM180132	H.H.C.S. 3/8-16 x 2¼	1
66	GM125251	Hex Slot. Nut ½-20	2
67	37409	Washer - Spec.	2
68	37212	H.H.C.S. ½-20 x 2 3/8	2
69	37014	Keeper Brake	1
70	GM9414920	F/Washer ¼	1
71	33279	Washer - Rubber	2
72	37462	Fender Strap	1
73	14019	H.H.S.T.S. ¼ x ½ Lg.	1

BRAKE GROUP

ITEM NO.	PART NO.	DESCRIPTION	NO. REQ'D.
1	14729	H.H.C.S. 5/16-18 x ¾	2
2	18948	Spring - Return	1
3	14029	C/Lock Nut 5/16-18	2
4	14023	Hex Nut ¼-20	1
5	GM180024	H.H.C.S. ¼-20 x 1¼	1
6	37270	Brake W/A Foot	1
7	14080	F/Washer ¼	2
8	10055	Clevis	2
9	10075	Pin - Clevis	2
10	14049	Cotter Pin	2
11	14023	Hex Nut ¼-20	2
12	37272	Tie Rod	1
13	37412	Pad - Foot	1
14	37423	Hyd. Brake Tube 30 In.	1
15	37420	½ Union Ell	1
16	37777	Master Cylinder	1
17	GM180087	H.H.C.S. 5/16-18 x 2	2
18	14029	C/Lock Nut 5/16-18	2
19	14031	C/Lock Nut 3/8-16	2
20	18948	Spring - Return	1
21	14093	Hex Jam Nut ½-20	2
22	37273	Stoplight Switch	1
23	GM180122	H.H.C.S. 3/8-16 x 1	2
24	37231	Brk't - Lever Mtg.	1
25	14027	C/Lock Nut ¼-28	1
26	GM9422770	F/Washer ¼	3
27	31680	Actuating Bushing	1
28	37253	Release Arm	1
29	GM181566	H.H.C.S. ¼-28 x ¾	1
30	37290	Knob	1
31	37248	Parking Lever	1
32	37299	Spacer - Parking Brake	1
33	37242	Carrier	1
34	GM9413573	Spirol Pin 3/16 Dia x ¾ Lg.	2
35	14080	F/Washer ¼	3
36	14051	Cotter Pin 3/32 x ½	2
37	37288	Rod - Adjusting	1
38	14022	Hex Nut ¼-28	2
39	10170	Adaptor Cable	1
40	37403	Brake Cable LH	1
41	37404	Brake Cable RH	1
42	32356	Spring - Return	1
43	12404	Pin - Clevis	1
44	34687	Clevis	1
45	37457	Cable - Clutch	1
46	14080	F/Washer ¼	1
47	37586	Snap Ring	2
48	37707	Disc Ass'y (Input Shaft)	1
49	37227	Caliper - Mech. (Incl. A thru J)	1
49A	37710	Puck (Pair)	1
49B	37713	Housing (Actuator Side)	1
49C	37714	Anvil	1
49D	37711	Back up washer	1
49E	13728	Push Pin	2
49F	13798	Spring	1
49G	GM9418924	F/Washer 5/16	1
49H	14055	C/Lock Nut 5/16-24	1
50	37715	Spacer - Brake	4
51	14029	C/Lock Nut 5/16-18	2
52	37716	Brk't - Brake	1
53	GM122085	H.H.C.S. 5/16-18 x 2¼	2
54	13628	Brake Arm	1

BRAKE GROUP



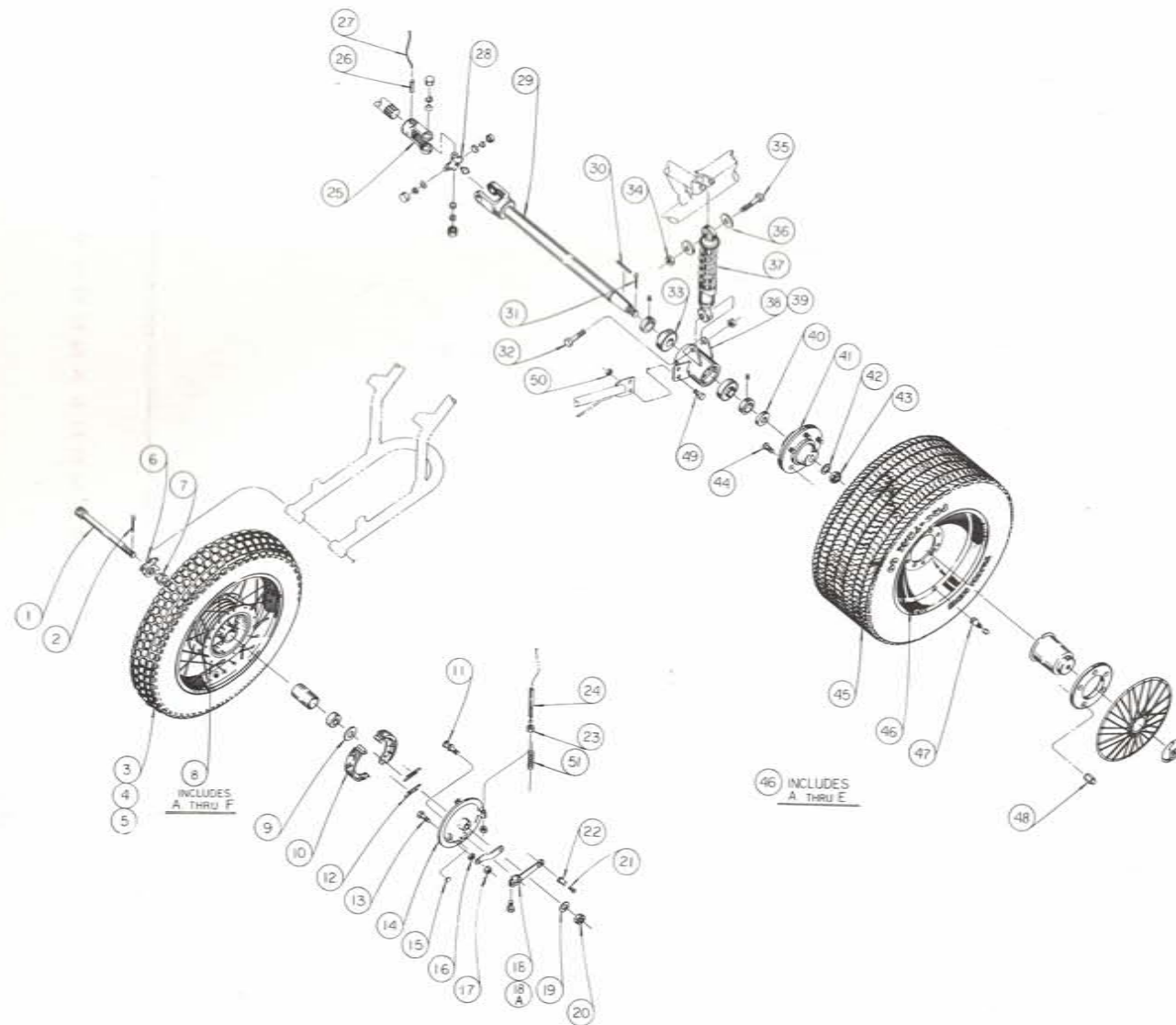
BRAKE GROUP

ITEM NO.	PART NO.	DESCRIPTION	NO. REQ'D.
55	37708	Disc Ass'y (Rear Axle)	2
56	37422	Hyd. Brake Tube 41 In.	2
57	37470	Hose Clip	2
58	37421	Hose - Brake	2
59	37188	Tr. Brake Mtg. Ass'y RH	1
60	14190	H.F.W.L.S. 3/8-16 x 5/8	6
61	14192	H.F.W.L.S. 3/8-16 x 3/4	8
62	14011	H.F.W.L.S. 5/16-18 x 1/2	4
63	37694	Caliper Ass'y Hyd. (Incl. 64 thru 69)	2
64	14030	C/Lock Nut 3/8-24	4
65	37183	Bushing	8
66	37692	Housing Ass'y	2
67	37693	Liner W/Screws (Kit) Secure W/Loctite	2
68	37182	Spacer	2
69	GM187044	H.H.C.S. 3/8-24 x 3 1/2	4
70	37418	90° Street Ell	2
71	37187	TR. Brake Mtg. Ass'y LH	1
72	18948	Spring - Return	2
73	12404	Pin - Clevis	2
74	14051	Cotter Pin 3/32 x 1/2	2
75	34687	Clevis	2
76	14080	F/Washer 1/4	2
77	37228	Caliper Ass'y Mech. (Comp.) Incl. 78 thru 91	2
78	14055	C/Lock Nut 5/16-24	4
79	37185	Spacer	4
80	37714	Anvil	2
81	37710	Pucks (Pair)	2
82	37711	Back up Washer	2
83	13728	Push Pins	4
84	13798	Spring	2
85	37712	Brake Arm	2
86	GM9418924	F/Washer 5/16	2
87	14055	C/Lock Nut 5/16-24	2
89	GM189323	H.H.C.S. 5/16-24 x 3 1/2	4
90	37249	Spacer Lg.	4
91	37713	Housing (Actuator Side)	2
92	37419	Flared Tee	1

* SEE HYDRAULIC BRAKE GROUP FOR REPLACEMENT PARTS LISTING

WHEELS & REAR SUSPENSION GROUP

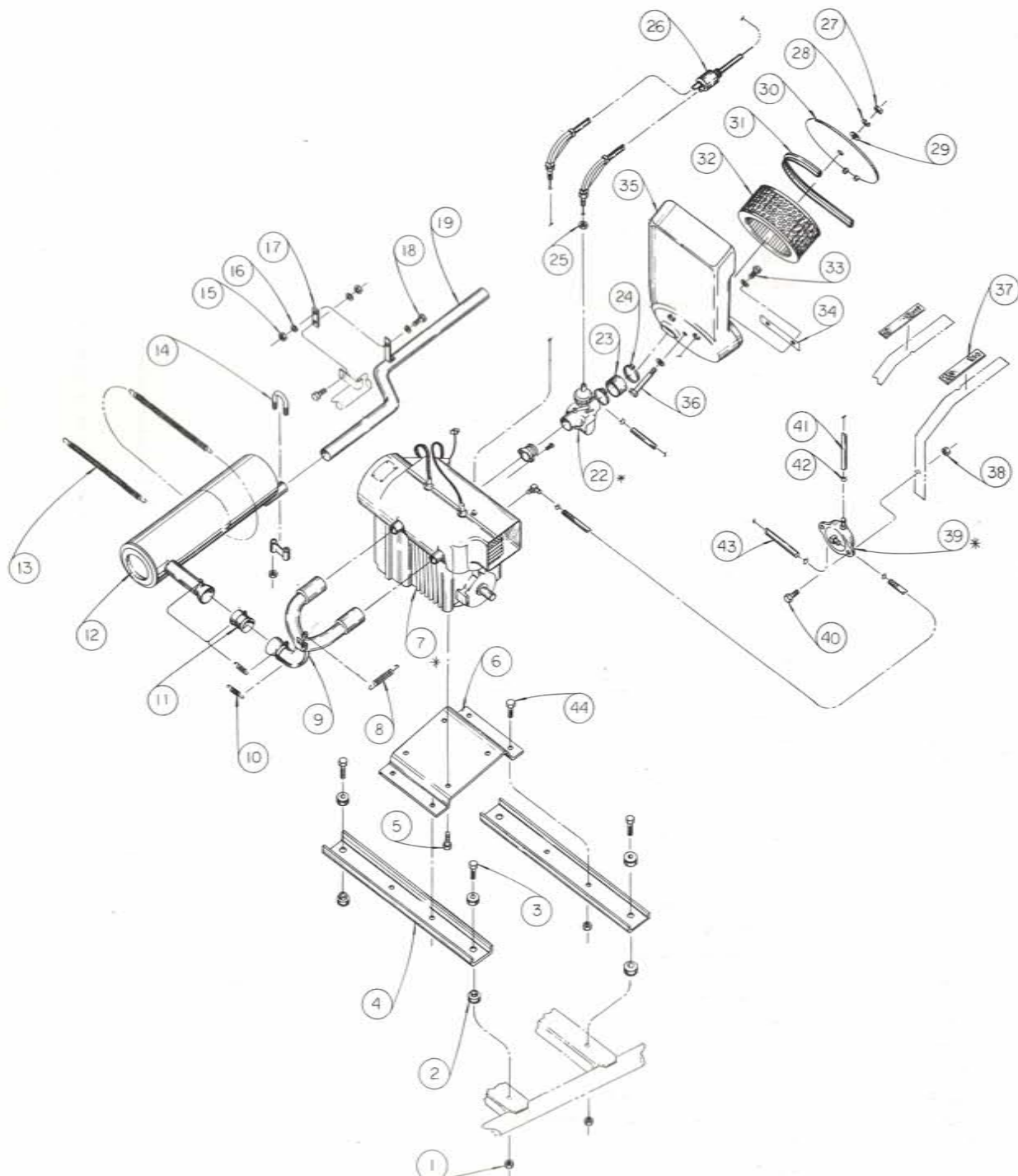
WHEELS & REAR SUSPENSION GROUP



ITEM NO.	PART NO.	DESCRIPTION	NO. REQ'D.
1	36999	Front Axle	1
2	14091	Cotter Pin 1/8 x 1 1/4	1
3	36842	Tire FR. No. 3.25 x 16	1
4	36843	Tube	1
5	30607	Rim Strip	1
6	30795	Speedometer Drive	1
7	37235	Speedometer Bush.	1
8	36841	Wheel - Front Ass'y (Incl. A thru F)	1
8A	32853	Rim	1
8B	37616	Spoke	36
8C	15589	Nipple	36
8D	37524	Hub - Front	1
8E	37617	Bearing - Spanner	1
8F	18368	Bearing - 15mm	2
9	37689	Washer - Felt	1
10	37686	Brake Shoes - 140mm (Pair)	1
11	37687	Cam	1
12	37688	Springs	2
13	15062	H.H.C.S. 10mm x 35mm	1
14	37523	Backing Plate	1
15	37500	Plug	2
16	37734	Jam Nut (Thin Ht.) 10mm	1
17	37733	W. Ins. Hex L/Nut 10mm	1
18	37525	Actuating Arm	1
18A	37737	H.H.C.S. 6mm x 25mm	1
19	GM121458	F/Washer 9/16	1
20	GM125259	Hex Slt. Nut 9/16-18	1
21	14016	H.H.M.S. No. 8-32 x 5/16	1
22	37520	Swivel	1
23	GM124920	Jam Nut 5/16-24	2
24	37448	FR. Brake Cable	1
25	37666	Yoke - Splined End	2
26	GM455248	Spirol Pin 1/4 x 1 1/4	2
27	37668	Safety Wire 7 1/2 In. Lg.	2
28	37667	Center Kit (Rockwell No. CPL-6N-30)	2
29	37213	Axle - Rear Ass'y	2
30	12238	Key 1/4 x 1/4 x 2	2
31	GM137204	Cotter Pin 1/8 x 1 1/2	2
32	16618	H.H.C.S. 7/16-20 x 2	2
33	15979	Bearing	4
34	14058	C/Lock Nut 7/16-20	4
35	GM181675	H.H.C.S. 7/16-20 x 2 1/4	2
36	37131	Spacer - Shock	4
37	37427	Rear Shock Ass'y	2
38	37091	LH. Brg. Housing	1
39	37092	R.H. Brg. Housing	1
40	37220	Spacer RR/Axle	2
41	37425	Rear Hub Ass'y	2
42	14082	F/Washer 3/4	2
43	GM9429121	Hex Slt. Nut 3/4-16	2
44	37174	Wheel Bolt 1/2-20	10
45	36856	Rear Tire No. B60-13	2
46	36857	Rim Ass'y Rear (Incl. A thru E)	2
46A	37526	Rim	1
46B	37527	Ring - Retainer	1
46C	37528	Dust Cover	1
46D	37529	Spoke Wheel Cover	1
46E	37530	Hub Cover	1
47	37058	Valve Stem	2
48	36858	Lug Nut 1/2-20	10
49	GM454904	H.H.C.S. 3/8-16 x 3/4	4
50	GM9416578	C/Lock Nut 3/8-16	4
51	37837	Return Spring	4

ENGINE, CARBURETION & EXHAUST GROUP

ENGINE, CARBURETION & EXHAUST GROUP



ITEM NO.	PART NO.	DESCRIPTION	NO. REQ'D.
1	14031	C/Lock Nut 3/8-16	8
2	34782	Motor Mtg. Ass'y	4
3	GM180130	H.H.C.S. 3/8-16 x 2	4
4	37073	Support Mtr./Mtg.	2
5	37905	H.F.W.L.S. 3/8-16 x 1	4
6	37018	Mount - Motor	1
7	25245 *	Engine - 340 2AS	1
8	37004	Spring - Manifold	1
9	36883	Manifold - Exhaust	1
10	37003	Spring - B/Joint	4
11	36884	Ball Joint - Center	1
12	36882	Muffler	1
13	32356	Spring - Mtg. Muffler	2
14	36680	Clamp Ass'y	1
15	14029	C/Lock Nut 5/16-18	2
16	GM446363	F/Washer 5/16	2
17	37458	Mtg. Strap	1
18	GM180079	H.H.C.S. 5/16-18 x 1	2
19	37307	Exhaust Pipe	1
22	36877 *	Carburetor	1
23	37496	Adapter - Air Box	1
24	15061	Tie Strap - Nylon	2
25	34843	Hex Nut 6mm	2
26	37323	Throttle Cable Ass'y	1
27	14024	Hex Nut 5/16-18	1
28	14047	L/Washer	3
29	GM9418924	F/Washer	2
30	37480	Cover - Air Box	1
31	37741	Seal - Air Box Upper	1
31A	37749	Seal - Air Box Lower (Not Shown)	1
32	37773	Filter Kit Incl. 31 & 31A (Fram CA 148 PL)	1
33	GM180079	H.H.C.S. 5/16-18 x 1	2
34	37482	Keeper - Air Box	1
35	37700	Air Box Ass'y	1
36	GM178429	H.H.C.S. 5/16-18 x 4	1
37	19731	Supt. Cushion 4 In. Lg.	2
38	14028	C/Lock Nut 1/4-20	2
39	37059 *	Fuel Pump	1
40	14503	H.H.C.S. 1/4-20 x 7/8	2
41	16150 Δ	Fuel Line (Pump to Filter) 15 In. Lg.	as req'd
42	32164	Clamp - Fuel Line	5
43	16150 Δ	Fuel Line (Pump to Carb.) 10 In. Lg.	as req'd
44	GM180124	H.H.C.S. 3/8-16 x 1 1/4	4
45	37898	Spacer	

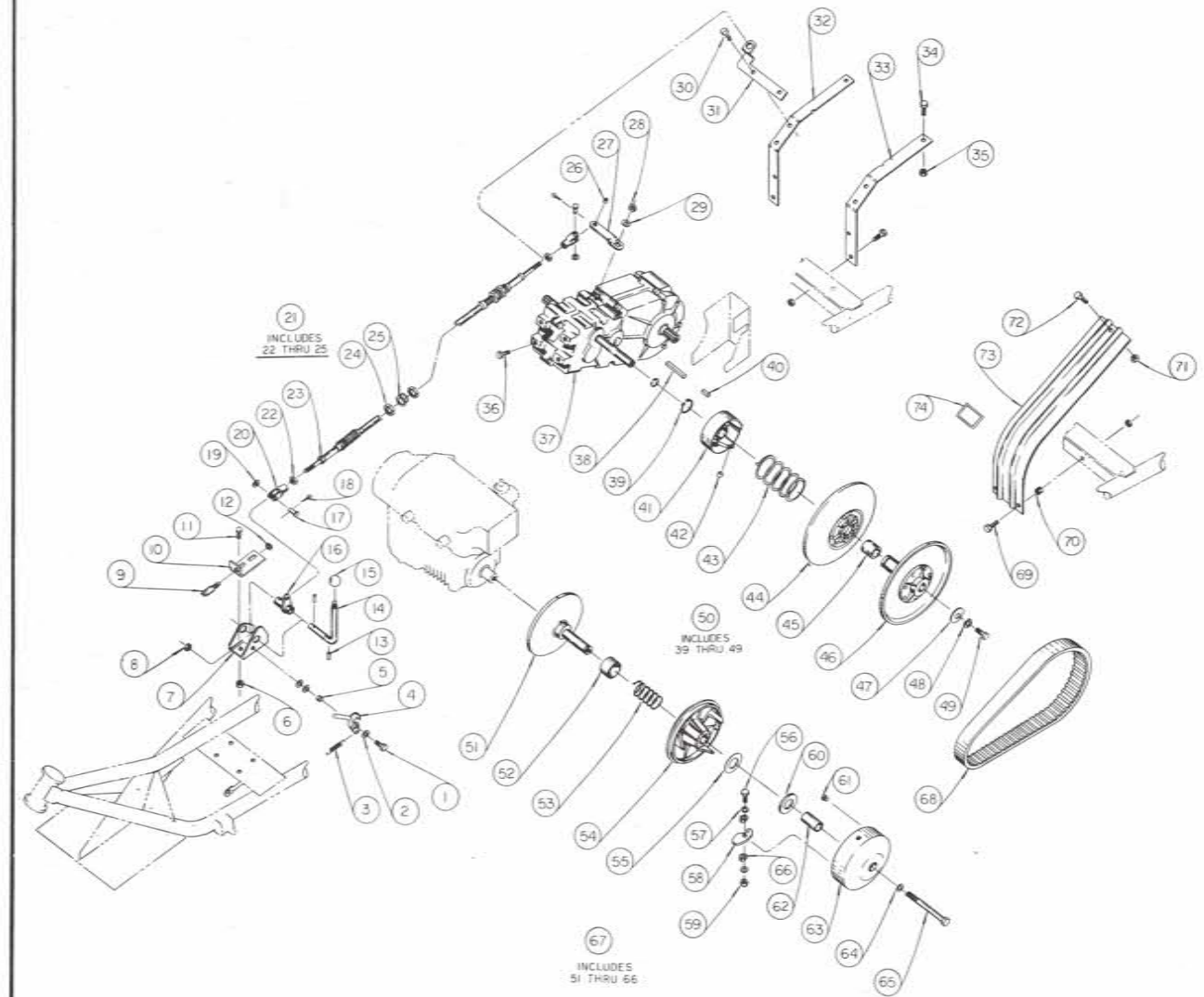
Δ ORDER BY LENGTH IN FOOT INCREMENTS
 * SEE ENGINE PARTS MANUAL FOR REPLACEMENT PARTS

T.C. & TRANS. DRIVE GROUP

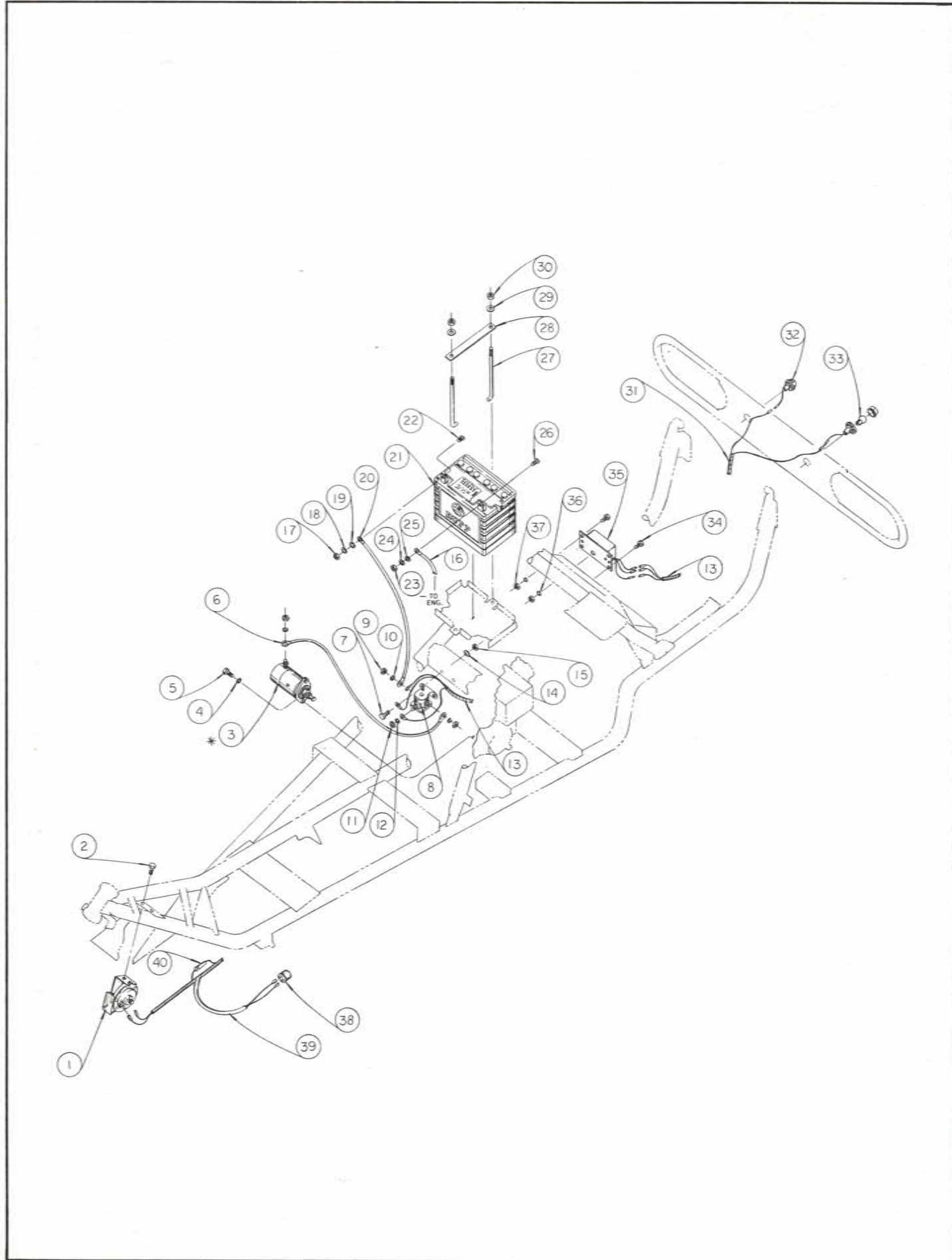
ITEM NO.	PART NO.	DESCRIPTION	NO. REQ'D.
1	GM181566	H.H.C.S. ¼-28 x ¾	1
2	GM9422770	F/Washer ¼	3
3	37510	Spring - Return	1
4	37241	Shift Release	1
5	31680	Act. Bushing	1
6	14031	C/Lock Nut 3/8-16	2
7	37231	Brk't - Lever Mtg.	1
8	14027	C/Lock Nut ¼-28	1
9	37273	Neutral Switch	1
10	37611	Brk't Neutral Sw.	1
11	GM180122	H.H.C.S. 3/8-16 x 1	2
12	14093	Hex Jam Nut ½-20	2
13	GM9413573	Spirol Pin 3/16 x ¾ Lg.	3
14	37238	Shift Lever	1
15	37290	Knob	1
16	37244	Shift Arm	1
17	10075	Pin Clevis	2
18	14049	Cotter Pin	2
19	14080	F/Washer ¼	2
20	10055	Clevis	2
21	37282	Shifter Cable Ass'y	1
22	GM120613	Hex Nut ¼-28	2
23	37479	Seal	2
24	14025	Hex Nut 5/8-18	4
25	37663	Beveled Washer	4
26	37440	Spacer - Shift Arm	1
27	37561	Shift Arm - Trans.	1
28	GM9419455	Lock Nut	1
29	GM446363	F/Washer 5/16	1
30	30494	H.F.W.L.S. 3/8-16 x 1	2
31	37329	Brk't - Shift Cable	1
32	37306	Trans. Mtg. RH	1
33	37305	Trans. Mtg. LH	1
34	GM180120	H.H.C.S. 3/8-16 x ¾	4
35	14031	C/Lock Nut 3/8-16	4
36	14192	H.F.W.L.S. 3/8-16 x ¾	2
37	36849	Transaxle	1
38	17221	Key ¼ x ¼ x 4¼	1
39	37552	Retaining Ring	1
40	17237	Key ¼ x ¼ x ¾	1
41	37548	Driven Cam Ass'y	1
42	37549	Sliding Shoe	3
43	37547	Spring - Driven	1
44	37545	Sliding Half	1
45	37546	Bushing	1
46	37544	Fixed Half	1
47	15969	F/Washer 15/32 ID. x 1½ OD.	1
48	14048	L/Washer 3/8	1
49	GM180120	H.H.C.S. 3/8-16 x ¾	1
50	36861	Driven T.C. Ass'y	1
51	37532	Fixed Pulley	1
52	37533	Fixed Center	1
53	37534	Spring	1
54	37535	Sliding Half Ass'y	1
55	37538	Pad Spacer	1
56	14616	H.H.C.S. 5/16-18 x 1½	3
57	37537	Tension Washer	6
58	37542	Counter Weight	3
59	GM9419455	Nylock Nut 5/16-18	3
60	37539	Wear Pad	1
61	37540	Sliding Shoe	3
62	37536	Bushing	1

T.C. & TRANS. DRIVE GROUP

ITEM NO.	PART NO.	DESCRIPTION	NO. REQ'D.
63	37541	Drive Cover	1
64	30153	Washer	1
65	GM9430821	H.H.C.S. ½-20 x 5	1
66	37543	Counter Weight Bush.	3
67	36860	Drive T.C. Ass'y (Incl. 51 thru 66)	1
68	37277	Belt T.C.	1
69	GM180081	H.H.L.S. 5/16-18 x 1¼	2
70	37417	Spacer	2
71	14029	C/Lock Nut 5/16-18	3
72	GM179812	H.H.C.S. 5/16-18 x ½	1
73	37393	Guard - T.C.	1
74	15287	Decal - Caution	1



ELECTRICAL GROUP

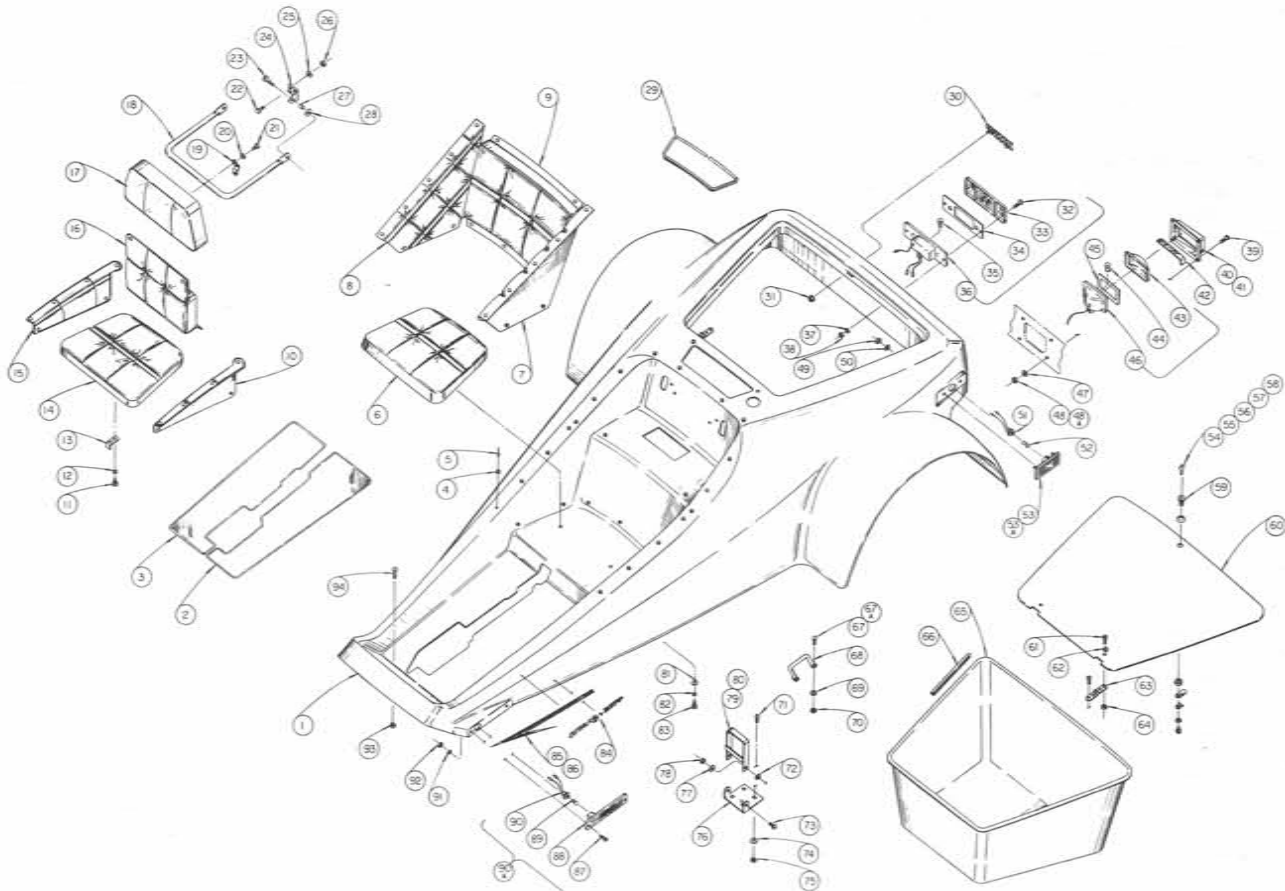


ELECTRICAL GROUP

ITEM NO.	PART NO.	DESCRIPTION	NO. REQ'D.
1	36867	Horn 12-V	1
2	14011	H.F.W.L.S. 5/16-18 x 1/2	1
3	36876	Motor - Electrical Start	1
4	14047	L/Washer 5/16	2
5	GM180079	H.H.C.S. 5/16-18 x 1	2
6	37612	Cable (Sol. to Starter)	1
7	GM180018	H.H.C.S. 1/4-20 x 5/8	8
8	36620	Solenoid Starter	1
9	GM124920	Hex Jam Nut 5/16-24	4
10	14047	L/Washer 5/16	4
11	14343	Hex Nut No. 10-32	2
12	14043	L/Washer No. 10	2
13	37485	Harness - Frame	1
14	14045	Star Washer	2
15	14028	C/Lock Nut 1/4-20	8
16	37613	Cable (Batt. Neg. to Eng.)	1
17	14024	Hex Nut 5/16-18	1
18	14047	L/Washer 5/16	1
19	GM446363	F/Washer 5/16	1
20	37614	Cable (Batt. Pos. to Sol.)	1
21	36866	Battery 12-V	1
22	14312	Carr. Bolt 5/16-18 x 3/4	1
23	14023	Hex Nut 1/4-20	1
24	14044	L/Washer 1/4	1
25	14037	F/Washer 1/4	1
26	GM120518	Carr. Bolt 1/4-20 x 3/4	1
27	37170	Rod - Tie Down	2
28	37167	Battery H/Down	1
29	14038	F/Washer 1/4	2
30	14028	C/Lock Nut 1/4-20	2
31	37484	Harness Body	1
32	36892	License III. Ass'y (Incl. No. 33)	2
33	37669	Bulb GE No 67	2
34	14116	T.H.P.M.S. No. 10-32 x 3/4	2
35	37155	Rectifier & Regulator	1
36	14502	Star Washer	2
37	15021	C/Lock Nut No. 10-32	2
38	36868	Flasher Unit	1
39	37483	Harness - Front Fork	1
40	GM120151	Fuse No.	1

* SEE ENGINE PARTS MANUAL FOR REPLACEMENT PARTS

BODY & LIGHTING GROUP

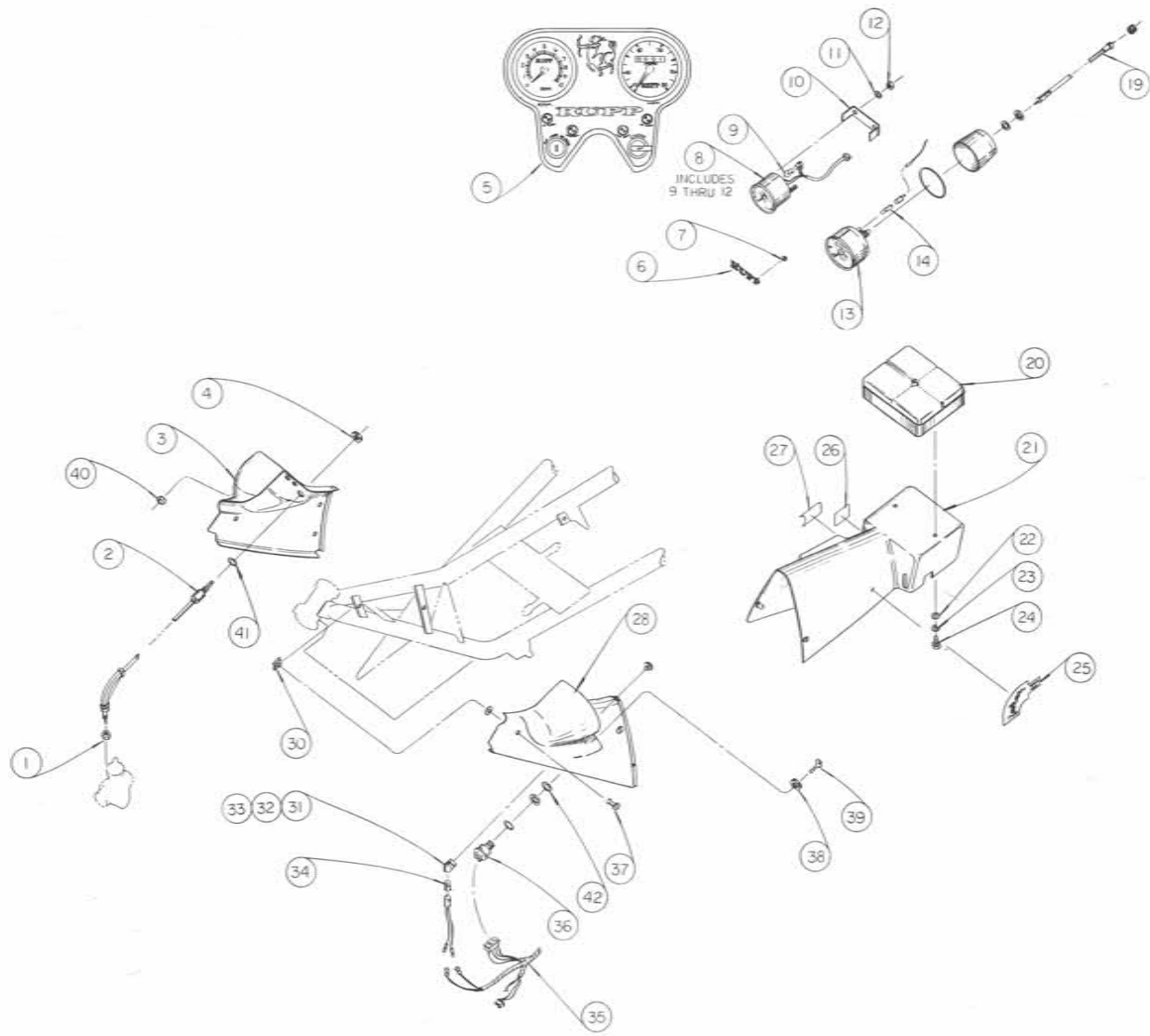


ITEM NO.	PART NO.	DESCRIPTION	NO. REQ'D
1	37998	Body - Centaur - Red	1
	37999	Body - Centaur - Blue	1
	38000	Body - Centaur - Yellow	1
	38001	Body - Centaur - White	1
2	37376	Carpet L.H.	1
3	37377	Carpet R.H.	1
4	10016	Snap Uph	35
5	14151	Rivet	35
6	37372	Seat, Bottom	1
7	37373	Side Panel, Lower L.H.	1
8	37374	Side Panel, Lower R.H.	1
9	38178	Seat Back - Lower	1
10	38181	Side Panel - Upper L.H.	1
11	GM180018	H.H.C.S. 1/4-20 x 5/8	4
12	14044	Lock Washer 1/4	4
13	38199	Bracket, Seat	2
14	38180	Seat Bottom, Upper	1
15	38182	Side Panel - Upper R.H.	1
16	38179	Seat Back - Upper	1
17	38028	Head and Back Rest	1
18	38023	Supt. Tube - Head Rest	1
19	38027	Strap - Tube	2
20	14044	L/Washer 1/4	4
21	GM180018	H.H.C.S. 1/4-20 x 5/8	4
22	GM180020	H.H.C.S. 1/4-20 x 1/2	4
23	GM157733	T.H.C.R.M.S. 1/4-20 x 1/2	2
24	38014	Bracket, MTG.	2

BODY & LIGHTING GROUP

ITEM NO.	PART NO.	DESCRIPTION	NO. REQ'D
25	14038	F/Washer	4
26	14028	C/Lock Nut 1/4 - 20	4
27	38025	Spacer	2
28	33279	Washer - Rubber	2
29	37615	Trim 25" Approx.	as Req'd
30	31904	Rupp Logo	1
31	13503	Push Nut	2
32	14198	P.H.H.S. #10 - 24 x 1/4	2
33	37639	Lens - T/Light	1
34	34723	Gasket	1
35	12439	Bulb - GE # 1157	1
36	37637	T/Light Ass'y (Incl. 33 thru 35)	1
37	14043	L/Washer #10	2
38	14067	Hex Nut #10-24	2
39	GM154993	R.H.C.M.S. #6 - 32 x 5/8	4
40	38002	Bezel, L.H.	1
41	38003	Bezel, R.H.	1
42	38004	Spacer, Rubber 5" Lg.	2
43	37641	Lens - Turn Signal	1
44	36869	Bulb - GE #1073	1
45	37642	Gasket	1
46	37640	Turn Signal Ass'y (incl. 43 thru 45)	1
47	GM131181	L/Washer #6	4
48	GM134530	Hex Nut #6-32	4
48A	GM131014	F/Washer (not shown) #6	4
49	14343	Hex Nut # 10 - 32	4
50	14043	L/Washer #10	4
51	37644	Socket - Side Light	1
52	19059	Bulb GE #168	1
53	37645	Lens - Side Light	1
53A	36985	RR. Side Light Ass'y (incl. 51 thru 53)	2
54	36887	Key No. 001	2
55	36888	Key No. 160	2
56	36889	Key No. 213	2
57	36890	Key No. 287	2
58	36891	Key No. 400	2
59	36886	Latch Ass'y	1
60	38009	Deck Lid - Red	1
	38010	Deck Lid - Blue	1
	38011	Deck Lid - Yellow	1
	38012	Deck Lid - White	1
61	14013	P.H.C.R. M.S. 1/4-20 x 1/2	4
62	14037	F/Washer 1/4	4
63	37447	Hinge	2
64	14028	C/Lock Nut 1/4 - 20	4
65	37315	Trunk	1
66	37521	Seal, Trunk 12" Lg.	4
67	GM455999	Carriage Bolt 5/16 - 18 x 5/8	4
67A	36363	Pass Grip Kit (incl. 67 thru 70)	2
68	15680	Pass. Grip	2
69	GM9418924	F/Washer	4
70	14029	C/Lock Nut 5/16 - 18	4
71	GM126358	Carr. Bolt	8
72	38192	Washer, Rubber	4
73	GM157777	T.H. CR. M.S. 5/16 - 18 x 1	4
74	14083	Fender Washer 5/16	8
75	14029	C/Lock Nut 5/16-18	8
76	38118	Foot Rest Mtg. Base	2
77	14039	F/Washer 5/16	4
78	14029	C/Lock Nut 5/16 - 18	4
79	38116	Foot Rest, Coated	2
80	38114	Foot Rest Kit	1
81	GM9818924	F/Washer 1/4	2
82	14044	L/Washer 1/4	2
83	GM180020	H.H.C.S. 1/4 20 x 1/2	2
84	37370	Centaur - Decal	2
85	37362	L.H. Stripe	1
86	37363	R.H. Stripe	1
87	GM154993	R.H.C.M.S. No. 6 - 32 x 5/8	4
88	36916	Lens Ass'y	2
89	19059	Bulb GE #168	2
90	37186	Socket Ass'y	2
90A	37646	FR. Side Light Ass'y (incl. 87 thru 90)	2
91	GM131181	L/Washer #6	4
92	GM134530	Hex Nut #6 - 32	4
93	14029	C/Lock Nut 5/16 - 18	8
94	GM157777	T.H.C.R. M.S. 5/16 - 18 x 1	8

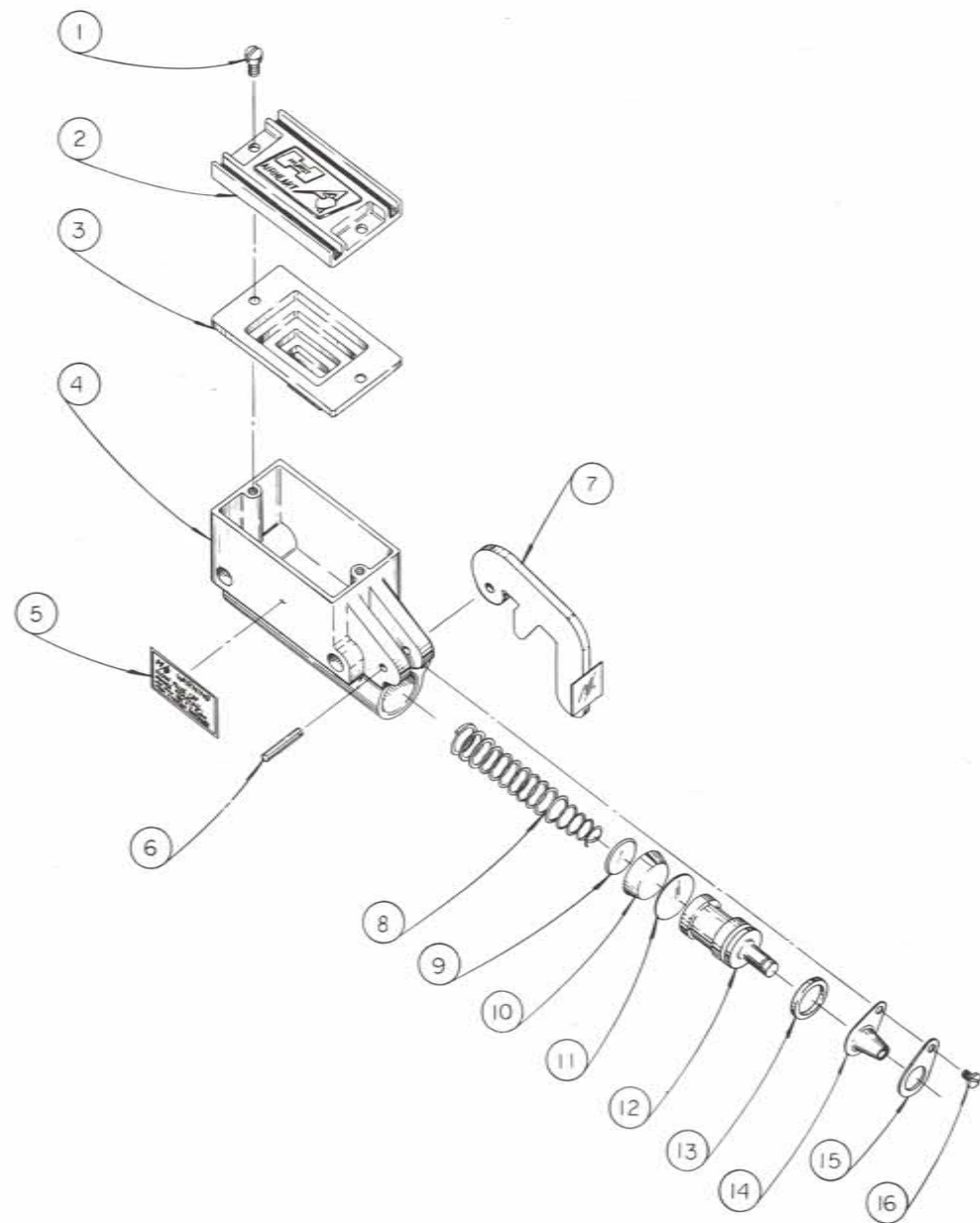
CONSOLE GROUP



CONSOLE GROUP

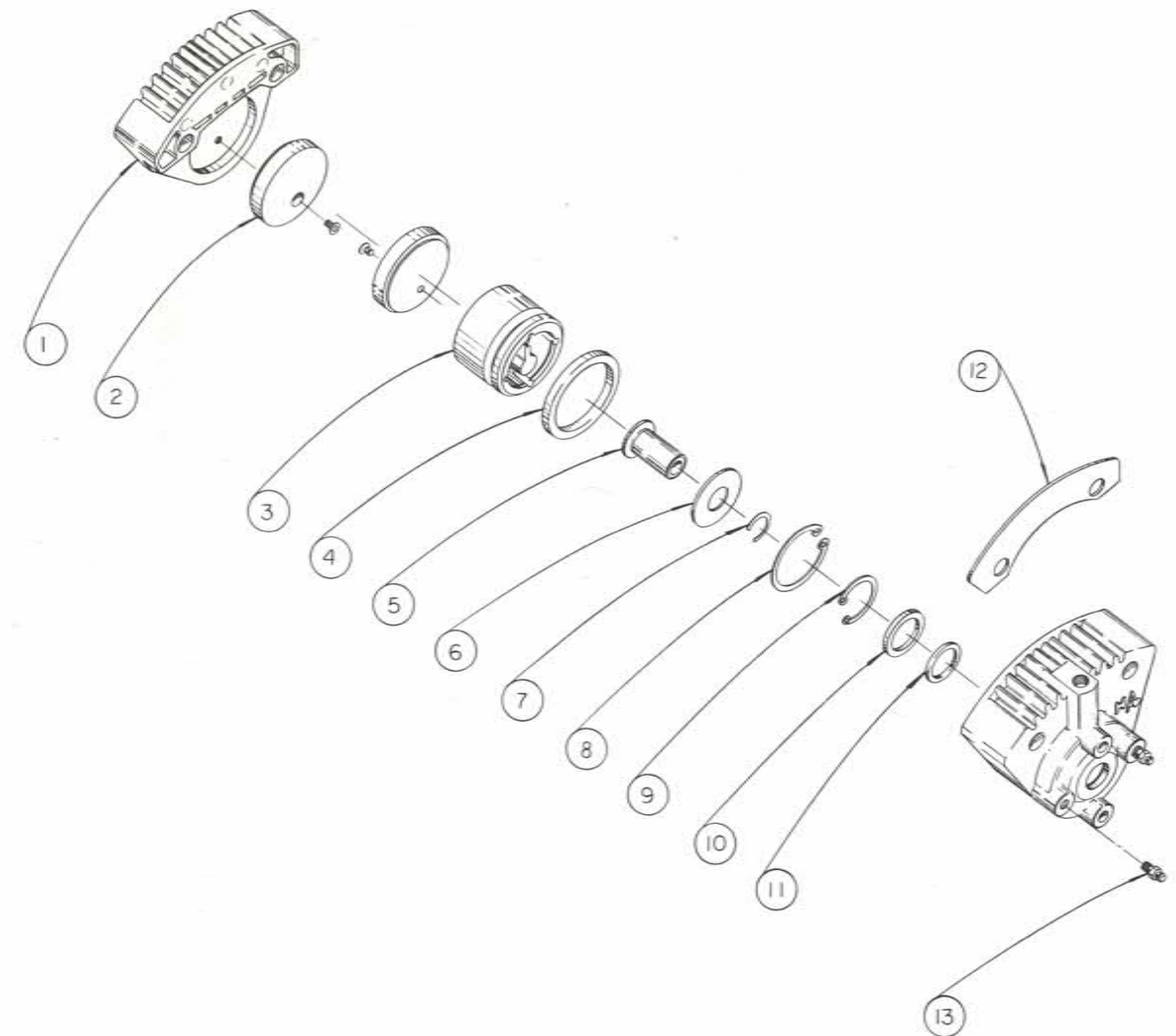
ITEM NO.	PART NO.	DESCRIPTION	NO. REQ'D.
1	34843	Hex Nut 6mm	1
2	36885	Choke Ass'y	1
3	37317	Console LH	1
4	34844	Panel Nut	1
5	37364	Dash - Decal	1
6	31904	Rupp Logo	1
7	13503	Push Nut	2
8	33393	Tachometer Ass'y (Incl. 9 thru 12)	1
9	GM131282	Bulb GE No. 53	1
10	33395	Mtg. Brk't	1
11	14075	L/Washer No. 8	2
12	14066	Hex Nut No. 8-32	2
13	36873	Speedometer Ass'y (Comp.)	1
14	37629	Bulb - Osram No. 3868	1
19	36874	Speedometer Cable Ass'y	1
20	37375	Console Pad	1
21	37318	Console - Rear	1
22	GM9418924	Fender Washer 5/16	2
23	14044	L/Washer 1/4	2
24	GM180020	H.H.C.S. 1/4-20 x 3/4	2
25	37365	Shift - Decal	1
26	37367	Brake Release - Decal	1
27	37366	Parking Brake - Decal	1
28	37316	Console LH	1
30	11858	Speed Nut 1/4-20	8
31	37005	Indicator Light - Blue	1
32	37006	Indicator Light - Green	1
33	37007	Indicator Light - Yellow	2
34	GM131282	Bulb GE No. 53	4
35	37485	Harness - Frame	1
36	37390	Ign. Switch	1
37	14200	P.H.C.R.M.S. 1/4-20 x 3/4	8
38	19777	Nut - Ign. Switch	1
39	37623	Key - Ign. Switch	1
40	37477	Grommet - Cable	1
41	GM138506	Ext. T. L/Washer 3/4 I.D.	1
42	GM138517	Ext. T. L/Washer 1" I.D.	1

HURST/AIRHEART MASTER CYLINDER



ITEM NO.	PART NO.	DESCRIPTION	NO. REQ'D.
1	36945	Screw	2
2	36943	Cap	1
3	36942	Diaphragm	1
4	36931	Housing	1
5	37778	Decal (Warning)	1
6	36939	Roll Pin	1
7	36941	Lever	1
8	36936	Spring	1
9	36934	Cup Protector	1
10	36933	Cup	1
11	37751	Shim	1
12	36932	Piston	1
13	36935	Seal	1
14	36938	Boot	1
15	36937	Retainer	1
16	36940	Screw	1

HURST/AIRHEART BRAKE CALIPER

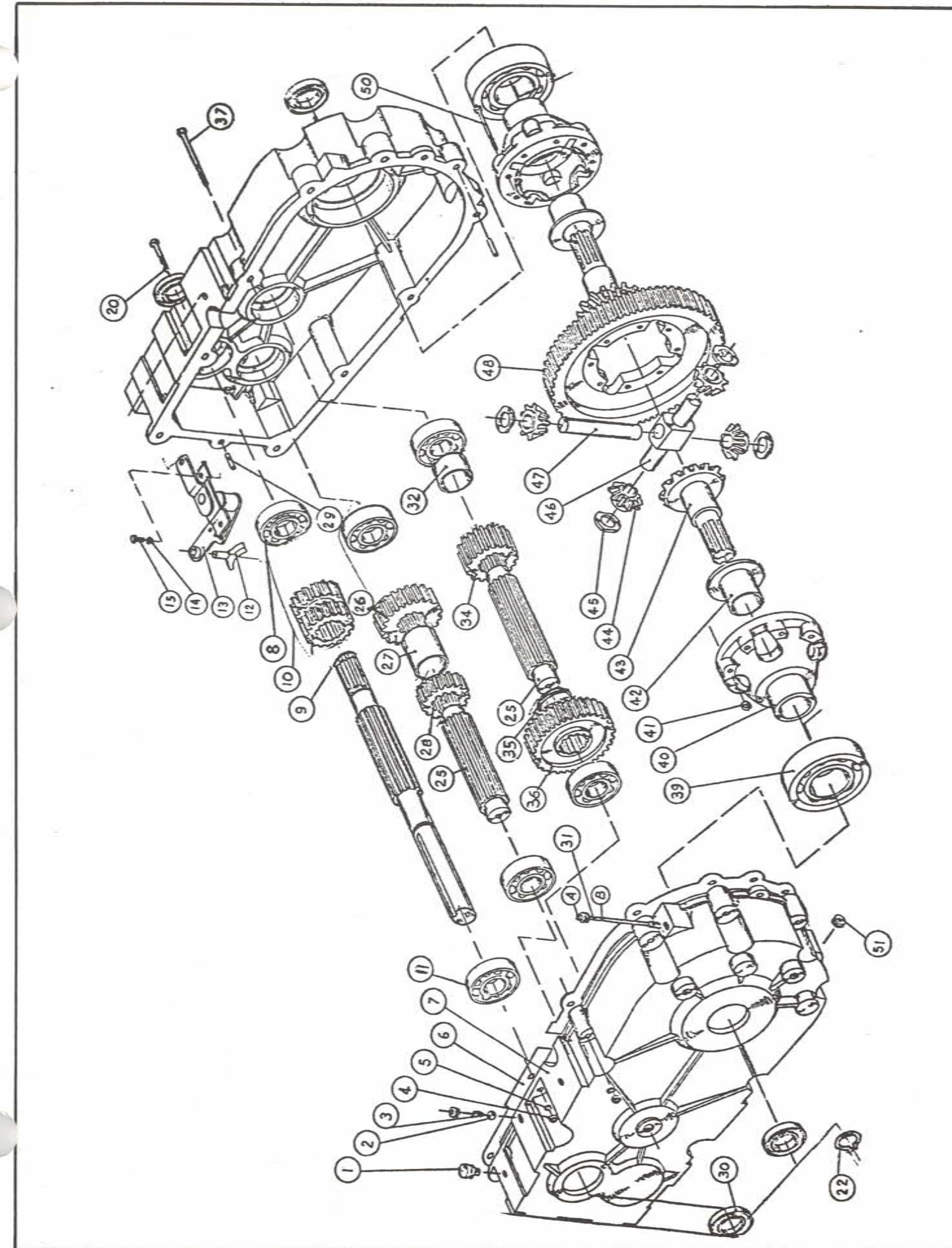


ITEM NO.	PART NO.	DESCRIPTION	NO. REQ'D.
1	37838	Housing, Anvil	1
2	37693	Puck Ass'y (Includes Screws)	2
3	37882	Piston	1
4	37883	'O' Ring	1
5	37884	Wear Indicator	1
6	37885	Plate	1
7	37886	'C' Ring	1
8	37887	Snap Ring - Piston	1
9	37888	Snap Ring	1
10	37889	Back Up Ring	1
11	37890	'O' Ring Seal	1
12	37891	Shim, Spacer	1
13	37892	Fitting	2
*	37893	Rebuild Kit	

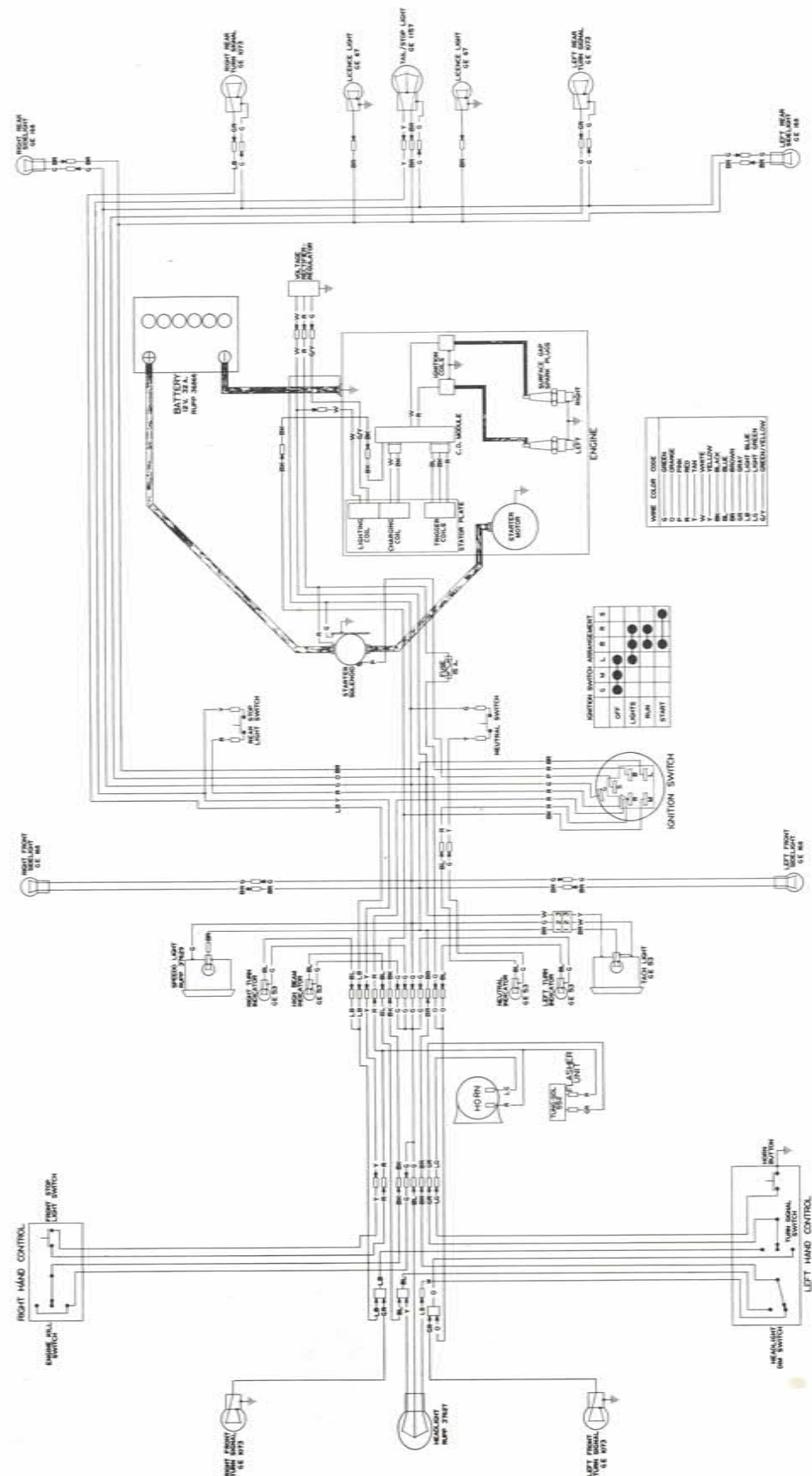
TRANSMISSION

ITEM NO.	PART NO.	DESCRIPTION	NO. REQ'D.
1	37583	Air Vent	1
2	GM147491	Locker Ball	1
3	37553	Spring Ball	1
4	14024	H/Nut 5/16-18	10
5	14047	L/Washer 5/16	10
6	37554	Case Gasket	1
7	37555	Transmission Case LH & RH	1
8	37584	Ball Bearing	5
9	37557	Shaft Input	1
10	37558	Gear - Transfer 21 TH	1
11	37585	Ball Bearing	1
12	37559	Shifter Fork	1
13	37560	Fork Lever Ass'y	1
14	14047	L/Washer 1/4	2
15	GM180073	HHCS 5/16-18 x 1/2	2
20	GM180081	HHCS 5/16-18 x 1 1/4	4
22	37582	Snap Ring	1
25	37565	Transmission Shaft	2
26	37566	Gear 30 TH	1
27	37567	Spacer	1
28	37568	Gear 21 TH	1
29	GM103735	Straight Pin	2
30	37569	Oil Seal	4
31	37570	Oil Gauge	1
32	37571	Spacer	1
34	37573	Gear 25 TH	1
35	37574	Spacer	1
36	37575	Gear 45 TH	1
37	GM180091	HHCS 5/16-18 x 2 1/2	6
39	37587	Ball Bearing	2
40	37576	Differential Body	2
41	GM454750	L/Nut 1/4-28	8
42	37577	Flanged Bearing	2
43	37578	Bevel Gear 18 TH	2
44	37579	Pinion 12 TH	2
45	37580	Thrust Bearing	2
46	37581	Pinion Axle	1
47	37582	Pinion Pin	1
48	37556	Gear 85 TH	1
50	GM181582	HHCS 1/4-28 x 2 5/8	8
51	37586	Plug	2
Ass'y	36849	Transaxle Ass'y	1

TRANSMISSION



WIRING DIAGRAM



SPECIFICATIONS

ENGINE

Model	SK-340-2AS Oil Injected, Two-Seater
Type	Two Cylinder, Air Cooled, Two cycle
Displacement	339cc
Compression Ratio	7.5:1
Carburetor	Mikuni 32mm
Oil Pump	Mikuni Dual Output
Ignition Type	Capacitor Discharge Ignition
Alternator Output	150 Watts
Ignition Timing	.090 BTDC
Spark Plug	Champion N-19V
Starter	Electric
Air Cleaner	Paper Filter Fram CA-148PL with Special Seal

CHASSIS

Overall Length	124.5 Inches
Overall Width	60.6 Inches
Overall Height	38 Inches
Wheelbase	90 Inches
Weight	720 lbs Curb Weight
Transmission	Variable Ratio
Differential	Torque Converter with Forward/Neutral/Reverse
Tire Size	Automotive Type
Front Suspension	3.25/3.50-16 Front
Front Brake	B60-13 Rear
Rear Brake	Leading Link with Adjustable Shock
Fuel Tank Capacity	Internal Expanding
Oil Tank Capacity	Dual Inboard Hydraulic Disc
	10 Gallons
	3 Quarts