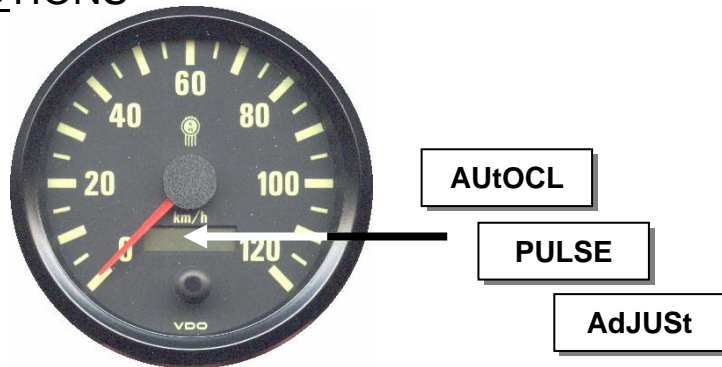


WWG Vision and International Electronic Speedometer

CALIBRATION INSTRUCTIONS

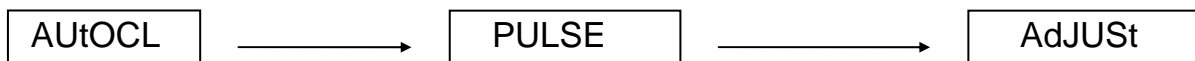


Three alternatives can be used to calibrate the speedometer.

1. Function "AUtOCL" - automatic calibration by driving a measured distance of 1 km.
2. Function "PULSE" - for entering a known pulse per km ratio.
3. Function "AdJUSt" - for calibration using a reference speed indication (eg. Roller test bench.)

Push button in front lens and hold, **Switch on the ignition and start the engine.** The display will alternate AUtOCL, PULSE and AdJUSt at 2 second intervals.

Select function required by releasing the button when this function is displayed.



AUtOCL

After selecting the AUtOCL function, the display changes to "bUttOn" after 3 secs
Go to the beginning of a measured 1 km distance. An accurate 1km is critical.

At the beginning of the measured 1km, push the button once.

The display will now flash "StArt".

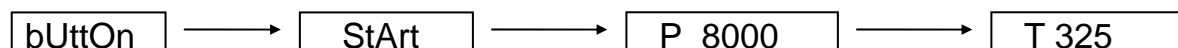
When you drive the speedo will not work but it will continue to flash "StArt".

Drive the vehicle to the end of the measured 1 km, stop and push the button once.

Wait. The display will now show the measured pulse per km figure.

Wait. Shortly after, the display will change to the odometer or trip reading.

This is an indication that the calibration was successful.



If the display flashes "FOO" at the end of the procedure, it is an indication of no speed signal. Check the speed sensor wiring and try the calibration again.

PULSE

After selecting the “PULSE” function, the display will show the stored pulse per km setting, after 3 seconds.(eg. P 8000) Default is 153000
The second last digit will be flashing.



Start entering the pulse ratio immediately.

The flashing digit can be changed by pushing the button.

Shortly after that digit is set, the next digit will flash and will be able to be set.

This will continue until all digits have been set,

Wait until the display changes to the odometer or the trip meter reading before switching off the ignition.

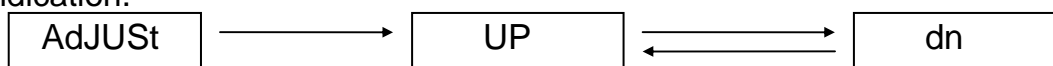
AdJUST

CAUTION: Only use this function on a roller test bench (or dynamometer) with an accurate reference speed indication. If such equipment is not available do not use this mode to calibrate the speedometer.

After selecting “AdJUST” function, the display alternates between “UP” and “dn” (up/down) after three seconds.

Run the vehicle up to a steady speed on the rollers.

Pushing and holding the button when “UP” is displayed increases the pointer indication. Holding the button down when “dn” is displayed will lower the pointer indication.



Initially the change of the indication will be slow for a precise adjustment, then the rate of change increases.

Release the button when the pointer indication corresponds to the reference speed. After one minute the speedometer will exit calibration mode and display the odometer or trip meter reading.