

DAVY THEATRICAL COSMETIC SPECIALTIES

1-888-225-7026

HemoGoblin

The Next Generation Acrylic Blood



NON STAINING
WATERPROOF
GLOSSY
NEW POCKET SPRAYER



WWW.MICHAELDAVY.COM

ALCOHOL APPLIED
WATER-MELON
NON-LATEX APPLIANCES

AT HALLOWEEN
WATER-MELON
IS ALWAYS
IN SEASON



1-888-225-7026

WWW.MICHAELDAVY.COM

DAVY THEATRICAL MAKE UP SPECIALTIES

www.michaeldavy.com 1-888-225-7026

order@michaeldavy.com



LATEX ALTERNATIVE

WATER-MELON

LIQUID, APPLIANCES, BALD CAPS AND KITS



2020

APPLIES WITH ALCOHOL — NO GLUE

What IS Water-Melon?

Water-Melon is a latex alternative developed in 2002 by Michael Davy, 30 year make up industry veteran and owner of Davy Theatrical Cosmetics. Originally developed as a water based bald cap plastic Michael Davy found that the caps made with it were able to be applied with alcohol....no glue. He then applied this material to making appliances and found that he could slush the material into the same plaster molds that he was making his latex appliances in. From that moment on the industry was changed. It has since been found to be an all purpose alternative to latex. It can be slushed, poured, gelled, foamed or stippled. Anything you can do with latex you can do with Water-Melon. No it does not contain any real watermelon fruit but anything made with Water-Melon can be applied with just alcohol. No adhesive. It also takes on your own skin color so there is no need for matching make up to skin and since there is no adhesive there is no need for remover.

SALES TERMS

- Minimum order **\$50.00 before shipping for retail sales or Volume Discount**
- Minimum order \$250.00 for wholesale sales after discount.
- No per item discounts except for items discounted by volume on our Separate Discount Schedule (also marked "Vol. Discount" in Catalog).

PAYMENT: Payment must be made with Visa, MC, or AMEX. We accept PayPal with a 5% surcharge. Payment is due when order is placed as we make to order and keep no stock. We do not offer "Halloween billing" or delayed shipping unless prior arrangements have been made. **If Package is not accepted and returned, customer will be invoiced for shipping costs. We charge a minimum \$ 10.00 shipping and handling fee.** We encourage retail customers to contact your local distributor first. If your distributor is either out of stock or you do not have a distributor near you, then you should contact us directly (and maybe become a distributor for your area).

Shipping requirements over \$10.00 will be billed accordingly

We accept Visa, Master Card and American Express **Network requires a confirmation (card billing) address with Zip (postal) code and security code from the back of the card with VISA and MC. Front with AMEX.** Due to fluctuations in the chemical industry it is necessary to institute a 3% Material Surcharge to cover these short term increases.

DISCOUNTS We offer 2 types of discount. Straight **WHOLESALE** and **VOLUME DISCOUNT**.

WHOLESALE is a straight 50% from the retail price listed in the catalog. This discount applies to most small size bottled items and Water-Melon kits packaged for retail sale.

VOLUME DISCOUNT is discount by virtue of the size or quantity. This discount applies to most bulk appliances and large size bottled items. Appliance price breaks are listed below:

Water-Melon Appliances discounted by total number of appliances not per style.
1-20 appliances 0% ,

21-50 appliances 20% ,

51-100 appliances 30% ,

101-250 appliances 40% ,

251-500 appliances 50%

501-1000 appliances 60%

RETURNS: DUE TO THE NATURE OF COSMETICS AND COSMETIC PRODUCTS WE CANNOT GUARANTEE THE SANITARY NATURE OF ANY ITEMS ONCE SHIPPED AND RETURNED. THEREFORE, WE DO NOT ACCEPT RETURNS OR SUBSTITUTIONS. Please be sure of what you are ordering before placing the order. If you are not sure please call our toll free Product Information and Order line:

1(888) 225-7026. International dial (386) 668 0850

email: order@michaeldavy.com

WATER-MELON BALD CAPS

THIS IS WHERE IT ALL BEGAN.....

Water-Melon bald caps are the only bald cap made from a water based vinyl which can be applied and blended with **ALCOHOL**. Ideal for use on Television, film or theme parks.

Volume Discounts apply. See sales terms page.

Available in Large, long nape. Large, Med Nape. Small, Long Nape. and Small Short Nape.



Water-Melon Liquid Products

WATER-MELON

Available in Soft for appliances and Regular for bald caps

The first water based cap vinyl. After years of making caps with hazardous solvents the era of the "safe" cap plastic has arrived. Water-Melon is superior to standard cap plastic in many ways. Thins with water. Edges dissolve with alcohol, not acetone. No solvent vapors. Water-Melon can be applied directly to the skin like latex and can be slushed into plaster molds like latex. Excellent latex alternative. You can make plastic appliances from plaster molds whose edges can be both applied and dissolved with alcohol. Makes an ideal ager or stipple - edges can be blended with alcohol. Water-Melon can be brushed, sponged, slushed, or sprayed. About 2 oz. can sponge one cap. No respirators needed. No haz. mat shipping needed. Can be tinted with our Water-Melon tints or tint with Acrylic Paints to make a no tack PAX. FDA APPROVED COATING (Caution during winter shipping) **AVAILABLE IN REGULAR OR SOFT.**



AVAILABLE IN
Wholesale Disc 1oz., 2oz., 4oz.,
VOL DISCOUNT: 16oz., 32oz.,
1 GAL., 5 GAL



Water-Melon Components

WATER-MELON GELLING AGENT

Sodium Silicofluoride also used to gel Foam Latex. Add a few drops to the Water-Melon liquid to gel Water-Melon appliances solid in minutes. No need for layering of material. Useful when making deep appliances in a plate mold or when making appliances in a closed mold. Also useful when making Water-Melon appliances in a silicone or other non porous mold. Allows for rapid production of appliances.

Available in 1oz, 2oz and 4oz.

Wholesale discount applies



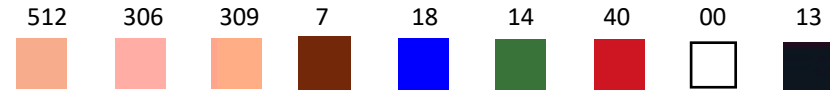
WATER-MELON TINTS

Water based FD&C Cosmetic colors to intrinsically tint our Water-Melon water based Vinyl. While most any water based color can be added to the Water-Melon liquid these are FD&C Certified colors suitable for cosmetic, skin contact use. If the order is large enough we can make any color on our color chart.

While Water-Melon is intended to be used clear as a translucent appliance material there may be times when a tinted version is necessary. When making bald caps, ears, noses, horns or any appliance where it may rise off the skin and you don't want to see the inside.

Available in 1oz, 2oz and 4oz.

Wholesale discount applies.



WATER-MELON APPLIANCES AND KITS

Gotch 'ur Nose



Open Session



Howlin at the Moon



WATER-MELON APPLIANCES AND KITS

Goblin 'ur Noggin



Ear Ye Ear Ye



Elf 'Urself



Water-Melon Components contd.

WATER-MELON SILICONE GEL PRIMER

A primer to be used with Water-Melon when using Water-Melon as an encapsulent with silicone gel appliances. It permanently bonds Water-Melon to the silicone at the molecular level preventing delamination. When used to encapsulate silicone gel it will allow for the application of the GFA using only alcohol. It will also prevent delamination when using W-M as an encapsulent with silicone gel in a plaster mold.



When using Water-Melon as an encapsulent for a GFA apply the Water-Melon to the released positive (and neg) mold. Then apply the Primer to the dry Water-Melon. Allow it to dry, then fill the mold with the Silicone Gel. The Primer will bond the Water-Melon to the gel allowing for a gel appliance that can be blended and applied with alcohol. May be used with other types of encapsulents but testing is recommended. Water-Melon Primer can be brushed, sprayed (recommended) or swabbed.



Available in 1oz, 2oz and 4oz. Wholesale discount applies. 16oz and 32oz. Volume Discount applies.



WATER-MELON APPLIANCES AND KITS

Scary Kerry



WATER-MELON APPLIANCES AND KITS

You're so Vein



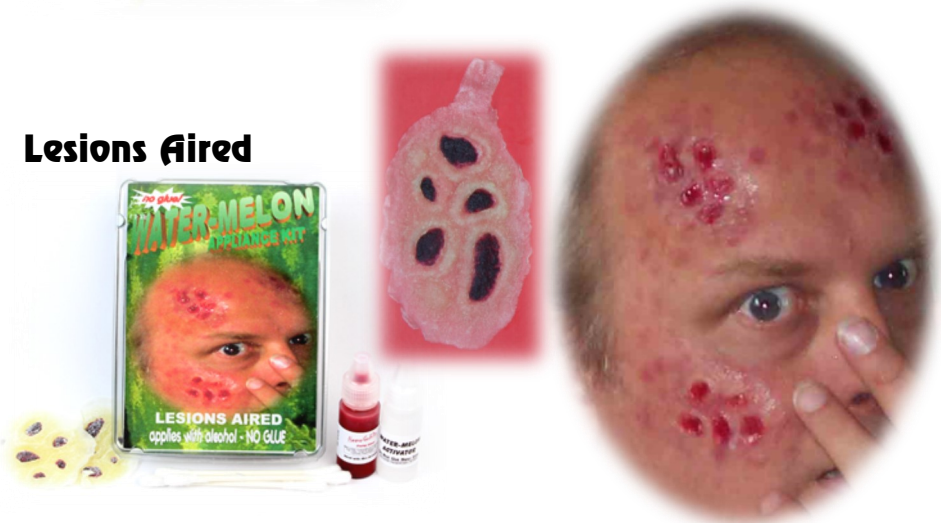
Lead Poison



Cluster Pox



Lesions Aired



Closing Statements



WATER-MELON APPLIANCES AND KITS

Piercing Scream



WATER-MELON APPLIANCES AND KITS

Leave 'em in Stitches



Li'l Devil



Vlad ta See Ya



Big ol Devil



Tripple Bypass



WATER-MELON APPLIANCES AND KITS

Ridin' Shotgun



WATER-MELON APPLIANCES AND KITS

Revsion



Shanked



Cybornator



Sworded



Soul Food



WATER-MELON APPLIANCES AND KITS

Pentabrand



WATER-MELON APPLIANCES AND KITS

Tweek 'ur Cheek



Fishheads



Creepy Finger



KIT NOT AVAILABLE
SINGLE APPLIANCE
ONLY

Final Closure



Jail Break



WWW.MICHAELDAVY.COM
1-888-225-7026

WATER-MELON

SILICONE GEL PRIMER

PERMANENTLY BONDS WATER-MELON (OR ANY ENCAPSULENT) TO SILICONE GEL.

ALLOWS A FULLY ENCAPSULATED APPLIANCE TO BE APPLIED WITH ALCOHOL, JUST LIKE A WATER-MELON APPLIANCE.

ALLOWS ALCOHOL ACTIVATED COLORS LIKE DURACOLOR TO BOND TO THE ENCAPSULENT FOR PREPAINTING.

ALLOWS FOR PLASTER MOLD USE WHEN MAKING SILICONE GEL APPLIANCES WITHOUT DELAMINATING.

SKIN SAFE FOR USE WITH ON-SKIN SILICONE CONSTRUCTIONS.

CAN BE USED AS A STAND-ALONE ENCAPSULENT ITSELF.



MAKING TRANSLUCENT ALCOHOL APPLIED APPLIANCES WITH WATER-MELON

STEP 1

Sculpt your cut out of clay or wax on a flat surface. Make a plate mold out of Hydrocol or any plaster. No expensive silicone molds necessary.

STEP 2

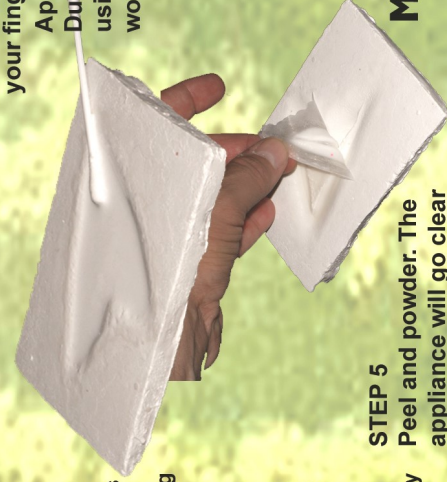
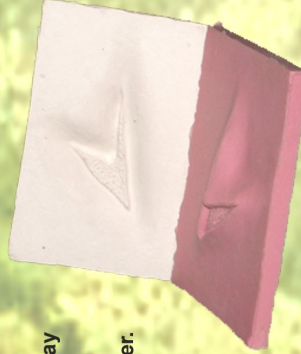
Once you are ready to make the appliance dampen the mold to start the hydraulic draw. This is what will draw the water from the Water-Melon

STEP 3

Pour the liquid Water-Melon (SOFT) into the plate mold until it covers all the detail. You want a solid pour while ensuring no trapped air bubbles.

STEP 4

FOGETABOUTIT Let it dry overnight. (maybe longer depending on the thickness) - NO FREEZING REQUIRED! Most cuts and scars will dry overnight



STEP 5

Peel and powder. The appliance will go clear over time.

APPLICATION

When you are ready to apply just use 99% alcohol or Denatured Ethanol instead of glue.

No transfer paper needed. Then blend away the edges using the same 99% Isopropyl alcohol. Powder or tap with your finger to remove shine.

Apply your color to the inside of the cut using Duracolor or any alcohol activated color. Then using AGPC for the blood you have a waterproof wound for continuity.

For last looks - dress with your favorite film blood.



MICHAEL DAVY FILM & TV MAKE UP

1-888-225-7026

WWW.MICHAELDAVY.COM