

LATEX ALTERNATIVE

# WATER-MELON



LIQUID, APPLIANCES, BALD CAPS AND KITS



APPLIES WITH ALCOHOL — NO GLUE

# **What IS Water-Melon?**

**Water-Melon is a latex alternative developed in 2002 by Michael Davy, 30 year make up industry veteran and owner of Davy Theatrical Cosmetics. Originally developed as a water based bald cap plastic Michael Davy found that the caps made with it were able to be applied with alcohol....no glue. He then applied this material to making appliances and found that he could slush the material into the same plaster molds that he was making his latex appliances in. From that moment on the industry was changed. It has since been found to be an all purpose alternative to latex. It can be slushed, poured, gelled, foamed or stippled. Anything you can do with latex you can do with Water-Melon. No, it does not contain any real watermelon fruit but anything made with Water-Melon can be applied with just alcohol. No adhesive. It also takes on your own skin color so there is no need for matching make up to skin and since there is no adhesive there is no need for remover.**

# Water-Melon Liquid Products

# WATER-MELON

The first water based cap vinyl. After years of making caps with hazardous solvents the era of the "safe" cap plastic has arrived. Water-Melon is superior to standard cap plastic in many ways. Thins with water. Edges dissolve with alcohol, not acetone. No solvent vapors. Water-Melon can be applied directly to the skin like latex and can be slushed into plaster molds like latex. Excellent latex alternative. You can make plastic appliances from plaster molds whose edges can be both applied and dissolved with alcohol. Makes an ideal ager or stipple - edges can be blended with alcohol. Water-Melon can be brushed, sponged, slushed, or sprayed. About 2 oz. can sponge one cap. No respirators needed. No haz. mat shipping needed. Can be tinted with our Water-Melon tints or tint with Acrylic Paints to make a no tack PAX. FDA APPROVED COATING (Caution during winter shipping) **AVAILABLE IN REGULAR FOR BALD CAPS OR SOFT FOR APPLIANCES.**



**AVAILABLE IN**

**Wholesale Disc 1oz., 2oz., 4oz.,**

**VOL DISCOUNT: 16oz., 32oz.,  
1 GAL., 5 GAL**



## Water-Melon Cream

Water-Melon Cream is a thick form of our popular Water-Melon Liquid and makes a great alternative to transfer material or Pros Aide Cream. There is no need for transfer paper, it is not made with cabosil or sticky adhesive, does not require freezing and can be used in closed or plaster molds. It was developed so Water-Melon could be used in curved and closed molds like forehead or wrap-a-round neck molds without running out like liquids do. No longer are you tied to the flat plate mold just to make an appliance.

It can be used with our Water-Melon Gelling Agent to gel the Cream in closed molds and appliances made with the Water-Melon Cream can be applied with our Alco-Activator, just like ones made with Liquid Water-Melon.



# Water-Melon Components

## WATER-MELON GELLING AGENT

Sodium Silicoflouride also used to gel Foam Latex. Add a few drops to the Water-Melon liquid to gel Water-Melon appliances solid in minutes. No need for layering of material. Useful when making deep appliances in a plate mold or when making appliances in a closed mold. Also useful when making Water-Melon appliances in a silicone or other non porous mold. Allows for rapid production of appliances.

Available in 1oz, 2oz and 4oz.

Wholesale discount applies



## WATER-MELON TINTS

Water based FD&C Cosmetic colors to intrinsically tint our Water-Melon water based Vinyl. While most any water based color can be added to the Water-Melon liquid these are FD&C Certified colors suitable for cosmetic, skin contact use. If the order is large enough we can make any color on our color chart.

While Water-Melon is intended to be used clear as a translucent appliance material there may be times when a tinted version is necessary. When making bald caps, ears, noses, horns or any appliance where it may rise off the skin and you don't want to see the inside.

Available in 1oz, 2oz and 4oz.

Wholesale discount applies.



512    306    309    7    18    14    40    00    13





# Water-Melon Components continued



## WATER-MELON NON-ALCOHOL HAIR GEL

Developed for use with Water-Melon Bald Caps to flatten hair under the bald cap. Can be used with all types of bald caps. Non Flammable. No VOC's

Available in 2oz., 4oz., 8oz and 16oz

Wholesale discount applies



# Water-Melon Components contd.

## WATER-MELON SILICONE GEL PRIMER



A primer to be used with Water-Melon when using Water-Melon as an encapsulent with silicone gel appliances. It permanently bonds Water-Melon to the silicone at the molecular level preventing delamination. When used to encapsulate silicone gel it will allow for the application of the GFA using only alcohol. It will also prevent delamination when using W-M as an encapsulent with silicone gel in a plaster mold.



When using Water-Melon as an encapsulent for a GFA apply the Water-Melon to the released positive (and neg) mold. Then apply the Primer to the dry Water-Melon. Allow it to dry, then fill the mold with the Silicone Gel. The Primer will bond the Water-Melon to the gel allowing for a gel appliance that can be blended and applied with alcohol. May be used with other types of encapsulents but testing is recommended. Water-Melon Primer can be brushed, sprayed (recommended) or swabbed.



Available in 1oz, 2oz and 4oz. Wholesale discount applies. 16oz and 32oz. Volume Discount applies.



# WATER-MELON APPLIANCES AND KITS

## Scary Kerry



## Lead Poison



## Lesions Aired





# WATER-MELON APPLIANCES AND KITS

## Leave 'em in Stitches



## Vlad ta See Ya



## Tripple Bypass





# WATER-MELON APPLIANCES AND KITS

## Ridin' Shogun



## Shanked



## Sworded



# WATER-MELON APPLIANCES AND KITS

## Tweek 'ur Cheek



## Creepy Finger



KIT NOT AVAILABLE  
SINGLE APPLIANCE  
ONLY

## Jail Break



# WATER-MELON APPLIANCES AND KITS

## Pentabrand



## Fishheads



## Final Closure





**WWW.MICHAELDAVY.COM**

**1-888-225-7026**

# **WATER-MELON**

## **SILICONE GEL PRIMER**

**PERMANENTLY BONDS WATER-MELON (OR ANY ENCAPSULENT) TO SILICONE GEL.**

**ALLOWS A FULLY ENCAPSULATED APPLIANCE TO BE APPLIED WITH ALCOHOL, JUST LIKE A WATER-MELON APPLIANCE.**

**ALLOWS ALCOHOL ACTIVATED COLORS LIKE DURACOLOR TO BOND TO THE ENCAPSULENT FOR PREPAINTING.**

**ALLOWS FOR PLASTER MOLD USE WHEN MAKING SILICONE GEL APPLIANCES WITHOUT DELAMINATING.**

**SKIN SAFE FOR USE WITH ON-SKIN SILICONE CONSTRUCTIONS.**

**CAN BE USED AS A STAND-ALONE ENCAPSULENT ITSELF.**





## MAKING TRANSLUCENT ALCOHOL APPLIED APPLIANCES WITH

# WATER-MELON

### STEP 1

Sculpt your cut out of clay or wax on a flat surface. Make a plate mold out of Hydrocal or any plaster. No expensive silicone molds necessary.

### STEP 2

Once you are ready to make the appliance dampen the mold to start the hydraulic draw. This is what will draw the water from the Water-Melon

### STEP 3

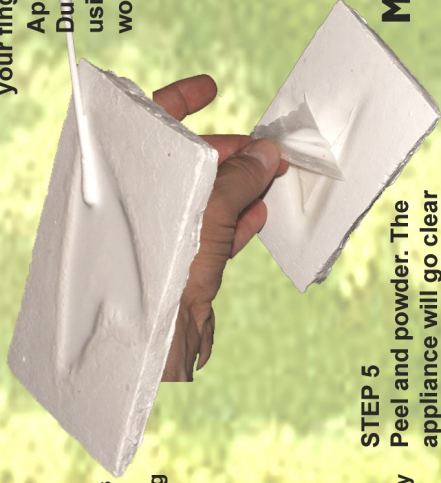
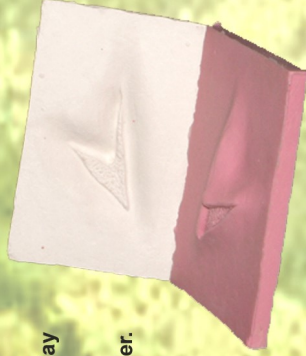
Pour the liquid Water-Melon (SOFT) into the plate mold until it covers all the detail. You want a solid pour while ensuring no trapped air bubbles.

### STEP 4

#### FOGETABOUTIT

Let it dry overnight.(maybe longer depending on the thickness) - NO FREEZING REQUIRED!

Most cuts and scars will dry overnight



### STEP 5

Peel and powder. The appliance will go clear over time.

### APPLICATION

When you are ready to apply just use 99% alcohol or Denatured Ethanol instead of glue.

No transfer paper needed. Then blend away the edges using the same 99% Isopropyl alcohol. Powder or tap with your finger to remove shine.

Apply your color to the inside of the cut using Duracolor or any alcohol activated color. Then using AGPC for the blood you have a waterproof wound for continuity..

For last looks - dress with your favorite film blood.



## MICHAEL DAVY FILM & TV MAKE UP

1-888-225-7026

WWW.MICHAELDAMY.COM

# WATER-MELON APPLIANCES AND KITS

## Revsion



## Cybornator



## Soul Food





# WATER-MELON APPLIANCES AND KITS

## Piercing Scream



## Li'l Devil



HORNS AVAILABLE IN BLAK ONLY

## Big ol Devil



# WATER-MELON APPLIANCES AND KITS

**You're so Vein**



**Cluster Pox**



**Closing Statements**





# WATER-MELON APPLIANCES AND KITS

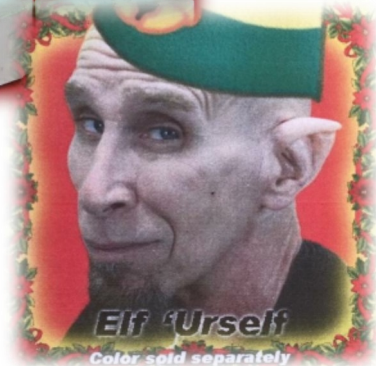
## Goblin 'ur Noggin



## Ear Ye Ear Ye



## Elf 'Urself



# WATER-MELON APPLIANCES AND KITS

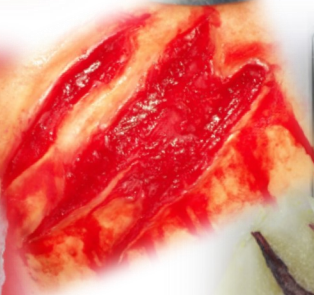
## Gotch 'ur Nose



## Open Session



## Howlin at the Moon



# WATER-MELON APPLIANCES AND KITS

## DINOPLASTY



## Low-n-Brow



### Appliance only



### Complete Kit



with:

- Appliance
- Prosthetic Cosmetic Palette
- Zombie Dust
- 1oz Water-Melon Liquid
- Pure talc
- W-M Activator
- Puff,
- Applicator sponge



# WATER-MELON BALD CAPS

**THIS IS WHERE IT ALL BEGAN.....**

**Water-Melon bald caps are the only bald cap made from a water based vinyl which can be applied and blended with ALCOHOL. Ideal for use on Television, film or theme parks.**

**Volume Discounts apply. See sales terms page.**

**Available in Large, long nape. Large, Med Nape. Small, Long Nape. and Small Short Nape.**



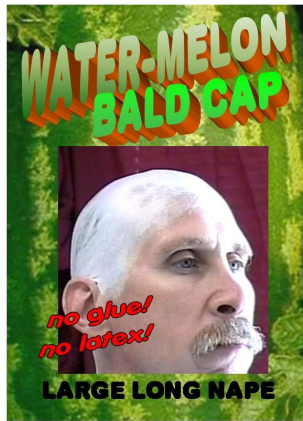


# WATER-MELON BALD CAPS

Apply with alcohol; Blend with alcohol

Available in sizes:

- Large, Long Nape
- Large, Medium Nape
- Small, Long Nape
- Small, Short Nape



## WATER-MELON BALD CAP APPLICATION INSTRUCTIONS

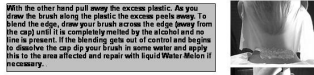
**MATERIALS NEEDED:**  
 Non Alcohol Hair Gel, 99% Isopropyl Alcohol or Denatured Ethanol, Scissors, Camel hair brush or cotton swabs, Liquid Water-Melon or Liquid Latex, Airbrush Grade Prosthetic Cosmetic Foundation (preferred) or RMG, Assistance with application is highly recommended.

Cap the subject's hair flat using just plain water or A NON ALCOHOL OR WATER BASED HAIR FLAT (THIS IS NOT WASHABLE AS THE USUAL "NON ALCOHOL" HAIR FLAT IS). This is not washable as it has soap or plant water in it with a drive. **DON'T USE LUBRICANT, COMB OR BRUSH AS THESE USUALLY CONTAIN ALCOHOL, WHICH MAY WEAKEN THE CAP.**

Short hair works better than long hair with the ears, sideburns and neck trimmed. Take the time to make sure that the cap is centered properly on the subject and that your subject is positioned correctly in the chair. The head should be positioned in a neutral, slightly upward tilt. Test ANY alcohol based product for compatibility.

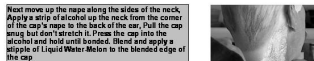


Use only 99% Isopropyl alcohol or Ethanol to apply this cap. **NO ADHESIVE** is required for most instances. Apply the alcohol just as you would the adhesive. If you do use an adhesive like the Spirit Gum, Silicone Adhesive, or our Acrylic Emulsion Adhesive it would depend on how long the cap will be on. Apply a 1/2 in. strip of alcohol sparingly. If using adhesive allow it to set up (become tacky) and let all gel/dry evenly, beginning at the nape first. Tilt head back slightly and press the cap into the alcohol (adhesive), holding a hand over the area and apply pressure to the area being held down for a count of 20 seconds to ensure a secure bond. Avoid overstretching the cap, especially when attaching. To trim the excess simply dip a round, inexpensive, camel hair brush into Isopropyl Alcohol (99%) and dissolve the plastic by placing the brush against the plastic just outside the 1/2 in. border of adhered cap.



With the other hand pull away the excess plastic. As you draw the brush along the plastic the excess peels away. To blend the edges, draw your brush across the edge (away from the cap) until it is completely melted by the alcohol and no more is present. If the blending gets out of control and begins to dissolve the cap dip your brush in some water and apply this to the area affected and repair with Liquid Water-Melon if necessary.

Stipple a coat of Water-Melon to the edge of the cap extending 1/4 - 1/2 in beyond the edge of the cap. This will help blend the cap and provide reinforcement, preventing the cap from coming loose during the production. Once this is done your subject may lower their head back to a neutral position without the cap pulling loose.

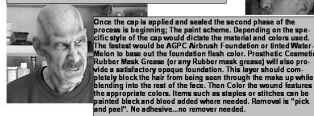


Next move up the nape along the sides of the neck. Apply a strip of alcohol up the neck from the corner of the cap's nape to the back of the ear. Pull the cap snug but don't stretch it. Press the cap into the alcohol and hold until bonded. Blend and apply a stipple of Liquid Water-Melon to the bonded edge of the cap.

Once the nape is adhered move on to the front. Roll back the flap over the forehead and apply alcohol to the forehead (roll the cap back down over the alcohol being applied to the forehead). Gently lift the corner of the forehead and stick a brush with alcohol under the cap and apply alcohol from the forehead to the bottom of the forehead. Pull the cap over and place it onto the alcohol. Hold until bonded. Once the edge is dissolved you are ready to move onto the ear; insert the brush under the cap in front of the ear and press to bond.



For extra durability seal the cap with one coat of Water-Melon liquid or liquid latex. Especially in areas of heavy stress such as the nape. This coating, on selected lengths of the cap onto the skin for added protection against edges lifting.



Once the cap is applied and sealed the second phase of the process is beginning: The paint scheme. Depending on the specific style of the cap you will clean the material and colors used. The fastest would be AGC's Airbrush Foundation or Fined Water-Melon to base out the foundation flesh color. Prosthetic Cosmetic Rubber Mask Cream (or any Rubber mask cream) will also provide a satisfactory opaque foundation. This layer would completely block the hair from being seen through the make up while blending into the hair of the face. Then Color the wound features the appropriate colors. Items such as staples or stitches can be painted black and blood added where needed. Remove as "quick and peep". No adhesive...no remover needed.

**MATERIALS NEEDED:**  
 99% Isopropyl Alcohol or Denatured Ethanol, Non Alcohol Hair Gel, Scissors, Camel hair brush or cotton swabs, Liquid Water-Melon or Liquid Latex, Airbrush Grade Prosthetic Cosmetic Foundation (preferred) or RMG, Assistance with application is highly recommended.

To see a video on applying a Water-Melon bald cap go to [www.michaeldavy.com/downloads](http://www.michaeldavy.com/downloads)  
 Made in the USA at Michael Davy Theatrical Cosmetics 888-225-7026  
[www.michaeldavy.com](http://www.michaeldavy.com)

To see a video on applying a Water-Melon bald cap go to [www.michaeldavy.com/downloads](http://www.michaeldavy.com/downloads)  
 Made in the USA at Davy Theatrical Cosmetic Specialties  
 888-225-7026

# NEW RETAIL SALES WEBSITES

We have recently increased our web presence with 2 new online retail platforms. For retail sales we encourage you to visit either:

<https://water-melon.net>

or

<https://www.etsy.com/shop/WaterMelonDavyMakeup>

These sites are updated frequently and not all products are available on these platforms for various reasons. So if the item you need is not available on either of these platforms please contact us directly either through email at [order@michaeldavy.com](mailto:order@michaeldavy.com) or by phone 1-888-225-7026 or 386-668-0850. You can also message us through these platforms.

If you are placing a large order for a haunt or a production I recommend ordering directly to obtain the best shipping options and best volume discounts

For **DOWNLOADS** and **HOW-TO VIDEOS** please visit <https://water-melon.net>. There you will find videos on making Water-Melon appliances, Foaming and pouring Foam Gelatin appliances as well as many Water-Melon application videos,

In addition to these platforms we are active on Facebook and Instagram Please follow us there as well

**WE PROUDLY SUPPORT SCOUTS BSA AND ROTARY INTERNATIONAL THROUGH SERVICE TO YOUTH AND COMMUNITY.**

**MEMBER OF I.A.T.S.E. LOCAL 798 MUHS NYC SINCE 1989**



## SALES TERMS

**For all retail sales we recommend using our RETAIL WEB PLATFORM at <http://water-melon.net>. When placing orders directly by phone or email the following terms apply:**

- Minimum order **\$50.00** before shipping for direct retail sales or Volume Discount.
- Minimum order \$250.00 for wholesale sales after discount.
- No per item discounts except for items discounted by volume on our Separate Discount Schedule (also marked "Vol. Discount" in Catalog).

**PAYMENT: When orders are placed through our retail web platforms [water-melon.net](http://water-melon.net) or etsy, payment will be made through those platforms.**

Payment for orders made directly must be made through a square link which we will send to your email with the link . Payment is due when order is placed as we make to order and keep no stock. We do not offer "Halloween billing" or delayed shipping unless prior arrangements have been made. **If Package is not accepted and returned, customer will be invoiced for shipping costs. We charge a minimum \$ 10.00 shipping and handling fee.** We encourage retail customers to contact your local distributor first. If your distributor is either out of stock or you do not have a distributor near you or otherwise cannot order through our web platform then you should contact us directly (and [erhaps become a distributor for your area).

Shipping requirements over \$10.00 will be billed accordingly

Due to fluctuations in the chemical industry it is necessary to institute a 3% Material Surcharge to cover these short term increases.

**DISCOUNTS** We offer 2 types of discount. Straight **WHOLESALE** and **VOLUME DISCOUNT**.

**WHOLESALE** is a straight 50% from the retail price listed in the catalog. This discount applies to most small size bottled items and Water-Melon kits packaged for retail sale.

**VOLUME DISCOUNT** is discount by virtue of the size or quantity. This discount applies to most bulk appliances and large size bottled items.

**RETURNS:** DUE TO THE NATURE OF COSMETICS AND COSMETIC PRODUCTS WE CANNOT GUARANTEE THE SANITARY NATURE OF ANY ITEMS ONCE SHIPPED AND RETURNED. THEREFORE, WE DO NOT ACCEPT RETURNS OR SUBSTITUTIONS. Please be sure of what you are ordering before placing the order. If you are not sure please call our toll free Product Information and Order line:

DAVY THEATRICAL COSMETIC SPECIALTIES

1-888-225-7026

# HemoGoblin

The Next Generation Acrylic Blood



[WWW.MICHAELDAVY.COM](http://WWW.MICHAELDAVY.COM)

**NON STAINING  
WATERPROOF  
GLOSSY  
NEW POCKET SPRAYER**



[ORDER@MICHAELDAVY.COM](mailto:ORDER@MICHAELDAVY.COM)

# WATER-MELON



## CREAM

- NO TRANSFER PAPER
- NO FREEZING
- NO STICKY GLUE
- USE IN CLOSED MOLDS
- USE IN PLASTER MOLDS
- READY TO PEEL IN 30 MIN.
- USE IN CURVED OR FLAT MOLDS.



**WATER-MELON'S ALTERNATIVE TO TRANSFER PASTE**

<https://water-melon.net>

**DAVY THEATRICAL COSMETICS**

**DAVY THEATRICAL MAKE UP**

**1-888-225-7026**

<https://water-melon.net> (retail sales)

[order@michaeldavy.com](mailto:order@michaeldavy.com)