

RYAN FINE

BIO

Ryan Fine is a piano-playing singer-songwriter from Cincinnati, OH. Upon graduating from UC's College-Conservatory of Music in 2017, he moved to Nashville to hone his songwriting and performance abilities. Ryan has had his music placed on TV shows and won Nashville's Best Instrumentalist of 2019 in the Nashville Scene's Reader's Poll. He is following all of these accomplishments with a new EP to be released in 2020.



STATISTICS AS OF FEB. 2020

Total Streams: 275.5k

Monthly Spotify Listeners: 6.7k

Instagram Followers: 2.3k

Facebook Likes: 1.2k

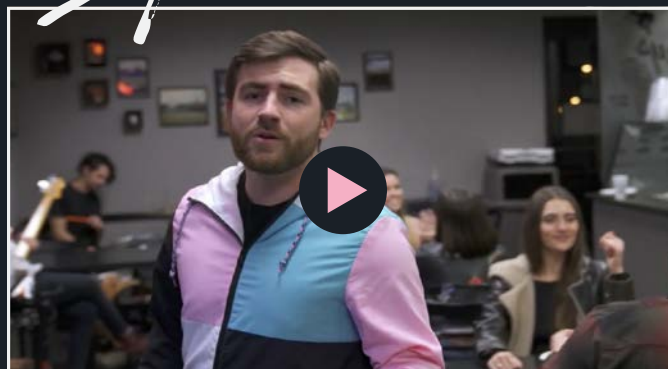
INFLUENCES

Charlie Puth, Ben Rector,
Billy Joel, Ben Folds



Square One

MUSIC VIDEO



RYAN FINE

ARTIST BASED IN NASHVILLE, TN | RYANFINE.COM | RYAN.FINE.RF@GMAIL.COM

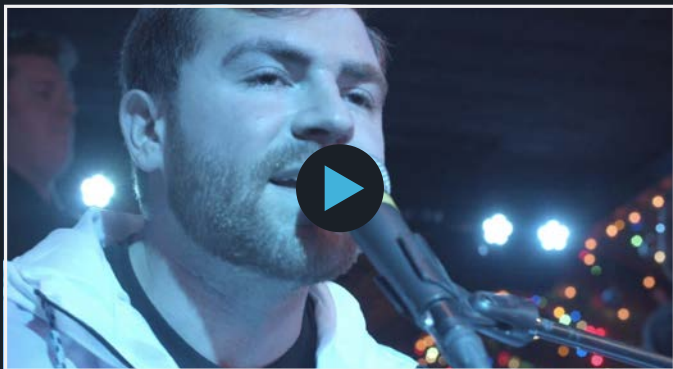


FULL BAND – Ryan Fine performs with his band consisting of vocals/keys (himself), electric guitar, bass, and drums. The full band has a fantastic energy live, akin to Billy Joel leaving it all on the stage. Ryan has a humorous and captivating stage presence that will keep the whole crowd amused from front to back. Ryan takes pride in his ability to read an audience so that everyone has a quality experience.

Check out this live clip of Ryan Fine and his band playing songs off his upcoming EP, **SQUARE ONE**.

SOLO – Ryan Fine is able to reimagine his produced records to fit more intimate settings. He regularly performs alone at house shows, hotels, and private events. Ryan also performs solo in front of larger audiences when opening for more established artists.

See Ryan perform in a House Show setting below!



THE SQUARE ONE EP is a walk through the different stages of love in a way that is profound, yet relatable. Love can be light and humorous, fun and flirtatious, sexy and mysterious, or absolutely tragic. All of these songs were written with personal epithets in mind, but also meant to capture greater emotions and experiences that are shared by many. Ryan's lyrics are set to dancy, pop melodies that float over a modern sound produced and designed in collaboration with Andy Sheridan. The EP in its entirety will be released July 10.



"Recording this project was the most fun I've ever had while making music. As soon as we started, I felt confident with everything we were creating and all of the decisions we were making. I really hope everyone enjoys listening to it as much as I enjoyed making it."



“**SQUARE ONE**” is a light-hearted song about navigating the dating scene in your early 20s. The song is about a particularly bad date (based on Ryan’s personal experience), where the other person talked about her ex-boyfriend, her credit card debt, and complained about the food as well as his friends’ band. This radio-ready song is meant to encourage single people in finding their match.

“**Square One**” is available on all streaming platforms.

“**WANT IT**” is a song about desiring a healthy relationship instead of “the chase”. This feeling is framed around suddenly realizing your perfect match is who you can always call to pass the time on a long car ride. This song is the most guitar-heavy and driving on the EP.

“**Want It**” releases on April 10.



“**PARTY FOR TWO**” is a song about making plans for a low-key and private romantic evening in with a special someone. This slow jam, which showcases his vocals over new age production elements, is perfect for setting the mood where no reservations are necessary.

“**Party For Two**” releases on May 22.

“**PRETEND**” is a gut-wrenching ballad in which Ryan reflects on being blindsided by a breakup. The pain he describes is less in the lack of feelings and more about the dishonesty of what he thought they had before the relationship ended. The delicate lyrics, vocal trembles, and sweeping strings recreated this sense of hurt. Out of all of Ryan’s original works, this song is the closest to his heart.

“**Pretend**” releases with **THE SQUARE ONE EP** on July 10.



RYAN FINE

RYANFINE.COM
RYAN.FINE.RF@GMAIL.COM
NASHVILLE, TN