

Hytera HALO



Hytera MNC360

Push-to-Talk over Cellular Mobile Radio

The Hytera MNC360 Push-to-Talk over Cellular (PoC) mobile radios are professional-grade communications devices that provide clear push-to-talk communication, instant group calling, and location tracking for reliable and efficient fleet dispatching.

Unlike cell-phones, tablets, and handheld devices, the MNC360 is a legal and DOT compliant device for safe communications while driving.

- Nationwide Coverage with 4G/LTE Networks
- Industry Leading Voice Quality with Digital Noise Suppression
- Supports Instant Group and Individual Calling
- Compact and Rugged Radios that are Easy to Use
- GPS Location Tracking for the Web-based Dispatching App



The MNC360 is supported on the Hytera HALO Nationwide PoC subscription service, the Hytera HALO OnSite and OnSite Plus customer owned PoC systems, and the Hytera HALO Connect unified PoC and LMR platform.

The MNC360 is also supported on Hytera HALO Dispatch, a powerful web browser-based group communications and location tracking application.



MNC360 Key Features



NATIONWIDE COVERAGE

- Cellular SIM card enables mobile network access for nationwide coverage with cellular 4G/LTE connectivity
- Dual LTE paddle antennas improve RX sensitivity by 3dB for excellent reception in weak signal areas



INSTANT GROUP AND INDIVIDUAL CALLING

- Push-to-Talk button on the handheld microphone initiates instant voice calls to groups or individuals
- Supports instant group calling from the HALO Dispatch web-based communications and location tracking application



INDUSTRY LEADING AUDIO QUALITY

- Digital noise cancellation technology
- Distortion and howling suppression
- Exclusive patented acoustic speaker cavity and forward facing 4 Watt high-volume speaker
- Delivers excellent voice quality in loud environments



GPS POSITIONING

- Highly accurate external GPS antenna enables speed monitoring and real-time location tracking with breadcrumbs and geofencing with the Hytera HALO Dispatch application



COMPACT AND EASY TO INSTALL

- Weighing only 10.6 ounces, the MNC360 is compact and narrow for flexible installations
- Rotating mounting bracket for attaching the MNC360 on top of the dashboard or on a vertical surface in the vehicle
- Highly-sensitive, dual LTE antennas reduce the need to install an external antenna (depending on where the MNC360 is installed inside the vehicle)



DESIGNED FOR SAFETY

- Eyes stay on the road with raised tactile buttons, piano style keys, and lightweight handheld microphone for safe and simple push-to-call operation
- Emergency call button enables instant one-touch emergency calls to dispatcher and other PoC devices
- Speeding and driver fatigue notifications



CLEAR AND BRIGHT DISPLAY

- The LCD display screen is easily visible even in bright sunlight



CELLULAR OPERATOR SMART SWITCH

- Supports two SIM cards and smart switching between operator networks to access the strongest signal strength for reliable communications



ANDROID OPERATING SYSTEM

- The MNC360 is powered by the Android mobile platform



BUILT-IN WI-FI

- Built-in Wi-Fi for flexible network access and using the MNC380 as a dispatch console



FLEXIBLE INTEGRATION

- With the standard API and SDK, the MNC360 communications capabilities can be integrated into mobile fleet management and telematics applications



RICH WITH ACCESSORIES

- 3.5mm audio jack for wired earpiece accessories
- Micro USB 2.0 port for connecting and powering a variety of external devices
- Built-in Bluetooth for hands-free microphones and other wireless accessories
- 2-pin port for an external loudspeaker

The MNC360 enables cost-effective fleet communications and dispatching with fast and easy deployments.

4G/LTE cellular networks provide reliable nationwide coverage that requires no investment in traditional radio network infrastructure or FCC frequency licensing.

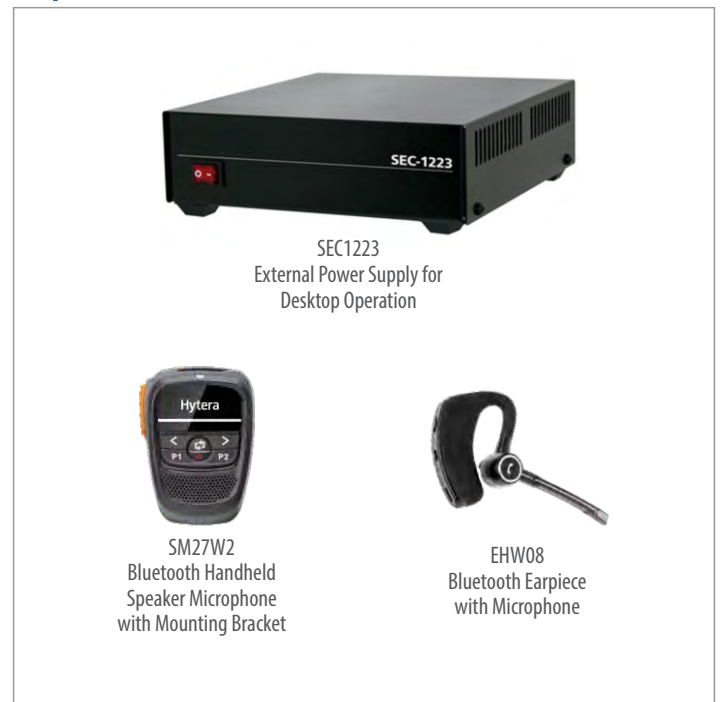
The MNC360 delivers instant nationwide group and individual calling right out of the box.



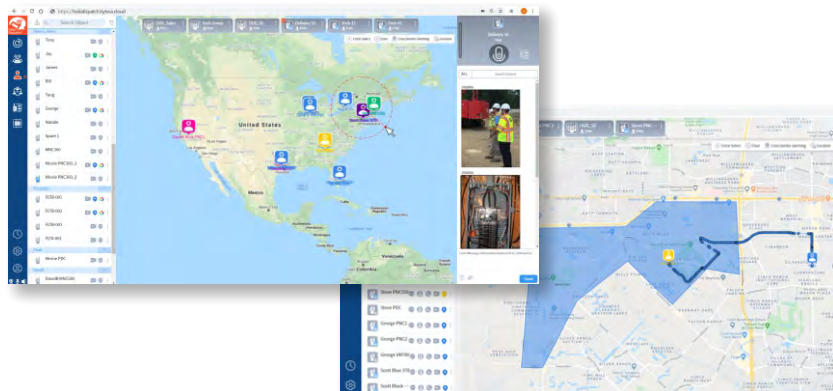
Standard Accessories



Optional Accessories



Hytera HALO Dispatch



Hytera HALO Dispatch is a powerful web-based dispatch application that supports instant group calling as well as flexible individual calling. Dynamic call groups can be quickly created with a simple list selection or geographically by selecting an area on the dispatch map. Hytera HALO Dispatch leverages the MNC360 GPS capabilities for tracking of driver locations and travel routes with time stamps. The dispatcher may stun (turn off) and reactivate a radio, receive and transmit emergency calls, and remotely access calls.

Target Markets

- Transportation, Shipping, and Logistics
- Education
- Security Services
- Taxi and Shuttle Services
- Construction, Plumbing, and Electrical
- Towing Companies
- Agriculture
- Landscaping Services
- Ambulances and EMTs
- Delivery Services



Specifications

General	
Weight	10.6oz (300g)
Dimensions (H x W x D)	6 5/8" x 2 5/8" x 1 1/2" (170 x 66 x 39mm)
Display	2" LCD 320x240
Operating System	Android 7.1
RAM Capacity	1GB
ROM Capacity	8GB
Input Voltage	9-25V DC
Speaker	4W
Operating Temperature	-22°F to +167°F (-30°C to +75°C)
Installed App	Hytera HALO
Port Interfaces	Two LTE antenna ports, 2-pin external speaker port, GPS antenna port, MicroUSB 2.0 connector, 3.5mm audio accessory port, secure 10-pin aviation port for handheld mic, power connector
Card Slots	Two Micro-SIM slots, TF Card slot (up to 128 GB)
Environmental	
Operating Temperature	-4° to +140° F (-20° to +60° C)
Storage Temperature	-4° to +185° F (-40° to +85° C)
ESD	IEC 61000-4-2, (ESD) ± 12 kV (air); ± 8 kV (contact)
IP Rating	IP54 for water and dust resistance

Standards and Frequencies	
LTE Frequency Bands	FDD-LTE: B1/B2/B3/B4/B5/B7/B8/B12/B13/B17/B20/B26/B28 TDD-LTE: B38/B39/B40/B41 (2496–2690 MHz) GSM: 850/900/1800/1900 WCDMA: B1/B2/B3/B4/B5/B8
Wi-Fi	2.4GHz 802.11b/g/n
Bluetooth	BT 4.2
Positioning System	GPS (A-GPS)/BDS
Certifications	FCC/CE/IC

Ordering Information

Part Number	Description
MNC360	Push-to-Talk PoC Mobile Radio