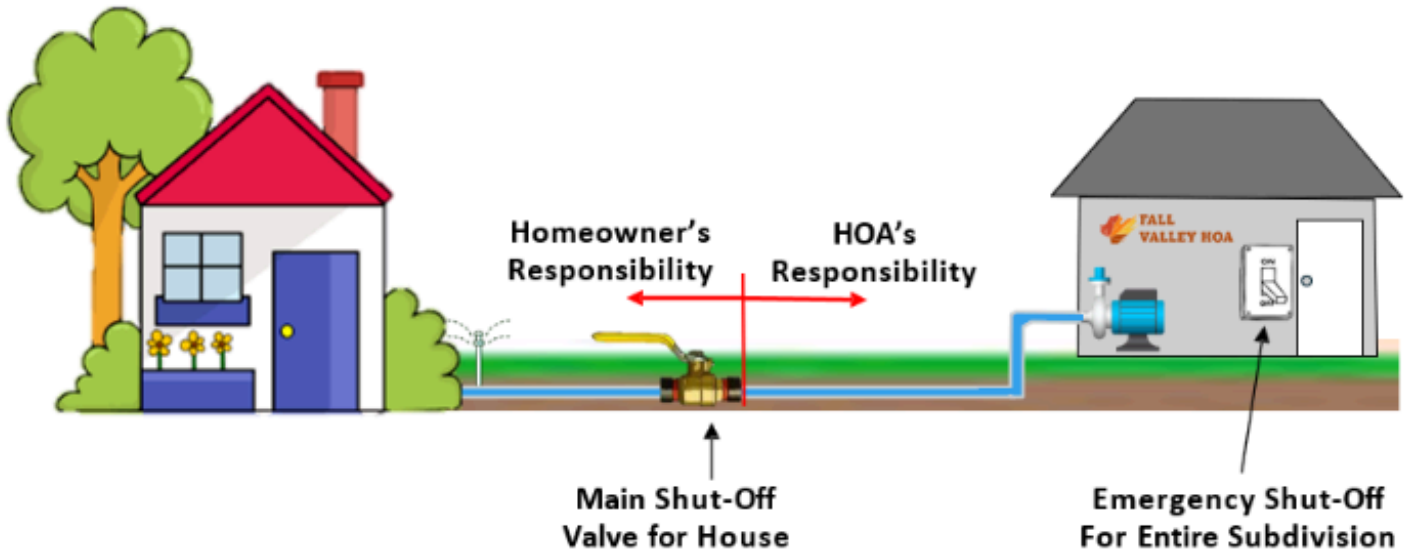


IRRIGATION & SPRING START-UP

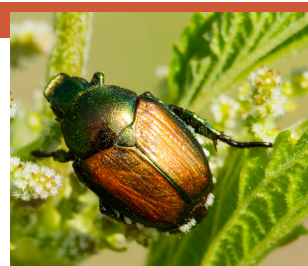
The irrigation canals begin filling around April 5th, but the initial water that comes through is very dirty, so we will wait a week or so before opening the system. Please help us by closing your main shut-off, and repairing anything needing attention. As a reminder, you are responsible for the irrigation line, from your main shut-off valve and onto your property. By closing the valve, this helps prevent a flood in your yard if you do have a broken head or line.



After a lot of research, discussion, and receiving multiple bids, our board has decided to hire Lush Green Lawn Care as our new lawncare and irrigation provider. We are excited to welcome them to Fall Valley, and look forward to a long partnership with them.

We have a suggested watering schedule on the following page. Although this isn't mandatory, by following this schedule (more or less), we can help ensure that all our owners have sufficient water pressure.

JAPANESE BEETLES



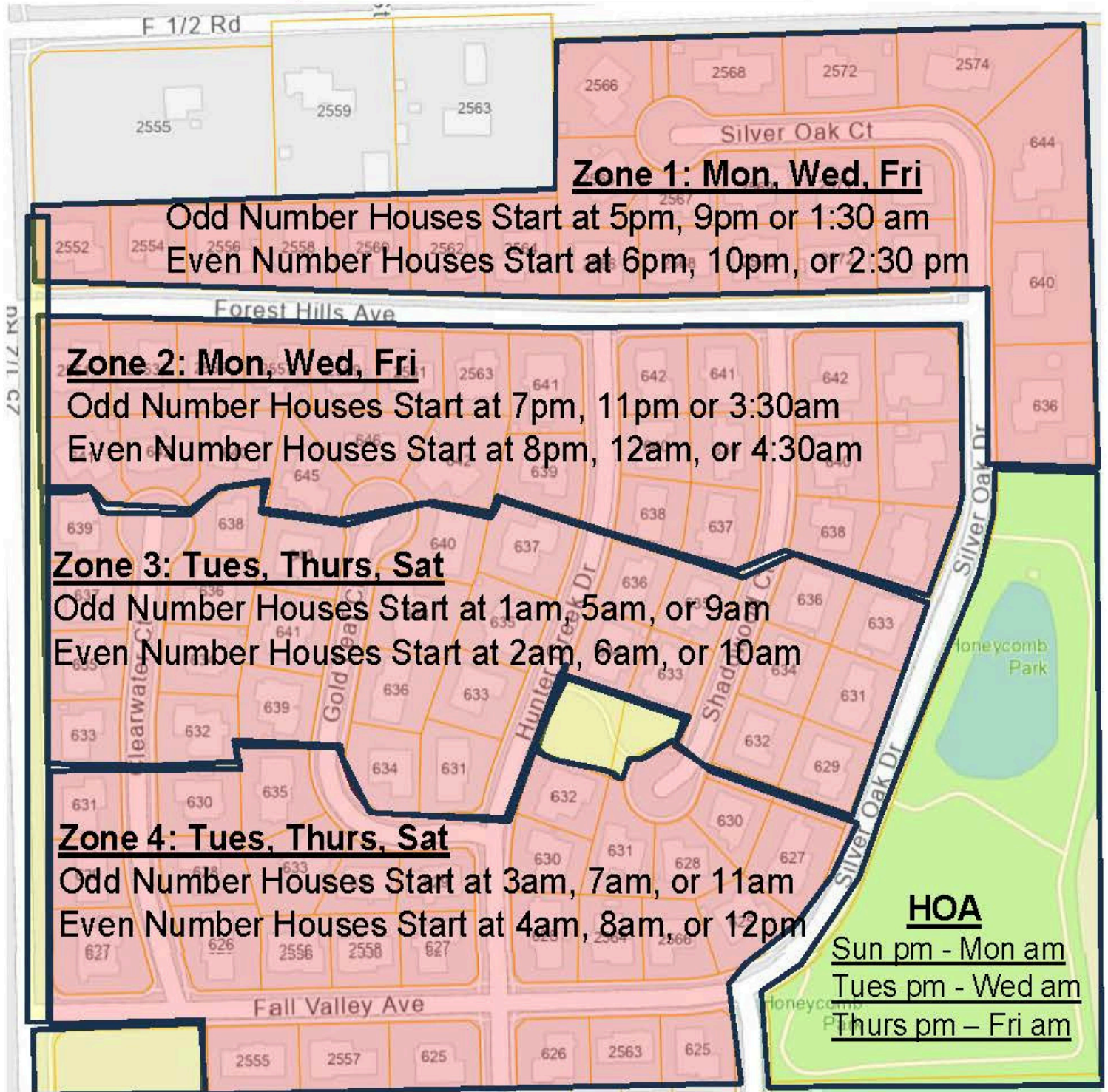
Mesa County is working to eradicate Japanese beetles in our area, and Fall Valley is now in the designated "hot zone." These beetles are highly destructive, and participation from homeowners is important. The County is offering free treatments, but homeowner consent is required. To participate or learn more, contact Mesa County at 970-902-3886 or jb@mesacounty.us I am also going to forward an email from them with more information.

STAY CONNECTED



Fall Valley HOA

Irrigation Watering Schedule



	Sun	Mon	Tues	Wed	Thurs	Fri	Sat
AM		HOA	Zone 3 Zone 4	HOA	Zone 3 Zone 4	HOA	Zone 3 Zone 4
PM	HOA	Zone 1 Zone 2	HOA	Zone 1 Zone 2	HOA	Zone 1 Zone 2	