

EMERGENCY ACTION PLAN

KIRKPATRICK DAM and RODMAN RESERVOIR
(National Inventory of Dams No. 100137)

Prepared for the
Florida Department of Environmental Protection
Office of Greenways and Trails
Allyce E. Green
(Dam Owner & Operator)



by
URS Corporation
Tampa



February 2007

EMERGENCY ACTION PLAN

Abridged Edition

Kirkpatrick Dam and Rodman Reservoir

(National Inventory of Dams No. FL00156)

Palatka, Florida

Prepared for the

**Florida Department of Environmental Protection
(Dam Owner & Operator)**

by

**URS Corporation
Tampa**

February 2007

Note: ✓ indicates that this section of the Emergency Action Plan is included in the Abridged Edition

TABLE OF CONTENTS

How to Use this Manual

✓ **Table of Contents**

Distribution of Manuals to Cooperating Entities

Record of Revisions to EAP Manual

PART 1 EMERGENCY PROCEDURES

✓ **Detection, Evaluation, and Classification of Emergency**

✓ **Sequence of Activity Diagram**

Response Protocol

✓ **Evaluation and Classification Guide Sheets**

✓ **Notification Flowchart and Contact Information Sheet**

Level 1 Actions to be Taken (Non-Failure Condition or Unusual Event)

High Water Level/Large Spillway Releases

Seepage

Embankment Deformation

Gate Malfunction/Failure

Unusual Instrument Reading

Structural/Electrical/Mechanical Problems

Sabotage and Miscellaneous Other Conditions

Level 2 Actions to be Taken (Potential Failure Developing)

High Water Level/Large Spillway Releases

Seepage

Embankment Deformation

Gate Malfunction/Failure

Unusual Instrument Reading

Structural/Electrical/Mechanical Problems

Sabotage and Miscellaneous Other Conditions

Level 3 Actions to be Taken (Imminent or Actual Failure)

High Water Level/Large Spillway Releases

Seepage

Embankment Deformation

Gate Malfunction/Failure

Unusual Instrument Reading

Structural/Electrical/Mechanical Problems

Sabotage and Miscellaneous Other Conditions

✓ **Flood Boundary Map**

PART 2 NON-EMERGENCY PLAN ELEMENTS

✓ **Statement of Purpose and Project Description**

✓ **Responsibilities**

Preparedness

PART 3 APPENDICES

Site Specific Conditions and Concerns

✓ **Plans for Training, Exercises, and Updating**

✓ **List of Properties in Inundation Areas**

Reporting Forms

Dam Failure Report (Abridged)

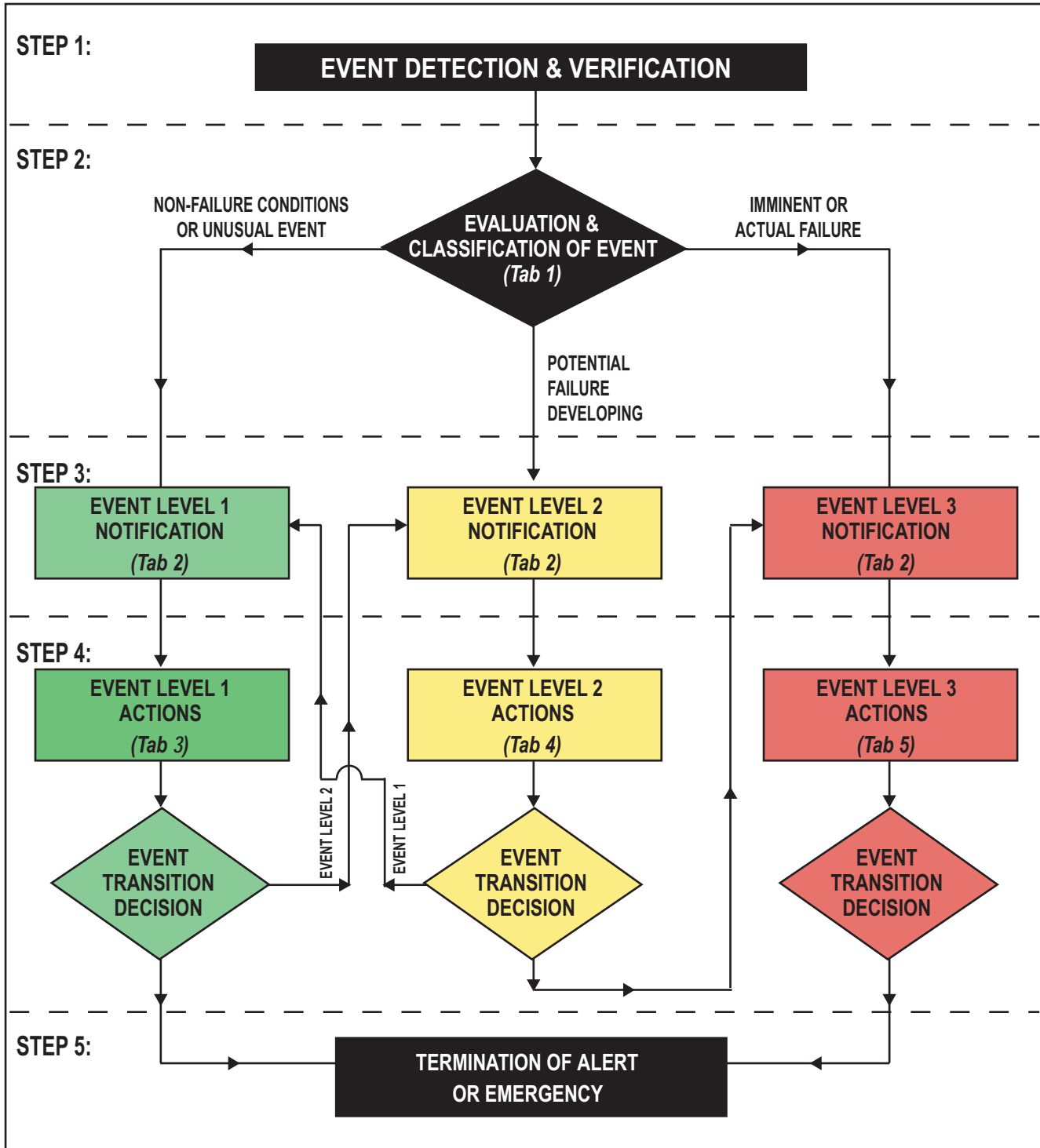
Record of Actual Events and Emergencies



PART 1 - EMERGENCY PROCEDURES

PART 1 - EMERGENCY PROCEDURES

SEQUENCE OF ACTIVITY DIAGRAM



EVALUATION AND CLASSIFICATION GUIDE SHEETS

Category	Description of Observed Condition	Level
High Water Level in Reservoir and/or Large Spillway Releases	Reservoir water level reaches Elev. 23.2 ft-NGVD.	1
	Unusually high spillway release resulting in water levels downstream of dam > Elev. 15 ft-NGVD expected to create downstream overbank flows and erosion.	1
	Reservoir water level reaches Elev. >23.2 ft-NGVD and waves are overtopping the embankment.	2
	Embankment overtopping occurring and reservoir level reaches Elev. 28.0 ft-NGVD.	3
Seepage	New seepage or sand boil(s) observed along downstream face/toe with no muddy/sandy discharge (migration of fines) and which appears to be stable with time.	1
	Localized new seepage or sand boil(s) observed along downstream face/toe with muddy/sandy discharge (migration of fines) and increasing but controllable discharge of water is observed.	2
	Multiple/extensive seepage or sand boil(s) observed along downstream face/toe rapidly increasing in size or number and/or rapidly increasing flows. Rapidly increasing seepage transporting large amount of sediments. An uncontrollable discharge of water with an upstream whirlpool or other signs of rapidly draining reservoir.	3
Embankment Deformation	Cracks	
	New longitudinal (along the embankment) or transverse (across the embankment) cracks less than 6 inch depth which appears stable with time.	1
	Longitudinal (along the embankment) or transverse (across the embankment) cracks more than 6 inch depth, or more than 3 inches vertical displacement, or increasing with time. New concave cracks on or near the embankment/berm crest associated with slope movement. No water flow observed.	2
	Transverse cracks across the embankment crest more than 6 inch depth in which water flow is observed eroding embankment/berm material.	3
	Slides/Erosion	
	Shallow slough/slide/slump/erosion on the embankment/berm slope up to 2 ft max depth which appears stable with time.	1
	Deep slide/erosion (greater than 2 ft depth) on the embankment which may also extend beyond the embankment toe but does not encroach into the embankment crest and crest appears stable with time.	2
	Deep slide/erosion (greater than 2 ft depth) on the embankment which encroaches into the embankment crest or the crest appears unstable.	3
	Sinkholes and Surface Depressions	
	New sinkhole forming within 500 feet distant from the embankment toe.	1
	Small depression observed on the embankment/berm up to 2 ft deep and/or 5 ft wide which appears stable with time.	1
	Sinkhole or sharp depression observed on the embankment/berm or within 50 ft of the embankment toe that is less than 4 ft deep and 15 ft wide or which is increasing with time.	2
	Sinkhole or sharp depression observed on the embankment/berm or within 50 ft of the embankment toe that is greater than 4 ft deep or 15 ft wide or rapidly developing conditions such that failure is expected.	3
Level Definitions:	LEVEL 1 Non-Failure Condition or Unusual Event (Internal Alert) LEVEL 2 Potential Failure Developing (Emergency Condition) LEVEL 3 Imminent or Actual Failure (Emergency Condition)	

After appropriate Event Level has been determined, GO TO TAB 2 Immediately

NOTE: It is possible that a combination of adverse situations may occur simultaneously or sequentially. The aggregate effect of such combinations must be taken into consideration in determining the appropriate Event Level classification.

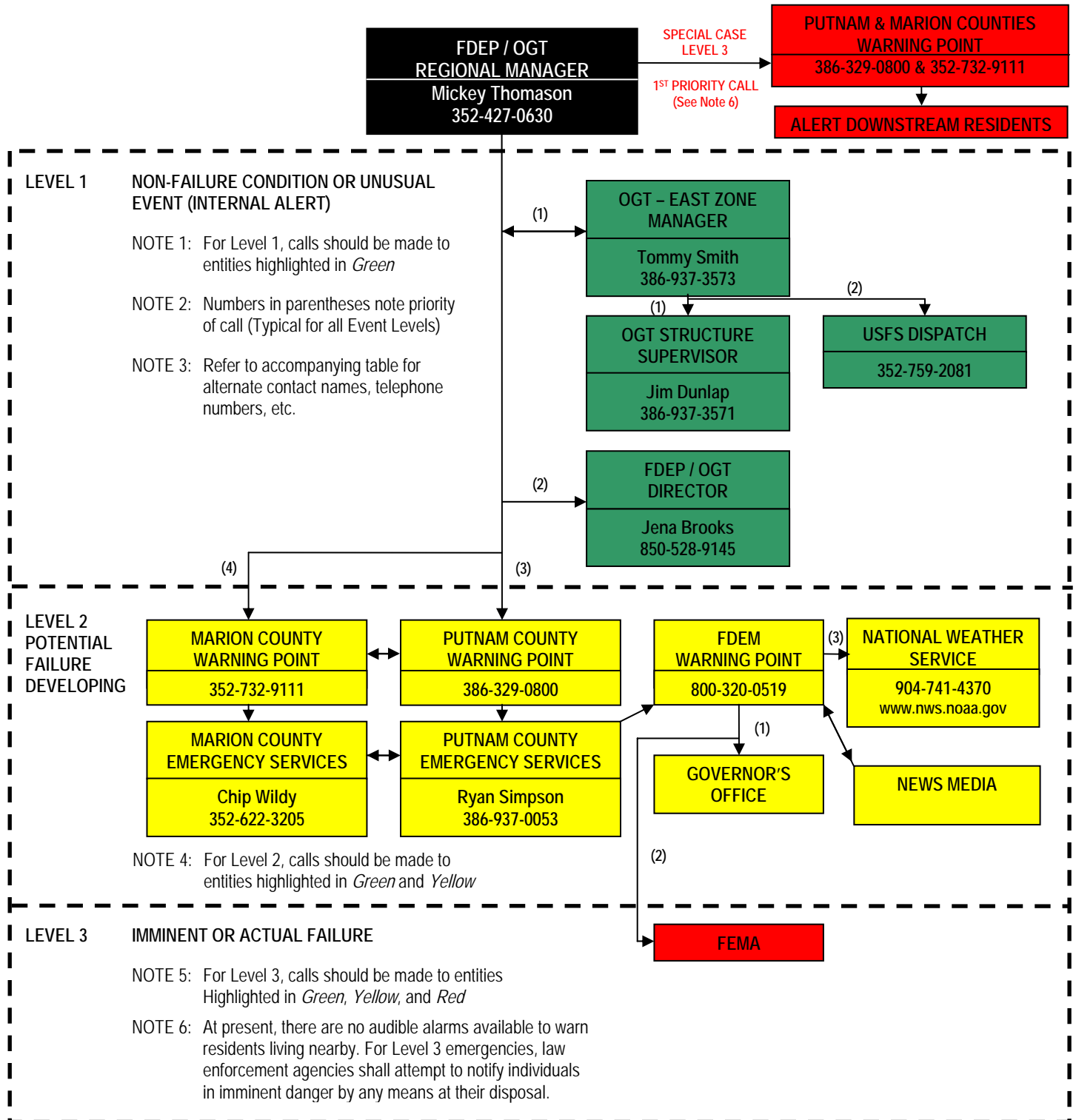
EVALUATION AND CLASSIFICATION GUIDE SHEETS

Category	Description of Observed Condition	Level
Gate Malfunction or Failure	Spillway gate(s) inoperable during non-flooding or non-emergency conditions.	1
	Spillway gate(s) damaged structurally (sabotage, debris, etc) negligible release of water and condition appears stable.	1
	Spillway gate(s) inoperable during flooding and/or emergency conditions.	2
	One or more spillway gate(s) are destroyed (sabotage, debris, etc) resulting in uncontrolled release of water and conditions appear stable.	2
	One or more spillway gates are destroyed (sabotage, debris, etc) resulting in uncontrolled release of water and unstable or rapidly deteriorating conditions exist.	3
Unusual Instrument Reading	Telemetry system dysfunctional.	1
	Unexplained rapid change (>0.15 feet/hour) in upstream water level is observed.	1
	Unexplained rapid change (>0.25 feet/hour) in upstream water level is observed.	2
Structural/ Electrical/ Mechanical Problems	Electrical power system disabled or destroyed and backup system inoperable.	1
	Significant new or enlarged cracks or offsets observed on spillway structure - condition appears stable with time.	1
	Significant new or enlarged cracks or offsets observed on spillway structure - condition appears unstable.	2
	Rapidly increasing cracks or offsets with water flowing through cracks between the embankment and concrete structure (soil erosion is occurring).	3
Sabotage and Miscellaneous Other Conditions		
	Oil/hazardous material spill or release.	1
	Wildfire or structure fire.	1
	Security or warning systems inoperable.	1
	Criminal action with minor damage to embankment or structures where time is available before there are adverse impacts to the integrity of the facility.	1
	Criminal action with significant damage to embankment or structures where significant repairs are required and the integrity of the facility is compromised - condition appears stable with time.	2
	Criminal action with significant damage to embankment or structures with rapidly progressing adverse impacts and little or no time for repairs - failure is imminent.	3
Level Definitions:	LEVEL 1 Non-Failure Condition or Unusual Event (Internal Alert) LEVEL 2 Potential Failure Developing (Emergency Condition) LEVEL 3 Imminent or Actual Failure (Emergency Condition)	

After appropriate Event Level has been determined, GO TO TAB 2 Immediately

NOTE: It is possible that a combination of adverse situations may occur simultaneously or sequentially. The aggregate effect of such combinations must be taken into consideration in determining the appropriate Event Level classification.

NOTIFICATION FLOW CHART

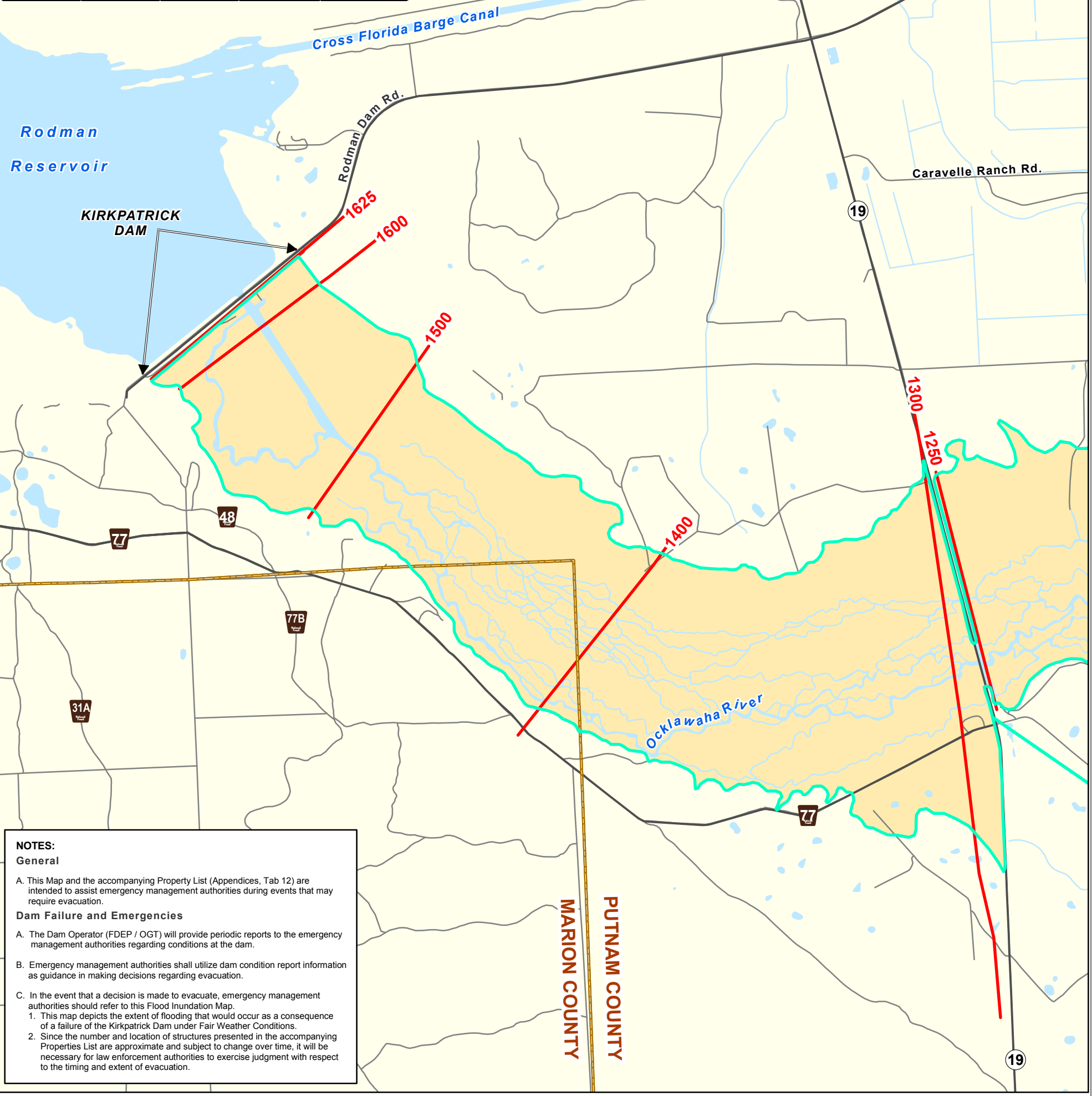


AFTER NOTIFICATION PROCESS IS COMPLETE, PROCEED TO STEP 4 ACTIVITIES:

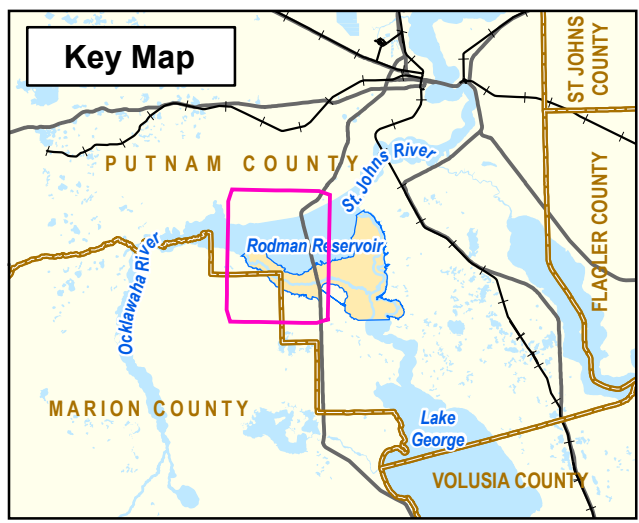
- If Level 1 Condition Declared: Go to TAB 3
- If Level 2 Condition Declared: Go to TAB 4
- If Level 3 Condition Declared: Go to TAB 5

X-Section	River Mile ¹	Peak Conditions		Initial
		Floodwave Elevation (ft. NGVD)	Floodwave Arrival Time ² (hrs)	Floodwave Arrival Time ³ (hrs)
1625	19.06	13.50	10	0.5
1600	18.86	13.50	10	0.5
1500	18.03	12.80	16	1.5
1400	16.35	11.60	18	4
1300	14.00	10.30	19	7
1250	13.82	9.50	21	8
1200	12.63	6.90	23	10
1100	10.74	4.60	27	13
1000	7.90	2.70	32	20
900	4.41	2.60	33	22

1 - RM = 0 at Buffalo Bluff Bridge
 2 - Time relative to initiation of failure
 3 - Time that water level begins to rise, relative to initiation of failure



NOTES:
General
 A. This Map and the accompanying Property List (Appendices, Tab 12) are intended to assist emergency management authorities during events that may require evacuation.
Dam Failure and Emergencies
 A. The Dam Operator (FDEP / OGT) will provide periodic reports to the emergency management authorities regarding conditions at the dam.
 B. Emergency management authorities shall utilize dam condition report information as guidance in making decisions regarding evacuation.
 C. In the event that a decision is made to evacuate, emergency management authorities should refer to this Flood Inundation Map.
 1. This map depicts the extent of flooding that would occur as a consequence of a failure of the Kirkpatrick Dam under Fair Weather Conditions.
 2. Since the number and location of structures presented in the accompanying Properties List are approximate and subject to change over time, it will be necessary for law enforcement authorities to exercise judgment with respect to the timing and extent of evacuation.




**DAM FAILURE FLOOD BOUNDARY MAP
 FAIR WEATHER FAILURE**

Sources:
 A. Hydrography and road data from the Florida Geographic Data Library (FGDL), Version 2004.
 B. Floodplain boundary, cross section locations and floodwave timing from modeling conducted by URS Corporation, Aug, 2005.

Limitations:
 A. The inundation boundary shown on this map represents the estimated Sunnyday dam failure flood area. Refer to the appendices for a summary of the flood inundation analysis conducted for this facility.
 B. The inundation boundary depicted on this map reflects the effect of normal high tide levels only and therefore does not reflect the effects of storm induced surges.
 C. This map was developed using current hydraulic computational and analysis methods and procedures. As in any computational analysis, assumptions and other factors may affect accuracy. Therefore, the limits of flooding and flood wave travel times are approximate and are intended only as a guideline for establishing evacuation zones. Actual areas and time of inundation will depend on specific dam failure mechanisms(s), meteorological conditions and other factors and may differ from areas shown on the map.





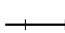
**Kirkpatrick Dam and Rodman Reservoir
 Emergency Action Plan**


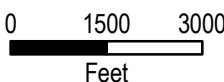
Florida Department of Environmental Protection

URS 

Sheet 1 of 2

Legend

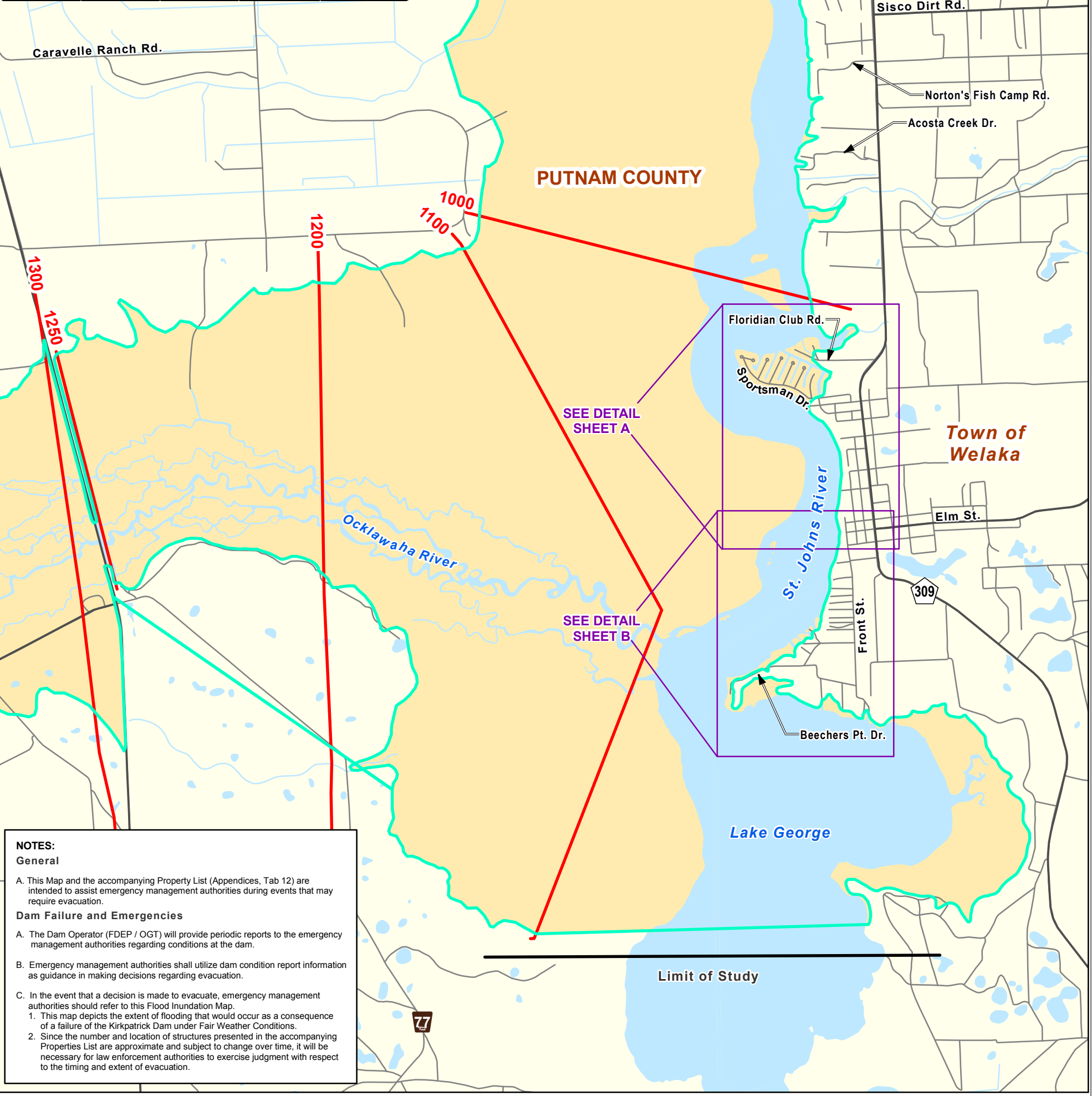
- 2000 Cross Section with ID
-  Sunnyday Flood Boundary
-  Hydrography
-  Major Road
-  Minor Road
-  Railroad

H:\projects\12005007_Rodman\Applications\mxd\EAP_planimetric_Bsize.mxd

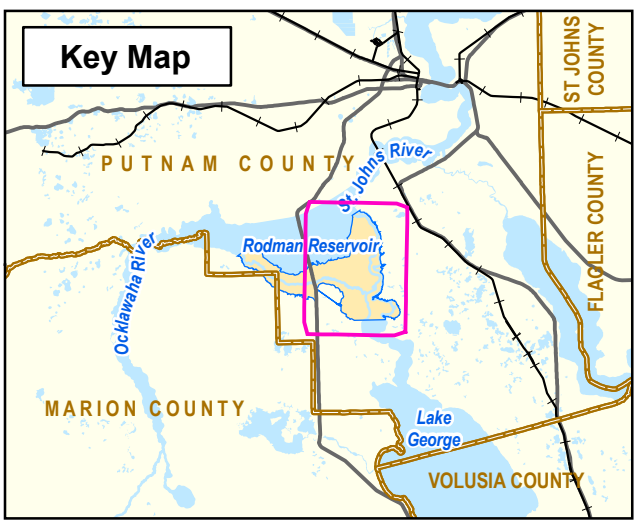
X-Section	River Mile ¹	Peak Conditions		Initial
		Floodwave Elevation (ft. NGVD)	Floodwave Arrival Time ² (hrs)	Floodwave Arrival Time ³ (hrs)
1625	19.06	13.50	10	0.5
1600	18.86	13.50	10	0.5
1500	18.03	12.80	16	1.5
1400	16.35	11.60	18	4
1300	14.00	10.30	19	7
1250	13.82	9.50	21	8
1200	12.63	6.90	23	10
1100	10.74	4.60	27	13
1000	7.90	2.70	32	20
900	4.41	2.60	33	22

1 - RM = 0 at Buffalo Bluff Bridge
2 - Time relative to initiation of failure
3 - Time that water level begins to rise, relative to initiation of failure



NOTES:
General
A. This Map and the accompanying Property List (Appendices, Tab 12) are intended to assist emergency management authorities during events that may require evacuation.

Dam Failure and Emergencies
A. The Dam Operator (FDEP / OGT) will provide periodic reports to the emergency management authorities regarding conditions at the dam.
B. Emergency management authorities shall utilize dam condition report information as guidance in making decisions regarding evacuation.
C. In the event that a decision is made to evacuate, emergency management authorities should refer to this Flood Inundation Map.
1. This map depicts the extent of flooding that would occur as a consequence of a failure of the Kirkpatrick Dam under Fair Weather Conditions.
2. Since the number and location of structures presented in the accompanying Properties List are approximate and subject to change over time, it will be necessary for law enforcement authorities to exercise judgment with respect to the timing and extent of evacuation.




**DAM FAILURE FLOOD BOUNDARY MAP
FAIR WEATHER FAILURE**

Sources:
A. Hydrography and road data from the Florida Geographic Data Library (FGDL), Version 2004.
B. Floodplain boundary, cross section locations and floodwave timing from modeling conducted by URS Corporation, Aug, 2005.

Limitations:
A. The inundation boundary shown on this map represents the estimated Sunnyday dam failure flood area. Refer to the appendices for a summary of the flood inundation analysis conducted for this facility.
B. The inundation boundary depicted on this map reflects the effect of normal high tide levels only and therefore does not reflect the effects of storm induced surges.
C. This map was developed using current hydraulic computational and analysis methods and procedures. As in any computational analysis, assumptions and other factors may affect accuracy. Therefore, the limits of flooding and flood wave travel times are approximate and are intended only as a guideline for establishing evacuation zones. Actual areas and time of inundation will depend on specific dam failure mechanisms(s), meteorological conditions and other factors and may differ from areas shown on the map.

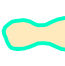



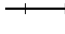
**Kirkpatrick Dam and Rodman Reservoir
Emergency Action Plan**


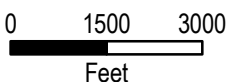
Florida Department of Environmental Protection

URS 

Sheet 2 of 2

Legend

- 2000 Cross Section with ID
-  Sunnyday Flood Boundary
-  Hydrography
-  Major Road
-  Minor Road
-  Railroad

H:\projects\12005007_Rodman\Applications\mxd\EAP_planimetric_Bsize.mxd

H:\projects\12005007_Rodman\Applications\mxd\EAP_detail_area_Bsize_raster.mxd



DETAIL SHEET A


DAM FAILURE FLOOD BOUNDARY MAP FAIR WEATHER FAILURE

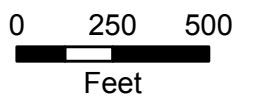
Kirkpatrick Dam and Rodman Reservoir
Emergency Action Plan

Florida Department of Environmental Protection



Legend

 Sunnyday Flood Boundary



H:\projects\12005007_Rodman\Applications\mxd\EAP_detail_area_Bsize_raster.mxd



DETAIL SHEET B


DAM FAILURE FLOOD BOUNDARY MAP FAIR WEATHER FAILURE

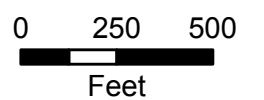
Kirkpatrick Dam and Rodman Reservoir
Emergency Action Plan

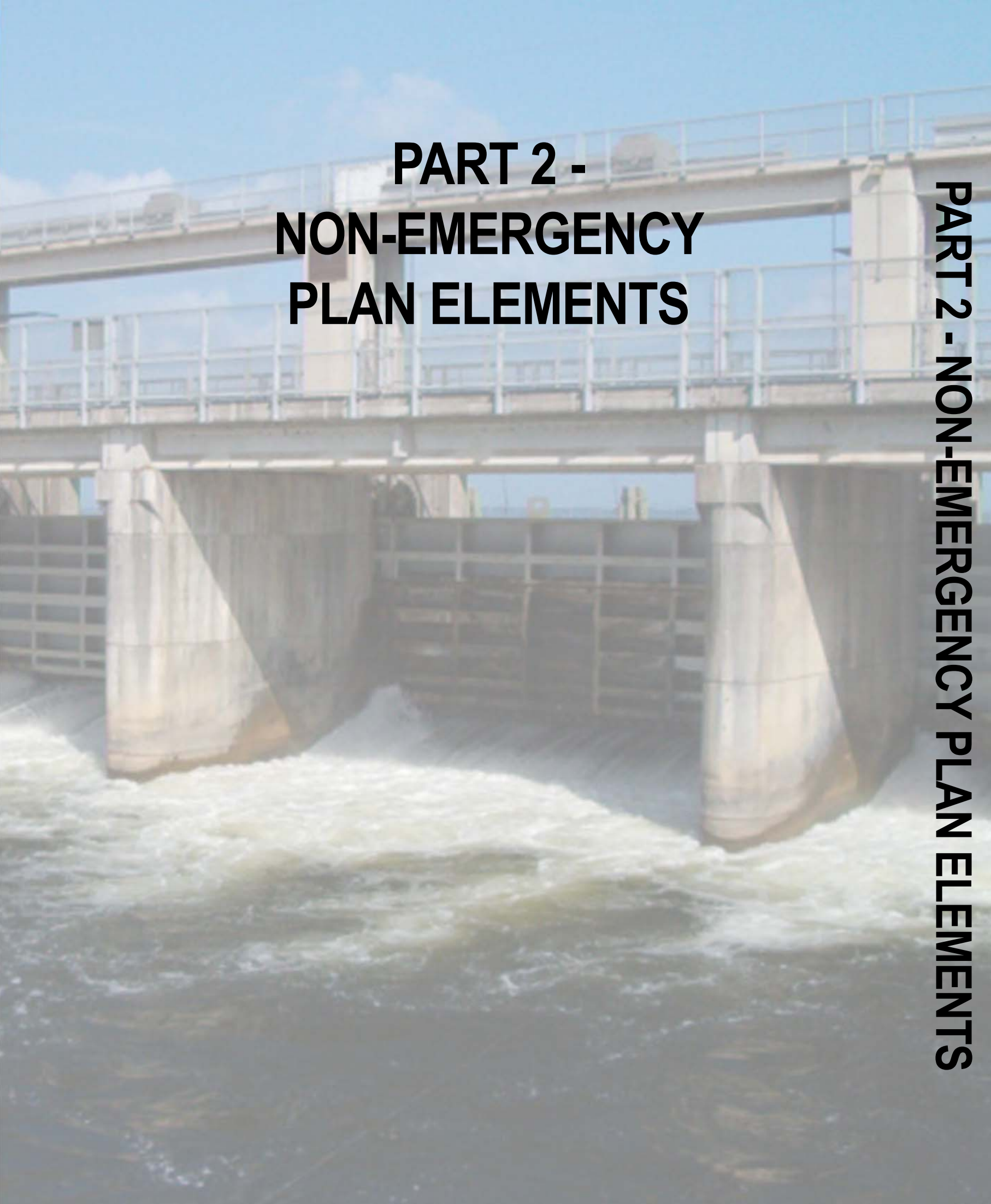
Florida Department of Environmental Protection



Legend

 Sunnyday Flood Boundary





**PART 2 -
NON-EMERGENCY
PLAN ELEMENTS**

PART 2 - NON-EMERGENCY PLAN ELEMENTS

Statement of Purpose

This Emergency Action Plan (EAP) identifies potential emergency or unusual conditions at the Kirkpatrick Dam and Rodman Reservoir and specifies actions to be followed to reduce the risk of property damage and loss of life. More specifically, this plan:

- Identifies a procedure to guide the Florida Department of Environmental Protection, FDEP (dam co-owner), Office of Greenways and Trails, OGT (dam operator), and the U.S. Forest Service (dam co-owner) in assessing the nature, severity, and urgency of problems at the dam.
- Identifies procedures to assist the dam operator in notifying the public, law enforcement and other emergency management agencies, dam owner, and key management and operations personnel regarding emergency conditions at the dam.
- Specifies actions that the OGT should take to moderate or alleviate problems at the dam.
- Contains inundation maps depicting areas of greatest concern for emergency management authorities and a list of properties located in the areas of likely inundation if the dam were to fail under fair weather conditions.

Warning and evacuation planning and implementation are the responsibility of local and state authorities having jurisdiction in areas that would be inundated by flooding caused by dam failure or by large releases of water or for other hazardous situations related to the dam. This plan does not address areas of inundation caused by coastal flooding due to storm surges.

Project Description

The Kirkpatrick Dam and Rodman Reservoir are part of the Cross Florida Barge Canal system that was partially constructed in the 1960's and later abandoned in the early 1970's. Authorized by the U.S. Congress during the 1940's, the project was intended to facilitate the movement of ocean going vessels traveling between the Atlantic Ocean and the Gulf of Mexico, the Caribbean Sea, and the Panama Canal. The Barge Canal facilities were designed by the U.S. Army Corps of Engineers. Significant elements of the overall project completed by the Corps included: 1) the portion of the canal from the Gulf of Mexico to the Inglis Lock; 2) the Inglis Lock; the Inglis (Lake Rousseau) Dam; 3) the Lock Bypass Channel and Dam; 4) the Rodman (Kirkpatrick) Dam; 5) the Eureka Lock and Dam; and the 6) St. John's (Buckman) Lock.

Construction of the Barge Canal system was halted during the Nixon administration in 1971 because of concerns related to cost and the project's effect on the environment. Although construction activities ended more than three decades ago, it was not until 1990 that the official construction de-authorization was approved by Congress and signed by President Bush (after an extensive study by the Corps of Engineers). Subsequent to its de-authorization, the Kirkpatrick Dam and associated facilities became part of the Cross Florida Greenway State Recreation and Conservation Area that was established by the Florida State Legislature through the enactment of a law (F.S. 90-328). Currently, the Cross Florida Barge Canal facilities are known as the Marjorie Harris Carr Cross Florida Greenway and are managed by the Office of Greenways and

Trails. Kirkpatrick Dam is jointly owned by the Florida Department of Environmental Protection (FDEP) and the U.S. Forest Service (USFS) and operated by FDEP's Office of Greenways and Trails (OGT). The USFS owns the portion of the dam from the historic river channel southward.

Pertinent Information Regarding the Kirkpatrick Dam and Rodman Reservoir

Item	Description
Dam Name	Kirkpatrick Dam/ Rodman Reservoir
Dam Former Name	Rodman dam and Spillway
State	Florida
National Inventory of Dams ID	FL00156
Longitude/Latitude	-81.6900/ 29.4700
Geodetic Location	Sec 28, 29/ T 11S/ R25E
County	Putnam
Physical Location	14 miles southwest of Palatka
River	Ocklawaha River
Owner Name	Florida Department of Environmental Protection
Designer/Constructor	U.S. Army Corps of Engineers
Year Constructed	1968
Kirkpatrick Dam and Spillway	<ul style="list-style-type: none"> • Earthen Embankment: <ul style="list-style-type: none"> – Length 7,200 ft – Top Elevation 28 ft-NGVD – Crown Width 20 ft – Average Height 22 ft – Side Slopes: <ul style="list-style-type: none"> Pool Side 10:1 Land Side 4:1 • Sloping Apron Elev. (-)3.0 ft-NGVD to (-)15.0 ft-NGVD • Spillway: <ul style="list-style-type: none"> – Hydraulic Design Condition: <ul style="list-style-type: none"> Discharge 36,300 cfs Headwater Elev.(max) 23.2 ft-NGVD Tailwater Elev. 16.0 ft-NGVD – Crest: <ul style="list-style-type: none"> Shape Ogee Elevation 6.0 ft-NGVD Net Length 160 ft. – Control Gates: <ul style="list-style-type: none"> Number 4 Width x Height 40 ft x 15.0 ft.
Rodman Reservoir Features	<ul style="list-style-type: none"> • Length 16.4 mi • Surface Area 20.3 mi² • Normal Pool 20.0 ft-NGVD • Maximum Pool Elevation 23.2 ft-NGVD • Drainage Area 2,747 mi² • Volume (normal Pool) 82,000 ac-ft
Hazard Classification (by FEMA)	Low
Downstream Communities	Town of Welaka, Town of Satsuma
Upstream Dam	Moss Bluff Lock and Spillway

Refer to accompanying Photographs, Study Area and Site Features Map, General Layout Plan and Aerial Photo of Kirkpatrick Dam.

Date of Photography: 2006



Spillway Structure – Lake Side



Spillway Structure – Tailwater Side



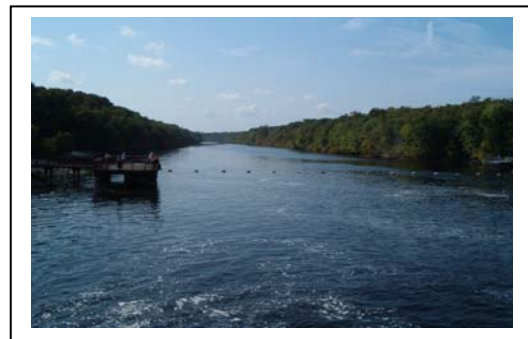
Downstream Embankment
Looking Generally West from Spillway



Downstream Embankment
Looking Generally East from Near
Spillway



Upstream Embankment
Looking Generally East from Near West
End of Embankment



Discharge Channel from Spillway

the technical staff of the OGT. Access to others is at the discretion of the OGT Regional Manager).

- The road travel distance between the OGT Buckman Lock Office and the dam facilities at Rodman Reservoir is approximately five (5) miles. The normal travel time during good weather in non-emergency conditions is about ten (10) minutes.

Responsibility for Assessment of Unusual and Emergency Conditions (FDEP)

- The responsibility for assessing conditions at the dam after an unusual or emergency event or condition has been detected lies with the OGT.
- After it becomes known that a problem has occurred or is occurring, the OGT will dispatch one or more staff members to the facility. Upon arriving, the inspector will make an assessment of the situation and immediately relay it to the East Zone Manager or his designee. The East Zone Manager will then consult the Event Detection, Evaluation, and Classification Guide Sheets in the EAP Manual (**Tab 1**) and make a determination regarding the severity and urgency of the problem and will declare the condition to be Level 1, 2, or 3. The East Zone Manager will then notify the Regional Manager and provide a report of the conditions encountered. In the event of a Level 3 Event (Imminent or Actual Failure) the inspector will immediately notify the Regional Manager.
- It is possible that reliable information about a developing situation at the facility will be available before representatives of the OGT arrive at the scene. For example, credible information could come from a law enforcement officer, a representative of the OGT that works at another office, or local volunteer fire department personnel. Should credible information about conditions be received at the OGT and should this information reveal that an emergency condition (Level 2 or 3) has occurred or is in the process of occurring, the Regional Manager may make an Event Level declaration decision in advance of receiving a report from the dispatched OGT inspector(s).
- After the Event Level has been determined, the process of Notification will commence (see below).

Responsibility for Notification (Cooperating Entities)

- Notification is a shared responsibility.
- The responsibility is shared by the Cooperating Entities, but it is initiated by the Dam Operator in all Event Level cases. Specifically, the OGT Regional Manager is responsible for making the first calls. This includes calls to the county emergency management authorities and to the Director of the OGT, as appropriate, for the specific Event Level 1, 2 or 3.
- After the initial calls are made, the entities receiving those calls are responsible for making additional calls, as appropriate.

- The process of notification is depicted on the Notification Flowchart (**Tab 2**). The flowchart provides the names of individuals and/or telephone numbers. Also included is a table listing alternate contact information should the primary contact person or number not be available or accessible. A Notification Checklist is provided with the Reporting Forms (**Tab 13**) to document the date and time for which contacts were made.
- The public information offices for each of the emergency management offices should communicate regularly to make sure all departments have consistent information. However, the intent is to have one voice that communicates directly with the news media and general public. The Notification Flowchart indicates that the FDEM is responsible for disseminating information to the news media and the general public.
- After the various Cooperating Entities have been notified, the process for taking action with respect to evacuation and with respect to corrective actions at the facility will commence (see Responsibility for Evacuation and Responsibility for Emergency Action at the Dam below).
- The Dam Operator is responsible for updating and confirming the current status of the Event Level and specific conditions to Cooperating Entities at regular intervals during any emergency.

Responsibility for Evacuation
(Putnam County and Marion County Sheriff's Offices)

- The responsibility for evacuation lies with local authorities having statutory authority. There is at least one possible exception to the general case:
 - If a catastrophic failure occurs at the Kirkpatrick Dam, it may be necessary for the OGT's Regional Manager to issue an immediate warning to residents located immediately downstream of the dam, i.e., the segment of the Ocklawaha River lying between the Kirkpatrick Dam and Lake George. At present, there are no audible alarms available to warn residents living nearby. For Level 3 emergencies, the OGT and law enforcement agencies shall attempt to notify individuals in imminent danger by any means at their disposal.
- For Putnam County, the local authorities include the Sheriff and the Emergency Management Director.
- For Marion County, the local authorities include the Sheriff and the Emergency Management Coordinator.
- The local authorities having jurisdiction should rely on the following information in making evacuation decisions:
 - **As to the Timing of the Evacuation:**
 - Reports from the Dam Operator regarding conditions at the facility. It is the intent of this EAP to have the Dam Operator issue these reports to the authorities as frequently as conditions warrant and allow. The reports to the authorities will be provided by the OGT in the person of the Regional Manager, the OGT Director, or a designee.
 - **As to the Extent of the Evacuation:**
 - Reports from the Dam Operator regarding the severity and urgency of the problem(s) that have occurred or are occurring at the facility.

- The Flood Boundary Maps (**Tab 6**). The maps: 1) depict the probable area of inundation associated with a failure of Kirkpatrick Dam; 2) identify the estimated time when flood levels begin to rise (Initial Floodwave Arrival Time) in response to a dam failure and the subsequent peak water elevation (Peak Floodwave Elevation) and time of occurrence (Peak Floodwave Arrival Time) at several locations (Cross-Sections) throughout the inundation area; and 3) identify the principal roadways in the area that could be used for evacuation.
- The List of Properties (**Tab 12**) in the Inundation Area is based on data collected from the property appraiser's office as follows: May 2005 for Marion County and November 2005 for Putnam County. The List Of Properties table includes the following information: 1) identification numbers; 2) owner names and addresses; 3) cross-section ID numbers; 4) the estimated peak flood elevation; 5) the length of time estimated for floodwaters to reach peak elevation; and 5) the length of time estimated for the initial floodwave to begin raising the water level adjacent to the parcel.

Responsibility for Emergency Actions at the Dam **(FDEP)**

- The responsibility for monitoring conditions and taking corrective action at the facility rests with the Dam Operator.
- Upon completion of the evaluation process that leads to the classification of the Event Level and the initial Notification calls, the Regional Manager will begin the process of dispatching work crews consisting of experienced OGT staff members (and possibly contractors) to the facility, as circumstances warrant.
- The responding OGT staff and work crews will be guided by procedures contained in this EAP and by other FDEP technical support personnel that may be called upon to further evaluate emergency conditions. The procedures are presented according to the Event Level designated by the OGT Regional Manager (or his designee) and according to the category of event as summarized below:
 - **Event Levels**
 - Level 1 (**Tab 3**)
 - Level 2 (**Tab 4**)
 - Level 3 (**Tab 5**)
 - **Categories of Events**
 - High Water Level/Large Spillway Releases
 - Seepage
 - Embankment Deformation
 - Gate Malfunction/Failure
 - Unusual Instrument Reading
 - Structural/Electrical/Mechanical Problems
 - Sabotage and Miscellaneous Other Conditions

Responsibility for Downgrading or Terminating an Emergency Declaration and Conducting Post-Event Evaluations (FDEP)

- The responsibility for downgrading the Event Level or declaring the end of an unusual or emergency condition rests with the Dam Operator. The downgrading or formal declaration of event termination will be made by the Director of OGT based on the recommendation of the OGT Regional Manager. *The termination declaration will be made in cooperation with the FDEP and local emergency management authorities.*
- The termination of an event will be declared after conditions improve to the point that there is no longer a potential threat to the public from flooding caused by dam failure. The general sequence of activities related to the EAP process, including termination of an event, is depicted on the exhibit titled Sequence of Activity Diagram (refer to the section titled **How to Use this Manual and Tab 1**).
- The declaration of termination will be followed by a comprehensive evaluation of all of the activities surrounding the event. The purpose of the evaluation will be to assess the effectiveness of actions taken and the usefulness of procedures contained in the EAP.
- The post-event evaluation (After Action Report) will be conducted by the OGT Director. The exact scope of the evaluation will be at the Director's discretion, but will generally include the following:
 - Review of Incident Reports
 - Interviews with FDEP staff assigned to specific response activities.
 - Interviews with Cooperating Entities, particularly representatives of the Putnam and Marion County Sheriff's Offices and Emergency Management Departments.
 - Review the consistency and effectiveness of the communications between cooperating entities, the Emergency Management Departments, the news media and the general public.
 - Review of reports by consulting engineers who may have participated in response activities.
 - Review the performance of in-house construction staff and sub-contractors who may have participated in response activities.
 - The findings of the evaluation will be presented in a report, including recommendations for modification to the content of the EAP, as may be required.

Responsibility for EAP Training, Exercises, and Annual Updates (FDEP)

- The responsibility for conducting training and exercises, performing annual updates to the EAP Manual, and addressing questions that arise about the plan rests with the EAP Coordinator.
- The EAP Coordinator is the OGT Regional Manager, Florida Department of Environmental Protection, Sharpes Ferry Office, Ocala, Florida.



PART 3 - APPENDICES

PART 3 - APPENDICES

Plans for Training, Exercising, and Updating

Training

Training of the personnel who may be called upon to implement the Kirkpatrick Dam EAP is necessary to ensure their familiarity with the process, procedures, responsibilities and resources that make up its elements. The following is pertinent:

- The Florida Department of Environmental Protection is responsible for organizing regular training sessions and maintaining a record of all participants.
- Routine training and testing of the EAP is not only essential to ensure the proper implementation of the plan, but will also serve as a means to regularly assess its adequacy.
- The type and extent of training will depend on the roles and responsibilities of individuals and agencies involved in the plan's implementation.
 - Individuals employed by FDEP who have a technical background and who will have the primary responsibility for implementing the plan will receive the most comprehensive training. This will include a thorough review of the background and design of the facilities, as well as procedures for event detection, evaluation, and classification, and detailed response activities.
 - Individuals employed by Cooperating Entities will receive a general introduction to the facilities in question, the terminology used in the plan, and implementation procedures, with particular emphasis given to event notification protocols and response activities.
- It is important that a sufficient number of individuals be trained to ensure adequate coverage during an unusual event or emergency.
- The Federal Emergency Management Agency (FEMA) has developed a series of training sessions (video tapes) that introduce basic evaluation and detection measures for embankment dams, as well as more general dam safety training. Similarly, the Association of Dam Safety Officials (AADSO) has developed training aids, workshops, guidelines, and on-line resources for dam owners, operators, and professionals.

Exercising

In addition to introductory and refresher training sessions, exercises simulating developing or actual dam failure events are excellent training mechanisms for ensuring readiness and will also provide an indication of the EAP's effectiveness in the event of an emergency. By including all of the Cooperating Entities in exercise activities, the testing program will identify ways in which to improve the EAP and make it more responsive. FEMA's *Guideline for Emergency Action*

Planning for Dam Owners identifies five types of possible exercises that could be included in a training program. These include:

- ❑ **Orientation Seminar** – This is a gathering of all the Cooperating Entities to discuss the EAP in order for the participants to become familiar with their roles, responsibilities, and procedures. The seminar can also serve as a forum to discuss plans for an annual drill or exercise, as well to describe technical matters with participating individuals who do not have a technical background.
- ❑ **Drill** – A drill is the simplest test of an EAP that involves an actual exercise. It tests, develops, or maintains skills in a specific emergency response procedure and is considered a necessary part of ongoing training. A drill should be used to check communications in the plan, verifying names, telephone numbers, and alternate forms of communication. Drills can also be designed for other portions of the plan, such as event evaluation and classification.
- ❑ **Tabletop Exercise** – This is the next level of testing. It would involve a gathering of FDEP representatives and the local emergency officials, and other participants such as the U.S. Forest Service and Putnam County Emergency Management Division, in a meeting room environment. The exercise would include a description of a simulated incident, with the participants discussing their roles in the plan. The format of tabletop exercises is usually informal with minimum stress involved. A review of the results of the discussions could be used to improve the EAP.
- ❑ **Functional Exercise** – This exercise would include the FDEP, the U.S. Forest Service, Putnam County Emergency Management Division, and other local emergency officials that are participants in the EAP. It may also include disaster response agencies like the Red Cross, State and local agencies. Functional Exercises are typically held in a large meeting room, where the participants are located at tables representing their office. Telephone communications may be set up for an exercise involving many participants. The exercise takes place in a stress-induced environment with time constraints, and tests the response to a simulated event. The participants act out their roles, making decisions based upon the communications they receive and direct communications to the other participants in accordance with the emergency plan and their responsibilities. At the completion of the exercise, the plan is discussed and revisions made to the EAP as necessary based on the test findings.
- ❑ **Full Scale Exercise** – This is the most complex level of exercise and would evaluate the operational capability of all aspects of the emergency management system. The Cooperating Entities work interactively in a stressful environment and the full-scale exercise includes the mobilization of personnel and resources to the site in response to a simulated incident. The participants play out their roles in a dynamic environment that provides a high degree of realism and can also include the evacuation of critical residents if previously announced to the public.

The FEMA dam safety guidelines indicate that for most dam operators, the orientation seminar, drill, tabletop exercise, and functional exercise should receive the most emphasis in any given training program. The recommended program for the Kirkpatrick Dam is presented in the next section.

Recommended Training Program

It is recommended that annual refresher training be conducted by FDEP and should include an invitation to key responsible persons from the U.S. Forest Service, Putnam County Emergency Management Division, and other Cooperating Entities. Key personnel should also visit the dam site to become familiar with existing features and conditions. New staff that have EAP responsibilities should be individually trained by the lead responsible person within that Cooperating Entity.

It is recommended that drills be conducted annually as part of the updating of the notification lists within the EAP, as well as to test other aspects of the EAP. Tabletop exercises should be used to train personnel and should be conducted with all the participants after the refresher orientation seminar is completed. Subsequent tabletop exercises should be performed bi-annually as part of the regular training regimen. Functional exercises should be performed every five years in order to subject the plan to a more realistic and comprehensive environment and to maintain a state of preparedness. Full-scale exercises should be considered at the discretion of FDEP, the Putnam County Emergency Management Division, and other local emergency management agencies as an optional emergency exercise, primarily if there is a specific need to evaluate actual field movement and deployment of resources. Functional and full-scale exercises can be coordinated with other scheduled exercises to share emergency management agency resources and to reduce costs.

Record of Training Sessions

Activity	Date	Participants
General Orientation		

EAP Updates

The EAP Coordinator is responsible for ensuring that the EAP is reviewed and updated annually. The annual updates should include changes to key personnel and/or their communication information, information related to land use within the areas that may potentially be affected by large releases of water, and lessons learned from drills, exercises and actual events, if any. In addition to the year-end updating process, the Cooperating Entities should promptly notify the FDEP during the course of the year of changes to the following:

- Emergency Contact Names
- Telephone numbers
- Communication systems

Upon receipt of information related to contacts and information, the FDEP will make necessary changes to the appropriate EAP pages and promptly distribute the revisions to the responsible party of each Cooperating Entity.

During the annual update period, proposed revisions to key components or responsibilities will be distributed to Cooperating Entities for review and comment. Should the annual update process only result in routine changes, e.g., notification contacts, FDEP will distribute affected changes to the Cooperating Entities. Should major modifications be required either on account of the departure of key personnel or decisions made regarding methods and procedures, or both, FDEP may elect to re-issue the entire EAP document.

**LIST OF PROPERTIES IN DAM FAILURE FLOOD BOUNDARY
KIRKPATRICK DAM POSTULATED FAILURE-SUNNYDAY CONDITIONS**

Parcel Identification Number	Owner Name	Site Address	Cross-Section ID Number	Peak Conditions		Initial Floodwave Arrival Time (hrs)
				Floodwave Elevation (ft-NGVD)	Floodwave Arrival Time (hrs)	
281125000000200000	TIITF/STATE OF FLORIDA	3900 COMMONWEALTH BLVD, TALLAHASSEE FL	1625	13.5	10	0.5
331125000000200000	TORODE WILLIAM E III	PO BOX 801, PALATKA FL	1600	13.5	10	0.5
331125000000200010	TORODE PAUL RICHARD	PO BOX 997, STARKE FL	1600	13.5	10	0.5
331125000000210000	ST JOHNS RIVER WATER MANAGEMENT DIS	4049 REID ST, PALATKA FL	1600	13.5	10	0.5
331125000000500000	STANLEY JEANNETTE B	429 WEST PENIEL RD, PALATKA FL	1500	12.8	16	1.5
331125000000500000	WARD JAMES E	PO BOX 1024, STARKE FL	1500	12.8	16	1.5
331125000000500000	REIS REGINALD G	214 PADGETT PL N, LAKELAND FL	1500	12.8	16	1.5
331125000000500000	JOHNSON MARVIN H + KAREN W H/W	116 DEANS CREEK TRAIL, FT MCCOY FL	1500	12.8	16	1.5
331125000000520000	GUNTER WALTER + MARY L	106 MULBERRY ST, SATSUMA FL	1500	12.8	16	1.5
351125000000200000	UNITED STATES OF AMERICA	18TH + 'C' STREET NW, WASHINGTON DC	1500	12.8	16	1.5
05640-000-00	BALDWIN JOHN H ET AL	1416 73RD CIR NE, SAINT PETERSBURG FL	1500	12.8	16	1.5
05642-000-00	MILLER TWILA C &	PO BOX 5437, SALT SPRINGS FL	1500	12.8	16	1.5
05642-001-00	KUMMER ROY FRANCIS & MARTHA &	117 CAROLE RD, PALATKA FL	1500	12.8	16	1.5
05648-000-00	HERNDON AL & KATHERINE	728 NE 12TH AVE,	1500	12.8	16	1.5
321126000000100010	ST JOHNS RIVER WATER MANAGEMENT DIS	4049 REID ST, PALATKA FL	1200	6.9	23	10
041226920000304010	SMITH JOHN R + DOROTHY A	PO BOX 0679, WELAKA FL	1100	4.6	27	13
041226920000304040	PATSOS SAMUEL J + DARLENE M H/W	905 FRONT ST, WELAKA FL	1100	4.6	27	13
331126000000200000	MAXWELL JAMES I + HELEN R	PO BOX 727, WELAKA FL	1100	4.6	27	13
331126000000500000	PATTERSON HOWARD M + MARY H/W	PO BOX 625, WELAKA FL	1100	4.6	27	13
331126000000700000	FITZWATER W J & ONGEL	P O BOX 248, WELAKA FL	1100	4.6	27	13
331126000001000000	DENNISON CAROL B+SCOTT J DENNISON	PO BOX 310, WELAKA FL	1100	4.6	27	13
331126000001040000	DSI FORMS INC	190 COMFORT RD, PALATKA FL	1100	4.6	27	13
331126000001050000	CHAPMAN JODI	805 HARBOR WINDS DR, JACKSONVILLE FL	1100	4.6	27	13
331126000001060000	MOTL WILLIAM F + SARA E H/W	PO BOX 773, WELAKA FL	1100	4.6	27	13
331126000001080000	SCHOONMAKER JAMES C + VERNA M H/W	991 LAKE ASBURY DR, GREEN COVE SPRINGS FL	1100	4.6	27	13
331126000001800000	JOHNSON NEIL F & MARILYN P	PO BOX 1315, WELAKA FL	1100	4.6	27	13
331126000001900000	SANFORD STEVE + ROBIN POE H/W +	8725 SE 19TH AVE RD, OCALA FL	1100	4.6	27	13
331126000002000000	GUZMAN GARY J + JAN R H/W	PO BOX 298, WELAKA FL	1100	4.6	27	13
331126000002100000	SMITH KEVIN W + ELIZABETH I H/W	4768 QUEEN LANE, JACKSONVILLE FL	1100	4.6	27	13
331126000002300000	FERGUSON GEORGE S + JACQUELINE D	PO BOX 669, WELAKA FL	1100	4.6	27	13
331126000002400000	WILLIAMS PRINTING + OFFICE SUPPLY	1033 BRAGG BLVD, FAYETTEVILLE NC	1100	4.6	27	13
331126000002500000	BROWNING CURTIS L + MARGARET B H/W	PO BOX 63, WELAKA FL	1100	4.6	27	13
331126000002600000	BOWLEY LAVERNE F + JANE M H/W	PO BOX 509, WELAKA FL	1100	4.6	27	13
331126000002700000	MASON PHILLIP + DIANA LEE PARTEN	29080 CEDAR DR, BIG PINE KEY FL	1100	4.6	27	13
331126000002800000	SANFORD STEVEN + ROBIN POE H/W	8725 SE 19TH AVE ROAD, OCALA FL	1100	4.6	27	13
331126000002900000	HELMS DON W + SUSAN J H/W	PO BOX 452, WELAKA FL	1100	4.6	27	13
331126000003100000	PATTERSON HOWARD + MARY	PO BOX 625, WELAKA FL	1100	4.6	27	13
331126000003200000	LELAND LOFTON D	PO BOX 567, WELAKA FL	1100	4.6	27	13
331126000003300000	WIGAND HARRY J + JEANNE E H/W	147 FLORIDIAN CLUB RD, SATSUMA FL	1100	4.6	27	13

**LIST OF PROPERTIES IN DAM FAILURE FLOOD BOUNDARY
KIRKPATRICK DAM POSTULATED FAILURE-SUNNYDAY CONDITIONS**

Parcel Identification Number	Owner Name	Site Address	Cross-Section ID Number	Peak Conditions		Initial Floodwave Arrival Time (hrs)
				Floodwave Elevation (ft-NGVD)	Floodwave Arrival Time (hrs)	
331126000003400000	SUTHERLIN LESTER K	PO BOX 261, WELAKA FL	1100	4.6	27	13
331126000003500000	FERGUSON GEORGE S + JACQUELINE D	PO BOX 669, WELAKA FL	1100	4.6	27	13
331126000003700000	VACCARELLO CHUCK + TERRY J H/W	600 KENDRIDGE CT, AURORA IL	1100	4.6	27	13
331126000003800000	CAIN IRENE H LIFE ESTATE	2280 SHEPARD ST UNIT 301, JACKSONVILLE FL	1100	4.6	27	13
331126879000000000	TIBBETTS FRED W + CAROL O H/W	4309 BLUE HERON DR, PONTE VEDRA BEACH FL	1100	4.6	27	13
331126879000000000	LAVEN KENYON S	25 SCOTT STREET, SATSUMA FL	1100	4.6	27	13
331126879000000000	MCPHAIL JOSEPH A + MARIE F H/W	PO BOX 1202, WELAKA FL	1100	4.6	27	13
331126879000000000	WIMBERLY SAM B JR + BRENDA A H/W	7246 PLACID OAKS DR, JACKSONVILLE FL	1100	4.6	27	13
331126879000000000	PECK DONALD J + NANCY L H/W	12672 SHINNECOCK CT, JACKSONVILLE FL	1100	4.6	27	13
331126879000000000	SMITH SUSAN M	3853 MUIRFIELD BLVD E, JACKSONVILLE FL	1100	4.6	27	13
331126879000000000	KING JAMES E JR + LINDA B H/W	13724 PLEASANT VALLEY DR, JACKSONVILLE FL	1100	4.6	27	13
331126879000000060	KUEHN PAUL R LIVING REVOCABLE TRUST	PO BOX 397, WELAKA FL	1100	4.6	27	13
331126879000000080	CONRAD RICHARD E + JANIS C H/W	PO BOX 802, WELAKA FL	1100	4.6	27	13
331126879000000000	ARNOLD RICHARD M + LESLY H	PO BOX 147, WELAKA FL	1100	4.6	27	13
331126879000000000	RICKETTS MILTON R + CONNIE R H/W	2468 SAN SAGO LN, JACKSONVILLE FL	1100	4.6	27	13
331126879000000070	PLEVIK FREDERICK W + LINDA H/W	47 MAPLE DR N, LINDENHURST NY	1100	4.6	27	13
331126879000000090	CONRAD RICHARD E + JANIS C H/W	PO BOX 802, WELAKA FL	1100	4.6	27	13
331126879100000000	KELLY M G TRUST	843 N WOODLAND BLVD, DELAND FL	1100	4.6	27	13
331126879100000000	TAYLOR THOMAS S + LILA JEAN	PO BOX 716, WELAKA FL	1100	4.6	27	13
331126879100000000	HARGROVE MICHAEL J + SANDRA F H/W	PO BOX 824, WELAKA FL	1100	4.6	27	13
331126879100000000	PANTALONE ANDREA L + DAVID A H/W	321 HOLLOWAYS DR, JACKSONVILLE FL	1100	4.6	27	13
331126879100000000	RALPH RICHARD R + JOAN E H/W	PO BOX 718, WELAKA FL	1100	4.6	27	13
331126879100000000	JAMES KENDALL Y + WILLENE S	1548 BLYTHE IS DR, BRUNSWICK GA	1100	4.6	27	13
331126879100000000	ANDERSON THOMAS J+ALICE B ANDERSON	PO BOX 547, WELAKA FL	1100	4.6	27	13
331126879100000000	SHAFFER HAROLD R + LINDA D H/W	1964 OAK TWIST CT, ORANGE PARK FL	1100	4.6	27	13
331126879100000000	SINES DAVID N + DELLA A H/W	1075 LONG ISLAND DR, MONETA VA	1100	4.6	27	13
331126879100000000	WEY MARGIE CLYDE+TONYA W LANKFORD	5 RONNIEL CIR, HOLLY HILL FL	1100	4.6	27	13
331126879100000000	RUSSELL KERRY P + LEAH M H/W	1915 N SHERRY RD, ATLANTIC BEACH FL	1100	4.6	27	13
331126879100000000	ALL VEGETATION SERVICES INC	10680 CROOKED TREET CT, JACKSONVILLE FL	1100	4.6	27	13
331126879100000000	COLLINS DALE L + JULIA H H/W	4859 BLUFF RD, MULLINS SC	1100	4.6	27	13
331126879100000000	ROGERS EDGAR C + LAWANNA D H/W	PO BOX 1351, WELAKA FL	1100	4.6	27	13
331126879100000000	SPEELER DOUGLAS R + W RENEE H/W AND	6964 SOUTH SHORE DR S, SOUTH PASADENA FL	1100	4.6	27	13
331126879100000000	ALLEN W BRUCE + VICTORIA L H/W	10877 SKYLARK ESTATES LN, JACKSONVILLE FL	1100	4.6	27	13
331126879100000000	COLEMAN KNOX F + SHIRLEY D H/W	1044 SOUTHERLAND RD, CHURCH ROAD VA	1100	4.6	27	13
331126879100000000	SPOONER SHIRLEY ANN	79 CAREFREE DRIVE, SATSUMA FL	1100	4.6	27	13
331126879100000000	TIBBS THOMAS R + DEBORAH A H/W	4209 NW 39TH WAY, GAINESVILLE FL	1100	4.6	27	13
331126879100000000	DAVIS JOSEPH R + GREGORY W DAVIS	PO BOX 134, WELAKA FL	1100	4.6	27	13
331126879100000000	WARD FRANCES M	PO BOX 623, WELAKA FL	1100	4.6	27	13
331126879100000000	WILDER HENRY N	PO BOX 1168, WELAKA FL	1100	4.6	27	13
331126879100000000	MAHAN JAMES J + PHYLLIS V (H/W)	PO BOX 801, WELAKA FL	1100	4.6	27	13

**LIST OF PROPERTIES IN DAM FAILURE FLOOD BOUNDARY
KIRKPATRICK DAM POSTULATED FAILURE-SUNNYDAY CONDITIONS**

Parcel Identification Number	Owner Name	Site Address	Cross-Section ID Number	Peak Conditions		Initial Floodwave Arrival Time (hrs)
				Floodwave Elevation (ft-NGVD)	Floodwave Arrival Time (hrs)	
331126879100000000	ARNOLD CHRISTINA L	10549 BURRIS DRIVE, JACKSONVILLE FL	1100	4.6	27	13
331126879100000000	SMITH WILLIAM D II + MARY A H/W	1708 SOUTHCREEK DR, JACKSONVILLE FL	1100	4.6	27	13
331126879100000000	CHRISTOPHER REVOCABLE LIVING TRUST	PO BOX 783, WELAKA FL	1100	4.6	27	13
331126879100000000	BORNANDER PAUL O & MYRTLE E	PO BOX 1073, WELAKA FL	1100	4.6	27	13
331126879100000000	RICKETTS MILTON R + CONNIE R H/W	2468 SAN SAGO LN, JACKSONVILLE FL	1100	4.6	27	13
331126879100000000	NEVILLE WILLIAM DONALD REV TRUST	4580 NE 2ND STREET, OCALA FL	1100	4.6	27	13
331126879100000000	MUSE JOE R JR + DARLENE B H/W	273 SPORTSMAN DR, SATSUMA FL	1100	4.6	27	13
331126879100000000	RUSSELL KERRY P + LEAH M H/W	1915 N SHERRY RD, ATLANTIC BEACH FL	1100	4.6	27	13
331126879100000000	GANAS LOUIS C + BONNIE R H/W	RT 1 BOX 1000, NAYLOR GA	1100	4.6	27	13
331126879100000000	SPEELER DOUGLAS R + W RENEE H/W +	6964 SOUTH SHORE DR S, SOUTH PASADENA FL	1100	4.6	27	13
331126879100000000	FAULKNER RICHARD R + KAY H H/W	9080 OLD WIRE PLACE, BRYCEVILLE FL	1100	4.6	27	13
331126879100000000	MAUPIN LIVING TRUST	1111 WINTER SPRINGS BLVD, WINTER SPRINGS FL	1100	4.6	27	13
331126879100000000	JOHNSON CONRAD A JR + KATHLEEN D	PO BOX 313, WELAKA FL	1100	4.6	27	13
331126879100000000	BOYD PAUL D + VICKY L BERRY H/W	3715 S 1ST ST, JACKSONVILLE BEACH FL	1100	4.6	27	13
331126879100001000	CLARK WILLIAM C JR REV LIVING TRUST	PO BOX 1244, WELAKA FL	1100	4.6	27	13
331126879100001000	PEEPLES OWEN C + JILL S H/W	4040 LONICERA LOOP, JACKSONVILLE FL	1100	4.6	27	13
331126879100001000	WEBBER GARY G + LINDA J H/W	1149 N HAMMOCK RD, JACKSONVILLE FL	1100	4.6	27	13
331126879100001000	HAAG JOHN R + LUCILE M	PO BOX 398, WELAKA FL	1100	4.6	27	13
331126879100001000	MILLER DUANE C & JUDY E	PO BOX 271, WELAKA FL	1100	4.6	27	13
331126879100001000	FILONI DON M	PO BOX 812, WELAKA FL	1100	4.6	27	13
331126879100001000	LAIN SANDRA L	PO BOX 557, WELAKA FL	1100	4.6	27	13
331126879100001000	LAIN SANDRA L	PO BOX 557, WELAKA FL	1100	4.6	27	13
331126879100001000	JONES GREGORY B + CORRIE A H/W	48 BLACK BEAR LN, PALM COAST FL	1100	4.6	27	13
331126879100001000	LEWIS FRANCIS T + PEGGY A H/W	129 OAK AVE, LAKE CITY FL	1100	4.6	27	13
331126879100001000	SCHWAB RANDALL E + JANINE W H/W	130 PARADISE DR, SATSUMA FL	1100	4.6	27	13
331126879100001000	CHILES CHARLES J	PO BOX 326, WELAKA FL	1100	4.6	27	13
331126879100001000	ELLINOR FRED B + MARTHA A H/W	PO BOX 627, WELAKA FL	1100	4.6	27	13
331126879100001000	KOCH FRANCES C REVOCABLE TRUST	3037 LARKSPUR ST, TITUSVILLE FL	1100	4.6	27	13
331126879100001000	SABUCCO JOHN R + DIANE C H/W	PO BOX 309, WELAKA FL	1100	4.6	27	13
331126879100001000	MAYERNIK JOAN W+RAYMOND GRABOWSKI	736 NW 12TH AVE, DANIA FL	1100	4.6	27	13
331126879100001000	REID RAYMOND D + MARTHA T	PO BOX 489, WELAKA FL	1100	4.6	27	13
331126879100001000	KLINGER WESLEY V + SANDRA K H/W	14511 LUTH DR N, JACKSONVILLE FL	1100	4.6	27	13
331126879100001000	MCDANIEL ROY BRUCE + SUSAN P H/W	4528 PAGEANT WAY, ORLANDO FL	1100	4.6	27	13
331126879100001000	WHITE DURWARD W + MARIA M H/W	1213 HIDDEN LAKES DR, MT PLEASANT SC	1100	4.6	27	13
331126879100001000	VERSTRAETE ALBERTINE LIFE ESTATE	PO BOX 564, WELAKA FL	1100	4.6	27	13
331126879100001000	MORRISON RICHARD L + JUDITH C H/W	PO BOX 528, LAKE COMO FL	1100	4.6	27	13
331126879100001000	MAUPIN JAMES W	1930 MATAPEAKE CT, SAINT LEONARD MD	1100	4.6	27	13
331126879100001000	REICH WAYNE G + SALLY A H/W	PO BOX 883, WELAKA FL	1100	4.6	27	13
331126879100001000	BEASLEY EDDIE L + SARA E	P O BOX 712, WELAKA FL	1100	4.6	27	13
331126879100001000	WARD HINTON + MARY J H/W	154 MOONLITE DRIVE, SATSUMA FL	1100	4.6	27	13

**LIST OF PROPERTIES IN DAM FAILURE FLOOD BOUNDARY
KIRKPATRICK DAM POSTULATED FAILURE-SUNNYDAY CONDITIONS**

Parcel Identification Number	Owner Name	Site Address	Cross-Section ID Number	Peak Conditions		Initial Floodwave Arrival Time (hrs)
				Floodwave Elevation (ft-NGVD)	Floodwave Arrival Time (hrs)	
331126879100001000	POWERS HAZEL W+JACQUELINE GENTRY	PO BOX 894, WELAKA FL	1100	4.6	27	13
331126879100001000	ACKLAND MARVIN J + KAY L H/W	PO BOX 576, WELAKA FL	1100	4.6	27	13
331126879100001000	ACKLAND MARVIN J + KAY L H/W	PO BOX 576, WELAKA FL	1100	4.6	27	13
331126879100001000	M + R CARLSON FAMILY TRUST	1695 E 700 S, OXFORD IN	1100	4.6	27	13
331126879100001000	PITTMAN LANDER WILSON + MARGARET	PO BOX 328, WELAKA FL	1100	4.6	27	13
331126879100001000	ROBERTS TERRY	162 MOONLITE DR, SATSUMA FL	1100	4.6	27	13
331126879100001000	WOLFGANG NORMA K REV LIVING TRUST	PO BOX 466, WELAKA FL	1100	4.6	27	13
331126879100001000	TYJEWski ELAINE BICK REVOCABLE TRST	3390 CHEYENNE LANE, JACKSONVILLE FL	1100	4.6	27	13
331126879100001000	SORENSEN DAVID D REVOCABLE TRUST	1312 SHANGRI-LA DR, DAYTONA BEACH FL	1100	4.6	27	13
331126879100001000	COOK ROMA J	PO BOX 483, WELAKA FL	1100	4.6	27	13
331126879100001000	RANDALL-GREGROW DIANA L + DENNIS R	PO BOX 996, WELAKA FL	1100	4.6	27	13
331126879100001000	D R S PARTNERSHIP	205 COACHMAN DR, AIKEN SC	1100	4.6	27	13
331126879100001000	TYLER CHARLES G	PO BOX 775, WELAKA FL	1100	4.6	27	13
331126879100001000	RUSSELL RAYMOND W + BENETTA D H/W	174 MOONLITE DR, SATSUMA FL	1100	4.6	27	13
331126879100001000	MARLIN RALPH	175 MOONLITE DRIVE, SATSUMA FL	1100	4.6	27	13
331126879100001000	ROCK ROBERT O + IDA R H/W	176 MOONLITE DR, SATSUMA FL	1100	4.6	27	13
331126879100001000	LUCAS HAROLD V JR	309 JEFFERSON ST, DAYTONA BEACH FL	1100	4.6	27	13
331126879100001000	LUCAS HAROLD V JR	309 JEFFERSON ST, DAYTONA BEACH FL	1100	4.6	27	13
331126879100001000	BEECHER JOHN B III + R BRONWYN H/W	101 SURFSIDE AVE, ST AUGUSTINE FL	1100	4.6	27	13
331126879100001000	WOOLF ROY LYNN + ANN F COOK H/W	PO BOX 1137, WELAKA FL	1100	4.6	27	13
331126879100001000	WONORSKI EDWARD J & JANET K	PO BOX 356, WELAKA FL	1100	4.6	27	13
331126879100001000	AMMONS TOMI E + BOBBY R H/W	11 HOCKEY DR, WELAKA FL	1100	4.6	27	13
331126879100001000	SPORTSMANS HARBOR COMMUNITY CLUB	P.O. BOX 789, WELAKA FL	1100	4.6	27	13
331126879100001000	STEENERSON RICHARD A+CHERYLL A H/W	6 MOULTRIE CREEK CIR, ST AUGUSTINE FL	1100	4.6	27	13
331126879100001000	BROWN FRANCIS J + LYNETTE	PO BOX 1207, WELAKA FL	1100	4.6	27	13
331126879100001000	HARDEN JOHN FRANKLIN+CATHY T H/W	PO BOX 1174, WELAKA FL	1100	4.6	27	13
331126879100001000	NORMAND VICTOR H + SANDRA K H/W	PO BOX 920, WELAKA FL	1100	4.6	27	13
331126879100001000	KIRKPATRICK HAROLD C + LUCILE A	PO BOX 786, WELAKA FL	1100	4.6	27	13
331126879100001000	HOUCK RANDALL J + DOROTHY S H/W	705 STANDISH DR, ST AUGUSTINE FL	1100	4.6	27	13
331126879100001000	WEEKS JESSE L + JOYCE C H/W	1905 W GOLDEN RD, TIFTON GA	1100	4.6	27	13
331126879100001000	OPISSO JOHN +ELAINE R+JOSEPHINE R	PO BOX 220187, GLENWOOD FL	1100	4.6	27	13
331126879100001000	GRANT SAMUEL E + CAROLYN P H/W	7327 WHITE BIRCH DR, JACKSONVILLE FL	1100	4.6	27	13
331126879100001000	SEFCIK WILLIAM F + BARBARA L H/W	RT 4 BOX 2484, LAKE BUTLER FL	1100	4.6	27	13
331126879100001000	DUKE JAMES H + ANNETTE W	2083 GINTOWN RD, SYLVESTER GA	1100	4.6	27	13
331126879100001000	WALTERS JAMES RALPH + JEAN CAROLYN	79 MORNINGSIDE DRIVE, ALBANY GA	1100	4.6	27	13
331126879100001000	SCHNOOR BARRY D + VICKI L H/W	PO BOX 1263, WELAKA FL	1100	4.6	27	13
331126879100001000	KILCHRISS DAVID S + DORIS B	696 CANNAFAX RD, BARNESVILLE GA	1100	4.6	27	13
331126879100001000	BARNETT DONALD J	8237 SEVEN OAKS DR, JONESBORO GA	1100	4.6	27	13
331126879100001000	BOBER THOMAS P + PATSY A H/W	PO BOX 1175, WELAKA FL	1100	4.6	27	13
331126879100001000	DEAN WESLEY H+JOYCE H REVOC TRUST	6186 WINDOVER WAY, TITUSVILLE FL	1100	4.6	27	13

**LIST OF PROPERTIES IN DAM FAILURE FLOOD BOUNDARY
KIRKPATRICK DAM POSTULATED FAILURE-SUNNYDAY CONDITIONS**

Parcel Identification Number	Owner Name	Site Address	Cross-Section ID Number	Peak Conditions		Initial Floodwave Arrival Time (hrs)
				Floodwave Elevation (ft-NGVD)	Floodwave Arrival Time (hrs)	
331126879100001000	LUDEMAN ROBERT E + DONNA A H/W	4401 WINDSOR CT, MIMS FL	1100	4.6	27	13
331126879100001000	ELLINOR FREDERICK B + MARTHA A H/W	PO BOX 627, WELAKA FL	1100	4.6	27	13
331126879100001000	PATRICK DEBRA G + STEVEN E H/W	141 PARADISE DR, SATSUMA FL	1100	4.6	27	13
331126879100001000	VERSTRAETE GERARD A + NICOLE + GINA	PO BOX 564, WELAKA FL	1100	4.6	27	13
331126879100001000	VERSTRAETE HENRY + EMILIE + KATIE	PO BOX 564, WELAKA FL	1100	4.6	27	13
331126879100001000	ABERCROMBIE J E + PATSY L	2021 CHALLEUX DR W, JACKSONVILLE FL	1100	4.6	27	13
331126879100001000	HAAG JOHN R + LUCILE M	PO BOX 398, WELAKA FL	1100	4.6	27	13
331126879100001000	CROSBY JAMES A + DONNIE GOODSON	C/O 1051 OLD GAINESVILLE HWY, INTERLACHEN FL	1100	4.6	27	13
331126879100001000	WILLIAMS RALPH E + ELLEN H H/W	PO BOX 805, WELAKA FL	1100	4.6	27	13
331126879100001000	BURKHART WAYNE	1225 HIDDEN OAKS PL, JACKSONVILLE FL	1100	4.6	27	13
331126879100001000	JOHNS EDWARD D + DONNA L H/W	PO BOX 737, WELAKA FL	1100	4.6	27	13
331126879100002000	DECENT ALLEN K + LEE H/W	13 CLOVERDALE CT N, PALM COAST FL	1100	4.6	27	13
331126879100002000	CLERC GEORGE EDWARD JR + IRIS D H/W	PO BOX 724, WELAKA FL	1100	4.6	27	13
331126879100002000	HOUSE MARION E + VIRGINIA H/W	PO BOX 184, WELAKA FL	1100	4.6	27	13
331126879100002000	TIDWELL KATHY	PO BOX 752, WELAKA FL	1100	4.6	27	13
331126879100002000	CHIDO RUSSEL L	7 CUNNINGHAM DR, NEW SMYRNA BEACH FL	1100	4.6	27	13
331126879100002000	LYNCH THOMAS F + STEPHENI T H/W	1372 WHITE STAR LN, TALLAHASSEE FL	1100	4.6	27	13
331126879100002000	HASKELL JAMES C + BARBARA J H/W	216 SPORTSMAN DR, SATSUMA FL	1100	4.6	27	13
331126879100002000	LONG DONALD R + DELORES A H/W	610 ROCK RIDGE BLVD, APOPKA FL	1100	4.6	27	13
331126879100002000	CROOMS GENEVA+ALMA A DIXON TRUSTEES	113 CROOMS RD, BRUNSWICK GA	1100	4.6	27	13
331126879100002000	FEAGLE JAMES E	PO BOX 1260, WELAKA FL	1100	4.6	27	13
331126879100002000	FULLER WANDA L	PO BOX 22, WELAKA FL	1100	4.6	27	13
331126879100002000	DAUGHERTY MARTHA R	PO BOX 39, WELAKA FL	1100	4.6	27	13
331126879100002000	RUNNERSTROM THERESA M	PO BOX 25, WELAKA FL	1100	4.6	27	13
331126879100002000	HOLTON ROBERT	PO BOX 1344, WELAKA FL	1100	4.6	27	13
331126879100002000	HILL DENA L	PO BOX 231, WELAKA FL	1100	4.6	27	13
331126879100002000	BRIM WILLIAM F + KATHLEEN H H/W	1006 CACTUS CUT RD, MIDDLEBURG FL	1100	4.6	27	13
331126879100002000	DAVIDSON RALPH L & IRMA G	P O BOX 57, WELAKA FL	1100	4.6	27	13
331126879100002000	LEWIS LAURENCE E + VIVIAN W	3715 WAYLAND ST, JACKSONVILLE FL	1100	4.6	27	13
401226000000100000	REILLY JAMES T + CAROLYN	PO BOX 118, WELAKA FL	1100	4.6	27	13
401226000000200000	MELCHER WILLIAM OTTO+PATRICIA LEE	PO BOX 1140, WELAKA FL	1100	4.6	27	13
401226000000300000	WYNN JAMES L + ZARKA A H/W	PO BOX 1325, WELAKA FL	1100	4.6	27	13
401226000000600000	DE CHAINE PRISCILLA A	P O BOX 568, WELAKA FL	1100	4.6	27	13
401226000000700000	SHANE RONALD C + GEORGIA L H/W	PO BOX 1205, WELAKA FL	1100	4.6	27	13
401226000000800000	AKINS HILDA P + JUNE PENDLEY	PO BOX 484, WELAKA FL	1100	4.6	27	13
401226000001000000	JONES EMELINE HEIRS OF	PO BOX 776, WELAKA FL	1100	4.6	27	13
401226000001100000	TANGENT INVESTMENT INC	PO BOX 1139, WELAKA FL	1100	4.6	27	13
401226000001200000	PRINCETON ST+ST JOHNS RIVER LAND TR	PO BOX 1330, WELAKA FL	1100	4.6	27	13
401226000001500000	KISH ROGER T	PO BOX 622, WELAKA FL	1100	4.6	27	13
401226000001700000	COLONIAL INVESTMENT CORP	523 S ELLIS RD, JACKSONVILLE FL	1100	4.6	27	13

**LIST OF PROPERTIES IN DAM FAILURE FLOOD BOUNDARY
KIRKPATRICK DAM POSTULATED FAILURE-SUNNYDAY CONDITIONS**

Parcel Identification Number	Owner Name	Site Address	Cross-Section ID Number	Peak Conditions		Initial Floodwave Arrival Time (hrs)
				Floodwave Elevation (ft-NGVD)	Floodwave Arrival Time (hrs)	
401226000001800030	DOWDA CLYDE M	4653 HIGHWAY 5, WINSTON GA	1100	4.6	27	13
401226000001900030	BOGGS DAVID A + ELIZABETH M	PO BOX 157, LAKE COMO FL	1100	4.6	27	13
401226000002000010	COBB PHILIP J + SHARON E H/W	PO BOX 960, WELAKA FL	1100	4.6	27	13
401226000002300011	ALLEN PETER + LAURA	PO BOX 1159, WELAKA FL	1100	4.6	27	13
401226000002300010	MARCHIONE ANTHONY R + NANCY C H/W	PO BOX 798, WELAKA FL	1100	4.6	27	13
401226000002700000	CHAMBERS JAY N + LINDA R H/W	PO BOX 1211, WELAKA FL	1100	4.6	27	13
401226000002900000	ESSER DOROTHY L	445 S ATLANTIC AVE, ORMOND BEACH FL	1100	4.6	27	13
401226000003100000	HILTON LUTHER T JR & MARY F	P O BOX 187, WELAKA FL	1100	4.6	27	13
401226000003500000	BENNETT MARY L	PO BOX 606, PALATKA FL	1100	4.6	27	13
401226000003900000	LANAHAN JAMES M + MARIAN D H/W	1739 BELMONTE AVE, JACKSONVILLE FL	1100	4.6	27	13
401226053000000000	SCHUCK MARVA J	PO BOX 889, WELAKA FL	1100	4.6	27	13
401226053000000000	RADER RANDOLPH DEAN + GAY S H/W	2371 PENNSYLVANIA AVE, OVIEDO FL	1100	4.6	27	13
401226053000000010	KRUPKA HAROLD R + CARMEN L H/W	PO BOX 717, WELAKA FL	1100	4.6	27	13
401226053000000030	KRUPKA HAROLD R + CARMEN L H/W	PO BOX 717, WELAKA FL	1100	4.6	27	13
401226053000000040	LLOYD WILLIAM S TRUST	PO BOX 2120, DAYTONA BEACH FL	1100	4.6	27	13
401226053000000060	MINTON JAMES G + KATHRYN S H/W	PO BOX 429, WELAKA FL	1100	4.6	27	13
401226053000000090	ZELLERS CARL FREDERICK JR LIVING TR	PO BOX 1359, WELAKA FL	1100	4.6	27	13
401226053000000100	COHEN HAROLD F + KATHLEEN W	PO BOX 1152, WELAKA FL	1100	4.6	27	13
401226053000000110	GREIMEL ROBERT A + MARGIT F H/W	PO BOX 300, WELAKA FL	1100	4.6	27	13
401226053000000120	ANDERSON ROBERT A SR + SONYA P H/W	PO BOX 1379, WELAKA FL	1100	4.6	27	13
401226053000000200	HROSIK EUGENE E + PATRICIA E H/W	PO BOX 911, WELAKA FL	1100	4.6	27	13
401226053000000000	HUNTER ROBERT D + CARRIE L H/W	8225 HALL LN, ST AUGUSTINE FL	1100	4.6	27	13
401226053000000000	HUNTER ROBERT D + CARRIE L H/W	8225 HALL LN, ST AUGUSTINE FL	1100	4.6	27	13
401226053000000130	BOWEN EARL + NORMA E H/W	7248 PRINCETON RD, MIDDLETOWN OH	1100	4.6	27	13
401226053000000140	BOWEN NORMA	7248 PRINCETON RD, MIDDLETOWN OH	1100	4.6	27	13
401226053000000160	LAWRENCE CHARLES + RETA H/W	3801 CROWN POINT RD NO 3092, JACKSONVILLE FL	1100	4.6	27	13
401226053000000380	MINTON JAMES G + KATHRYN S H/W	PO BOX 429, WELAKA FL	1100	4.6	27	13
401226053000000390	LLOYD WILLIAM S TRUST	PO BOX 2120, DAYTONA BEACH FL	1100	4.6	27	13
401226053000101000	FRANKLIN REUBEN C + ROSEMARY H/W	4609 LEGANDS LANE, ELKTON FL	1100	4.6	27	13
401226053000101000	GREGG JOHN L	123 SW JEFFERSON AVE SUITE 111, PEORIA IL	1100	4.6	27	13
401226053000101000	EMERY MARTHA L LIVING TRUST	5388 NOBLE CIR S, JACKSONVILLE FL	1100	4.6	27	13
401226053000101000	HILL DAVID LEE + PAULA S JARRETT	476 S MEADOW SONG CT, NEW PALESTINE IN	1100	4.6	27	13
401226053000101000	HULL JOEL M + NANCY S H/W	113 LATESHA TERR, PALATKA FL	1100	4.6	27	13
401226053000101000	HOLLAND CHARLES RONALD SR	PO BOX 1012, WELAKA FL	1100	4.6	27	13
401226053000101000	NELSON JACK R + PAULINE H/W	192 ST CLAIR DR, ST SIMONS ISLAND GA	1100	4.6	27	13
401226053000101000	LEWIS ALBERT Z + ELIZABETH E H/W	PO BOX 983, WELAKA FL	1100	4.6	27	13
401226053000101000	HICE HOWARD ROBERT JR +	1812 OLD FLEMING GROVE RD, GREEN COVE SPRINGS FL	1100	4.6	27	13
401226053000101000	BRINSON LONNIE M + GUINDAL ELAINE	246 GOODTOWN DR, BRUNSWICK GA	1100	4.6	27	13
401226053000101000	HALL HOWARD W + JIMMIE M H/W	PO BOX 219, WELAKA FL	1100	4.6	27	13
401226053000101000	BRAZIL DONALD K	PO BOX 653, WELAKA FL	1100	4.6	27	13

**LIST OF PROPERTIES IN DAM FAILURE FLOOD BOUNDARY
KIRKPATRICK DAM POSTULATED FAILURE-SUNNYDAY CONDITIONS**

Parcel Identification Number	Owner Name	Site Address	Cross-Section ID Number	Peak Conditions		Initial Floodwave Arrival Time (hrs)
				Floodwave Elevation (ft-NGVD)	Floodwave Arrival Time (hrs)	
401226053000101000	NEWTON WARREN RAY REVOCABLE TRUST	1815 WOODMERE DR, JACKSONVILLE FL	1100	4.6	27	13
401226053000101150	MADARA PAUL A + SUSAN C H/W	6195 SOUTH 800 WEST, PENDELTON IN	1100	4.6	27	13
401226053000101090	VANDENBOOM L L C	2510 PINEVIEW DR NE, GRAND RAPIDS MI	1100	4.6	27	13
401226053000101100	ZELLERS CARL FREDERICK JR LVG TRUST	PO BOX 1359, WELAKA FL	1100	4.6	27	13
401226053000102000	STEINER JANET O	3039 S PONTE VEDRA BLVD, PONTE VEDRA FL	1100	4.6	27	13
401226053000102000	COX VERIA VANONA REVOCABLE TRUST	3849 LAVISTA CIR, JACKSONVILLE FL	1100	4.6	27	13
401226053000102000	BEHRE HENRY J + JOYCE W	1512 LONG HILL RD, MILLINGTON NJ	1100	4.6	27	13
401226053000102000	PAYLOR LARRY E + JO ANN	PO BOX 642, WELAKA FL	1100	4.6	27	13
401226053000102000	SEARCY HERBERT C + JANET S H/W	1382 BLACKHAWK TRAIL EAST, JACKSONVILLE FL	1100	4.6	27	13
401226053000102090	AUSTIN WILLIAM E	PO BOX 188, WELAKA FL	1100	4.6	27	13
401226053000102000	JOHNSON LESTER L JR+VIRGINIA E H/W	1985 STATE RD #13, JACKSONVILLE FL	1100	4.6	27	13
401226053000102000	GROOMS RUSSELL E JR + CATHERINE M	5104 PEBBLE ISLE DR, JACKSONVILLE FL	1100	4.6	27	13
401226053000102000	HUGHES CHARLES E + MARGARET GAIL	361770 PINE ST, HILLIARD FL	1100	4.6	27	13
401226053000102000	MURPHY GARY L + DONNA H/W	2021 CEDARBERRY RD, NORTH PLATTE NE	1100	4.6	27	13
401226053000102000	HUGHES CLYDE E JR + JOANN S H/W	PO BOX 1076, WELAKA FL	1100	4.6	27	13
401226053000102000	CLENDENIN LARRY V + SARAH M H/W	4501 N WHEELING AVE #11-B2, MUNCIE IN	1100	4.6	27	13
401226053000102000	CLOUGHLEY RICHARD A & JANET G	PO BOX 766, WELAKA FL	1100	4.6	27	13
401226053000102000	STOUT JOHN E + CAROLE G H/W	1224 CUNNINGHAM CR RD, JACKSONVILLE FL	1100	4.6	27	13
401226053000102150	WELLS LIVING TRUST	628 WEST MOSS WOOD TRACE, PONTE VEDRA BEACH FL	1100	4.6	27	13
401226053000102100	EHLERS DENNIS H + CAROLYN F H/W	124 E 35TH ST, ANDERSON IN	1100	4.6	27	13
401226053000201350	LYERLY JAMES G JR + JEAN B H/W	4275 BALTIC ST, JACKSONVILLE FL	1100	4.6	27	13
401226053000201000	COX GARY WAYNE + BEVERLY O H/W	11639 LOIS CROSS DR, JACKSONVILLE FL	1100	4.6	27	13
401226053000201000	RIDDERING LOUISE	PO BOX 826, WELAKA FL	1100	4.6	27	13
401226053000201000	FERBER GEORGE A + JO ANN H/W	4058 S FLETCHER AVE, FERNANDINA BEACH FL	1100	4.6	27	13
401226053000201000	VAUGHN JERRY A + CHERYL K H/W	510 SIXTEENTH ST, ST AUGUSTINE FL	1100	4.6	27	13
401226053000201050	JARRETT JACKIE E + MARILYN S H/W	PO BOX 831, WELAKA FL	1100	4.6	27	13
401226053000201330	BALDWIN CHARLES J LIVING TRUST	PO BOX 810490, DALLAS TX	1100	4.6	27	13
401226053000201070	GODBOLD JAKE M + JEAN J H/W	14667 CAPSTAN DRIVE, JACKSONVILLE FL	1100	4.6	27	13
401226053000201110	HOLLAND CHARLES R	PO BOX 1012, WELAKA FL	1100	4.6	27	13
401226053000201130	SPENCER ROBERT W + FRANCES E H/W	80 WOODROW DR, STAFFORD VA	1100	4.6	27	13
401226053000302000	POPP ROBERT J + JAN B H/W	PO BOX 762, PITTSBORO NC	1100	4.6	27	13
401226053000302000	SEATLANTIC INC	4414 SEABREEZE DR, JACKSONVILLE BEACH FL	1100	4.6	27	13
401226053000302130	HUNTER WILLIAM D+OWEN WOODROW W	SUITE 350 123 S CALHOUN ST, TALLAHASSEE FL	1100	4.6	27	13
401226053000302000	NELSON PAULINE B	192 ST CLAIR DR, ST SIMONS ISLAND GA	1100	4.6	27	13
401226053000302000	GILFUS THOMAS H + JONI T H/W	179 BEECHERS POINT DR UNIT C220, WELAKA FL	1100	4.6	27	13
401226053000302000	MADDOX SIBLEY B REV LIVING TRUST	1321 MORGANA RD, JACKSONVILLE FL	1100	4.6	27	13
401226053000302000	SMITH THOMAS A + LOUISE B H/W	PO BOX 574, SAN MATEO FL	1100	4.6	27	13
401226053000302000	BUENTE DALE L & PHYLLIS	10621 ORCHARD LN, EVANSVILLE IN	1100	4.6	27	13
401226053000302000	HORTON GIFFORD S + LOIS M H/W ETAL	PO BOX 1062, WELAKA FL	1100	4.6	27	13
401226053000302000	BURNETT RICHARD J JR	1443 BLACKHAWK TR EAST, JACKSONVILLE FL	1100	4.6	27	13

**LIST OF PROPERTIES IN DAM FAILURE FLOOD BOUNDARY
KIRKPATRICK DAM POSTULATED FAILURE-SUNNYDAY CONDITIONS**

Parcel Identification Number	Owner Name	Site Address	Cross-Section ID Number	Peak Conditions		Initial Floodwave Arrival Time (hrs)
				Floodwave Elevation (ft-NGVD)	Floodwave Arrival Time (hrs)	
401226053000302000	BUSH JAMES F + ALICIA M H/W +	1604 S PALM AVE, PALATKA FL	1100	4.6	27	13
401226053000302000	HELMS JAMES A + MARJORIE K H/W	3737 POINT PLEASANT RD, JACKSONVILLE FL	1100	4.6	27	13
401226053000302000	ROGALSKY LEILA A	19 MONROE PL, ROCKAWAY NJ	1100	4.6	27	13
401226053000302050	BATEMAN JOSEPH B + ANN P H/W	2324 VILLANOVA CIR, JACKSONVILLE FL	1100	4.6	27	13
401226053000302060	RECHTIN CHRISTOPHER + JULIE H/W	PO BOX 1321, WELAKA FL	1100	4.6	27	13
401226053000302070	R B CONDOMINIUM ASSOC INC	PO BOX 190, WELAKA FL	1100	4.6	27	13
401226053000302080	DAILEY SAM H + KRYSTEL T H/W	14636 CRYSTAL VIEW LN, JACKSONVILLE FL	1100	4.6	27	13
401226053000302110	COX JAMES S + TAMMY S H/W	1480 TAMA RAN PL, JACKSONVILLE FL	1100	4.6	27	13
401226053000302120	WATSON CORP OF JACKSONVILLE	7821 DEERCREEK CLUB RD SUITE 200, JACKSONVILLE FL	1100	4.6	27	13
401226053000302140	HOLLAND CHARLES O + WILMA J	PO BOX 1227, WELAKA FL	1100	4.6	27	13
401226511703200000	UPTON R E JR LIVING TRUST	30 REDICK LN, ST AUGUSTINE FL	1100	4.6	27	13
401226511703200250	POLITI SEBASTIAN L + JEANNINE F H/W	PO BOX 352361, PALM COAST FL	1100	4.6	27	13
401226511703200210	DIXON R EARL + LOUISE W	8452 MIZNER CIR E, JACKSONVILLE FL	1100	4.6	27	13
401226511703200220	RICHARDSON CAROLYN D REVOCABLE TRST	PO DRAWER F, JACKSONVILLE FL	1100	4.6	27	13
411226879000000180	DAY ELLEN J + PETER G BEALS	PO BOX 355, MANCHESTER ME	1100	4.6	27	13
411226879100002000	RAGLAND HARRY J + JOYCE A TRUSTEES	PO BOX 918, WELAKA FL	1100	4.6	27	13
411226879100002500	CONDORA INC	PO BOX 625, DELAND FL	1100	4.6	27	13
411226898600000000	SPORTSMANS LODGE DEV ASSOCIATES INC	99 ORANGE ST, ST AUGUSTINE FL	1100	4.6	27	13
411226920000301040	EVANS GRACE T LIFE ESTATE	P O BOX 255, WELAKA FL	1100	4.6	27	13
411226920005900010	SANDS NATHAN JOEL	14726 SE 1ST AVE RD, SUMMERFIELD FL	1100	4.6	27	13
411226920007800122	ROCCO PETER P JR + ALBERTA E	PO BOX 1209, WELAKA FL	1100	4.6	27	13
411226920007800126	HILL WILLIAM PAUL	2873 OLD VILLA RICA RD, POWDER SPRINGS GA	1100	4.6	27	13
411226920007800128	DAVIS MARGARET C	PO BOX 492, WELAKA FL	1100	4.6	27	13
411226920007800136	WELAKA DREAMER INC	PO BOX 1009, NEW YORK CITY NY	1100	4.6	27	13
411226920007800137	WILKISON JULIAN F + PAMELA L H/W	PO BOX 82, WELAKA FL	1100	4.6	27	13
411226920007800170	MCCLARNEY LINDA G + JAMES G H/W	116 KAREN CT, PALATKA FL	1100	4.6	27	13
451126879000000000	DIXON LOUISE W REVOCABLE TRUST	PO DRAWER F, JACKSONVILLE FL	1100	4.6	27	13
451126879000000000	MCGAULEY GILBERT E + JEANNETTE B	PO BOX 205, WELAKA FL	1100	4.6	27	13
451126879000000000	VICKERS ROBERT + KATIE H/W + BRAD +	1040 BACKBEAN RANCH LANE WEST, JACKSONVILLE FL	1100	4.6	27	13
451126879000000000	BRANDT JOYCE B + WILLIAM E H/W	8646 RANCHWOOD LN, ST AUGUSTINE FL	1100	4.6	27	13
451126879000000110	REEDER ROBERT E + DENNIS L COUSINS	573 NASSAU CT, ORANGE PARK FL	1100	4.6	27	13
451126879000000120	HARMSTEAD GARY	12 HOCKEY DR, SATSUMA FL	1100	4.6	27	13
451126879000000130	MAXWELL JOHN + WILMA	PO BOX 129, WELAKA FL	1100	4.6	27	13
451126879000000000	CURTIN JAMES T	1816 ALICE AVE, WINTER PARK FL	1100	4.6	27	13
451126879000000000	LAVEN KENYON S	25 SCOTT ST, SATSUMA FL	1100	4.6	27	13
451126879100000000	GROOVER HELEN M	PO BOX 744, WELAKA FL	1100	4.6	27	13
451126879100000000	GOUKER PHILLIP E+JANICE JURGENSOHN	PO BOX 739, WELAKA FL	1100	4.6	27	13
451126879100000000	WELAKA (TOWN OF)	PO BOX 1098, WELAKA FL	1100	4.6	27	13
451126879100000000	BAILEY WILLIAM J + ELIZABETH M H/W	PO BOX 1013, WELAKA FL	1100	4.6	27	13
451126879100000000	THIELMAN GEORGE H	PO BOX 1182, WELAKA FL	1100	4.6	27	13

**LIST OF PROPERTIES IN DAM FAILURE FLOOD BOUNDARY
KIRKPATRICK DAM POSTULATED FAILURE-SUNNYDAY CONDITIONS**

Parcel Identification Number	Owner Name	Site Address	Cross-Section ID Number	Peak Conditions		Initial Floodwave Arrival Time (hrs)
				Floodwave Elevation (ft-NGVD)	Floodwave Arrival Time (hrs)	
451126879100000000	SMARTZ PAUL M & NORMA J	57 CAREFREE DR PO BOX 204, WELAKA FL	1100	4.6	27	13
451126879100000000	WADDELL SHERBERT A	381 TERRELL DR SW, MARIETTA GA	1100	4.6	27	13
451126879100000000	MCMAHAN DIANE Y	PO BOX 790, WELAKA FL	1100	4.6	27	13
451126879100000000	ROZIER SAMUEL L + CONSTANCE J H/W	PO BOX 792, WELAKA FL	1100	4.6	27	13
451126879100000000	MAUPIN LIVING TRUST	1111 WINTER SPRINGS BLVD, WINTER SPRINGS FL	1100	4.6	27	13
451126879100001000	BEASLEY MELVIN L + CAROL JAN H/W	3801 CROWN POINT RD #1172, JACKSONVILLE FL	1100	4.6	27	13
451126879100001000	COLE JAMES M JR + MARY H H/W	PO BOX 1139, WELAKA FL	1100	4.6	27	13
451126879100002000	SANDERFORD LEE	PO BOX 6, WELAKA FL	1100	4.6	27	13
451126879100002000	CARTER MELVIN O + SHERAN L H/W	305 PORPOISE POINT DR, ST AUGUSTINE FL	1100	4.6	27	13
451126879100002000	WEBB DONALD R + LINDA W H/W	226 SPORTSMAN DR, SATSUMA FL	1100	4.6	27	13
451126879100002000	MCLEAN DANIEL J + CYNTHIA J H/W	PO BOX 551, WELAKA FL	1100	4.6	27	13
451126879100002000	BYINGTON LEMAN U + PEGGY S	8 LARISA TERR, ORMOND BEACH FL	1100	4.6	27	13
451126879100002000	KING JAMES E REVOCABLE LIVING TRUST	13724 PLEASANT VALLEY DR, JACKSONVILLE FL	1100	4.6	27	13
451126879100002000	KING JAMES E JR + LINDA B H/W	13724 PLEASANT VALLEY DR, JACKSONVILLE FL	1100	4.6	27	13
451126879100002000	LANE MICHAEL R + MYRNA P H/W	233 SPORTSMAN DR, SATSUMA FL	1100	4.6	27	13
451126879100002000	HARRELL THOMAS CARL+JOAN R H/W	PO BOX 1021, WELAKA FL	1100	4.6	27	13
451126879100002000	SMITH STEVE S + TIMOTHY P KELLY +	12538 MASTERS RIDGE DR, JACKSONVILLE FL	1100	4.6	27	13
451126879100002000	FRY EDWARD P + DOROTHY E H/W	108 ANCILLA LN, PONTE VEDRA BEACH FL	1100	4.6	27	13
451126879100002000	SULLIVAN GERARD + SHEILA L H/W	PO BOX 910, WELAKA FL	1100	4.6	27	13
451126879100002000	WILLIAMS HAROLD E + MARILYN H H/W	2828 WIREGRASS RD, LAKELAND FL	1100	4.6	27	13
451126879100002000	MILES HENRY GAINES ET AL	PO BOX 24, WELAKA FL	1100	4.6	27	13
451126879100002000	TREAT JAMES C JR + DIANE M H/W	4717 APACHE AVE, JACKSONVILLE FL	1100	4.6	27	13
451126879100002000	GIBBS EUGENIA H	242 SPORTSMAN DR, SATSUMA FL	1100	4.6	27	13
451126879100002000	PERRY IDA E	PO BOX 1326, WELAKA FL	1100	4.6	27	13
451126879100002000	GRAY GLENN E + SANDRA R H/W	PO BOX 512, HILLSBOROUGH NC	1100	4.6	27	13
451126879100002000	BRINEMAN MERLIN J + BONNIE B	PO BOX 1171, WELAKA FL	1100	4.6	27	13
451126879100002000	PINTAR JOHN R	PO BOX 441, WELAKA FL	1100	4.6	27	13
451126879100002000	FRY EDWARD P + DOROTHY E H/W	108 ANCILLA LN, PONTE VEDRA BEACH FL	1100	4.6	27	13
451126879100002000	LAING JOHN B + JUDITH P H/W	361 N CENTRAL AVE, UMATILLA FL	1100	4.6	27	13
451126879100002000	HAGGARD WILLIAM ANDREW + CAROLE ANN	9335 GALLARDO ST, CORAL GABLES FL	1100	4.6	27	13
451126879100002000	HATCHER LIVING TRUST	PO BOX 3168, LANTANA FL	1100	4.6	27	13
451126879100002000	OSBORN LILLIAN E	PO BOX 399, WELAKA FL	1100	4.6	27	13
2111260000005000050	WALTERS DEBORAH A + TRACY D H/W	109 SHELL HARBOUR WAY, SATSUMA FL	1000	2.7	32	20
2111260000005000051	LANE HOLDINGS LLC	320 HOLLYKNOWE DR, ORANGE PARK FL	1000	2.7	32	20
2111260000005000060	STARK JAMES F + MARIA	PO BOX 485, SATSUMA FL	1000	2.7	32	20
2111260000005000080	SIEGEL SHELDON + MARJORIE A	P O BOX 1102, WELAKA FL	1000	2.7	32	20
211126000000700010	SCHURLEY EDWARD JOSEPH+GLORIA W H/W	101 HARBOUR TR, SATSUMA FL	1000	2.7	32	20
2811260000001000030	GORDON RICHARD G + SUZANNE B H/W	1204 SE 15TH AVE, DEERFIELD BEACH FL	1000	2.7	32	20
281126000000110000	MOORE KENNETH + PENELOPE D H/W	130 EASY DR, SATSUMA FL	1000	2.7	32	20
2811260000002000040	ARMSTRONG JOHN L + VALERIE S H/W	114 SHELL HARBOUR RD, SATSUMA FL	1000	2.7	32	20

**LIST OF PROPERTIES IN DAM FAILURE FLOOD BOUNDARY
KIRKPATRICK DAM POSTULATED FAILURE-SUNNYDAY CONDITIONS**

Parcel Identification Number	Owner Name	Site Address	Cross-Section ID Number	Peak Conditions		Initial Floodwave Arrival Time (hrs)
				Floodwave Elevation (ft-NGVD)	Floodwave Arrival Time (hrs)	
281126000000500010	TAYLOR CELIA PERI TRUST	30 N LASALLE ST SUITE 2850, CHICAGO IL	1000	2.7	32	20
391126000000200000	DINWIDDIE JERRY D + KAREN S H/W	PO BOX 245, SATSUMA FL	1000	2.7	32	20
391126000000220000	LOWE ANDREW CRAWFORD	241 WHITNEY ST, SATSUMA FL	1000	2.7	32	20
391126000000230000	MORRIS JOE T + JEAN A H/W LIFE EST	PO BOX 97, SATSUMA FL	1000	2.7	32	20
391126000000300010	NUCKOLLS WILLIAM S III + SHARON H	PO BOX 530, SATSUMA FL	1000	2.7	32	20
391126000000300030	NUCKOLLS WILLIAM S III + SHARON H	PO BOX 530, SATSUMA FL	1000	2.7	32	20
391126000000620011	WEEKS KENNETH A	PO BOX 7, HAWTHORNE FL	1000	2.7	32	20
391126000000620000	FURLOW ROSA M	494 PLYMOUTH RD, GLENSIDE PA	1000	2.7	32	20
391126000000630010	WATKINS THERESA	3287 BERTHA DR, BALDWIN NY	1000	2.7	32	20
391126000000630000	JACKSON GEORGE F + PATRICIA D H/W	311 SARATOGA DR, SATSUMA FL	1000	2.7	32	20
391126000000200000	CSX TRANSPORTATION	500 WATER ST, JACKSONVILLE FL	1000	2.7	32	20
391126846100600150	MIZE GORDON REX + ELAINE M	PO BOX 118, SATSUMA FL	1000	2.7	32	20
391126846100600010	THOMAS JOHN F + BARBARA J H/W	325 SARATOGA DR, SATSUMA FL	1000	2.7	32	20
391126846100600230	KRAMSKY DENNIS A + NANCY H/W	115 RIVER ROAD, SATSUMA FL	1000	2.7	32	20
391126846100600050	BUCHTEL BONNIE L SWOGGER LIFE EST	PO BOX 440, SATSUMA FL	1000	2.7	32	20
391126846100600170	DAVIS THOMAS A + GERALDINE H/W	PO BOX 131, SATSUMA FL	1000	2.7	32	20
391126846100600190	HARRELL MARY C	PO BOX 350, SATSUMA FL	1000	2.7	32	20
411126000000400001	COPPOLA GARY J	7035 S A1A, MELBOURNE BEACH FL	1000	2.7	32	20
411126000000400130	SANDERFORD LEE Y	PO BOX 6, WELAKA FL	1000	2.7	32	20