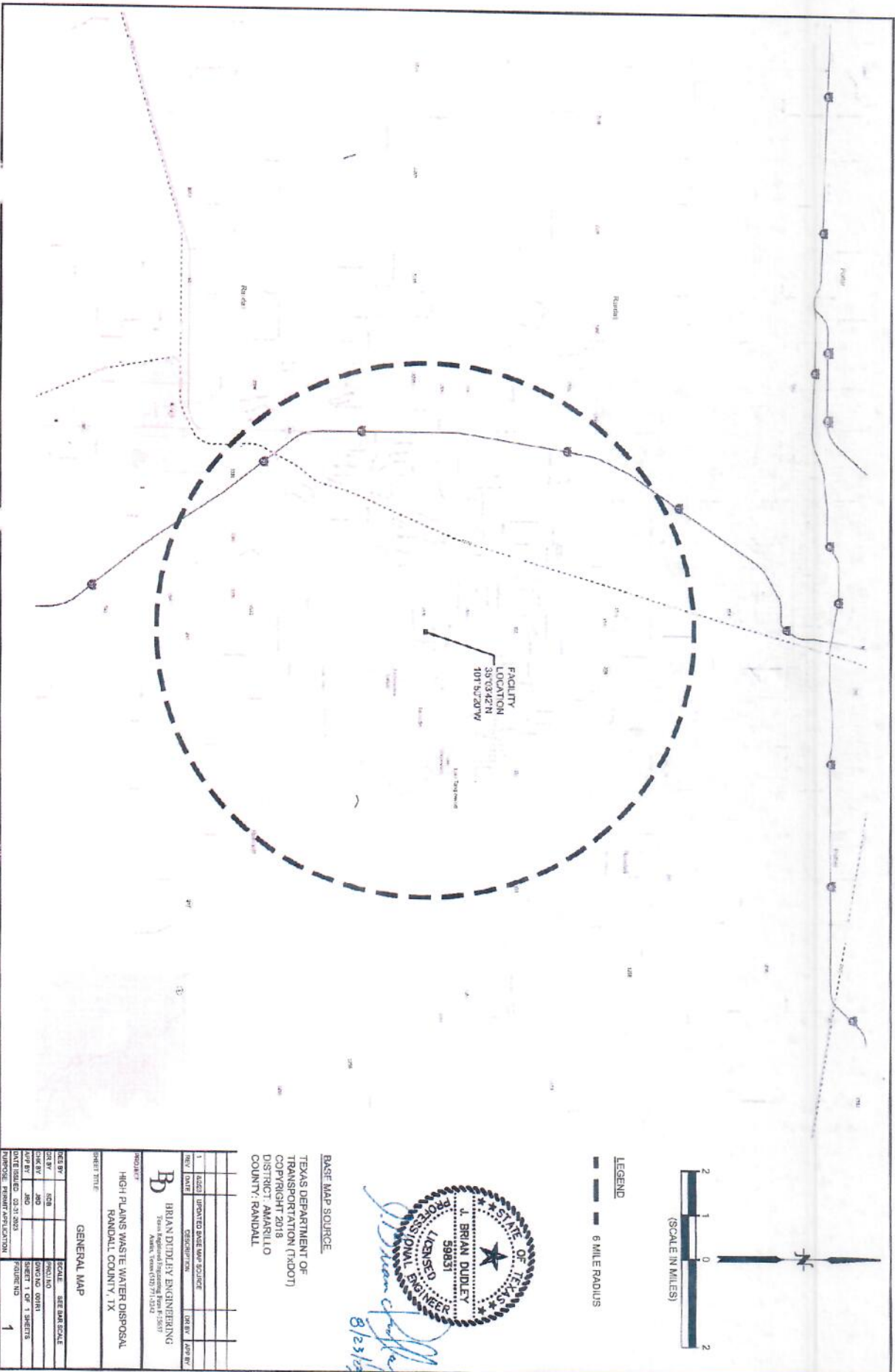
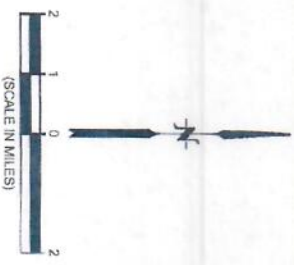


FIGURES



FACILITY LOCATION
 35 03 42 N
 107 56 20 W



LEGEND
 6 MILE RADIUS



BASE MAP SOURCE
 TEXAS DEPARTMENT OF
 TRANSPORTATION (TxDOT)
 COPYRIGHT 2019
 DISTRICT: MARSHALL
 COUNTY: RANDALL

B BRIAN DUDLEY ENGINEERING
 7000 Maple Street, Suite 100
 Amarillo, Texas 79121
 (806) 335-1589

PROJECT
 HIGH PLAINS WASTE WATER DISPOSAL
 RANDALL COUNTY, TX

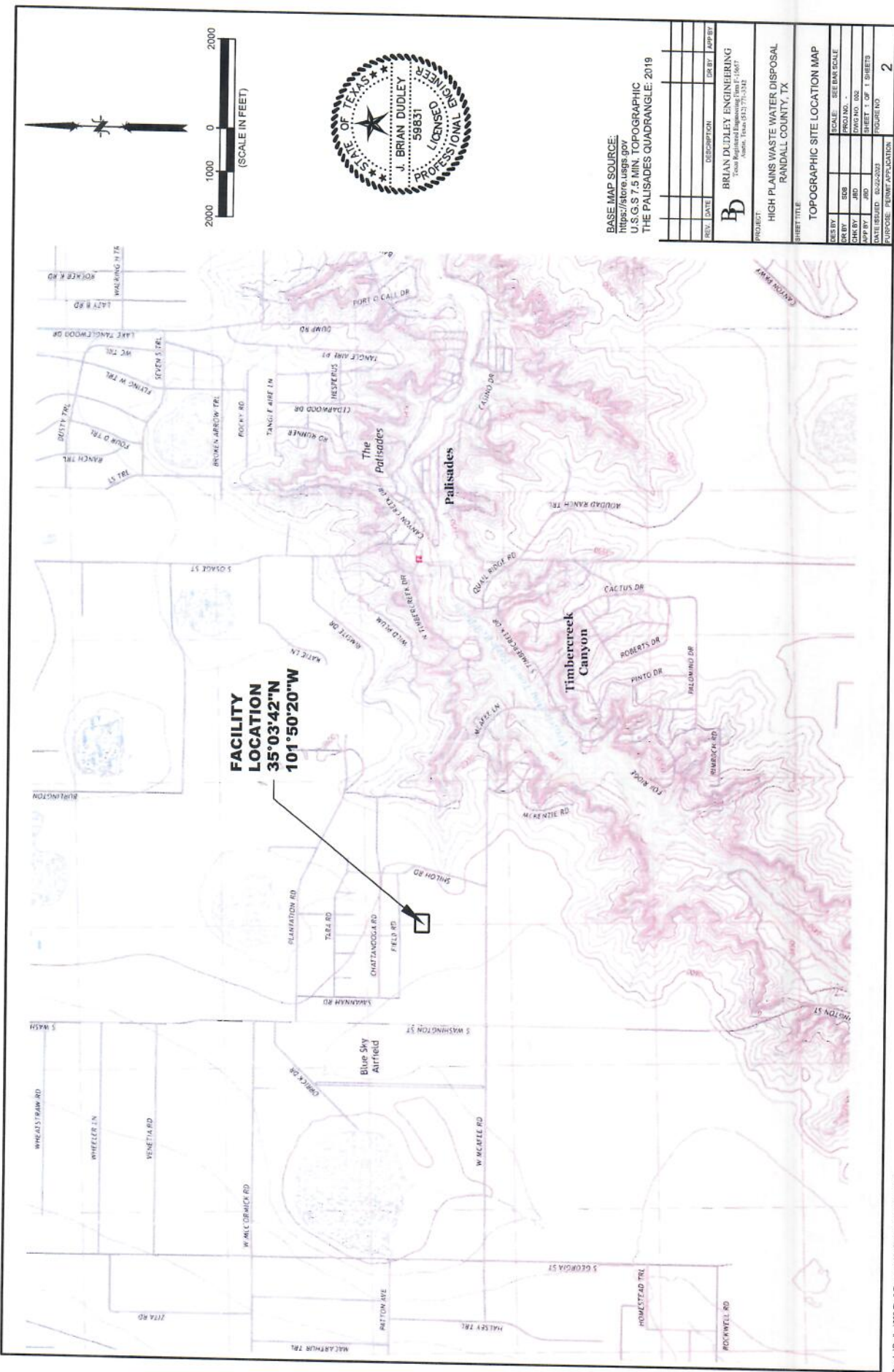
SHEET TITLE
 GENERAL MAP

REV	DATE	DESCRIPTION	DRN BY	APP BY
1		UNPUBLISHED BASE MAP SOURCE		

DESIGNED BY	SCALE	SEE MAP SCALE
JMD		

DATE ISSUED	SHEET NO.	TOTAL SHEETS
03-31-2003	1	1

PURPOSE: PRELIMINARY PLANNING



BASE MAP SOURCE:
<https://store.usgs.gov>
 U.S.G.S 7.5 MIN. TOPOGRAPHIC
 THE PALISADES QUADRANGLE, 2019

REV.	DATE	DESCRIPTION	DR BY	APP BY

B BRIAN DUDLEY ENGINEERING
 Texas Registered Engineering Firm E-1687
 10001 Texas 75119-0001

PROJECT: HIGH PLAINS WASTE WATER DISPOSAL
 RANDALL COUNTY, TX

SHEET TITLE: TOPOGRAPHIC SITE LOCATION MAP

DES BY	DES	SCALE	PROJ NO.
CHK BY	JOB	DWG NO.	DWG NO. 002
APP BY	JOB	SHEET 1 OF 1 SHEETS	FIGURE NO
			2

DATE ISSUED: 02-02-2022
 PURPOSE: PERMIT APPLICATION



LEGEND

- 1 MILE RADIUS
- 500 FT RADIUS
- WATER WELL
- AG AGRICULTURE
- C CHURCH
- COM COMMERCIAL
- R RESIDENTIAL



NOTE: THE OWNER'S HOUSE IMMEDIATELY NORTH OF THE SITE IS THE ONLY HABITABLE STRUCTURE WITHIN 500 FT.

BASE MAP SOURCE: <https://store.usgs.gov>

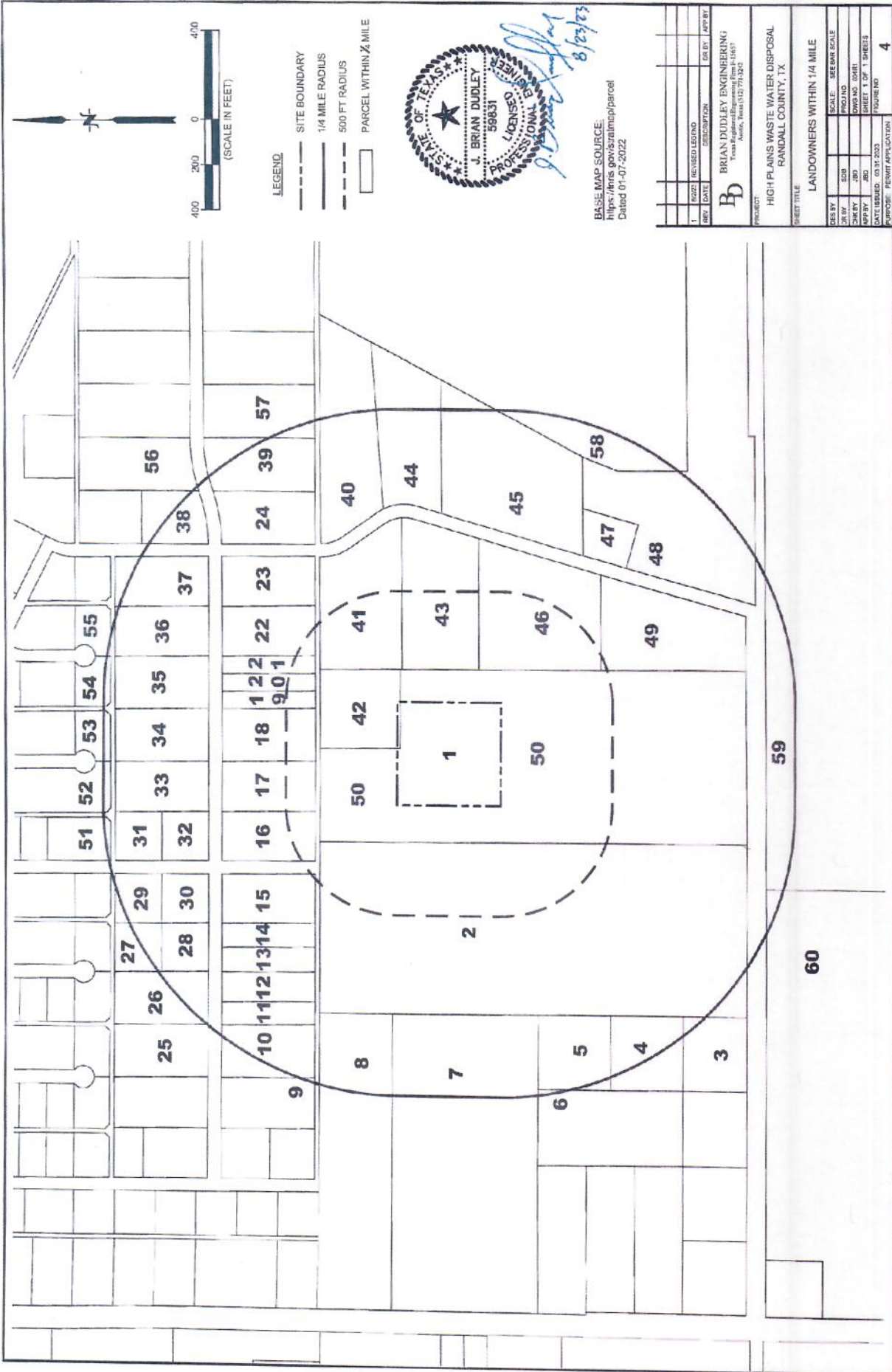
U.S.G.S 7.5 MIN. TOPOGRAPHIC THE PALISADES QUADRANGLE, 2019

REV.	DATE	DESCRIPTION	DR BY	APP BY
1		ADDED NOTE AND TEXT		

Bd BRIAN DUDLEY ENGINEERING
 Texas Registered Engineering Firm F-14867
 Austin, Texas (616) 771-3322

PROJECT: HIGH PLAINS WASTE WATER DISPOSAL
 RANDALL COUNTY, TX

SHEET TITLE	
AERIAL PHOTO AND LAND USE MAP	
DATE BY	SCALE - SEE BM SCALE
DATE BY	PROJ NO
DATE BY	NO
DATE ISSUED	SHEET 1 OF 1 SHEETS
PURPOSE - PERMIT APPLICATION	FIGURE NO
	3



BASE MAP SOURCE:
<https://tris.gov/azra/mpp/parcel>
 Dated 07-07-2022

8/23/23



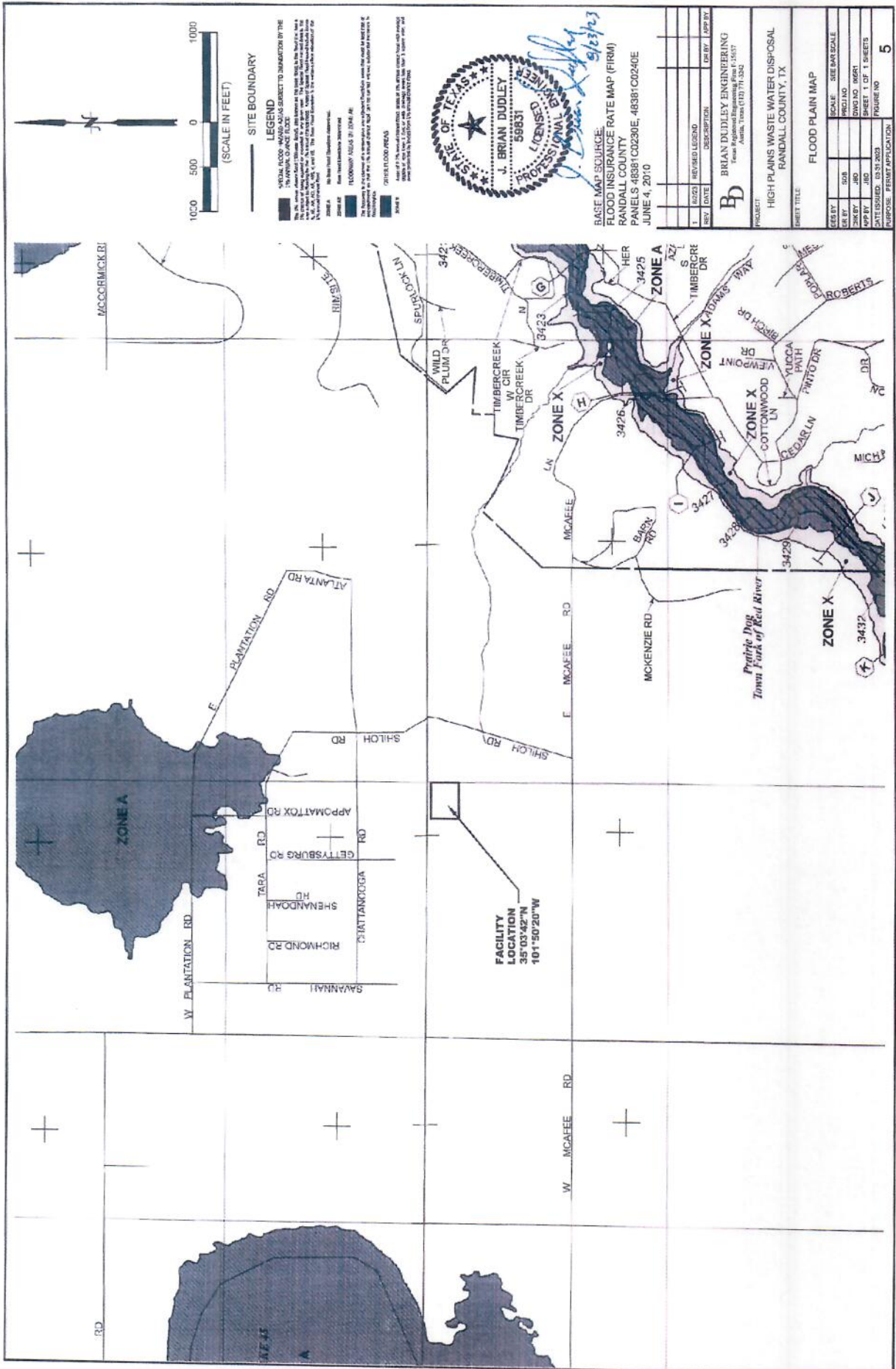
REV	DATE	DESCRIPTION	DR BY	APP BY
1	8/23/23	REVISED LEGEND		

B
 BRIAN DUDLEY ENGINEERING
 1000 West Loop South, Suite 1403
 Austin, Texas 78741-7322

PROJECT
 HIGH PLAINS WASTE WATER DISPOSAL
 RANDALL COUNTY, TX

SHEET TITLE
 LANDOWNERS WITHIN 1/4 MILE

DES BY	DOB	SCALE	SEE MAP SCALE
DR BY		PROJ NO	
CHK BY		DWG NO	
APP BY		JOB	
DATE PLOTTED	08/14/2023	SHEET 1 OF 1 SHEETS	
		FIGURE	
		FIGURE	4



BASE MAP SOURCE:
 FLOOD INSURANCE RATE MAP (FIRM)
 RANDALL COUNTY
 PANELS 48381C0230E, 48381C0240E
 JUNE 4, 2010

REV	DATE	DESCRIPTION	DR BY	APP BY
1	02/22	REVISED LEGEND		

B BRIAN DUDLEY ENGINEERING
 1000 W. 15TH ST. SUITE 100
 ARLING, TEXAS 76010-7134

PROJECT:
 HIGH PLAINS WASTE WATER DISPOSAL
 RANDALL COUNTY, TX

SHEET TITLE:
 FLOOD PLAIN MAP

DES BY	SCALE	SEE MAP SCALE
DRAWN BY	DWG NO	0001
CHECKED BY	JOB NO	
DATE ISSUED	ISSUED BY	
FIGURE NO	FIGURE NO	5

SITE BOUNDARY

LEGEND

SPECIAL FLOOD HAZARD AREAS SUBJECT TO REGULATION BY THE FEDERAL AVIATION ADMINISTRATION (FAA)

FAA CLASS 1

FAA CLASS 2

FAA CLASS 3

FAA CLASS 4

FAA CLASS 5

FAA CLASS 6

FAA CLASS 7

FAA CLASS 8

FAA CLASS 9

FAA CLASS 10

FAA CLASS 11

FAA CLASS 12

FAA CLASS 13

FAA CLASS 14

FAA CLASS 15

FAA CLASS 16

FAA CLASS 17

FAA CLASS 18

FAA CLASS 19

FAA CLASS 20

FAA CLASS 21

FAA CLASS 22

FAA CLASS 23

FAA CLASS 24

FAA CLASS 25

FAA CLASS 26

FAA CLASS 27

FAA CLASS 28

FAA CLASS 29

FAA CLASS 30

FAA CLASS 31

FAA CLASS 32

FAA CLASS 33

FAA CLASS 34

FAA CLASS 35

FAA CLASS 36

FAA CLASS 37

FAA CLASS 38

FAA CLASS 39

FAA CLASS 40

FAA CLASS 41

FAA CLASS 42

FAA CLASS 43

FAA CLASS 44

FAA CLASS 45

FAA CLASS 46

FAA CLASS 47

FAA CLASS 48

FAA CLASS 49

FAA CLASS 50

FAA CLASS 51

FAA CLASS 52

FAA CLASS 53

FAA CLASS 54

FAA CLASS 55

FAA CLASS 56

FAA CLASS 57

FAA CLASS 58

FAA CLASS 59

FAA CLASS 60

FAA CLASS 61

FAA CLASS 62

FAA CLASS 63

FAA CLASS 64

FAA CLASS 65

FAA CLASS 66

FAA CLASS 67

FAA CLASS 68

FAA CLASS 69

FAA CLASS 70

FAA CLASS 71

FAA CLASS 72

FAA CLASS 73

FAA CLASS 74

FAA CLASS 75

FAA CLASS 76

FAA CLASS 77

FAA CLASS 78

FAA CLASS 79

FAA CLASS 80

FAA CLASS 81

FAA CLASS 82

FAA CLASS 83

FAA CLASS 84

FAA CLASS 85

FAA CLASS 86

FAA CLASS 87

FAA CLASS 88

FAA CLASS 89

FAA CLASS 90

FAA CLASS 91

FAA CLASS 92

FAA CLASS 93

FAA CLASS 94

FAA CLASS 95

FAA CLASS 96

FAA CLASS 97

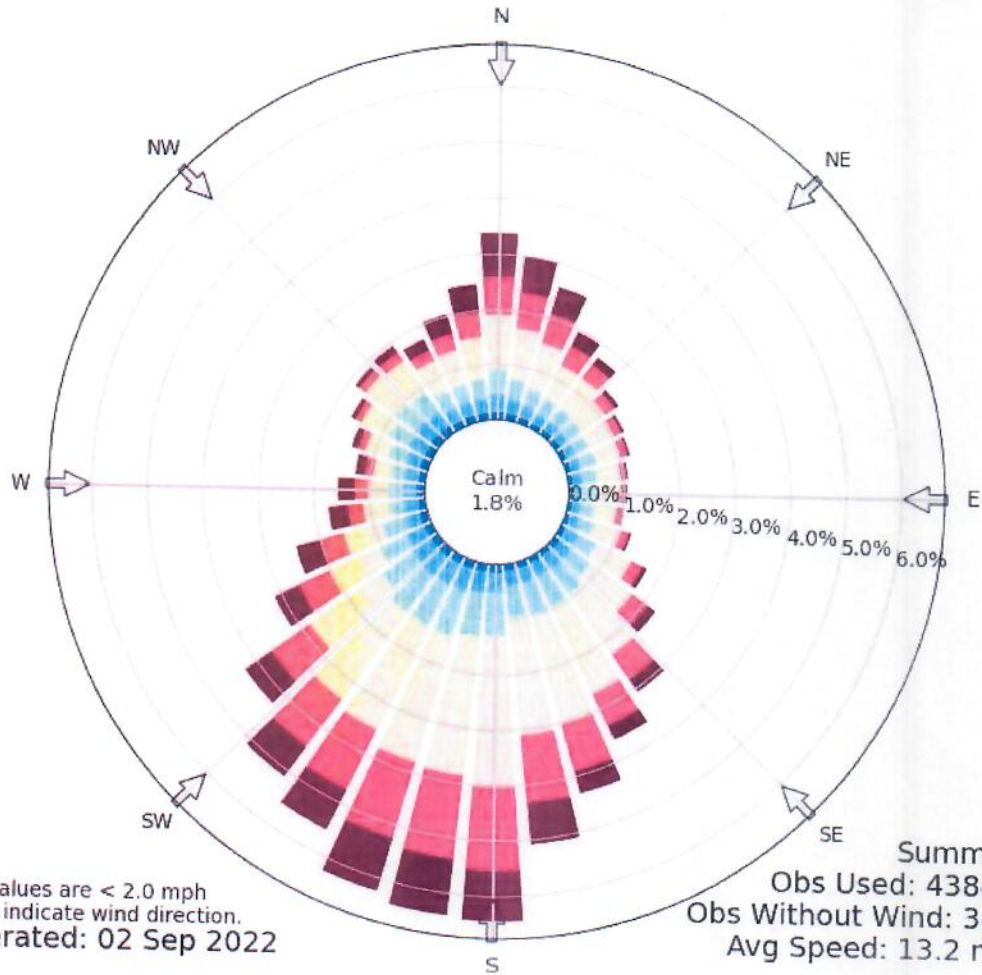
FAA CLASS 98

FAA CLASS 99

FAA CLASS 100

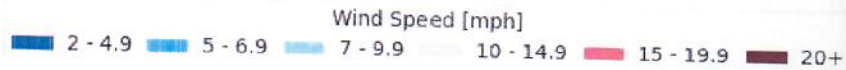


Windrose Plot for [AMA] AMARILLO ARPT(AWOS)
 Obs Between: 01 Jan 1970 03:00 AM - 01 Sep 2022 06:53 PM America/Chicago

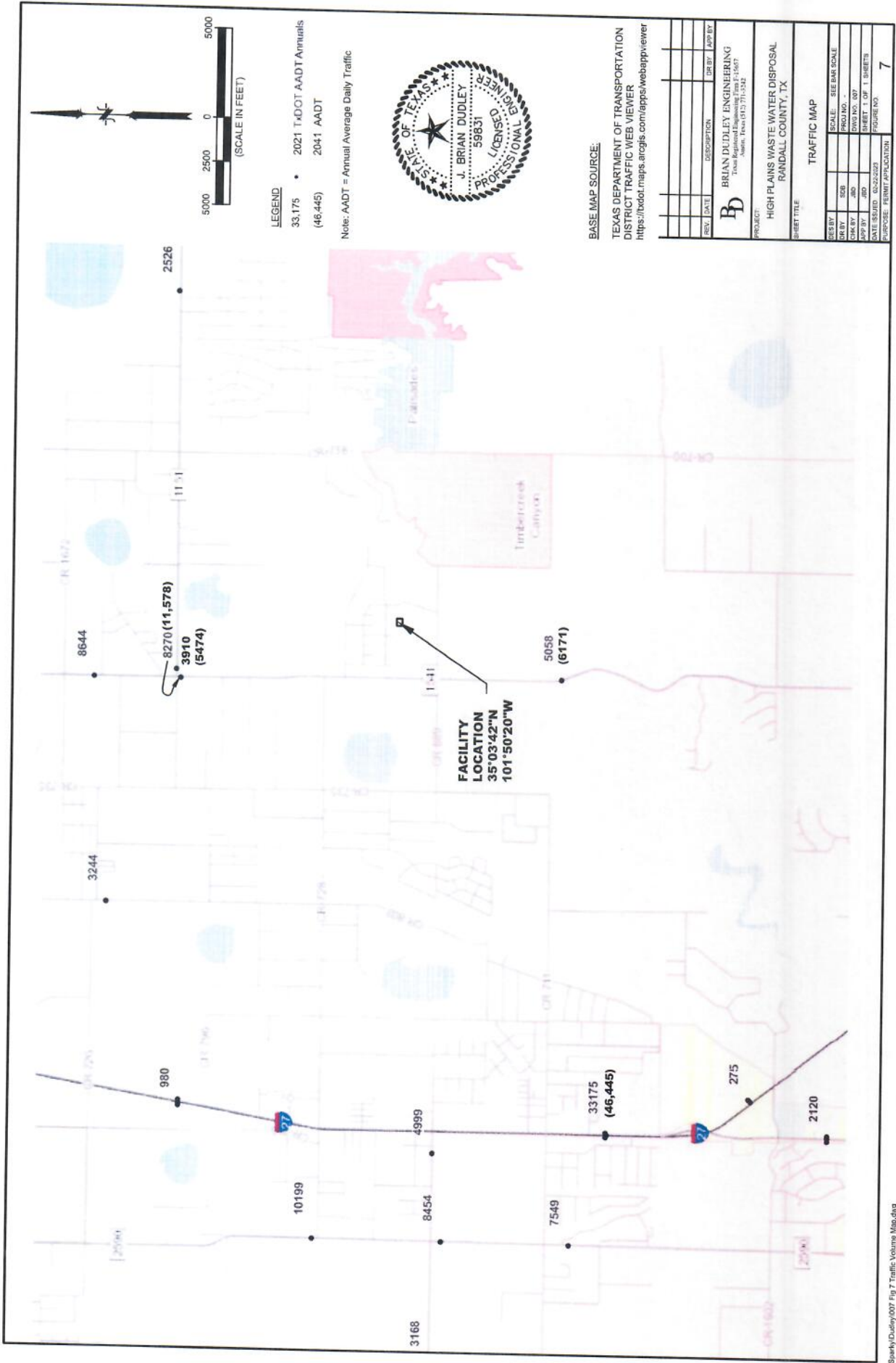


Calm values are < 2.0 mph
 Arrows indicate wind direction.
 Generated: 02 Sep 2022

Summary
 Obs Used: 438408
 Obs Without Wind: 3859
 Avg Speed: 13.2 mph



REV.	DATE	DESCRIPTION	DR BY	APP BY
BRIAN DUDLEY ENGINEERING Texas Registered Engineering Firm F-15657 Austin, Texas (512) 771-3242				
PROJECT: HIGH PLAINS WASTE WATER DISPOSAL RANDALL COUNTY, TX				
SHEET TITLE: WIND ROSE PLOT				
DES BY			SCALE: SEE BAR SCALE	
DR BY	SDB		PROJ NO. -	
CHK BY	JBD		DWG NO. 006	
APP BY	JBD		SHEET 1 OF 1 SHEETS	
DATE ISSUED: 02-22-2023			FIGURE NO.	
PURPOSE: PERMIT APPLICATION			6	



LEGEND
 33,175 • 2021 TxDOT AADT Annuals
 (46,445) • 2041 AADT

Note: AADT = Annual Average Daily Traffic

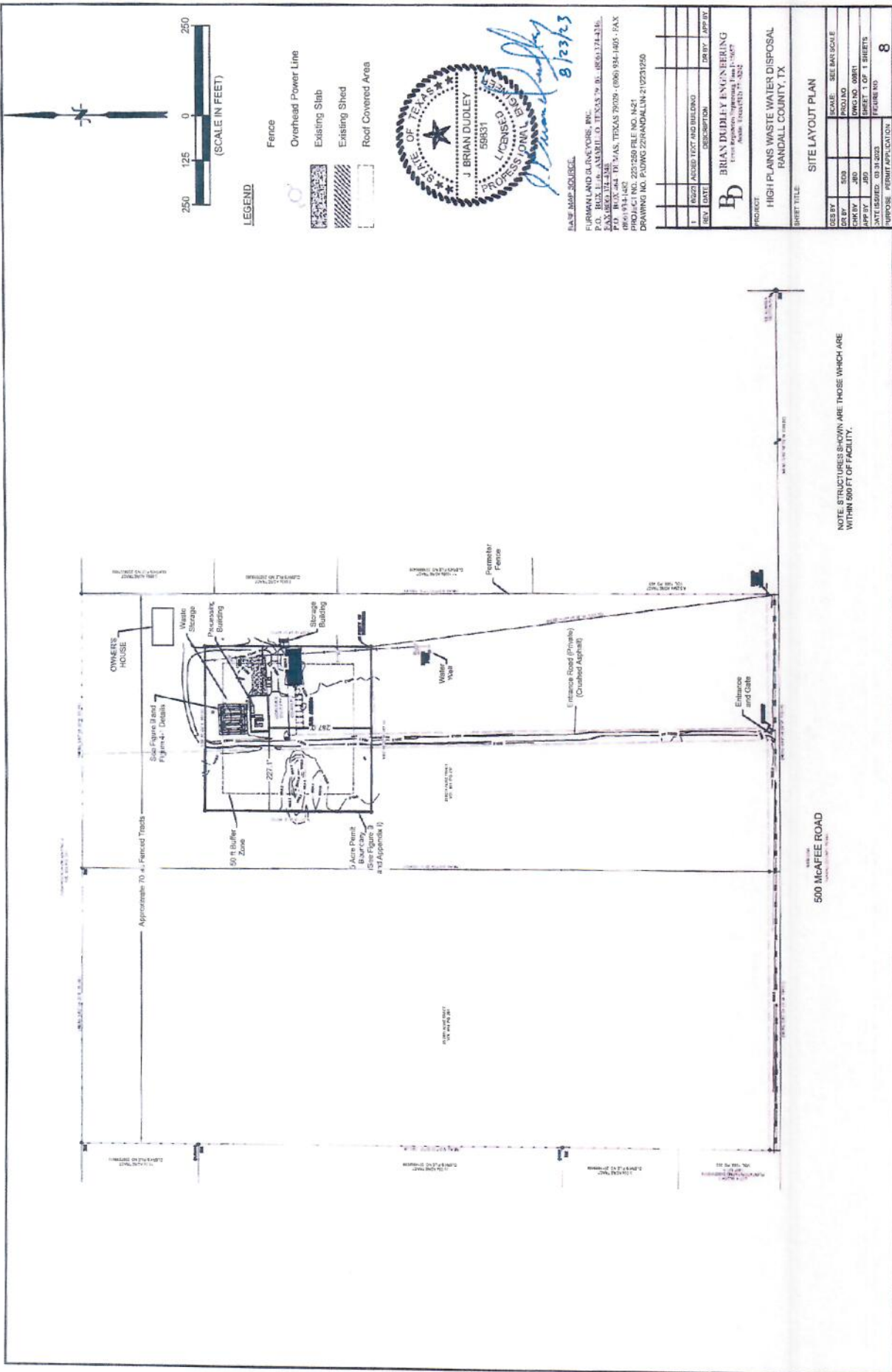


BASE MAP SOURCE:
 TEXAS DEPARTMENT OF TRANSPORTATION
 DISTRICT TRAFFIC WEB VIEWER
<https://txdot.maps.arcgis.com/apps/webappviewer>

REV	DATE	DESCRIPTION	DR BY	APP BY

BD	BRIAN DUDLEY ENGINEERING	
	Texas Registered Engineering Firm F-1467	
	Austin, Texas 012171-0542	

PROJECT: HIGH PLAINS WASTE WATER DISPOSAL RANDALL COUNTY, TX	
SHEET TITLE: TRAFFIC MAP	
DESIGN BY:	SCALE: SEE BAR SCALE
DR BY:	PROJ. NO.:
CHK BY:	DWG. NO.: 007
APP BY:	SHEET 1 OF 1 SHEETS
DATE ISSUED: 02-22-2023	FIGURE NO.: 7
PURPOSE: PERMIT APPLICATION	



NOTE: STRUCTURES SHOWN ARE THOSE WHICH ARE WITHIN 500 FT OF FACILITY.

500 McAFEE ROAD

SITE LAYOUT PLAN

SHEET TITLE

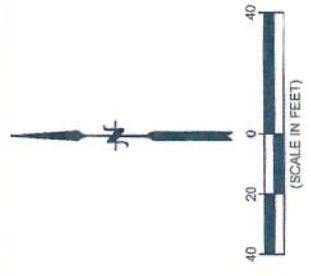
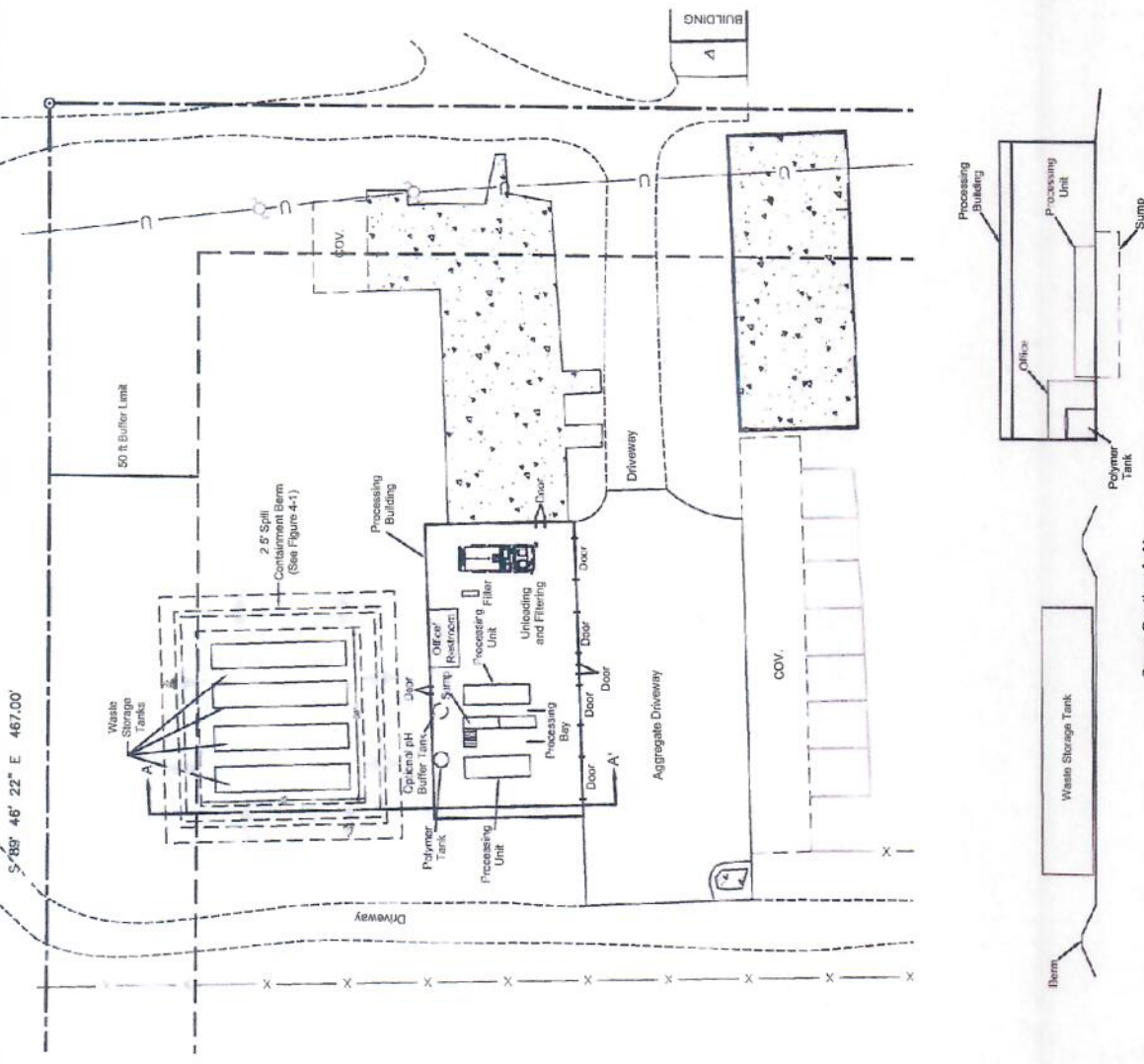
PROJECT
HIGH PLAINS WASTE WATER DISPOSAL
RANDALL COUNTY, TX

DESIGNED BY: []
CHECKED BY: []
DATE: []

REV.	DATE	DESCRIPTION	DR BY	APP BY
1		ADDED TEXT AND BUILDING		

DATE: 10/23/2013
 FIRM: J. B. DUDLEY ENGINEERING, P.C.
 P.O. BOX 118, AMARILLO, TEXAS 79101-0118
 PHONE: (806) 434-1400
 FAX: (806) 434-1402
 PROJECT NO.: 2251250 FILE NO. N41
 DRAWING NO.: PWDWG 22HANDALLIN 210231250





- LEGEND**
- EXISTING SLAB
 - EXISTING ROOF AREA
 - PERMIT BOUNDARY
 - COV.



DANE AARVORGE
 FURNAN, AEG SURVEYORS, PC
 P.O. BOX 419, AMARILLO, TEXAS 79105-0419, (806) 374-4286
 FAX (806) 374-4288
 700 BOX 304, DE WAIN, TEXAS 79029, (806) 994-1404, FAX
 (806) 994-1405
 PROJECT NO. 2231250 FILE NO. 1624
 DRAWING NO. P10WVG 2204ANDALIN-210231250

REV.	DATE	DESCRIPTION	DR BY	APP BY
1	8/23/23	ADDED 50 FT BUFFER LIMIT		

B BRIAN DUDLEY ENGINEERING
 1101 W. 11th Street, Suite 100
 Amarillo, Texas 79107-1532
 PROJECT: HIGH PLAINS WASTE WATER DISPOSAL
 RANDALL COUNTY, TX
 SHEET TITLE: LAYOUT DETAIL
 SCALE: SEE BAR SCALE
 SHEET NO. 0081
 SHEET 1 OF 1 SHEETS
 DATE ISSUED: 08/23/2023
 DRAWING NO. 2231250
 PURPOSE: PERMIT APPLICATION
 FIGURE NO. 9

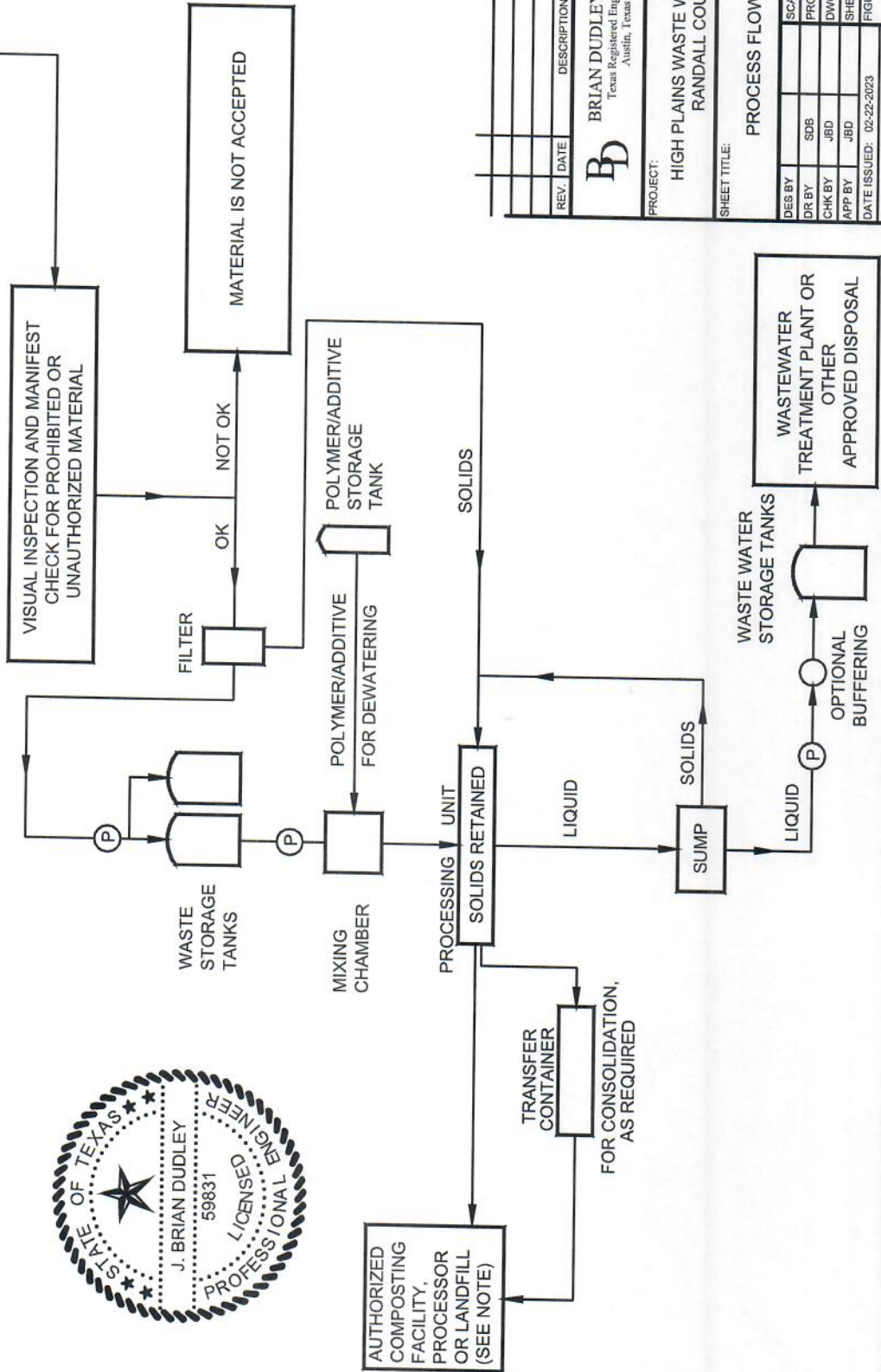
Cross Section A-A
Scale: 1" = 20'

NOTE: IF SOLIDS WILL BE COMPOSTED, GRIT TRAP WASTE WILL EITHER BE HANDLED SEPARATELY FROM OTHER WASTES, OR IT WILL BE TRACKED THROUGH THE PROCESS SO THAT ANY MATERIAL RECOVERED CONTAINING ANY GRIT TRAP SOLIDS OR LIQUIDS WILL NOT BE TRANSPORTED TO A COMPOST FACILITY.



(P) DENOTES PUMP

LIQUID WASTE DELIVERY BY TRUCK



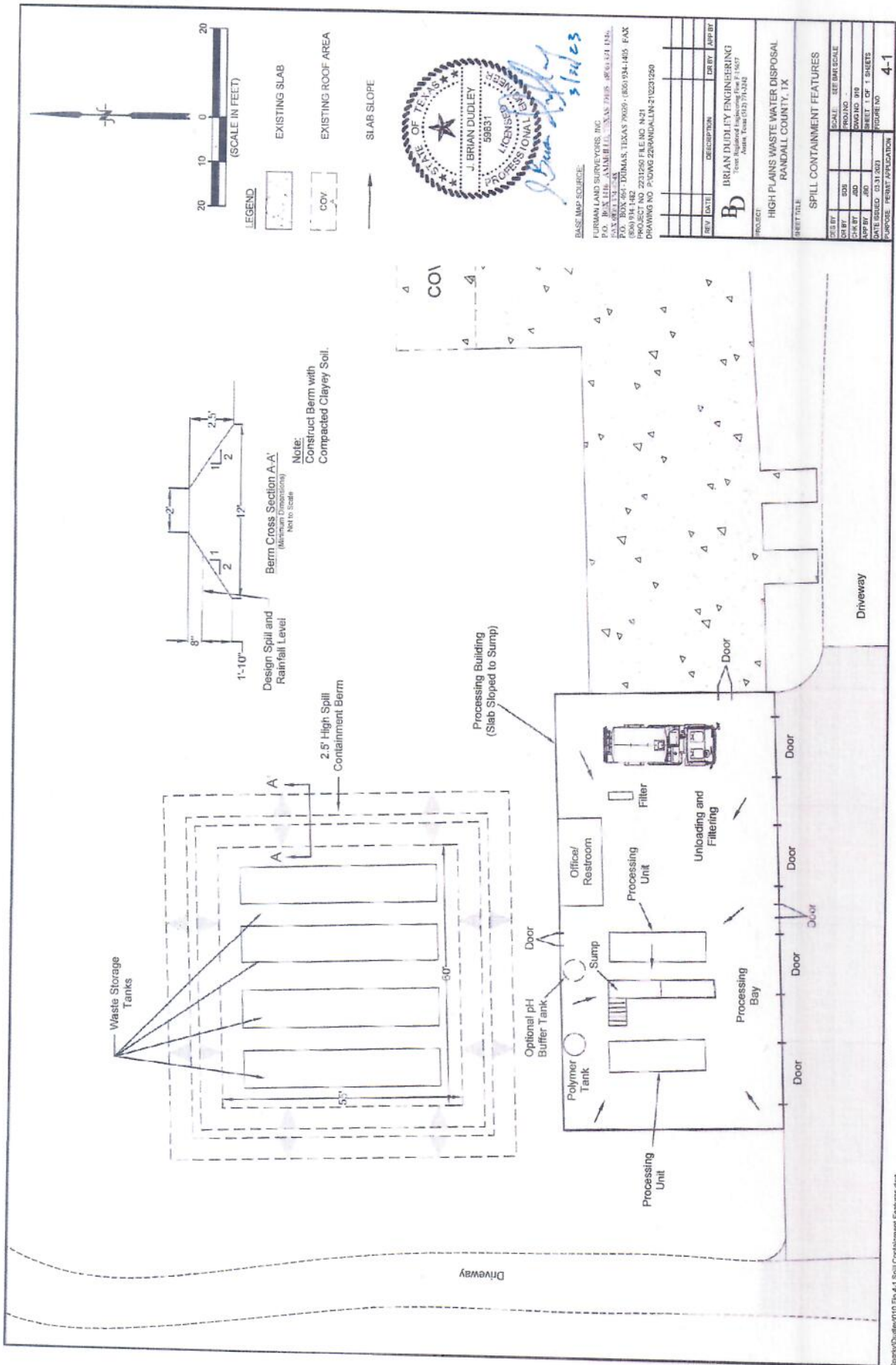
REV.	DATE	DESCRIPTION	DR. BY	APP BY

BD
BRIAN DUDLEY ENGINEERING
 Texas Registered Engineering Firm, F-15657
 Austin, Texas 612.771.3242

PROJECT:
HIGH PLAINS WASTE WATER DISPOSAL
RANDALL COUNTY, TX

SHEET TITLE:
PROCESS FLOW DIAGRAM

DES BY	SDB	SCALE:	SEE BAR SCALE
DR BY	JBD	PROJ. NO.	
CHK BY	JBD	DWG. NO.	011
APP BY	JBD	SHEET 1 OF 1 SHEETS	
DATE ISSUED:	02-22-2023	FIGURE NO.	10
PURPOSE: PERMIT APPLICATION			



BASIC MAP SOURCE:
FURMAN LAND SURVEYORS, INC.
P.O. BOX 118, AUSTIN, TEXAS 78768-0118
P.O. BOX 694, DALLAS, TEXAS 75209-0694
(800) 934-1482
FAX (800) 934-1482
PROJECT NO. 231250 FILE NO. N21
DRAWING NO. P10WG226000ALIN1231250

REV.	DATE	DESCRIPTION	DR BY	APP BY

PROJECT: **BRIAN DUDLEY ENGINEERING**
Professional Engineer License No. 59831
 1404 West 10th Street
 Austin, Texas 78703

SHEET TITLE: **HIGH PLAINS WASTE WATER DISPOSAL**
RANDALL COUNTY, TX

SCALE: SEE BAR SCALE

FIGURE NO: **4-1**

DATE ISSUED: 03/31/2003

FIGURE NO: **4-1**