

PEAKS[®]

PREFERRED



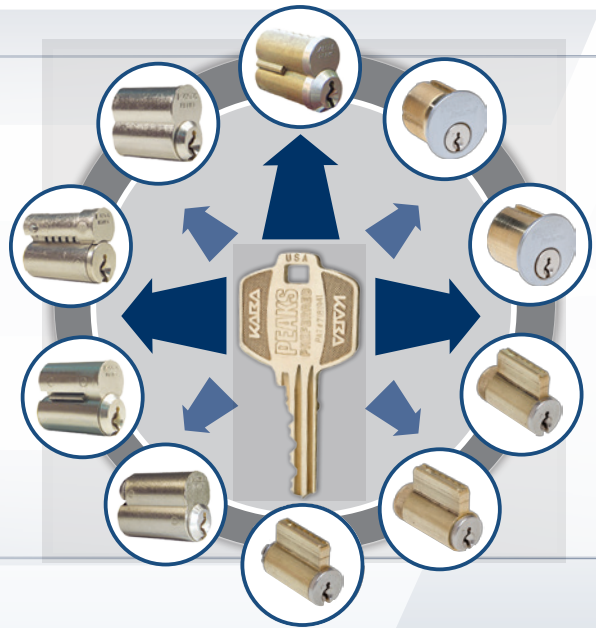
PEAKS[®] Preferred
Patented Key Control

Peaks Preferred cylinder system provides security solutions for institutional and commercial facilities. No other key system provides the flexibility of the Peaks Preferred line.

Facilities of all sizes will benefit from the quality, extensive retrofit ability, and the convenience of a “one key” system.

- Peaks Patented design prevents unauthorized key duplication
- Available in Mortise, Rim, Key-in-Lever/Knob, and many different interchangeable cores
- Retrofits most major brands of Grade 1 and Grade 2 Hardware, thus eliminating the need to replace all hardware
- Reliable pin tumbler technology
- Solid brass plug construction for longevity
- Peaks Preferred is backwards compatible with Peaks Classic, easily allowing you to phase-in upgrades within your facility

“Peaks allows you to integrate all of your cylinders while using a single key. Greater retrofit ability within the system allows the customer to replace only the key system, not the hardware, thus eliminating additional cost to implement a secure, controlled system.”



Airports:

Customs
Jet Ways
Air Traffic Towers
Operations



Retail/Restaurants:

Storefront
Kitchens
Offices
Storage Areas



Medical Facilities:

Pharmacies
Laboratories
Patient Records
Hazmat Areas



Educational:

Classrooms
Libraries
Dormitories
Auditoriums
Office Spaces



Banks & Professional Offices:

Offices
Suites
Computer Rooms
Conference Rooms



Government & Public Facilities:

Museums
Military
Police
Government Chambers
Communication Centers



Manufacturing:

Tool Cribs
Offices
Information Technologies
Shipping/Receiving
Cafeterias

To find out more about Peaks Preferred patented key control system, please consult with a Peaks Dealer, visit our website at www.ilco.us or call us at 800-334-1381 or 252-446-3321.



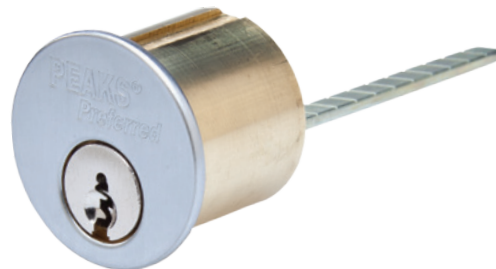


Mortise Cylinder 8401 Peaks Preferred

- 13 scalp finishes (03, 03P, 04, 05, 10, 10B, 26, 26D, 28, 29, 32, 32D, 46)
- 17 cam configurations (same part numbers as ILCO® cylinders)
- Stable cams with only two screw holes
- Scalps feature "Peaks Preferred" for positive identification
- Plugs have tenon in rear to drive the cam
- 3/48 cam screws (866B) hold securely and resist shearing
- Now uses same top and bottom pins as 1095 & 1099 KIK (A2 uses J & B - A4 uses K & F)

Rim Cylinder 8402 Peaks Preferred

- 13 scalp finishes (03, 03P, 04, 05, 10, 10B, 26, 26D, 28, 29, 32, 32D, 46)
- Rigid and lost motion tailpieces (same part numbers as ILCO® cylinders)
- Scalps feature "Peaks Preferred" for positive identification
- Screw cap design retains the plug and tailpieces
- Now uses same top and bottom pins as 1095 & 1099 KIK (A2 uses J & B - A4 uses K & F)

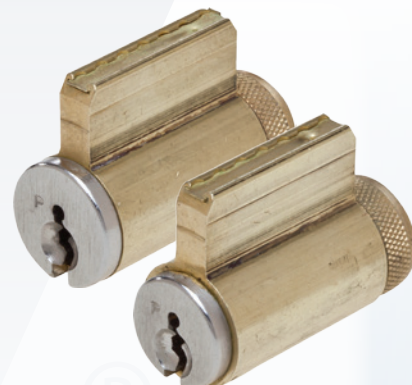


SFIC 8800 and 8900 Peaks Preferred

- 04 and 26D finishes
- SFIC compatible with all Best® core prep applications
- 8800 (capped) are designed for increased longevity & improved key insertion & retraction
- As easy to key as they are to operate
- 8900 (spring cover) zinc cylinders are now manufactured from solid brass
- Solid brass material increases longevity and improves key insertion and retraction

KIK Cylinder 8400 – 1095, 1295, 1099, 1299 Peaks Preferred

- Manufactured with a solid brass shell replacing the former nickel-plated zinc shell
- Spring cover/slide slot has been changed to a dovetail slot, so the spring cover/slide can be slid into the slot and staked at any pin hole position with a punch, to hold it firmly. No more pounding on the pin bible with a tool and hammer trying to stake on a slide cover.
- Rear of cylinder has been redesigned to use the same tailpieces as the Ilco 1599, 1549, 1569, or 1579.
- Includes the 1599TPK assortment of 6 tailpieces, spring cover, and accessories.
- Same top and bottom pins and Peaks Patent pins as before. (A2 uses J & B -- A4 uses K & F)



KIK Cylinder 8400 – 1006 & 1206 Peaks Preferred

- Manufactured with a solid brass shell replacing the former nickel plated zinc shell
- Spring cover/slide slot has been changed to a dovetail slot, so the pin cover/spring slide can be slid into the slot and staked at any pin hole position with a punch, to hold it firmly. No more pounding on the pin bible with a tool and hammer trying to stake on a slide cover.
- Rear of cylinder has been redesigned to use the same tailpieces as the Ilco 1539.
- Includes an assortment of 3 Ilco 1539 tailpieces (S, SA, & SD), spring cover, and accessories.
- Now uses the same top and bottom pins and Peaks Patent pins as the 1099, 1299, 1095, and 1295. (A2 uses J & B -- A4 uses K & F)

KIK Replacement Pin Spring:

- Replacement pin spring cover/slides are part number 8400-00-100 KIK SPRING COVER/SLIDE

To install the pin spring cover/slide, hold the springs down one at the time with an Ilco 910 pin punch, a pick, or any other small item that will press the spring down, and push the slide over the spring. Once the pin spring cover/slide is installed, lightly stake into one pin hole with a center punch to prevent the pin spring cover/slide from moving during use.



What is Key Control?

Key control is establishing policies and procedures to control the process by which keys in a facility are managed and accounted for, thus limiting access to authorized personnel. Sound key control policies establish accountability, while maintaining the security of the facility.

Requirements will vary by facility, therefore establishing a system that works is critical. Peaks Patented Key Control System is unique and can be customized to meet the needs of individual customers.

Important Factors of a Solid System

- A designated person to develop, implement and enforce all policies and procedures
- Policies for ordering, securing, issuing and controlling keys, as well as the key cutting process
- Accurate and up-to-date record keeping; documenting all key issuances and collection of transactions
- Assuring all personnel are educated and adhere to the key control policies set forth by the key system administrator.

All the brand and product names mentioned in this flyer are registered trademarks and exclusive property of authorized manufacturers. Said trademarks or trade names are nominated only for the purposes of information in order to be rapidly identified.



20170711



dormakaba Group

North America:

U.S.A., Canada, Caribbean Islands

Kaba Ilco Corp.

400 Jeffreys Road • Rocky Mount, NC 27804
www.ilco.us • Ph: 800.334.1381 or 252.446.3321
Fax: 252.446.4702