



Photos by Maureen Alfiero

Shop Hours

Opening Day May 7, 2022— November 2022

Our Etsy Shop is open 24/7
etsy.com/shop/Downthelanefarm

We offer curbside pickup 7 days per week
all year long.

Visit our new shopping “Pick-up-on-the-farm” site
www.Downthelanefarmshop.square.site,
Text or call your order to 203-619-3976.

Need a custom order or need it shipped?
That’s easy! Tell us what you need.

18 Reservoir Road
Killingworth, CT 06419
203-619-3976
Maureen@Downthelanefarm.com



Down the Lane Farm

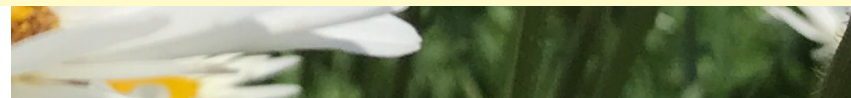
KILLINGWORTH, CONN.

Keeping bees since '93

2022 Catalog

www.Downthelanefarm.com

203/619-3976





To our *bee*-utiful customers,

Welcome! We're happy you're here!

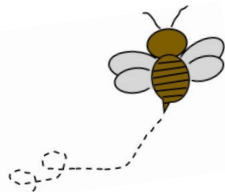
We know there are many lovely shops in our area and you choose Down the Lane Farm. We are incredibly grateful! Our customers mean as much to us as our honey bees. And we love our honey bees!

We invite you to shop our catalog and/or online shop. Our products are made with you and the honeybees in mind. We pair natural, clean ingredients with honey and/or beeswax to create a little magic of our own. We measure and stir, heat and pour while adding plenty of love to the mix. We are super excited about what our customers have been saying and take each comment and suggestion to heart.

Please let us know how we're doing. Find us on social media, visit our website, and if you are buzzing with joy, shout it out with a Google Review. We'd appreciate that.

Thank you for buzzing through. Feel free to reach out anytime. We're here to help.

In peace and honey bee love,
Greg and Maureen
 Greg and Maureen Alfiero



Prices subject to change without notice.

Down the Lane Farm, LLC www.DowntheLaneFarm.com 203-619-3976

GIFTS FROM THE HIVE



A B C

Raw, Unpasteurized Honey

Our honey is filtered and unpasteurized. It's color can range from golden yellow and clear to a dark amber - always with a delicate flavor. When our harvest sells out, we love supporting other beekeepers by purchasing their honey. It's a win, win!

- Price:
- A. \$ 13.00 1 lb Glass Jar
 - B. \$ 7.00 1/2 lb Glass Jar
 - C. \$ 24.00 2 lb Glass Jar
 - D. \$ 7.00 1/2 lb Glass Muth Jar with cork
 - E. \$ 10.00 12 oz Plastic Squeeze Bear
 - F. \$ 10.50 12 oz Decorative Glass Jar
 - G. \$ 10.50 12 oz Skep Glass Jar



D



E



F



G

Honey Dippers

6" wood honey dipper classic style
 \$4.99



GIFTS FROM THE HIVE

Creamed Honey

Our creamed honey is hand-crafted to achieve a smooth and spreadable texture

Price: \$15.00 / lb



Have you ever wondered what creamed honey is?

We get asked quite a bit. The answer is easy. It's honey, just a little different.

Our Creamed Honey is hand-crafted from pure, raw Connecticut wild-flower honey. Preferred in Europe over liquid honey, creamed honey is considered quite the luxury having a smooth, butter-like or caramel-like texture that is perfect as a spread but preserves the goodness of raw honey. Its consistency makes it easy to spread, easy to store, and easy to enjoy.

The natural properties of honey are not changed to make Creamed Honey. We do not pasteurize our honey or add anything extra. So, what makes it *creamed*? It's the size of the sugar crystals. When your honey crystallizes on your pantry shelf due to cool temperature, those crystals are large and you can feel them on your tongue. Creamed honey sugar crystals are so small that you only taste the smooth even texture and creaminess of the honey.



Creamed Honey shown on Left; Liquid Honey shown on right.

Wet-it! Cloths

Wet-it cloths are designed to absorb like a sponge and wipe like a cloth. They replace ordinary paper towels and sponges. Wet-it cloths are extremely versatile, streak-free, lint-free and stylish. Not only that, they are reusable, sustainable, biodegradable and compostable. 70% Cellulose 30% cotton. Measures 6.75" x 8"



Super easy to keep clean.

- * Dishwasher—top rack
- * Washing machine
- * Wet cloth and microwave for 3 minutes (caution hot)
- * Place into boiling water

Choose from:

Honey Bee

Queen Bee

Rooster

Dog Lovers

Cat Lovers

Lavender & Herbs

\$5.95 each



B-Organic

Organic Cotton Produce Bags



Keep your vegetables and fruits fresher longer. Made from organic cotton. All designs are made from wasted fruits & vegetables and turned into inks. These bags are reusable, sustainable, biodegradable and compostable.

Adds weeks to freshness.

Choose from: **FRUITS** or **VEGETABLES**

Small - 9 1/2" x 10"
 Medium 14 1/2" x 14"
 Large 14" x 19"

Small, Medium, Large
\$8.00, \$10.00, \$12.00





Down the Lane Farm Bee Friendly Farm Blend

Enjoy a delicious, healthy blend of honey bee favorites.
Enjoy it hot or cold!

Lavender, Mint, Dandelion, and Nettles. Sourced and packaged by Savvy Tea of Madison, CT.

Price: \$12.00 1.8 oz



SP Water™ (Smell Pretty)

Make your world *Smell Pretty*.
Contains Witch Hazel and a blend of essential oils.
Great as air freshener. Use on your yoga mat.

Price: \$7.50

3 AMAZING SCENTS
Cozy (Orange Cinnamon Blend)
Relaxed (Lavender Blend)
Energized (Lemongrass Blend)

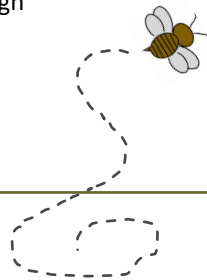
Stainless Steel Infuser Basket



A definite must have for tea lovers. This universal *infuser* rests nicely inside most cups, mugs and teapots.

4-1/2" widest point x 3" high

Price: \$4.99



Beeswax Lip Balm

This fabulous lip balm is a must-have! Keep your lips soft with Beeswax and Shea Butter.

Price: 3.00

CHOOSE FROM 6 GREAT SCENTS:
Lavender, Lemongrass,
Blue Raspberry, Peppermint,
Honey, or Unscented



Beeswax 'n Honey Hand Salve

Contains Beeswax, Pumpkin Seed Oil (anti-inflammatory benefits), Sweet Almond Oil (helps dry, itchy skin), Apricot Kernel Oil (promotes healing of dry, chapped skin), Honey, and Vitamin E. It is **PACKED** with skin loving ingredients. Great for lips, too!

Net Wt 1.6 oz filled tin

Price: 12.00

NEW MINI SIZE
Price: \$3.99



Down the Lane Farm Don't Bite Me Spray™

Enjoy nature longer with all natural ingredients including 100 % NATURAL Cedarwood, Peppermint, Geranium, Lemongrass and Citronella. Not only will you feel good about using a natural product, but it really works!

Deet free. Not tested on animals.

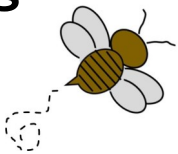
4oz Spray Bottle

Price: \$7.50



100% BEESWAX CANDLES

- * NATURAL AIR PURIFIER
- * HAND POURED AND HAND ROLLED
- * DOWN THE LANE FARM CANDLE CARE CARD INCLUDED



Honey Bee Pillar

8 oz
2.75H x 2.5"w Pillar
Burn Time 32 hours
Price: \$15.00



Rolled Pillar

5 oz
2.25" x 4" Pillar
Burn Time 10 hours
Price: \$12.75



Votive

1.8oz
Burn Time 15 hours
Price: \$3.25



Tea Lights

.6 oz
Burn Time 3-5 hours
Price: \$.99



8" Rolled Tapers

Price: **3/4" Diameter \$8.00**
Burn Time 7 hours
1" Diameter \$10.00
Burn Time 10 hours



Beeswax Candle Snugs

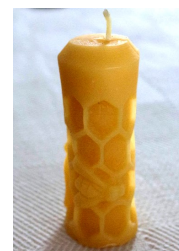
Is your taper too small for the holder? Warm the sheet in your hands and wrap around base of candle. Trim or add another sheet if necessary.
Contains: (4) 1" x 4" sheets 100% beeswax

Price: \$3.99



Little Owl

1.2 oz
2.5" W x 2" tall
Burn Time 4 hours +
Price: 3.99



Little Queen Bee Pillar

1.2 oz
1" W x 2-3/4" tall
Burn Time 4 hours +
Price: \$3.99



Bear and Skep

1.8 oz
Burn Time 5 hours
Price: \$5.99



100% BEESWAX CANDLES

- * NATURAL AIR PURIFIER
- * HAND POURED AND HAND ROLLED
- * DOWN THE LANE FARM CANDLE CARE CARD INCLUDED



Skep

1.9 oz
Burn Time 11 hours on a candle plate
Price: \$3.99



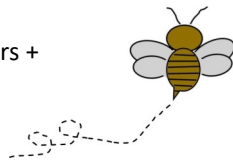
Square Pinecone

9 oz
Burn Time 31 hours
Price: \$15.00



Snowflake

2.3 oz
Hour Burn Time 5 hours +
Price: 5.99



Pillar

2.25" x 4" Pillar
6 oz
Hour Burn time 30 hours
Price: \$13.00

All weights, measurements, and burn times are approximate and may vary.

Down the Lane Farm, LLC www.DowntheLaneFarm.com

BEESWAX MELTS

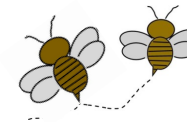


100% Beeswax Melts

Hand Poured
4 Beeswax Melts per Package
Approx 1-1/2" W x 3/4" H
Each melt weights approx. .6 oz

You will always know when someone is burning a beeswax candle or melting a beeswax tart in their home or office. The quality of the air feels better and the natural honey scent is healthy and wonderfully clean.

Price: \$4.15 / 4 pack
\$1.10 each



6 BUZZWORTHY SCENTS

Country Apple
Apricot Peach
Maple Cream
Lavender
Natural Beeswax

New: Cinnamon Bun



GLYCERIN SOAP



- * CONTAINS HONEY AND OTHER NATURAL INGREDIENTS
- * AVAILABLE IN GOAT'S MILK SOAP OR HONEY SOAP



A little honey in this glycerin soap is loved for sensitive skin. Great for infants, children and adults. Ingredients: Coconut Oil, Palm Oil, Safflower Oil, Glycerin (kosher of vegetable origin), Goat's Milk, Purified Water, Sodium Hydroxide (saponifying agent), Sorbitol (moisturizer), Sorbitan oleate (emulsifer), Oat protein (conditioner), Honey, Titanium Dioxide (mineral whitener used in opaque soaps), Essential Oils, Fragrance, Loofah. Available in Honey Soap or Goat's Milk Soap

Glycerin Soap Scents

1.6 oz Scented Round	\$2.00
3 oz Scented Round & Bar	\$3.00
4 oz Unscented Bars	\$4.00
5 oz Unscented Bars	\$5.00
Cucumber Melon Loofah	\$6.50

Unscented	Orange Honeysuckle
Honey Almond	Pink Grapefruit
Coconut Ginger Almond	Cucumber Melon
Honey	Lavender
Peppermint	Peppermint Rosemary
Sandalwood Rose	Tea Tree
Lemongrass	Don't see your favorite? Just ask.

FARM FRESH SOAP

- * CONTAINS HONEY, OLIVE OIL, COCOA BUTTER AND OTHER NATURAL INGREDIENTS



Our soap is made from fresh pantry ingredients and may include the following Ingredients: Distilled Water, Cocoa Butter, Olive Oil, Sweet Almond Oil, Rice Bran Oil, Coconut Oil, Palm Oil, Sodium Hydroxide, Shea Butter, Honey, Coffee Grounds, Walnut Shells, Green Tea, Beeswax, Essential Oils, Fragrance, Color: Oxide Pigments

Soap Scents

3 oz	\$5.60
3.5 oz	\$6.04
4 oz	\$7.00
4.5 oz	\$7.44
5 oz	\$8.40
5.5 oz	\$8.84

Original Recipe * Olive Oil

- Unscented
- Bit of Grit—Gardener's Soap
- Lavender
- Honey
- Honey Almond
- Peppermint Rosemary
- Coconut Lime Verbena
- Cucumber Melon
- Sandalwood Rose

NEW Cocoa Butter Bath Bars

- Honey
- Honey Jasmine
- Lavender
- Country Fresh



Our handmade soaps are lightly scented, not overpowering and creates a wonderful, smooth lather

GIFT BOX

EACH FUN, UNIQUE BOX IS BUZZING WITH LOVE AND WARM WISHES

We developed this box for one reason—to bring joy and spread smiles! We hope the receiver feels the warmth of well wishes and hugs from afar. Each box comes with a hand crafted honey bee themed Tea Towel created by North Quarter Quilts of Chester, a Beeswax Candle Card, and of course, we just had to add a customer favorite— honey candies.



#1. Tea Lover Box

12 oz Honey
Wood Honey Dipper
Skep Beeswax Candle
Bee Friendly Farm
Blend Tea
Honey candies

Price: \$40.67

GIFT BOX

#2. Bee Happy Box

12 oz Honey, Wood Honey Dipper, 2 Beeswax Votive Candles, Beeswax 'n Honey Hand Salve, Beeswax Lip Balm, 4oz Farm made Soap, S. P. Water, Honey Candies.

Price: \$61.25.



Any Item, scent and / or Tea Towel design may be substituted by Down the Lane Farm at equal or greater value.

HONEY STRAWS



Honey Straws

CHOOSE FROM

Blackberry Blossom
Wildflower
Orange Blossom
Light Honey

Price: \$.25 each
Try them all!

These straws contain pure honey. An excellent source of healthy, natural energy! Love the no-mess packaging which makes them great for traveling.

Hint: Bite across the end of the straw to pop it open: no need to cut or remove the tip!

These 7" long straws each contain 5 grams of US Grade A Honey.

Food items are not returnable. Flavors may be limited. Check for availability.

Orthodox Union Kosher Certified.

HONEY CANDY



Honey Candy

Power through winter with all-natural honey candy which works great to keep your mouth moist, or soothe a scratchy throat. For the busy bees out there, try these delicious candies when you need a boost of energy and take on whatever life throws at you with a smile on your face.

These candies are gluten free, all natural, made with pure honey and DO NOT contain any corn syrup! No artificial flavors or colors, a true all natural product!

All flavors contain Evaporated Cane Juice, Brown Rice Syrup, and Honey. **Apple:** Citric Acid, Natural Apple Flavor. **Honey Lemon:** Natural Lemon Oil

Note: This product is non-returnable

CHOOSE FROM:

Honey, Lemon Honey, or Apple Honey

15¢ each or bag of 20 pieces \$2.50