



Photo by Maureen Alfiero

### **Shop Hours**

May—November  
Saturdays and Sundays  
11 am—4 pm

Our Etsy Shop is open 24/7  
[etsy.com/shop/Downthelanefarm](https://etsy.com/shop/Downthelanefarm)

We will open during the week by appointment to  
welcome groups. Give us a call to schedule.

Need a speaker? We love talking about honeybees.  
Need a custom order? Let's talk!

18 Reservoir Road  
Killingworth, CT 06419  
203-619-3976  
[Maureen@Downthelanefarm.com](mailto:Maureen@Downthelanefarm.com)



 **Down the Lane Farm**  
Killingworth, Conn.  
*Keeping Bees Since '93*



[www.downthelanefarm.com](http://www.downthelanefarm.com)

203-619-3976

Down the Lane Farm  
Killingworth, Conn.



To our bee-utiful customers,

Thank you for choosing Down the Lane Farm. Our customers mean as much to us as our honey bees. And we love our honey bees!

We invite you to stop into our seasonal shop (May through November), pick up some unpasteurized, Connecticut honey, and talk honeybees with us. We look forward to sharing our observation hive again with you this year. There's something magical about watching honeybees work together in harmony. You'll have to check it out for yourself.

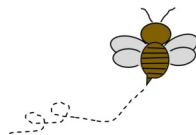
Our products are made with you and the honeybees in mind. We pair natural, clean ingredients with honey and/or beeswax to create a little magic of our own. We measure and stir, heat and pour while adding plenty of love to the mix. We are super excited about what our customers have been saying and take each comment and suggestion to heart.

Please let us know how we're doing. Find us on social media, visit our website, and if you are buzzing with joy, shout it out with a Google Review. We appreciate you!

Thank you for being our loyal and most wonderful customers.

In peace and honey bee love,

Greg and Maureen Alfiero



Down the Lane Farm, LLC

[www.DowntheLaneFarm.com](http://www.DowntheLaneFarm.com)

## GIFTS FROM THE HIVE

### Raw, Unpasteurized Honey

Our honey is filtered and unpasteurized. It's color can range from golden yellow and clear to a dark amber - always with a delicate flavor. When our harvest sells out, we love supporting other beekeepers by purchasing their honey. It's a win, win!

- Price:
- A. \$ 12.00 1 lb Glass Jar
  - B. \$ 6.50 1/2 lb Glass Jar
  - C. \$ 23.00 2 lb Glass Jar
  - D. \$ 7.50 1/2 lb Glass Muth Jar with cork
  - E. \$ 9.50 12 oz Plastic Squeeze Bear
  - F. \$ 10.00 12 oz Decorative Glass Jar
  - G. \$ 10.00 12 oz Skep Glass Jar



A B C



E



D



F



G

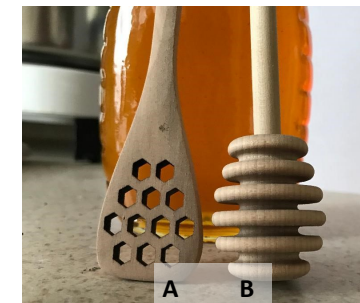
### Honey Dippers

Choose from 2 styles:

- A. Spoon \$2.99
- B. Classis \$4.99

What's your dipping preference?

Each style is 7" long



A B





## Down the Lane Farm Bee Friendly Farm Blend

Enjoy a delicious, healthy blend of honey bee favorites.  
Enjoy it hot or cold!

Lavender, Mint, Dandelion, and Nettles. Sourced and  
packaged by Savvy Tea of Madison, CT.

Price: \$12.00



## SP Water™ (Smell Pretty)

Make your world *Smell Pretty*.  
Contains Witch Hazel and a blend of essential oils.  
Great as air freshener. Use on your yoga mat.

Price: \$7.00

**3 AMAZING SCENTS**  
Cozy (Orange Cinnamon Blend)  
Relaxed (Lavender Blend)  
Energized (Lemongrass Blend)

## Stainless Steel Infuser Basket



A definite must have for tea lovers. This  
universal *infuser* rests nicely inside most cups,  
mugs and teapots.

4-1/2" widest point x 3" high

Price: \$4.99



## Tea Infuser Leaf with Tray



Enjoy a perfectly steeped cup of tea with this silicone  
leaf tea infuser.

Little stainless cup holds the perfect amount of tea.  
Once steeped, place the leaf on the tray for a dripless  
experience.

Price: \$6.40

**COLORS TO CHOOSE FROM**

- Blue
- Purple
- Yellow
- Green
- Red



## Beeswax Lip Balm

This fabulous lip balm is a must-have! Keep your lips  
soft with Beeswax and Shea Butter.

Price: 3.00

**CHOOSE FROM 6 GREAT  
SCENTS:**  
Lavender, Lemongrass,  
Blue Raspberry, Peppermint,  
Honey, or Unscented



## Face Conditioner

Clean and moisturize all at once. Made with skin-  
loving Shea Butter and Sweet Almond Oil

Net WT 2.8 oz  
3oz Jar \$12.00  
6 oz Jar \$23.00

**CHOOSE FROM**  
Cinnamon & Honey  
Lavender & Hone  
Tea Tree & Honey



## Down the Lane Farm Don't Bite Me Spray™

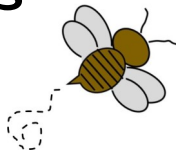
Enjoy nature longer with all natural ingredients includ-  
ing 100 % NATURAL Cedarwood, Peppermint, Gerani-  
um, Lemongrass and Citronella. Not only will you feel  
good about using a natural product, but it really works!

Deet free. Not tested on animals.  
4oz Spray Bottle  
Price: \$7.00



# 100% BEESWAX CANDLES

- \* NATURAL AIR PURIFIER
- \* HAND Poured AND HAND ROLLED
- \* DOWN THE LANE FARM CANDLE CARE CARD INCLUDED



## Honey Bee Pillar

8 oz  
2.75H x 2.5"w Pillar  
Burn Time 32 hours  
Price: \$15.00



## Rolled Pillar

5 oz  
2.25" x 4" Pillar  
Burn Time 10 hours  
Price: \$12.00



## Votive

1.8oz  
Burn Time 15 hours  
Price: 3.00



## Tea Lights

.6 oz  
Burn Time 3-5 hours  
Price: \$.99



## 8" Rolled Tapers

Price: 3/4" Diameter \$8.00  
Burn Time 7 hours  
1" Diameter \$10.00  
Burn Time 10 hours



## Beeswax Candle Snugs

Is your taper too small for the holder? Warm the sheet in your hands and wrap around base of candle. Trim or add another sheet if necessary.  
Contains: (4) 1" x 4" sheets 100% beeswax

Price: \$3.99



## Little Owl

1.2 oz  
2.5" W x 2" tall  
Burn Time 4 hours +  
Price: 3.99



## Little Queen Bee Pillar

1.2 oz  
1" W x 2-3/4" tall  
Burn Time 4 hours +  
Price: \$3.99



## Bear and Skep

1.8 oz  
Burn Time 5 hours  
Price: \$5.99

# 100% BEESWAX CANDLES

- \* NATURAL AIR PURIFIER
- \* HAND POURED AND HAND ROLLED
- \* DOWN THE LANE FARM CANDLE CARE CARD INCLUDED



## Skep

1.9 oz  
Burn Time 11 hours on a candle plate  
Price: \$3.99



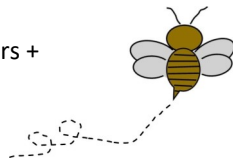
## Square Pinecone

9 oz  
Burn Time 31 hours  
Price: \$15.00



## Snowflake

2.3 oz  
Hour Burn Time 5 hours +  
Price: 5.99



## Pillar

2.25" x 4" Pillar  
6 oz  
Hour Burn time 30 hours  
Price: \$13.00

*All weights, measurements, and burn times are approximate and may vary.*

Down the Lane Farm, LLC

[www.DowntheLaneFarm.com](http://www.DowntheLaneFarm.com)

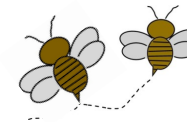
# BEESWAX MELTS



## 100% Beeswax Melts

Hand Poured  
4 Beeswax Melts per Package  
Approx 1-1/2" W x 3/4" H  
Each melt weights approx. .6 oz

You will always know when someone is burning a beeswax candle or melting a beeswax tart in their home or office. The quality of the air feels better and the natural honey scent is healthy and wonderfully clean.



Price: \$4.15 / 4 pack  
\$1.10 each



### FIVE NATURAL SCENTS

Country Apple  
Apricot Peach  
Maple Cream  
Lavender  
Natural Beeswax



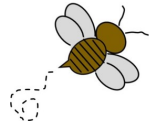
## Beeswax 'n Honey Hand Salve

Contains Beeswax, Pumpkin Seed Oil (anti-inflammatory benefits), Sweet Almond Oil (helps dry, itchy skin), Apricot Kernel Oil (promotes healing of dry, chapped skin), Honey, and Vitamin E. It is PACKED with skin loving ingredients. Great for lips, too!

Net Wt 1.6 oz filled tin

Price: 12.00

# GLYCERIN SOAP



- \* NATURAL INGREDIENTS
- \* AVAILABLE IN GOAT'S MILK SOAP OR HONEY SOAP



A little honey in this glycerin soap is loved for sensitive skin. Great for infants, children and adults. Ingredients: Coconut Oil, Palm Oil, Safflower Oil, Glycerin (kosher of vegetable origin), Goat's Milk, Purified Water, Sodium Hydroxide (saponifying agent), Sorbitol (moisturizer), Sorbitan oleate (emulsifer), Oat protein (conditioner), Honey, Titanium Dioxide (mineral whitener used in opaque soaps), Essential Oils, Fragrance, Loofah. Available in Honey Soap or Goat's Milk Soap

## Glycerin Soap Scents

1.6 oz Scented Round	\$2.00
3 oz Scented Round & Bar	\$3.00
4 oz Unscented Bars	\$4.00
5 oz Unscented Bars	\$5.00
Cucumber Melon Loofah	\$6.50

Unscented	Orange Honeysuckle
Honey Almond	Pink Grapefruit
Coconut Ginger Almond	Cucumber Melon
Honey	Lavender
Peppermint	Peppermint Rosemary
Sandalwood Rose	Tea Tree
Lemongrass	Don't see your favorite? Just ask.

# FARM FRESH SOAP

- \* NATURAL INGREDIENTS



Our soap is made from fresh pantry ingredients and cured for no less than 2 weeks. Our bars may include the following Ingredients: Distilled Water, Olive Oil, Sweet Almond Oil, Rice Bran Oil, Coconut Oil, Palm Oil, Sodium Hydroxide, Shea Butter, Honey, Coffee Grounds, Walnut Shells, Beeswax, Essential Oils, Fragrance, Color: Oxide Pigments

## Soap Scents

3 oz	\$5.60
3.5 oz	\$6.04
4 oz	\$7.00
4.5 oz	\$7.44
5 oz	\$8.40
5.5 oz	\$8.84

Unscented	Honey
Bit of Grit	Honey Jasmine
Lavender	Cucumber Melon
Tea Tree	Honey Almond
Coconut Lime Verbena	Sandalwood Rose
Peppermint Rosemary	



Our soaps are lightly scented, not over powering and create a wonderful, smooth lather that lasts.