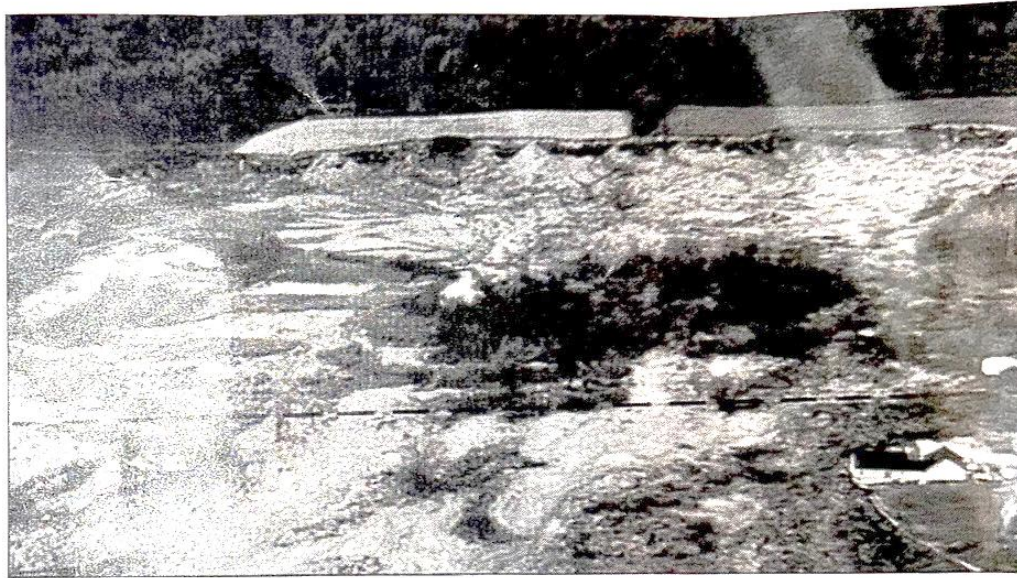




## *Message from citizens Group, Southern Hills Wind Watch*

### **Could Industrial Turbines Increase Landslide Risks to the Tully Valley?**

With the rise in the frequency and severity of storms and subsequent flooding, landslide risks across the U.S. are growing. Recently, in August of 2021 and then again in October, Tully was faced with intense storms resulting in storm run-off which flooded and damaged property and infrastructure in our region. The "atmospheric river," of 8/18/2021 placed Tully in a state of emergency, nearly breaching The Tully Waste Treatment Plant. During that storm event, Hollenbeck Road, directly downhill from several planned 600+ foot turbines, was completely washed out and took nearly a year and a great deal of money to rebuild.



*Image from USGS, showing the after effects of the 1993 Tully Valley Landslide.*

The Tully Valley is particularly vulnerable due to its geological history. The valley was shaped by glacial movements, leaving behind steep slopes and unstable soils. Past landslides in the area, including the notable 1993 Tully Farms Road event, serve as reminders of the destructive potential these

hazards pose- and yet four turbines are being planned for the Bare Mountain area.

The addition of massive 2000 ton industrial-scale wind turbines and their bases, combined with the excavation and infrastructure required for their installation, could exacerbate ground instability especially when thirteen turbines are being planned for areas deemed to be above high risk for landslide zones.

It's essential that our community stays informed about these potential consequences. Protecting our fragile landscape is not just about preserving natural beauty but also ensuring the safety and stability of our homes, families and communities.

Thank you for staying engaged and informed.

- Southern Hills Wind Watch

### **New Websites**

This may come as new news to some and a reminder to others.

The Village and Town websites have been updated and upgraded.

All information from the older sites has been ported over and better organized.

**TOWN:** <https://townoftully.us>

**VILLAGE:** <https://villageoftully.us>

To that end. The village is compiling a directory of all local businesses and organizations. This is *not* advertising, but more a Yellow Pages, for those of us old enough to remember physical phone books.

Visit the village website and click on the directory link for more information and to get your organization listed.

