

ANGEL WING'S ONLINE PERSONAL TRANSFORMATION PROGRAM (WEEK # 26)

**A SYSTEMATIC
APPROACH FROM
A BALANCED
STATE TOWARDS
PERSONAL
EXCELLENCE**

**DEVELOPED BY:
THE ANGEL WING,
LLC**

**PRESENTED BY:
ANGEL WING
PRESENTERS**

DISCLAIMER # I

Disclaimer Statement for Angel Wing's Online Personal Transformation Program

- Please carefully read and understand this disclaimer statement before participating in our online program for self-development and personal transformation.
- The content and materials provided in this online group coaching program are for informational and educational purposes only. The program is not intended to be a substitute for professional medical, psychiatric, or psychological advice, diagnosis, or treatment. The program does not provide medical, psychiatric, or psychological diagnosis or treatment services. Always seek the advice of your physician, psychiatrist, psychologist, or other qualified health provider with any questions you may have regarding a medical, mental, or emotional condition.
- The creators, facilitators, and participants of this online group program are not licensed medical professionals, psychiatrists, or psychologists, and they do not claim to provide any form of medical, psychiatric, or psychological advice or treatment. By participating in this program, you acknowledge and agree that you are solely responsible for your own health and well-being and that you will consult with your healthcare provider(s) as necessary.
- While we strive to provide accurate and helpful information, we make no guarantees, warranties, or representations as to the accuracy, reliability, completeness, or timeliness of any information presented in the program. Any reliance on such information is strictly at your own risk.
- By participating in this online group program, you acknowledge and agree that the creators, facilitators, and participants of the program shall not be held responsible or liable for any claims, damages, or losses resulting from your participation in or reliance on the program's content or materials, including but not limited to any direct, indirect, incidental, special, or consequential damages.
- If you have any concerns or questions about your health or well-being, please consult with your healthcare professional(s) before participating in this online group program. By participating in the program, you acknowledge that you have read, understood, and agree to be bound by the terms of this disclaimer statement.

DISCLAIMER # 2

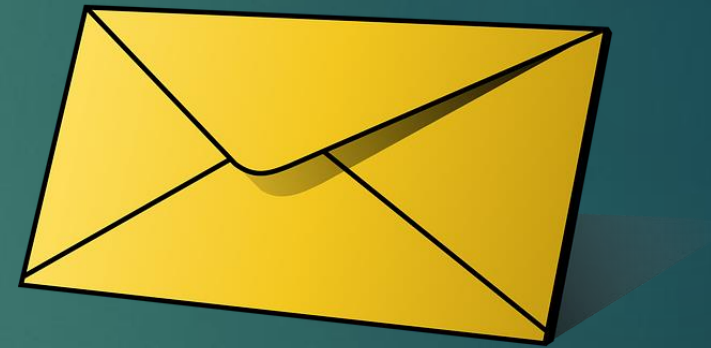
DISCLAIMER STATEMENT FOR ANGEL WING, LLC'S QUANTUM TRANSFORMATION PROGRAM

Angel Wing, LLC proudly offers the Quantum Transformation Program as part of our commitment to fostering growth, rehabilitation, and positive transformation. As you engage with our program and its participants, please consider the following:

- **Program Intent:** The Quantum Transformation Program, operating under Angel Wing, LLC, is designed to provide opportunities for individuals who have faced past challenges, both personal and professional. We aim to help these individuals reintegrate into professional and community settings, leveraging their skills and experiences for positive impact.
- **Varied Backgrounds:** Participants in the Quantum Transformation Program come from diverse backgrounds, some with previous professional issues, including license revocations, or legal challenges such as felony convictions. Angel Wing, LLC believes in the potential for growth and transformation and supports participants in their journey towards a brighter future.
- **Limitation of Liability:** Angel Wing, LLC, its affiliates, staff, and partners shall not be liable for any direct, indirect, consequential, special, exemplary, or other damages arising from the actions, behaviors, or representations of Quantum Transformation Program participants.
- **No Implied Endorsement:** Participation in the Quantum Transformation Program does not imply endorsement of a participant's previous actions or behaviors. Rather, it signifies Angel Wing, LLC's belief in second chances and the capacity for positive change.
- **Educational and Supportive Nature:** The Quantum Transformation Program is primarily educational and supportive. It is not intended to replace formal licensure, professional counseling, or therapeutic interventions.
- **Participant Responsibility:** While Angel Wing, LLC provides support and guidance, the ultimate responsibility for personal and professional conduct rests with each program participant.
- **Continuous Monitoring:** Angel Wing, LLC maintains a rigorous monitoring and feedback system for the Quantum Transformation Program. Feedback from stakeholders is essential for continuous program improvement.
- **Transparency and Communication:** We encourage open communication. Should you have questions or concerns about the program or its participants, please contact our program coordinators.
- By engaging with Angel Wing, LLC's Quantum Transformation Program and its participants, you acknowledge that you have read and understand this disclaimer and agree to its terms.
- *For detailed information about Sachin Karnik and his background, Angel Wing participants are encouraged to contact him directly at sachinkarnik@yahoo.com. Additionally, please be informed that Sachin Karnik was admitted to the Angel Wing QTP (Quantum Transformation Program, our Second Chance initiative) after thoroughly examining all pertinent documents and a comprehensive interview process.*

-- The Angel Wing, LLC

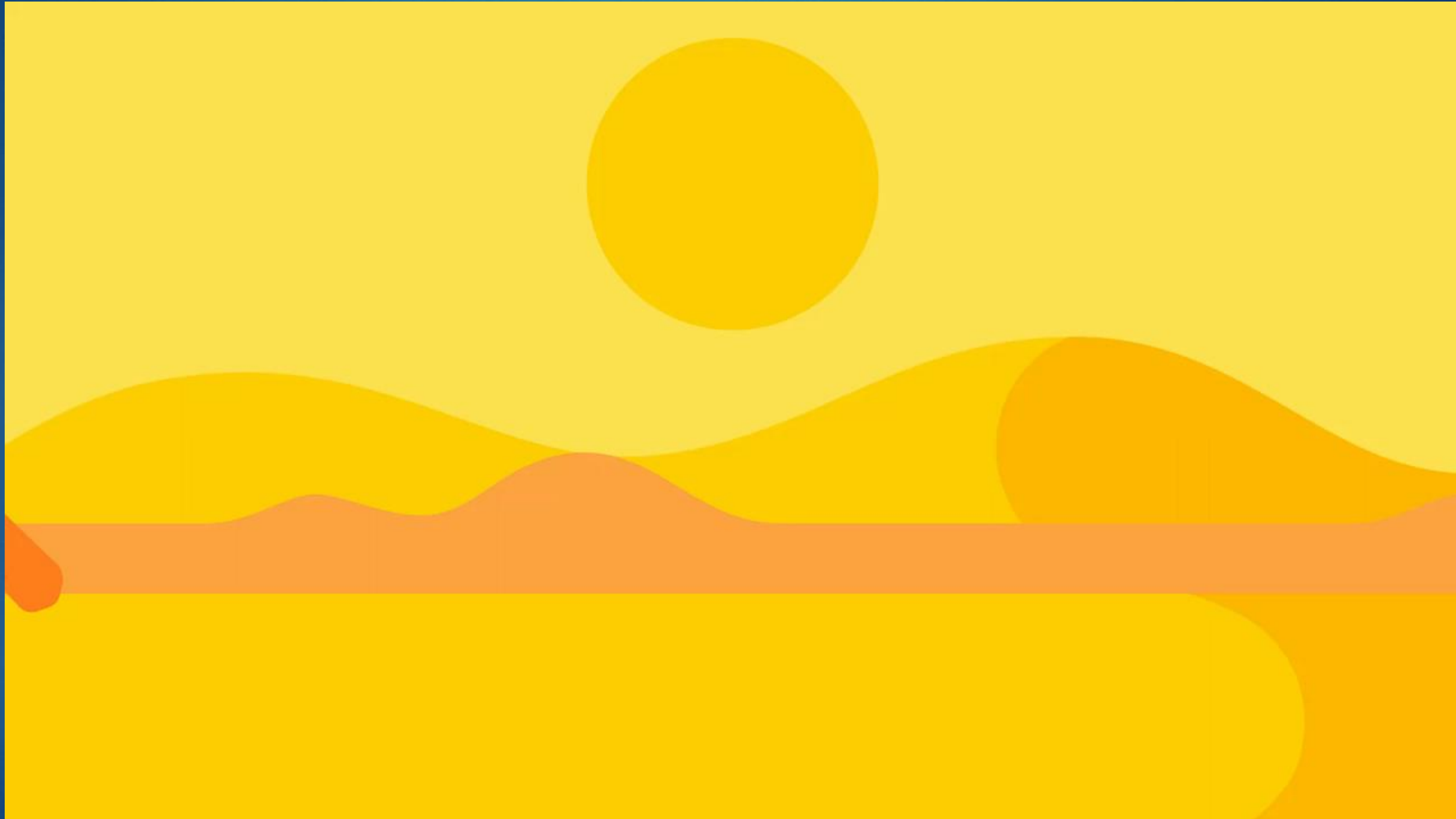
MATERIALS YOU NEED TO HAVE WITH YOU EACH WEEK



ONE BLANK
CARD PER
WEEK



GROUNDING MEDITATION EXERCISE



WEEK # 26
ONLINE WORKSOP BEGINS
NOW...



THE FLOW OF TIME

(WEEKS 14-26)



TEMPORAL FLEXIBILITY

Temporal Flexibility: Developing the ability to switch between different temporal orientations as needed can lead to better decision-making and emotional regulation.

UNDERSTANDING TEMPORAL FLEXIBILITY

Definition and Importance

Temporal flexibility is the cognitive ability to shift one's focus among past experiences, present circumstances, and future possibilities. This adaptability allows individuals to draw lessons from the past, stay grounded in the present, and plan effectively for the future.

THEORETICAL FOUNDATIONS

Temporal flexibility is grounded in psychological theories such as Zimbardo and Boyd's Time Perspective Theory, which categorizes temporal focus into five perspectives: past-negative, past-positive, present-hedonistic, present-fatalistic, and future-oriented. Effective temporal flexibility involves balancing these perspectives to optimize cognitive and emotional functioning.



COMPONENTS OF TEMPORAL FLEXIBILITY

PAST ORIENTATION

Past-Negative: Focus on negative past experiences can lead to regret and rumination.

Past-Positive: Emphasizing positive memories can foster a sense of identity and continuity.

PRESENT ORIENTATION

Present-Hedonistic: Engaging in the moment for pleasure can enhance well-being but may lead to impulsivity.

Present-Fatalistic: Feeling helpless about the present can contribute to passivity and learned helplessness.



FUTURE ORIENTATION

- **Future-Oriented:** Planning and striving for future goals can drive motivation and long-term success but may cause anxiety if overemphasized.

DEVELOPING TEMPORAL FLEXIBILITY

COGNITIVE STRATEGIES



Mindfulness Meditation: Cultivates present-moment awareness, reducing over-identification with past or future.



Cognitive Restructuring: Techniques like reappraisal help reinterpret past events and future worries in a balanced manner.

BEHAVIORAL TECHNIQUES



Goal Setting: Establishing short-term and long-term goals aligns present actions with future aspirations.



Reflection and Journaling: Regular reflection on past experiences and future plans can foster a balanced temporal perspective.

EMOTIONAL REGULATION STRATEGIES

1. **Emotional Awareness**: Recognizing how different temporal focuses affect emotions can guide shifts to more adaptive perspectives.
2. **Adaptive Coping**: Using problem-focused coping for future concerns and emotion-focused coping for past regrets enhances flexibility.



IMPACT ON DECISION-MAKING



Informed Decision-Making



Temporal flexibility allows individuals to integrate lessons from past experiences, current contextual information, and future consequences. This holistic approach leads to more informed and adaptive decisions.



Risk Assessment and Planning



Balancing present enjoyment with future planning helps in assessing risks and making strategic plans. It prevents both reckless decision-making driven by immediate gratification and excessive caution fueled by future anxieties.

IMPACT ON EMOTIONAL REGULATION

Reducing Regret and Rumination

Shifting focus away from past-negative perspectives towards more present or future-oriented thinking reduces rumination and associated negative emotions like regret and sadness.

Enhancing Resilience

Temporal flexibility enables individuals to draw on past successes and future aspirations during challenging present situations, fostering resilience and a positive outlook.

Managing Anxiety

Balancing future-oriented thinking with present-moment engagement can mitigate anxiety by preventing excessive worry about future uncertainties and focusing on actionable present steps.



CONCLUSION

Temporal flexibility is a critical cognitive skill that enhances decision-making and emotional regulation by allowing individuals to adaptively switch between past, present, and future orientations. Developing this flexibility involves cognitive and behavioral strategies that foster balanced temporal perspectives, leading to improved psychological well-being and more effective life management.

QUICK MOVEMENT BREAK - STANDING STRETCHES & MOVEMENTS



KeenanWell

A Keenan Solution

OPEN WORKBOOK # 2

(12 DIMENSION SELF-ASSESSMENT)



[This Photo](#) by Unknown Author is licensed under [CC BY-SA-NC](#)

12 DIMENSIONS

DIMENSION # 1 - Career: This area relates to your professional life, including your job, career aspirations, and work-related goals.

DIMENSION # 2 – Finances: This area relates to your financial situation, including your income, expenses, savings, and investments.

DIMENSION # 3 -Physical health: This area relates to your physical wellbeing, including your fitness level, nutrition, and overall health

DIMENSION # 4 - Mental health: This area relates to your psychological wellbeing, including your emotional and mental health, stress levels, and resilience.

DIMENSION # 5 - Family and relationships: This area relates to your relationships with family members, friends, and significant others.

DIMENSION # 6 - Social life: This area relates to your social interactions and connections, including your participation in social activities and events.

DIMENSION # 7 Personal development: This area relates to your personal growth and self-improvement, including your learning, skills development, and personal goals.

DIMENSION # 8 - Spiritual life: This area relates to your spiritual beliefs, practices, and values, and your sense of purpose and meaning in life.

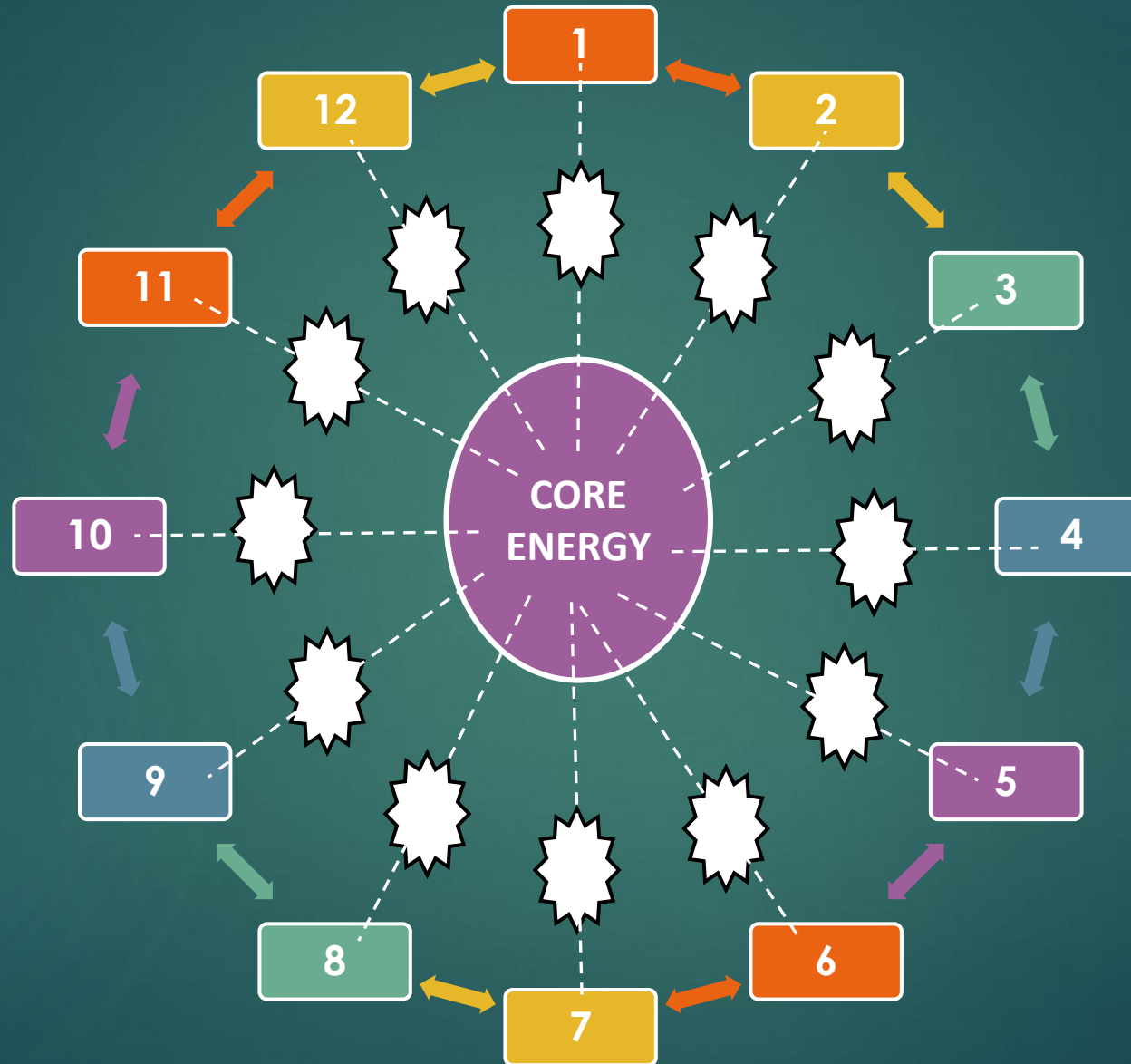
DIMENSION # 9 Recreation and leisure: This area relates to your hobbies, interests, and recreational activities.

DIMENSION # 10 - Environment: This area relates to your physical surroundings and living conditions, including your home, neighborhood, and community.

DIMENSION # 11 Contribution to society: This area relates to your contribution to society, including volunteer work, charitable activities, and community involvement.

DIMENSION # 12 - Life vision: This area relates to your overarching life goals and aspirations, including your vision for your future and the legacy you want to leave behind.

Goal: STATE OF COMPLETE BALANCE IN 12 DIMENSIONS OF LIFE



1999, 2000, 2001, 2002, 2003, 2004, 2005, 2006, 2007, 2008, 2009, 2010, 2011, 2012, 2013, 2014, 2015, 2016, 2017, 2018, 2019, 2020, 2021, 2022, 2023, 2024, 2025, 2026, 2027, 2028, 2029, 2030, 2031, 2032, 2033, 2034, 2035, 2036, 2037, 2038, 2039, 2040, 2041, 2042, 2043, 2044, 2045, 2046, 2047, 2048, 2049, 2050, 2051, 2052, 2053, 2054, 2055, 2056, 2057, 2058, 2059, 2060, 2061, 2062, 2063, 2064, 2065, 2066, 2067, 2068, 2069, 2070, 2071, 2072, 2073, 2074, 2075, 2076, 2077, 2078, 2079, 2080, 2081, 2082, 2083, 2084, 2085, 2086, 2087, 2088, 2089, 2090, 2091, 2092, 2093, 2094, 2095, 2096, 2097, 2098, 2099, 2100, 2101, 2102, 2103, 2104, 2105, 2106, 2107, 2108, 2109, 2110, 2111, 2112, 2113, 2114, 2115, 2116, 2117, 2118, 2119, 2120, 2121, 2122, 2123, 2124, 2125, 2126, 2127, 2128, 2129, 2130, 2131, 2132, 2133, 2134, 2135, 2136, 2137, 2138, 2139, 2140, 2141, 2142, 2143, 2144, 2145, 2146, 2147, 2148, 2149, 2150, 2151, 2152, 2153, 2154, 2155, 2156, 2157, 2158, 2159, 2160, 2161, 2162, 2163, 2164, 2165, 2166, 2167, 2168, 2169, 2170, 2171, 2172, 2173, 2174, 2175, 2176, 2177, 2178, 2179, 2180, 2181, 2182, 2183, 2184, 2185, 2186, 2187, 2188, 2189, 2190, 2191, 2192, 2193, 2194, 2195, 2196, 2197, 2198, 2199, 2200, 2201, 2202, 2203, 2204, 2205, 2206, 2207, 2208, 2209, 2210, 2211, 2212, 2213, 2214, 2215, 2216, 2217, 2218, 2219, 2220, 2221, 2222, 2223, 2224, 2225, 2226, 2227, 2228, 2229, 2230, 2231, 2232, 2233, 2234, 2235, 2236, 2237, 2238, 2239, 2240, 2241, 2242, 2243, 2244, 2245, 2246, 2247, 2248, 2249, 2250, 2251, 2252, 2253, 2254, 2255, 2256, 2257, 2258, 2259, 2260, 2261, 2262, 2263, 2264, 2265, 2266, 2267, 2268, 2269, 2270, 2271, 2272, 2273, 2274, 2275, 2276, 2277, 2278, 2279, 2280, 2281, 2282, 2283, 2284, 2285, 2286, 2287, 2288, 2289, 2290, 2291, 2292, 2293, 2294, 2295, 2296, 2297, 2298, 2299, 2300, 2301, 2302, 2303, 2304, 2305, 2306, 2307, 2308, 2309, 2310, 2311, 2312, 2313, 2314, 2315, 2316, 2317, 2318, 2319, 2320, 2321, 2322, 2323, 2324, 2325, 2326, 2327, 2328, 2329, 2330, 2331, 2332, 2333, 2334, 2335, 2336, 2337, 2338, 2339, 2340, 2341, 2342, 2343, 2344, 2345, 2346, 2347, 2348, 2349, 2350, 2351, 2352, 2353, 2354, 2355, 2356, 2357, 2358, 2359, 2360, 2361, 2362, 2363, 2364, 2365, 2366, 2367, 2368, 2369, 2370, 2371, 2372, 2373, 2374, 2375, 2376, 2377, 2378, 2379, 2380, 2381, 2382, 2383, 2384, 2385, 2386, 2387, 2388, 2389, 2390, 2391, 2392, 2393, 2394, 2395, 2396, 2397, 2398, 2399, 2400, 2401, 2402, 2403, 2404, 2405, 2406, 2407, 2408, 2409, 2410, 2411, 2412, 2413, 2414, 2415, 2416, 2417, 2418, 2419, 2420, 2421, 2422, 2423, 2424, 2425, 2426, 2427, 2428, 2429, 2430, 2431, 2432, 2433, 2434, 2435, 2436, 2437, 2438, 2439, 2440, 2441, 2442, 2443, 2444, 2445, 2446, 2447, 2448, 2449, 2450, 2451, 2452, 2453, 2454, 2455, 2456, 2457, 2458, 2459, 2460, 2461, 2462, 2463, 2464, 2465, 2466, 2467, 2468, 2469, 2470, 2471, 2472, 2473, 2474, 2475, 2476, 2477, 2478, 2479, 2480, 2481, 2482, 2483, 2484, 2485, 2486, 2487, 2488, 2489, 2490, 2491, 2492, 2493, 2494, 2495, 2496, 2497, 2498, 2499, 2500, 2501, 2502, 2503, 2504, 2505, 2506, 2507, 2508, 2509, 2510, 2511, 2512, 2513, 2514, 2515, 2516, 2517, 2518, 2519, 2520, 2521, 2522, 2523, 2524, 2525, 2526, 2527, 2528, 2529, 2530, 2531, 2532, 2533, 2534, 2535, 2536, 2537, 2538, 2539, 2540, 2541, 2542, 2543, 2544, 2545, 2546, 2547, 2548, 2549, 2550, 2551, 2552, 2553, 2554, 2555, 2556, 2557, 2558, 2559, 2560, 2561, 2562, 2563, 2564, 2565, 2566, 2567, 2568, 2569, 2570, 2571, 2572, 2573, 2574, 2575, 2576, 2577, 2578, 2579, 2580, 2581, 2582, 2583, 2584, 2585, 2586, 2587, 2588, 2589, 2590, 2591, 2592, 2593, 2594, 2595, 2596, 2597, 2598, 2599, 2600, 2601, 2602, 2603, 2604, 2605, 2606, 2607, 2608, 2609, 2610, 2611, 2612, 2613, 2614, 2615, 2616, 2617, 2618, 2619, 2620, 2621, 2622, 2623, 2624, 2625, 2626, 2627, 2628, 2629, 2630, 2631, 2632, 2633, 2634, 2635, 2636, 2637, 2638, 2639, 2640, 2641, 2642, 2643, 2644, 2645, 2646, 2647, 2648, 2649, 2650, 2651, 2652, 2653, 2654, 2655, 2656, 2657, 2658, 2659, 2660, 2661, 2662, 2663, 2664, 2665, 2666, 2667, 2668, 2669, 2670, 2671, 2672, 2673, 2674, 2675, 2676, 2677, 2678, 2679, 2680, 26

2 - MY FINANCES (X)

3 – MY PHYSICAL HEALTH (X)

4 – MY MENTAL HEALTH (X)

- Focuses on psychological wellbeing
- Involves emotional and mental health, stress levels, and resilience

5 – MY FAMILY AND RELATIONSHIPS (X)

- Focuses on interpersonal connections
- Involves family, friends, and significant others

6 – MY SOCIAL LIFE (X)

- Focuses on social interactions and activities
- Involves participation in social events and networking

7 – MY PERSONAL DEVELOPMENT (X)

- Focuses on self-improvement and growth
- Involves learning, skill development, and personal goals

8 – MY RELIGIOUS/SPIRITUAL LIFE (X)

- Focuses on religious/spiritual beliefs and practices
- Involves purpose, meaning, and values in life

9 – MY RECREATION AND LEISURE (X)

- **Focuses on hobbies and interests**
- **Involves activities that bring enjoyment and relaxation**

10 – MY ENVIRONMENT (X)

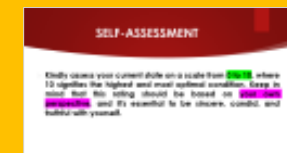
- * Focuses on physical surroundings and living conditions
- * Involves home, neighborhood, and community

11 – MY CONTRIBUTION TO SOCIETY (X)

- * Focuses on giving back to the community
- * Involves volunteer work, charitable activities, and community involvement

12 – MY LIFE VISION (X)

- * Focuses on long-term goals and aspirations
- * Involves envisioning the future and the legacy one wants to leave behind



SELF-ASSESSMENT

- ▶ Kindly assess your current state on a scale from 0 to 10, where 10 signifies the highest and most optimal condition. Keep in mind that this rating should be based on your own perspective, and it's essential to be sincere, candid, and truthful with yourself.

ON PAGE ONE
OF WORKBOOK
2, WRITE:
12
DIMENSIONS
(WRITE
TODAY'S
DATE)

SELECT A SELF-ASSESSMENT NUMBER

- ▶ 0 = Worst possible current situation with regards to career
- ▶ 10 = Highest levels of career development and satisfaction. There is nothing further to accomplish...
- ▶ Please select a number that is the most accurate self-assessment as of right now. You can give 5, 5.5, 5.25 etc.
- ▶ This is YOUR OWN assessment

PSYCHOLOGICAL TIME AND ENERGY ALLOCATION

Mindful management of psychological time allows for a balanced approach to energy expenditure, preventing burnout by allocating time for both productive tasks and restorative breaks, thereby maintaining long-term personal and professional health.



PRINCIPLE # 26 – AWARENESS OF THE MOVEMENT OF PLEASURE & PAIN IN ONE'S MIND (PEAKS AND VALLEYS)

- ▶ Principle #26 emphasizes the importance of being conscious of the fluctuating experiences of pleasure and pain within one's mind, recognizing their transient nature. This awareness helps in maintaining emotional balance, preventing overreaction to highs and lows. By observing these peaks and valleys, one can develop a deeper understanding of their inner experiences and cultivate a more stable and resilient mindset.

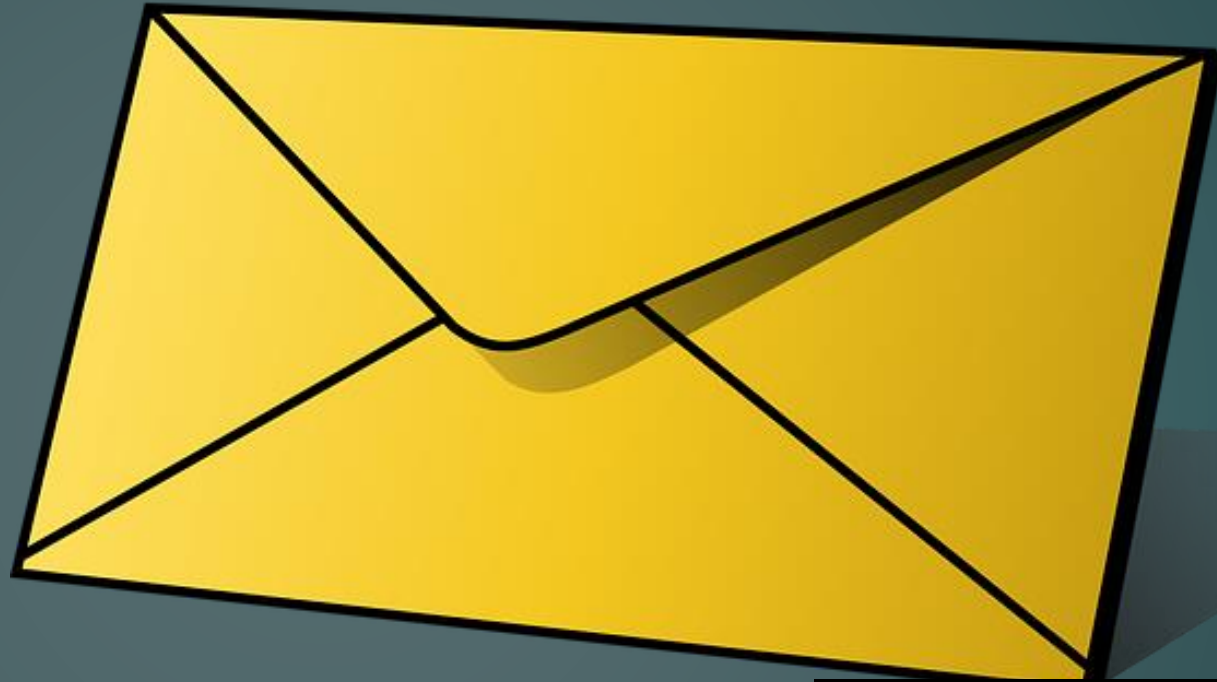


CENTRAL CONCEPT OF PERSONAL TRANSFORMATION WEEK 25 HOMEWORK: 3X5 CARD – READ ONCE DAILY

The human mind, with its intricate workings and endless complexities, is a fascinating phenomenon that requires a substantial amount of energy to function. However, this energy can be drained by personal conflicts that arise both within and outside of ourselves. When we take steps to reduce and eventually eliminate the unnecessary dissipation of our inner energy, we can experience an extraordinary revitalization and conservation of our life force. This revitalized energy can then permeate every aspect (12 dimensions) of our lives, unobstructed and without disturbance, leading to a powerful foundation upon which limitless possibilities become available and realizable.

– *The Angel Wing, LLC*

**PUT MONEY IN
THE ENVELOP
(VITAMIN M)**



[This Photo](#) by Unknown Author is licensed under [CC BY-NC](#)



USE 10% OF YOUR SAVED MONEY

- ▶ Allocate 10% of your savings this week to a meaningful cause or investment, ensuring that every cent is utilized judiciously and responsibly, without any misuse or abuse.

HOMEWORK EXERCISE



Please write 3 paragraphs
on:



What is the BEST use of
my time, this week?

NEVER GIVE UP

