

Continuous Vertical Lift

Our continuous 4-strand chain lift boasts quality heavy duty components in a modular pre-engineered design for years of service.

Available in six different models, the Continuous Vertical Lift handles packages up to 5,000 lbs.

This unit comes completely pre-wired, or with quick connect features, for easy on-site assembly. Lift height will dictate the exact electrical configuration.

Each unit is enclosed with painted expanded metal, in the color your choice, and includes access doors at lower elevations for easy maintenance.

Loading and unloading is available in only a "Z" pattern.

Our standard control panel includes Allen Bradley components including a PanelView HMI and CompactLogix Controller, but can be customized to your specifications.

Lift Models and Capacity

Model 50	up to 100#
Model 60	up to 200#
Model 80	up to 600#
Model 100	up to 1200#
Model 120	up to 3000#
Model 160	up to 5000#

- Infeed conveyor, powered by a separate brake motor, is typically included.
- Each unit is completely customizable to the needs of the customer.
- All electric for increased reliability.
- Indicator lights on top of control panel to check unit status from a distance.

[See the lift in action](#)



Opened in 2008 and located in Walton, Kentucky, Tri-Fab Automation is a family owned business with extensive experience in the material handling industry. Let us help make your project a success.

Check out everything Tri-Fab has to offer at www.TriFabAutomation.com

Other Products

- Pallet Stacker, Pallet Dispenser with or without Slip Sheet Placer
- Indexing Autostore Lift, Reciprocating Lift
- Chutes, Catwalks, Crossovers, Safety Barriers
- Photo Eye Protection
- Header/Hanger Steel
- Custom Fabrication

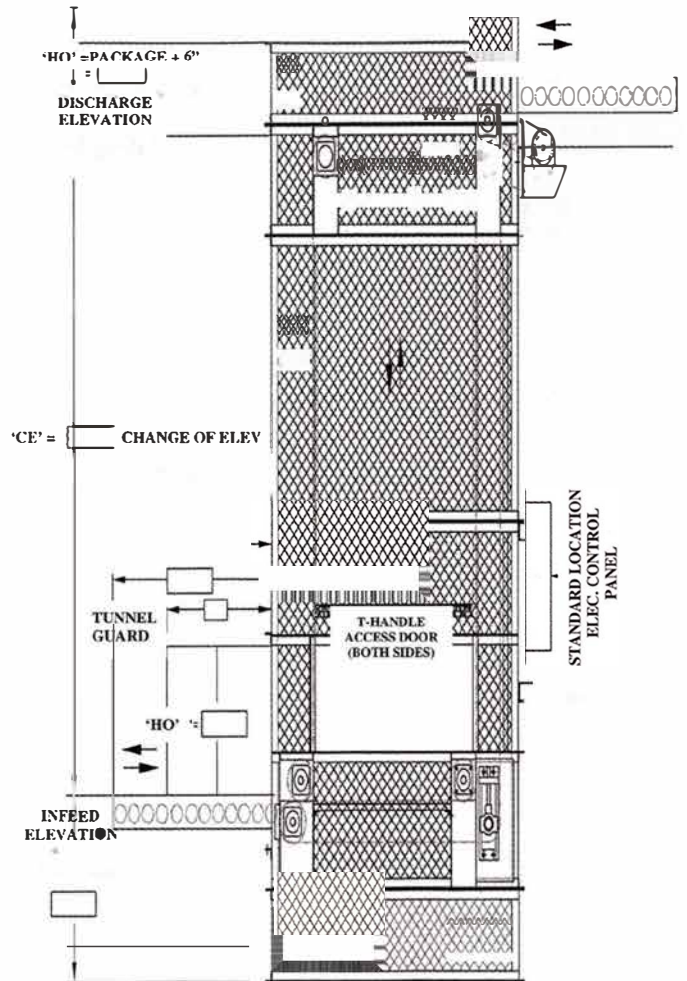
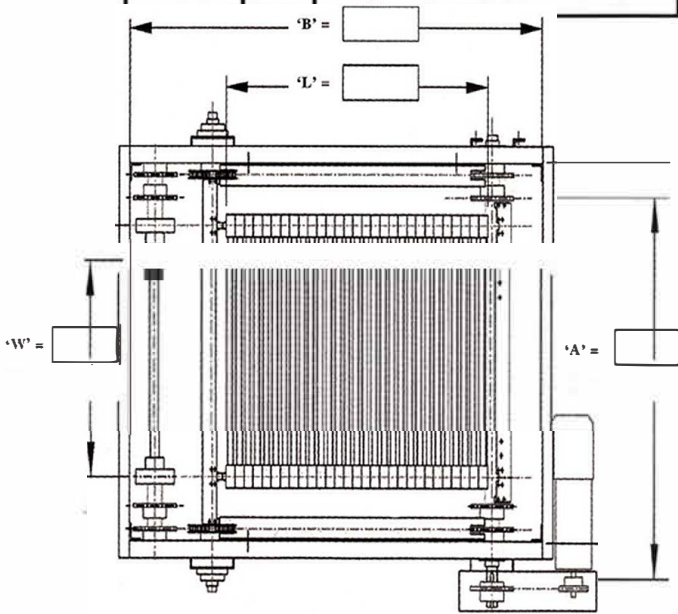
Tri-Fab supplies spare parts for Tri-Fab lifts as well as various other manufacturers' lifts.



12020 Chandler Drive, Walton, KY 41094
 859-781-0450 Info@tri-Fab.com
 Office hours are 7:00am to 3:30pm Monday through Friday

CAPACITY & PLATFORM DIMENSIONS

MODEL NO.	LBS CAP	DIM "L" PLATFORM LENGTH	"L" MAX	DIM "W" PLATFORM WIDTH	"W" MAX	MINIMUM ELEVATION
50-100	100	21 1/4"+2 1/2" INCREMENTS	41 1/4"	12" + 1" INCREMENTS	36"	14"
60-200	200	25 1/2"+3" INCREMENTS	49 1/2"	16" + 1" INCREMENTS	48"	16"
80-600	600	30"+4" INCREMENTS	62	16" + 1" INCREMENTS	52"	20"
100-1200	1200	30 1/2"+5" INCREMENTS	72 1/2"	24" + 1" INCREMENTS	64"	24"
120-3000	3000	33"+6" INCREMENTS	75"	30" + 1" INCREMENTS	72"	28"
160-5000	5000	36"+8" INCREMENTS	84"	36" + 1" INCREMENTS	84"	32"



BASE & SHAFT DIMENSIONS

MODEL NO.	"A" BASE WIDTH	"B" BASE LENGTH
50-100	DIM "W" + 13"	DIM "B" + 22 1/2"
60-200	DIM "W" + 16"	DIM "B" + 26 1/4"
80-600	DIM "W" + 20"	DIM "B" + 40"
100-1200	DIM "W" + 24 1/2"	DIM "B" + 43 1/2"
120-3000	DIM "W" + 28"	DIM "B" + 48"
160-5000	DIM "W" + 42"	DIM "B" + 69"

Products

- **Vertical lifts**
 - [Continuous](#) 4 strand chain lifts
 - [Indexing](#) 4 strand chain lifts
 - [Reciprocating](#) Vertical Conveyors (VRC's) All models available with conveyors or flat decks.
 - Material Lifts
 - Freight lifts
 - Dumbwaiters
- **[Pallet dispensers w/slip sheet placer](#)**
 - Wood pallets
 - Adjustable models are available
 - Plastic pallets
 - Adjustable models are available
- **Slip Sheet dispensers**
 - Place cardboard sheets onto pallets and palletized product for support.
- **[Pallet stackers/dispensers](#)**
 - Wood pallets
 - Adjustable models are available
 - Plastic pallets
 - Adjustable models are available
- **Full pallet stackers**
 - Palletized pallets – Stack Full pallet on top of another full pallet.
- **T-Cars (Transfer Cars)**
- **Full pallet unstackers**
 - Palletized pallets – Unstack Full pallet from on top of another full pallet.
- **Tote stackers**
 - Plastic nested totes
 - Wire baskets
- **Tote dispensers**
 - Plastic nested totes
 - Wire baskets
- **Custom conveyor**
 - CDLR
 - MDR
 - Belt
 - Cogged belt
 - Plastic Chain
 - Powered Chain
 - Extruded aluminum conveyors
 - Turntables
- **Palletizing**
 - Robotic
 - Gantry Cranes
- **Product rotators**
 - Conveyor feed through type
- **Chutes**
 - [Straight](#) or [curved](#)
- **Custom Fabrication**
 - [Stairs](#)
 - [Catwalks](#)
 - [Crossovers](#)
 - [Safety Barriers](#)
 - [Photo Eye Protection](#)