

# Tri-Fab Automation

The leading manufacturer of superior quality equipment for the material handling industry.

## CONTINUOUS VERTICAL LIFT

### GENERAL INFORMATION

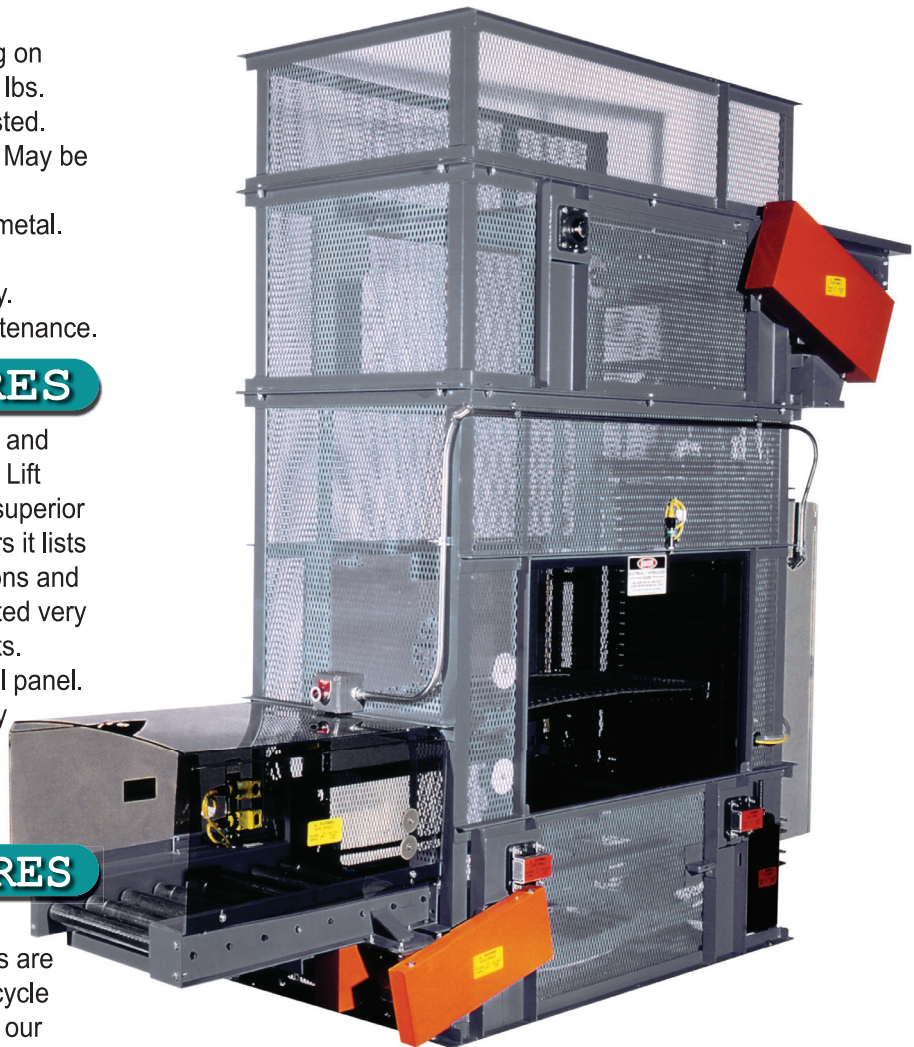
- Continuous 4 strand chain lift. Modular pre-engineered design. Built of only heavy duty quality components for years of reliable service.
- Available in 6 different models depending on your package size and weight, up to 5,000 lbs.
- Unit comes completely pre-wired and tested. (Depending on height and shipping sizes). May be shipped in multiple pieces.
- Totally enclosed with painted expanded metal.
- Very quiet operation. Under 80 db's.
- Loading and unloading in "Z" pattern only.
- Access doors at lower elevation for maintenance.

### CONTROL FEATURES

- Control panel includes a 6" touch screen and PLC to control the operation of the Vertical Lift auto and manual functions. This provides superior control of the equipment and if a jam occurs it lists the exact reason for the jam. Custom buttons and other information can be added and collected very easily depending on customer requirements.
- Multi color indicator light on top of control panel. Green for ready, yellow for unit idle (energy management) and red for jam condition.
- All electric, no air required.
- 24VDC controls for safety.

### MECHANICAL FEATURES

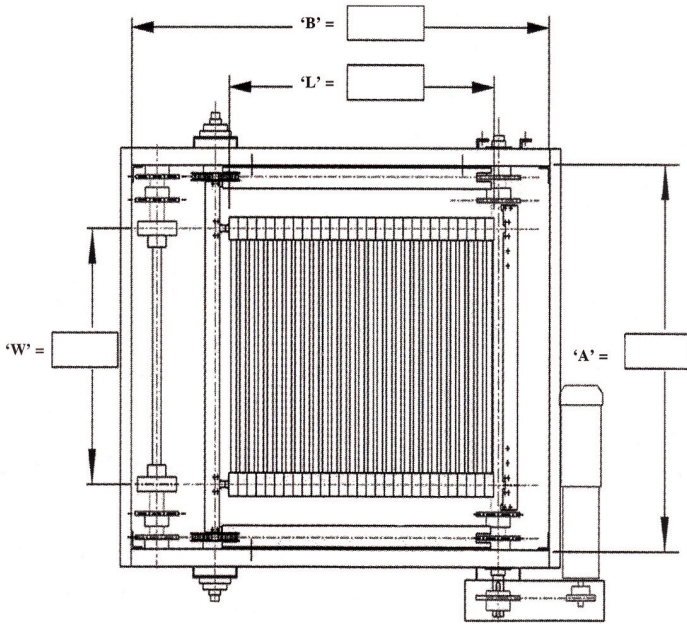
- Infeed conveyor is included for accurate package infeed timing. All infeed conveyors are powered with a separate heavy duty high cycle brake motor. Tunnel guard is included with our conveyor for low infeed elevations.
- Bearings for the lift are Dodge. 18 total.
- Lifting chains are premium quality for long life and minimal stretch.
- Lift sprockets (18) have specially machined and hardened teeth for long life.



# CONTINUOUS VERTICAL LIFT

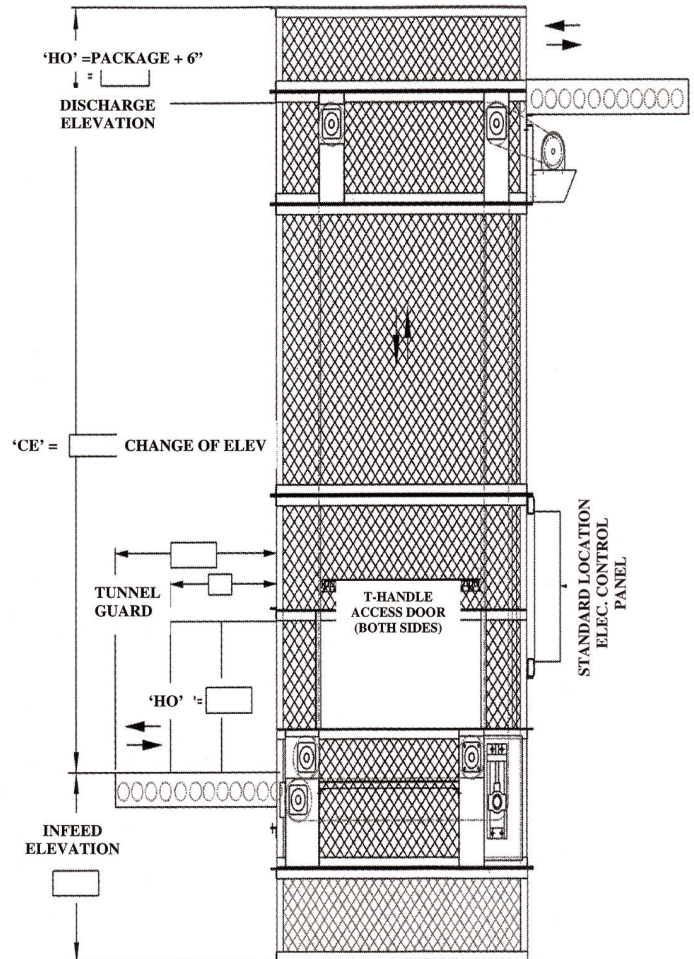
## CAPACITY & PLATFORM DIMENSIONS

MODEL NO.	LBS CAP	DIM "L" PLATFORM LENGTH	"L" MAX	DIM "W" PLATFORM WIDTH	"W" MAX	MINIMUM ELEVATION
50-100	100	21 1/4"+2 1/2" INCREMENTS	41 1/4"	12" + 1" INCREMENTS	36"	14"
60-200	200	25 1/2"+3" INCREMENTS	49 1/2"	16" + 1" INCREMENTS	48"	16"
80-600	600	30"+4" INCREMENTS	62"	16" + 1" INCREMENTS	52"	20"
100-1200	1200	30 1/2"+5" INCREMENTS	72 1/2"	24" + 1" INCREMENTS	64"	24"
120-3000	3000	33"+6" INCREMENTS	75"	30" + 1" INCREMENTS	72"	28"
160-5000	5000	36"+8" INCREMENTS	84"	36" + 1" INCREMENTS	84"	32"



## BASE & SHAFT DIMENSIONS

MODEL NO.	"A" BASE WIDTH	"B" BASE LENGTH
50-100	DIM "W" + 13"	DIM "B" + 22 1/2"
60-200	DIM "W" + 16"	DIM "B" + 26 1/4"
80-600	DIM "W" + 20"	DIM "B" + 40"
100-1200	DIM "W" + 24 1/2"	DIM "B" + 43 1/2"
120-3000	DIM "W" + 28"	DIM "B" + 48"
160-5000	DIM "W" + 42"	DIM "B" + 69"



The leading manufacturer of superior quality equipment for the material handling industry.