

Pallet Management

Our Pallet Stackers and Dispensers accept stacks of pallets, loaded manually or automatically, and can dispense pallets in stacks or one at a time.

Pallets can be wood, plastic, or metal.

Available in right-hand, left-hand or in-line configurations.

This unit comes completely pre-wired and tested with your pallets.

Each unit is painted to your color choice.

Our standard control panel includes Allen Bradley components including a PanelView HMI and CompactLogix Controller, but can be customized to your specifications.

The automatic slip sheet placer can be added to your dispenser, or ordered as a stand alone unit.

Details

Discharge and in-feed conveyor are included and can be 20" to 60" in length, based on your needs.

Utilizes 80# chain and a heavy duty hydraulic lift table.

Pallet magazine uses 11 gauge sheet metal
Standard magazine is 96" high holding eighteen 5" pallets.

- Available in a manually adjustable model for different pallet sizes.
- Each unit is completely customizable to the needs of the customer.
- All electric for increased reliability.
- Indicator lights on top of control panel to check unit status from a distance.

[See the dispenser in action](#)



Opened in 2008 and located in Walton, Kentucky, Tri-Fab Automation is a family owned business with extensive experience in the material handling industry. Let us help make your project a success.

Check out everything Tri-Fab has to offer at www.TriFabAutomation.com

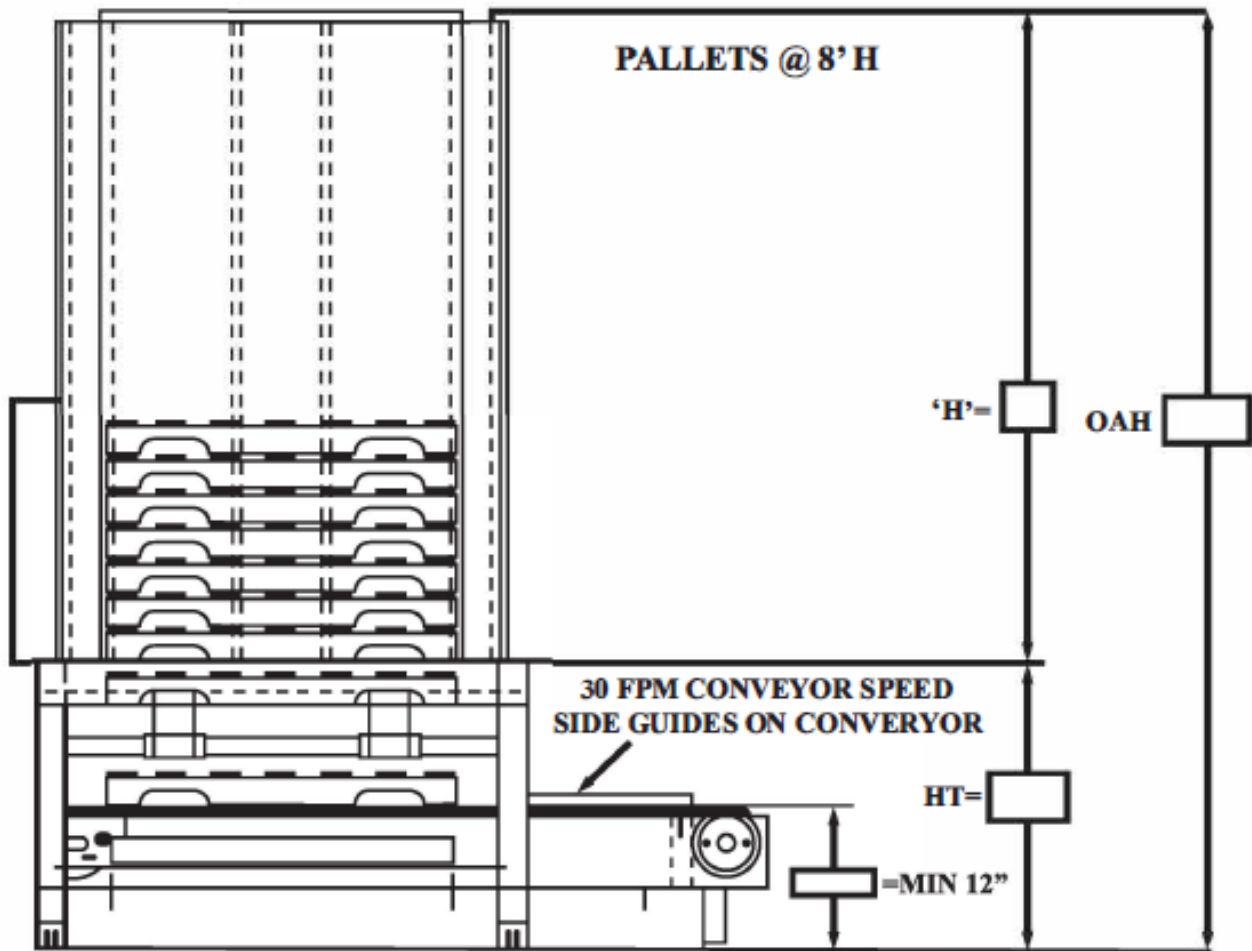
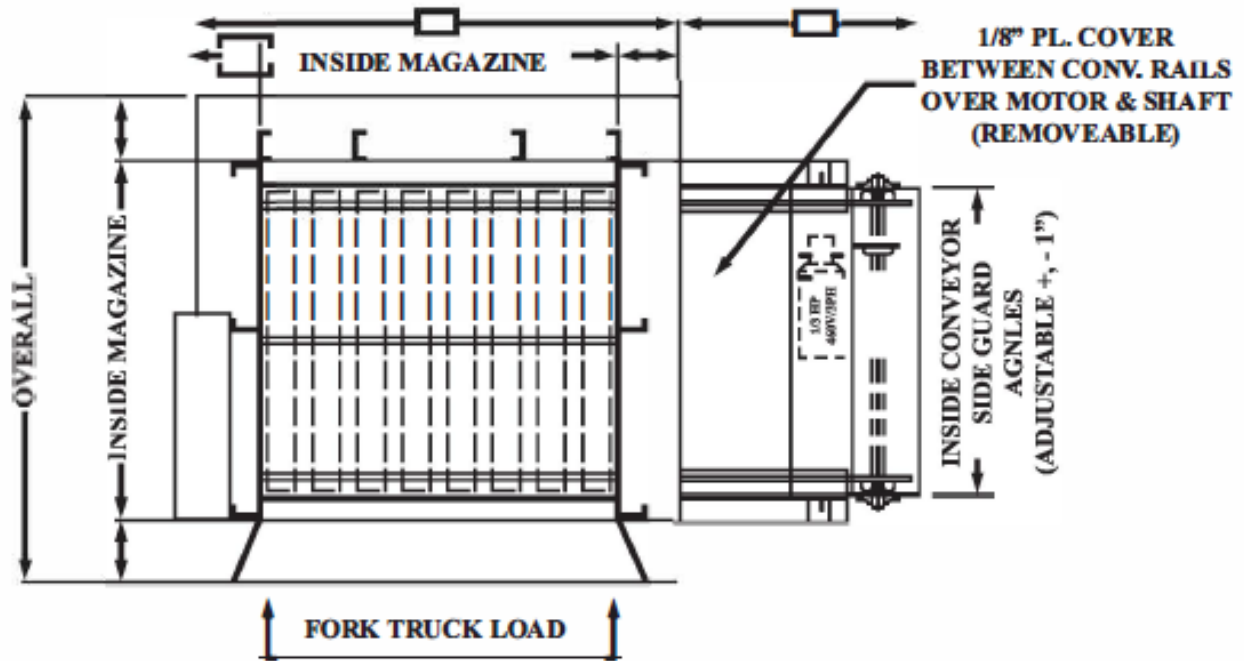
Other Products

Pallet Stacker, Pallet Dispenser with or without Slip Sheet Placer
Indexing Autostore Lift, Reciprocating Lift
Chutes, Catwalks, Crossovers, Safety Barriers
Photo Eye Protection
Header/Hanger Steel
Custom Fabrication

Tri-Fab supplies spare parts for Tri-Fab lifts as well as various other manufacturers' lifts.



12020 Chandler Drive, Walton, KY 41094
859-781-0450 Info@tri-Fab.com
Office hours are 7:00am to 3:30pm Monday through Friday



Products

- **Vertical lifts**
 - [Continuous](#) 4 strand chain lifts
 - [Indexing](#) 4 strand chain lifts
 - [Reciprocating](#) Vertical Conveyors (VRC's) All models available with conveyors or flat decks.
 - Material Lifts
 - Freight lifts
 - Dumbwaiters
- **[Pallet dispensers w/slip sheet placer](#)**
 - Wood pallets
 - Adjustable models are available
 - Plastic pallets
 - Adjustable models are available
- **Slip Sheet dispensers**
 - Place cardboard sheets onto pallets and palletized product for support.
- **[Pallet stackers/dispensers](#)**
 - Wood pallets
 - Adjustable models are available
 - Plastic pallets
 - Adjustable models are available
- **Full pallet stackers**
 - Palletized pallets – Stack Full pallet on top of another full pallet.
- **T-Cars (Transfer Cars)**
- **Full pallet unstackers**
 - Palletized pallets – Unstack Full pallet from on top of another full pallet.
- **Tote stackers**
 - Plastic nested totes
 - Wire baskets
- **Tote dispensers**
 - Plastic nested totes
 - Wire baskets
- **Custom conveyor**
 - CDLR
 - MDR
 - Belt
 - Cogged belt
 - Plastic Chain
 - Powered Chain
 - Extruded aluminum conveyors
 - Turntables
- **Palletizing**
 - Robotic
 - Gantry Cranes
- **Product rotators**
 - Conveyor feed through type
- **Chutes**
 - [Straight](#) or [curved](#)
- **Custom Fabrication**
 - [Stairs](#)
 - [Catwalks](#)
 - [Crossovers](#)
 - [Safety Barriers](#)
 - [Photo Eye Protection](#)