

Baby Rest FL Corner Mounting Kit Installation Manual

For Corner Installation Use

To be used with: **Baby Rest Slim FL Model BK-06FL**
Baby Rest Fit FL Model BK-07

In order to safely install the Baby Rest FL type, please make sure to read this manual and follow the instructions accordingly. This guide explains how to install Baby Rest Fit FL or Baby Rest Slim FL at corner. To install the Baby Rest WA type to a plain wall, please refer to the Installation Manual supplied with the Baby Rest WA type.

Safety Warnings

Safety precautions noted here are divided into "warnings" and "cautions" according to the urgency and seriousness of the harm and damage that may occur. Please read this instruction manual carefully before use, and observe the safety precautions.

⚠ WARNINGS	If this label is ignored or mishandled, there is risk of serious injury or death.
⚠ CAUTIONS	If this label is ignored or mishandled, there is risk of injury or property damage.

⚠ WARNINGS	
<ul style="list-style-type: none"> Fix the Baby Rest to both the floor and the wall. The Baby Rest may collapse if attached only to a floor. Select the anchor bolts that can be firmly secured into concrete, to a depth of at least 40mm. This product may fall if the anchor bolts are connected to a mortar surface. <p>How to Mount onto a Floor</p> <div style="display: flex; justify-content: space-around;"> <div style="text-align: center;"> <p>Incorrect</p> </div> <div style="text-align: center;"> <p>Correct</p> </div> </div>	<ul style="list-style-type: none"> Apply foundational reinforcement if the wall surface is other than concrete. *Make sure that each mounting point can withstand a strength of 200 N (20 kgf or more). Failure to do so may result in fall. When mounting to drywall with self-tapping screws, reinforce the mounting points with light gauge steel (studs or cross-braces), or reinforcement plywood along with the screws. Failure to do so may result in fall. When mounting to a partition with self-tapping screws, insert snug-fitting wood reinforcement of at least 30 mm at the mounting points. Failure to do so may result in fall. <p>How to Mount onto a Wall</p>

Types of Screws used for Wall-mounting

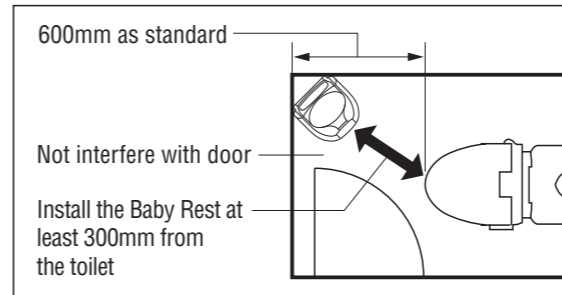
(For concrete floor only / 3 x M10 anchor bolt is required)
 ① to ③ indicate the types of wall surface below.

*Only self-tapping screws and washers are supplied with the product. Parts other than the supplied need to be prepared before hand.

<p>① Partition/Plasterboard Installation</p> <ul style="list-style-type: none"> Self-tapping screws φ5 washers (supplied with Baby Rest FL) φ5x35 self-tapping screws (supplied with Baby Rest FL) <p>Partition Reinforcement Place a piece of wooden reinforcement at least 30mm in thickness inside the wall *Note that installing reinforcement wood is extremely important.</p> <p>Plasterboard Reinforcement Reinforce plasterboard with a light-weight steel frame, t12 plywood, or t2.3 iron plate.</p>	<p>② Concrete/ALC Installation</p> <ul style="list-style-type: none"> Female screw anchor bolts *Use ALC-specific anchors for ALC installation <p>Use M6, M8, or M10 types</p> <div style="border: 1px solid black; padding: 5px; margin-top: 10px;"> <p>⚠ CAUTION Do not use male screw anchor bolts, as it may not be possible to attach the head pad.</p> </div>	<p>③ Hollow Block Installation</p> <ul style="list-style-type: none"> Toggle bolts
--	--	---

*The Combi Group follow environmental friendly business practice based on ISO 14000 Certification Guidelines. Please dispose of your Baby Rest FL using proper waste management methods.

Reference Example of Mounting Location



- Install on a wall at least 600mm away from the toilet, or insure 300mm of space between the Baby Rest FL and toilet.

⚠ WARNING	⚠ CAUTION
If installing the Baby Rest FL in a private restroom, install the Baby Rest FL in a location where the child can be seen by the adult using the restroom at all times.	The Baby Rest FL should be installed clearly from door space. Otherwise it may cause damage.

Routine Safety Inspection

⚠ WARNING	Conduct the daily and annual safety inspections described below in order to safely use this product. Injury or serious accident could occur if safety inspections are not performed.	⚠ CAUTION
If a problem is found during the inspection, immediately stop using it, and contact your dealer or the service center below for assistance.		

The daily or weekly inspection is a check using both eyes and hands. No tools are necessary.

<p>Baby Rest Slim FL</p> <ol style="list-style-type: none"> Physical Inspection <ol style="list-style-type: none"> Check for loose parts Make sure the base does not wobble or shake, and that the guard is firmly in place Check for scratches or broken parts Checking the Guard's Function <ol style="list-style-type: none"> Insure that the guard is firmly in place, does not wobble or shake, and moves from left to right. After testing the opening and closing function of the guard several times, insure that neither the base nor the guard wobbles or shakes. Sticker Check <p>Stickers should be firmly adhered and legible. Check for scratches, rips, missing stickers, or fadedness.</p> Head and Seat Pad Check <p>Check for scratches and broken parts. Make sure the head and seat pads do not wobble or shake.</p> 	<p>Baby Rest FL</p> <ol style="list-style-type: none"> Physical Inspection <ol style="list-style-type: none"> Check for loose parts Make sure the base does not wobble or shake, and that the guard is firmly in place Check for scratches or broken parts Sticker Check <p>Stickers should be firmly adhered and legible. Check for scratches, rips, missing stickers, or fadedness.</p> Head and Seat Pad Check <p>Check for scratches and broken parts. Make sure the head and seat pads do not wobble or shake.</p>
--	--

For more information regarding the maintenance inspection (additional cost) and repair parts (sold separately).

- Main maintenance parts include pads and decals.
- Product durable period is 7 years. Repair Parts available with in 5 years after end of production.

Technical Specifications

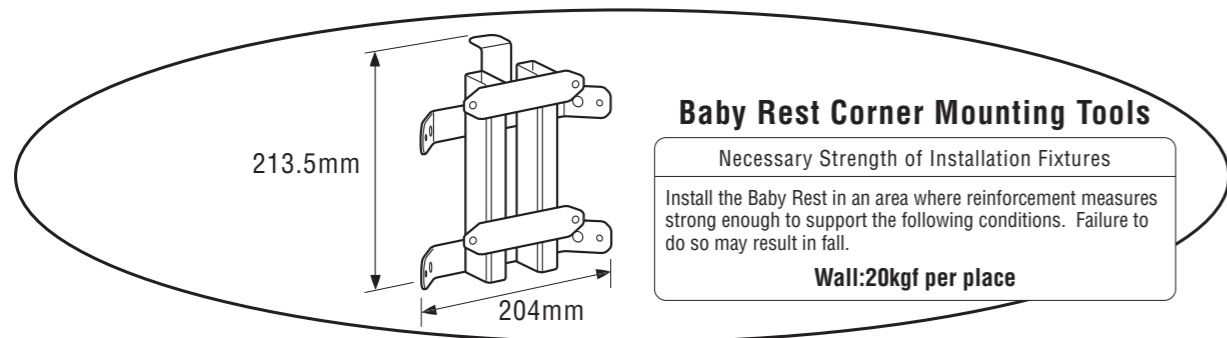
Product Number	BC-02FL	Weight	0.9kg
Product Name	Corner Mounting Kit	Materials	• BBase/Steel (Rust-proof) • Corner Cover/ABS Resin
Dimension	W205×D65×H213.5mm		

*Be advised that technical specifications for this product may change without notice for reasons such as improvement in design.

*For information on products, contact the distribution agency.

Manufacturer **Combi Corporation**
 2-6-7, Motoasakusa, Taito-ku, Tokyo 111-0041 Japan

Distributor **CombiWith Corporation**
 Head Office/2-6-7, Motoasakusa, Taito-ku, Tokyo 111-0041 Japan
 TEL : 81-3-5828-7631 FAX : 81-3-5828-7630
 www.combiwith.co.jp/



Corner Mounting Kit Hardware and Accessories

- | | | | | | |
|---------------------------|--|--|------------------------------|---------------------------------|-------------------------------------|
| 1 M6 Screws, 4
 | 2 $\phi 6$ Flat washers, 2 big (diameter $\phi 20$), 2 small (diameter $\phi 12$)
 | 3 $\phi 4$ Self-tapping screws, 2
 | 4 Corner cover, 1
 | 5 Braille sticker, 1
 | 6 Installation Manual, 3
 |
|---------------------------|--|--|------------------------------|---------------------------------|-------------------------------------|

Corner Installation Instructions

* Illustrated below is the Baby Rest Slim FL. Follow the same instructions to install the Baby Rest Fit FL.
 * Hole positions are all center pitch (center-to-center) dimensions.

1 Temporarily connect the four points between the corner fixtures and the Baby Rest.

Parts are included **2**

Parts are included **1**

Parts are included **2**

2 Temporarily place the connected corner fixtures and base in the corner against the wall, and mark the installation points on the wall.

Mark installation points

3 Fix the corner fixtures to the wall at four mounting points.

Small holes, 135mm
Large holes, 115mm

*Refer to "Types of Screws Used for Wall-mounting" on the other side of this instructions. Illustration below shows the Baby Rest. Use of washers and self-tapping screws supplied with **2 3**

130mm

940mm

Large holes

Small holes

Included **2 3**
 $\phi 5$ Self-tapping screws and Washers

*Once the screws are in place, make sure the structure does not shake or wobble.

4 After temporarily placing the base onto the corner fixture, remove the lower panel and mark the underside of the base.

Lower panel

Mark 3 installation points

5 Temporarily remove the base, and install 3 anchor bolts in the marked areas.

3 x M10 anchor bolts.
*Anchor bolts must be placed at least 40mm into the base

Do not use the central hole

CAUTION

If there is decoration lower panel at wall and when mounting to a wall, affix the entire upper portion with plywood. If the Baby Rest Slim FL is not properly installed, damage may occur.

Holes as seen from above

6 Install the corner cover from the backside.

Part is included **4**

Parts are included **3**

7 Return the base to its original location as indicated above, and fix the Baby Rest FL to the floor at three mounting points.

Base

Nuts
M6 Spring washers
Washers

anchor bolts

$\phi 10$ Washers, 1-3 (supplied with Baby Rest)

Side View

Do not leave empty space on the wall

In order to stabilize the base, take the slope of the floor into account and use the washers accordingly.

8 Once the corner fixture is mounted onto the wall, connect the base.

Parts are included **2**

Parts are included **1**

Parts are included **2**

9 Attach the head pad. (Make sure the correct side is up.)

Head pad (supplied with Baby Rest)

Back side

Square holes

*The up arrow on the back indicates which side is up. Match the 6 tabs with the corresponding square holes on the backside to attach the head pad.

CAUTION

The head pad tabs will make a clicking sound when correctly attached. Note that the tabs may break if forcibly inserted.

Screws, 2

Screw caps, 2 (supplied with Baby Rest)

10 The stickers other than Corner sticker are come with the product.

Guide stickers, 2

Usage instructions stickers

Corner sticker

Baile sticker

Routine inspection sticker

Rest room entrance

Rest room stall

WARNING

- Stickers must be placed in highly visible areas. Dangerous actions such as indicated on the usage instructions sticker may lead to injury or serious accidents.
- Thoroughly check the Baby Rest FL once it has been installed. Refer to the Users Manual "Maintenance Inspection" section. Using the Baby Rest FL without completely assembling it can lead to injury or serious accidents.