

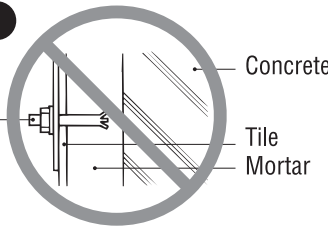
Baby Rest Slim WA Installation Manual (to a flat surface)

In order to safely install the Baby Rest Slim WA to a flat surface, please make sure you read this manual and follow the instructions accordingly. This guide explains how to attach the Baby Rest Slim WA to a wall. To attach the Baby Rest Slim WA in a corner, please refer to the Installation Manual supplied with the Corner Mounting Kit, sold separately.

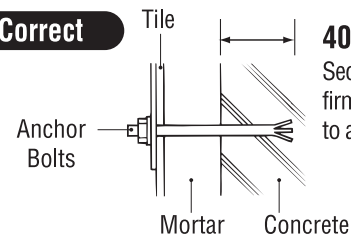
WARNING

- Make sure that installation hardware such as anchor bolts are firmly placed into the wall. (Failure to do so may result in fall.)
- If mounting onto a concrete wall, the tip of the anchor bolts must be embedded at least 40mm into the wall. Failure to do so may result in fall.

Incorrect



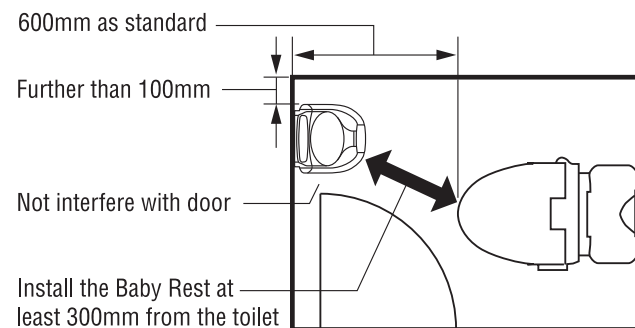
Correct



40 mm or greater
Secure the anchor bolts firmly into concrete, to a depth of at least 40mm.

- Apply foundational reinforcement if the wall surface is other than concrete.
- *Make sure that each mounting point can withstand a strength of 1,000 N (100 kgf or more)[fix 8 mounting points]. Failure to do so may result in fall.

Reference Example of Mounting Location



- Install on a wall at least 600mm away from the toilet, or insure 300mm of space between the Baby Rest Slim WA and toilet.

WARNING

If installing the Baby Rest Slim WA in a private restroom, install the Baby Rest Slim WA in a location where the child can be seen by the adult using the restroom at all times.

CAUTION

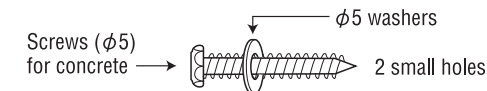
The Baby Rest Slim WA should be installed clearly from door space. Otherwise it may cause damage.

Types of Screws used for Wall-mounting

Concrete/ALC Installation

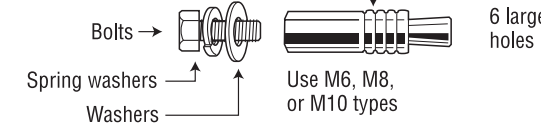
Please prepare the following before installation:

• Screws for use on concrete



• Female screw anchor bolts

*Use ALC-specific anchors for ALC installation



CAUTION

Do not use male screw anchor bolts, as it may not be possible to attach the head pad.

Parts Included

1 Screw caps, 2



2 Head pad, 1



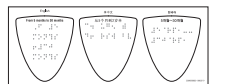
3 Usage instructions sticker, 1



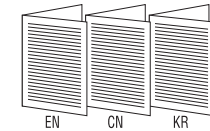
4 Guide stickers, 2



5 Braille sticker, 1



6 Users Manual, 3
Installation Manual, 3



See back for mounting instructions.

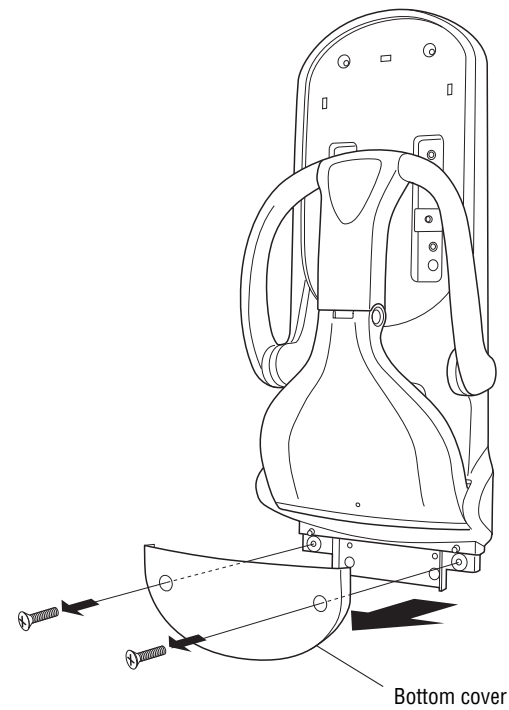
*For information on products, contact the distribution agency.

Manufacturer **Combi Corporation**
2-6-7, Motoasakusa, Taito-ku, Tokyo 111-0041 Japan

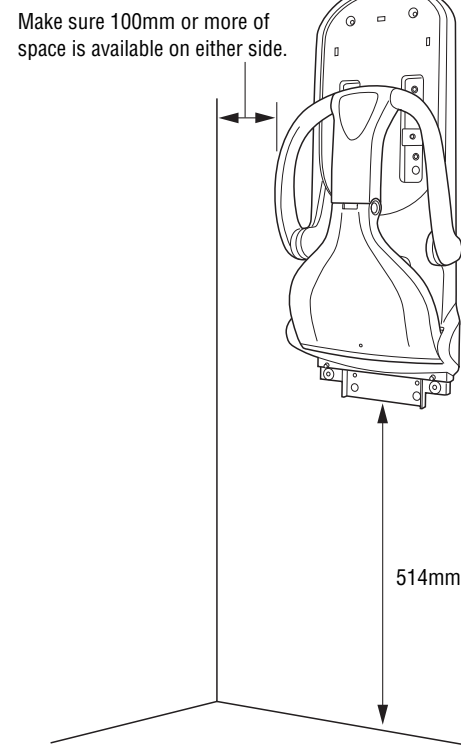
Distributor **CombiWith Corporation**
Head Office/2-6-7, Motoasakusa,
Taito-ku, Tokyo 111-0041 Japan
TEL : 81-3-5828-7631 FAX : 81-3-5828-7630
www.combiwith.co.jp/

Installation Instructions * Hole positions are all center pitch (center-to-center) dimensions.

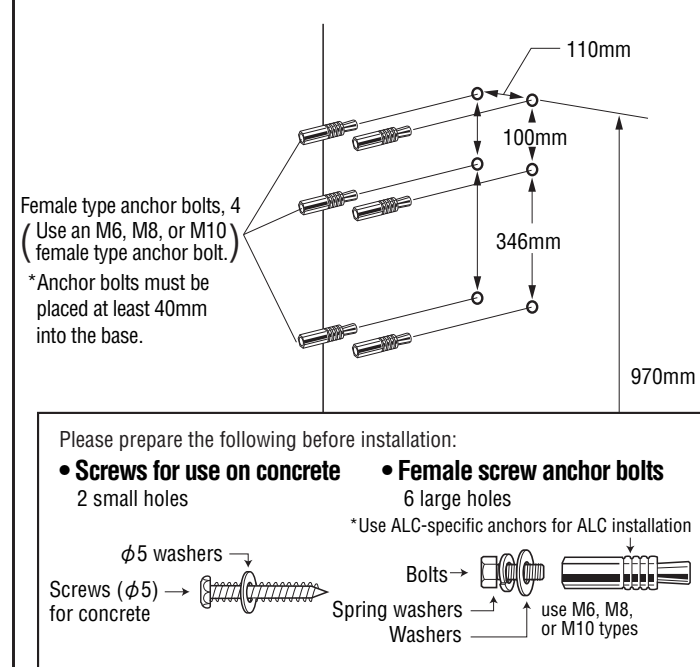
1 Remove the two screws from the bottom cover of the base.



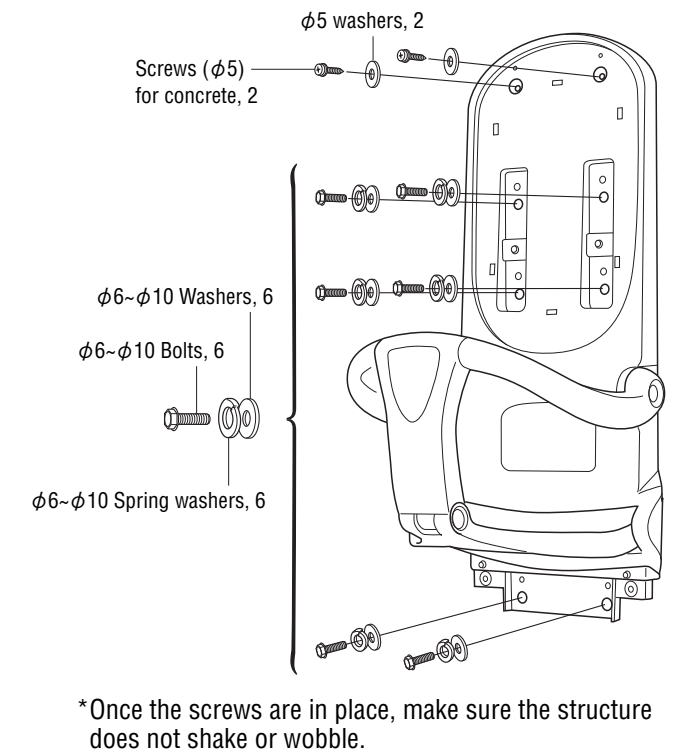
2 Confirm points of installation



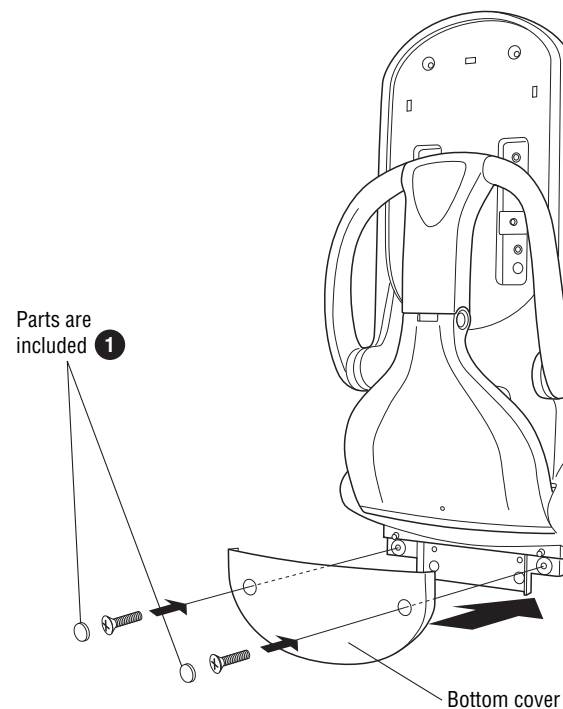
3 Screw in female type anchor bolts.



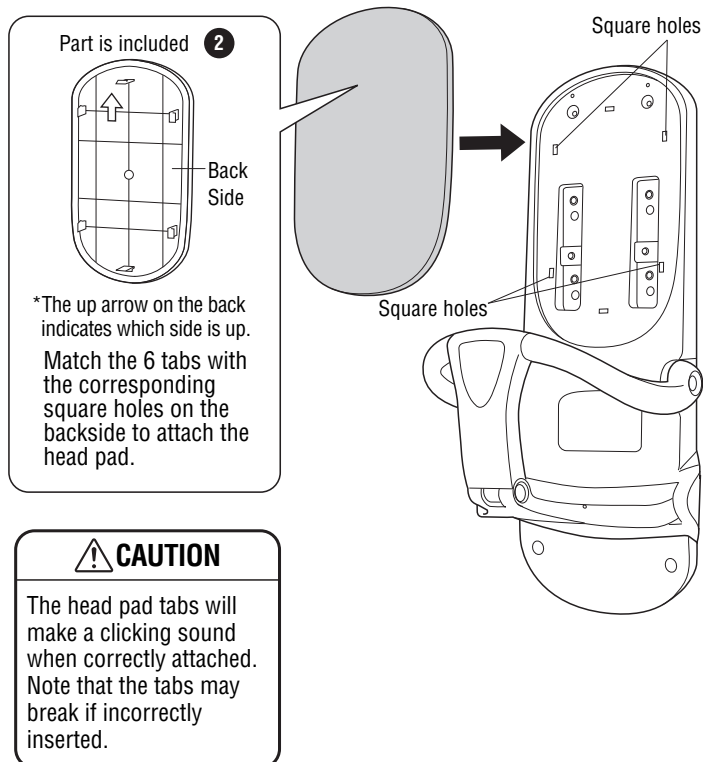
4 Fix the Baby Rest Slim WA to the wall at four mounting points.
(Refer to "Types of Screws Used for Wall-mounting" on the other side of this instructions)



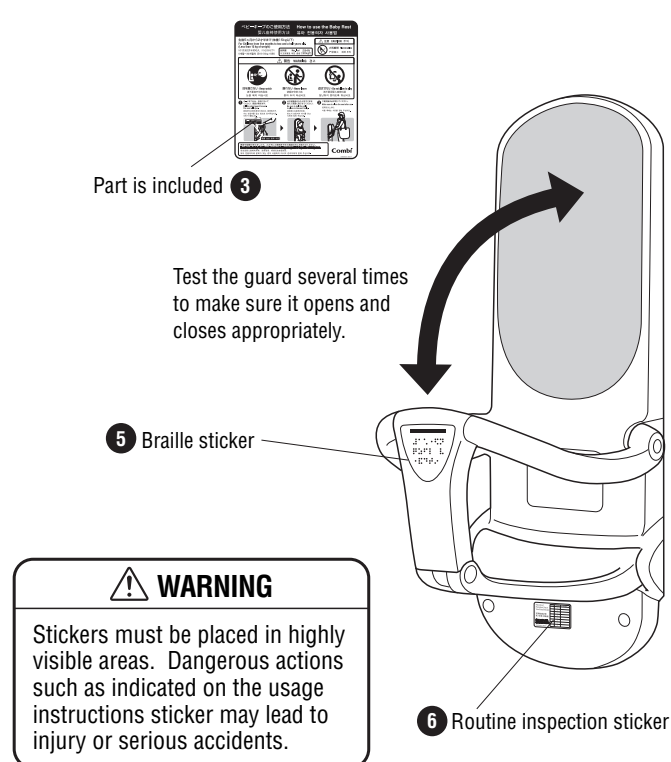
5 Place the bottom cover on the base.



6 Attach the head pad.
(Make sure the correct side is up.)



7 Put ③ stick near the product
Put ⑤ & ⑥ stickers on the product.



8 Affix the guide stickers to the rest room entrance and to the stall doors.

