





# Combi Diaper Changing Station MS: BS-F52WH Users Manual

Please read this users manual carefully and use accordingly.  
Please keep this manual for future reference.

## Safety Warnings

Safety precautions noted here are divided into "warnings" and "cautions" according to the urgency and seriousness of the harm and damage that may occur. Please read this instruction manual carefully before use, and observe the safety precautions.

 <b>WARNINGS</b>	If this label is ignored or mishandled, there is risk of serious injury or death.
 <b>CAUTIONS</b>	If this label is ignored or mishandled, there is risk of injury or property damage.
 These illustrations demonstrate what should not be done with the Diaper Changing Station.	 These illustrations demonstrate the correct way to use the Diaper Changing Station.

## Proper Usage



**Caution, drop !**



**Never leave**



**Keep watch**



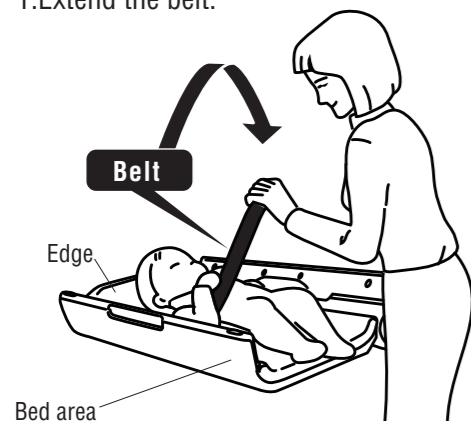
**Do not allow to stand**

 <b>WARNINGS</b>	The belt is for preventing child from slipping sideways and NOT for fall prevention.
-----------------------------------------------------------------------------------------------------	--------------------------------------------------------------------------------------

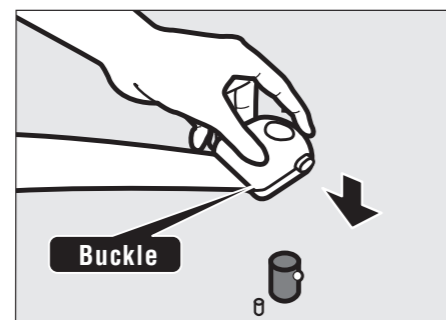
\*Failure to comply with the above could result in serious injury or loss of life.

<b>Age limitation</b>	For Children from a month to One and a half years old. (Less than 13kg of weight)	<b>Max. load</b>	table 245N (25kgf)
-----------------------	-----------------------------------------------------------------------------------	------------------	--------------------

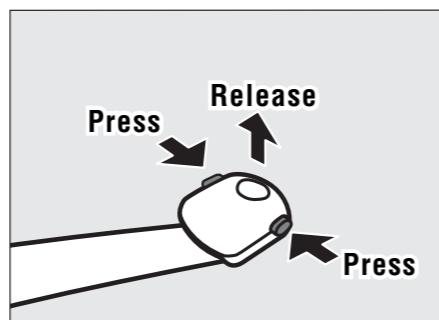
1. Extend the belt.



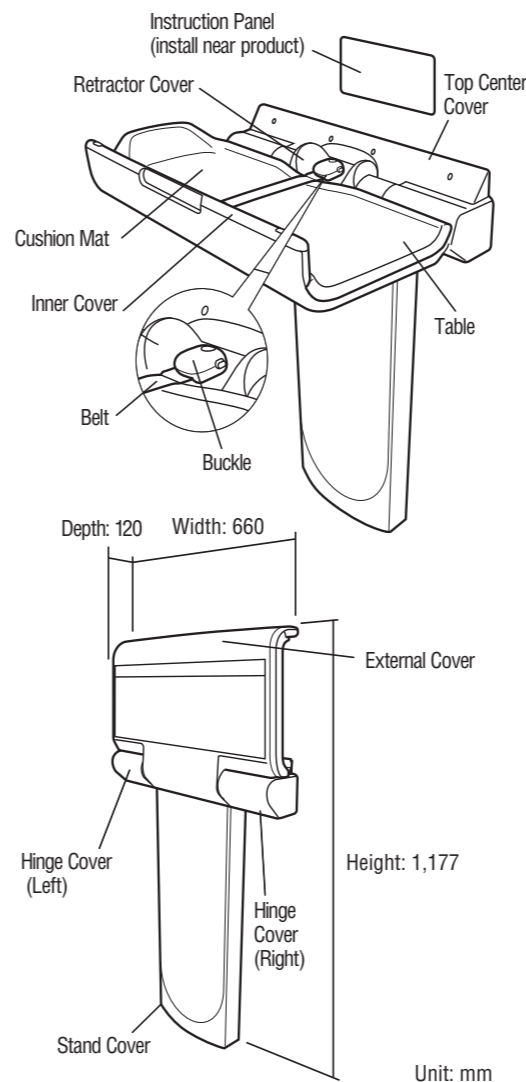
2. Insert the buckle into the catch until it clicks. Check that it is fixed properly.



3. To release press both buttons on the sides of the buckle.



## Name and Dimensions



## For Safety Check

**WARNING** In order to use our product safely, better to do daily checks and annual inspections. Injury or serious accident could occur if safety inspections are not performed and/or problems with the product are not observed.

**The daily or weekly inspection should be done by both eyes and hands. No tools are necessary.**

### 1. Physical Inspection

1. Check that the parts and the cushion mat are securely fixed and does not move about.
2. Make sure the unit does not shake or wobble by shaking the product.
3. Check for scratches or broken parts.

### 2. Table Open/Close Mobility Check

1. To insure that the table is firmly in place and does not wobble, shake or move from left to right.
2. Test the opening and closing function of the table and insure that it does not open too quickly.
3. Check that the table opens slowly.

### 3. Sticker Check

- Stickers and decals should be firmly adhered and legible. Check for scratches, rips, missing stickers or fadedness.

### 4. Belt and Buckle Check

- Check the buckle for scratches or loose parts. Make sure it does not wobble or shake.
- Check that the buckle lock can be safely released.
- Check that the belt is undamaged.
- Check that the belt is located when the buckle is locked by extending the belt.
- Check that the belt can be stored without being twisted.

**If a problem is found during the inspection, immediately stop using it, and contact your dealer for assistance.**

**For more information regarding the maintenance inspection (at charge bases) and repair parts (at charge bases).**

**Product durable period is 7 years. Repair Parts available within 5 years after end of production.**

## Maintenance

- This product is designed for changing children's diapers. After installation, clean periodically.
- Use a watered-down mild detergent to clean product, dry thoroughly.

**CAUTION** Do not use cleaners other than neutral detergents. Using other cleaners may compromise the integrity of the plastic parts of the product, or cause fading, cracks, and other physical damage.

## Technical Specifications

<b>Product Number</b>	BS-F52WH
<b>Product Name</b>	Diaper Changing Station MS BS-F52WH
<b>Dimension</b>	W660xD120xH1,177mm (Open Width:W660xD460xH883mm)
<b>Nett weight</b>	13.3kg
<b>Materials</b>	• Base/ABS resin, aluminum, steel • Surface/synthetic leather (Olefin)

\*Be advised that technical specifications for this product may change without notice for reasons such as improvement in design.

\*For information on products, contact the distribution agency.

Manufacturer **Combi Corporation**  
2-6-7, Motoasakusa, Taito-ku, Tokyo 111-0041 Japan

Distributor **CombiWith Corporation**  
Head Office/2-6-7, Motoasakusa, Taito-ku, Tokyo 111-0041 Japan  
TEL : 81-3-5828-7631 FAX : 81-3-5828-7630  
www.combiwith.co.jp/

\*The Combi Group follow environmental friendly business practice based on ISO 14000 Certification Guidelines.  
Please dispose of your Diaper Changing Station using proper waste management methods.