

BRAND ARTWORK



FONTS

Avenir Next Condensed - Regular

ABCDEFGHIJKLMNOPQRSTUVWXYZ
abcdefghijklmnopqrstuvwxyz
1234567890

Avenir Next Condensed - Medium

ABCDEFGHIJKLMNOPQRSTUVWXYZ
abcdefghijklmnopqrstuvwxyz
1234567890

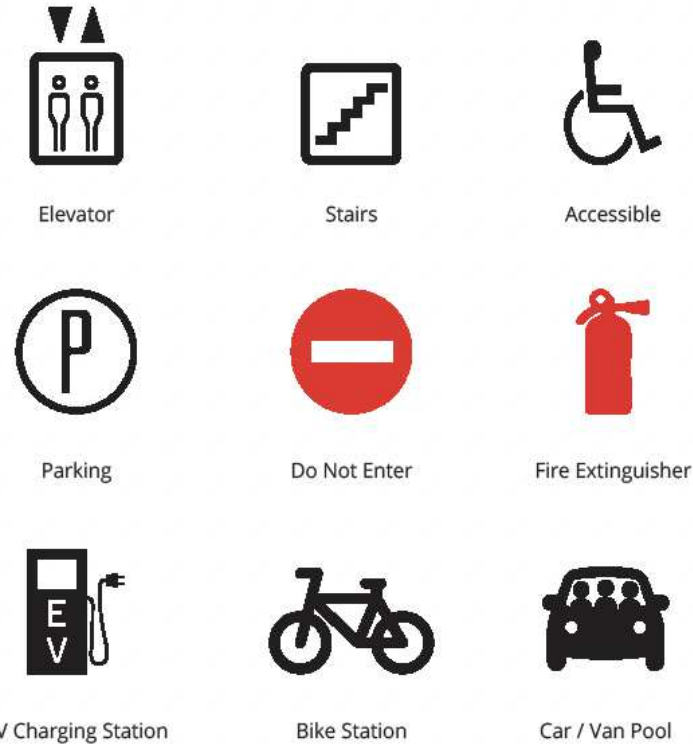
Avenir Next Condensed - Bold

ABCDEFGHIJKLMNOPQRSTUVWXYZ
abcdefghijklmnopqrstuvwxyz
1234567890

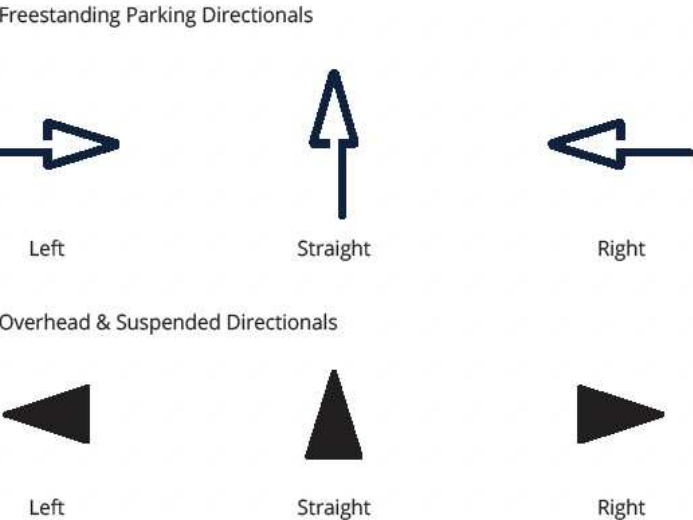
Arvil Sans - Regular

ABCDEFGHIJKLMNOPQRSTUVWXYZ
1234567890

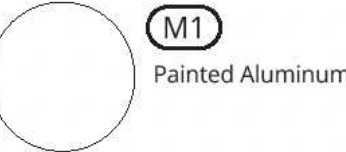
ICONS/SYMBOLS



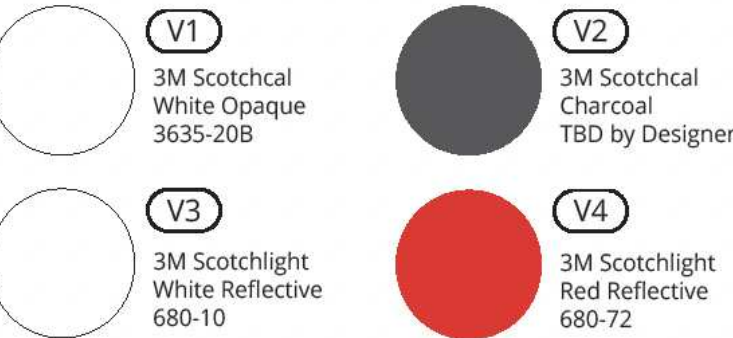
ARROWS

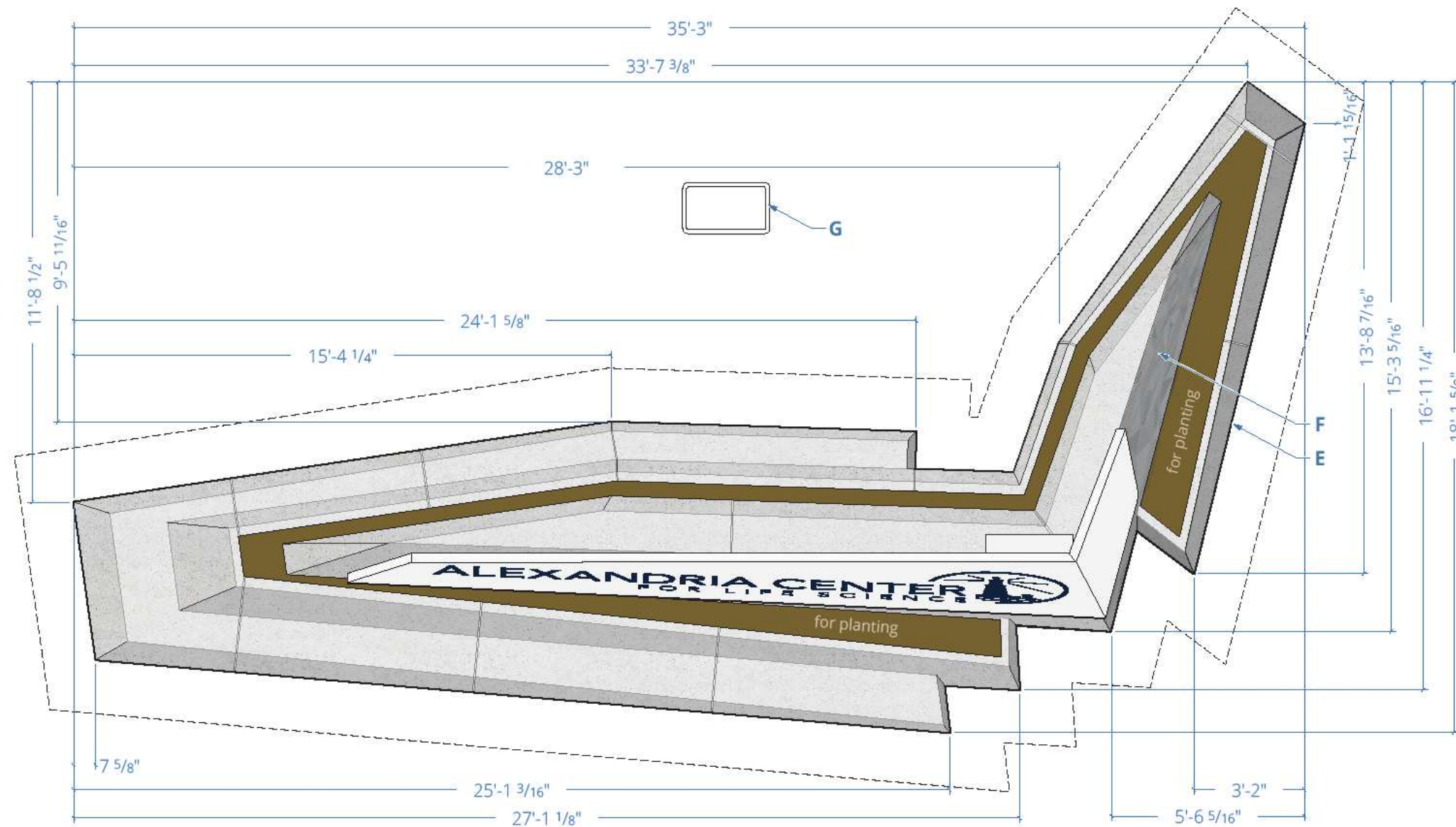


MATERIAL SCHEDULE

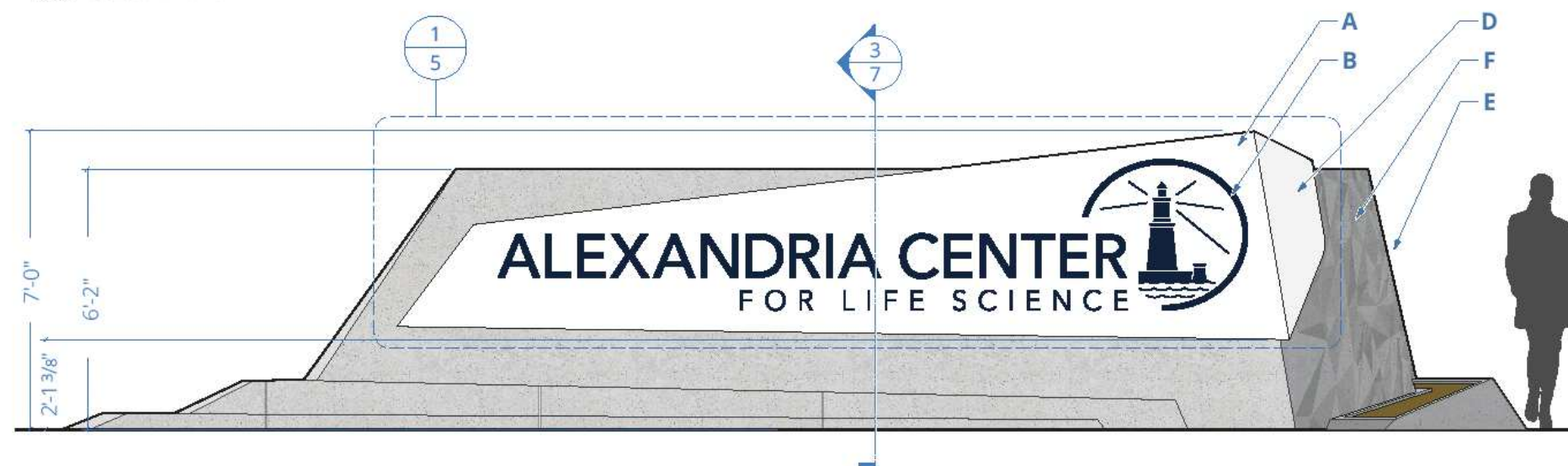


VINYL SCHEDULE

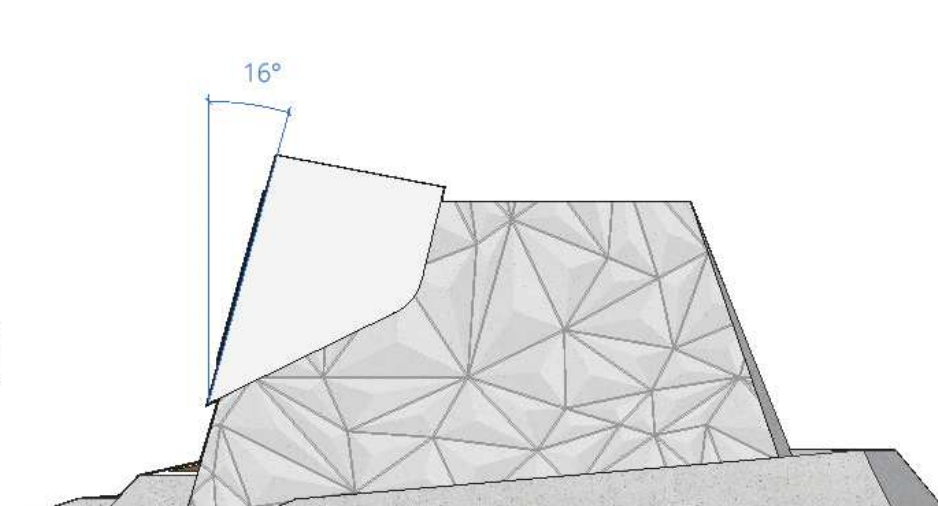




3 PLAN
Scale: 1/4" = 1' - 0"



1 ELEVATION
Scale: 1/4" = 1' - 0"



2 END VIEW
Scale: 1/4" = 1' - 0"

DESCRIPTION

Qty. 1

- A. Front Cabinet:** Fab'd alum. on 1" alum. angle frame w/ 1/8" thk. face & returns. All finished smooth, painted **P1** all faces. Internal LED illumination. Mounting access through face. Cabinet mechanically fastens to concrete monument.
- B. Project Identity:** 1/2" push through proud clear acrylic on translucent w/ frosted returns & white diffuser, faced w/ .063 alum. painted **P3** bonded to acrylic, to halo illuminate.
- C. NOT USED**
- D. Return Cabinet:** Fab'd alum. on 1" alum. angle frame w/ 1/8" thk. face & returns. All finished smooth, painted **P1** all surfaces. Mounting access through face. Cabinet mechanically fastens to concrete monument.
- E. Monument:** Combination of (15) concrete casting on a slab foundation, finished smooth. See Universal Precast drawings for additional detail.
- F. Facet Finish:** Precast concrete w/ etched line pattern w/ 1/4" faceted relief on right return, finished smooth.
- G. Christy Box:** to receive primary power to location by GC.

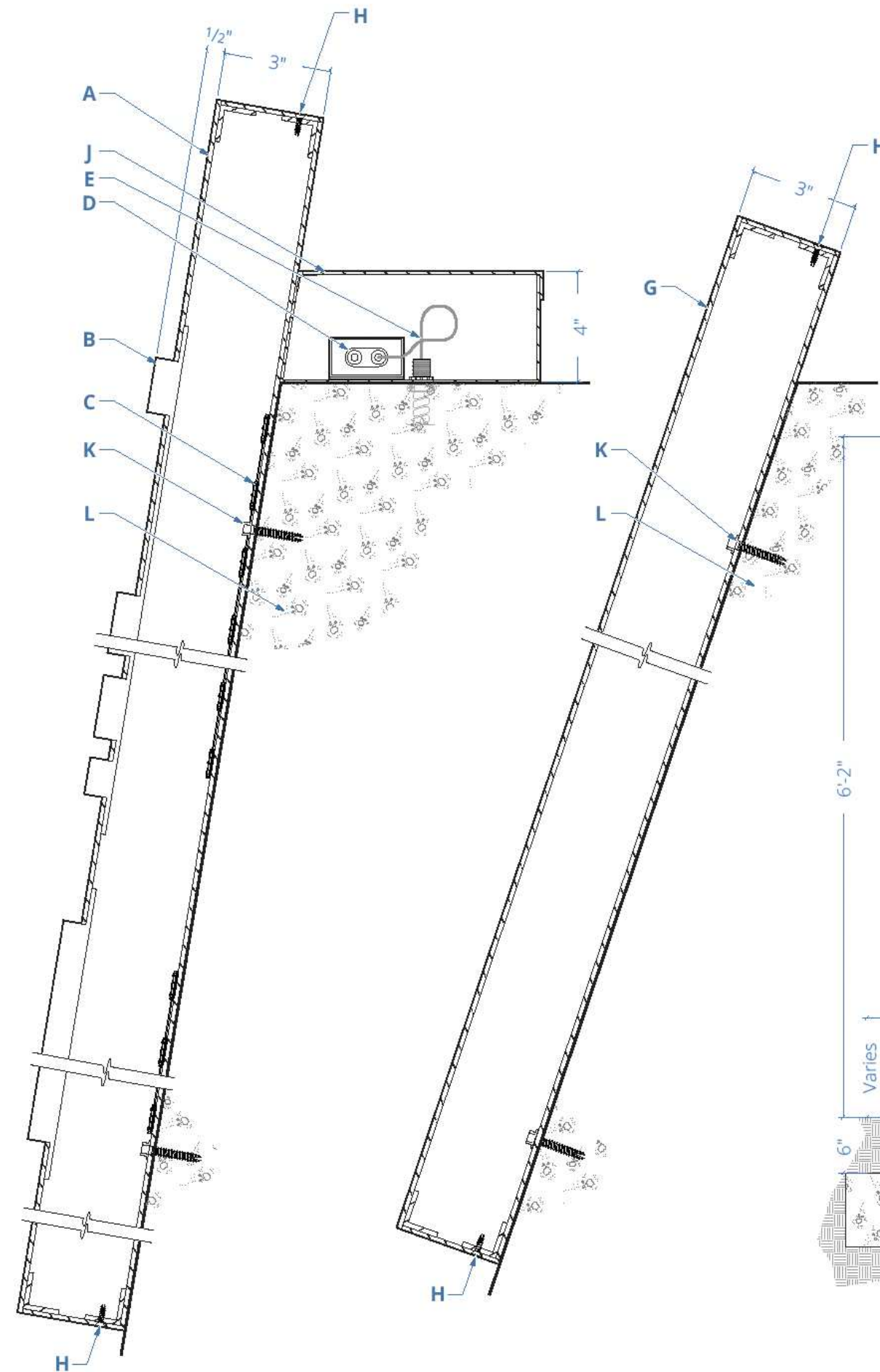
NOTES: See engineering for additional information & specifications.

This sign is intended to be installed in accordance with the requirements of Article 600 of the National Electrical Code and/or other applicable codes. This includes proper grounding and bonding of sign(s).

Sign to be UL listed.

Direct-buried cables requires 24" cover unless under a min. of 2" of concrete per CEC Table 300.5.

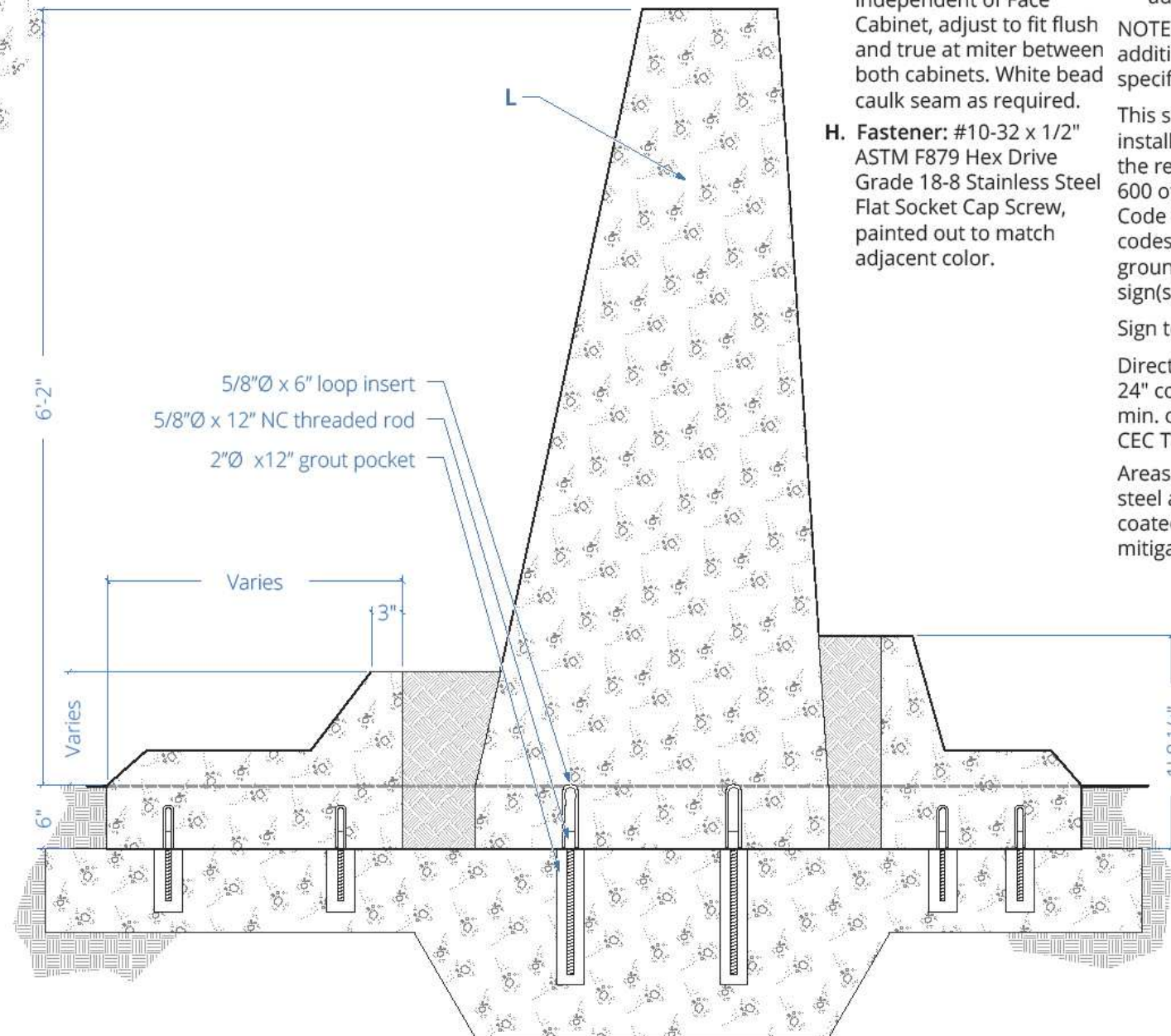
Areas of alum. in contact w/ steel and/or concrete to be coated w/ zinc rich paint to mitigate galvanic corrosion.



1 SECTION DETAIL - FRONT CABINET
Scale: 3" = 1'-0"

2 SECTION DETAIL - RETURN CABINET
Scale: 3" = 1'-0"

3 SECTION DETAIL - PRECAST
Scale: 3/4" = 1'-0"



DESCRIPTION

- A. Front Cabinet:** Fab'd as stated previous.
- B. Project Identity:** 1/2" push through proud clear acrylic on translucent w/ frosted returns & white diffuser, faced w/ .063 alum. painted P3 bonded to acrylic, to halo illuminate.
- C. Illumination:** LED modules 5000k (temp to be reviewed in mock-up) populated for even light distribution.
- D. Power Supply(s):** MAXBrite MDS27760-12 MultiDrive Series 60W LED power supply.
- E. One (1) dedicated 120v/20amp circuit to location by other. Supply 5' wire whip for ease of connection**
- F. Secondary Wiring:** power exterior grade waterproof wiring contained in rigid PVC tube conduit and direct bury to 24" in depth where applicable.
- G. Return Cabinet:** Fab'd as stated previous. Mounts independent of Face Cabinet, adjust to fit flush and true at miter between both cabinets. White bead caulk seam as required.
- H. Fastener:** #10-32 x 1/2" ASTM F879 Hex Drive Grade 18-8 Stainless Steel Flat Socket Cap Screw, painted out to match adjacent color.
- J. Raceway:** Fab'd .090" thk alum., waterproof, to conceal power stubbed through monument, electrical, LED power supplies, shut-off, painted grey to match monument.
- K. Anchor(s):** 1/4" Ø x 3/4" nom. embed. Hilti HDI-P KZ drop-in anchor.
- L. Monument:** Combination of (15) concrete casting on a slab foundation, finished smooth. Concrete color Davis Graphite. See Universal Precast drawings for additional detail.

NOTES: See engineering for additional information & specifications.

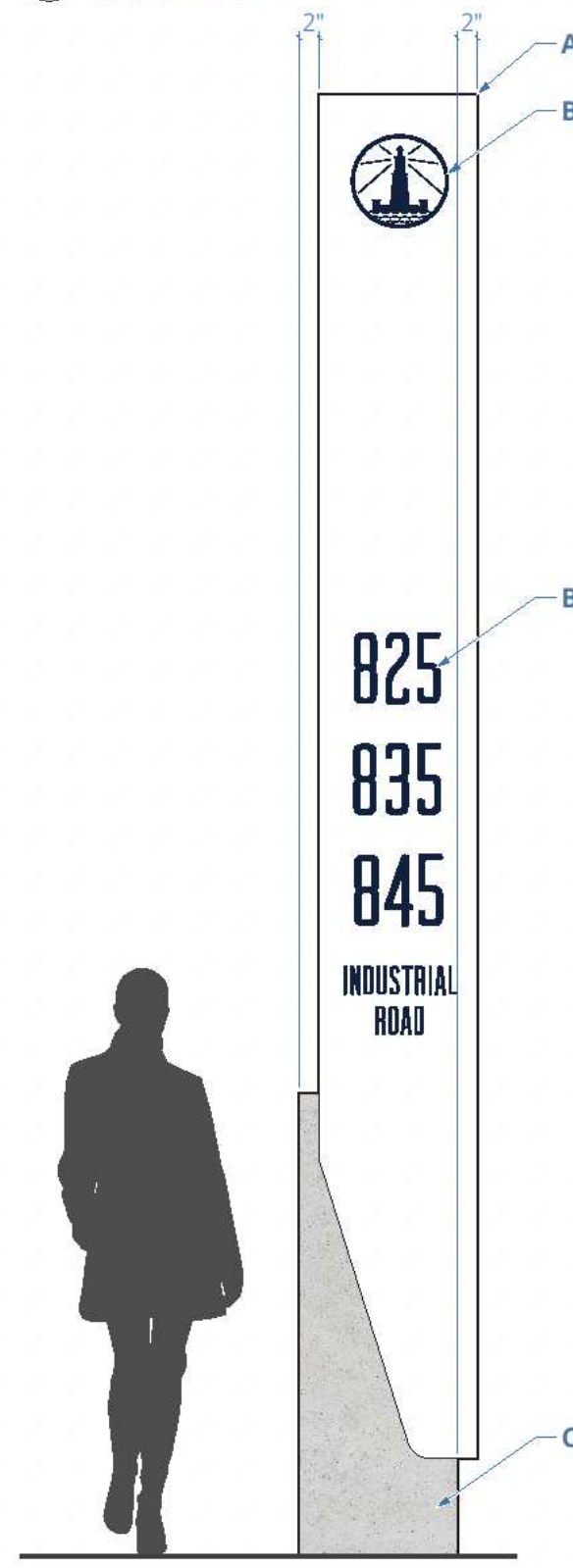
This sign is intended to be installed in accordance with the requirements of Article 600 of the National Electrical Code and/or other applicable codes. This includes proper grounding and bonding of sign(s).

Sign to be UL listed.

Direct-buried cables requires 24" cover unless under a min. of 2" of concrete per CEC Table 300.5.

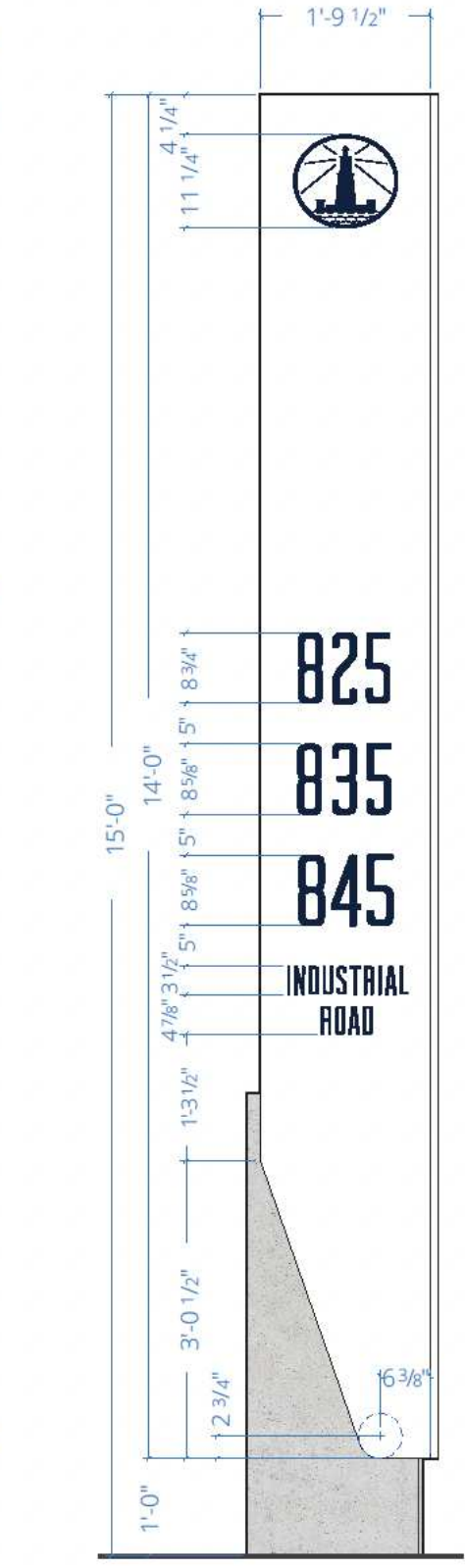
Areas of alum. in contact w/ steel and/or concrete to be coated w/ zinc rich paint to mitigate galvanic corrosion.

6 PLAN VIEWS
Scale: 1/2" = 1' - 0"

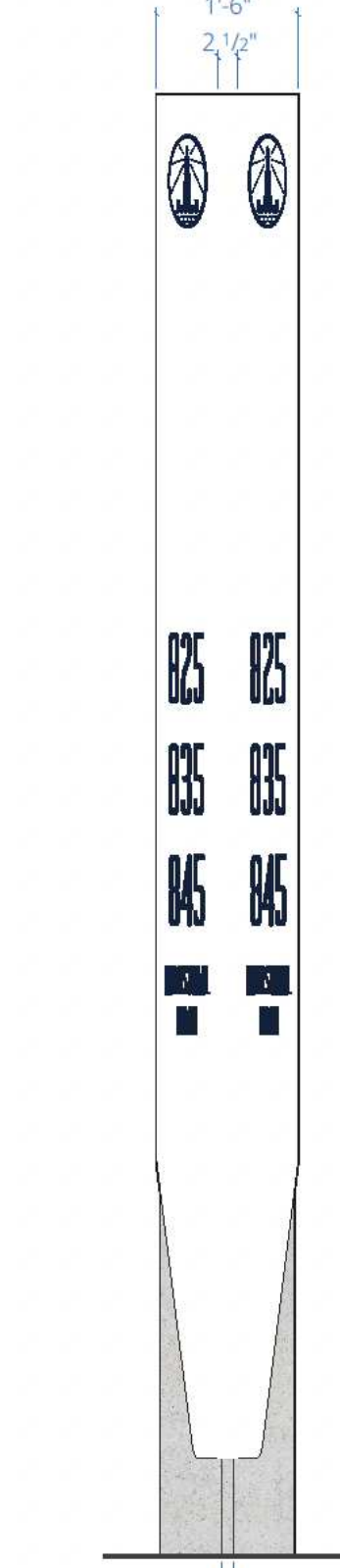


1 ELEVATIONS - LEFT
Scale: 1/2" = 1' - 0"

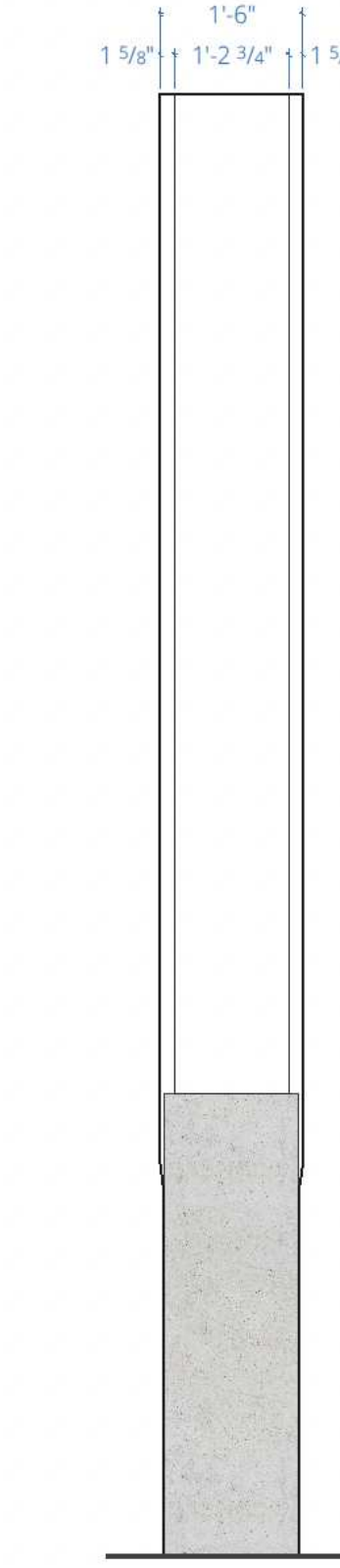
2 LEFT FLAT
Scale: 1/2" = 1' - 0"



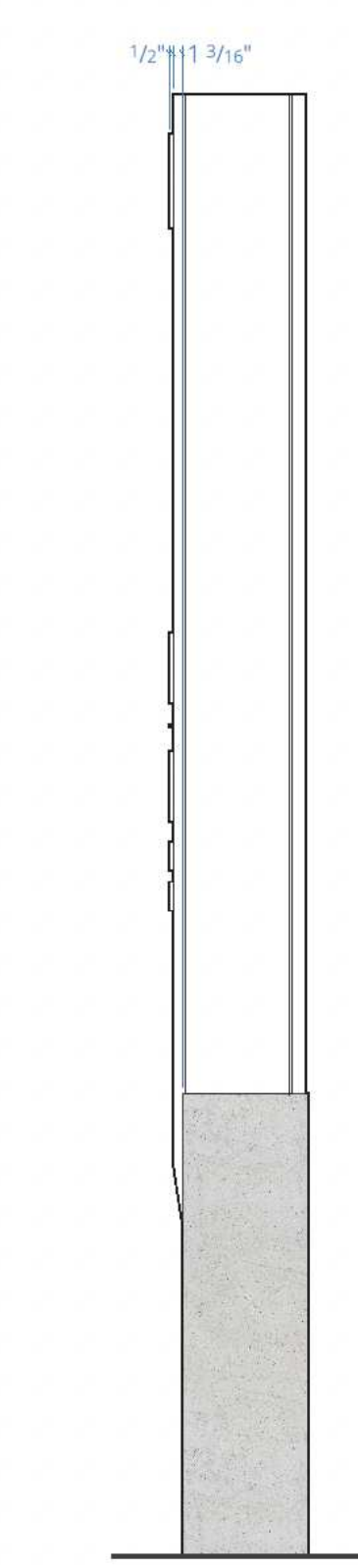
3 FRONT
Scale: 1/2" = 1' - 0"



4 BACK
Scale: 1/2" = 1' - 0"

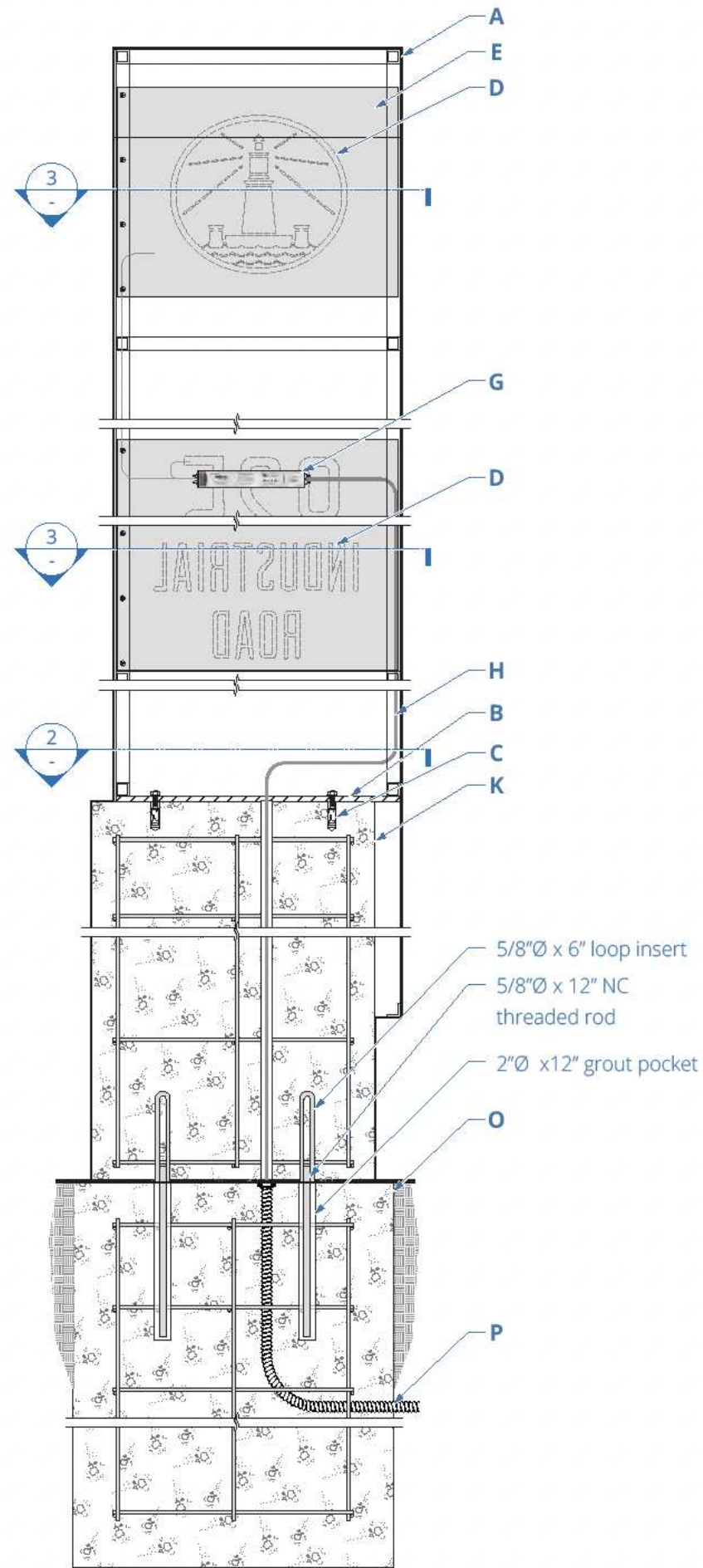


5 BACK @ 21.15°
Scale: 1/2" = 1' - 0"

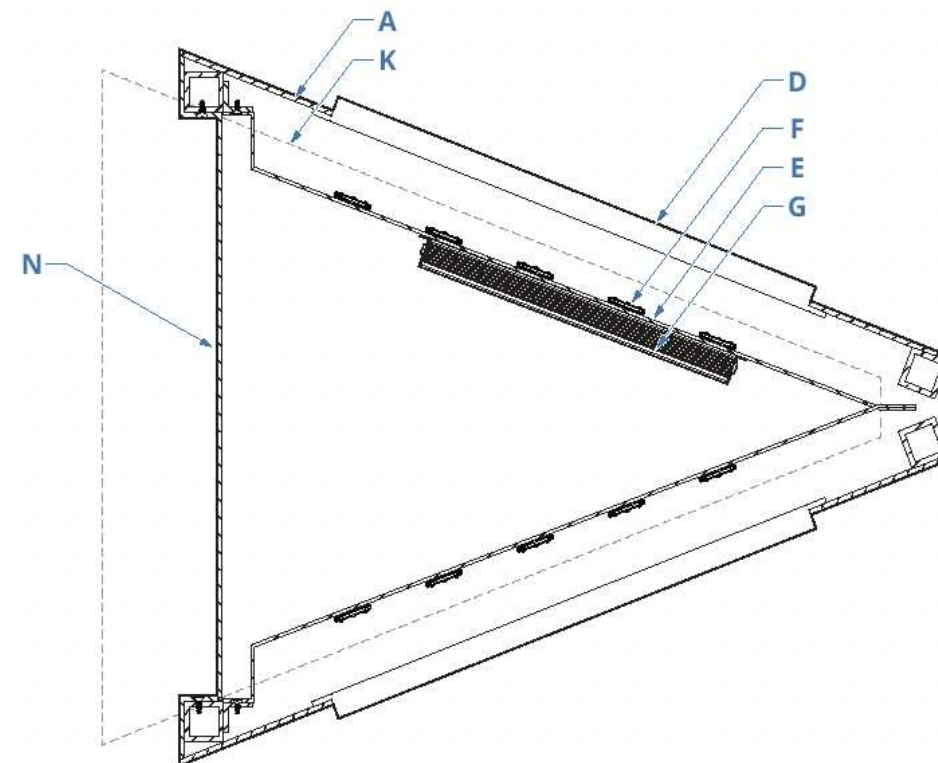


DESCRIPTION	Qty. 1
-------------	--------

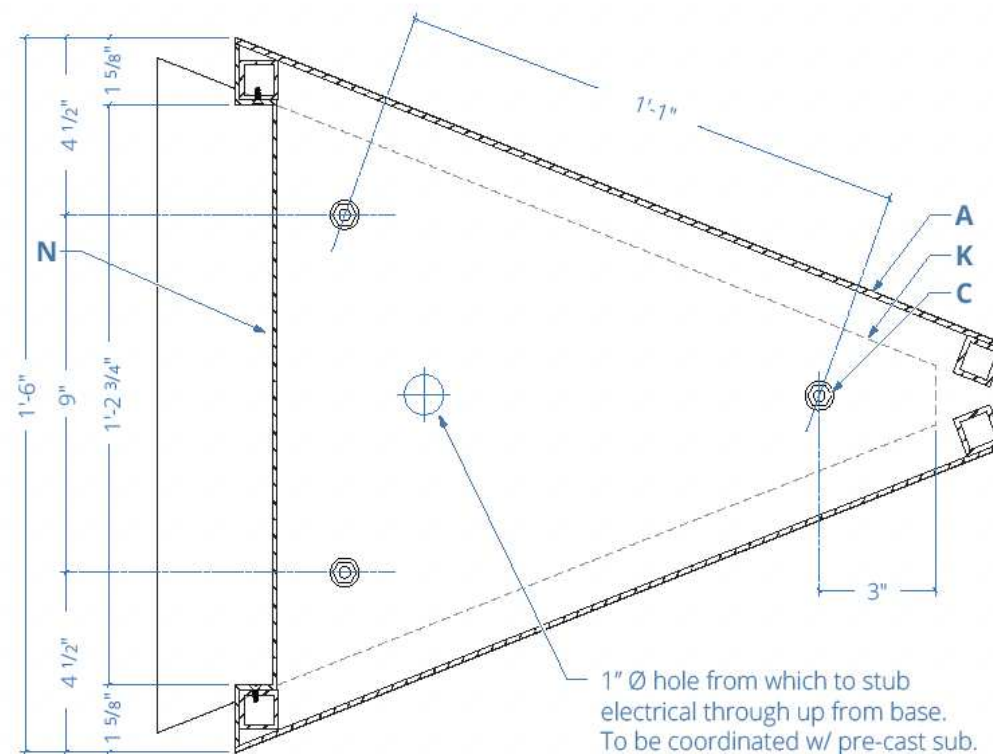
- A. Cabinet: Fab'd alum.; 1/8" thk. skin on 1" sq. tube welded frame, access through back face, finished smooth, painted **P1** all surfaces. Internal LED illumination. Mechanically fastens to concrete base.
 - B. Logo & Message: 1/2" push through proud clear acrylic on translucent w/ frosted returns & white diffuser, faced w/ .063 alum. painted **P3** bonded to acrylic, to halo illuminate.
 - C. Base: Precast concrete to match Davis Graphite set in place on rebar projections from foundation.
- NOTE: Message shown for placement only. Copy to be verified, reviewed and approved by client prior to fabrication.



1 SECTION DETAIL - VERTICAL
Scale: 1:5



3 SECTION DETAIL - ILLUMINATION
Scale: 1:5



2 SECTION DETAIL - MOUNTING
Scale: 1:5

DESCRIPTION

- A. Cabinet:** Fab'd alum.; 1/8" thk. skin on 1" sq. tube welded frame, access through back face, finished smooth, painted **P1** all surfaces. Internal LED illumination. Mechanically fastens to concrete base.
- B. Base Plate:** 3/8" thk. alum plate welded to frame.
- C. Anchor(s):** 5/8" Ø x 4-7/16" nom. embed. Hilti LB-TZ expansion anchor.
- D. Logo & Message:** 1/2" push through proud clear acrylic on translucent w/ frosted returns & white diffuser, faced w/ .063 alum. painted **P3** bonded to acrylic, to halo illuminate.
- E. Illumination Pan:** Break-formed .090" alum. painted fluorescent white to promote light distribution mechanically fastened to frame behind **B**.
- F. Illumination:** LED modules 5000k (temp to be reviewed in mock-up) populated for even light distribution.
- G. Power Supply:** MAXBrite MDS27760-12 MultiDrive Series 60W LED power supply.
- H. Secondary Wiring:** power exterior grade waterproof wiring contained in rigid PVC tube conduit and direct bury to 24" in depth where applicable.
- J. Access Panel:** 1/8" thk. plate painted **P1** all surfaces w/ FHMS secures back access panel to frame, painted out to match.
- K. Base:** Precast concrete set in place on rebar projections from foundation.
- L. NOT USED.**
- M. Base:** Precast concrete to match Davis Graphite w/ etched line pattern on right return. Threaded rods set and grouted in place into foundation.
- N. Access Panel:** 1/8" thk. plate fabricated & painted **P1** all surfaces, fastened in place w/ #10-32 x 1/2" ASTM F879 Hex Drive Grade 18-8 Stainless Steel Flat Socket Cap Screw, painted out to match adjacent color.
- O. Foundation:** Engineered 24" Ø consolidate concrete f'c= 2500 psi.
- P. Primary Power:** 120/270v single circuit switched, to location by GC. To be located to center on center of sign location w/ 7.5' whip.

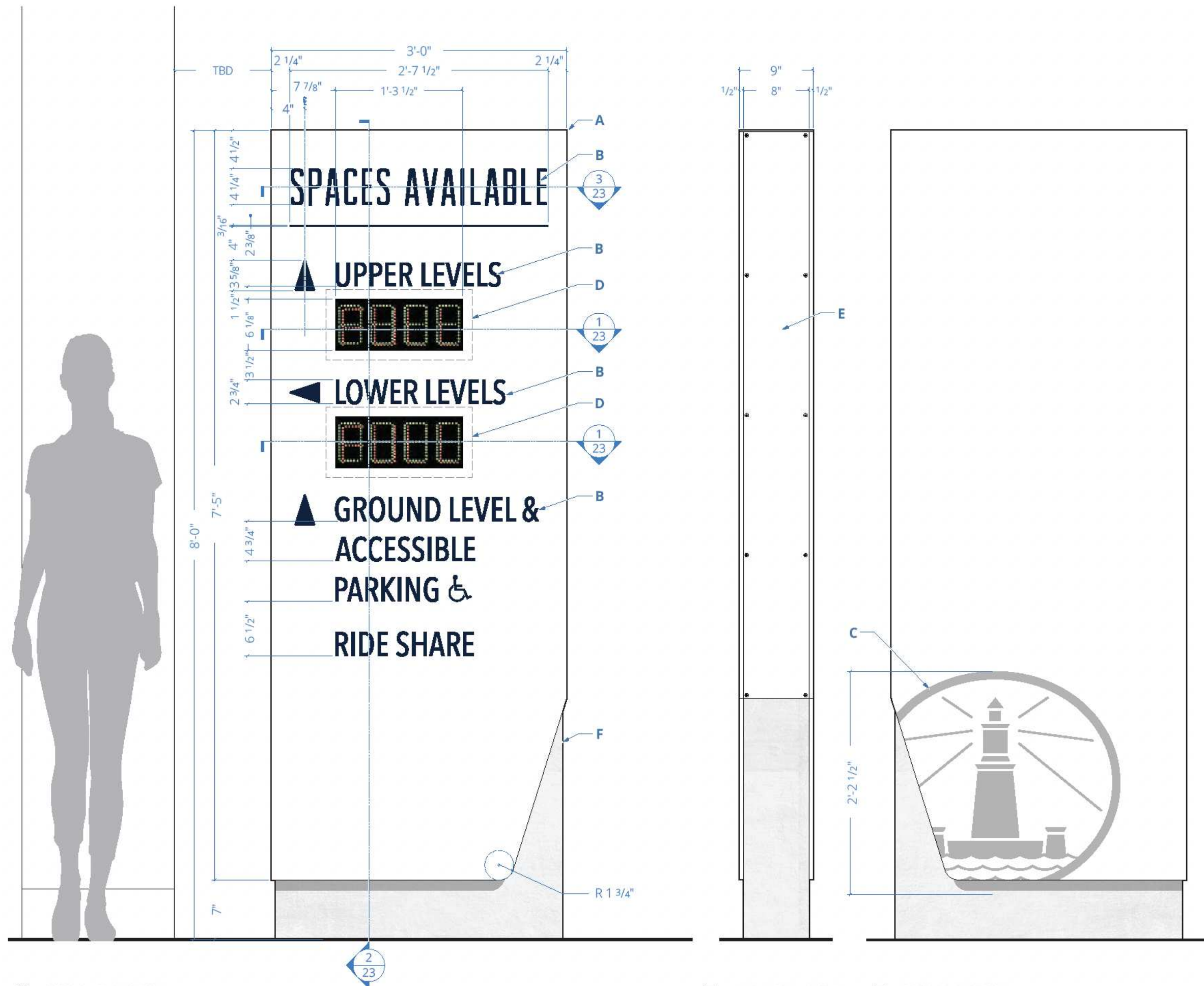
NOTES: See engineering for additional information & specifications.

This sign is intended to be installed in accordance with the requirements of Article 600 of the National Electrical Code and/or other applicable codes. This includes proper grounding and bonding of sign(s).

Sign to be UL listed.

Direct-buried cables requires 24" cover unless under a min. of 2" of concrete per CEC Table 300.5.

Areas of alum. in contact w/ steel and/or concrete to be coated w/ zinc rich paint to mitigate galvanic corrosion.



DESCRIPTION Qty. 1

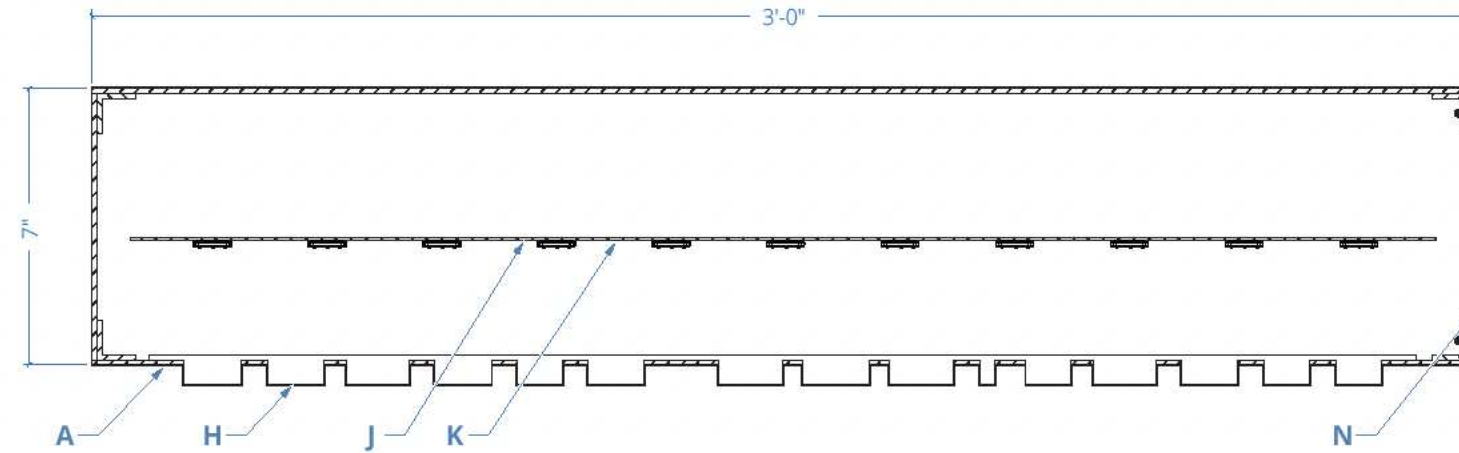
- A. Cabinet:** Fab'd alum. blade, wraps base, on 3/4" alum. angle frame w/ 1/8" thk. faces. All finished smooth, painted **P1** all surfaces. Mechanically fastens to concrete base.
- B. Logo & Message:** 1/2" push through proud clear acrylic on translucent w/ frosted returns & white diffuser, faced w/ .063 alum. painted **P3** bonded to acrylic, to halo illuminate.
- C. Project Logo:** Etched & filled **P3** finished w/ gloss clear.
- D. Digital Counter(s):** Q-Free #TMS-54DF 4 digit LED insert 24VDC/0.35 amp.
- E. Access Panel:** 1/8" thk. alum. sheet, painted **P1**. Mechanically fastened in place w/ #10-32 x 1/2" ASTM F879 Hex Drive Grade 18-8 Stainless Steel Flat Socket Cap Screw, painted out to match adjacent color.
- F. Base:** Engineered pour in place concrete to match Davis Graphite, finished smooth above grade. Power and data to be concealed within.

NOTE: Message shown for placement only. Copy to be verified, reviewed and approved by client prior to fabrication.
See engineering for additional information & specifications.

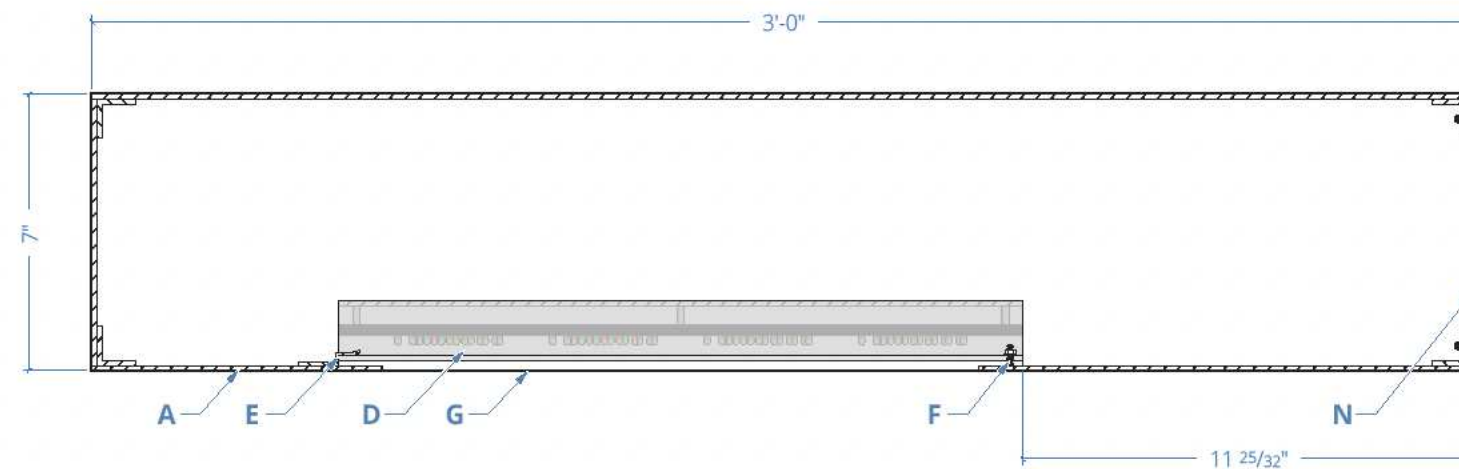
1 A.08.01 ELEVATION
Scale: 1" = 1' - 0"

2 END VIEW - RIGHT
Scale: 1" = 1' - 0"

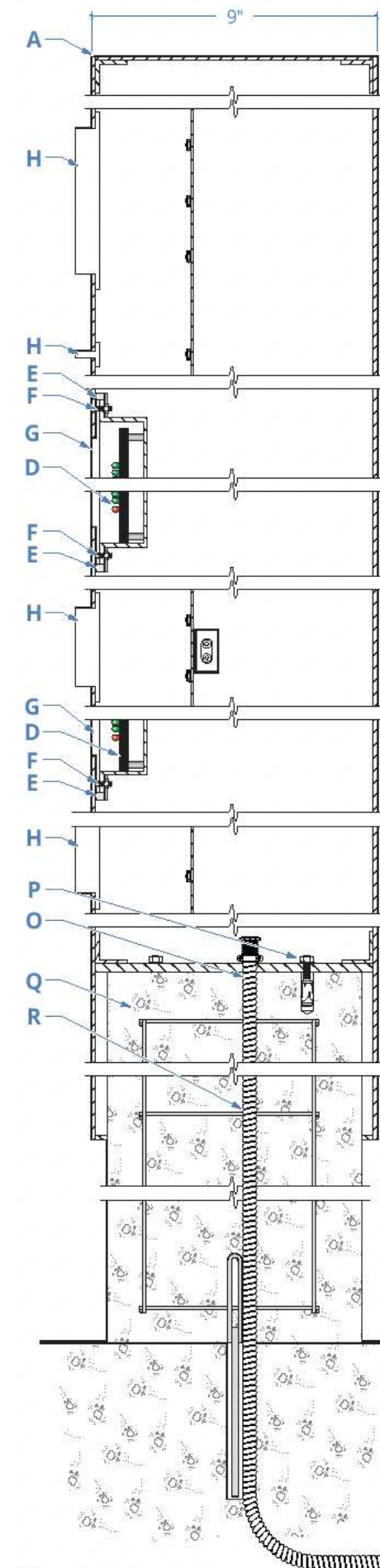
3 REAR ELEVATION
Scale: 1" = 1' - 0"



3 TYPICAL SECTION DETAIL - PUSH THROUGH
Scale: 1:5



1 TYPICAL SECTION DETAIL - DIGITAL COUNTER
Scale: 1:5



2 SECTION DETAIL
Scale: 1:5

DESCRIPTION

- A. Cabinet:** Fab'd alum. on 3/4" alum. angle frame w/ 1/8" thk. faces. All finished smooth, painted **P1** all surfaces. Mechanically fastens to concrete base.
- B. NOT USED**
- C. Project Logo:** Etched & filled **P3** finished w/ gloss clear.
- D. Digital Counter(s):** Q-Free #TMS-54DF 4 digit LED insert 24VDC/0.35 amp. Data lines & transformer to be connected by others.
- E. Retainer Clips:** .090" thk. alum. break formed to receive **D** in place.
- F. Fastener:** Threaded stud pop-welded, secures **D** in place.
- G. Lens:** 1/4" thk. clear impact resistant polycarbonate, daddo to fit flush to face.
- H. Logo & Message:** 1/2" push through proud clear acrylic on translucent w/ frosted returns & white diffuser, faced w/ .063 alum. painted **P3** bonded to acrylic, to halo illuminate.
- J. Illumination Pan:** Break-formed .090" alum. painted fluorescent white to promote light distribution mechanically fastened to frame behind **B**.
- K. Illumination:** LED modules 5000k (temp to be reviewed in mock-up) populated for even light distribution.
- L. Power Supply:** MAXBrite MDS23760-12 MultiDrive Series 60W LED power supply.
- M. Secondary Wiring:** power exterior grade waterproof wiring contained in rigid PVC tube conduit and direct bury to 24" in depth where applicable.
- N. Access Panel:** 1/8" thk. alum. sheet, painted **P1**. Mechanically fastened in place w/ #10-32 x 1/2" ASTM F879 Hex Drive Grade 18-8 Stainless Steel Flat Socket Cap Screw, painted out to match adjacent color.
- O. Base Plate:** 1/4" alum. plate.
- P. Anchor:** 3/8" Ø x 3/4" nom. embed Hilti HDHP KZ drop-in anchor(s), typ
- Q. Base:** Engineered pour in place concrete to match Davis Graphite, finished smooth above grade. Power and data to be concealed within.
- R. Power & Data:** 110/240v & data to location by GC, w/ 15' whip for each provided.

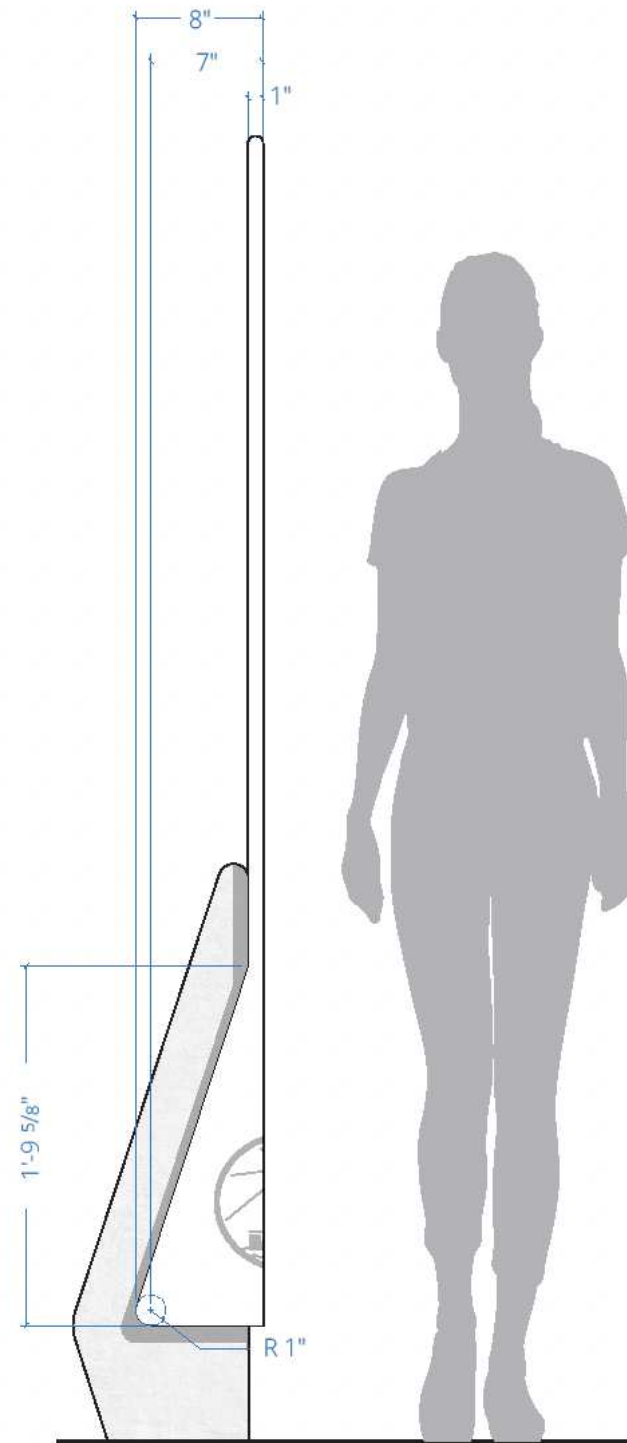
NOTES: See engineering for additional information & specifications.

This sign is intended to be installed in accordance with the requirements of Article 600 of the National Electrical Code and/or other applicable codes. This includes proper grounding and bonding of sign(s).

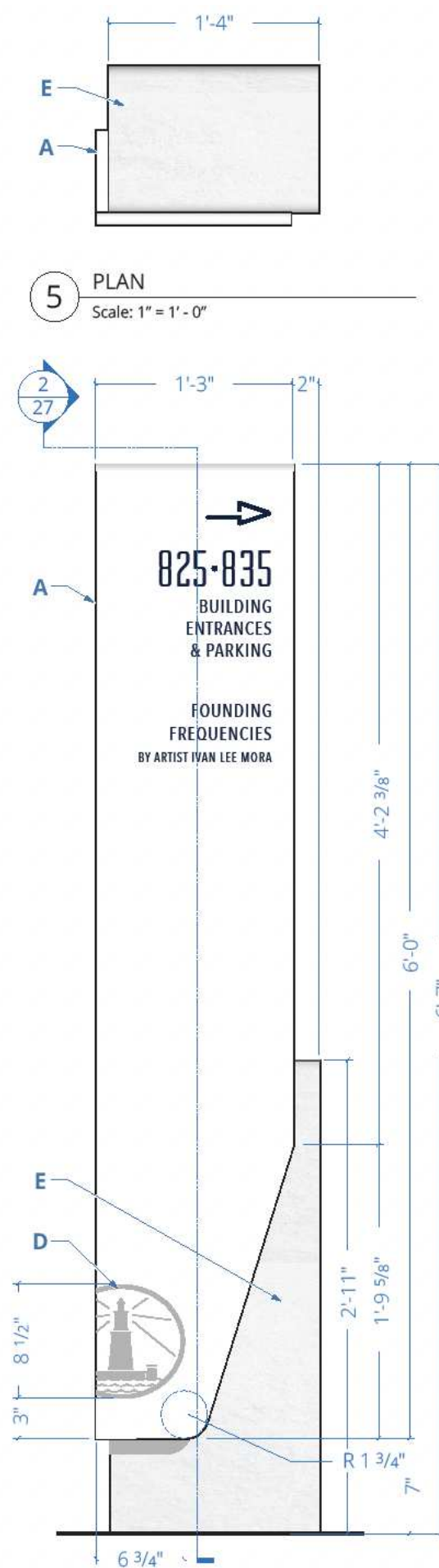
Sign to be UL listed.

Direct-buried cables requires 24" cover unless under a min. of 2" of concrete per CEC Table 300.5.

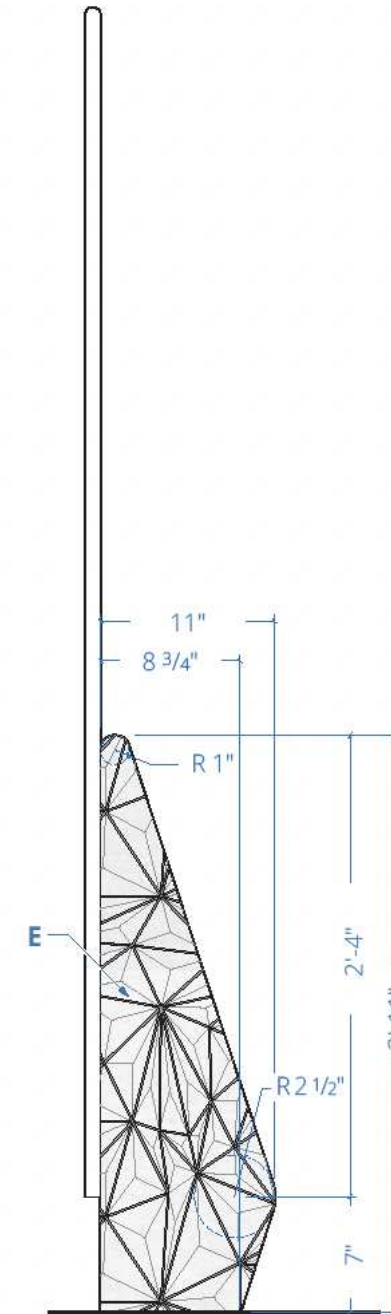
Areas of alum. in contact w/ steel and/or concrete to be coated w/ zinc rich paint to mitigate galvanic corrosion.



1 END VIEW - LEFT
Scale: 1" = 1' - 0"



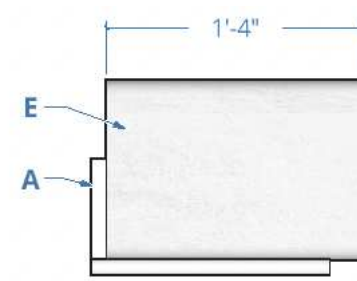
2 B1.01 - ELEVATION
Scale: 1" = 1' - 0"



3 END VIEW - RIGHT
Scale: 1" = 1' - 0"



4 B1.01 - REAR ELEVATION
Scale: 1" = 1' - 0"

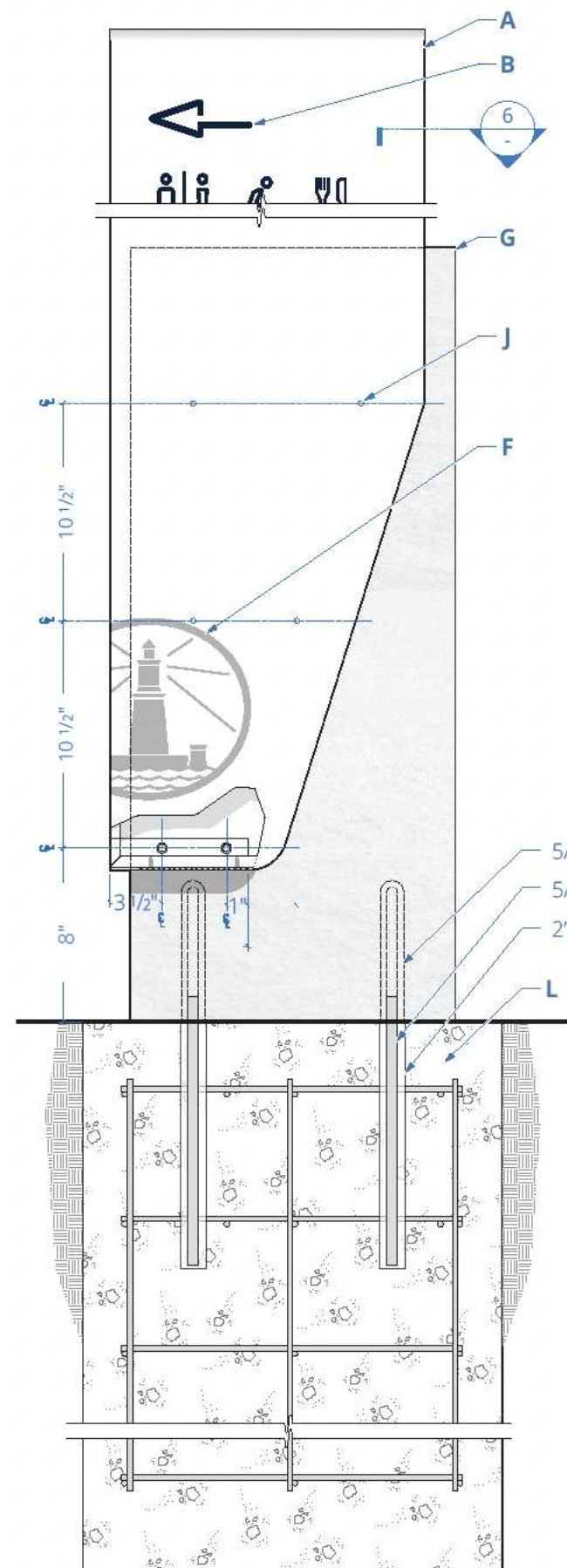


5 PLAN
Scale: 1" = 1' - 0"

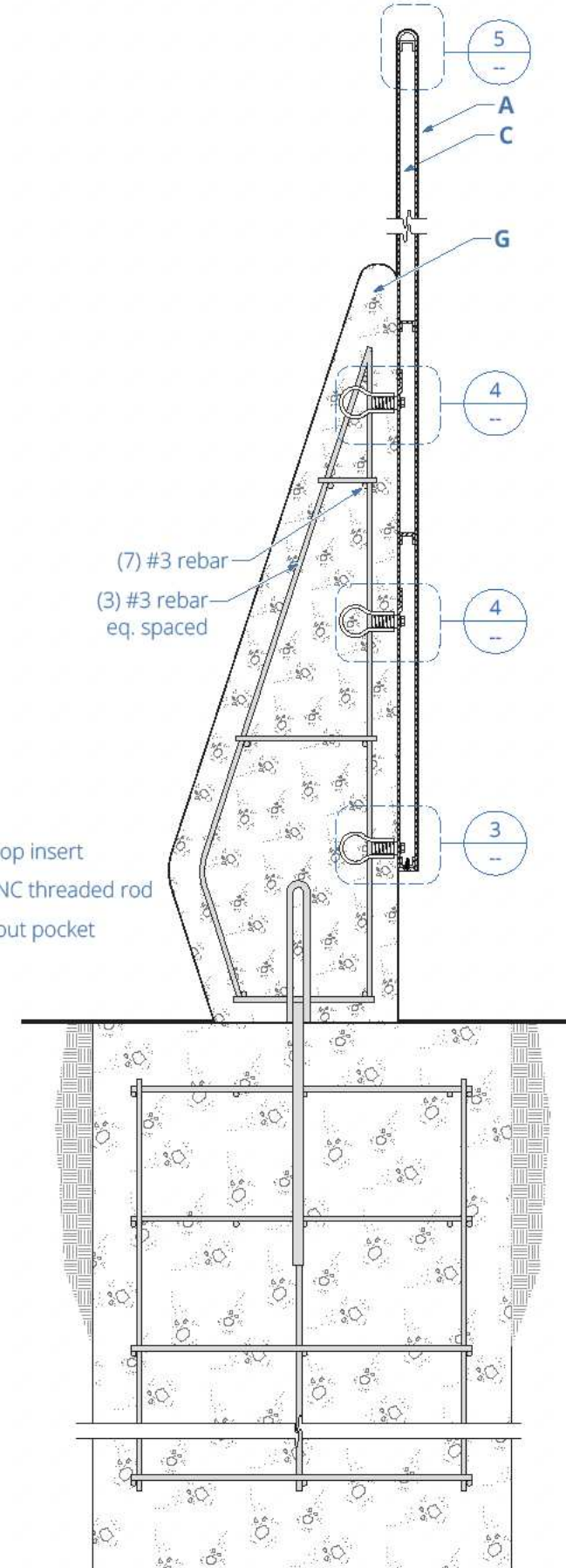
DESCRIPTION Qty. 4

- A. Panel: Fab'd alum. blade, wraps base, on 3/4" alum. channel frame w/ 1/8" thk. faces & 1" Ø half round alum. top cap. All finished smooth, painted **P1** all surfaces. Mechanically fastens to concrete base.
- B. Message & Graphics: Masked & sprayed painted to match **P2**.
- C. Back Panel: 1/8" thk. alum. w/ Direct Embed Coating System to match **M2** w/ message & graphics masked & sprayed painted to match **P1**. Inset flush and affix w/ Lords Structural Adhesive.
- D. Project Logo: Etched & filled **P3** finished w/ gloss clear.
- E. Base: Precast concrete to match David Graphite w/ etched line pattern w/ 1/4" faceted relief on right return. Threaded rods set and grouted in place into foundation. See Universal Precast drawings for additional detail.

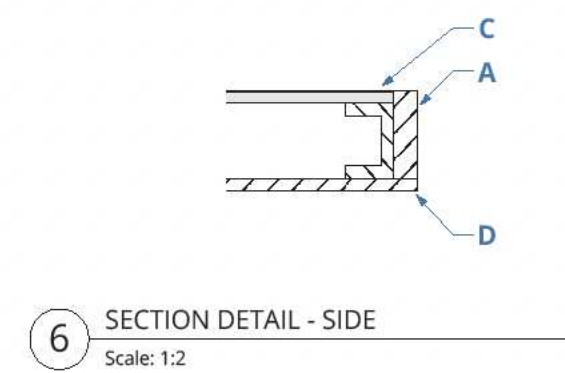
NOTE: Message shown for placement only. Copy to be verified, reviewed and approved by client prior to fabrication.



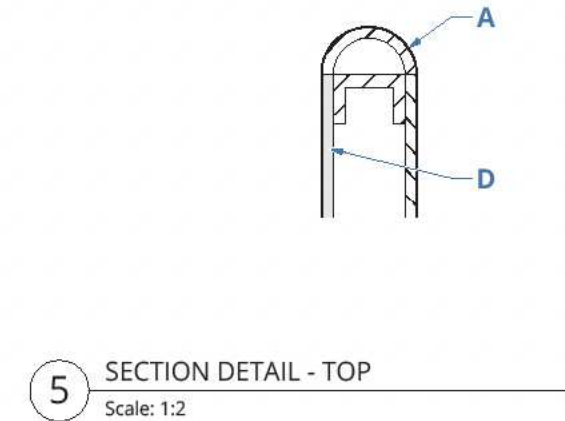
1 FRONT ELEVATION - FOUNDATION
Scale: 1 1/2" = 1' - 0"



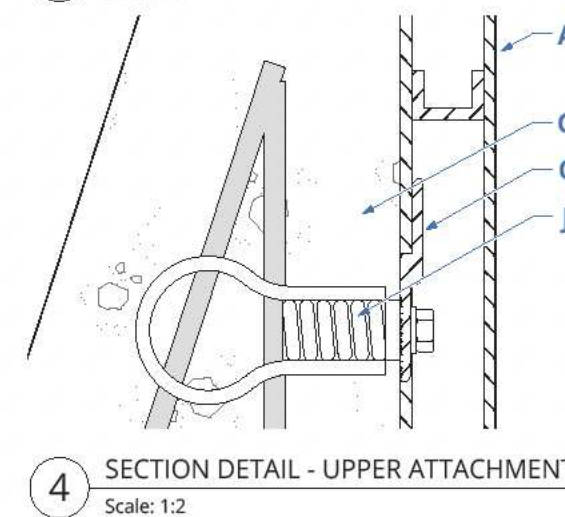
2 SIDE ELEVATION - FOUNDATION
Scale: 1 1/2" = 1' - 0"



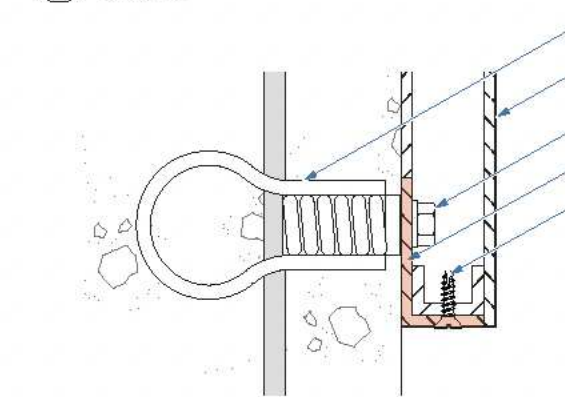
6 SECTION DETAIL - SIDE
Scale: 1:2



5 SECTION DETAIL - TOP
Scale: 1:2



4 SECTION DETAIL - UPPER ATTACHMENT
Scale: 1:2

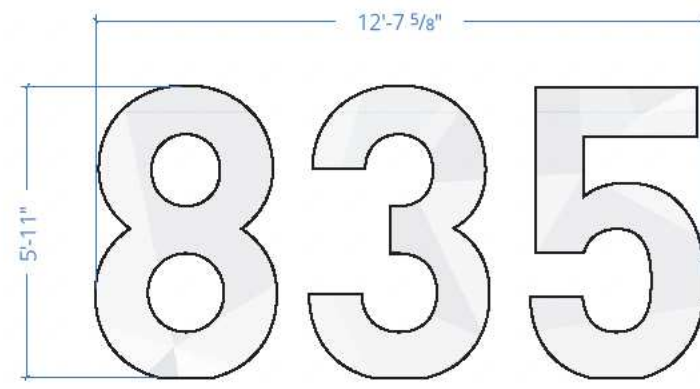


3 SECTION DETAIL - LOWER ATTACHMENT
Scale: 1:2

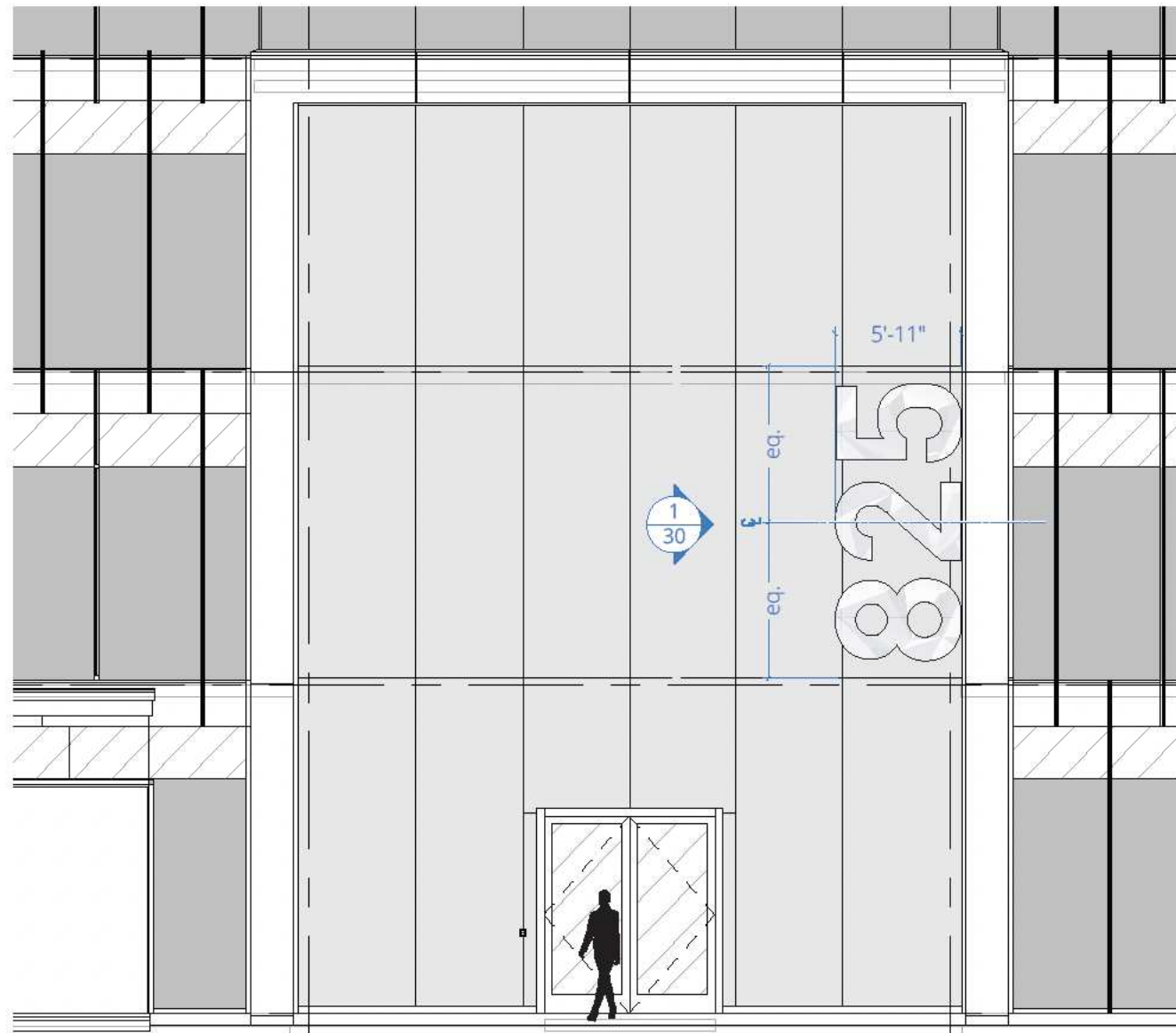
DESCRIPTION

- A. Panel:** Fab'd alum. blade, wraps base, on 3/4" alum. channel frame w/ 1/8" thk. faces & 1" Ø half round alum. top cap. All finished smooth, painted **P1** all surfaces. Mechanically fastens to concrete base.
- B. Message & Graphics:** Masked & sprayed painted to match **P2**.
- C. Back Panel:** 1/8" thk. alum. w/ Direct Embed Coating System to match **M2** w/ message & graphics masked & sprayed painted to match **P1**. Inset flush and affix w/ Lords Structural Adhesive.
- D. Back Panel Border:** 1/4" thk. alum. painted **P1**.
- E. Mounting:** 1/4" thk. alum. z-clip to capture Panel back face.
- F. Project Logo:** Etched & filled **P3** finished w/ gloss clear.
- G. Base:** Precast concrete to match David Graphite w/ etched line pattern w/ 1/4" faceted relief on right return. Threaded rods set and grouted in place into foundation. See Universal Precast drawings for additional detail.
- H. Mounting Angle :** 1.5" x 7/8" x .125" alum. angle, wraps corner to secure Panel two sides, painted **P1**.
- J. Ferrule:** 3/8" Ø S/S thru-bolt & 2 3/4" min. embed Conac ferrule insert.
- K. Set Screws:** #10-32 x 1/2" ASTM F879 Hex Drive Grade 18-8 Stainless Steel Flat Socket Cap Screw, painted out to match, secures panel to angle.
- L. Foundation:** Engineered 20" Ø consolidate concrete f'c= 2500 psi.

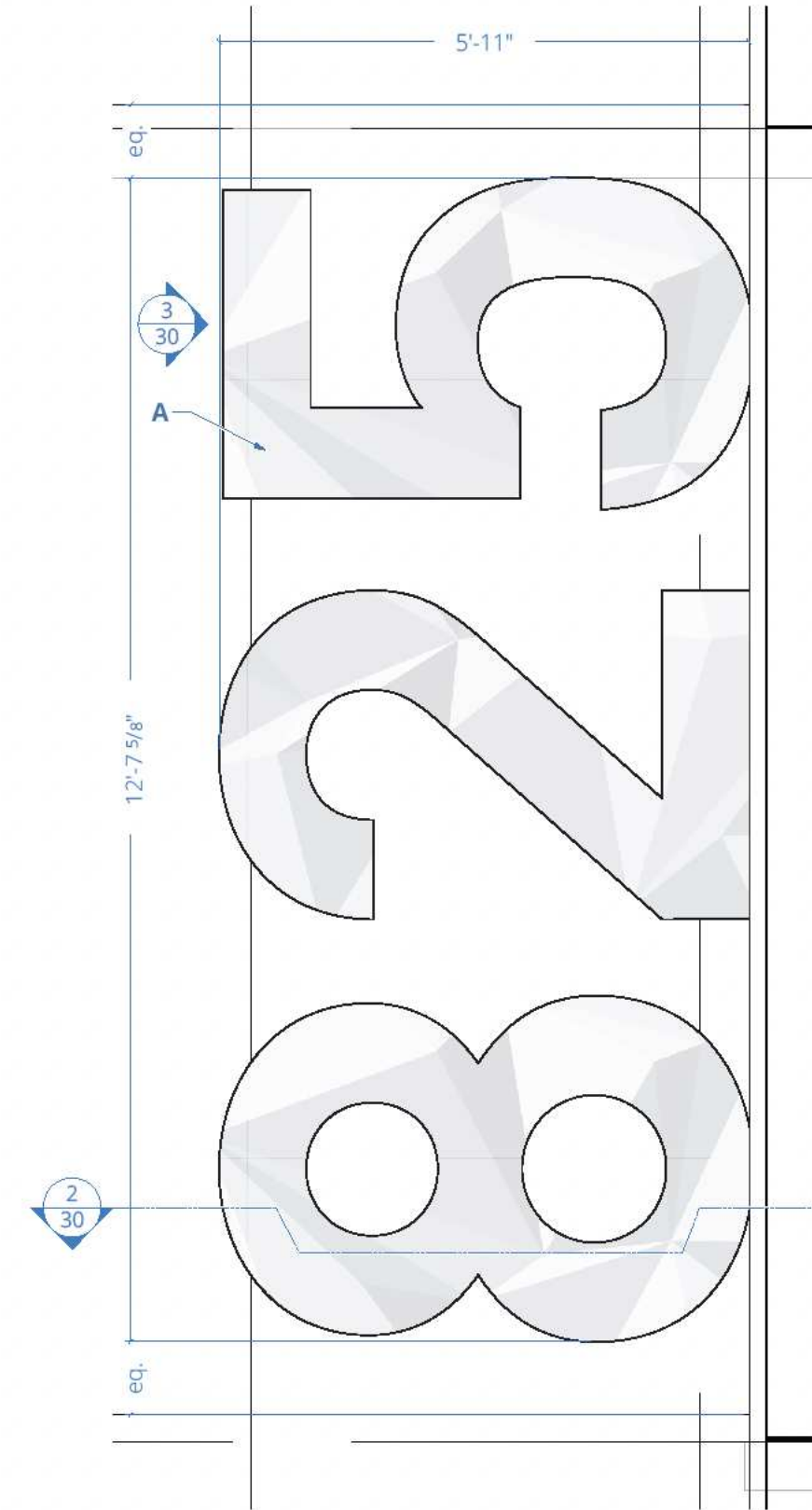
NOTE: See engineering for additional information & specifications.



3 **C1.02 - MESSAGE VARIATION**
Scale: 1/4" = 1' - 0"



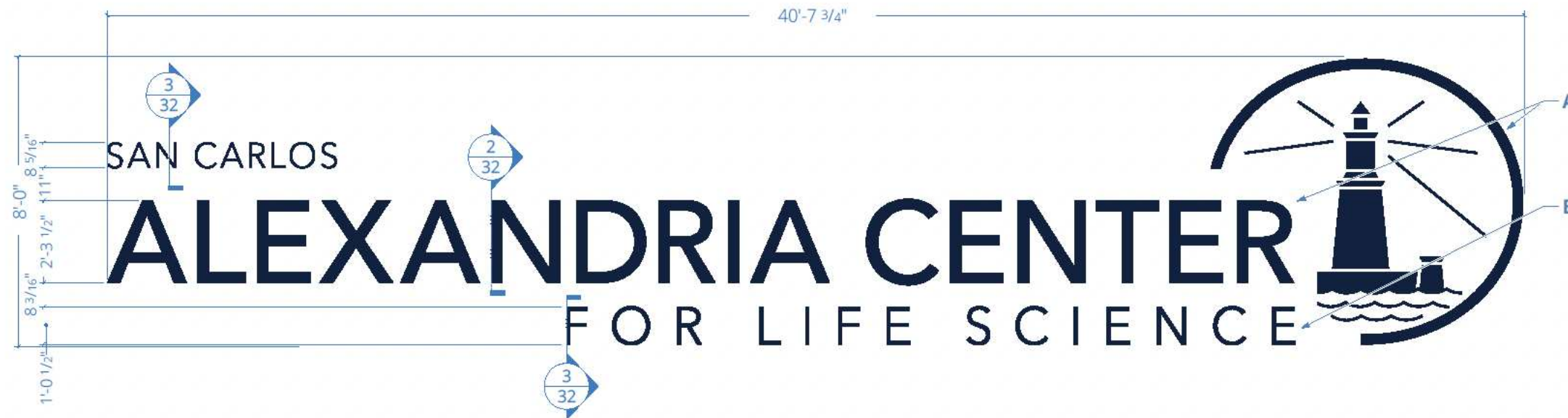
1 **C1.01 - ELEVATION**
Scale: 1/8" = 1' - 0"



2 **ELEVATION DETAIL**
Scale: 1/2" = 1' - 0"

DESCRIPTION Qty. 2

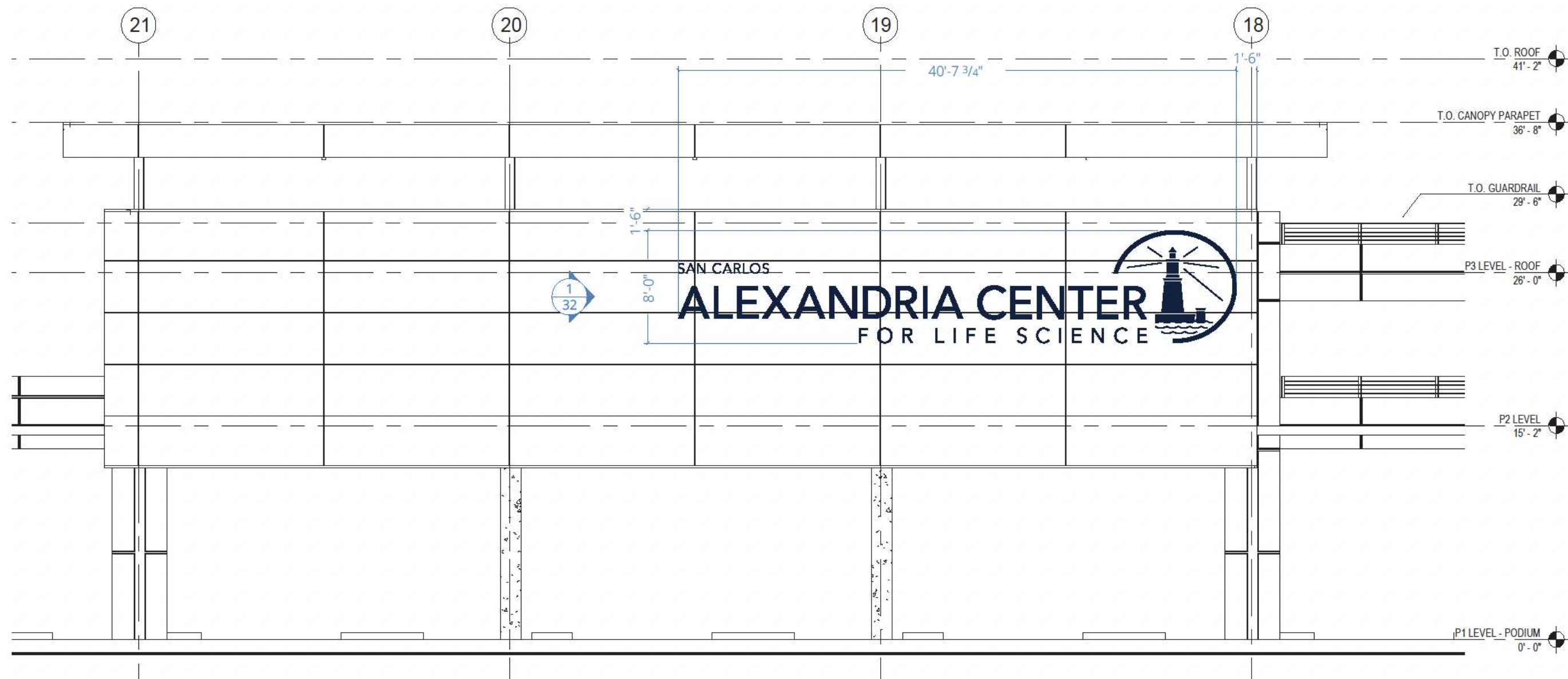
A. Number Form(s): Fab'd alum. w/ perforated returns, painted **P2** back & returns. Front face **P1** tw/ direct print facet pattern, satin clear coat all faces. Interior painted fluorescent white to promote light distribution w/ internal LED illumination.



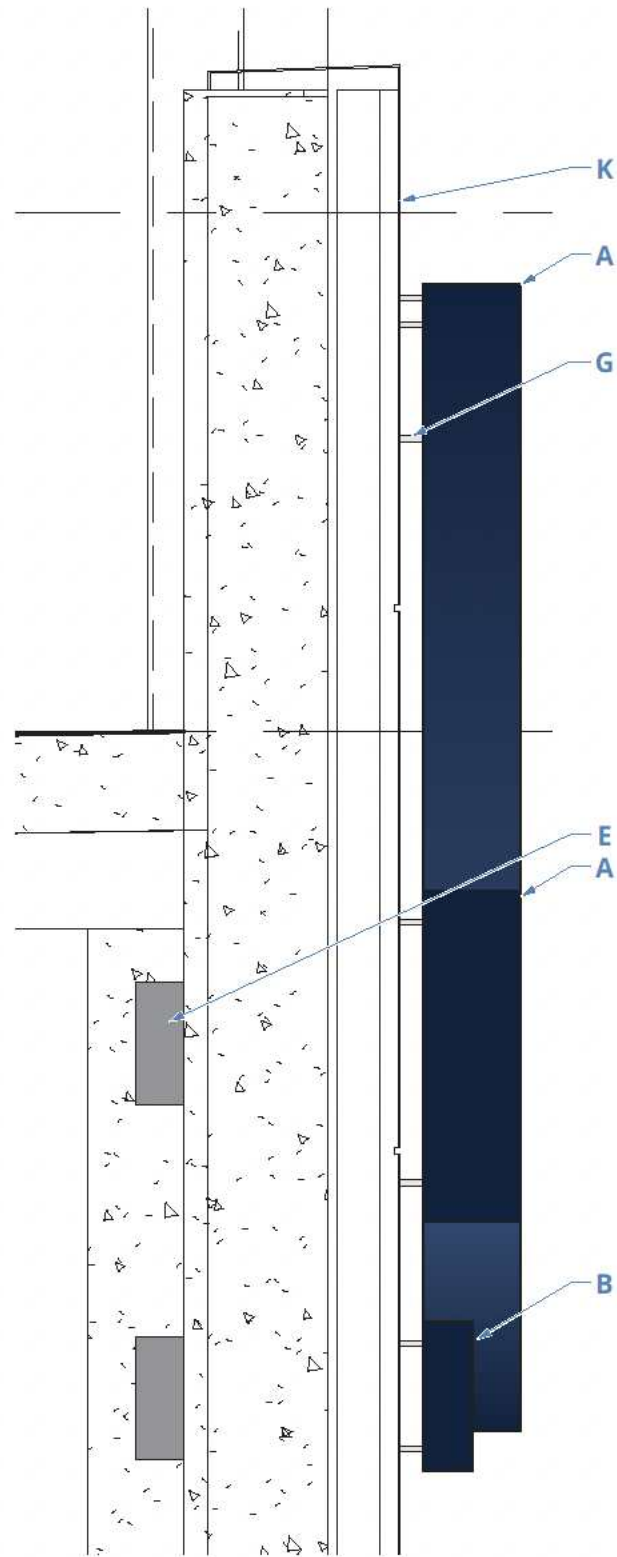
DESCRIPTION Qty. 1

- A. Letter & Logo Forms: 8" deep fab'd alum. channel form, painted P1 face & returns. LED halo illumination.
- B. Letter Forms: 4" deep fab'd alum. channel form, painted P1 face & returns. LED halo illumination.

2 ELEVATION
Scale: 1/4" = 1' - 0"



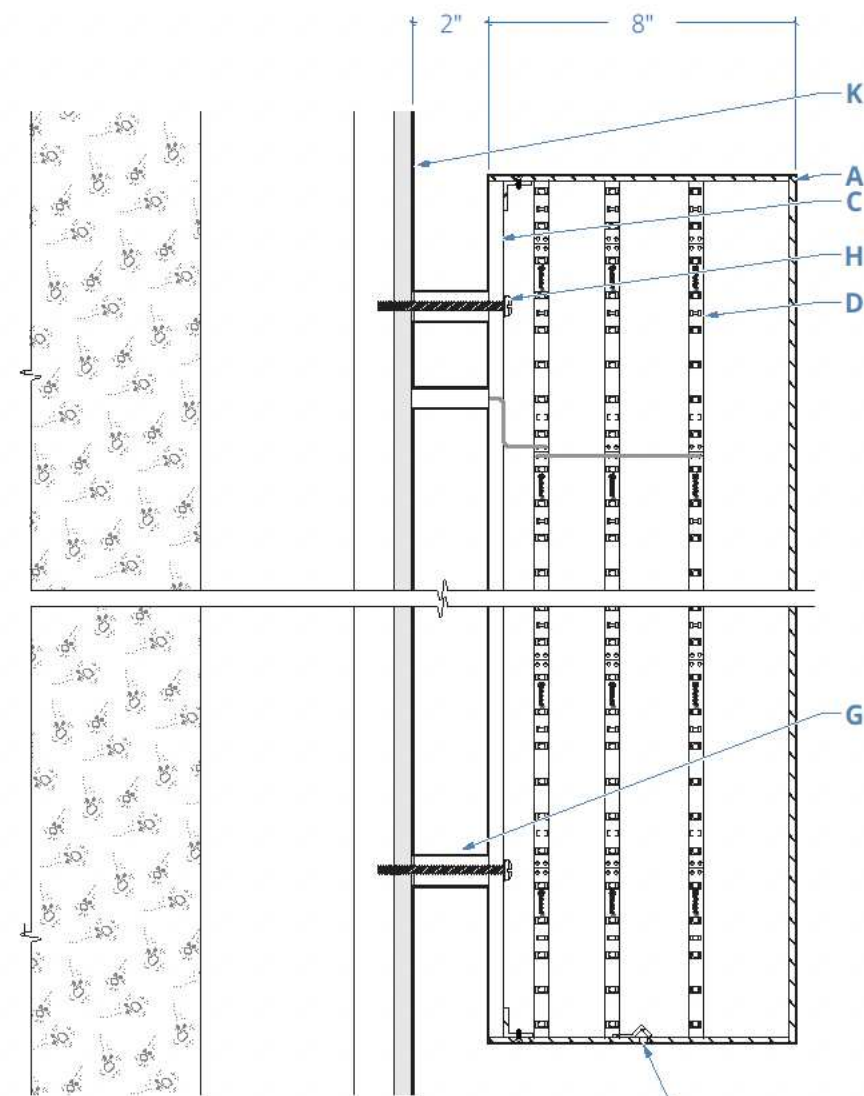
1 PLACEMENT ELEVATION
Scale: 1/8" = 1' - 0"



1

END VIEW

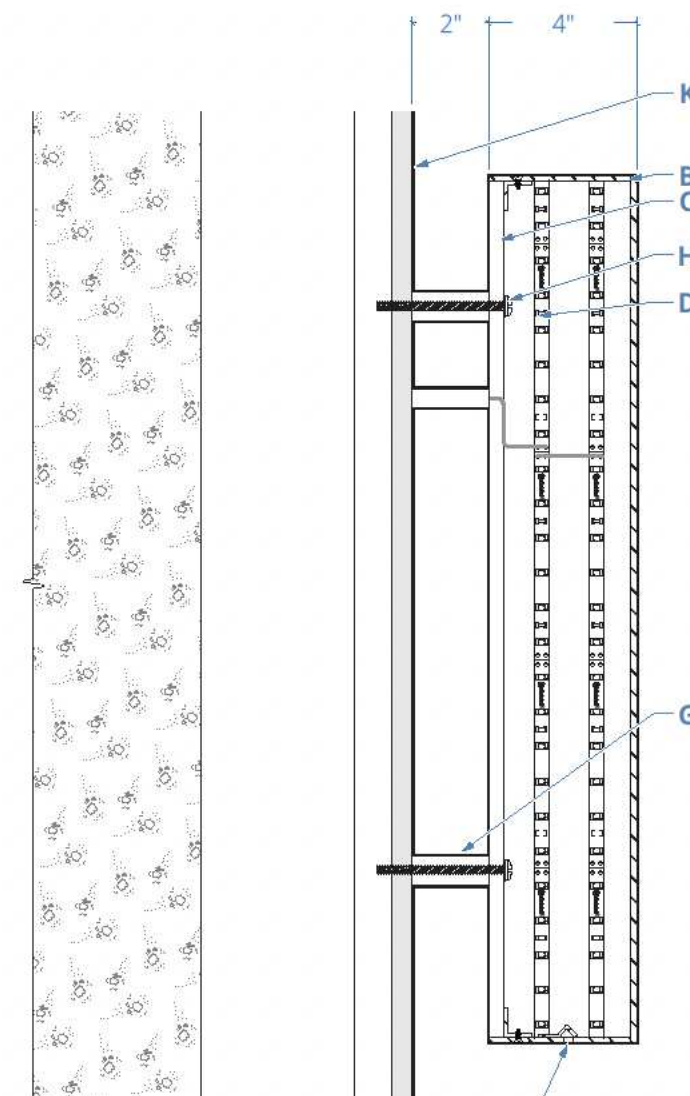
Scale: 3/4" = 1' - 0"



2

SECTION DETAIL

Scale: 1:5



3

SECTION DETAIL

Scale: 1:5

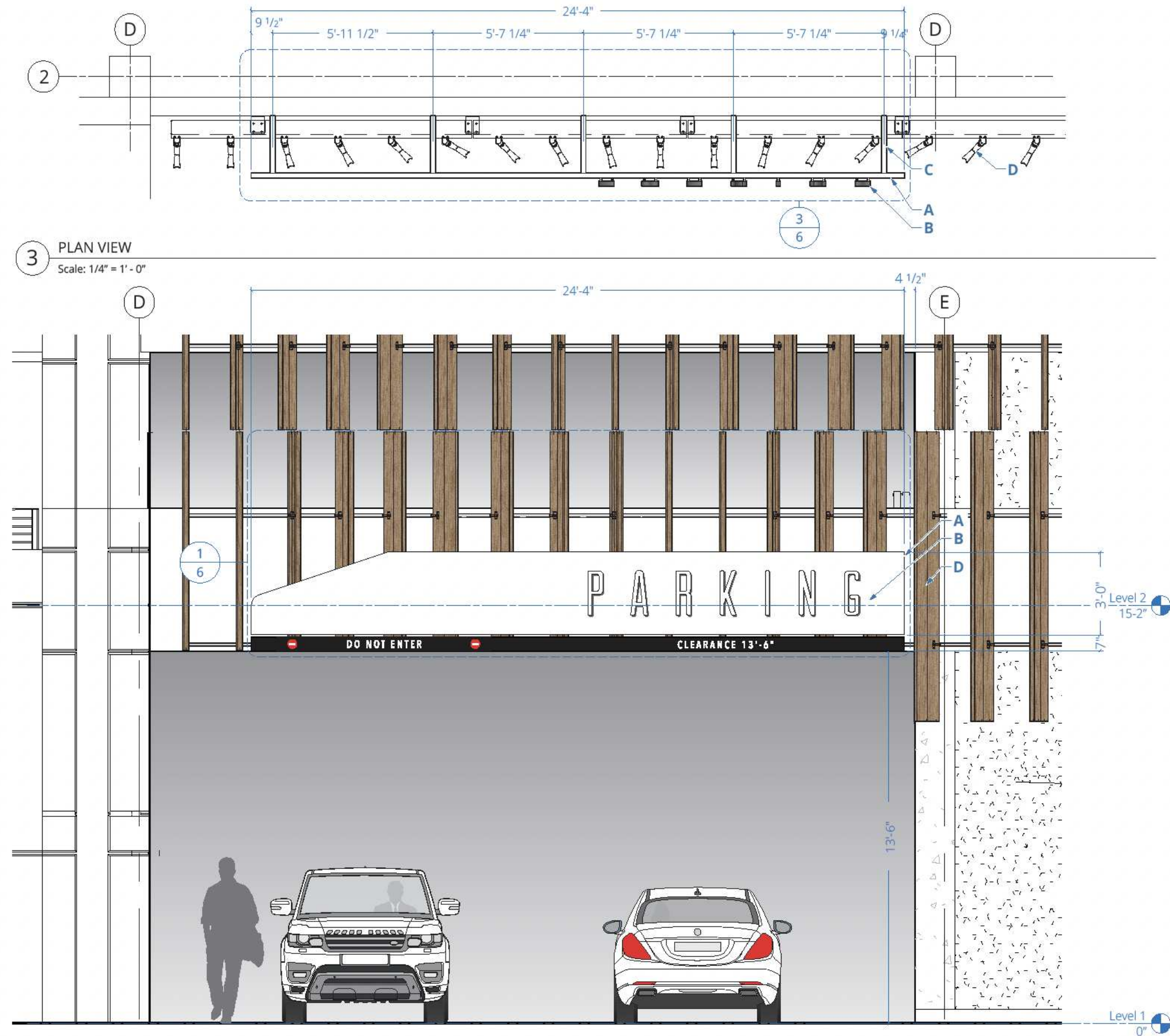
DESCRIPTION

- A. Letter & Logo Forms: 8" deep fab'd alum. channel form, painted P1 face & returns. LED halo illumination.
- B. Letter Forms: 4" deep fab'd alum. channel form, painted P1 face & returns. LED halo illumination
- C. Lens: 3/16" thk. translucent white lexan face.
- D. Illumination: MAXBrite 12v cool white 6000k LED tape applied to inside returns.
- E. Raceway: Fab'd alum. 3" sq. x .090" thk. continuous electrical raceway fastend to backside of Support Frame painted P2 all surfaces.
- F. Power Supply: MAXBrite MDS27760-12 MultiDrive Series 60W LED power supply concealed in raceway(s).
- G. Standoff(s): 3/4" Ø alum. tubes , painted to match bldg. ACM panel.
- H. Mounting Hardware: 1/4" Ø S/S bolts mech. fasten to Lens, drill & tap into alum. bldg. panel.
- J. Primary Power: 110/270v switch circuit brought through mullion system to location by GC. Provide 5' whip.
- K. (e) Alum. Bldg. Panel

NOTES:

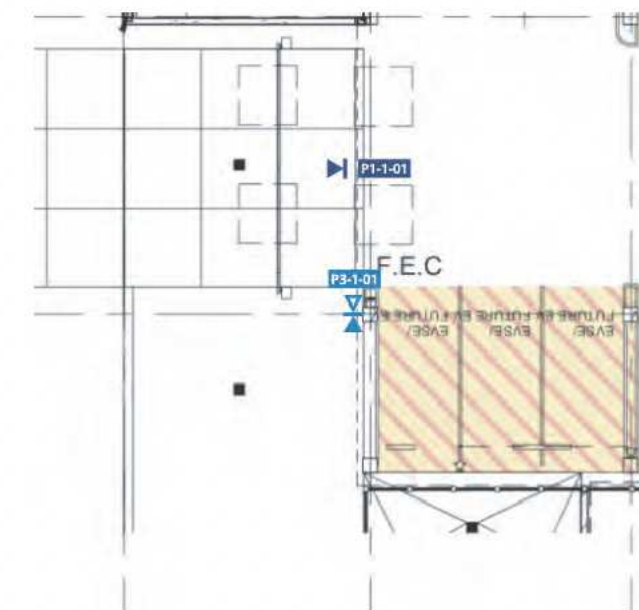
This sign is intended to be installed in accordance with the requirements of Article 600 of the National Electrical Code and/or other applicable codes. This includes proper grounding and bonding of sign(s).

Sign to be UL listed.



DESCRIPTION

- A. Cabinet:** Fab'd alum. 2" deep box w/ 1/8" thk. face, .090" thk returns on alum. angel frame, painted **P1** all faces. alum.
 - B. Letterforms:** Fab'd alum. 2" deep, LED halo-illuminated, painted **P1** face, **P2** returns, w/ 1-5/8" standoff.
 - C. Armature(s):** HHS 2" sq. x .3125" thk. STL. tube(s), painted **P1** all visible faces.
 - D. (e) Bldg. Louvers System:** verify location in field prior to sign fabrication.
- NOTES: See subsequent sheets for additional details & specifications.



1 P1-L1-01 BUILDING PARKING ID, NORTH ELEVATION
Scale: 1/4" = 1' - 0"

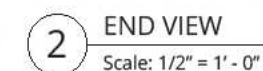
2 LOCATION DETAIL
Scale: NTS



- A. Cabinet:** Fab'd alum. 2" deep box w/ 1/8" thk. face, .090" thk returns on alum. angel frame, all seams to be welded, ground & sanded smooth, painted **P1** all faces. alum.
- B. Letterforms:** Fab'd alum. 2" deep, LED halo-illuminated, painted **P1** face, **P2** returns,
- C. Standoff:** 1/2" Ø x 1-5/8" alum. tube, painted **P1**.
- D. Armature(s):** HHS 2" sq. x .3125" thk. STL. tube(s), painted **P1** all visible faces.
- E. Attachment:** HHS 2" sq. x .3125" thk. STL. angle(s) welded to Armature, painted **P1** all visible faces.
- F. (e) Bldg. Louvers System:** verify location in field prior to sign fabrication.

NOTES: See subsequent sheets for additional details & specifications.
Shim w/ S/S btwn. dissimilar metals to prevent galvanic corrosion.

3 PLAN VIEW
Scale: $1/2" = 1' - 0"$



1 P1-L1-01 BUILDING PARKING ID, NORTH ELEVATION
Scale: 1/2" = 1' - 0"