

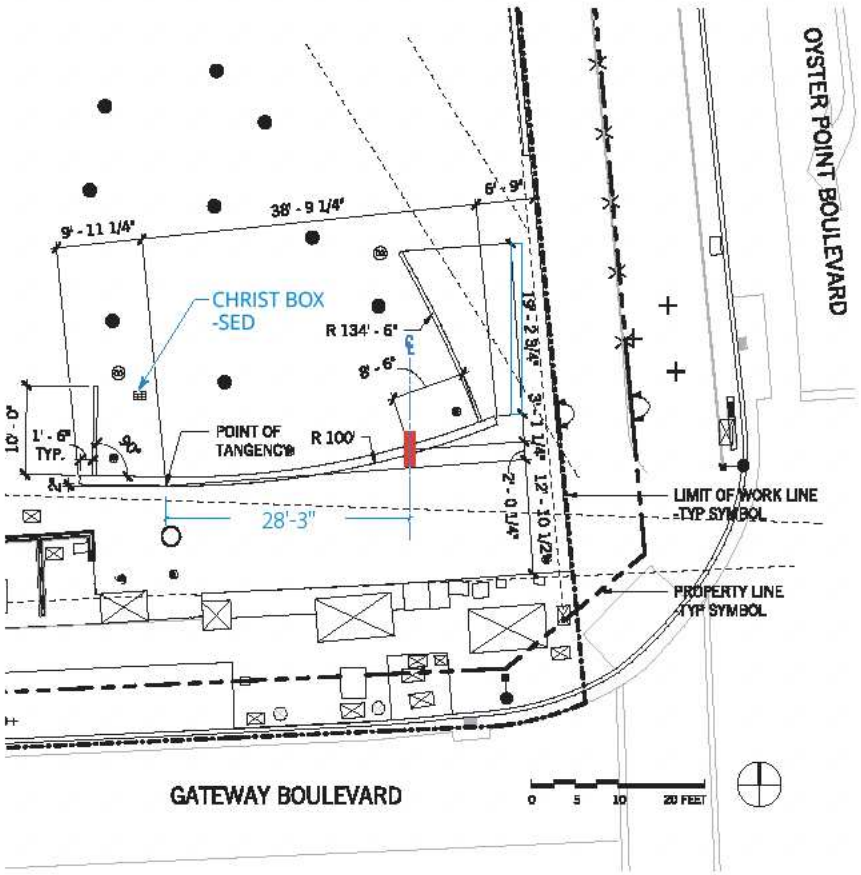


LEGEND

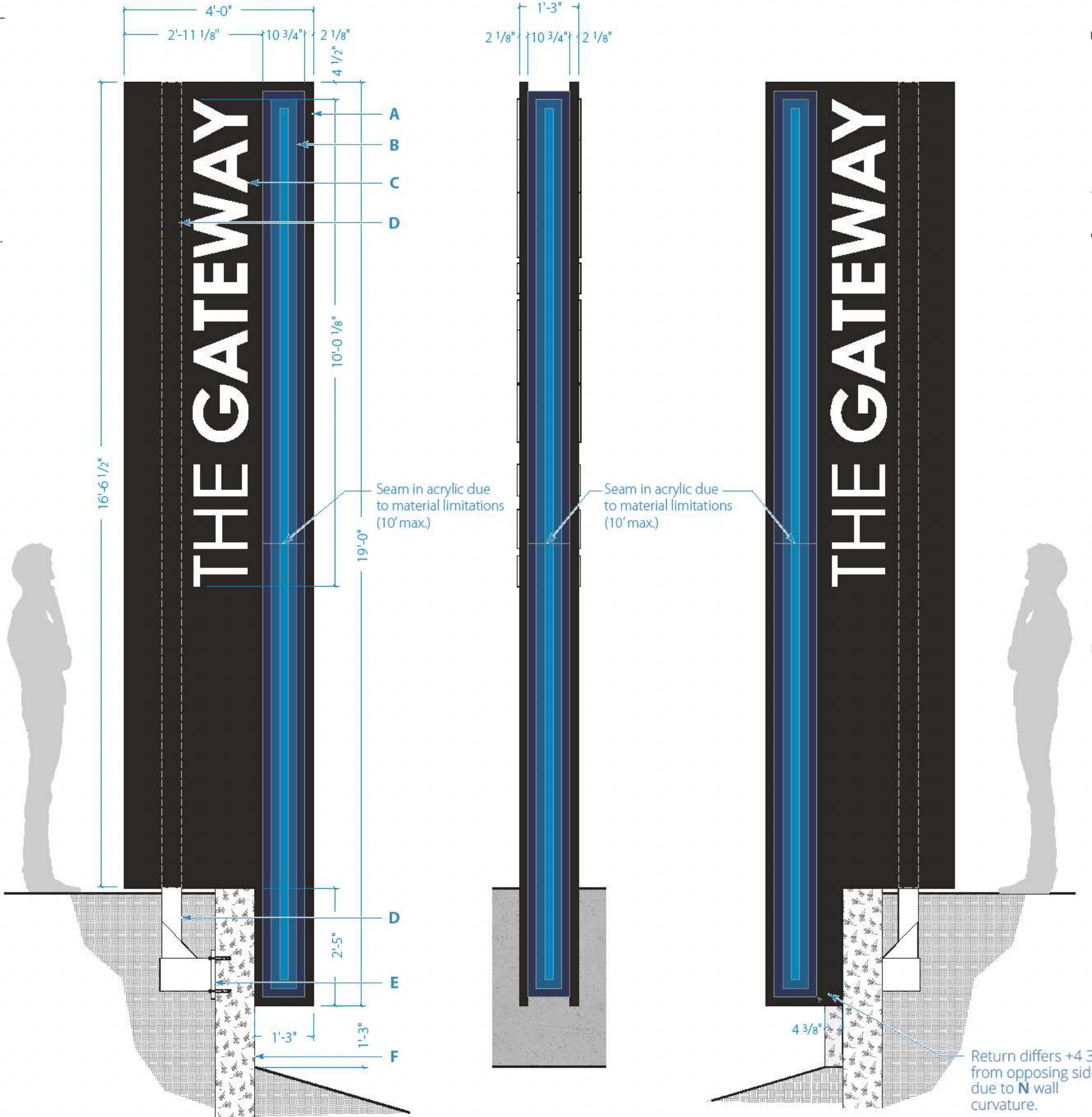
Qty. 1

- A. Cabinet:** Fab'd alum. on structural alum. frame, finished smooth & painted. Internally illuminated. Double faced.
- B. Luminaire(s):** Comprised of: 1" x 1 1/2" painted Dk. Blue alum tube perimeter, pin mounted to 1" thk. white acrylic w/ Med. Blue translucent vinyl face & returns & LED illum. embed modules 2nd surface, center routed out to expose & glued to 1/8" thk. white acrylic painted Lt. Blue.
- C. Project Name:** 1/2" push thru proud translucent white acrylic, illuminated.
- D. Support Tube:** 5" sq. structural alum. vertical tube welded to .375" thk. x 8" sq. x 13" wide alum. armature (as shown) w/ (2) two .5" x 9" gussets.

- E. Base Plate(s):** 1" thk. x 12" x 24 alum. plate welded to C.
- F. Retaining Wall:** .(e) Existing
- NOTES: See subsequent page(s) for additional information, specifications & engineering at the end of this document.
- This sign is intended to be installed in accordance with the requirements of Article 600 of the National Electrical and/or other applicable local codes. This includes proper grounding and bonding of the sign.



1 A1 PRIMARY MONUMENT LOCATION PLAN
Scale: NTS



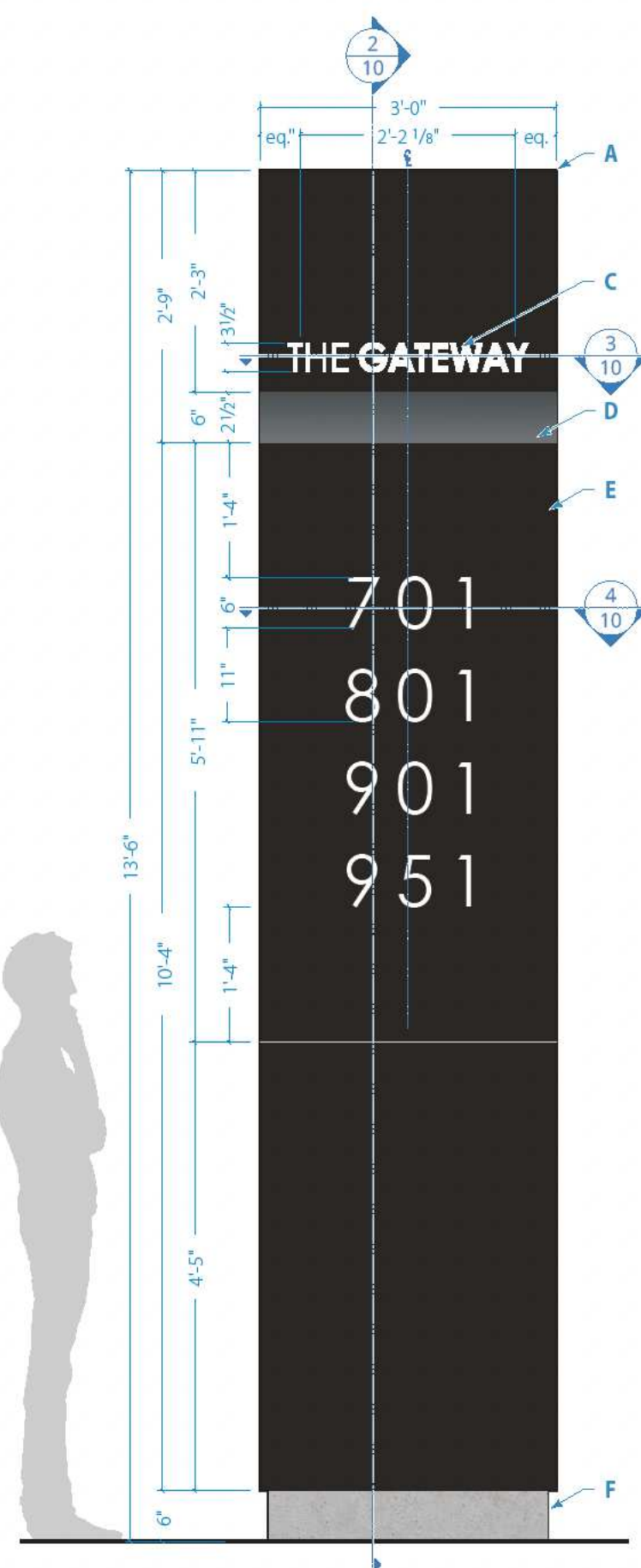
2 A1 ELEVATION
Scale: 1:25

3 END VIEW
Scale: NTS

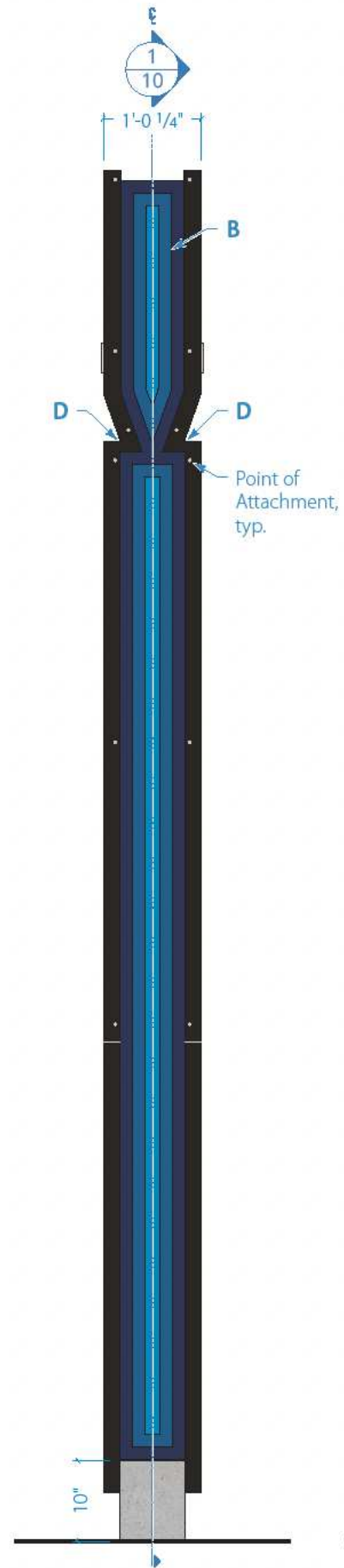
4 ELEVATION
Scale: NTS



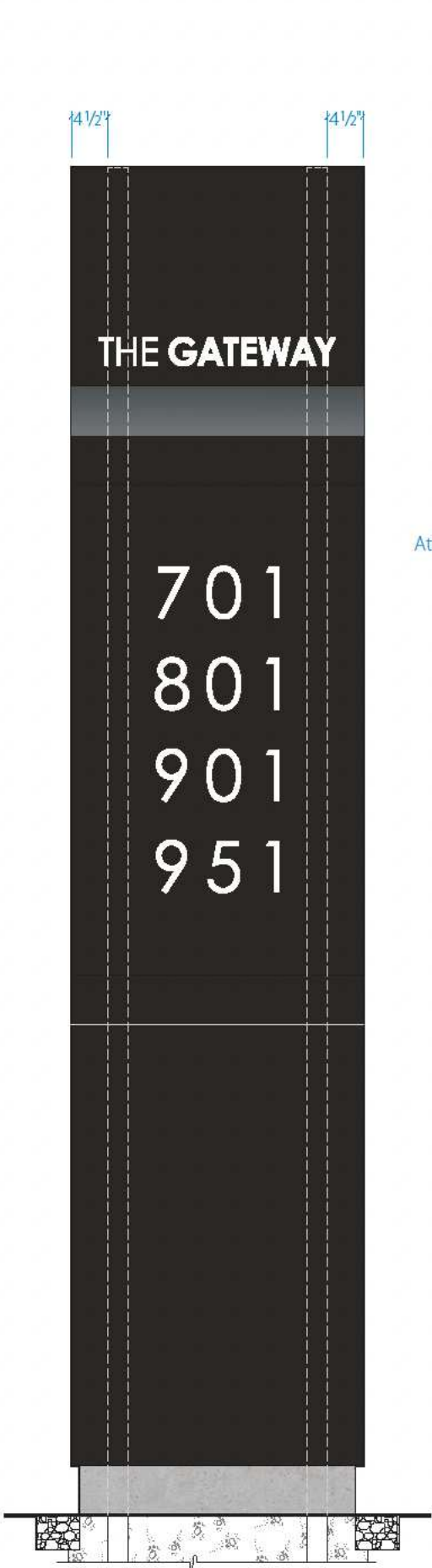
- This sign is intended to be installed in accordance with the requirements of Article 600 of the National Electrical and/or other applicable local codes. This includes proper grounding and bonding of the sign.



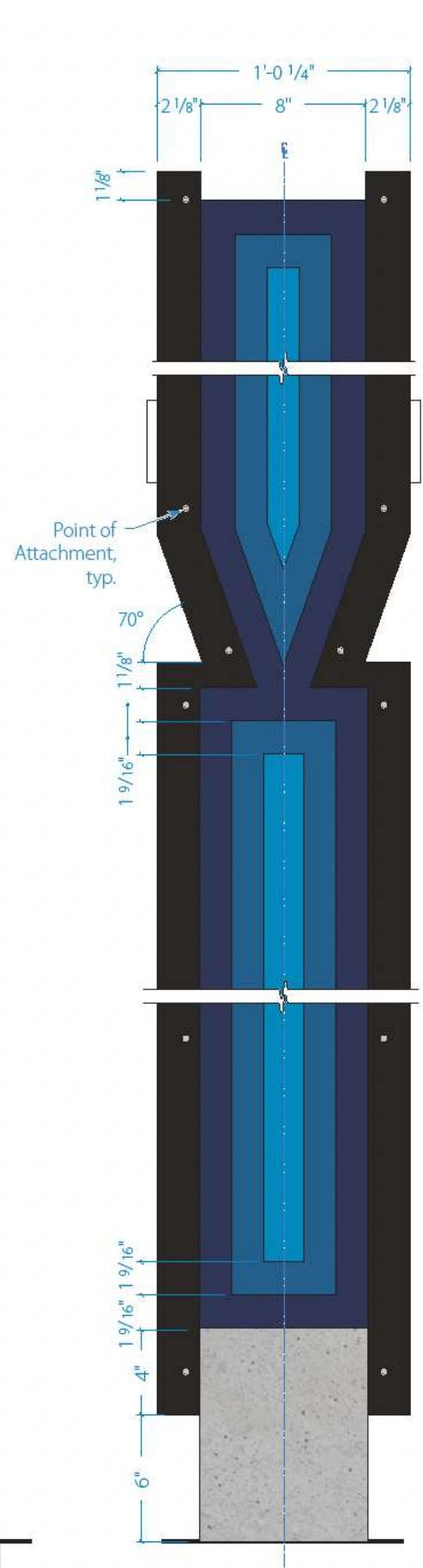
1 **A2 BUILDING ADDRESS PYLON ELEVATION**
Scale: 1:20



2 **SIDE VIEW**
Scale: 1:20



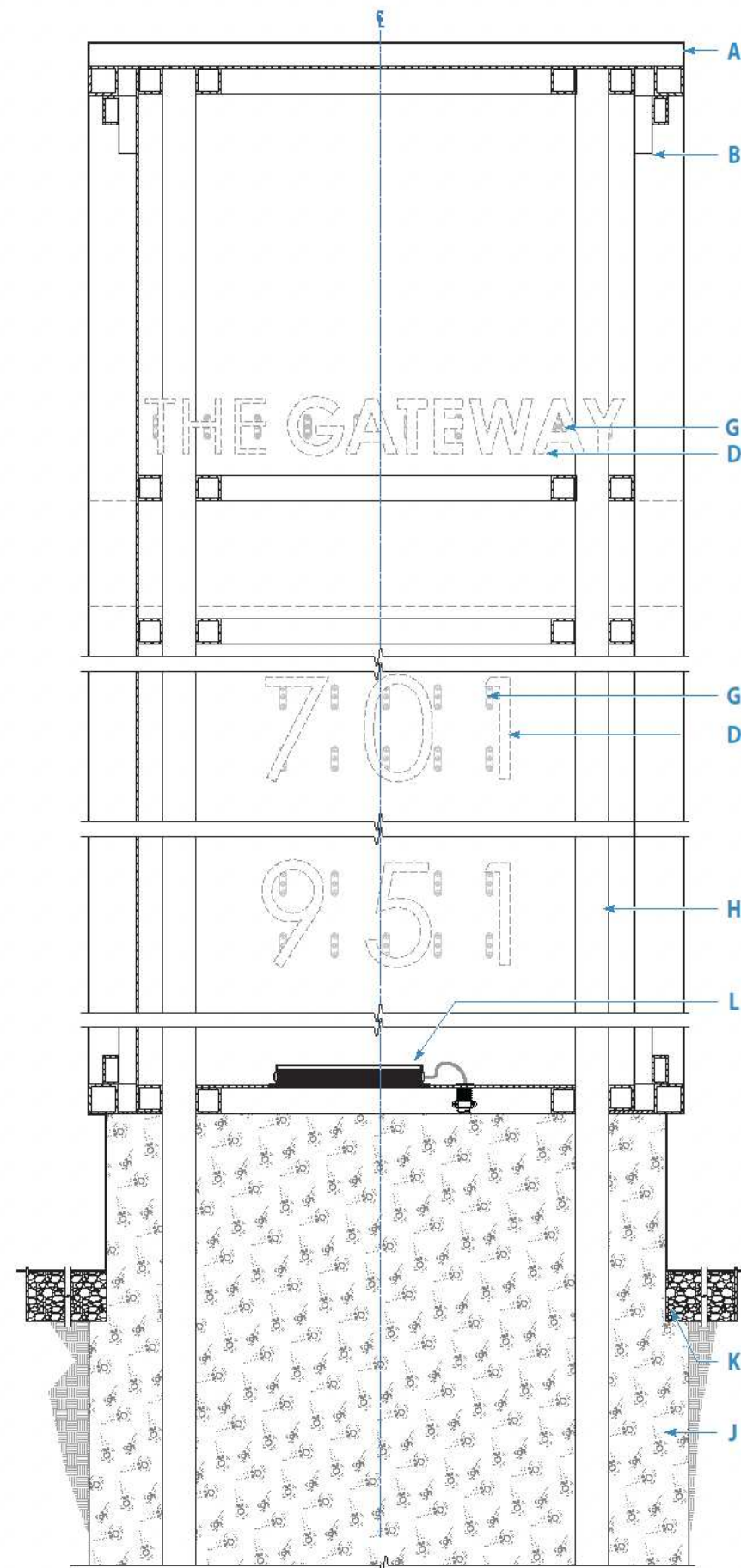
3 **BACK ELEVATION**
Scale: 1:20



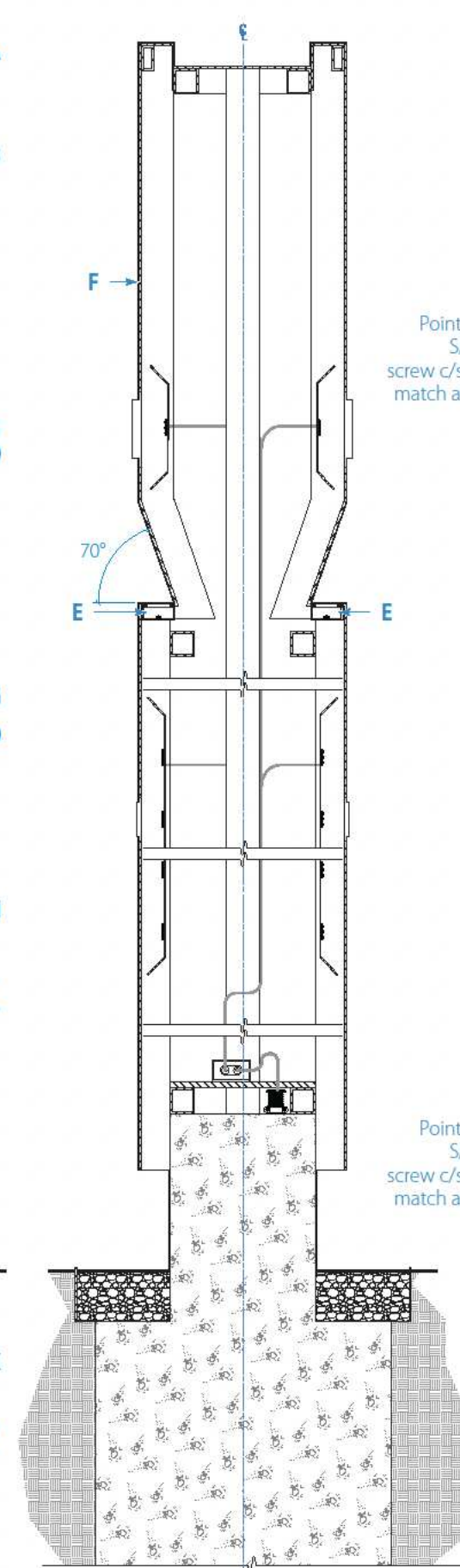
4 **DETAIL**
Scale: 1 1/2" = 1'-0"

- A. Cabinet:** Fab'd alum. on structural alum. frame, finished smooth & painted **P1**. Internally illuminated. Double faced.
- B. Luminaire(s):** Comprised of: 1" x 1 1/2" painted **Dk. Blue** alum tube perimeter, pin mounted to 1" thk. white acrylic w/ **Med. Blue** translucent vinyl face & returns & LED illum. embed modules 2nd surface, center routed out to expose & glued to 1/8" thk. white acrylic painted **Lt. Blue**.
- C. Logo:** 1/2" push thru proud translucent white acrylic, illuminated (see notes).
Address: Push thru flush to face translucent white acrylic (see notes).
- D. Uplight:** Integrated LED 6000k stip lighting w/ 3/16" thk. frosted plex lens dadded to fit flush & sealed to return face to illum. angle.
- E. Address Panel:** Fab'd. 1/8" thk. alum. sheet, finished smooth & painted. Addresses 1/4" thk. translucent white acrylic push thru flush. illuminated (see notes). Mech. fasten to **A** @ return.
- F. Base:** Foundation plynth above ground, natural gray, smooth finish, no exposed aggregate..

NOTES:
All push-thru letters & respective alum. face panels to be water-jet cut to provide for sharp inside corners to maintain font integrity.
See subsequent page(s) for additional information, specifications & engineering at the end of this document.
This sign is intended to be installed in accordance with the requirements of Article 600 of the National Electrical and/or other applicable local codes. This includes proper grounding and bonding of the sign.



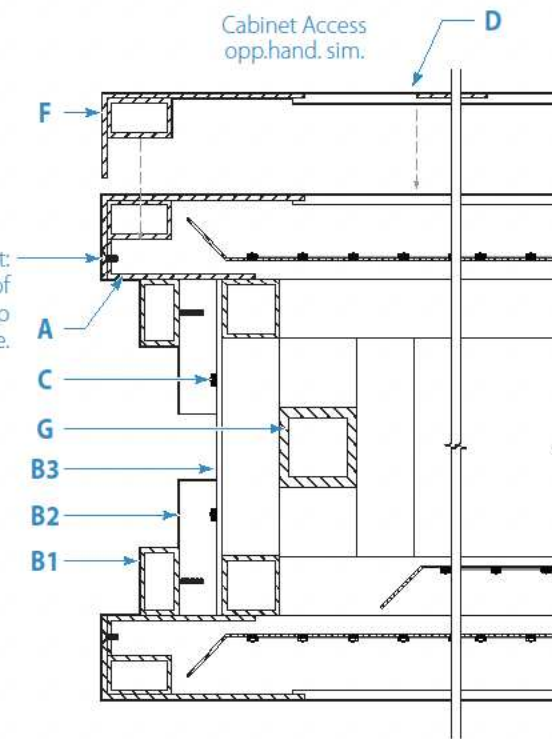
1 **A2 SECTION**
Scale: 1:10



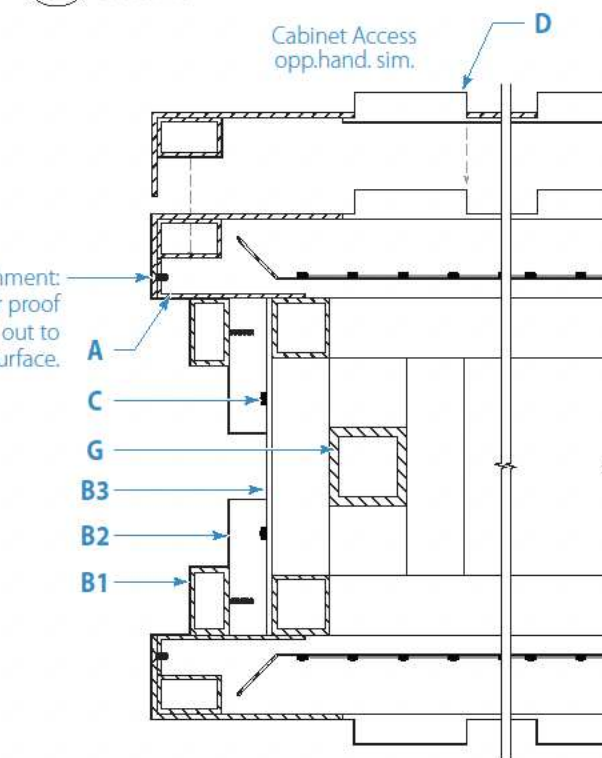
2 **SECTION**
Scale: 1:10

Point of Attachment:
S/S tamper proof
screw c/s, painted out to
match adjacent surface.

4 **SECTION ADDRESS PANEL**
Scale: 1:5



Point of Attachment:
S/S tamper proof
screw c/s, painted out to
match adjacent surface.



3 **SECTION LOGO**
Scale: 1:5

LEGEND

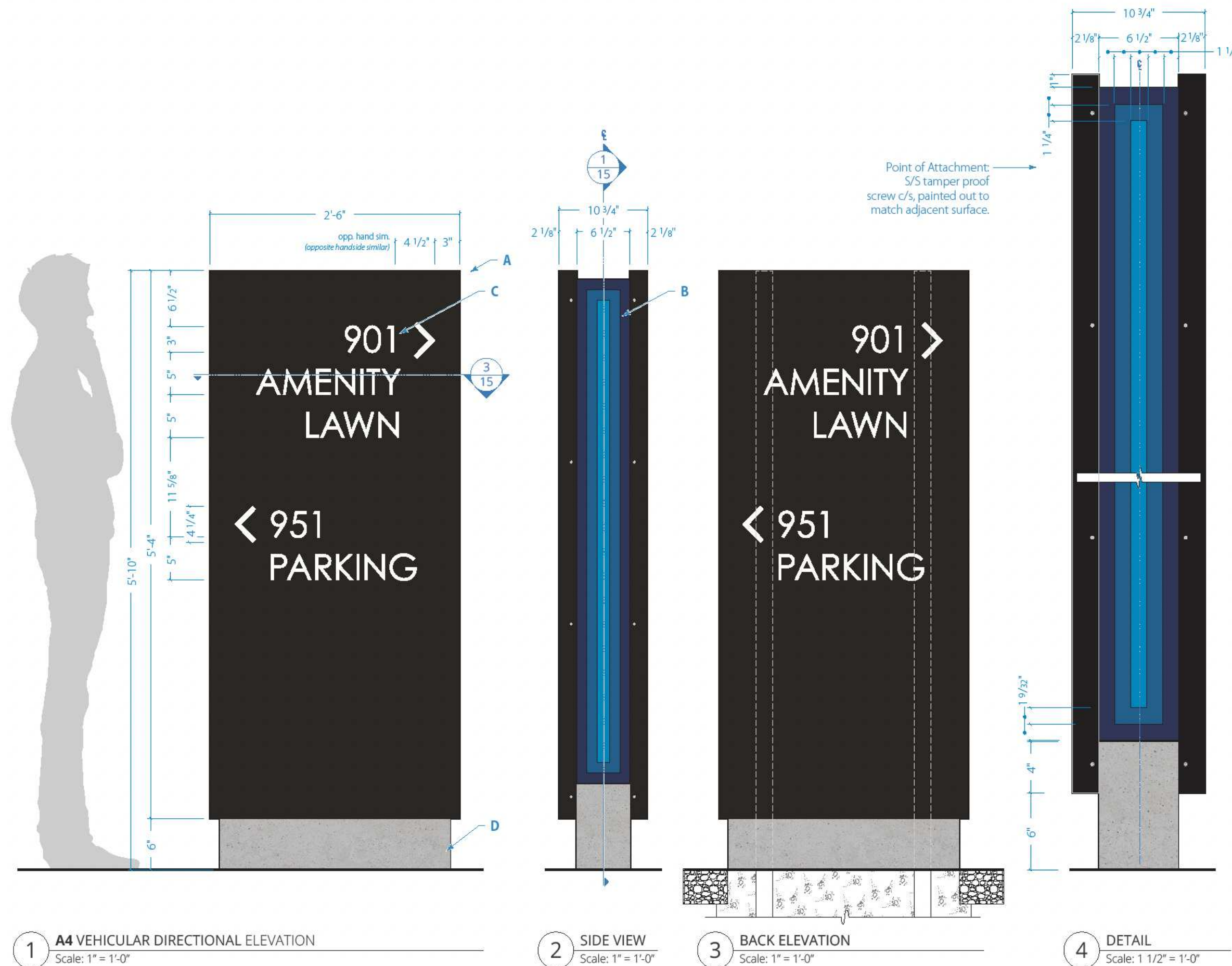
- A. Cabinet:** Fab'd alum. on structural alum. tube frame w/ 1/8" thk. alum skin,, finished smooth & painted. Internally illuminated. Double faced.
- B. Luminaire(s):** Comprised of: **B1** 1" x 1 1/2" painted **Dk. Blue** alum tube perimeter , pin mounted to **B2** 1" thk. white acrylic w/ **Med. Blue** translucent vinyl face & returns & LED illum. embed modules 2nd surface, center routed out to expose & glued to **B3** 1/8" thk. white acrylic painted **Lt. Blue**.
- C. Illum:** LED embed
- D. Push-Thru Letters:**
Logo: 1/2" push thru proud translucent white acrylic (see notes).
Address: Push thru flush to face translucent white acrylic (see notes).
- E. Uplight:** Integrated LED 6000k strip lighting w/ 3/16" thk. frosted plex lens daddeod to fit flush & sealed to return face to illum. angle.
- F. Face Panel:** Fab'd. 1/8" thk. alum. sheet on .125" thk. x 3/4" x 1" alum. frame.
- G. Illum. Tray:** .090" thk. alum breakformed & fab'd. Painted fluorescent white to promote light distribution. Populated w/ LED modules 6000k for even light.
- H. Support Tubes:** .25" thk. x 2.5" sq. struct. alum. tube set in **K**.
- J. Foundation:** Engineered concrete foundation.
- K. Soft Scape Bed:** 6" footprint perimeter x 3" deep granite filled w/ 3" w alum. edging..
- L. Power Supply:** UL approved LED driver(s) as required to support illum. concealed in cabinet behind access panel. Primary power 120/270v 20a circuit w/ timer & 5' whip to location by others.

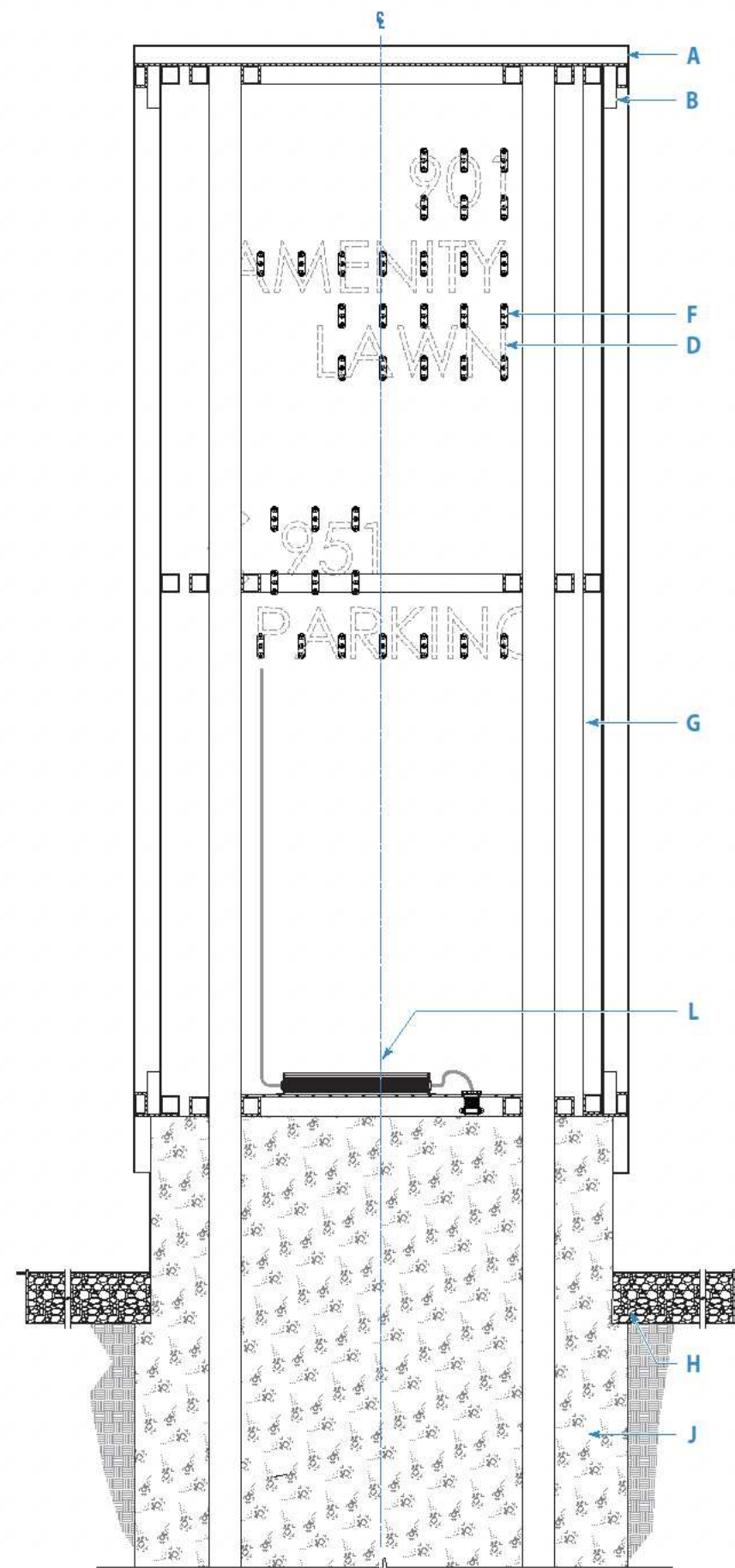
NOTES:

All push-thru letters & respective alum. face panels to be water-jet cut to provide for sharp inside corners to maintain font integrity.

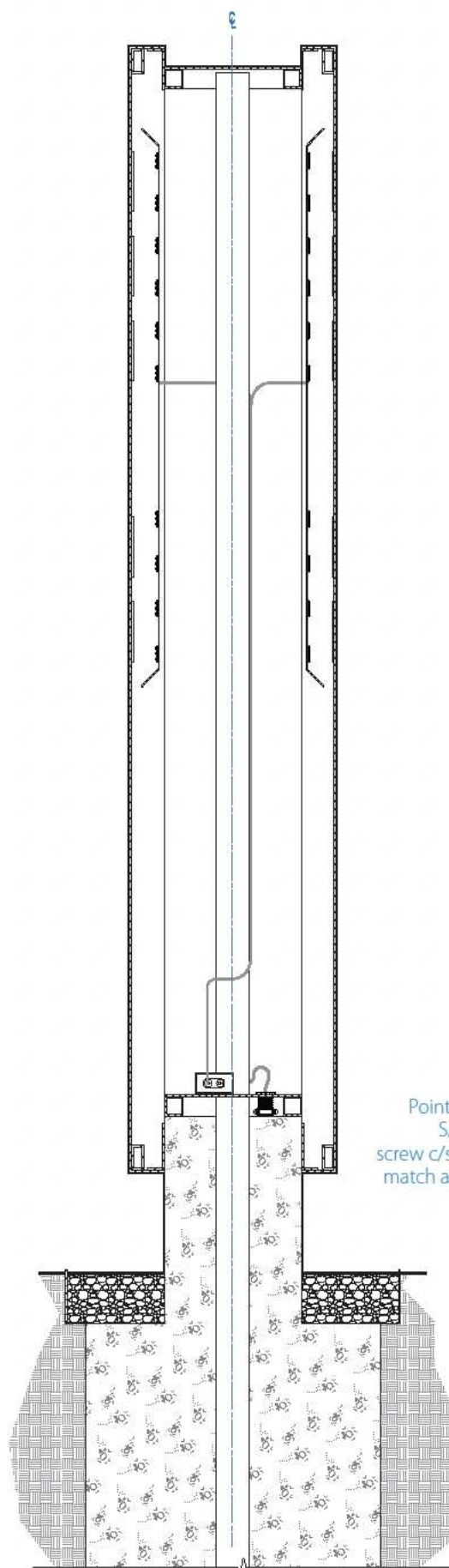
See subsequent page(s) for additional information, specifications & engineering at the end of this document.

This sign is intended to be installed in accordance with the requirements of Article 600 of the National Electrical and/or other applicable local codes. This includes proper grounding and bonding of the sign.

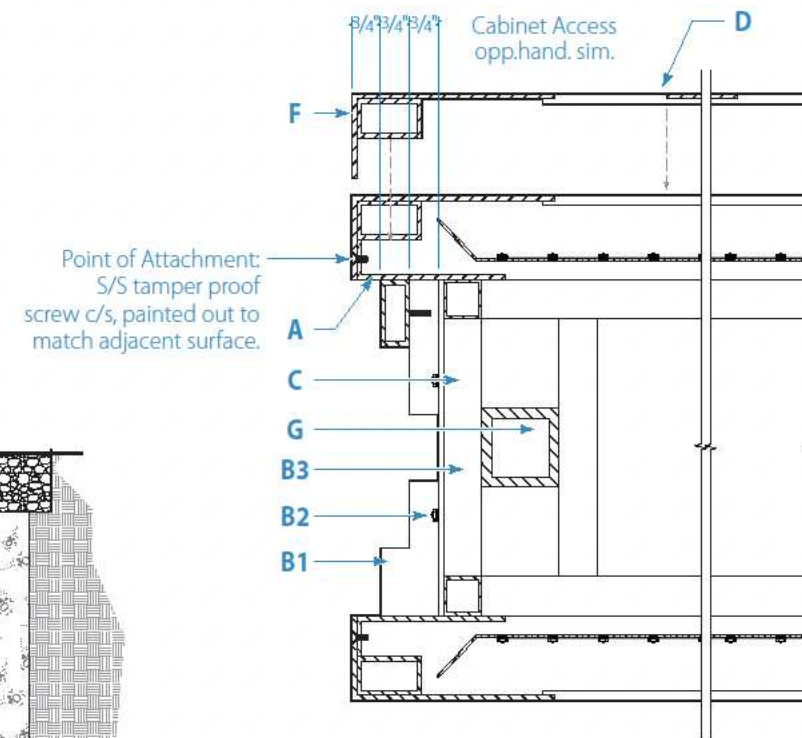




1 **A4 SECTION**
Scale: 1:10



2 **SECTION**
Scale: 1:10



3 **SECTION TENANT PANEL**
Scale: 1:5

LEGEND

- A. Cabinet:** Fab'd alum. on .125" thk. x 1" sq. alum. tube frame.
- B. Luminaire(s):** Comprised of: **B1** 3/4" x 1-1/4" painted **Dk. Blue** alum. tube perimeter, pin mounted to **B2** 3/4" thk. white acrylic w/ **Med. Blue** translucent vinyl w/ center routed out, glued to **B3** 1/8" thk. white acrylic painted **Lt. Blue**.
- C. Illum:** LED embed
- D. Message:** 1/8" push thru flush translucent white acrylic (see notes).
- E. Face Panel:** Fab'd. 1/8" thk. alum. sheet on .125" thk. x 3/4" x 1" alum. frame. Tenant Names push thru flush translucent white acrylic.
- F. Illum. Tray:** .090" thk. alum breakformed & fab'd. Painted fluorescent white to promote light distribution. Populated w/ LED modules 6000k for even light.
- G. Support Tubes:** .25" thk. x 2.5" sq. struct. alum. tube set in **J**.
- J. Foundation:** Engineered pour in place consolidated concrete f'c 2500 PSI foundation below grade.
- K. Soft Scape Bed:** 6" footprint perimeter x 3" deep granite filled w/ 3" w alum. edging..
- L. Power Supply:** UL approved LED driver(s) as required to support illum. concealed in cabinet behind access panel. Primary power 120/270v 20a circuit w/ timer & 5' whip to location by others.

NOTES:

All push-thru letters & respective alum. face panels to be water-jet cut to provide for sharp inside corners to maintain font integrity.

See subsequent page(s) for additional information, specifications & engineering at the end of this document.

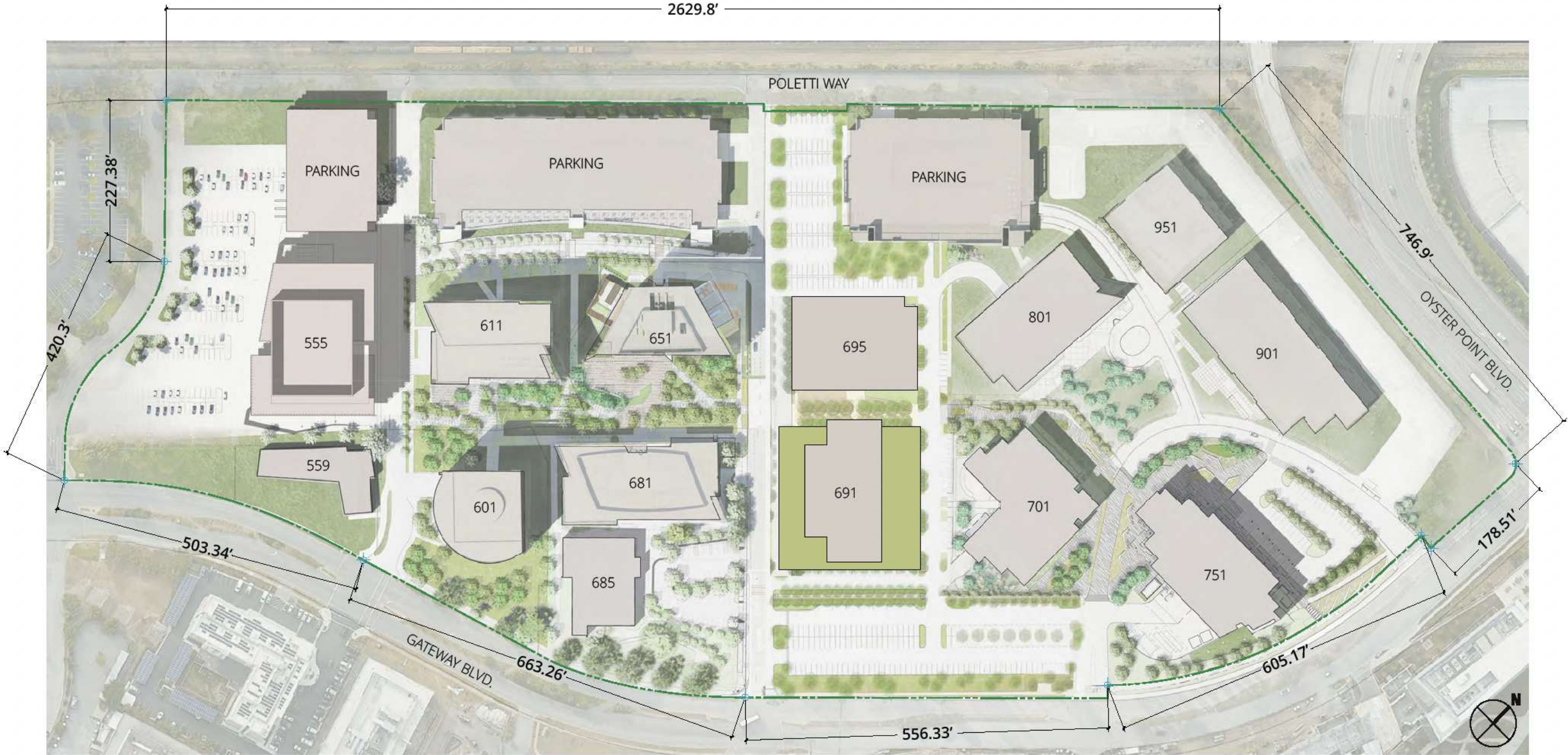
This sign is intended to be installed in accordance with the requirements of Article 600 of the National Electrical and/or other applicable local codes. This includes proper grounding and bonding of the sign.

SIGN AREA CALCULATIONS

SIGN TYPE	f²	Qty.	Sub- Ttl.f²	Monument/ Freestanding	High Rise Bldg. ID	Directional & Informational
A1 Primary Monument	76	2	exempt			
A2 Building Address Pylon	40.5	2	202.5	202.5		
A3 Tenant Listing Pylon	30	3	450	450		
A4 Vehicular Directional	14.6	7	277.4	277.4		
A5 Taxi/Rideshare ID	5.3	2	exempt			
A6 Shuttle Identity	5.3	2	exempt			
A7 Exterior Amenity ID	3.3	2	exempt			
A8 Rules & Regulations	6.9	1	exempt			
A9 Service Area Identity	6.9	1	exempt			
A10 Regulatory - Stop	2	4	exempt			

SIGN TYPE	f²	Qty.	Sub- Ttl.f²	Monument/ Freestanding	High Rise Bldg. ID	Directional & Informational
A10 Regulatory - HC Stall ID	1.25	4	exempt			
A11 Regulatory - No Trespass	2.5	3	exempt			
B1 Pedestrian Directional	8.375	2	58.625	58.625		
B2 Pedestrian Directory	18	1	72	72		
T1 Skyline Tenant ID	40	25	10,500		10,500*	
T2 Building Address	4.75	11	exempt			
P1 Parking Entry ID	9.67	6	58.02			58.02
P2 Parking Entry Pylon	12	10	120	120		
Sub-Total f²			1180.525	10,500*	58.02	
Site Acreage: 36.4			Max. f² Allowed	3840	Total f²	11,738.545

* High-Rise Building Identification Signs shall be limited to buildings of at least four stories located in the Commercial and Employment districts, as follows:
Location: Signs shall be located on the upper-most story of the building.
Sign Type: Sign to be composed of individual, internally illuminated channel letters.
Sign Qty.: Max. (1) one.



1 SITE FRONTAGE
Scale: NTS