

BRAND ARTWORK



ARROW



FONTS

**ABCDEFGHIJKLMNOPQRSTUVWXYZ**  
**abcdefghijklmnopqrstuvwxyz**  
**1234567890**

Sora Semi Bold

**ABCDEFGHIJKLMNOPQRSTUVWXYZ**  
**abcdefghijklmnopqrstuvwxyz**  
**1234567890**

Sora Medium

COLOR & MATERIAL SCHEDULE

PANTONE



Sutter Teal  
PMS 3272C



Sutter Gray  
PMS Cool  
Gray 7



Red  
PMS485C

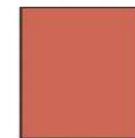
PAINTS



Sutter Teal  
MP84818



Sutter Gray  
MP 71192



Red  
MP00643



White  
MP11477



Black  
MP70431

VINYLS



Sutter Teal  
Opaque  
Miratec film  
to match  
PMS 3272C



Red  
Opaque  
3M 180-283  
Atomic Red



White  
Opaque  
3M 7725-10



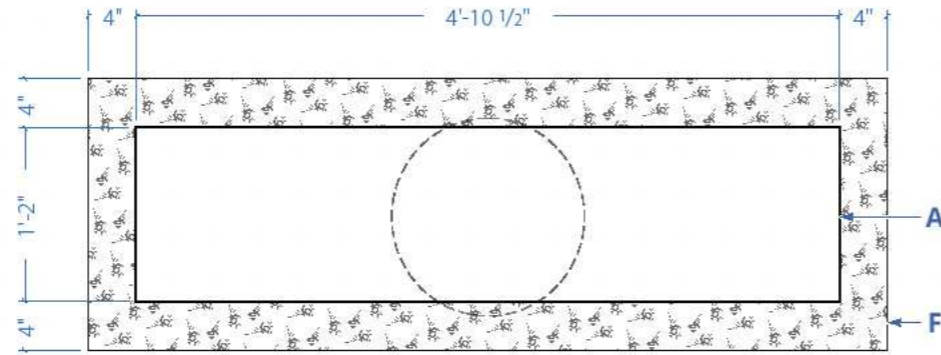
Black  
Opaque  
3M180C-12



White  
Reflective  
3M 680-10



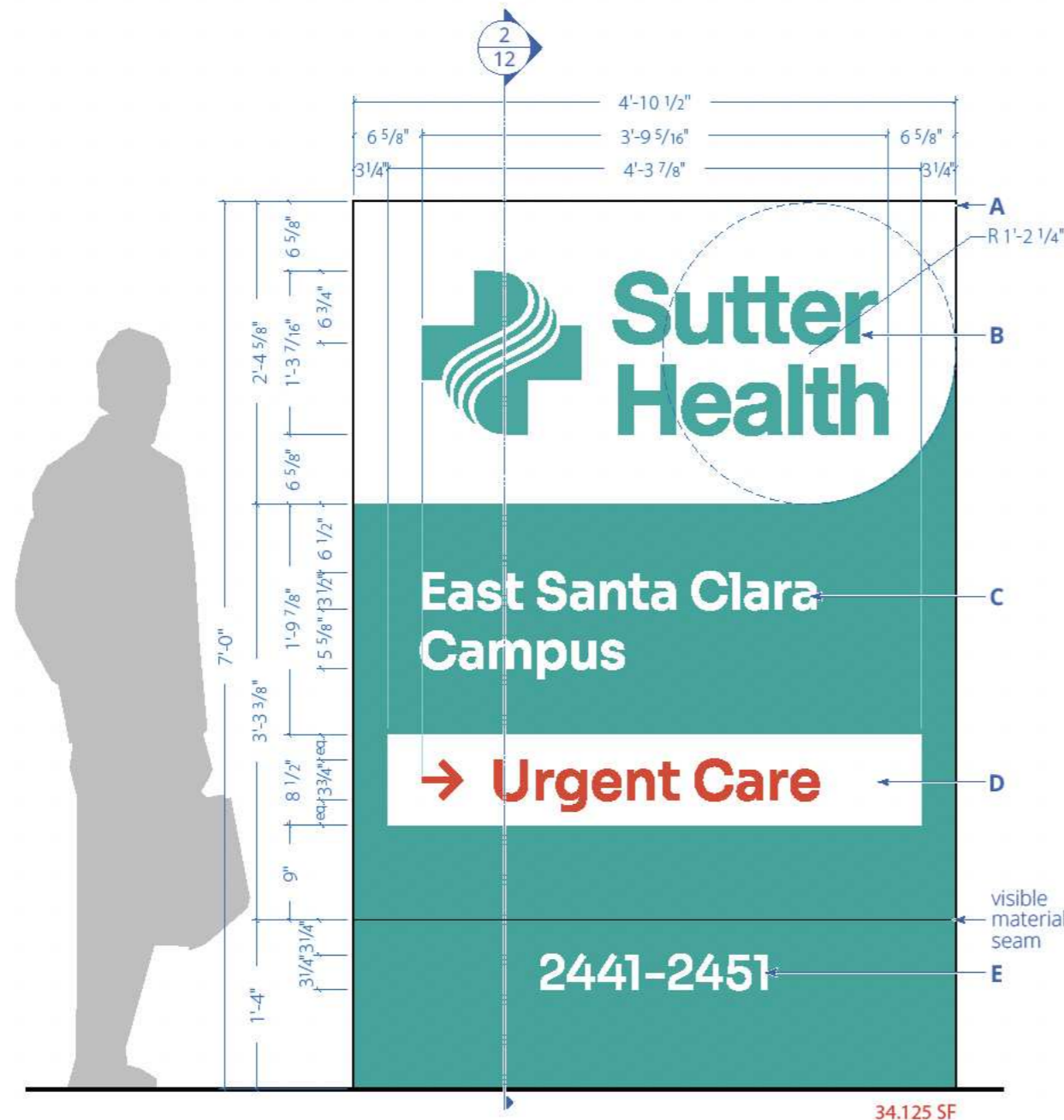
Nimbus Gray  
3M 7725-101



**4 PLAN VIEW**  
Scale: 3/4" = 1'-0"

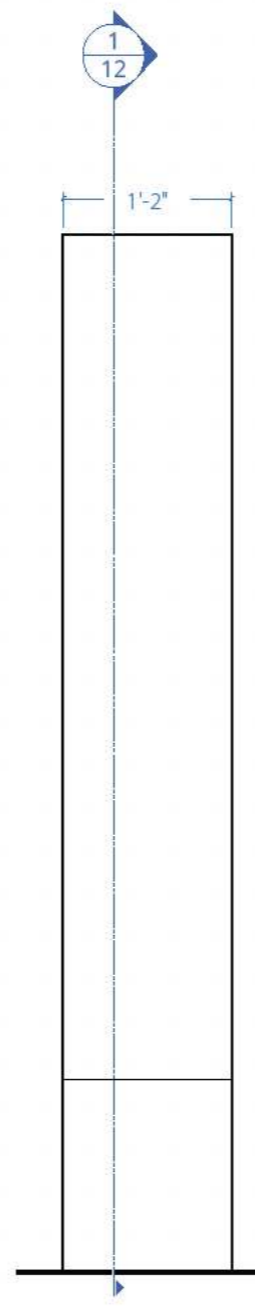
- A. Sign Cabinet:** Fab'd alum. cabinet on 2" sq. tube frame built to sleeve over 5" Ø single struct. alum. support tube set in **F**, w/ .125" thk. alum. skin, finished smooth & painted Sutter Teal & White as shown w/ semi-gloss finish.
- B. Logo:** Miratec Film digitally printed Sutter Teal contour cut vinyl w/ 3M 3660M overlamine.
- C. Message:** CNC cut White Reflective vinyl. Typeface: Sora Semi Bold.
- D. Urgent Care:** Band White Reflective vinyl w/ CNC cut Red Reflective vinyl message & arrow overlay. Typeface: Sora Semi Bold.
- E. Address:** CNC cut White Reflective vinyl. Typeface: Sora Medium.
- F. :** Engineered concrete f'c=2500psi footing w/ 4" perimeter mow strip.

NOTE: See subsequent page for additional specifications & details.



**1 S151 M2U-7-NIL CAMPUS ID SIDE A**  
Scale: 3/4" = 1'-0"

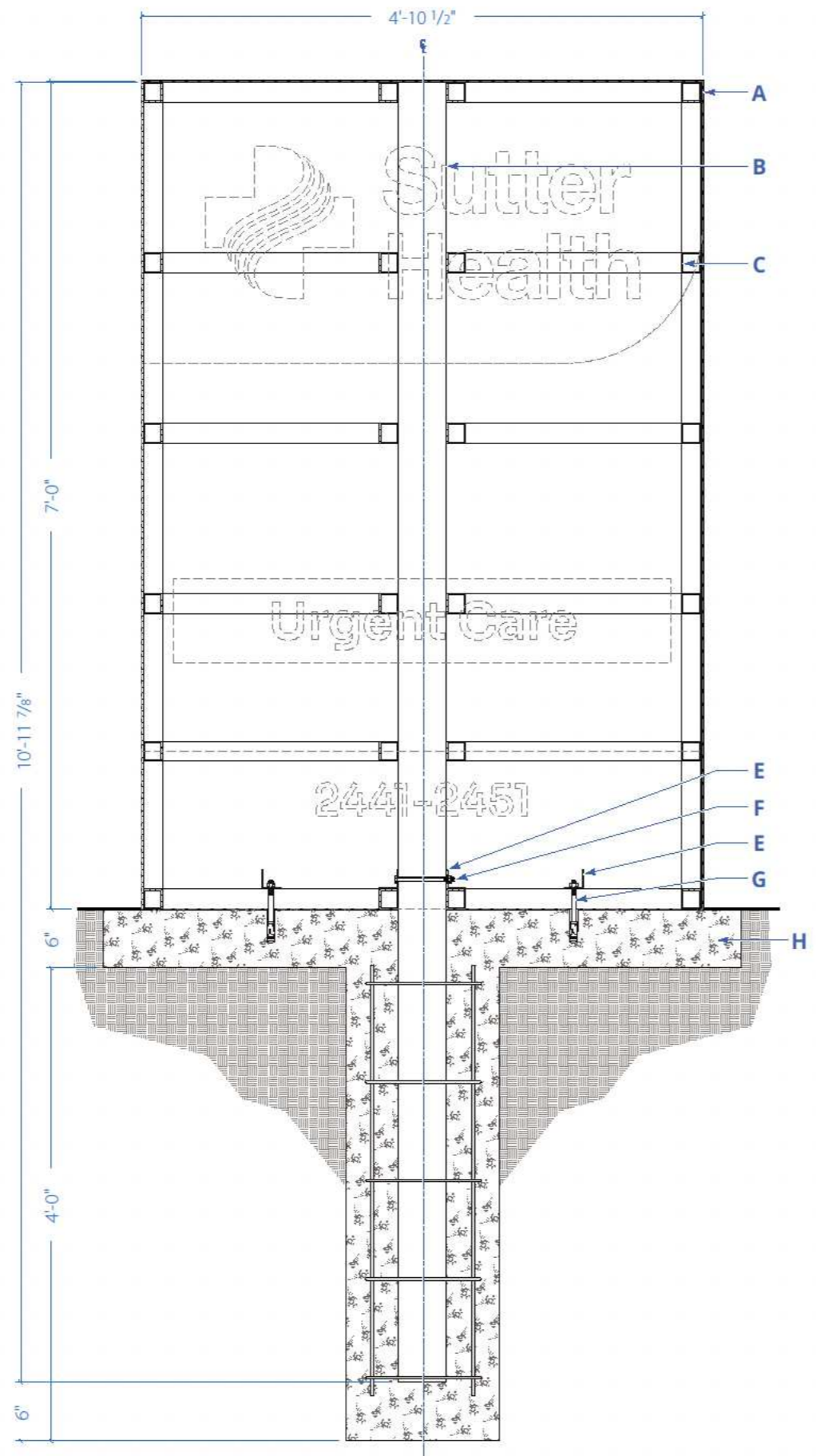
34.125 SF



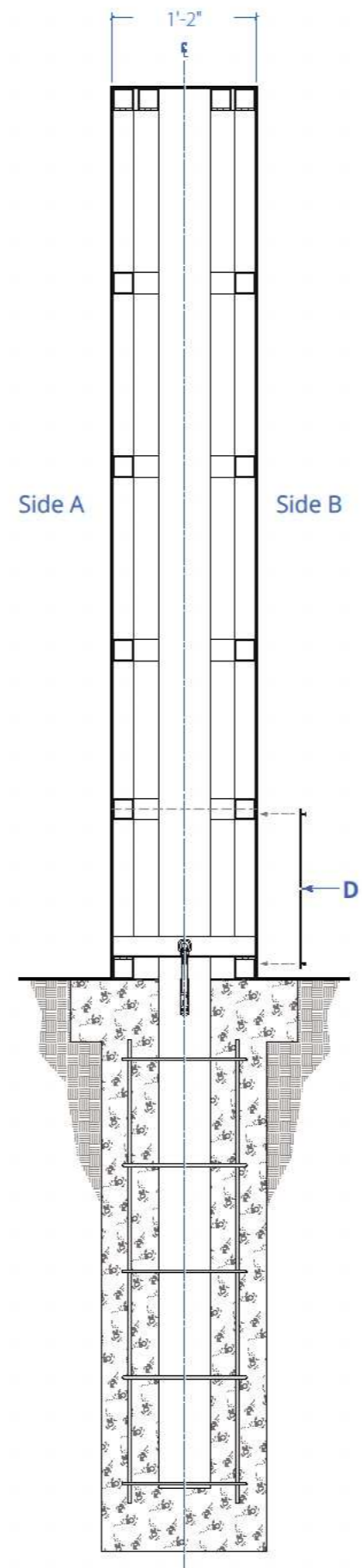
**2 SIDE VIEW**  
Scale: 3/4" = 1'-0"



**3 BACK ELEVATION SIDE B**  
Scale: 3/4" = 1'-0"

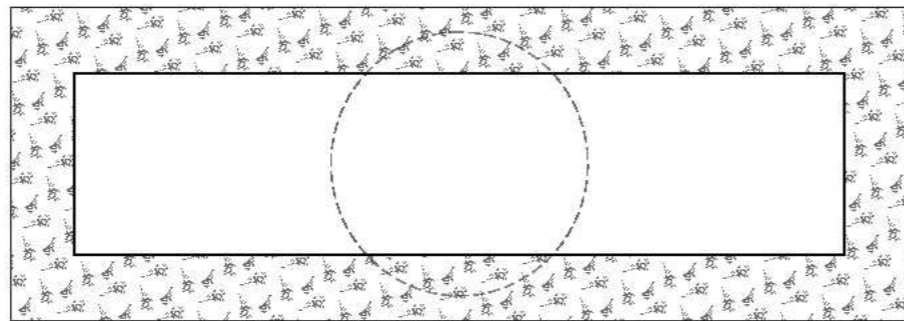


**1** M2U-7-NIL TYPICAL SECTION DETAIL  
Scale: 3/4" = 1'-0"

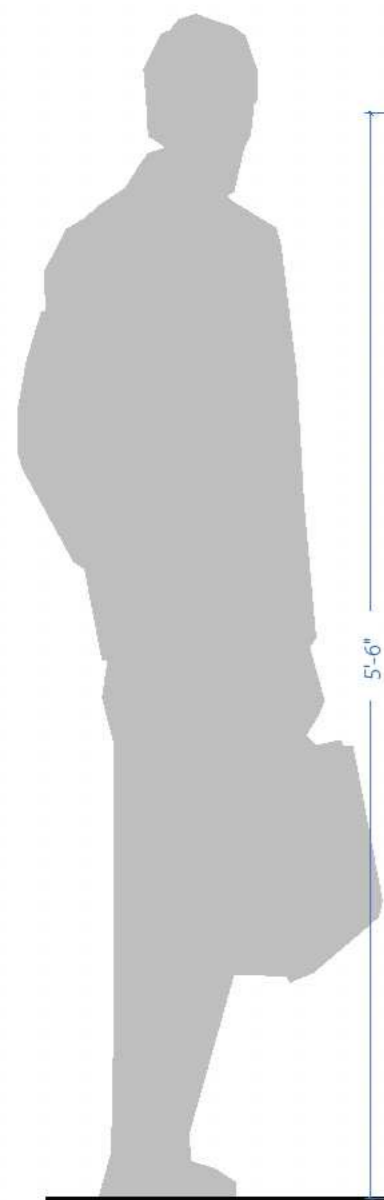


**2** TYPICAL SECTION DETAIL  
Scale: 3/4" = 1'-0"

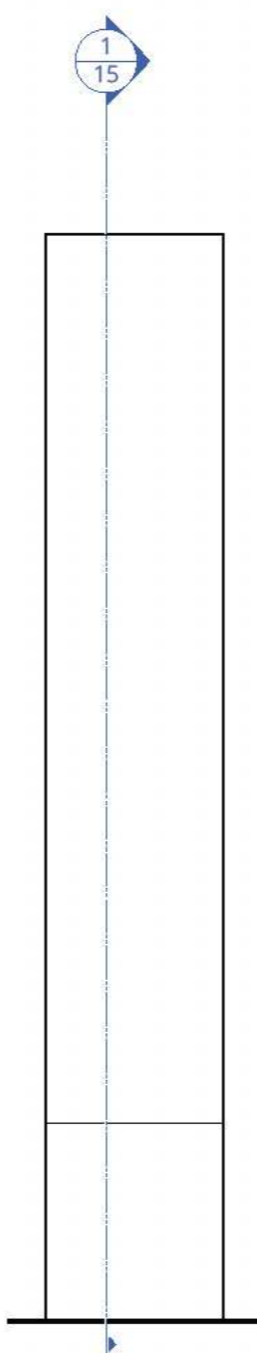
- A. Sign Cabinet:** Fab'd alum. cabinet w/ .125" thk. alum. skin on **C** to sleeve over **B** set in **H**, finished smooth & painted Sutter Teal & White as shown w/ semi-gloss finish.
- B. Support Tube:** .25" thk. x 5" Ø single struct. alum. support tube set in on which **C** is built.
- C. Frame:** .125" thk. x 2" sq. tube welded. Mech. fastened to **B** w/ **F** @ **E**.
- D. Access Panel:** .125" thk. alum. located secondary side mech. fastened in place flush w/ tamper proof flat hex head cap screw c/s & painted out to match adjacent surface.
- E. Mounting Angle(s):** .1875 thk. x 2" struct. alum. angle welded to span frame.
- F. Set Fastener:** .5" Ø x 6" S/S bolt thru **F** & **B**.
- G. Anchor(s):** (2) .375"-16 Ø x 3" Hilti Kwik Bolt TZ.
- H. Footing:** Engineered concrete  $f'_c=2500\text{psi}$  18" Ø pier footing w/ (4) # 5 vertical & # 3 hoop rebars on 10" ctrs. 4" perimeter mow strip @ grade.



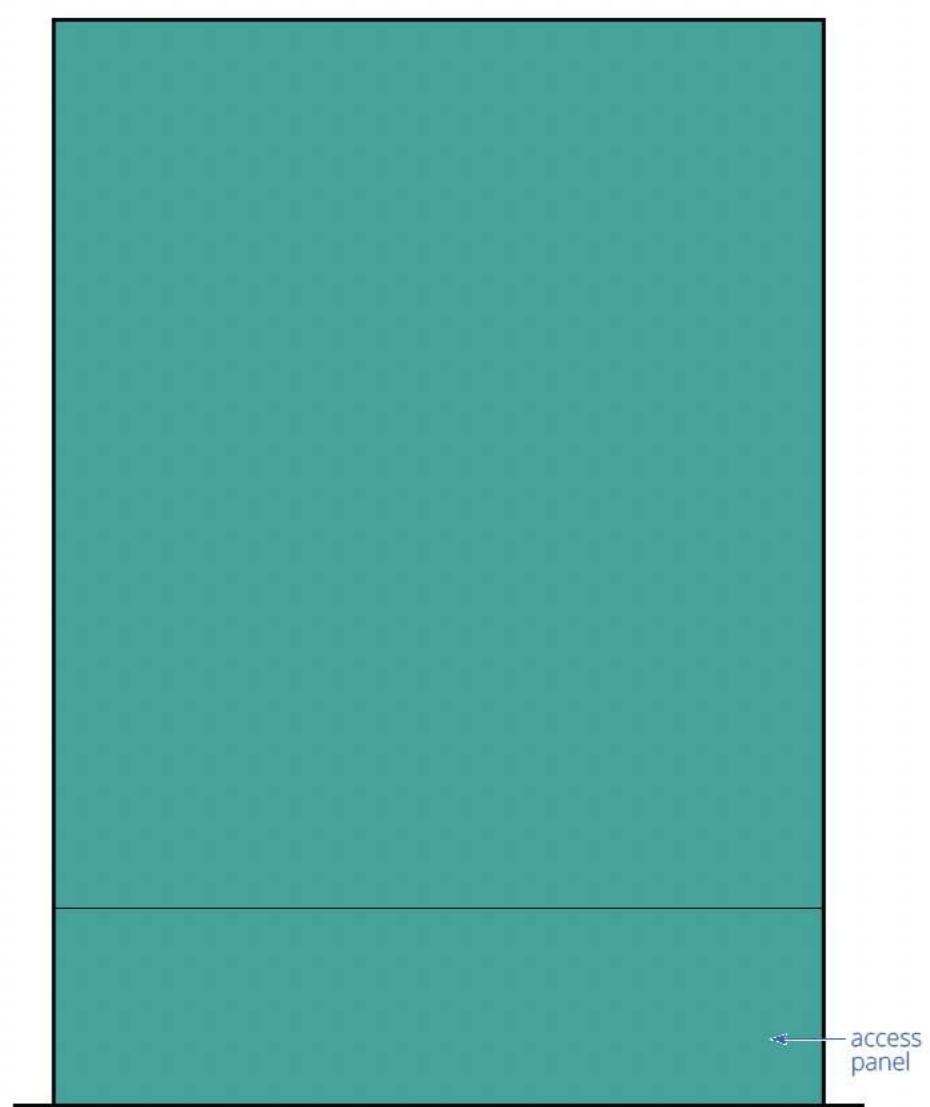
4 PLAN VIEW  
Scale: 1" = 1'-0"



1 S121 M2U-5-NIL.CUS CAMPUS ID ELEVATION SIDE A  
Scale: 1" = 1'-0"

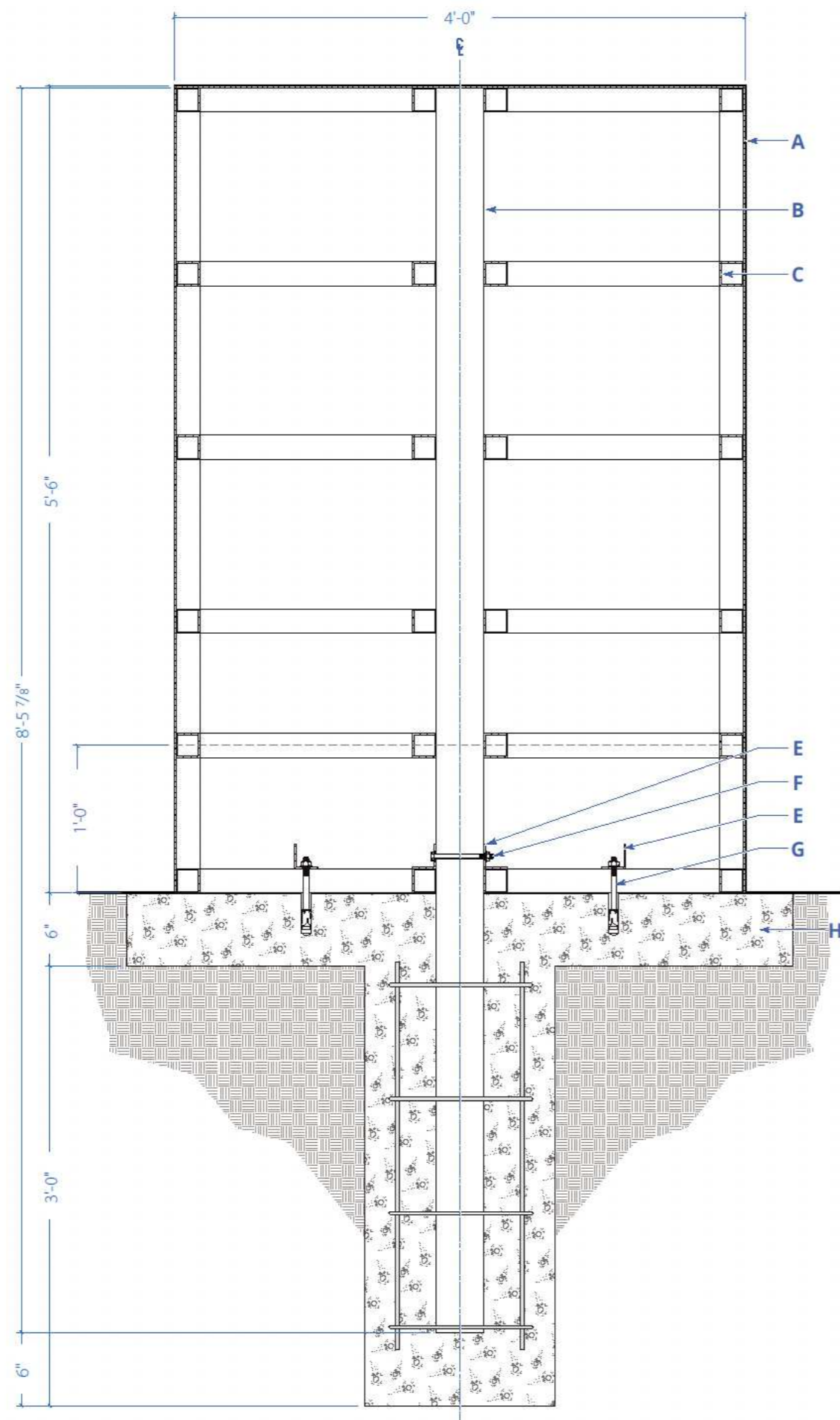


2 SIDE VIEW  
Scale: 1" = 1'-0"



3 BACK ELEVATION SIDE B  
Scale: 1" = 1'-0"

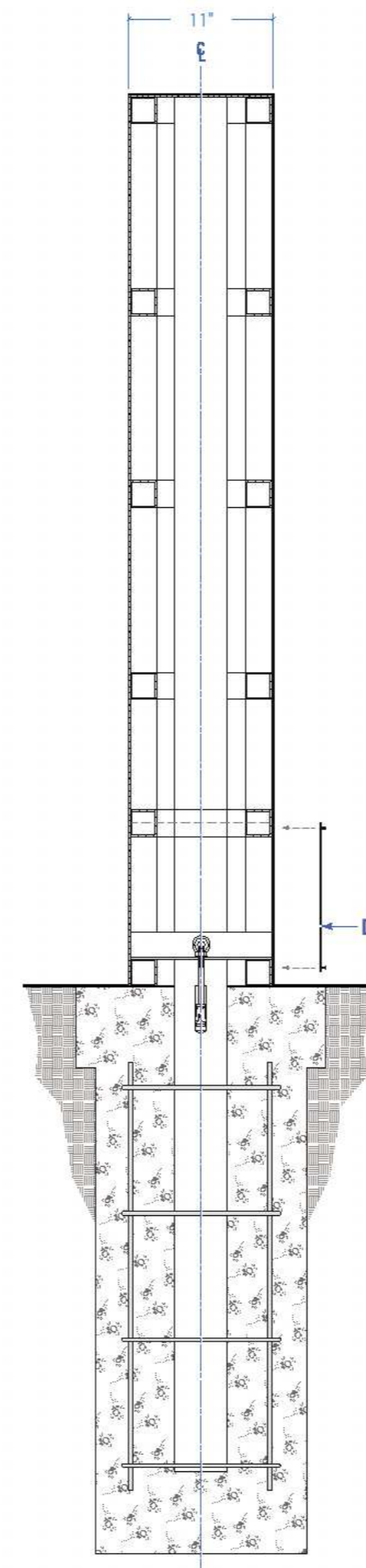
- A. **Sign Cabinet:** Fab'd alum. cabinet on 2" sq. tube frame built to sleeve over 5" Ø single struct. alum. support tube set in F, w/ .125" thk alum. skin, finished smooth & painted Sutter Teal & White as shown w/ semi-gloss finish.
  - B. **Logo:** Miratec Film digitally printed Sutter Teal contour cut vinyl w/ 3M 3660M overlamine.
  - C. **Message:** CNC cut White Reflective vinyl. Typeface: Sora Semi Bold.
  - D. **Urgent Care:** Band White Reflective vinyl w/ CNC cut Red Reflective vinyl message & arrow overlay. Typeface: Sora Semi Bold.
  - E. **Address:** CNC cut White Reflective vinyl. Typeface: Sora Medium.
  - F. **Footing:** Engineered concrete f'c=2500psi footing w/ 4" perimeter mow strip.
- NOTE: See subsequent page for additional specifications & details.



1

MU2-5-NIL.CUS TYPICAL SECTION DETAIL

Scale: 1" = 1'-0"

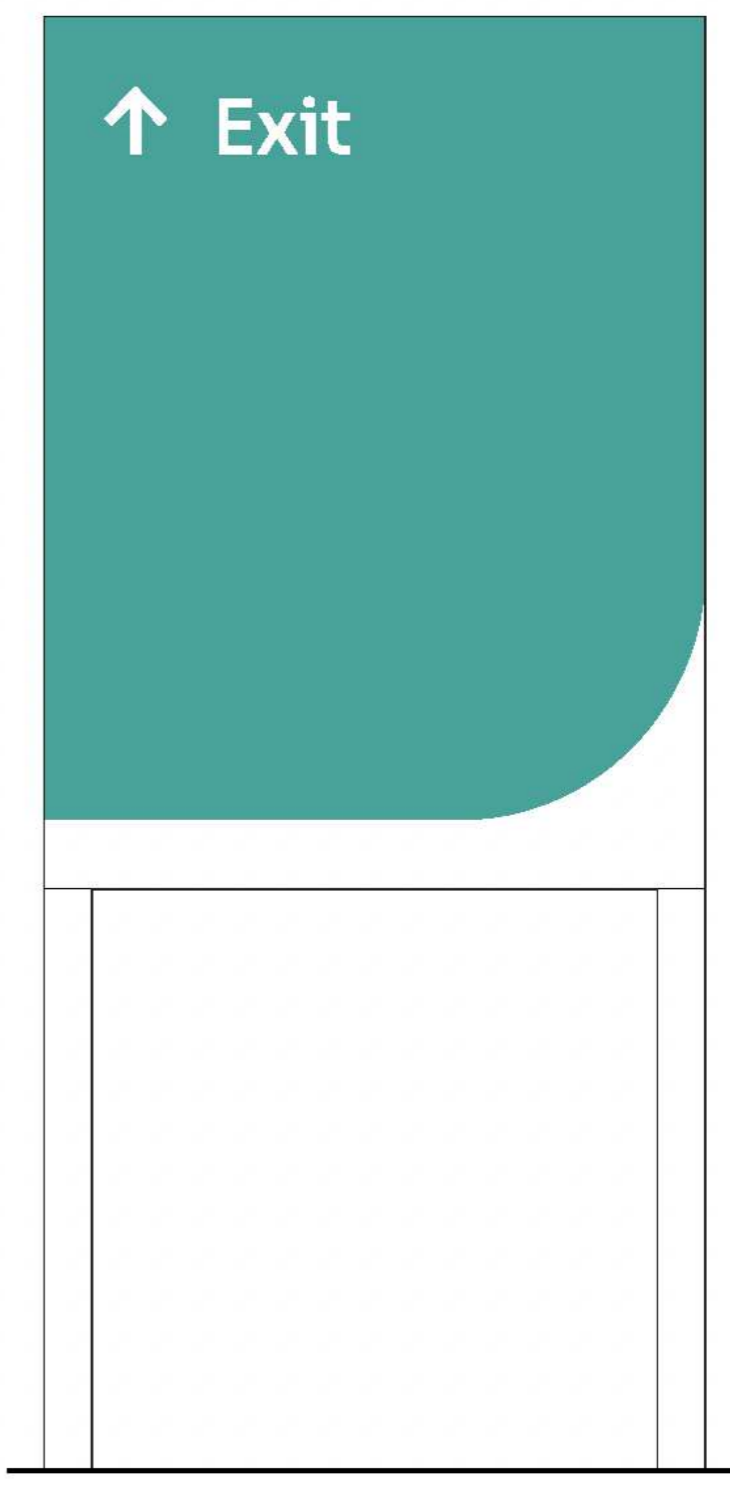
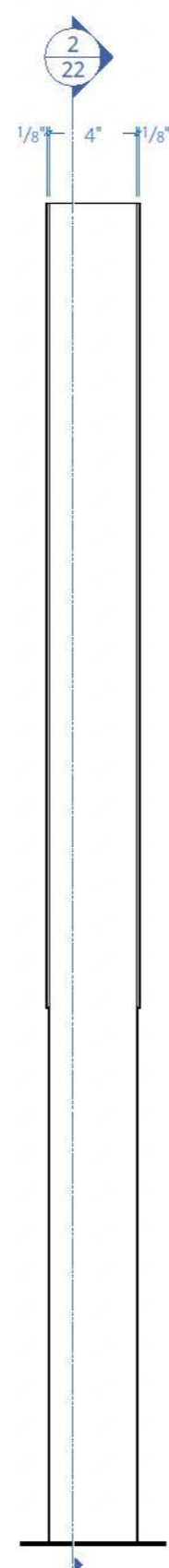


2

TYPICAL SECTION DETAIL

Scale: 1" = 1'-0"

- A. Sign Cabinet:** Fab'd alum. cabinet w/ .125" thk. alum. skin on **C** to sleeve over **B** set in **H**, finished smooth & painted Sutter Teal & White as shown w/ semi-gloss finish.
- B. Support Tube:** .25" thk. x 4"  $\emptyset$  single struct. alum. support tube set in on which **C** is built.
- C. Frame:** .125" thk. x 2" sq. tube welded. Mech. fastened to **B** w/ **F** @ **E**.
- D. Access Panel:** .125" thk. alum. located secondary side mech. fastened in place flush w/ tamper proof flat hex head cap screw c/s & painted out to match adjacent surface.
- E. Mounting Angle(s):** .1875 thk. x 2" struct. alum. angle welded to span frame.
- F. Set Fastener:** .5"  $\emptyset$  x 6" S/S bolt thru **F** & **B**.
- G. Anchor(s):** (2) .375"-16  $\emptyset$  x 3" Hilti Kwik Bolt TZ.
- H. Footing:** Engineered concrete  $f'_c=2500$ psi 18"  $\emptyset$  pier footing w/ (4) # 5 vertical & # 3 hoop rebars on 10" ctrs. 4" perimeter mow strip @ grade.



**A. Post & Panel:** Fab'd alum. .125" thk. 2" x 4" tube frame w/ legs set in **C**, w/ .125" thk. alum. faces, finished smooth, flush to return & painted Sutter Teal & White as shown w/ semi-gloss finish, chemically welded to Posts, painted Sutter White w/ semi-gloss finish.

**B. Message & Arrows:** CNC cut White Reflective vinyl. Typeface: Sora Medium.

**C. Footing:** Engineered concrete f'c=2500psi 9" Ø pour in place pier footings 3" below grade.

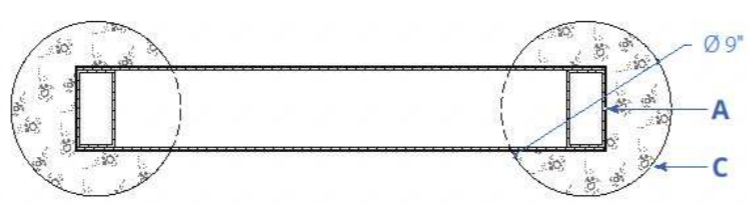
NOTE: See subsequent page for additional specifications & details.

1 **S105 PP5-NIL SECONDARY DIRECTIONAL ELEVATION SIDE A**  
Scale: 1 1/2" = 1'-0"

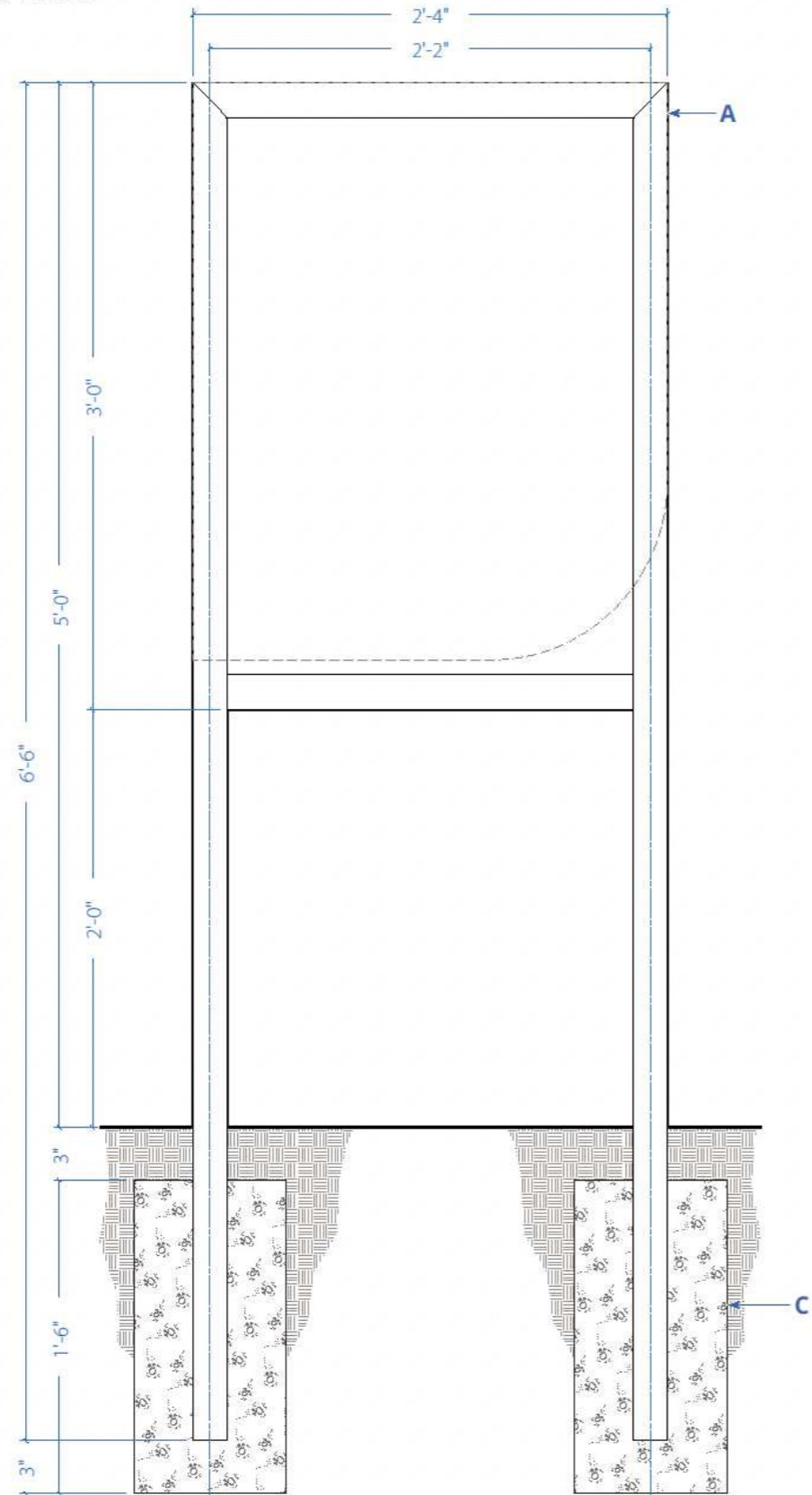
11.65 SF\*  
*\*exempt from ttl. SF calc. per 18.80.290*

2 **SIDE VIEW**  
Scale: 1 1/2" = 1'-0"

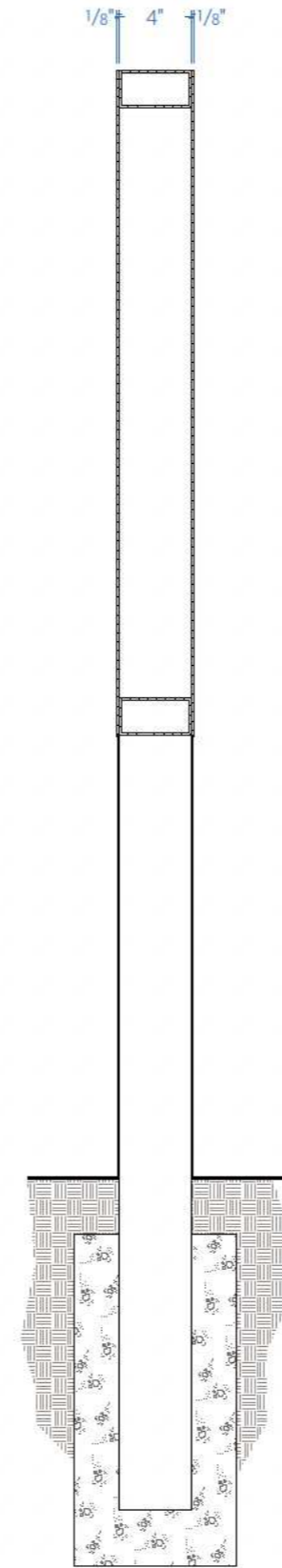
3 **BACK ELEVATION SIDE B**  
Scale: 1 1/2" = 1'-0"



**3** PLAN SECTION DETAIL  
Scale: 1:10



**1** PP5-NIL TYPICAL SECTION DETAIL  
Scale: 1:10

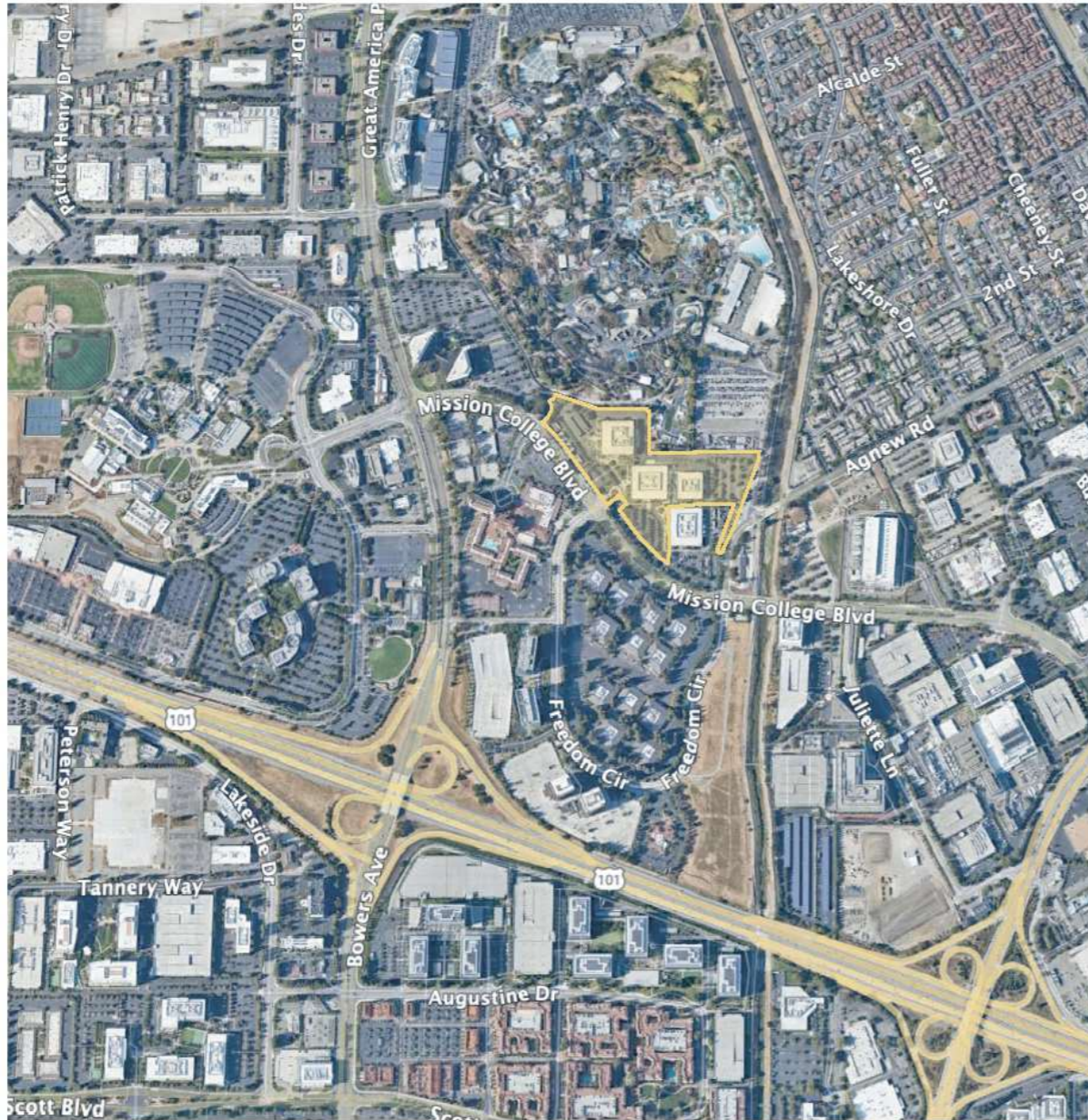


**2** TYPICAL SECTION DETAIL  
Scale: 1:10

**SPECIFICATIONS**

Qty. 11

- A. Post & Panel:** Fab'd alum. .125" thk. 2" x 4" tube frame w/ legs set in **C**, w/ .125" thk. alum. faces, finished smooth, flush to return & painted Sutter Teal & White as shown w/ semi-gloss finish, chemically welded to Posts, painted Sutter White w/ semi-gloss finish.
  - B. Message & Arrows:** CNC cut White Reflective vinyl. Typeface: Sora Medium.
  - C. Footing:** Engineered concrete  $f_c=2500\text{psi}$  9" Ø pour in place pier footings 3" below grade.
- NOTE: All welds to be ground & finished smooth.

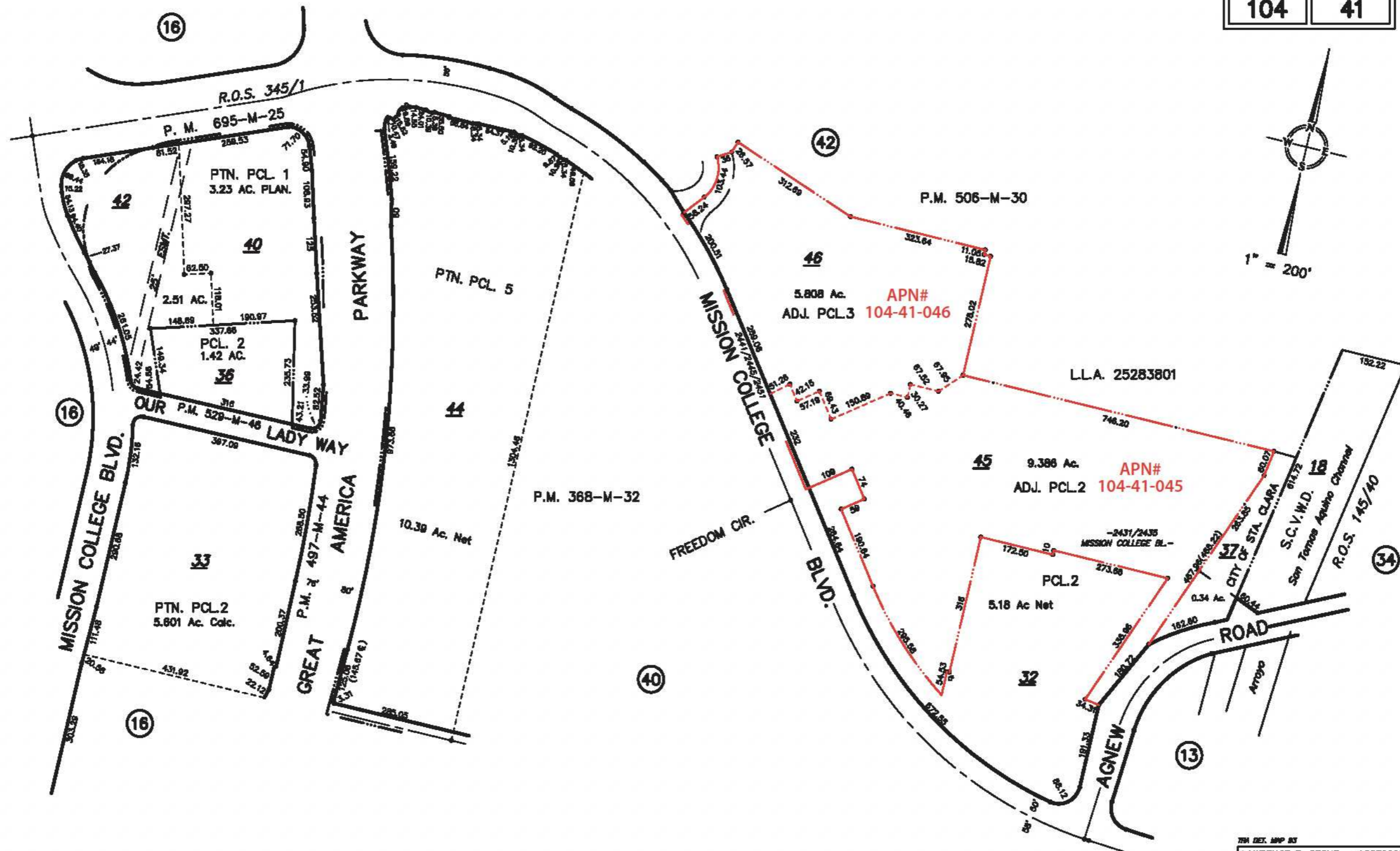


1 VICINITY MAP  
Scale: as noted



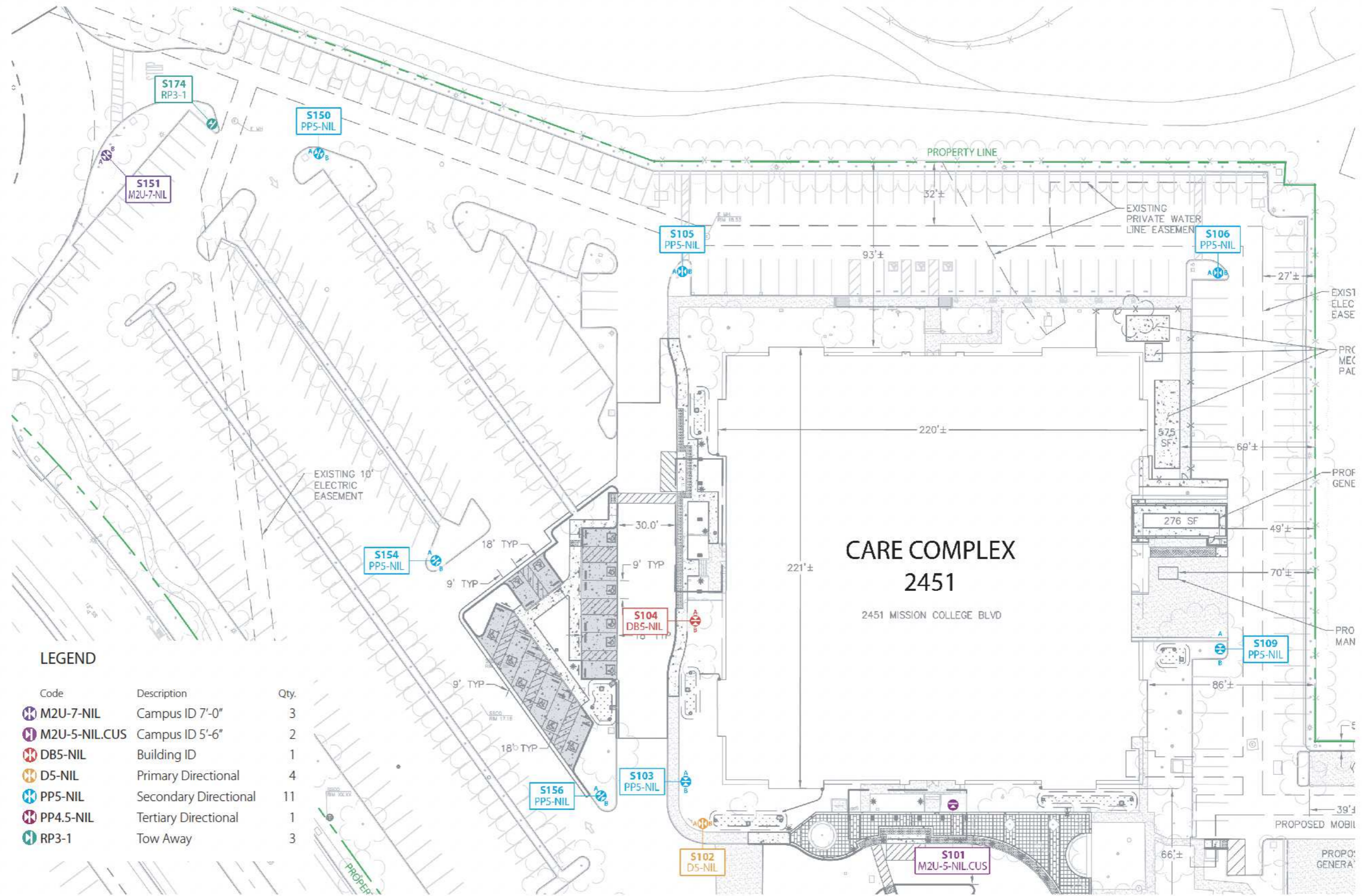
2 ASSESSOR'S MAP  
Scale: as noted





794 DET. MAP 83  
 LAWRENCE E. STONE - ASSESSOR  
 Cadastral map for assessment purposes only.  
 Compiled under R. & T. Code, Sec. 327.  
 Effective Roll Year 2024-2025

1 PLOT PLAN  
 Scale: as noted



**LEGEND**

Code	Description	Qty.
M2U-7-NIL	Campus ID 7'-0"	3
M2U-5-NIL.CUS	Campus ID 5'-6"	2
DB5-NIL	Building ID	1
D5-NIL	Primary Directional	4
PP5-NIL	Secondary Directional	11
PP4.5-NIL	Tertiary Directional	1
RP3-1	Tow Away	3