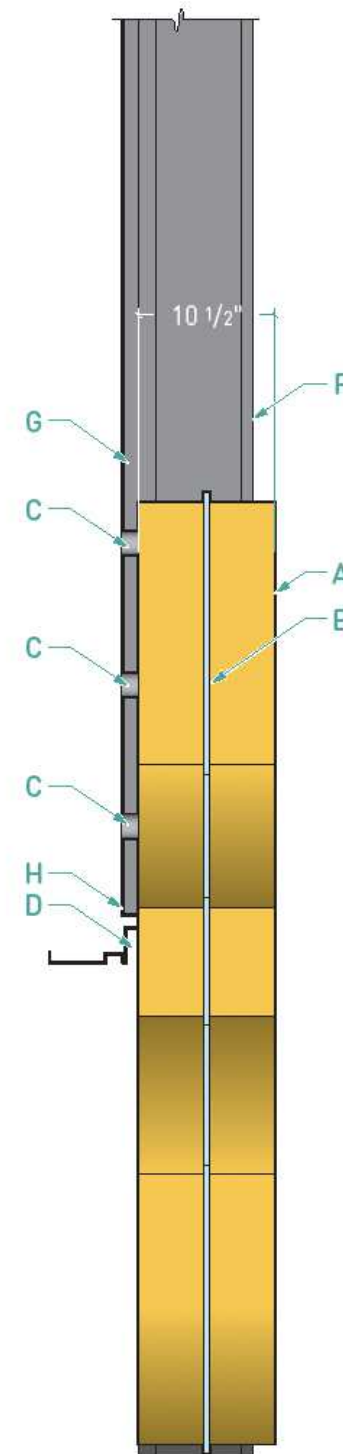
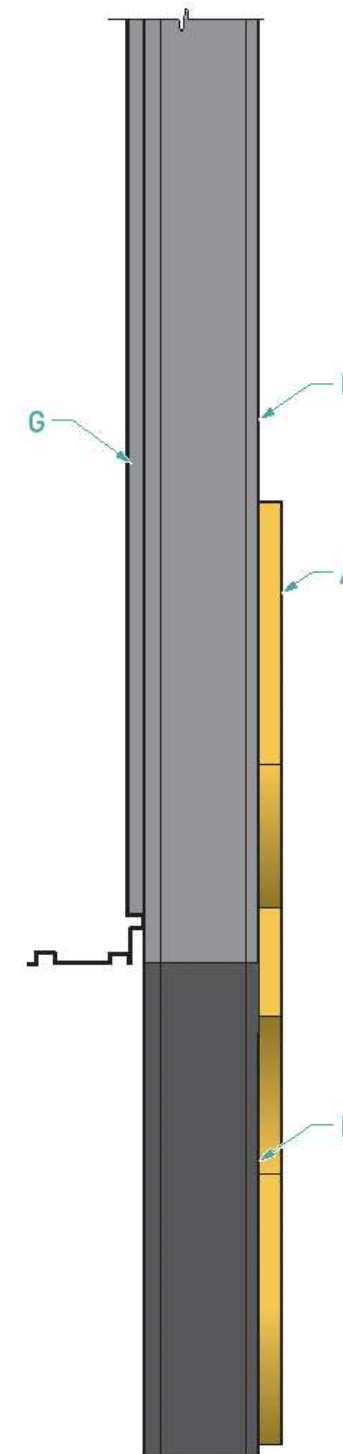


1 ID.1 Bldg. ID. North Elevation
Scale: 3/16" = 1' - 0"



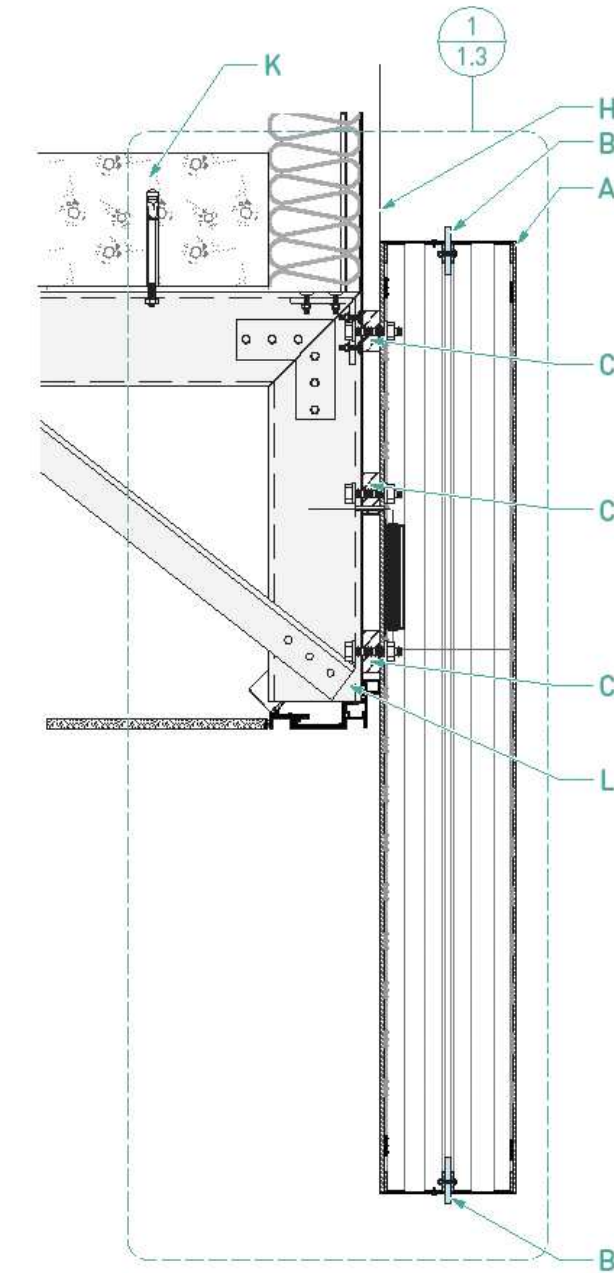
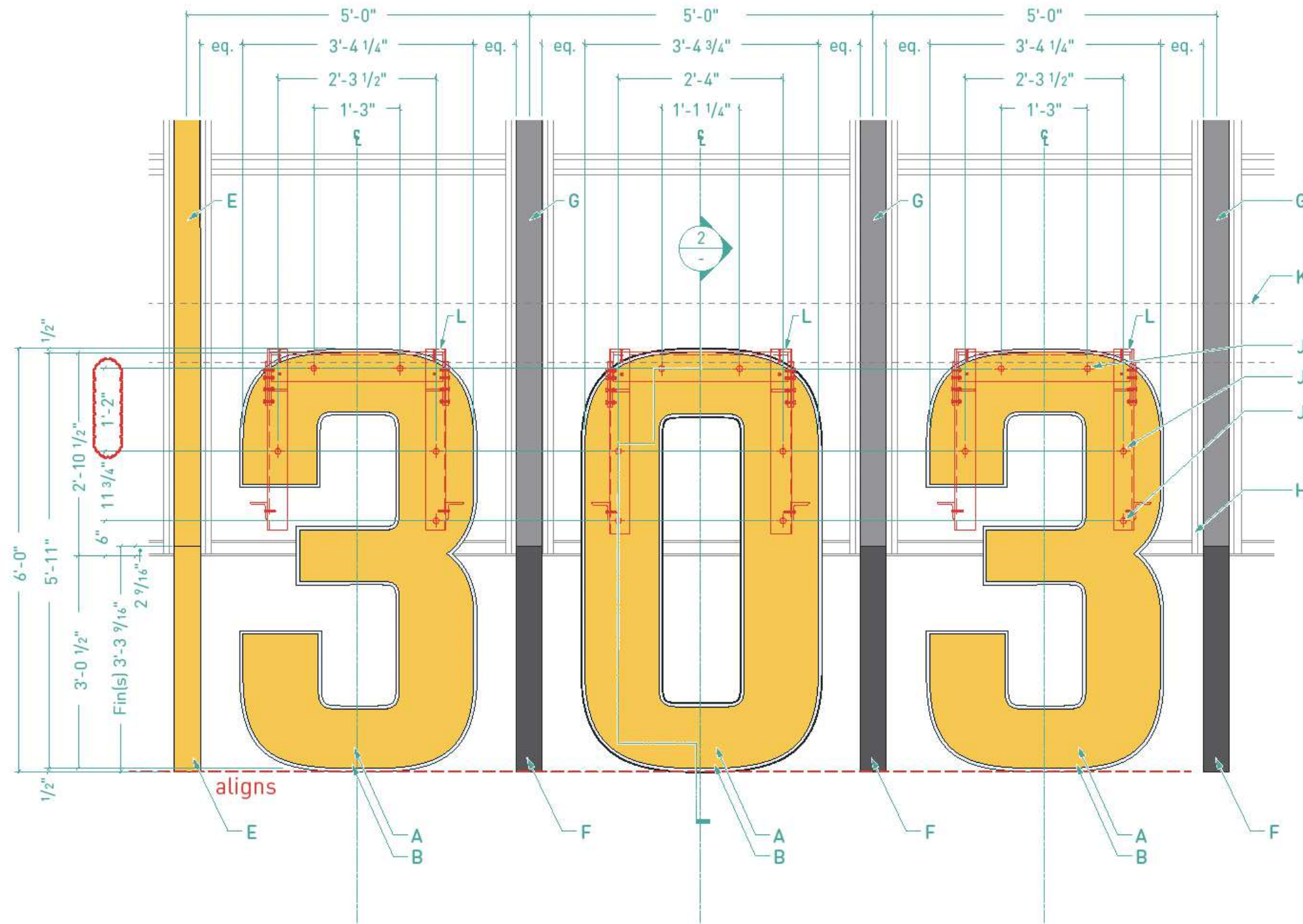
2 Side View - Numeral
Scale: 3/4" = 1' - 0"



3 Side View - Fin (NIC)
Scale: 3/4" = 1' - 0"

LEGEND:

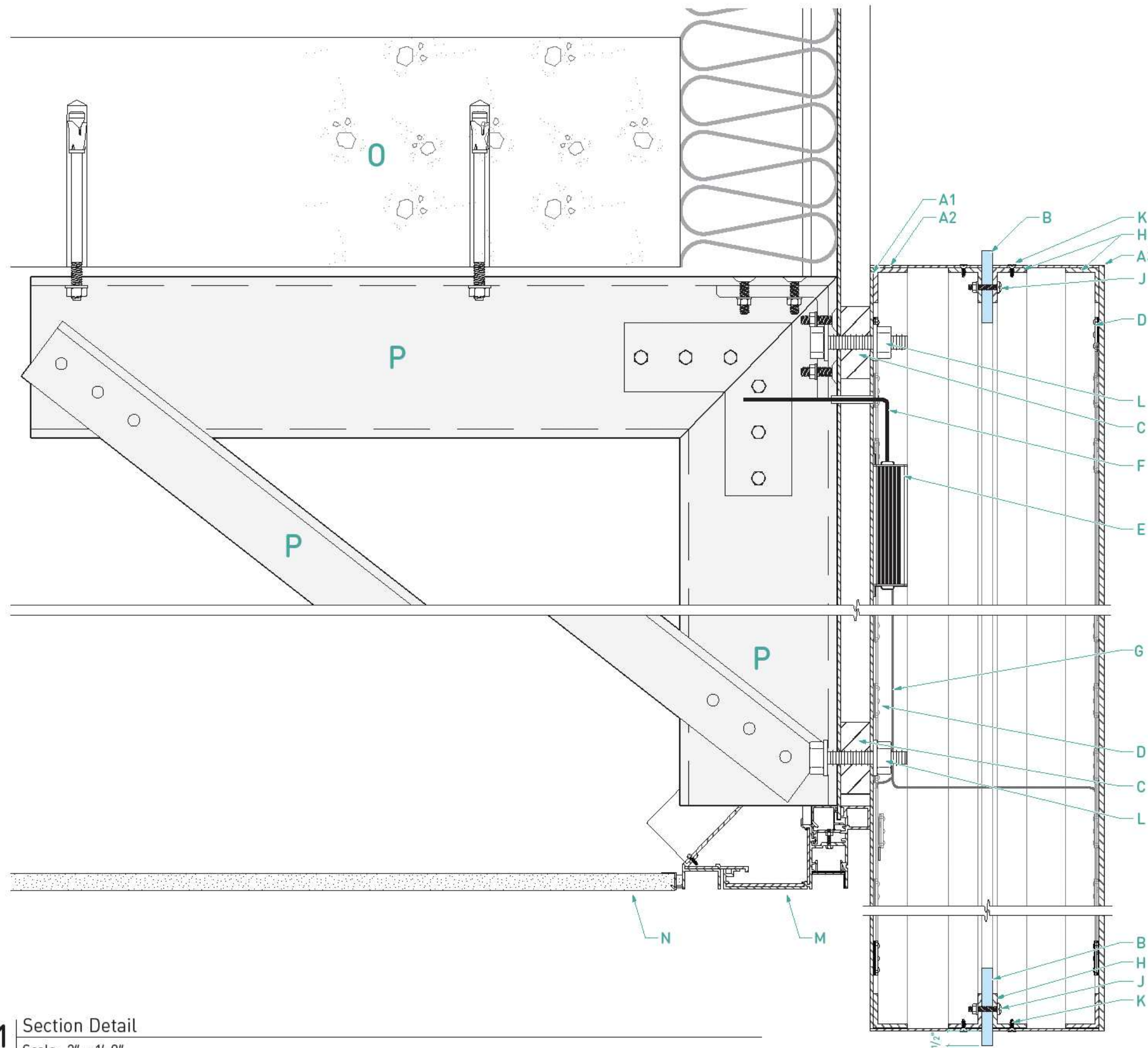
- A. Fab'd alum. numeral(s) w/ 1/8" thk. alum. structural back plate, 3/16" face & 1/8" thk. returns, painted P2
- B. 1/2" thk. frosted acrylic halo w/ 1/2" external projection from numeral form. Acrylic halo to have ample internal projection from alum. angle frame to transmit light. LED module illumination.
- C. 2 1/2" Ø x 1 5/16" thk. (VIF) milled alum. blocking w/ hole >1/32" Ø to accept mounting hardware & electrical penetration, painted to match surface @ upper attachment points.
- D. (NIC) Linear light fixture ("Zipper Light") Fin.
- E. (NIC) Alum. Fin extention(s) to match existing architectural fin color & conditions.
- F. Existing architectural Fin.
- G. Bldg. mullion system



LEGEND:

- A. Fab'd alum. numeral(s) w/ 1/8" thk. alum. structural back plate, 3/16" face & 1/8" thk. returns, painted P2.
- B. 1/2" thk. frosted acrylic halo w/ 1/2" external projection from numeral form. Acrylic halo to have ample internal projection from alum. angle frame to transmit light. LED module illumination.
- C. 2 1/2" Ø x 1 5/16" thk. (VIF) milled alum. blocking w/ hole >1/32" Ø to accept mounting hardware & electrical penetration, painted to match surface @ upper attachment points.
- D. NOT USED
- E. (NIC) Linear light fixture ("Zipper Light") Fin.
- F. (NIC) Alum. Fin extension(s) to match existing architectural fin color & conditions.
- G. Existing architectural Fin.
- H. Bldg. mullion system
- J. Attachment point(s), hardware concealed with in numerals.
- K. Concrete floor slab (beyond).
- L. (NIC) See 2020.07.02_Facade Accent Signage Support Frame_303 E Wacker_STAMP dwgs. by Klein & Hoffmann.

See Section Detail on following sheet for additional details & specifications.



LEGEND:

A1. Fab'd alum. numeral(s) w/ 1/8" thk. alum. structural back plate &;

A2. 3/16" face, painted P2 &;

A3. 1/8" thk. returns, painted P2.

Interior of numeral form(s) to be painted fluorescent white to promote light transmission.

B. 1/2" thk. clear acrylic halo w/ 1/2" external projection from numeral form. Acrylic halo to have ample internal projection from alum. angle frame to transmit light. LED module illumination.

C. 2 1/2" Ø x 1 5/16" thk. (VIF) milled alum. blocking w/ hole >1/32" Ø to accept mounting hardware (L) & electrical penetration, painted to match surface @ upper attachment points.

D. LED modules 6000K populated & positioned around interior perimeter of front face and back panel to ensure even illumination & transmission of acrylic halo.

E. LED power supply(s) concealed in ea. numeral form.

F. Electrical 110v/20amp to be supplied to location(s) w/ 5' whip, by others.

G. Waterproof secondary wiring.

H. Alum. angle frame, tabbed along numeral radii.

J. Mechanical fastener(s) @ frame to sandwich halo acrylic in place to face half of numeral form(s).

K. FHMS c/s on returns to secure face half of numeral form(s) to back half. Mechanical access through face half.

L. 3/4" - 10 X 4" (min.) 300-Series S/S fastener & hex nut (85 KSI min.)

M. Bldg. mullion system.

N. Plaster soffit.

O. Concrete floor slab.

P. (NIC) See 2020.07.02_Facade Accent Signage Support Frame_303 E Wacker_STAMP dwgs. by Klein & Hoffmann.

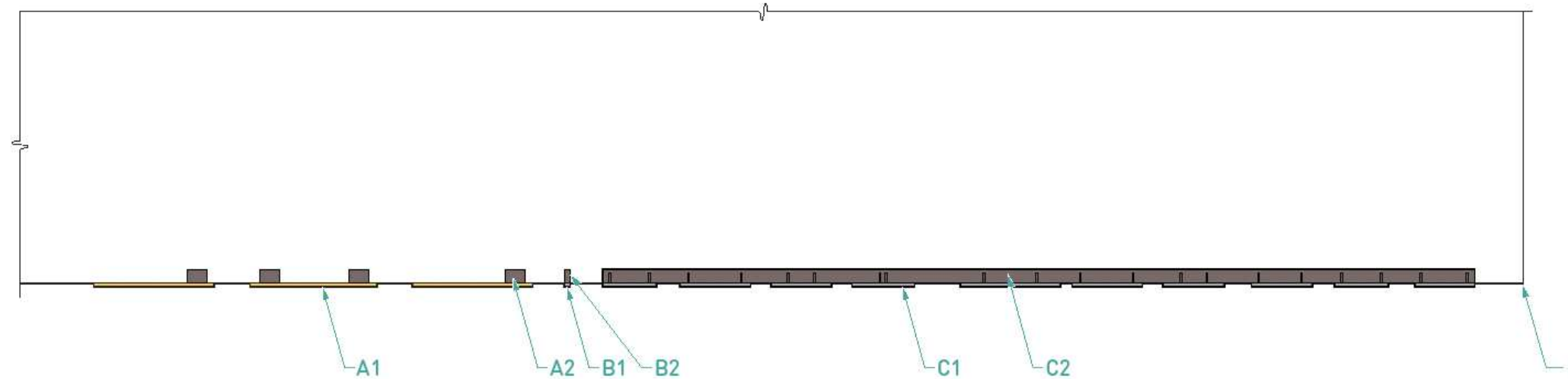


LEGEND:

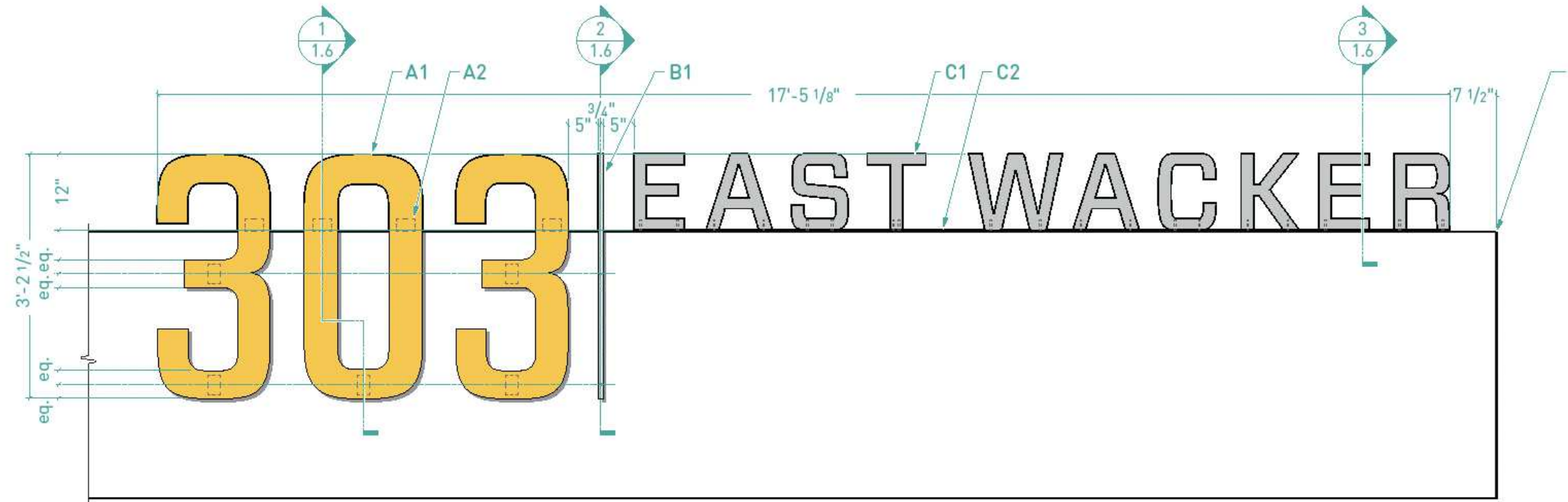
- A1. 1/2" thk. alum. plate laser jet cut numerals, painted P2 all sides. Mounted w/ 1/4" standoff.
- A2. 2 1/2" x 1/4" thk. alum. mounting angle welded to back of numerals, horizontal painted to match (e) canopy; vertical to painted P2. Mechanically fastened to (e) canopy.
- A3. Monarch MF250 Z-clip 6063-T6 alum., pocket weld to back of numeral. Bottom half painted to match & mechanically fastened to (e) canopy.
- B1. 1/2" thk. alum. plate laser jet cut rule, painted P5. Mounted w/ 1/4" standoff.
- B2. 2 1/2" x 1/4" thk. alum. mounting angle w/ width of vertical to be less than rule stroke 1/8" each side, welded to back of rule, horizontal painted to match (e) canopy; vertical to painted P5. Mechanically fastened to (e) canopy.
- B3. 1/4" Ø threaded rod set in back of rule, sleeved w/ alum. tube painted to match (e) canopy.
- C1. 1/2" thk. alum. plate laser jet cut street name, painted all faces P4. Mounted w/ face flush to A & B.
- C2. 1/4" thk. x 2 1/2" alum. mounting plate, painted to match (e) canopy. Mechanically fastened to (e) canopy.
- C3. 1/4" thk. x 2 1/2" x 1 5/8" (varies to remain concealed behind letter stroke) gusset, welded to back of letterform(s) & mounting plate, painted to match (e) canopy.
- D. Existing (e) canopy.

LEGEND:

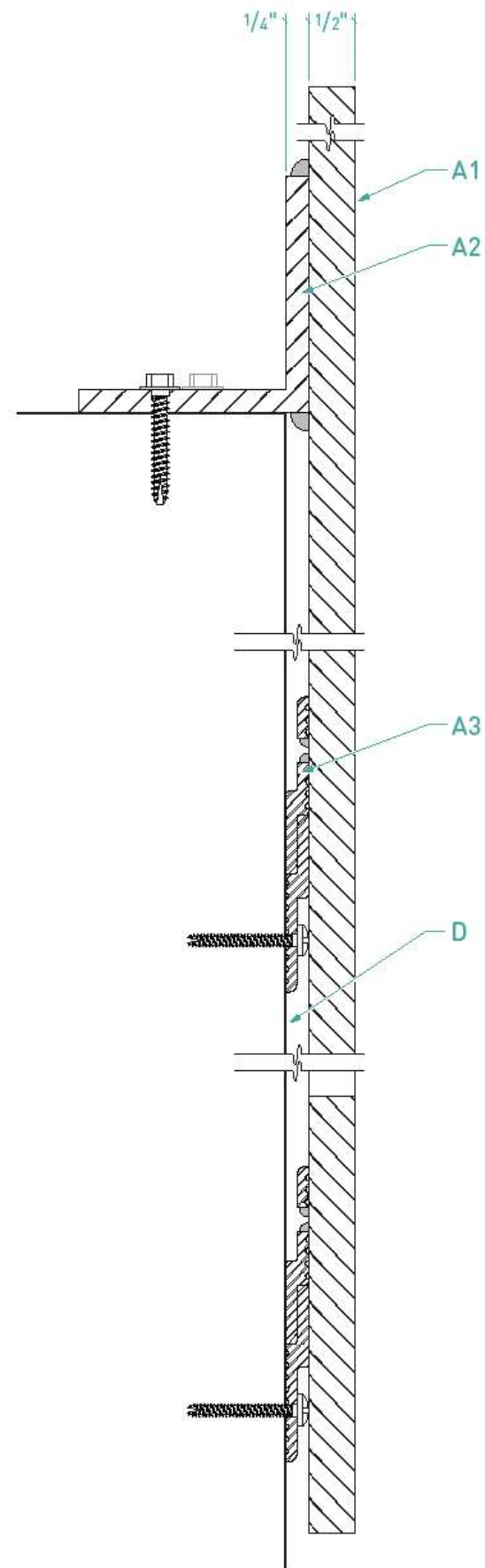
- A1. 1/2" thk. alum. plate laser jet cut numerals, painted P2 all sides. Mounted w/ 1/4" standoff.
- A2. 2 1/2" x 1/4" thk. alum. mounting angle welded to back of numerals, horizontal painted to match (e) canopy; vertical to painted P2. Mechanically fastened to (e) canopy.
- A3. Monarch MF250 Z-clip 6063-T6 alum., pocket weld to back of numeral. Bottom half painted to match & mechanically fastened to (e) canopy.
- B1. 1/2" thk. alum. plate laser jet cut rule, painted P5. Mounted w/ 1/4" standoff.
- B2. 2 1/2" x 1/4" thk. alum. mounting angle w/ width of vertical to be less than rule stroke 1/8" each side, welded to back of rule, horizontal painted to match (e) canopy; vertical to painted P5. Mechanically fastened to (e) canopy.
- B3. 1/4" Ø threaded rod set in back of rule, sleeved w/ alum. tube painted to match (e) canopy.
- C1. 1/2" thk. alum. plate laser jet cut street name, painted all faces P4. Mounted w/ face flush to A & B.
- C2. 1/4" thk. x 2 1/2" alum. mounting plate, painted to match (e) canopy. Mechanically fastened to (e) canopy.
- C3. 1/4" thk. x 2 1/2" x 1 5/8" (varies to remain concealed behind letter stroke) gusset, welded to back of letterform(s) & mounting plate, painted to match (e) canopy.
- D. Existing (e) canopy.



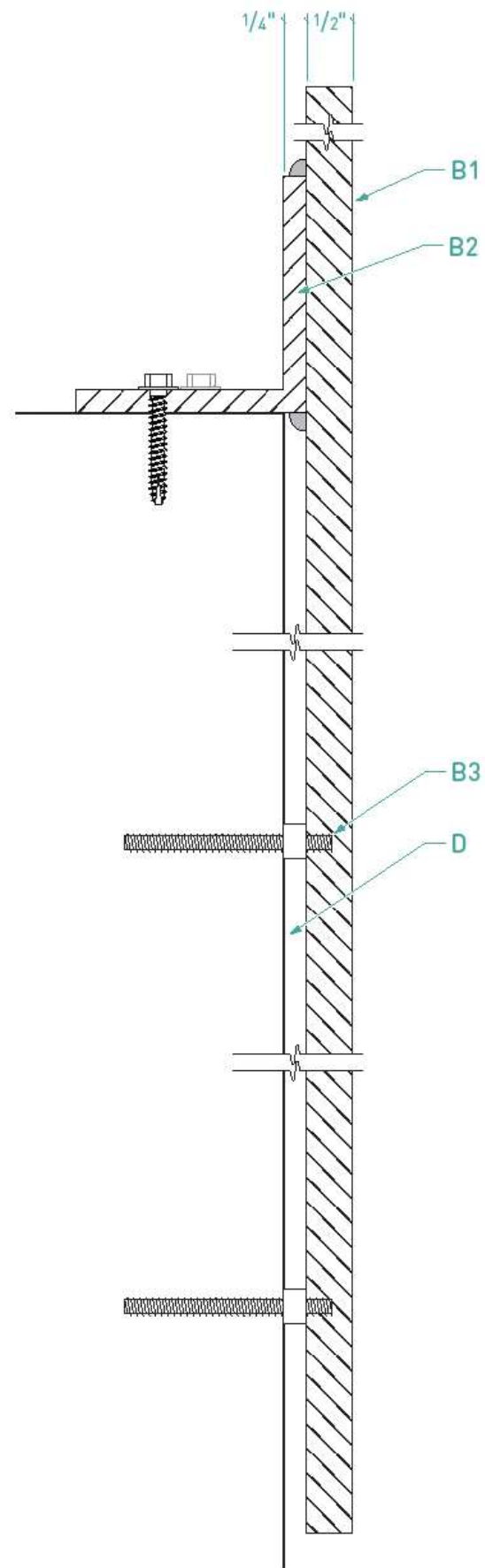
2 | Plan View
Scale: 1/2" = 1' = 0"



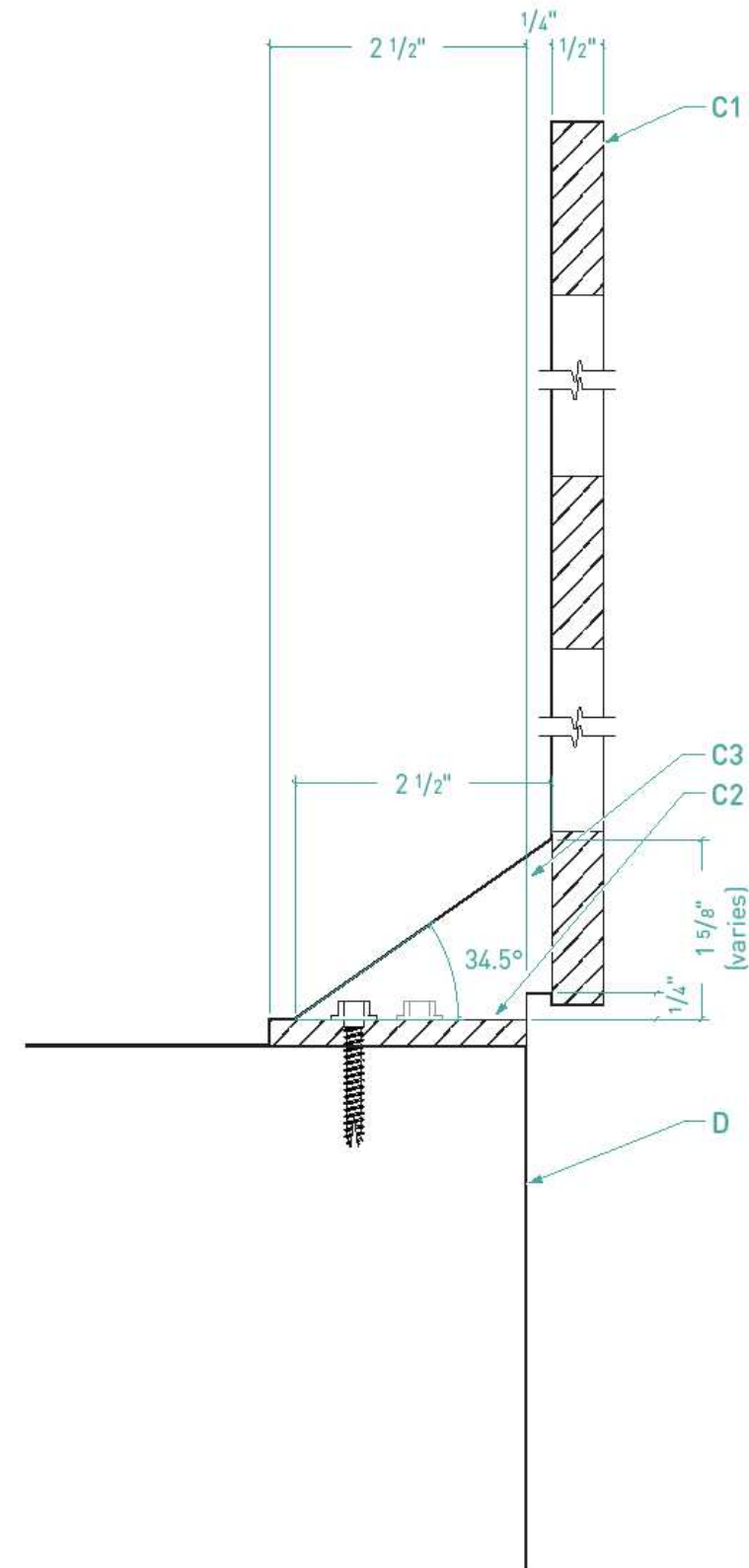
1 | ID.2 Canopy Building ID - Elevation Detail
Scale: 1/2" = 1' = 0"



1 | Section Detail - Numerals (typ.)
Scale: 1:2



2 | Section Detail - Numerals
Scale: 1:2



3 | Section Detail - Street Name (typ.)
Scale: 1:2

LEGEND:

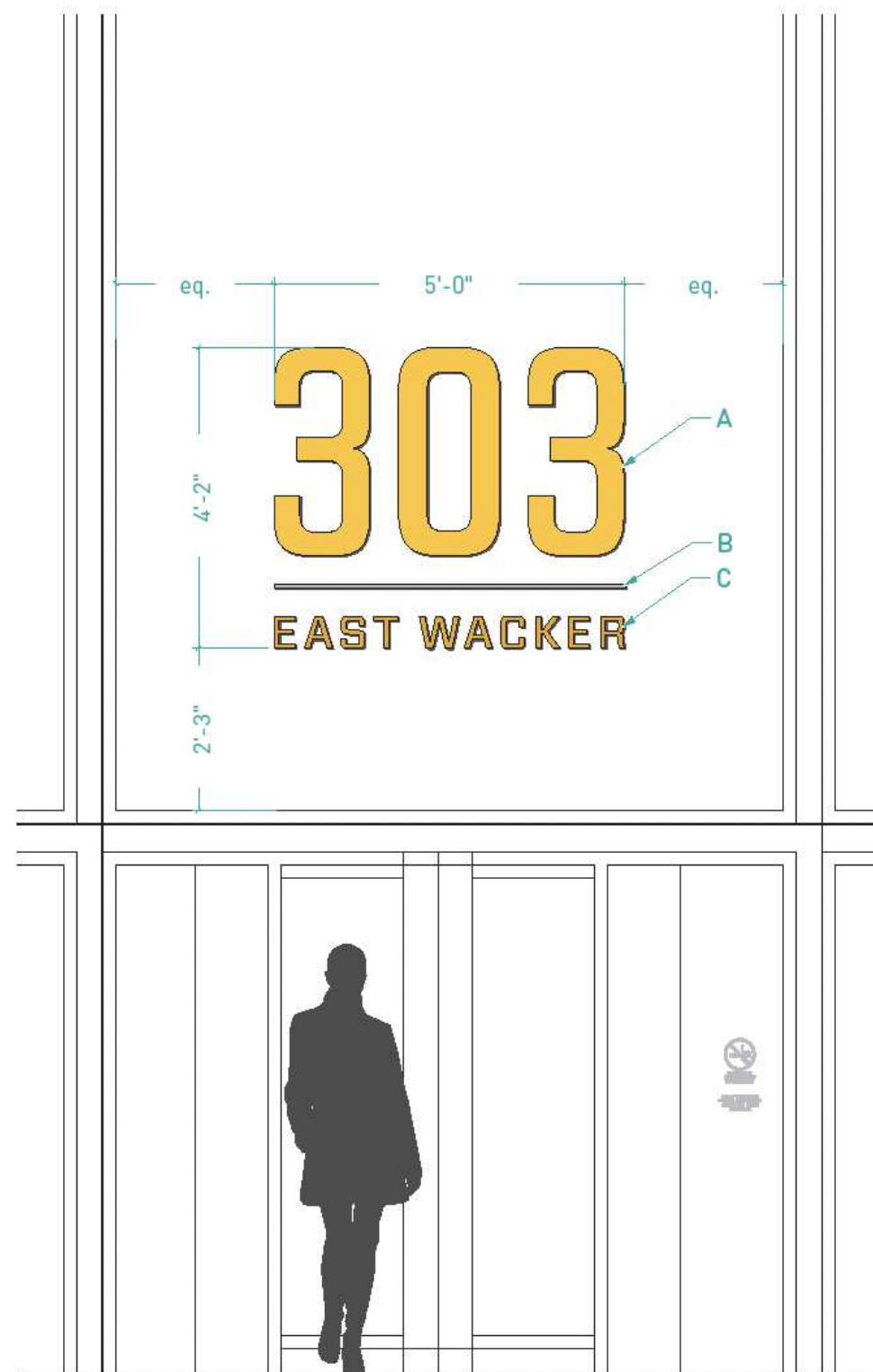
- A1. 1/2" thk. alum. plate laser jet cut numerals, painted P2 all sides. Mounted w/ 1/4" standoff.
- A2. 2 1/2" x 1/4" thk. alum. mounting angle welded to back of numerals, horizontal painted to match (e) canopy; vertical to painted P2. Mechanically fastened to (e) canopy.
- A3. Monarch MF250 Z-clip 6063-T6 alum., pocket weld to back of numeral. Bottom half painted to match & mechanically fastened to (e) canopy.
- B1. 1/2" thk. alum. plate laser jet cut rule, painted P5. Mounted w/ 1/4" standoff.
- B2. 2 1/2" x 1/4" thk. alum. mounting angle w/ width of vertical to be less than rule stroke 1/8" each side, welded to back of rule, horizontal painted to match (e) canopy; vertical to painted P5. Mechanically fastened to (e) canopy.
- B3. 1/4" Ø threaded rod set in back of rule, sleeved w/ alum. tube painted to match (e) canopy.
- C1. 1/2" thk. alum. plate laser jet cut street name, painted all faces P4. Mounted w/ face flush to A & B.
- C2. 1/4" thk. x 2 1/2" alum. mounting plate, painted to match (e) canopy. Mechanically fastened to (e) canopy.
- C3. 1/4" thk. x 2 1/2" x 1 5/8" (varies to remain concealed behind letter stroke) gusset, welded to back of letterform(s) & mounting plate, painted to match (e) canopy.
- D. Existing (e) canopy.

LEGEND:

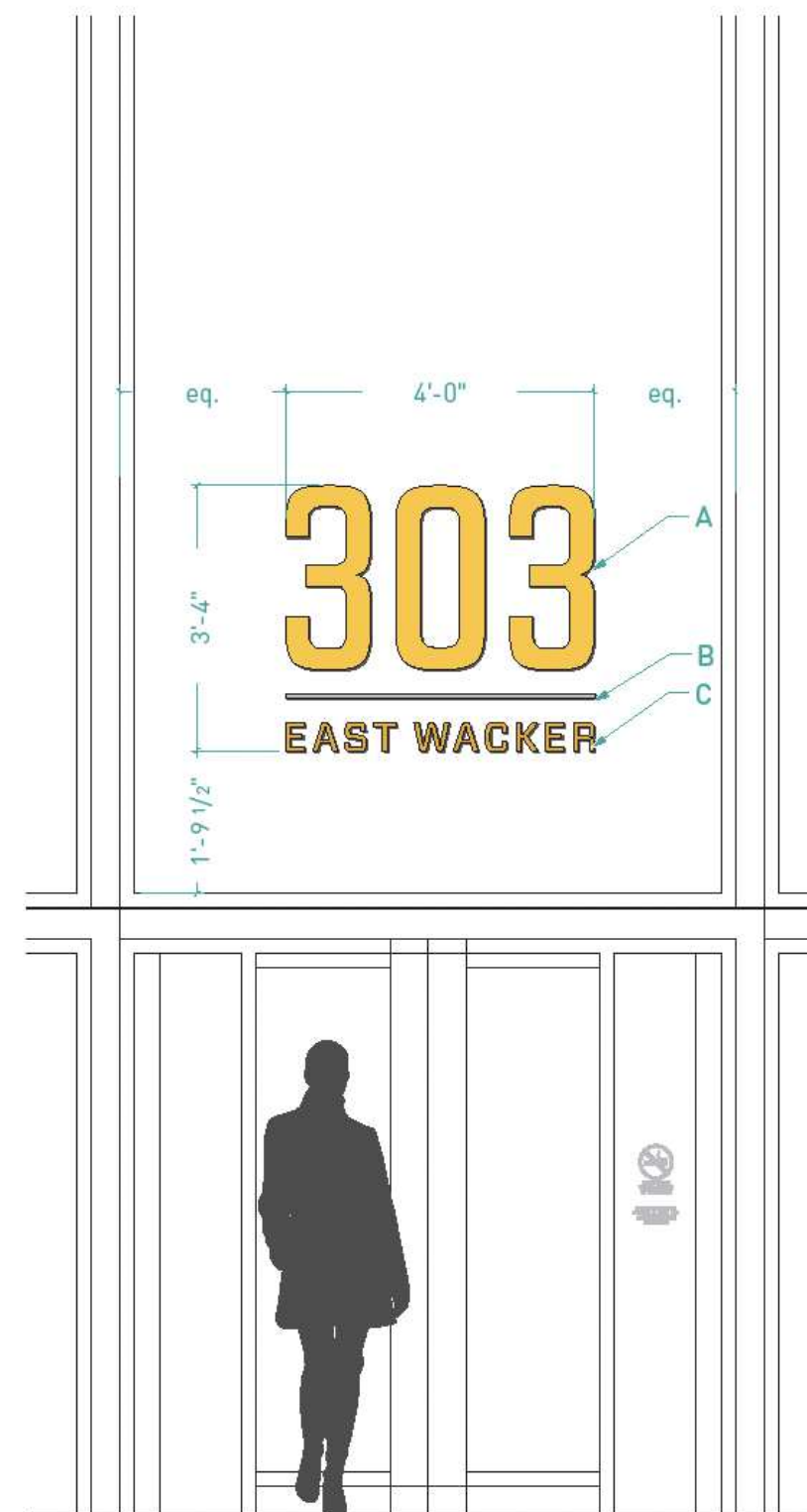
- A. 1/8" thk. white acrylic laser cut, painted P2 as shown, all visible surfaces, Affix to 1st surface of the glass w/ VHB tape and silicone adhesive.
- B. 1/8" thk. white acrylic laser cut, painted P4 as shown, all visible surfaces, Affix to 1st surface of the glass w/ VHB tape and silicone adhesive.
- C. 1/8" thk. white acrylic laser cut, painted P3 as shown, all visible surfaces, Affix to 1st surface of the glass w/ VHB tape and silicone adhesive.

Adhesive Silhouette

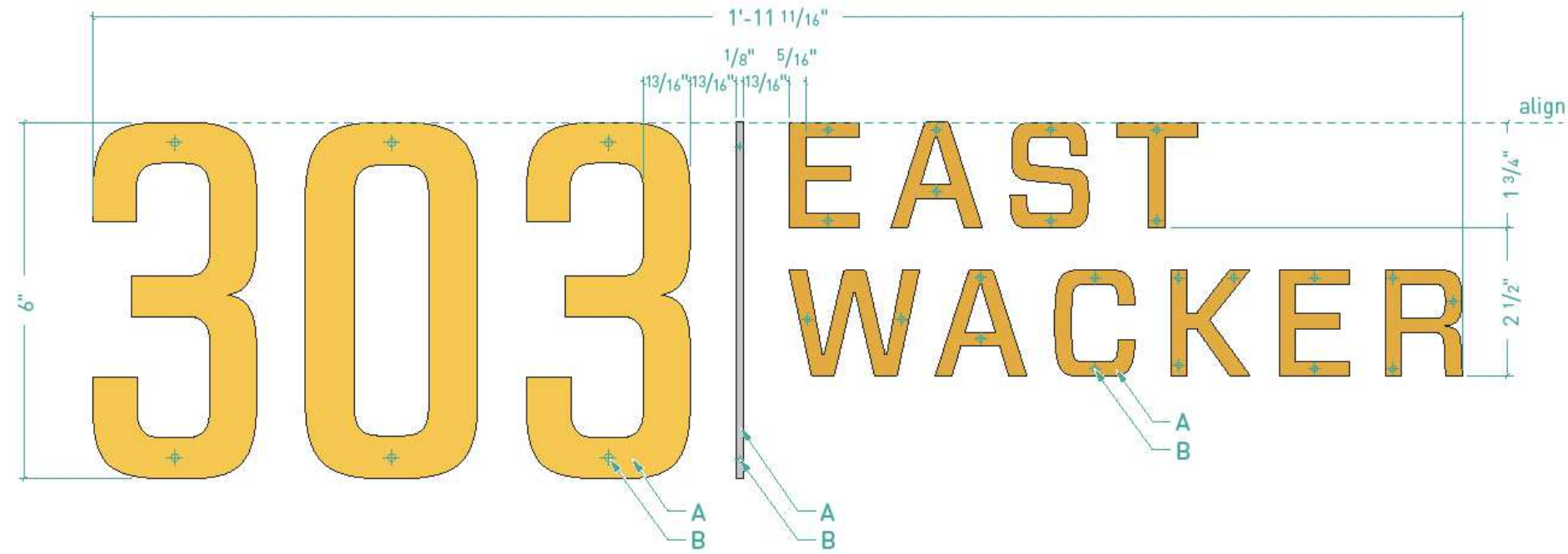
Mirror image silhouette of A & B (Color TBD) opaque vinyl film, applied 2nd surface to conceal tape & silicone adhesive mounting.



1 | East & West Entry - Elevation
Scale: 3/8" = 1' - 0"



2 | South Entry - Elevation
Scale: 3/8" = 1' - 0"

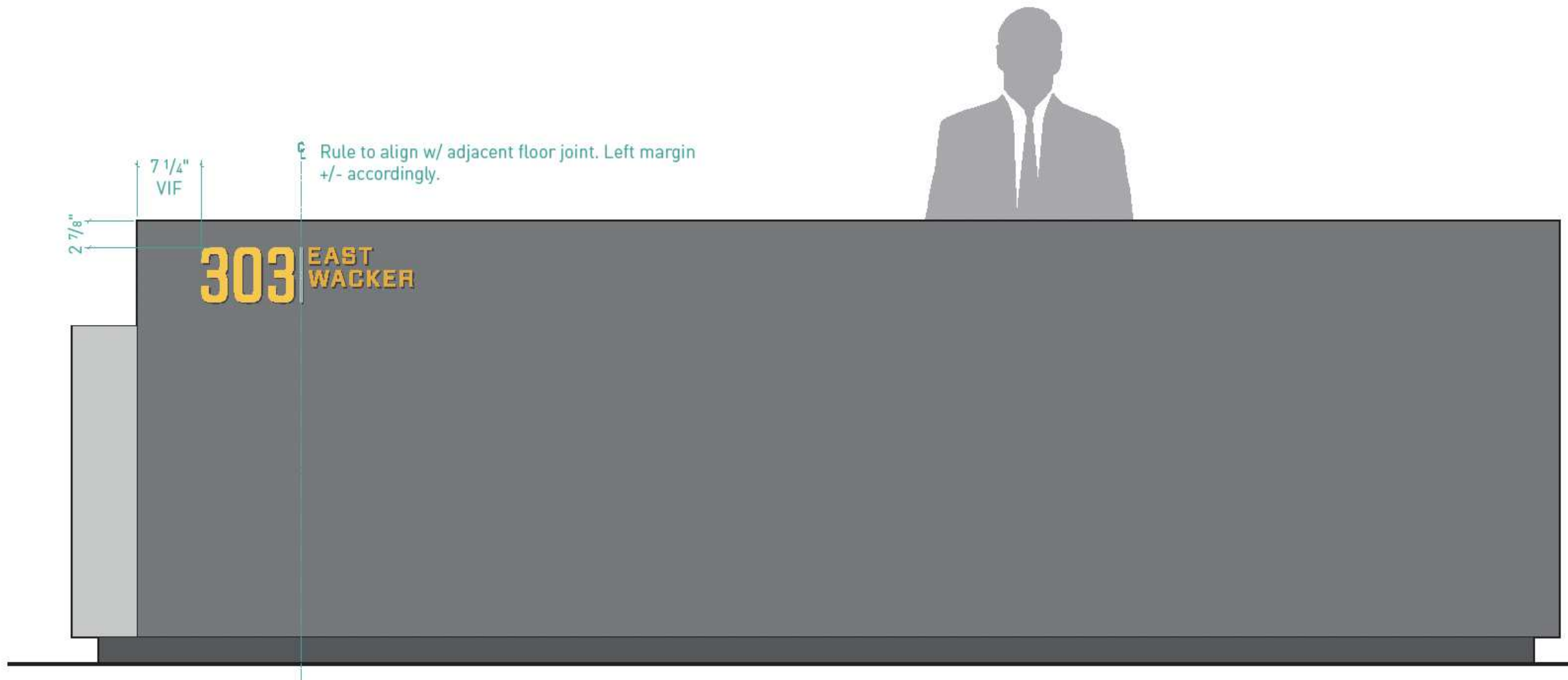


2 | Elevation Detail
Scale: 3" = 1'-0"

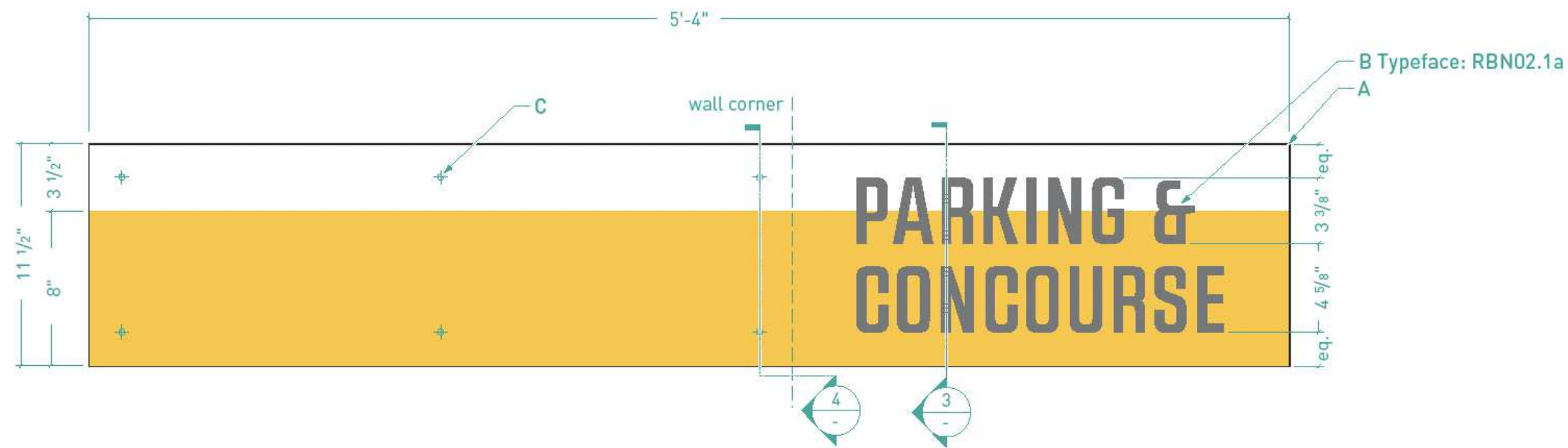
LEGEND:

- A. 1/4" thk. acrylic laser jet cut, painted face and returns; numerals P2; rule P4; street name P3. 3M VHB F9469PC tape second surface silhouette.
- B. Threaded pin-mount to reception desk w/ 3/8" of which 1/8" set in back of acrylic 1/4" into face of desk; 1/8" Ø in numerals; 3/32" Ø in street name; 1/16" in rule line. Set in place w/ clear epoxy in holes. No epoxy to ooze outside of numerals, letters or rule.

NOTE: Dimensions shown at top margin is in accordance with ESI's 303EW Desk 12-19-2019 dimension updates(4).pdf received 01-14-20.



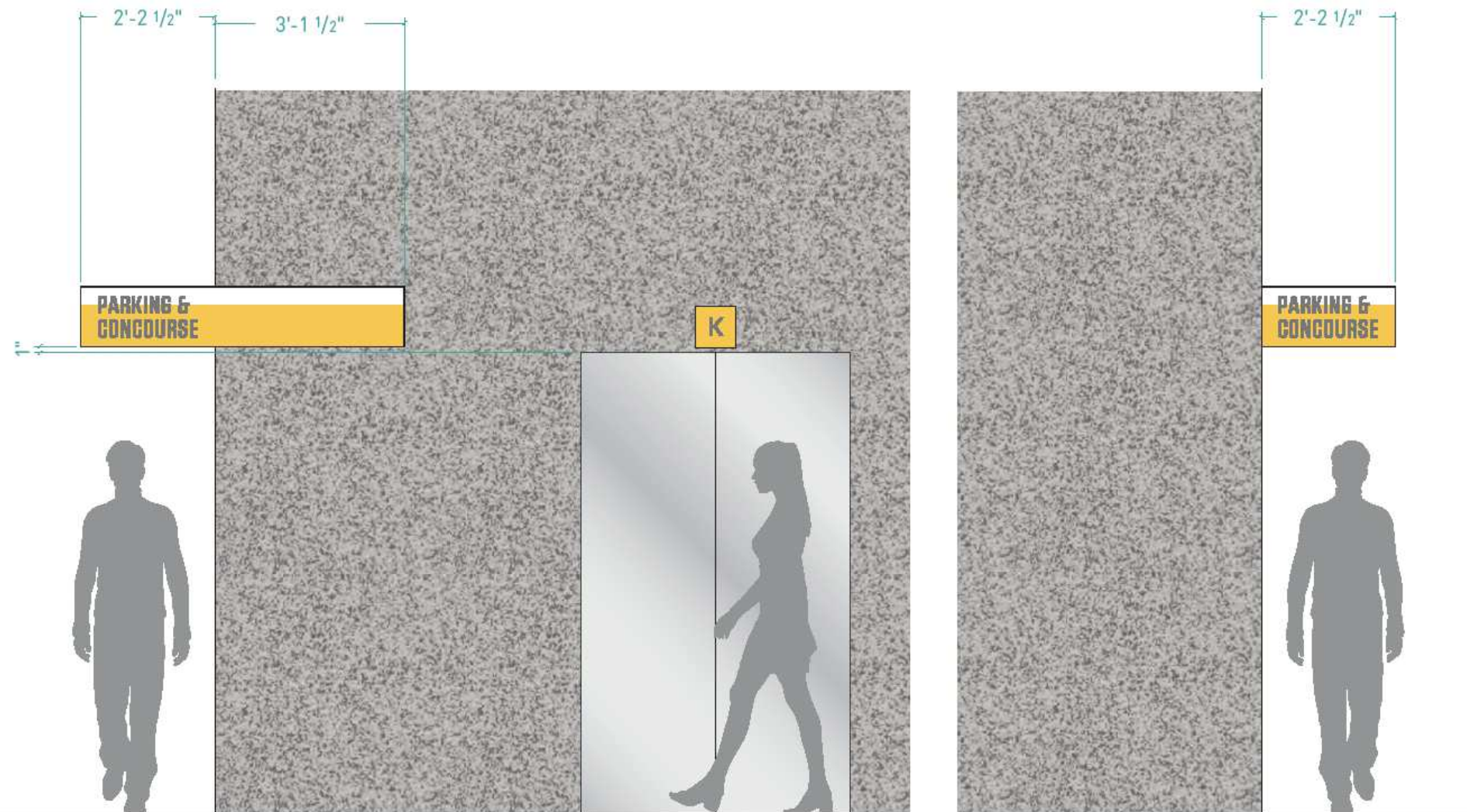
1 | ID.4. - Reception Desk ID Graphic
Scale: 3/4" = 1'-0"



See dwg. 1.5 for DIR. Tenant Name Strip specification.
NOTE: Elevator Core ID show for reference ONLY. See respective drawing for placement of ea. Elev. Core ID.

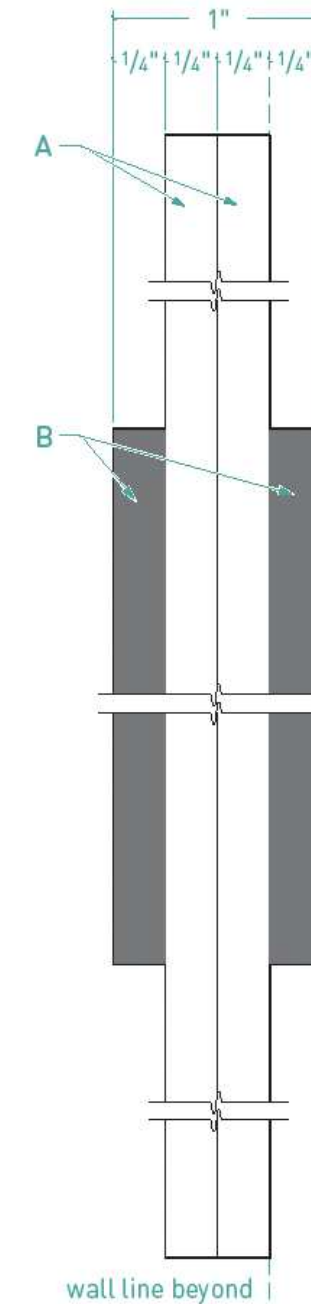
- LEGEND:**
- A. Two (2) 1/4" thk. P95 clear acrylic panels w/ painted finish 2nd surface, top painted P1, bottom painted P2. Sandwich panels together w/3M VHB F9469PC tape. Finish sign w/ satin clear coat.
 - B. 1/4" thk. white acrylic laser cut numerals affixed to first surface of "A" w/ 3M VHB F9469PC tape, painted P6 all visible surfaces, color to match.
 - C. Threaded pin(s) set into wall facing panel. Pin-mount to granite wall and affix w/ silicone adhesive.

5 WF.4 - Elevator Bay Wayfinding
Scale: 1 1/2" = 1'-0"

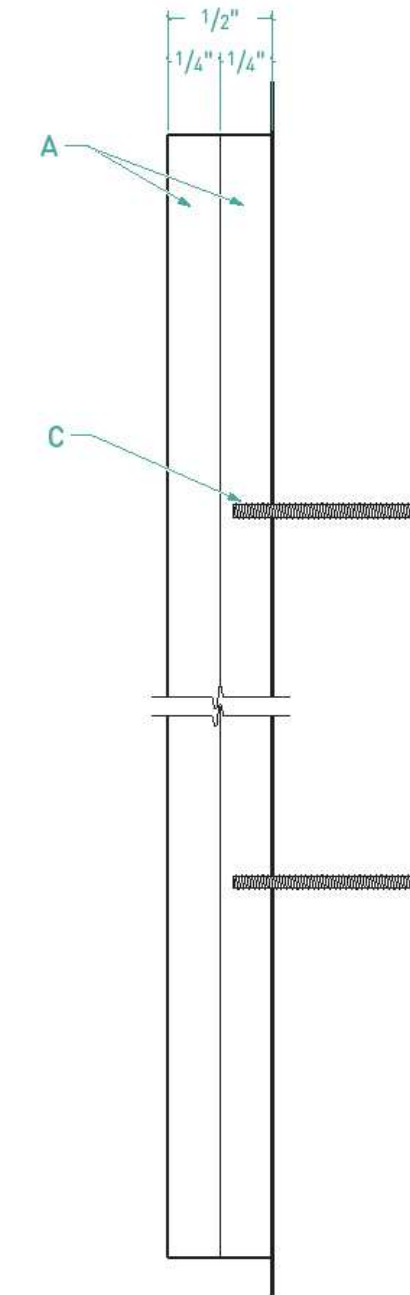


1 WF.3 & DIR. - Placement Elevation (North)
Scale: 3/8" = 1'-0"

2 Placement Elevation (South)
Scale: 3/8" = 1'-0"



3 Section @ Numerals
Scale: 1:1



4 Section @ Pin Mount
Scale: 1:1