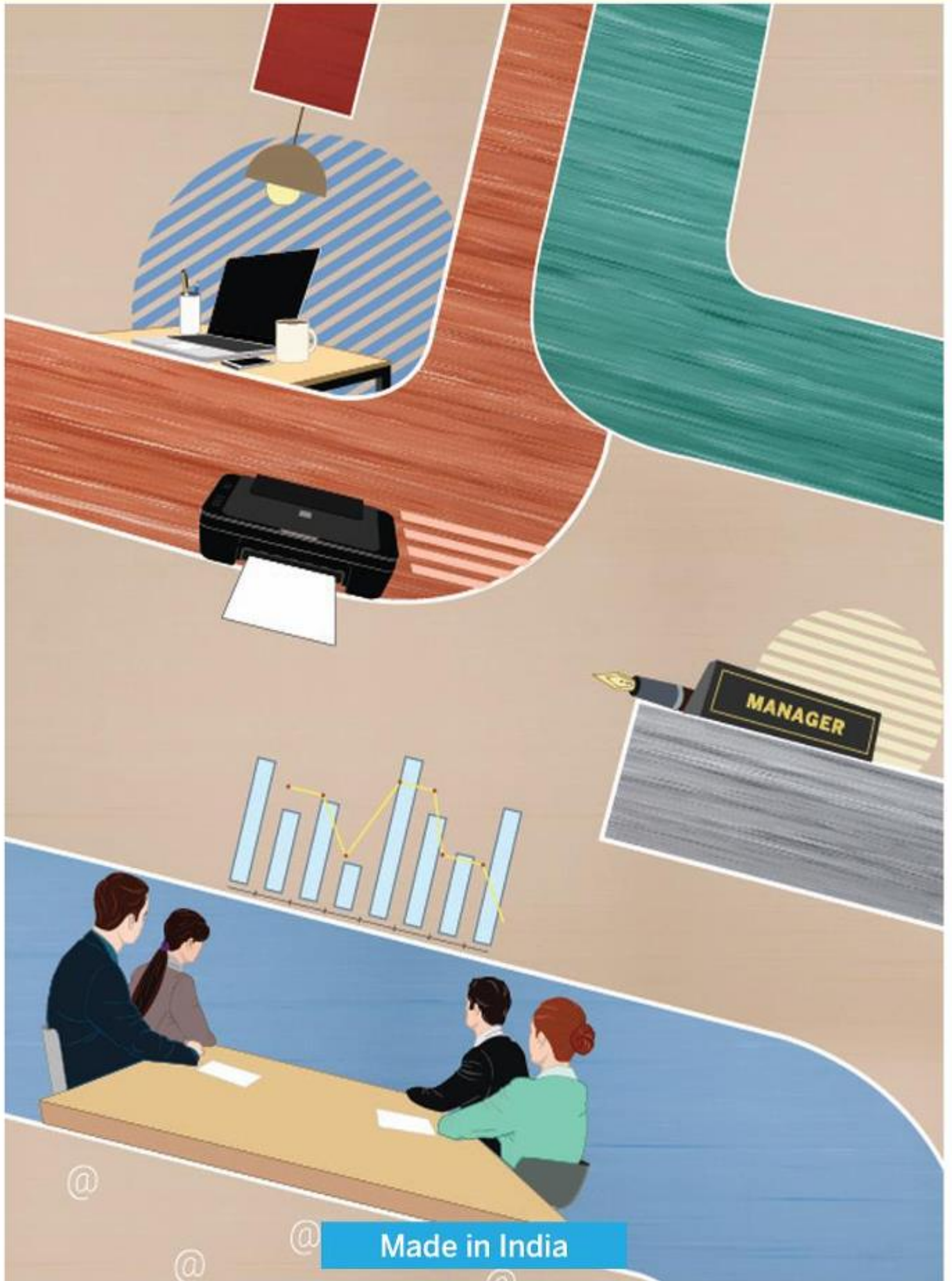


WONDERFLOOR
Vinyl Flooring



Heavy-Duty Flooring



Made in India



Mercury



Lee Cooper



Blue Water



Florida



Desert Sand



Iceberg



Amber



Saffrony



Coral Feast



Emerald Green



Carolina Blue



Oyster



Ice Land



Thickness: 1.00/1.50mm/2.00mm/3.00mm
Roll Width: 1.50 mtr
Roll Length: 15 / 20 linear mtr

ROBUST | Multi-Purpose Floorings

Robust is heavy duty, high quality, resilient, flexible and highly durable marbled PVC Flooring. It is designed to withstand high traffic and abrasion. This product has a unique marbling pattern that adds to the aesthetics of the area where they are installed as it is produced having one base colour and two contrast colours used for marbling by a special hot granulation process which is unique in nature.

The product is specially treated with a **"Wonderguard"** surface treatment which ensures scratch resistance, resistance to staining, easy maintenance & very easy cleaning of shoe scuff marks.

Salient Features

- Robust office flooring is 'P' rated and have a slip resistance of R9
- The floorings are embossed with "Raindrop" embossing design which enables quick cleaning & easy maintenance.
- Robust is available with **PUR surface protection** providing resistance against scratches & dirt accumulation and also ensures quick cleaning/ mopping
- Can be thermo welded for joint free installation
- **Application areas:** Offices, Shops, Factories, Porta Cabins, Auditoriums, schools, libraries, healthcare etc.

1.00mm does not come with PUR Surface Protection

PUR SURFACE PROTECTION



Wonderfloor's **Robust Flooring** incorporates **WONDERGUARD** state-of-the-art-technology, which have exhibited 99.9% inhibition in growth of microbial activity under test conditions and also support clean condition requirements for hygiene.



Beige (4501)



Almond Brown (4502)



Black (4508)



Citrus Yellow (4503)



Light Grey (4509)



Tango Orange (4504)



Ash Grey (4510)



Terracotta (4505)



Lily White (4511)



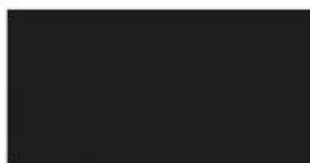
Signal Red (4506)



Carolina Blue (4512)



Sea Green (4507)



Ocean Blue (4513)



Marine Blue (4514)



Super Cream (4515)



Thickness: 1.00/1.50mm/2.00mm/3.00mm
Roll Width: 1.50 mtr / 2 mtr
Roll Length: 15 / 20 linear mtr

DUROFLOOR | Heavy-Duty Floorings

These are economically priced, heavy duty floorings having a simple two colour Directional Marble pattern. These are most suitable for Porta Cabins or areas where low cost products are required but performance of a heavy duty flooring is required. These floorings are having a special surface treatment that ensures quick cleaning & low maintenance costs. These floorings are available in rolls and tiles and thickness available from 1.0 mm to 3 mm. The Rolls are available in width of upto 2 Mtrs. & tiles are produced in various sizes.

Salient Features

- Durofloor is 'M' rated flooring with slip resistance of R9
- Available in a wide range of shade
- Ideal for moderate footfalls
- A cost effective economic flooring solution
- Sound absorption quality
- **Application areas:** Porta Cabins, Pre-fabricated structure, Low budget projects, Warehouse, Labour camps, Shop floors, etc



Thickness: 1.50/2.00mm/3.00mm
 Roll Width: 1.5 mtr / 2 mtr
 Roll Length: 15 / 20 linear mtr

SIGGMA COMMERCIAL | Multi-Purpose Floorings

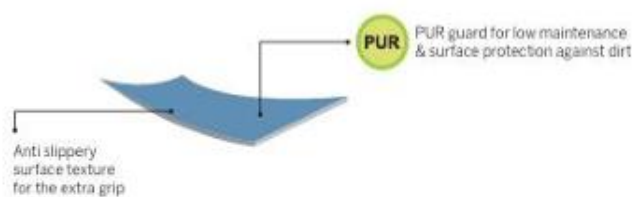
SIGGMA - COMMERCIAL is a specialized flooring designed for commercial projects/ industry keeping in mind the heavy footfalls, trolley movements etc. It has standard antimicrobial / fungicidal properties of the Vinyl flooring.

The product is specially treated with a "Wonderguard" surface treatment which ensures scratch resistance, resistance to staining, easy maintenance & very easy cleaning of shoe scuff marks.

Salient Features

- Siggma Commercial office flooring is 'P' rated and have a slip resistance of R9
- Siggma Commercial is available with **PUR surface protection** providing resistance against scratches & dirt accumulation and also ensures quick cleaning/ mopping
- Can be thermo welded for joint free installation
- **Application areas:** Pharma Shops, Medical Factories, Dispensaries, Clean rooms, Offices & Food industry etc.

PUR SURFACE PROTECTION



Wonderfloor's **Siggma Commercial** incorporates **WONDERGUARD** state-of-the-art-technology, which have exhibited 99.9% inhibition in growth of microbial activity under test conditions and also support clean condition requirements for hygiene.



PERFORMANCE CHARACTERISTICS

CHARACTERISTICS	TEST METHOD	ROBUST	DUROFLOOR	SIGGMA COMMERCIAL
THICKNESS (mm)	EN 428 / ISO 24346	1.00/1.50/2.00/3.00	1.00/1.50/2.00/3.00	1.50/2.00/3.00
ROLL WIDTH (mtr)	EN 426 / ISO 24341	1.50 / 2.00	1.50 / 2.00	1.50 / 2.00
ROLL LENGTH (mtr)	EN 426 / ISO 24341	15 / 20	15 / 20	15/20
TILE SIZE (mm)	EN 427	300x300/305x305/610x610*	300x300/305x305/610x610*	300x300 /305x305/610x610*
TOTAL WEIGHT (kgs/sq mtr)	EN 430 / ISO 23997	1.80/2.70/3.60/5.40	1.85/2.80/3.75/5.60	2.65/3.50/5.25
SURFACE PROTECTION	PUR	PUR PROTECTION (Except 1mm)	PUR PROTECTION-OPTIONAL	PUR PROTECTION
SLIP RESISTANCE	DIN 51130 / ASTM D2047	R9 / PASS	R9 / PASS	R9 / PASS
HYGIENE / CLEAN ROOM TEST	ISO 14644-1	Inhibits Growth of Microbes, Class A	Inhibits Growth of Microbes, Class A	Inhibits Growth of Microbes, Class A
RESIDUAL INDENTATION (mm)	EN 433 / ISO 23343-1	≤ 0.10 mm	≤ 0.10 mm	≤ 0.10 mm
FLEXIBILITY (mm)	EN 435 / ISO 24344	40 mm MANDREL. PASS	40 mm MANDREL. PASS	40 mm MANDREL. PASS
DIMENSIONAL STABILITY (%)	EN 434 / ISO 23999	≤ 0.40%	≤ 0.40%	≤ 0.40%
BEARING CASTOR CHAIR	EN 425 / ISO 4918	SUITABLE / CONTINUOUS	SUITABLE / CONTINUOUS	SUITABLE / CONTINUOUS
FIRE PROPAGATION	BS 476 PART 6	(I)=10.8 (II)=1.7 } CLASS "0"	(I)=10.8 (II)=1.7 } CLASS "0"	(I)=10.8 (II)=1.7 } CLASS "0"
SURFACE SPREAD OF FLAME	BS 476 PART 7	CLASS 1	CLASS 1	CLASS 1
HORIZONTAL & VERTICAL BURNING TEST	IS 15061 - 2002	PASS (ARAI)	PASS (ARAI)	PASS (ARAI)
REACTION TO FIRE (kw/m2)	EN ISO 9239-1	> 8 / PASS Bfl-S1	> 8 / PASS Bfl-S1	> 8 / PASS Bfl-S1
PERFORMANCE CLASSIFICATION	EN 685 / ISO 10874	34, 41	32, 33	34,41
ABRASION RESISTANCE	EN: 660-2	WEAR GROUP P	WEAR GROUP M	WEAR GROUP P
SOUND ABSORPTION	ISO 140-8/EN ISO 717-2	Δ LW = 4db	Δ LW = 5db	Δ LW = 4db
THERMAL RESISTANCE (m2k/w)	EN 12664 / ISO 8302	<0.00568 - PASS	<0.00568 - PASS	<0.00568 - PASS
STAIN RESISTANCE	EN 423 / ISO 26987	0, EXCELLENT RESISTANCE	1, VERY GOOD RESISTANCE	1, VERY GOOD RESISTANCE
COLOUR FASTNESS	ISO 105-B02	> BLUE WOOL STANDARD 5	> BLUE WOOL STANDARD 5	> BLUE WOOL STANDARD 5
MARITIME USAGES		SUITABLE	SUITABLE	SUITABLE

* Against Bulk Order



MAINTENANCE

Do's: • After laying of flooring, the surface should be cleaned daily with damp mop and weekly or fortnightly with soap solution • Prevent point load indentation by covering your furniture legs with rubber stopper caps • To remove stubborn stains, rub the affected area immediately with a soft coir brush or fine steel wool soaked in a warm soap solution • Scuff marks on the floor can be removed with little application of diesel • Use door coir or suitable mats to minimize accumulation of dust on Wonderfloor vinyl flooring • Use water to remove any chemical spill on flooring.

Don'ts: • Do not use any strong detergent, harsh cleaning agent or dry steel wool • Throwing of lighted cigarette butts or match sticks on the floor should be avoided as it could lead to burn marks on the floor • Do not drag any heavy object or furniture on the flooring to avoid scratches on the floor.



شركة الراين لتجارة مواد البناء ذ.م.م
RHINE BUILDING MATERIALS TRADING CO. LLC

Dubai Investment Park 2, Dubai, U.A.E Tel: 971 4 3322605, **Mob: 050 789 5590**
E-mail: info@rhineuae.com, website: www.rhineuae.com

