



Artist's impression

Preston South Primary School Site plan — upgrades and modernisation works

End result of build

Permanent facilities Preston South Primary School will receive from the completed build in December 2022, creating capacity for an extra 200 local students.



Three-storey main learning and administration building. More information on the following pages.

- A. Entry forecourt
- B. Landscape buffer
- C. Staff outdoor area
- D. Nature play
- E. Playground

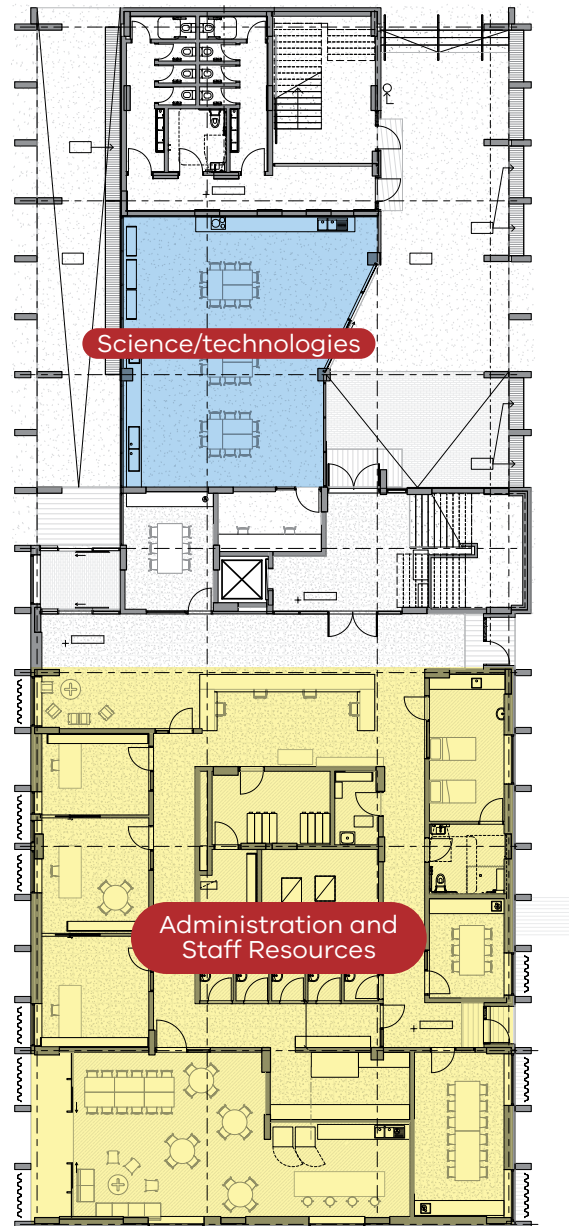
Multipurpose space/outside school hours care

Food technology space

Existing buildings that will be kept

Existing open space

New Main Learning and Administration Building

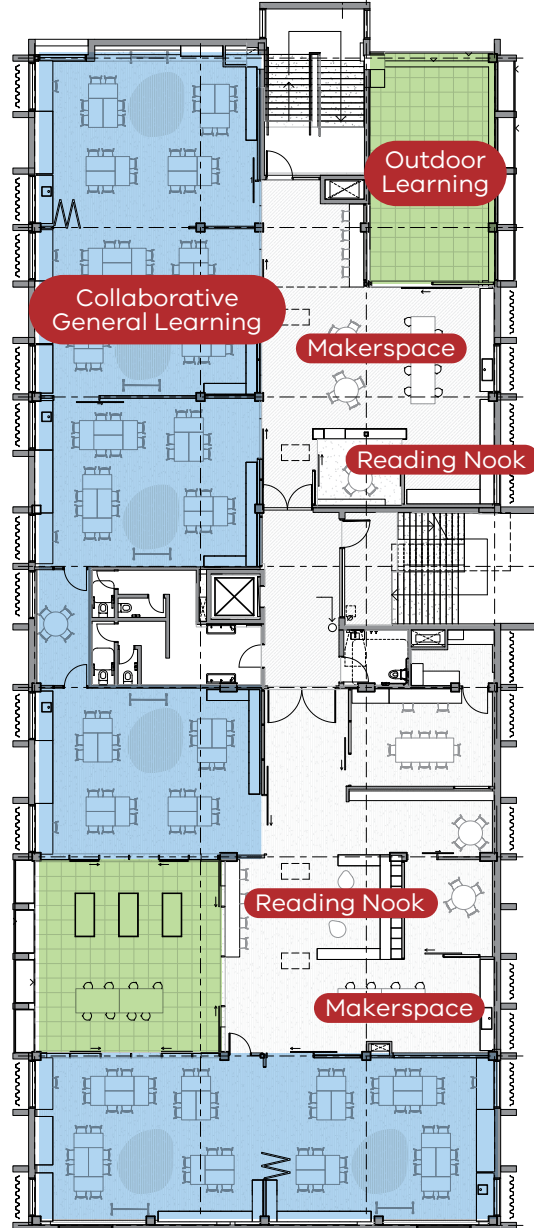


Ground level

New Main Learning and Administration Building

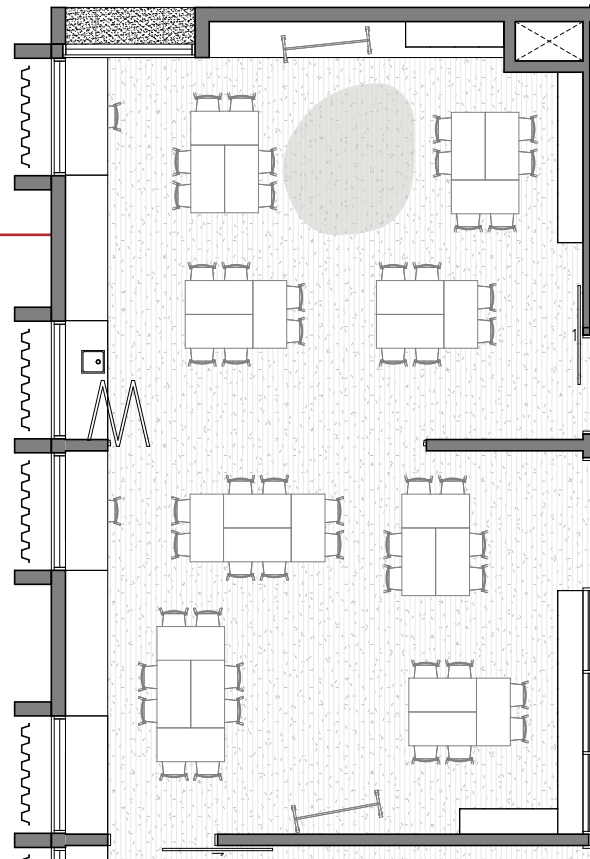
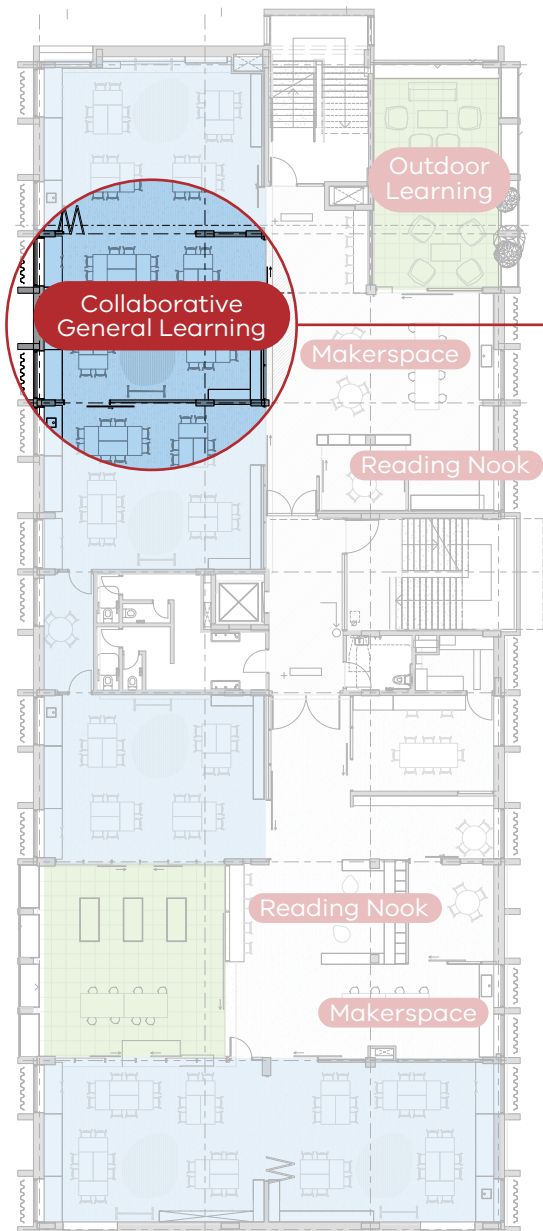


Level 1



Level 2

New Main Learning and Administration Building — level 1 & 2 detail

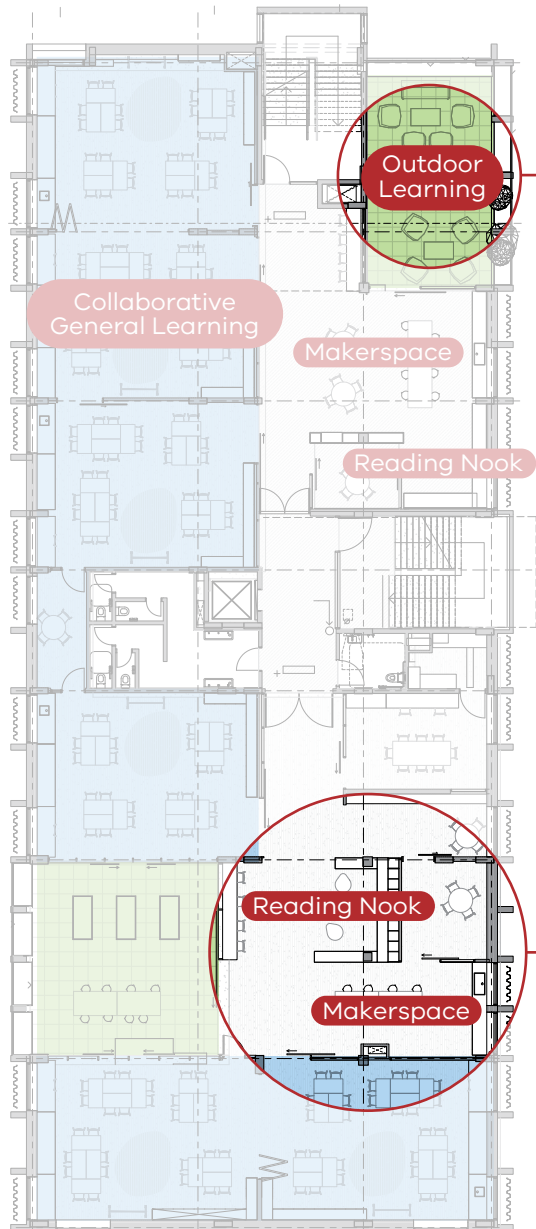


Typical collaborative general learning space

These classrooms are designed for flexibility and can be configured for a range of different in-class activities.

Each room is provided with a long back wall to accommodate teaching tools such as mobile audio visual systems and white boards. Rooms also feature an operable wall that can be opened to join two classrooms together — forming a larger space for bigger activities.

New Main Learning and Administration Building — level 1 & 2 detail



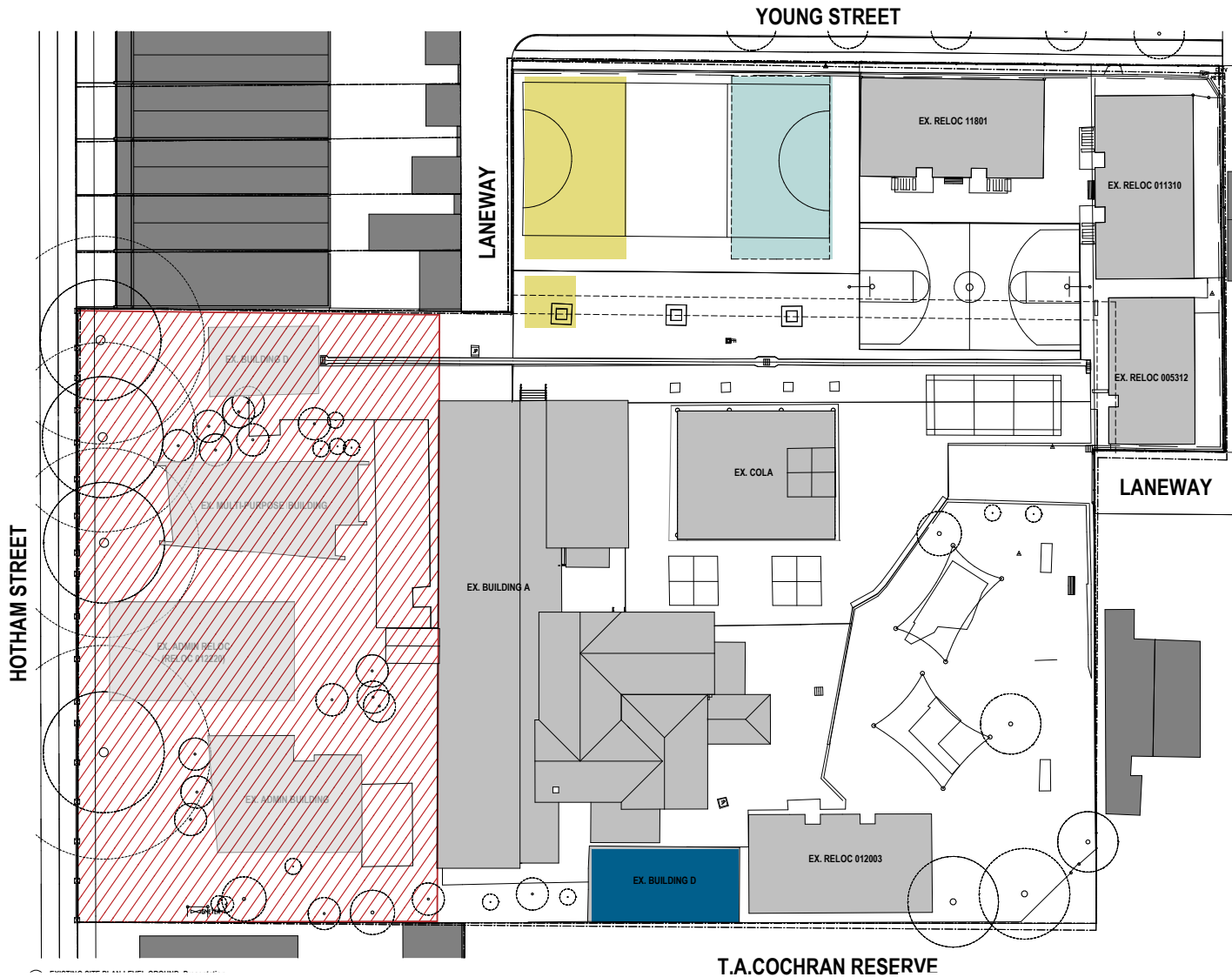
Outdoor learning areas are informal learning areas that can be protected from sun and rain. These spaces are adaptable and can be configured for a range of different activities.



Makerspaces are active, 'doing' environments that encourage both engagement and retreat.

During the build

Existing facilities at Preston South Primary School will be temporarily repurposed during the build.



Relocatable building added for additional capacity. This will be removed from site after build is complete.

Relocatable staff admin building and WC added. These will be removed from site after build is complete.

Hall to be repurposed as outside school hours care space. This building will be removed after build is complete.

Active construction site with works to be complete in December 2022. Temporary school entry via Young Street and T.A. Cochran Reserve. Existing trees along Hotham Street entry to be retained.