

There are two ways to complete your conference evaluations...

(1) Event App

(2) Website (www.PASWHA.org)

Sponsored By:



Make the Most of Your Conference Experience with the **35th NCSWH Mobile App!**

Take Notes | Create & Share Schedules | Personal Summary | Social Features

Available in the Apple [App Store](#) and the [Google Play Store](#).

*Scan the QR Code
-or-
Search "CSI Events"*



#PASWHA #35NCSWH - WWW.PASWHA.ORG

www.PASWHA.org



[HOME](#) [2023 NATIONAL CONFERENCE](#) [CURRENT INITIATIVES](#) [MORE](#)



www.PASWHA.org



[HOME](#)

[2023 NATIONAL CONFERENCE](#) ^

[CURRENT INITIATIVES](#) v

[MORE](#) v



- Welcome Page
- Agenda
- Conference App Access
- 2023 NCSWH Program Book
- Continuing Education
- Evaluations**
- 2023 Registration
- Hotel Information
- 2023 SPONSORSHIP
- Transportation /Parking
- Approved Use of Funds





Evaluation and Certificate Completion Process

Evaluation and Certificate Completion Process

Evaluations may be completed by logging into the conference app and selecting the "Evaluations" tab OR or by clicking the following link: ["Start My Evaluations."](#)

[Download PDF >](#)

Instructions for the Evaluation and Certificate Completion Process

Collaborative Solutions, Inc. (ACE Provider Approval #1348) is approved to offer social work continuing education by the Association of Social Work Boards (ASWB) Approved Continuing Education (ACE) program. Organizations, not individual courses, are approved as ACE providers. State and provincial regulatory boards have the final authority to determine whether an individual course may be accepted for continuing education credit. Collaborative Solutions, Inc. maintains responsibility for this content. ACE Provider Approval Period: 05/16/2021 - 05/16/2024.

Collaborative Solutions, Inc. is also recognized by the New York State Department of Education's State Board for Social Work as an approved provider of continuing education for Licensed Master Social Workers (LMSW) and Licensed Clinical Social Workers (LCSW) in New York State (Provider #906051).

The following criteria must be met before CE Certificates will be issued.

- Attendees must attend the session(s) of their choice in its entirety (and are encouraged to turn on their camera if attending virtually).
- Attendees must complete an evaluation for each session attended (eligible credits are noted on the agenda). - AND -
- Attendees must complete the overall conference evaluation.

All Evaluations MUST be completed by **June 16, 2023, 11:59 PM EST**. After this date and time, the evaluation platform is scheduled to lock automatically. A certificate with approved CE credits will be issued by **July 21, 2023**. However, we will start processing certificates as evaluations are completed.

Please email Theresa Nieves (Thernea@collaborativesolutions.net) if you have a high priority request due to a timeline issued by your governing body.

Step-by-Step Guidance

Step 1:
Log into your account.
You may go directly to the "Evaluations" button on the website and conference app.

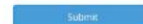
You may also login from a computer by going to the conference website under the "Evaluations" tab. If you forgot, or do not know, your password select "Forgot Password" and it will be emailed to you.

Step 2:
You should see the following screen:

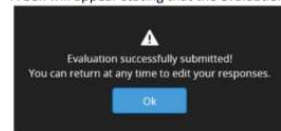
Evaluations may be completed by logging into the conference app and selecting the "Evaluations" tab OR or by clicking the following link: ["Start My Evaluations."](#)

Step 4:

Two-step Process: Complete the survey and submit the evaluation.



A box will appear stating that the evaluation has been successfully submitted.



REPEAT this step until you have completed evaluations for each session you attended.

Step 5:

Important Note: Once you have completed evaluations for the individual sessions you attended, you must click the "Submit to Complete Task" button to complete this section (located at the top, right side of the screen).

Session	Expand
8:30 AM - 12:00 PM (1)	+
1:00 PM - 3:30 PM (1)	+
3:45 PM - 5:00 PM (8)	+
5:30 PM - 7:00 PM (1)	+

Submit to Complete Task



www.PASWHA.org

Home Search for... Search Login

The 35th
National Conference on Social Work and HIV/AIDS
"35 Years Strong: How Social Work Will End the Epidemic"

MAY 24-27, 2023

More PASWHA
COLLABORATIVE SOLUTIONS GILEAD

Login

Please type in your email address and Access Key.

Log in using your username and access key. Update your password and username.

Email Address

Access Key

Login

[Forgot Access Key?](#)

User Name = Email Address Used to Register

Access = Unique Code Per Participant

"Forgot Access Key" sends your code to your personal email



www.PASWHA.org



- Welcome Page
- Agenda
- Conference App Access
- 2023 NCSWH Program Book
- Continuing Education
- Evaluations
- 2023 Registration
- Hotel Information
- 2023 SPONSORSHIP
- Transportation /Parking
- Approved Use of Funds



Deadline for Evaluations



All evaluations MUST be completed by:

June 16, 2023 before 11:59 PM EST. After this date and time, the evaluation platform is scheduled to lock automatically.

A certificate with approved CE credit(s) will be issued by:
July 21, 2023.

You may access evaluations by selecting the "Evaluations" tab through the app or online at www.PASWHA.org.

#PASWHA #35NCSWH - WWW.PASWHA.ORG

Questions?

CE Process, Conference App, and Evaluations

Email: Theresa Nabors – Theresa@collaborative-solutions.net

Cc: Nicole Brazelton - NicoleB@collaborative-solutions.net

SUBJECT: CE/EVALUATIONS

#PASWHA #35NCSWH - WWW.PASWHA.ORG