

PASWH  **NATIONAL
CONFERENCE ON
SOCIAL WORK
AND HIV/AIDS**
Professional Association of Social Workers in HIV & AIDS

— 38TH ANNUAL —
NATIONAL CONFERENCE
ON SOCIAL WORK AND **HIV AND AIDS**

from **COMPASSION** *to* **ACTION**

Renewing the spirit of service
in HIV Social Work




SAN ANTONIO, TEXAS

MAY 20-23, 2026

PROGRAM BOOK

EDUCATE. • ADVOCATE. •  COLLABORATE. • EMPOWER.

WELCOME

On behalf of the Professional Association of Social Workers in HIV/AIDS, I am honored to welcome you to the 38th National Conference on Social Work and HIV/AIDS.

This year's theme, **"From Compassion to Action,"** invites us to reflect on the powerful role compassion plays in our work—and in our world. Compassion is where social work begins: the ability to see the humanity in others, to listen deeply, and to respond with care and dignity. But compassion alone is not enough. In a time marked by division, stigma, and deep inequities in health access, compassion must move us toward action.

As professionals at the intersection of health, social justice, and human dignity, we know that HIV is never just a medical condition. It is shaped by structural barriers, social determinants of health, and systems that too often leave people behind. Compassion calls us to look beyond the diagnosis—to see the whole person, their community, their challenges, and their strengths. And it compels us to act: to advocate for equitable access to treatment, housing, mental health care, and the resources people need to thrive.

Over the next several days, you will hear from leaders in the field, engage in meaningful dialogue, and explore innovative strategies shaping the future of HIV care and prevention. But just as important, you will be surrounded by a community of colleagues who share your commitment and your calling. Together, we learn from one another, challenge one another, and strengthen the collective voice of social work in the HIV response.

At a time when compassion can feel in short supply, your work is a powerful witness to what still guides this profession—empathy, dignity, and justice. This conference is an opportunity to renew that commitment and to move from intention to impact.

Thank you for being part of this community, and for the vital work you do every day. I encourage you to engage fully, connect deeply, and leave inspired and equipped to continue advancing compassionate, equitable HIV care in your communities.

Together, we move from compassion to action.

Warm regards,
Dr. Rusty Bennett, LMSW, PhD
Executive Director
National Conference on
Social Work and HIV/AIDS



Dear PASWHA Community,

Welcome to the 38th National Conference on Social Work and HIV/AIDS. On behalf of the Board of Directors of the Professional Association of Social Workers in HIV/AIDS, it is my privilege to welcome you to this year's gathering of dedicated social workers, advocates, researchers, and community leaders.

Our theme this year, "From Compassion to Action," speaks directly to the heart of our profession. Compassion is what draws many of us to this work. It is what sustains us as we walk alongside individuals and communities affected by HIV. Yet compassion is not passive, it challenges us to respond, to advocate, and to transform systems that continue to create barriers to care and dignity.

Social workers have always played a critical role in the HIV response. We are present in clinics, housing programs, community organizations, and policy spaces, ensuring that people living with HIV are not only seen and heard, but supported with the services and respect they deserve. At a time when the world often feels divided, the compassion that guides our work remains a powerful force for connection, equity, and change.

This conference is an opportunity to learn from one another, strengthen partnerships, and reaffirm our shared commitment to compassionate, person-centered care. I hope the conversations and connections you experience here energize and inspire you as we continue working together to advance the HIV response.

Thank you for being part of this community and for the compassion and leadership you bring to this work every day.

With gratitude and solidarity,

Darin Rowles MSW, LISW
President, PASWHA



~~~~~  
**Everyone's**  
story is different.  
~~~~~



Stories bring us together in the fight to end HIV.

See how at [HelpStopTheVirus.com](https://www.HelpStopTheVirus.com)



STOP THE VIRUS.

GILEAD and the GILEAD Logo are trademarks of Gilead Sciences, Inc.
© 2022 Gilead Sciences, Inc. All rights reserved. US-UNBC-0555 07/22

TABLE OF CONTENTS:

05 Daily Agendas

App Instructions - pgs. 7 & 8

Hotel Map - pgs. 9 & 10

11 Day 1 - Wednesday, May 20 Agenda

Pre-Conference Sessions - pg. 12 & 13

Opening Plenary- pgs. 14 & 15

Breakout Session #1 - pgs. 16-19

Welcome Reception Info- pg. 19

20 Day 2 - Thursday, May 21 Agenda

Plenary Session- pg. 21-22

Breakout Session #2 - pgs. 23-24

Breakout Session #3 - pgs. 25-26

Lunch Session- pg 27

Breakout Session #4 - pgs. 28-30

Breakout Session #5 - pgs. 31-33

34 Day 3 - Friday, May 22 Agenda

Plenary Session - pg. 35

Breakout Session #6 - pgs. 36-39

Breakout Session #7 - pgs. 39-41

Breakout Session #8 - pgs. 41-43

Breakout Session #9 - pgs. 44-45

47 Day 4 - Saturday, May 23 Agenda

Roundtable Discussion: Regional Groups- pg. 48

Closing Plenary Brunch - pg. 49

Thank you to our Partners!

DAY 1 AGENDA

WEDNESDAY, MAY 20, 2026

8:00- 5:00p- Conference Registration

Los Rios Foyer

8:00- 12:00p- Pre-Conference Sessions (Pre-Registration Required)

Various

1:30- 3:30p- Opening Plenary

Regency Ballroom

3:45- 5:00p- Breakout Sessions Round #1

See pgs. 16-19 for options

5:30- 7:00p- Welcome Reception

Regency Ballroom

7:00- 5:00p- Conference Registration

Los Rios Foyer

7:00- 8:00a- Breakfast Buffet

Regency Foyer

8:00- 9:45a- Plenary Session

Regency Ballroom

10:00- 11:15a- Breakout Sessions Round #2

See pgs. 23-24 for options

11:30- 12:45p- Breakout Sessions Round #3

See pgs. 25-26 for options

12:45- 2:00p- Lunch Session *sponsored by Gilead*

Regency Ballroom



2:15- 3:30p- Breakout Sessions Round #4

See pgs. 28-30 for options

3:45- 5:00p- Breakout Sessions Round #5

See pgs. 31-33 for options

DAY 2 AGENDA

THURSDAY, MAY 21, 2026

DAY 3 AGENDA

FRIDAY, MAY 22, 2026

7:00- 8:00a- Breakfast Buffet

Regency Foyer

8:00- 9:45a- Plenary Session

Regency Ballroom

10:00- 11:15a- Breakout Sessions Round #6

See pgs. 36-39 for options

11:30- 12:45p- Breakout Sessions Round #7

See pgs. 39-41 for options

12:45- 2:00p- Lunch (On Your Own)

2:15- 3:30p- Breakout Sessions Round #8

See pgs. 41-43 for options

3:30-3:45- Snack Break

Regency Foyer

3:45- 5:00p- Breakout Sessions Round #9

See pgs. 44-45 for options

DAY 4 AGENDA

SATURDAY, MAY 23, 2026

8:00-9:00a- Coffee Service Only

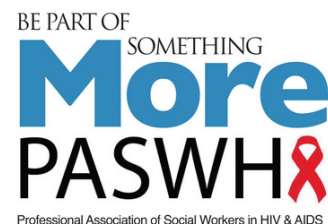
Regency Foyer

8:00- 9:00a- Roundtable Discussions: Regional Groups

Various

10:00- 12:00p- Closing Plenary Brunch

Regency Ballroom



Disclaimer: Some session descriptions and speaker bios have been shortened for this program booklet. To view full descriptions and bios, please visit www.paswha.org.

Make the Most of Your Conference Experience with the 38th NCSWH Mobile App!

Take Notes | Create & Share Schedules | Personal Summary | Social Features

1. Download the eventScribe App



SCAN ME

Scan the QR Code or go to the Apple App Store or Google Play and search for **eventScribe**



App Icon

Install and open the app. Find your event icon in the Upcoming Events (bottom row) or search for **38th NCSWH App**.

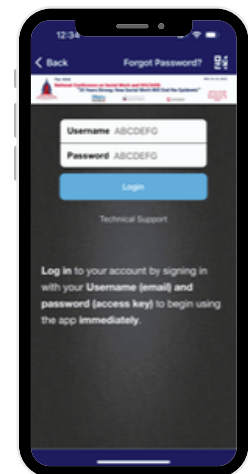


Event Icon

Tap the event icon to launch your event's app.

2. Login to the App

Log in to your account by signing in with your Username (**email**) and password (**access key**) to begin using the app immediately. **Access key is found at the bottom of the registration email.**



3. App Tips

Download the app before you go! Wi-Fi connection on-site can affect the functionality of the app.

Browse the event information and create a personal schedule by tapping on the star next to presentation titles.

Looking to receive Continuing Education Credit while at NCSWH26?

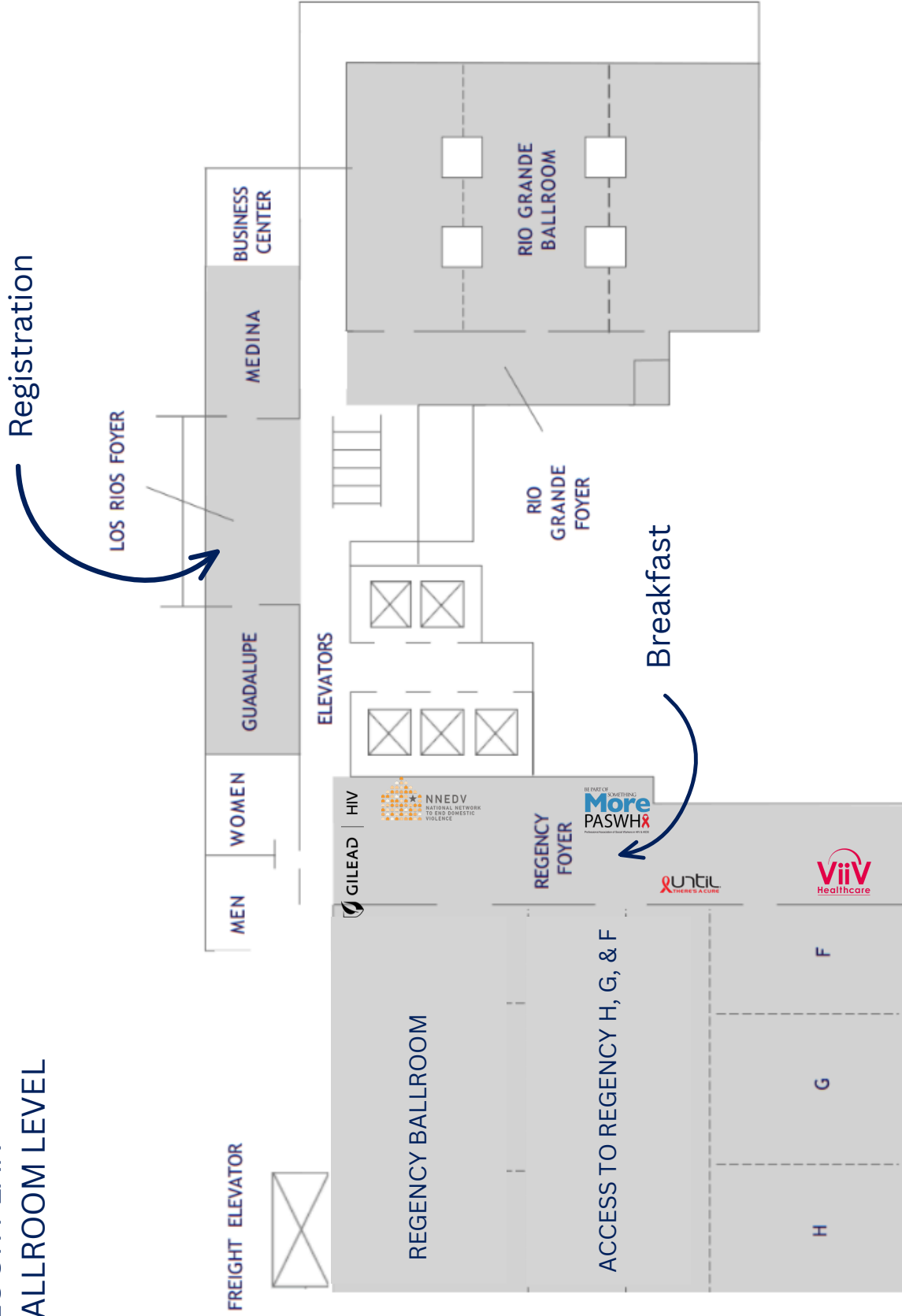
- 1. Download the Conference App**
- 2. At the beginning of each session, you will need to sign in on the check in sheet in the room.**
- 3. At the end of the session, be sure to sign yourself out.**
- 4. After the session, use the mobile app to complete the evaluations.**
- 5. CE credits will only be given with a check in/out & completed evaluation, including conference evaluation.**

*Note: If you are licensed and are receiving credits for New York- please reach out to Mary Lolling at Mary@collaborative-solutions.net.

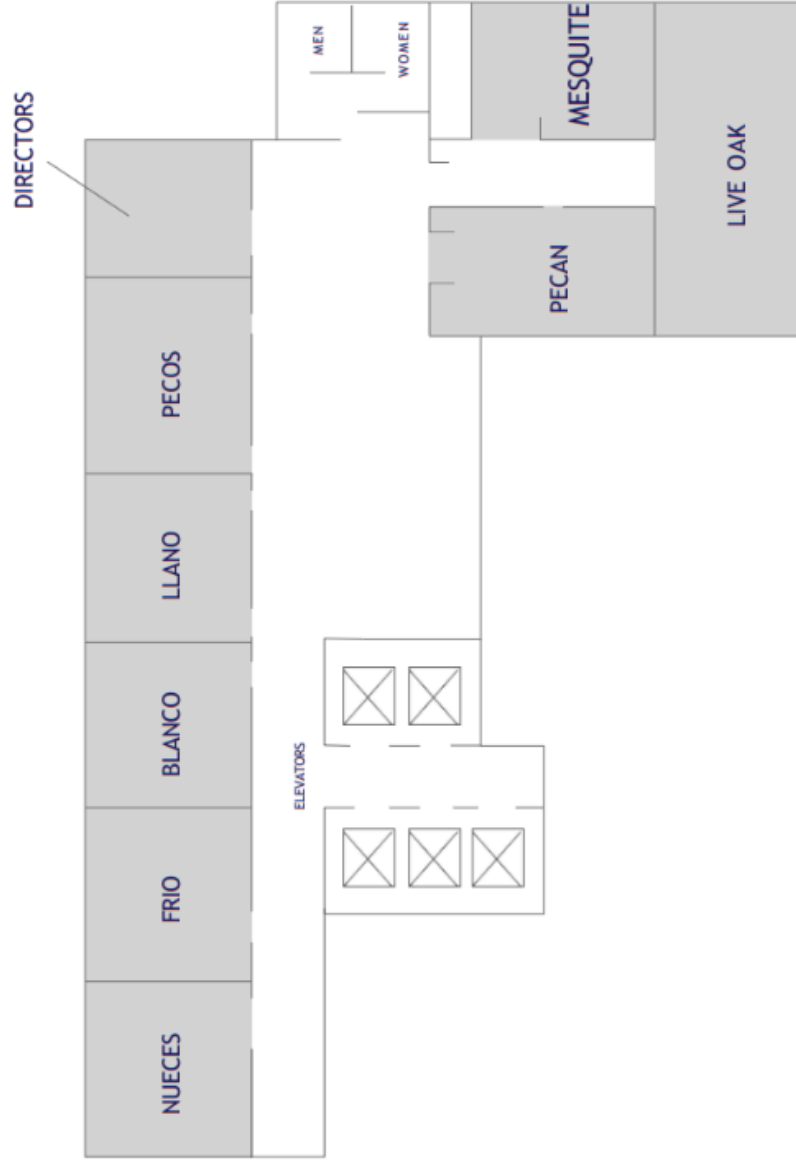


Collaborative Solutions, Inc. (ACE Provider Approval #1548) is approved to offer social work continuing education by the Association of Social Work Boards (ASWB) Approved Continuing Education (ACE) program. Organizations, not individual courses, are approved as ACE providers. State and provincial regulatory boards have the final authority to determine whether an individual course may be accepted for continuing education credit. Collaborative Solutions, Inc. maintains responsibility for this course(s). ACE Provider Approval Period: 05/16/2024 - 05/16/2027. Social workers participating in this conference will receive up to 16.25 continuing education credits.

FLOOR PLAN BALLROOM LEVEL



FLOOR PLAN
HILL COUNTRY LEVEL



DAY 1 AGENDA
WEDNESDAY, MAY 20, 2026

8:00- 5:00p- Conference Registration

Los Rios Foyer

**8:00- 12:00p- Pre-Conference Sessions
(Pre-Registration Required)**

Various

1:30- 3:30p- Opening Plenary

Regency Ballroom

3:45- 5:00p- Breakout Sessions Round #1

See pgs. 16-19 for options

5:30- 7:00p- Welcome Reception

Regency Ballroom

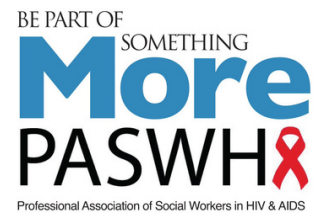
Welcome

We are excited to invite you to the Welcome Reception for the 2026 National Conference on Social Work and HIV/AIDS.

Date: Wednesday, May 20, 2026

Time: 5:30 PM – 7:00 PM

Location: Regency Ballroom



Join us as we kick off the conference with an evening of connection and community. Enjoy light hors d'oeuvres and beverages while networking with fellow attendees, speakers, and partners from across the region.

We look forward to seeing you there!

Pre-Conference Sessions

8:00- 12:00 PM

Wednesday, May 20, 2026

Pre-Registration is Required for Pre-Conference Sessions

Medical Case Management Block (1)

3.50 CE Credits

Room: Frio

Presenters: Melinda Marasch, MSW, Aspire Training & Consulting & Ryan Ayala, LCSW, MSW, Ryan Alaya LLC

The Medical Case Management (MCM) Certificate Program prepares health care and social service professionals to deliver high-quality MCM services in alignment with HRSA guidelines. Developed using best practices, research, and input from AIDS Service Organizations, Ryan White grantees, and Boston College School of Social Work, the program builds essential knowledge and clinical skills for working with diverse client populations.

The program includes nine online modules and two full-day, in-person workshops (approximately 22 total hours). Online trainings are delivered and tracked through Aspire's learning management system, allowing participants and administrators to monitor progress.

SOLHA Certification Session 1 of 4

3.50 CE Credits

Room: Medina

Presenter: Kerry Littlewood, PhD, MSW, Collaborative Solutions



This comprehensive 4-hour course is a core requirement for PASWHA's SOLHA Certification, designed to equip social workers with essential knowledge and skills for working with older persons living with HIV/AIDS. Participants will explore the intersection of aging and HIV across three critical areas: foundational competencies, health considerations, and mental health impacts. The course will cover the certification process, specialized competencies for social work practice, the effects of aging and comorbidities on health outcomes, and the unique mental health challenges—such as stigma, depression, and social isolation—faced by this population. A strong emphasis will be placed on equity-based and trauma-informed approaches to enhance care and improve long-term well-being.

Please note: Participants must preregister and submit payment to attend this session and complete certification requirements.

Pre-Conference Sessions

8:00– 12:00 PM

Wednesday, May 20, 2026

Pre-Registration is Required for Pre-Conference Sessions

Do No Harm, Do More Good: Ethical Considerations for HIV/AIDS Social Work

3.50 CE Credits

Room: Regency F

Presenters: Amy K Jacobs, MSW & Jennifer Schwartz, LMSW

HIV social work is shaped by complex relationships, evolving public health systems, and the ongoing impacts of stigma, trauma, and criminalization. In today's political climate, social workers face challenging ethical issues related to topics such as harm reduction, confidentiality, dual relationships, self-disclosure, and HIV-related laws and policies.

This interactive workshop creates space to explore real-world ethical dilemmas in HIV practice, including boundaries, data sharing, public health reporting, and client relationships. Grounded in the NASW Code of Ethics and trauma-informed care, the session draws on decades of practitioner experience and uses case examples to connect everyday challenges with ethical standards.

Participants will gain practical strategies for navigating ethical complexities, maintaining professional boundaries, and delivering compassionate, socially just care in HIV service settings.

Leadership Pre-Conference: Between Chaos and Care: Self-Leadership for HIV Social Work Leaders Navigating Uncertainty

Room: Regency G

3.50 CE Credits

Presenter: Dr. Rusty Bennett, LMSW, Ph.D, Collaborative Solutions

This interactive session explores the critical role of self-leadership for HIV social work leaders working amid constant change, chronic stress, and systemic uncertainty. Participants will examine how external pressures—such as funding instability, workforce burnout, moral distress, and evolving community needs—impact leadership capacity and personal wellbeing. Through reflective exercises and practical frameworks, the session invites leaders to reconnect with their values, strengthen emotional regulation, and cultivate resilience without sacrificing compassion or integrity.

Attendees will leave with concrete strategies for leading themselves with clarity and care, even in chaotic environments, while fostering sustainable leadership practices that support both teams and communities. The session emphasizes that effective HIV leadership begins within—by balancing accountability with empathy, urgency with presence, and service with self-compassion.

Opening Plenary Session

1:30- 3:30 PM

Wednesday, May 20, 2026

Compassion to Action — A Journey of Welcome, Faith, and Advocacy

1.00 CE Credit

Regency Ballroom

The Opening Plenary features *Beyond Belief: Surviving and Thriving with HIV*, a powerful monologue by Rae Lewis Thornton, who uses personal storytelling to explore resilience, faith, and survival while centering the humanity of HIV work.

Rae Lewis-Thorton

Rae Lewis-Thorton is an Emmy Award-winning AIDS Activist and renowned social justice advocate. She rose to national acclaim when she told her story of living with HIV/AIDS in a cover story for Essence magazine. She has been credited with changing the face of AIDS for Black women in America. The Smithsonian National Museum of African American culture has requested to catalog her groundbreaking Essence Magazine Cover.

For thirty-five years Rae has traveled worldwide in an unending crusade in the fight against HIV/AIDS. As the face of HIV/AIDS, she has been featured in Glamour, O-The Oprah Magazine, Woman's Day, Essence, Still Here Magazine- a Tina Knowles Project, Real Health Focus, Jet, Ebony, Emerge, Black Excellence, Heart and Soul, WOE, The Crisis, Poz, Test Positive Award, HIV-Plus, and countless newspaper outlets such as The Washington Post, The Dayton Daily News, The Chicago Tribune, Windy City Times, and The Chicago Sun-Times. Her credits also include many magazine and online articles on health and wellness.

She received an Emmy Award for an ongoing series of first-person reports on her life Living With AIDS for CBS-Chicago. She has been featured on national television news, online shows, and podcasts such as Huffington Post Live, Girl Trek, Divas Simply Singing! with Sheryl Lee Ralph, TV One, The Oprah Winfrey Show, TV One, Nightline with Ted Koppel, Dateline, WGN Morning News, BET, CNN, HLN News, and The Montel Williams Show. She's been featured on syndicated radio shows such as Tammi Mac Late Show, Tom Joyner Morning Show, WVON, NPR, and Jamaica's Breakfast Club.

Rae is featured in the Emmy nominated documentary, HIV and The Journey To Zero- Part One and the Journey to Zero, The Conversation- Part Three. She was also featured in Own TV six part documentary, "Time of Essence."

Rae graduated cum laude from Northeastern Illinois University. She attended McCormick Theological Seminary on a Merit Scholarship and earned her Master of Divinity degree. She received the Arthur Hayes Fellowship in Church History from McCormick upon graduating. She worked on her Ph.D. in Church History at the Lutheran School of Theology-Chicago and is an ordained minister. Rae is currently in a Doctorate of Ministry Program at the Methodist Theological School of Ohio. In 2021 Rae was the guest of President Joseph Biden at the White House observances of World AIDS Day.

Rae is a freelance writer on HIV/AIDS and Wellness. She has published three books, The Politics of Respectability, Amazing Grace: Letters Along My Journey, and her Amazon Best Seller, Unprotected: A Memoir. She is currently working on her fourth book, What I learned While Digging in Dirt.



Plenary Sponsored by:  ViiV Healthcare

Opening Plenary Session: Panel Discussion

1:30- 3:30 PM

Wednesday, May 20, 2026

Compassion to Action — A Journey of Welcome, Faith, and Advocacy

Regency Ballroom

The session concludes with **Advocacy & Empathy: Meeting the Mental Health Needs of the Latine Community**, a panel examining the intersections of culture, LGBTQ+ identity, mental health, and HIV, and the social and policy factors shaping outcomes for vulnerable communities.

Panelist: Eric Cartagena, LMSW

Eric Cartagena, LMSW, is the Director of Client Services at the San Antonio AIDS Foundation. He is a certified TBRI practitioner and has worked in the helping field for over 10 years. Eric's experience is in working with foster youth and people living with HIV, and he believes in the human centered approach to helping clients.



Panelist: Lex Loro, MS, CHW

Lex Loro, MS, CHW (they/she) is a queer justice activist and community health worker with more than 13 years of experience in LGBTQ+ health education, advocacy, and training. They serve as Executive Director of the Pride Center San Antonio, where they developed a free, low-barrier counseling program serving hundreds of people each year.

Lex holds a BA from American University and an MS in Marriage and Family Therapy from Our Lady of the Lake University. They are currently Co-Principal Investigator on the Queer Health is the Ultimate Wealth study funded by the Robert Wood Johnson Foundation, focused on LGBTQ+ health equity in South Texas.



Panelist: Douglas Cathey, MSW

Medical Case Manager
Alamo Area Resource Center (AARC)



Panelist: Cherise Rohr- Allegrini, Ph.D, M.P.H.

Chief Executive Officer of the San Antonio AIDS Foundation

Dr. Rohr-Allegrini joined SAAF in July 2020, with over 20 years of experience in public health. After working in Tropical Disease research, Dr. Rohr-Allegrini joined San Antonio Metro Health District's Public Health Emergency Preparedness as an Infectious Disease Epidemiologist and Pandemic Coordinator. She moved on to the Texas Department of State Health Services, Region 8 as Communicable Diseases Manager where she also directed the HIV/STD and Tuberculosis programs. In 2012 she took on the role of San Antonio Research Director for The Immunization Partnership (TIP). Since coming to SAAF, she has championed expansion of HIV clinical prevention and LGBTQ+ health services.



Moderator: Jake Ledesma, LMSW

Director of Case Management /Care Coordination
Alamo Area Resource Center (AARC)



Special Agenda Items

3:30- 5:00 PM

Wednesday, May 20, 2026

Medical Case Management Block (2)

1.5 CE Credits

Room: Frio

Presenters: Melinda Marasch, MSW & Ryan Ayala, LCSW, MSW

This session is designed exclusively for members of the Medical Case Management Cohort. It offers a dedicated space for current participants to engage in peer learning, deepen their skills, and explore best practices together. Please note: This is a closed session for cohort participants only.

Breakout Session Round #1

3:45-5:00 PM

Wednesday, May 20, 2026

What Compassion Misses: Centering Black Women's Experiences in HIV and Sexual Healthcare

1.25 CE Credits

Room: Pecan

Presenters: Amber Sophus, PhD - University of Texas at San Antonio & Kim Canady- Conversations with Kim

Black women's engagement in sexual and reproductive healthcare including HIV prevention and treatment is shaped by intersecting systems of racism, sexism, and sexualization that manifest through discrimination, microaggressions, and medical mistrust. While overt acts of racism may be less visible in contemporary healthcare settings, subtle interpersonal dynamics and communication failures continue to undermine patient-provider relationships and limit engagement in care. Thus, this workshop will highlight how these systems contribute to delayed HIV testing, inconsistent prevention behaviors, and avoidance of care among Black women. Despite these challenges, Black women employ resilience strategies such as self-advocacy, seeking race- and gender-concordant providers, and navigating care across fragmented systems often at personal and emotional cost. Participants will explore person-first centered approaches to care that prioritize and honor the lived experience, personal autonomy as well as cultural context. The workshop centers real world strategies for showing compassion in action while supporting individuals navigating complex social and political environments, particularly in southern states.

Breakout Session Round #1

3:45–5:00 PM

Wednesday, May 20, 2026

Delivering Best Outcomes: Comprehensive Care Coordination and Supporting Feeding Choices to Reduce Perinatal HIV Transmission **1.25 CE Credits**

Room: Rio Grande Center

Presenters: Sarah Marshall, MSW & Jennifer Schoenberg, MSW - Children's Minnesota

Since 2003, the Children's Minnesota Perinatal HIV Program has supported pregnant people living with HIV through coordinated, person-centered care grounded in social work principles. Funded by the Ryan White HIV/AIDS Program, the program integrates medical case management, care coordination, and referrals to address medical and social needs.

Guided by recommendations from the Fetal Infant Mortality Review HIV Case Review Team and the 2023 infant feeding guidelines, the program works with partners including the Minnesota Department of Health to build statewide provider capacity and support informed, equitable infant feeding decisions for people living with HIV.

Funny seeing you here: Navigating Dual Relationships and Managing Ethical Conflicts in Community-Based HIV Practice **1.25 CE Credits**

Room: Regency H

Presenters: Patrick Padgen, LMSW - NYC DOHMH & Amanda Phi, MPH - NYC Health Department

HIV social workers are often deeply embedded in the communities they serve, and for many—especially LGBT practitioners—professional and personal worlds can overlap. Encounters with clients in social, faith, or online spaces can strengthen trust but also raise ethical challenges around boundaries, confidentiality, dual relationships, and self-disclosure.

Using real-world scenarios, this session explores these ethical tensions and introduces a practical decision-making framework grounded in the National Association of Social Workers Code of Ethics. Participants will learn strategies for assessing boundary crossings, managing dual relationships, and balancing cultural humility with professional responsibility while maintaining client dignity and trust.

Breakout Session Round #1

3:45-5:00 PM

Wednesday, May 20, 2026

Purple Orchid: Master Peer Specialists (Bridging the Gap Between Lived Experiences for WLHIV) 1.25 CE Credits

Room: Rio Grande West

Presenter: Regina L. Livingston - Unspoken Treasure Society

The Purple Orchid Master Peer Specialist Program is a community-driven initiative focused on closing gaps in healthcare for Black and Brown cisgender and trans femme individuals, especially in the context of HIV prevention and care. Developed by the Unspoken Treasure Society, it centers peer-led advocacy, intensive cohort-based training, and trauma-informed strategies. The program equips participants with clinical knowledge, emotional intelligence, and self-care tools, aiming to challenge systemic barriers and transform those most affected by the HIV epidemic into empowered leaders and advocates.

Rebuilding From the Inside Out: Lived Experience, Peer Workforce Development, Leadership, and the Renewal of Compassionate HIV Practice 1.25 CE Credits

Room: Regency F

Presenters: Terriell L. Peters - Terriell Peters Consulting, LLC, Alan Rice, MSW & Thalia M. Santos - VNSHealth Health Plans- Select Health

This session explores how compassion becomes ethical, policy-informed action in HIV social work through leadership, peer workforce development, and lived experience.

Using Texas as a case example, it examines how stigma, criminalization, housing instability, and funding constraints shape practice and decision-making. Drawing on applied experience with VNS Health, participants will engage in reflection and case discussion to identify practical strategies for ethical leadership, peer integration, and workforce resilience in challenging systems.

Breakout Session Round #1

3:45-5:00 PM

Wednesday, May 20, 2026

The Time Was Yesterday: Radically Centering Consumer Engagement

1.25 CE Credits

Room: Regency G

Presenters: Katrina L. Balovlenkov, LCSW - Columbia University School of Social Work, Graham Harriman - Graham A Harriman LLC, & Darnell Duwyenie-Hodges- Golden Rainbow

This presentation explores how HIV social work can move from inclusion to shared power by centering lived experience in leadership and decision-making.

It challenges providers without lived experience to shift from speaking for communities to creating conditions where people living with HIV lead policy, research, and systems change. The framework emphasizes power-sharing, accountability, and using professional access to reduce barriers and prevent tokenization.

Participants will learn practical strategies for embedding compensated leadership, shared decision-making, and community-defined outcomes to build more just, responsive HIV systems.

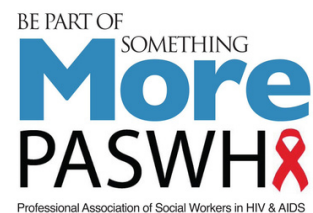
Welcome

We are excited to invite you to the Welcome Reception for the 2026 National Conference on Social Work and HIV/AIDS.

Date: Wednesday, May 20, 2026

Time: 5:30 PM – 7:00 PM

Location: Regency Ballroom



Join us as we kick off the conference with an evening of connection and community. Enjoy light hors d'oeuvres and beverages while networking with fellow attendees, speakers, and partners from across the region.

We look forward to seeing you there!

DAY 2 AGENDA
THURSDAY, MAY 21, 2026

7:00- 5:00p- Conference Registration

Los Rios Foyer

7:00- 8:00a- Breakfast Buffet

Regency Foyer

8:00- 9:45a- Plenary Session

Regency Ballroom

10:00- 11:15a- Breakout Sessions Round #2

See pgs. 23-24 for options

11:30- 12:45p- Breakout Sessions Round #3

See pgs. 25-26 for options

12:45- 2:00p- Lunch Session *sponsored by Gilead*

Regency Ballroom



2:15- 3:30p- Breakout Sessions Round #4

See pgs. 28-30 for options

3:45- 5:00p- Breakout Sessions Round #5

See pgs. 31-33 for options

Plenary Session

8:00- 9:45 AM

Thursday, May 21, 2026

Community at the Center: Solutions That Work and Voices That Lead Regency Ballroom

1.00 CE Credit

This plenary brings together leaders from policy, public health, and community systems to examine progress and ongoing challenges in HIV advocacy and care at state and local levels.

Through a facilitated conversation, panelists will share successes in expanding access, strengthening community-driven solutions, and advancing HIV policy, while also addressing barriers such as funding constraints and system-level gaps.

Grounded in frontline experience, the session highlights practical strategies and lessons learned from collaborative, community-centered approaches to improving HIV outcomes.

Panelist: Lonnetta Wilson, LBSW

Lonnetta Wilson is a social worker, community organizer, and public health leader serving as HIV Initiatives Program Manager at the Tarrant County HIV Administrative Agency. She leads implementation of federally funded efforts to end the HIV epidemic and reduce new infections.

She is active in regional and local HIV planning and health equity initiatives, including leadership and advisory roles focused on improving access to HIV services for all communities. She is committed to reducing stigma and advancing equitable care.



Panelist: Rep. Venton Jones, MSc

Mr. Hill-Jones is the founder and CEO of the Southern Black Policy and Advocacy Network, focused on addressing health, social, and economic disparities impacting Black communities in the U.S. South through training, education, advocacy, and mobilization.

He has held leadership roles with major national HIV and health equity organizations, managing large-scale public health programs and advancing policy and coalition-building efforts.

He also serves on federal advisory committees and is active in local HIV planning and civic leadership in Dallas, Texas.



Plenary Session

8:00-9:45 AM

Thursday, May 21, 2026

Community at the Center: Solutions That Work and Voices That Lead

Regency Ballroom

1.00 CE Credit

Panelist: Rachel Sanor, LMS, MBA

Rachel Sanor, originally from San Antonio, Texas, spent 12 years at CentroMed San Antonio as a grant writer and later Director of Specialty Services within the Ryan White program. She holds a bachelor's in social work from the University of Oklahoma, a master's in social work from Our Lady of the Lake University, and an MBA from Webster University.

Rachel now works in public health as the HIV Care and Medications Unit Director at the Texas Department of State Health Services. She oversees statewide HIV programs, including medication assistance and insurance supports, with a focus on improving access, using data to guide decisions, and ensuring systems are equitable and responsive.

She collaborates with teams, community partners, and policymakers to translate policy into practice, with a strong interest in making public health systems simpler, more transparent, and more client-centered for those most impacted by HIV.



Moderator: Will Ramirez, MPA

Will E. Ramirez, MPA is the Director of Public Policy & Advocacy at the Southern AIDS Coalition, where he leads regional and federal efforts to address HIV-related disparities across the Southern United States. His work focuses on the intersection of policy, narrative, and community engagement, with particular attention to how political and social environments shape access to care and health outcomes.

With a background in health policy, targeted advocacy, education, and coalition-building, Will works closely with policymakers, public health leaders, providers, and community organizations to improve HIV prevention and treatment systems while centering the needs of communities most impacted. His recent work examines the often-overlooked experiences of Black immigrant communities and how shifting immigration narratives influence trust, engagement, and care delivery.

Will brings a practical, nonpartisan approach to health equity, translating complex policy and social dynamics into insights that support providers and frontline professionals in delivering more responsive, community-informed care.



Special Agenda Items

9:45- 12:45PM

Thursday, May 21, 2026

Medical Case Management Block (3)

2.5 CE Credits

Room: Frio

Presenters: Melinda Marasch, MSW & Ryan Ayala, LCSW, MSW

This session is designed exclusively for members of the Medical Case Management Cohort. It offers a dedicated space for current participants to engage in peer learning, deepen their skills, and explore best practices together. Please note: This is a closed session for cohort participants only.

Breakout Session Round #2

10:00-11:15 AM

Thursday, May 21, 2026

Beyond Incentives: What Motivates Client in Quality Improvement When Pizza and Gift Cards Don't?

1.25 CE Credits

Room: Rio Grande West

Presenters: February D'Auria, LMSW & Nia Holden - New York State Department of Health - AIDS Institute

This interactive workshop helps HIV service providers strengthen meaningful client involvement in Quality Improvement activities within Ryan White HIV/AIDS Program expectations.

Grounded in self-determination theory, it explores how supporting autonomy, competence, and connection can increase authentic client engagement. Participants will learn practical strategies for elevating client voice, co-designing improvements, and building more equitable partnerships in care.

The session includes hands-on tools and exercises to help programs move beyond token incentives toward sustainable, client-led quality improvement that improves HIV outcomes.

SOLHA Certification Session 2

1.25 CE Credits

Room: Medina

Presenter: Kerry Littlewood, Ph.D, MSW - Collaborative Solutions



This session is designed exclusively for members of the SOLHA Certification. It provides a focused environment for those enrolled in the program to connect, reflect, and grow in their leadership with those aging with HIV/AIDS. Please note: This is a closed session for cohort participants only.

Breakout Session Round #2

10:00-11:15 AM

Thursday, May 21, 2026

Ethical Practice: Advancing Human Rights and Promoting Equity 1.25 CE Credits

Room: Regency G

Presenters: Evelyn P. Tomaszewski, MSW - George Mason University & Terry Tauger, MSW, LICSW - Hennepin County Human Services and Public Health & Lisa E Cox, PhD, LCSW, MSW - Stockton University

Social workers are committed to advancing social justice and human rights, yet ongoing policy and structural changes continue to create harm, stigma, and barriers for the communities they serve.

Rooted in social work ethics and a human rights framework, this session explores how practitioners can use their roles to honor lived experience, protect dignity, and advance equity in HIV and broader health and social systems.

From Compassion Fatigue to Compassion Amplified: Practical Uses of AI to Sustain HIV Social Work Practice 1.25 CE Credits

Room: Rio Grande East

Presenters: Carmen Julious, MSW - PALSS, Inc

HIV social workers are facing growing burnout and administrative demands that reduce time for direct client care.

This interactive workshop explores how ethical, intentional use of AI can reduce administrative burden while preserving relationship-centered practice. Participants will reflect on high-burden tasks, review real-world use cases, and apply an ethical framework focused on confidentiality, consent, and bias.

Attendees will leave with practical tools to guide safe AI use in HIV social work.

Trauma Informed Overdose Prevention and Reversal 1.25 CE Credits

Room: Regency H

Presenter: Emily Burchell, BSW - Multnomah County Health Department

Despite declining overdose deaths, more than 80,000 preventable deaths occurred in 2024. Social workers are uniquely positioned to support both overdose reversal and prevention.

This session provides practical, trauma-informed harm reduction training, including opioid basics, how Narcan works, and step-by-step overdose response (including rescue breaths, CPR, and AED use).

Participants will practice responding through role-play and learn prevention strategies such as safer use practices and connecting clients to resources like Narcan. The session also addresses minimizing trauma during response and supporting provider self-care after overdose events.

Breakout Session Round #3

11:30- 12:45 PM

Thursday, May 21, 2026

Going Beyond Data to Care: Focusing on Re-engagement and Maintenance in Care

Room: Rio Grande West

1.25 CE Credits

Presenters: Andrew W. Stubblefield, MD, MPH, Kelly Fuller, MSW, & Chad Knight, MSW - Alabama Department of Public Health

HIV care requires ongoing engagement, yet nearly half of people diagnosed with HIV in Alabama were not retained in care in 2024.

In response, the Alabama Department of Public Health expanded its Data to Care efforts through the HIV Re-engagement Program, using licensed social workers and community referrals to identify and reconnect clients who have fallen out of care or missed appointments. Early results show strong success in re-engagement and retention.

This panel shares how the program was implemented, early outcomes, lessons learned, and practical tools for improving HIV care continuity.

Translating Vision into Practice: The Development of the HIV/AIDS Virtual Summer Research Institute for Helping Professionals

1.25 CE Credits

Room: Regency F

Presenters: Dennis Corbin, MSW, PhD- Fayetteville State University, Erica Campbell, MSW, PhD- North Carolina A& T State University, & Michelle Bates- Fayetteville State University

The HIV/AIDS Virtual Summer Research Institute for Helping Professionals is a virtual training program designed to address HIV-related disparities affecting LGBTQI+, Black and Indigenous, and rural communities.

It equips social workers, counselors, and allied professionals with practical skills to improve HIV prevention, testing, treatment, and care access. Through interactive learning and applied activities, participants explore how stigma, discrimination, poverty, and geographic barriers shape outcomes and develop strategies to advance equity in HIV care.

SOLHA Certification Session 3

1.25 CE Credits

Room: Medina

Presenter: Kerry Littlewood, Ph.D, MSW - Collaborative Solutions



This session is designed exclusively for members of the SOLHA Certification. It provides a focused environment for those enrolled in the program to connect, reflect, and grow in their leadership with those aging with HIV/AIDS. Please note: This is a closed session for cohort participants only.

Breakout Session Round #3

11:30- 12:45 PM

Thursday, May 21, 2026

Supervision is Critical in Medical Case Management

1.25 CE Credits

Room: Rio Grande Center

Presenter: Gabriel Silva, MSW - Positive Impact Health Centers

Medical case managers are essential to HIV care but often navigate complex, high-acuity situations that can be challenging, especially for newer staff.

This session highlights effective supervision as a critical support for improving decision-making, ethical practice, and reducing burnout and secondary trauma. Grounded in trauma-informed, strengths-based approaches, supervision is framed as key to both workforce sustainability and better client outcomes.

Participants will engage in small-group case discussions to explore supervisor-supervisee dynamics using a culturally responsive framework.

Transforming Together Through Trauma Informed Care - A TIC organizational change intervention

1.25 CE Credits

Room: Rio Grande East

Presenters: Samira Ali, Ph.D, Lladira Aguilar, MSW, & Titan Capri - University of Houston

The U.S. South bears a disproportionate burden of HIV, accounting for 38% of the population but 52% of new diagnoses, with Black and Latinx communities most impacted due to structural racism, stigma, and under-resourced systems.

People living with HIV in the South also experience lower retention in care, higher viral loads, and poorer survival—outcomes strongly linked to widespread trauma and trauma-related barriers within both systems and services.

This workshop introduces a trauma-informed organizational change model from Texas, highlighting how HIV service organizations can implement and sustain trauma-informed care to improve engagement, equity, and outcomes in high-burden settings.

LUNCH SESSION

12:45- 2:00 PM

Thursday, May 21, 2026

Narrowing Care Gaps and Ending the HIV Epidemic

Room: Regency Ballroom

Presenter: Tony Trinh, MD, MPH, AAHIVE - Gilead Science



Bridging care gaps in the HIV care continuum, this presentation will review current HIV epidemiology in the United States, examine gaps across the HIV care continuum, and highlight missed opportunities in diagnosis, linkage, and retention in care. The session will underscore the importance of routine HIV screening and timely engagement in care, and will discuss evidence-based strategies—including rapid initiation and re-initiation of antiretroviral therapy—to reduce HIV transmission through sex and help narrow persistent gaps in HIV care.

Scan QR code for session evaluation.



<https://www.paperSurvey.io/s/yxka08>

Luncheon Sponsored by Gilead



Special Agenda Items

2:15- 5:00 PM

Thursday, May 21, 2026

Medical Case Management Block 4

2.5 CE Credits

Room: Frio

Presenters: Melinda Marasch, MSW & Ryan Ayala, LCSW, MSW

This session is designed exclusively for members of the Medical Case Management Cohort. It offers a dedicated space for current participants to engage in peer learning, deepen their skills, and explore best practices together. Please note: This is a closed session for cohort participants only.

Breakout Session Round #4

2:15-3:30 PM

Thursday, May 21, 2026

Beyond the Apartment Door: Ethical, Practical, and Clinical Lessons from Providing FBH Housing to People With HIV Exiting Prisons 1.25 CE Credits

Room: Rio Grande West

Presenter: Tourgenia G. Greene, LMSW- View Point Health

Housing is a key driver of HIV health outcomes, yet people leaving incarceration often face instability, stigma, and urgent needs to reestablish care and medication adherence.

This session presents a facility-based housing and supportive services model for justice-involved individuals living with HIV who are discharged without stable housing. It explores the realities of crisis housing operations, including behavioral health needs, shared-living challenges, harm reduction, and maintaining safety and structure.

Participants will learn how multidisciplinary coordination supports stabilization, viral suppression, and successful transitions to permanent housing through trauma-informed, real-world practice strategies.

From Internalized Stigma to Empowered Living: A Trauma-Informed, Resilience-Based Intervention Model for Adults with Perinatally Acquired HIV 1.25 CE Credits

Room: Regency F

Presenter: Shayla Knighton-Black, MPH - Hands United / Manos Unidas

This is an emerging, theory-informed framework designed to address internalized HIV-related stigma among adults with perinatally acquired HIV (ALPHIV). Adults who have lived with HIV since birth often experience layered stigma shaped by early medical trauma, lifelong disclosure demands, identity conflict, and treatment fatigue, factors consistently associated with poorer mental health outcomes, challenges with medication adherence, and disruptions in long-term engagement in care. Despite these documented needs, limited practice-oriented guidance exists for social workers and HIV service providers working with this population.

This session advances compassion into action by offering a theory-informed, practice-grounded framework that equips social workers with practical tools to recognize and address internalized HIV-related stigma in their work. By focusing on narrative reflection, cognitive reframing, and trauma-informed facilitation, the session supports providers in moving beyond awareness toward intentional, responsive practice that affirms identity, strengthens self-efficacy, and supports sustained engagement in care.

Breakout Session Round #4

2:15-3:30 PM

Thursday, May 21, 2026

Healing the Trauma Legacy for Elders with HIV: Practical Approaches to Supporting Survivors of Historical Trauma.

1.25 CE Credits

Room: Regency G

Presenter: Elizabeth Elwood, LCSW - Multnomah County

This session explores the impact of historical and collective trauma on long-term survivors of HIV/AIDS, as well as trauma experienced by those more recently diagnosed through stigma and media. It frames the AIDS epidemic through historical trauma and social identity theory.

Participants will learn how trauma affects the body and contributes to disconnection, substance use, anxiety, and poorer health outcomes, with a focus on an aging HIV population. The session introduces somatic and mind-body strategies to support healing and regulation.

Attendees will also practice brief techniques to reduce nervous system activation through a shared, experiential learning process.

Integrating Routine HIV/HCV Screening into the Emergency Department: Social Work Roles and Implementation Lessons

1.25 CE Credits

Room: Rio Grande East

Presenters: Bianca Hannon, MSW, Emma Sizemore, MD, MPH, Andrew Pendley, MD, MBA- Emory University Hospital & Tia Copeland, MSW

Routine opt-out HIV and HCV screening in emergency departments can improve early detection and linkage to care, but implementation in high-volume settings presents workflow challenges.

This session shares an ED-based screening model where social workers are embedded to support patient engagement, results disclosure, trauma-informed counseling, and linkage to follow-up care. Early results show improved screening uptake and strong linkage outcomes.

Participants will map their own workflows to identify barriers and opportunities to integrate social work into screening processes and strengthen health equity in their settings.

Breakout Session Round #4

2:15-3:30 PM

Thursday, May 21, 2026

Mr. Robot, MSW, Artificial Emotional Intelligence (AI): Thinking about how social workers can utilize AI in HIV prevention and care, ethically and effectively

1.25 CE Credits

Room: Regency H

Presenters: Patrick Padgen, LMSW - NYC DOHMH & Amanda Phi, MPH - NYC Health Department

AI is rapidly shaping health and human services, and HIV social workers are increasingly encountering its use in care, documentation, and mental health support.

This session explores how AI can be ethically integrated into HIV social work to strengthen care coordination, reduce administrative burden, and support outreach, assessment, and program planning—while preserving human connection in client care.

It also examines key ethical risks, including bias, privacy, surveillance, and equity concerns for marginalized communities. Through interactive discussion, participants will explore how to apply AI responsibly in ways that align with social work values and advance equitable HIV care.

Exploring Internalized Stigma in Adults with Perinatally Acquired HIV: Stories, Trends, and Care Barriers

1.25 CE Credits

Room: Regency F

Presenter: Shayla Knighton-Black- Florida A&M

Adults living with perinatally acquired HIV (ALPHIV) are an increasingly visible yet understudied population in HIV care. This session explores how internalized stigma shapes their treatment engagement, identity development, and access to services, drawing on emerging literature and a developing dissertation.

Lifelong exposure to medical systems, secrecy, involuntary disclosure, and stigma can impact mental health, self-worth, adherence, and retention in care. Structural barriers—such as housing instability, food insecurity, transportation challenges, and limited culturally responsive services—further compound these effects.

The presentation highlights key stigma patterns, intersections with structural factors, and lived experiences of ALPHIV. Attendees will explore implications for social work practice, including trauma-informed and stigma-responsive strategies, and leave with actionable approaches to strengthen engagement and retention in care.

Breakout Session Round #5

3:45– 5:00 PM

Thursday, May 21, 2026

Bridging the Gap: Harnessing Community Resources to Alleviate Burnout Among Social Workers Serving Individuals Impacted by HIV

1.25 CE Credits

Room: Rio Grande West

Presenters: Monique Jones & Nelicia Griffith, LMSW, AvitaCare Atlanta

Social workers supporting individuals and communities affected by HIV often navigate fragmented or limited resources, increasing the risk of burnout and moral distress. This session explores how strengthening, coordinating, and promoting community resources can support HIV social workers while improving client outcomes.

Using practice-based examples, participants will learn strategies to build partnerships, enhance referral networks, and advocate for more accessible resources. Aligned with the theme “Compassion to Action,” the session offers practical tools to sustain both the workforce and the communities they serve.

From Data to Action: An Interactive Workshop on Using Quality Improvement Tools to Improve Care and Outcomes

1.25 CE Credits

Room: Rio Grande Center

Presenters: February D’Auria, LMSW & Nia Holden - New York Department of Health - AIDS

This proposal outlines a transformative approach to improving HIV/AIDS care and advocacy through the integration of Artificial Intelligence (AI) and Big Data. By leveraging cutting-edge technologies, this initiative aims to enhance early detection, personalized treatment, resource allocation, and advocacy efforts to address health disparities and improve outcomes for individuals living with or at risk of HIV/AIDS.

Is the Attraction in the Room with Us? Transference, countertransference and ethical practice

1.25 CE Credits

Room: Regency F

Presenters: Amy Jacobs, MSW - University of Michigan & Jennifer Schwartz, LMSW- Behavioral Health Program Manager

Have you ever experienced romantic or sexual feelings toward or from a client but didn’t feel safe discussing it? You’re not alone. This workshop creates a supportive space to explore erotic transference and countertransference—topics often overlooked in training. Facilitators will review relevant ethics, share case studies, and guide discussion.

Participants will gain practical strategies to manage boundaries, navigate discomfort, and remain professional. Open to all providers and designed for honest, thoughtful conversation.

Breakout Session Round #5

3:45- 5:00 PM

Thursday, May 21, 2026

Caring for Ourselves in the World of HIV and Defunding Programs- An Experiential Group Meeting **1.25 CE Credits**

Room: Pecan

Presenter: Alan Rice, MSW - VNSHealth Health Plans

Since the start of the HIV/AIDS epidemic, social workers have led care for those affected, supported by strong peer networks—from early groups in San Francisco and NYC to this conference community.

Join “Taking Care of Ourselves,” a long-running workshop led by a veteran in the field since 1983, sharing personal experience and the creation of a Caring for Ourselves group at VNSHealth.

Participants will explore strategies for coping with stress and burnout and sustaining themselves in demanding environments. Open to all connected to HIV.

Examining How Trauma, Religious Trauma, Stigma and Shame Impact Spirituality, Health, and HIV Prevention Strategies **1.25 CE Credits**

Room: Regency H

Presenter: REV. Dr. Tommie L. Watkins, Jr., MSW - The Watkins Group, LLC

There has been no real discussion concerning Race-Based Traumatic Stress (RBTS), trauma, and its impact on HIV prevention and wellness for Black Men. Though discrimination in all its forms is indeed a historically rooted factor of both past and present life specifically in American society, race based discrimination is spoken of, but not HIV-related stigma still fails to be adequately addressed. What, then, can be an accurate definition of racism, sexism, classism and the intersection of HIV-stigma and trauma? What then are the individual, systemic, and societal implications for a non-binary, non-heterosexual, non-white, non-male person? Given the detrimental effects of shame, stigma, and trauma, what are the unique mental, physical, emotional, spiritual, and sexual traumatic induced burdens that some individuals experience and internalize just by existing in American society?

This Institute will examine, from various perspectives, the challenges that come along with facing and overcoming trauma, mental health diagnosis, and the intersection of HIV-related stress and trauma that stems from direct, racially biased and classist actions.

Breakout Session Round #5

3:45- 5:00 PM

Thursday, May 21, 2026

Thriving with Grace: HIV, Aging, Self-Care, and Equity for Women Living with HIV

1.25 CE Credits

Room: Rio Grande West

Presenters: Kiona Washington, MSW & Felicia Matheney, MSW - PALSS

As advances in antiretroviral therapy extend life expectancy, increasing numbers of women are aging with HIV. In the United States, more than half of people living with HIV are age 50 and older, with Black and other minority women facing disproportionate health, social, and structural challenges. Aging women with HIV commonly experience multimorbidity, menopause-related symptoms, mental health concerns, social isolation, and persistent stigma-burdens intensified by racism, sexism, ageism, poverty, and medical mistrust.

This session examines what it means to thrive with grace while aging with HIV, positioning self-care as both an individual and systemic responsibility. Participants will explore gaps in culturally responsive, aging-affirming care, the role of faith and community as protective factors, and the impact of stigma across healthcare, family, and faith settings. Emphasis is placed on the professional role in promoting holistic well-being, advocacy, and equity-moving beyond viral suppression to dignity, empowerment, and quality of life.

When Safety Interferes with Care

1.25 CE Credits

Room: Rio Grande East

Presenter: Ashley Slye - National Network to End Domestic Violence

For survivors of domestic violence, safety is a key determinant of HIV care. Violence and trauma are linked to poorer outcomes, including lower treatment adherence and reduced viral suppression.

Safety concerns often extend beyond intimate partner violence to include legal, institutional, and systemic risks—such as HIV criminalization, policing, and stigma—which can deter engagement in care.

This session explores the intersection of DV and HIV through a trauma-informed, survivor-centered lens.

Participants will examine how safety impacts care and gain practical strategies to support engagement, integrate safety planning, and center survivor autonomy across settings.

Session Sponsored by National Network to End Domestic Violence



DAY 3 AGENDA

FRIDAY, MAY 22, 2026

7:00- 8:00a- Breakfast Buffet

Regency Foyer

8:00- 9:45a- Plenary Session

Regency Ballroom

10:00- 11:15a- Breakout Sessions Round #6

See pgs. 36-39 for options

11:30- 12:45p- Breakout Sessions Round #7

See pgs. 39-41 for options

12:45- 2:00p- Lunch (On Your Own)

2:15- 3:30p- Breakout Sessions Round #8

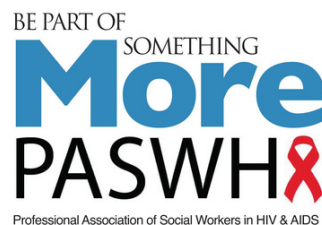
See pgs. 41-43 for options

3:30- 3:45- Snack Break

Regency Foyer

3:45- 5:00p- Breakout Sessions Round #9

See pgs. 44-45 for options



Plenary Session

8:00-9:45 AM

Friday, May 22, 2026

From Insight to Impact: Aligning Care, Community, and Change

Regency Ballroom

1.00 CE Credit

Join us for an engaging fireside chat exploring how leadership, policy, and community insight come together to drive meaningful progress in HIV care. Moderated by Sha'Terra Johnson*, this conversation with Marlene McNeese—Deputy Assistant Director at the Houston Health Department and Co-Chair of the Presidential Advisory Council on HIV/AIDS—will offer a unique perspective at the intersection of local practice and national strategy.

Drawing on her extensive experience, Ms. McNeese will reflect on emerging trends in HIV care, the importance of aligning systems with community needs, and the role of collaboration in advancing more responsive and effective approaches. The discussion will also explore lessons learned from the field, opportunities for innovation, and how practitioners can translate insight into action.

This session offers an opportunity to hear directly from a national leader while grounding the conversation in real-world application—leaving participants with practical takeaways for strengthening care, partnerships, and impact in their own communities.

Moderator: Sha'Terra Johnson, LMSW

Sha'Terra Johnson, MSW, earned her BSW and MSW from Stephen F. Austin State University, focusing on HIV in rural communities. She began her career in direct services with AIDS Foundation Houston and now serves as a Health Planner with the Houston Regional HIV/AIDS Resource Group, leading community engagement and HIV care planning across a 51-county region.

She has advanced rural HIV research, developed a social work internship program, and serves as an adjunct instructor. Her work centers on reducing stigma—especially among Black women—through initiatives like the Be-YOU-tiful Health & Hair Showcase and #SexEdCollegeTours. She is also an active leader across numerous HIV-related boards and coalitions, committed to ending HIV and improving community health.



Speaker: Marlene McNeese, MBA

For the past 33 years, Marlene McNeese has played a leadership role in redefining public health and community-based support systems that address HIV prevention, chemical dependency, mental health, communicable disease, and post-incarceration syndrome. In 2004, Ms. McNeese began her tenure with the Houston Health Department, where she currently serves as the Deputy Assistant Director overseeing the Bureau of HIV/STI and Viral Hepatitis Prevention. Ms. McNeese has earned her master's degree in business administration from Texas Woman's University, and is currently enrolled in the TWU doctoral program for Education, Leadership, and Organization.

Ms. McNeese is a passionate and dedicated advocate and champion of HIV prevention, treatment, and care, and her career trajectory reflects her commitment. She has extensive leadership experience with local and national advisory councils and boards, having served as past chair of the Houston Area Ryan White Planning Council, co-chair for the Houston HIV Prevention Community Planning Group, past board chair for NASTAD, and is the immediate past Co-Chair of the Presidential Advisory Council on HIV/AIDS.



Session Sponsored by:  COLLABORATIVE SOLUTIONS

Special Agenda Items

9:45-12:45 PM

Friday, May 22, 2026

Medical Case Management Block 5

2.5 CE Credits

Room: Frio

Presenters: Melinda Marasch, MSW & Ryan Ayala, LCSW, MSW

This session is designed exclusively for members of the Medical Case Management Cohort. It offers a dedicated space for current participants to engage in peer learning, deepen their skills, and explore best practices together. Please note: This is a closed session for cohort participants only.

Breakout Session Round #6

10:00-11:15 AM

Friday, May 22, 2026

Ethical tensions in HIV/AIDS social work confidentiality, risk, and reporting

1.25 CE Credits

Room: Rio Grande West

Presenter: Johnita A Tucker- AIDS Alabama South

Applying social work ethics can be especially complex in settings shaped by stigma and inequity, particularly in HIV care. Core values—service, social justice, dignity, relationships, integrity, and competence—guide practice, yet people living with HIV still face discrimination and barriers to care.

Social workers play a key role in advocacy, support, and prevention, but ethical tensions arise when laws require disclosure of a client's HIV status. Navigating these challenges requires up-to-date knowledge, careful risk assessment, and an understanding of state-specific laws to balance confidentiality with the duty to protect.

Breakout Session Round #6

10:00-11:15 AM

Friday, May 22, 2026

From Compassion to Compliance: Leveraging Clinical Social Work Leadership to Sustain HIV Services in a Shrinking Funding Landscape **1.25 CE Credits**

Room: Rio Grande Center

Presenters: Bimbla Felix, MSW- Jacobi Medical Center & Patrick Padgen, LMSW- NYC DOHMH

Shrinking HIV funding is creating major challenges for service organizations, requiring social workers to navigate tighter budgets, increased compliance, and more complex client needs.

This session explores how HIV social workers can use clinical expertise, ethical leadership, and collaboration to support grant compliance, maintain quality care, and sustain programs. Participants will learn practical strategies for documentation, audit readiness, and data-informed decision-making.

Focused on action, the session equips social workers to lead change, reduce systemic stigma, and protect client-centered care in a shifting funding landscape.

Housing and HIV from a Social Work Perspective

1.25 CE Credits

Room: Pecan

Presenter: Alton B. Cobb, BSW - PALSS

This presentation will delve into the various aspects of housing as a social determinant of health as it relates to persons living with HIV and the social work perspectives of housing issues. Attendees will be allowed to engage in the discussion as subject area experts. Attendees will also be allowed to relate life experiences with their own housing issues.

SOLHA Certification Session 4

1.25 CE Credits

Room: Medina

Presenter: Kerry Littlewood, Ph.D, MSW - Collaborative Solutions



This session is designed exclusively for members of the SOLHA Certification. It provides a focused environment for those enrolled in the program to connect, reflect, and grow in their leadership with those aging with HIV/AIDS. Please note: This is a closed session for cohort participants only.

Breakout Session Round #6

10:00–11:15 AM

Friday, May 22, 2026

Housing Equals Health Care: A Blueprint for Advancing HIV Outcomes Through Housing First **1.25 CE Credits**

Room: Regency H

Presenters: Kayla Rowans, MSW & Twonnette Pack- ASD A Home for Life

Founded in 1987, ASD provides Housing First, service-enriched housing for people living with, impacted by, or at risk for HIV. The model prioritizes immediate housing access as a foundation for health, treatment adherence, and viral suppression.

In 2024, ASD delivered over 1,300 housing placements, nearly 7,000 case management sessions, and more than 2 million nights of housing, alongside food, transportation, and medical support services.

This session will share practical strategies for addressing housing, food insecurity, transportation, and care navigation as integrated parts of HIV treatment—offering tools to implement Housing First and wraparound services in resource-limited settings.

The Trauma Bond: Implications in HIV Outcomes

1.25 CE Credits

Room: Regency F

Presenter: Gabriel Silva, MSW- Positive Impact Health Centers

This session explores trauma bonding—an emotional attachment that can form with an abusive or controlling partner—and its impact on HIV outcomes.

Using trauma-informed and social ecological frameworks, we examine how trauma bonding intersects with IPV, substance use, mental health, and housing instability, and how it can affect care engagement, medication adherence, and viral suppression.

Social workers will learn to identify trauma bonding, better understand client ambivalence or disengagement, and apply empowerment-based, culturally responsive interventions. Case examples will support practical strategies for improving engagement, retention, and outcomes in HIV care.

Breakout Session Round #6

10:00-11:15 AM

Friday, May 22, 2026

Uncovering the Black Box of Participatory Approaches to Evaluation: A Case Study of Building the Capacity of Southern US Organizations to Create Trauma Informed Spaces

1.25 CE Credits

Room: Rio Grande East

Presenters: Samira Ali, MSW, PhD & Alejandra Avilés, MSW, MPH- University of Houston Graduate College of Social Work

This workshop explores community-engaged participatory evaluation through a case study of ACTION TIS, a grant supporting the creation of trauma-informed spaces.

Set in the context of increasing trauma in the US South, the session highlights how participatory methods can help organizations build healing-centered environments despite limited resources.

Using storytelling, Photovoice, and virtual collaboration tools, participants engaged in meaning-making about their spaces and processes. Key outcomes included strengthened storytelling skills, increased empowerment and ownership, new cultural perspectives, and deeper reflection on trauma-informed design.

The workshop shares lessons learned to strengthen participatory evaluation with marginalized communities.

Breakout Session Round #7

11:30- 12:45 PM

Friday, May 22, 2026

A Trauma Informed Approach to Grief in the Workplace

1.25 CE Credits

Room: Rio Grande West

Presenter: Emily Burchell, Multnomah County Health Department

Over the past five years, healthcare settings and other Ryan White providers have experienced significant challenges related to staff burnout and retention. For healthcare workers, experiencing the loss of a patient can generate trauma in the form of grief and exacerbate feelings of burnout. This workshop will provide a brief overview of trauma informed care as well as how to identify factors contributing to increases in patient mortality such as the fentanyl crisis, the COVID-19 pandemic, lack of affordable housing, and insufficient mental health and substance dependence treatment resources. Presenter will describe and discuss the concept of unacknowledged grief and how it relates to staff burnout and provide several examples on how organizations can honor the loss of patients and support staff who are grieving that loss with the goal of improving trauma informed practices and decreasing staff burnout.

Breakout Session Round #7

11:30– 12:45 PM

Friday, May 22, 2026

HIV Case Management 101

1.25 CE Credits

Room: Regency H

Presenters: Jessica M. Winkler, DHA, LMSW, ACM-SW - Roper St. Francis Hospital & Chrislyn Williams-Roper St. Francis Healthcare

HIV/AIDS and prevention case managers are professional who serve as advocates, supporting, guiding, and coordination care for patients as they navigate their health and wellness journey. Case managers have multiple roles. They complete assessments, develop personalized care plans, and care coordination. Advocacy, empowerment, education are essential components to case management. The role of a case manager is to empower patients to advocate for themselves and assist with developing health literacy. With this presentation, we will reflect on successful practices and techniques that our program uses to enrich and empower our patients. This presentation will included HIV/AIDS and prevention case management.

Housing, Healthcare and Aging in Place for Older PLWHA

1.25 CE Credits

Room: Rio Grande Center

Presenter: Beverly Raudales, MS, MD - Comunilife, Inc

This presentation highlights three Comunilife NYC permanent supportive housing programs for older people living with HIV/AIDS (El Borinquen, Prospect Residence, and Scatter Site Housing), focusing on tailored services and resident stories.

It examines key challenges of aging with HIV, including accelerated aging and comorbidities, housing stability, aging in place, multiple stigmas, and the need for more integrated, specialized care.

The session will also share system-level recommendations and invite discussion on innovative, culturally responsive approaches in supportive housing for older PLWHA

A Determinants-Based Approach to Addressing the Mental Health of 2SGBTQ+ Guys in Social Work Practice

1.25 CE Credits

Room: Rio Grande East

Presenter: Rahim Thawer, MSW, RSW, CCS

This interactive session explores a determinants-based framework for understanding the mental health of 2SGBTQ+ men in HIV care, emphasizing how systemic factors—such as stigma, racism, body image, and substance use—shape well-being and access to services.

Through brief case discussions and applied reflection using CBT, psychodynamic, and Gestalt approaches, participants will build culturally competent, trauma-informed, and affirming responses. Attendees will leave with practical tools to address intersectionality, reduce stigma, and strengthen mental health support.

Breakout Session Round #7

11:30- 12:45 PM

Friday, May 22, 2026

The Kiki Coalition: A Collaborative Model for Centering Youth Voice and Community-Led Holistic Care in the House and Ballroom Scene 1.25 CE Credits

Room: Regency F

Presenters: Aruna Krishnakumar, LCSW - Hetrick-Martin Institute, Jermaine Ellis - Hetrick- Martin Institute, Cameron L Gowdicott, MPH - NYC Health Department, & Patrick Padgen, LMSW - NYC DOHMH

The Kiki Coalition is a NYC collaboration of community organizations supporting LGBTQ+ youth, especially those in the Kiki/Ballroom scene, through culturally grounded HIV prevention, care, and youth development.

The Coalition hosts events like Kiki balls, workshops, and Youth Pride Fest that combine cultural celebration with access to HIV testing, behavioral health, and social services.

Aligned with “Compassion to Action,” this session highlights how the Coalition turns compassion into action through youth leadership, cross-agency collaboration, and community mobilization while addressing systemic barriers such as racism, homophobia, transphobia, housing instability, and poverty.

Participants will gain strategies for building coordinated, youth-centered networks that strengthen HIV outcomes and support LGBTQ+ youth well-being.

Breakout Session Round #8

2:15- 3:30 PM

Friday, May 22, 2026

Being Over Doing: Reclaiming Wellbeing in a Demanding World 1.25 CE Credits

Room: Regency F

Presenter: Brandi Ray - Ray Way Legacies, LLC

In a culture that rewards constant output, many organizations are seeing the hidden cost: burnout, disengagement, and declining performance. Being Over Doing challenges leaders to rethink productivity by helping individuals anchor their work in identity, purpose, and wellbeing. This session equips attendees with practical strategies to create healthier, more sustainable work environments where people...and results can thrive.

Breakout Session Round #8

2:15- 3:30 PM

Friday, May 22, 2026

Building the Future HIV MSWs: One Clinic's Structured Program

1.25 CE Credits

Room: Rio Grande East

Presenter: Jaime Lee Morris, MSW - Roper St. Francis

How do you address the HIV MSW shortage? Why you grown your own! At the Roper St. Francis Health Services Center, we have constructed a very structured MSW intern program. The program has been very successful in shaping and forming our future MSW students as well as onboarding case managers post graduation, cutting orientation time and saving money. Students love it, patients love it, and our case management team is always thankful for the helping hand.

Not Without Us: Strengthening Community Voice, Service, and Shared Decision-Making through Proyecto VIDA/ Project LEAP

1.25 CE Credits

Room: Rio Grande Center

Presenters: Rodriga S. Avila, LMSW & Amber Z. Barrow, MPH, MCHES, CHW - Houston Area Ryan White Planning Council

This workshop reflects the values of HIV social work, which include showing up with care, education, and a commitment to community. It will share the evolution and implementation of Project LEAP/Proyecto VIDA, a community education and leadership training developed to address the specific needs of Spanish-speaking communities. Delivered entirely in Spanish, the session will highlight how the training strengthens meaningful participation in Ryan White planning processes, include a retrospective look at 15+ years of program data, and offer an approach that can be adapted in other jurisdictions. The session can be presented and delivered entirely in Spanish.

Breakout Session Round #8

2:15- 3:30 PM

Friday, May 22, 2026

Principled Leadership in Times of Crisis: Putting People First

1.25 CE Credits

Room: Regency H

Presenter: Ebony Barney, MSW, MPH - The Health Foundation of Greater Indianapolis, Inc.

This session, Principled Leadership in Times of Crisis: Putting People First, explores how social work ethics guide decision-making during crises in HIV service programs, especially amid sudden funding changes that threaten continuity of care.

Grounded in the NASW Code of Ethics, it highlights how values like dignity, social justice, and human relationships can shape leadership that prioritizes people over systems.

Participants will learn from real examples, including extending benefits, honoring commitments, and supporting workforce transitions, while maintaining care continuity and trust.

The session also examines challenges facing a post-COVID Gen Z workforce and offers practical strategies for ethical, transparent leadership that supports both staff and communities in times of uncertainty.

Revving Up Your Transportation Program

1.25 CE Credits

Room: Rio Grande West

Presenters: Ryan Nix & Belle Fierro - Alianza of New Mexico

Transportation is consistently identified in needs assessments as a key barrier to care, yet remains difficult to implement across both urban and rural settings. Research also shows transportation directly impacts treatment adherence and retention in HIV care.

This session highlights two innovative models addressing this gap. Almost4Minds in Indianapolis began providing rides in 2016 and has grown into a fleet-based program delivering over 60,000 rides to support access to Ryan White services. Alianza of New Mexico serves a vast rural region by using individualized fuel cards to help clients access medical care and essential needs.

Together, these programs demonstrate practical, scalable approaches to improving access, engagement in care, and health outcomes through transportation support.

Breakout Session Round #9

3:45- 5:00 PM

Friday, May 22, 2026

Bridging Gaps: Addressing HIV and Black Mental Health Disparities 1.25 CE Credits

Room: Pecan

Presenter: Corey Ingram, MSW

Bridging Gaps: Addressing HIV and Black Mental Health Disparities explores the intersection of HIV, mental health, and racial inequities affecting the Black community.

The workshop provides an overview of current disparities, highlighting how mental health impacts HIV treatment adherence and overall care, supported by research and real-world examples.

It also examines structural barriers such as systemic racism and oppressive systems, and discusses strategies to improve equitable, culturally responsive care.

From Survival to Stability: Integrating Housing First and Social Supports in HIV Care 1.25 CE Credits

Room: Rio Grande Center

Presenters: Michele M. Durham, Jose Contreras, & JaDa Fontenot - BEAT AIDS Coalition Trust

From Survival to Stability explores BEAT AIDS' housing-first model for people living with HIV, combining housing with wraparound supports like case management, behavioral health, transportation, and food access.

The session highlights how stable housing improves HIV outcomes and reviews funding strategies to sustain programs.

Through case exercises and group discussion, participants will gain practical tools to integrate housing and services that move clients from survival to stability.

Breakout Session Round #9

3:45– 5:00 PM

Friday, May 22, 2026

Preparing for Implementation of a Red-Carpet Entry Clinic in an Ending the HIV Epidemic (EHE) Priority Jurisdiction

1.25 CE Credits

Room: Regency F

Presenters: Karah Y. Greene, MSW, Jerome T. Galea, PhD, MSW, LCSW, Bernice T. McCoy-Lopez, PhD, MPH, & Charurut Somboonwit, MD - University of South Florida

The Red Carpet Entry (RCE) model is an evidence-informed approach to rapidly link individuals newly diagnosed with HIV or at risk into prevention and treatment services.

This project describes how the OPEN Arms Initiative in Tampa will adapt RCE into a “concierge navigator” model, where MSW students contact clients within 24 hours, secure appointments within 72 hours, and support rapid access to ART or PrEP along with psychosocial and benefits navigation.

Navigators provide short-term intensive support, then transition clients to ongoing care once stable. The model uses real-time data tracking and aims to improve rapid linkage, retention, and status-neutral HIV care.

The Ecosystem of Care: How Immigration Narratives Shape Trust and HIV Prevention

1.25 CE Credits

Room: Regency G

Presenter: Will Ramirez- Southern AIDS Coalition

Immigration enforcement climates and shifting public narratives shape how immigrant and mixed-status communities engage with HIV prevention and care, often influencing decisions before clinic contact. These factors affect testing, PrEP uptake, linkage to care, adherence, and long-term engagement through fear and mistrust.

Drawing on examples from several U.S. regions, the session highlights patterns such as reduced testing, reluctance to share information, and avoidance of services during periods of heightened fear—reflecting systemic pressures rather than individual behavior.

Through discussion and polling, participants will examine how narratives shape the “ecosystem of care” and impact trust and continuity.

The session concludes with strategies to integrate narrative awareness into trauma-informed practice to strengthen engagement and equity in HIV services.



Advance Your Expertise with SOLHA Certification!

Earn your Social Work with Older Persons Living with HIV/AIDS (SOLHA) Certification with a **one-time registration fee of \$350**. Gain specialized skills, earn 6.25 CE credits, and enhance your leadership in this critical field.

Certification Includes:

- Mandatory Pre-Conference Session
- 4 required sessions during the conference
- Online component with reflective practice & assessments
- Recertification every 24 months
- Must attend the conference to earn certification.

Scan the QR code to join the waitlist for SOLHA Certification at the 2027 National Conference.



DAY 4 AGENDA
SATURDAY, MAY 23, 2026

8:00-9:00a- Coffee Service Only

Regency Foyer

**8:00- 9:00a- Roundtable Discussions:
Regional Groups**

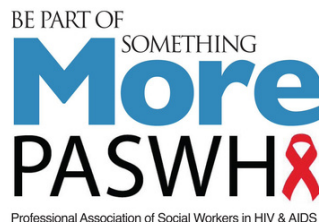
Various

10:00- 12:00p- Closing Plenary Brunch

Regency Ballroom

**Interested in joining a PASWHA
Networking Group?**

After the conference, log in to your Member Portal and join the networking group that fits your interests—it's the best way to stay connected and keep the conversation going.



Roundtable Discussions: Regional Groups

8:00- 9:00 AM

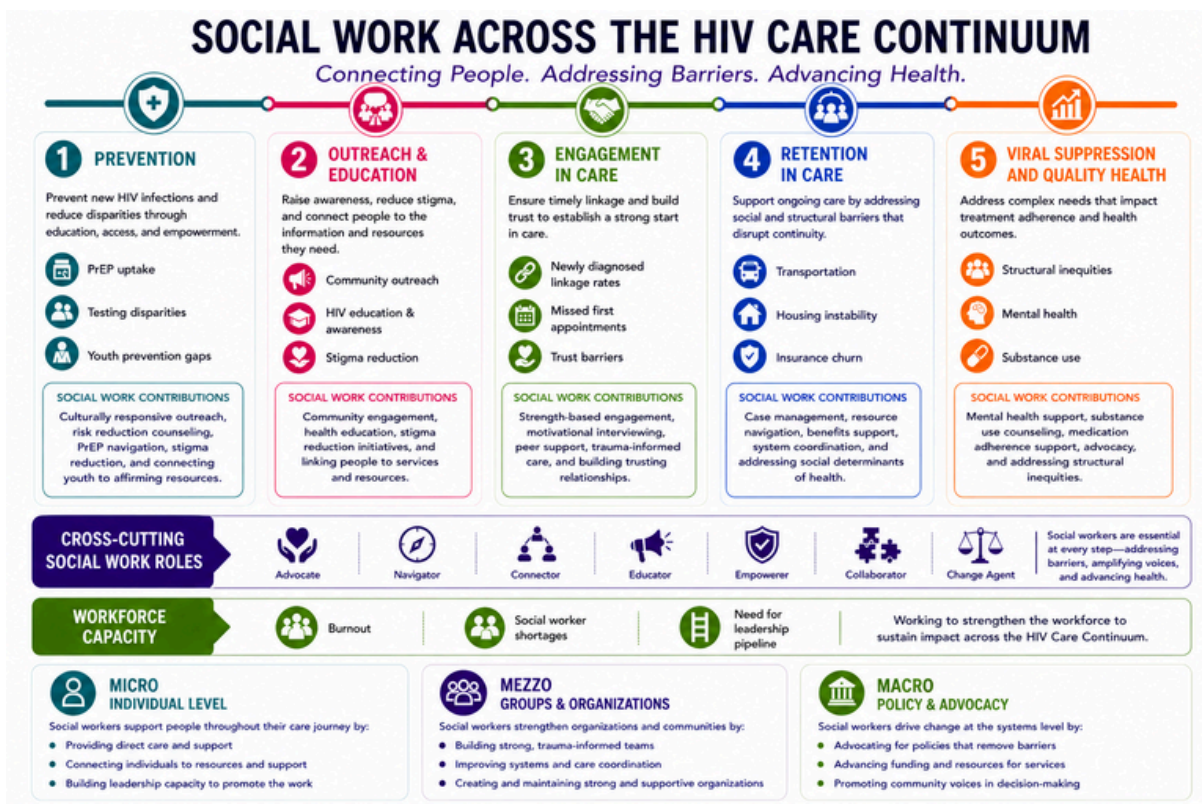
Saturday, May 23, 2026

Assessing the HIV Care Continuum in Our Own Backyards — A Social Work Systems Response 1.00 CE Credit

Room: Rio Grande Center

This highly interactive regional roundtable will engage participants in a collaborative review of the Social Work Across the HIV Care Continuum framework to identify strengths, gaps, emerging challenges, and opportunities within their local and regional communities. Using the five domains of the HIV Care Continuum—Prevention, Outreach & Education, Engagement in Care, Retention in Care, and Viral Suppression & Quality Health—participants will examine how systems, policies, workforce capacity, and social determinants of health impact people living with HIV, while exploring the critical cross-cutting roles social workers play as advocates, educators, navigators, collaborators, and change agents across the continuum.

Through facilitated regional discussions, attendees will identify local barriers, emerging trends, policy and funding changes, workforce challenges, and innovative community responses occurring within their own “backyards.” Guided by a systems and social work lens, participants will explore where progress is occurring, where gaps remain, and what opportunities exist to strengthen local and regional HIV responses. The session is designed to foster collaboration, increase situational awareness, strengthen advocacy efforts, and support coordinated action to improve outcomes for people living with HIV.



Closing Plenary Brunch

10:00- 12:00 PM

Saturday, May 23, 2026

Undetectable Is Not the End: Reclaiming the Human Experience of HIV

Regency Ballroom

1.00 CE Credit

As HIV care continues to advance, this closing plenary challenges the field to look beyond biomedical success and re-center the full human experience of living with HIV. While treatment has transformed HIV into a manageable condition, many individuals still face stigma, trauma, isolation, and complex mental health challenges—particularly in the first year following diagnosis.

This dynamic session brings together diverse voices—including people living with HIV, emerging social workers, clinicians, and community leaders—to explore the intersection of mental health, identity, and lived experience in HIV care. With a focus on communities most impacted, the discussion will highlight culturally responsive approaches and the importance of centering real-world experiences in care and service delivery.

Participants will leave with a renewed call to action: to integrate mental health as a core component of care, elevate the voices of those most affected, and continue advancing dignity, belonging, and meaningful support for people living with HIV.

Moderator: Javier Segovia, Ph.D. – Co-Founder and Psychotherapist at Maravilla Therapy Services



Javier Segovia, PhD, LCSW-S, BCD, is a leader in social work education and practice. A recent PhD graduate of Our Lady of the Lake University, he serves as Co-President of the GADE Student Advisory Committee, fostering collaboration and advocacy. As a Graduate Research Assistant with the H.E.R.O. Lab, he advanced healthcare equity. With extensive experience as a psychotherapist, clinical supervisor, and educator, Javier has taught undergraduate and graduate courses. Currently employed with the U.S. Department of Veterans Affairs and Grounded Space, LLC, he integrates research, practice, and policy. Dr. Segovia's work exemplifies his commitment to social justice and ethical practice.

Panelist: Elias Diaz - SAFE

Elias Diaz is a mental health clinician from Eagle Pass, TX, with 10 years of experience and a Master's in Clinical Psychology from Antioch University. He co-founded EP SAFE, a nonprofit serving LGBTQIA communities in rural Southwest Texas, and works as a Compliance Officer for Maverick County Hospital District.

He focuses on HIV/STI prevention, reducing barriers to care, and addressing stigma in LGBTQIA and Latinx communities. Diaz has contributed to national HIV prevention campaigns and created PreParadas!, an anti-stigma initiative for Latinx families.

He is also the first openly LGBTQ elected official in Eagle Pass.



Panelist: Deondre Moore - The Freelux Project

Deondre B. Moore is a GLAAD Award-winning HIV and civil rights activist who began his advocacy after being diagnosed with HIV in 2014 while attending Sam Houston State University.

He has over a decade of experience in public health, community engagement, and national advisory work, and currently serves as Deputy Director of Community Impact for The Freelux Project and Texas Community Empowerment Manager for Vivent Health.

Appointed to the Presidential Advisory Council on HIV/AIDS (PACHA) in 2023, he focuses on HIV prevention, resource access, and strengthening support for Black and other communities of color.





As a registered participant of the National Conference on Social Work and HIV/AIDS, ***your annual PASWHA membership is included.***

Being a member means you're part of a national network of professionals committed to advancing the field of social work in the context of HIV/AIDS.

Your Member Benefits

- Discounted Registration for the National Conference on Social Work and HIV/AIDS
- Free Webinars & Discounts on specialized training throughout the year
- CE Opportunities to support your professional development
- Free Job Postings in the Member Portal
- Quarterly Newsletter with updates, news, and resources tailored to the field
- Voting Rights to elect PASWHA's National Board of Directors
- Leadership Opportunities – Run for the Board or serve on committees
- Participate in Research and contribute to field advancement
- Access the PASWHA Member Portal to connect, collaborate, and grow with fellow members

Thank you for being part of this vital movement. Together, we are building a stronger, more informed, and more compassionate network of social workers committed to ending the HIV epidemic.

Questions about your membership? Visit the PASWHA table or email Mary Lolling at mary@paswha.org.

RISK TO REASONS TO RESILIENCE

Reframing HIV Care Through Strength, Agency, and Lived Experience



A Training for Social Workers & Allied Health Professionals

The Risk to Reasons to Resilience training is a practitioner-focused curriculum designed to strengthen culturally responsive, trauma-informed care for Black women living with HIV/AIDS.

Developed through the ViiV Healthcare Risk to Reasons initiative, the curriculum was co-created alongside the Black Women's Social Work Task Force, an advisory group of Black women whose professional expertise and lived experience shaped the vision, language, and direction of the training.

FROM RISK → TO REASONS → TO RESILIENCE

Traditional HIV messaging centered on “risk” can unintentionally reinforce stigma, shame, and disengagement. This training introduces a strengths-based framework that shifts the focus toward:



TRAINING FOCUS AREAS

Participants explore:

- Trauma-informed and culturally responsive practice
- Strengths-based and person-centered approaches
- Language, stigma, and implicit bias in service delivery
- Structural and social factors impacting Black women living with HIV
- Advocacy, leadership, and systems change

WHAT PARTICIPANTS ARE SAYING:

“Transformational in how we humanize social work and health service delivery.”

“A roadmap for addressing the needs of Black women living with HIV/AIDS.”



Learn More: Scan the QR code or email: nfo@paswha.org

LEARN MORE:

Scan the QR code to learn more or email: info@paswha.org



Advancing Social Work Leadership to Transform Systems and Improve the Lives of Older People Living with HIV/AIDS (OPLWH)



THE SOCIAL INITIATIVE

Creating Social Change Leaders

An Initiative of PASWHA's HIV & Aging: A Social Work Response

The SOCIAL Initiative is an implementation-science leadership initiative developed by the Professional Association of Social Workers in HIV & AIDS (PASWHA) to strengthen cross-sector collaboration and improve health outcomes for older people living with HIV/AIDS (OPLWH).

FOCUS AREAS

Participants work to strengthen collaboration between HIV services and one of four critical systems:



WHAT IS THE SOCIAL INITIATIVE?

The SOCIAL Initiative equips emerging community leaders and organizations with practical tools to:



Build stronger cross-system partnerships



Advance equitable health outcomes



Implement community-driven innovation strategies



Strengthen leadership and collaboration skills



Develop sustainable systems change approaches

Organizations participate as part of a learning cohort focused on transforming how HIV systems collaborate with key community sectors.

THE SOCIAL MODEL: LEARN - APPLY - SHARE

LEARN

Participants engage in a virtual Intensive Practice Lab (IPL) focused on:

- Implementation science
- Systems change strategies
- Community collaboration
- Leadership development

APPLY

Organizations implement a SOCIAL Innovation Project in their own community while receiving:

- Coaching and consultation
- Peer learning opportunities
- Tools and implementation support

SHARE

Participants present project outcomes, lessons learned, and next steps for sustaining community impact.

WHAT PARTICIPANTS GAIN:

- ✓ Build cross-sector partnerships
- ✓ Explore root causes impacting older adults living with HIV
- ✓ Develop a theory of change
- ✓ Create actionable community strategies
- ✓ Strengthen innovation and leadership skills

POTENTIAL COMMUNITY IMPACT:

SOCIAL Innovation Projects may result in:

- New policies and collaborative practices
- Cross-sector workgroups and task forces
- Joint funding opportunities
- New training initiatives
- Long-term systems collaboration models



EXPLORE

SAN ANTONIO



SCAN FOR CITY MAP

SHOW US YOUR BADGE

For a list of the current offers:
Scan the QR Code or Go To:

VisitSanAntonio.com/SUYB



Explore San Antonio's rich
culinary and nightlife scene
Scan below to access:



**DOWNTOWN
DINING GUIDE**



**DOWNTOWN
NIGHTLIFE GUIDE**



**PEARL
DINING GUIDE**



**SOUTHTOWN
DINING GUIDE**

Thank you to our Partners!

Presenting Sponsors



Silver Sponsors



Conference Partners

