



# Catalogue 2025



# About Phoenix

## Uniquely Australian design

Bathroom and kitchen fittings by Phoenix are unlike any other. We design, prototype and refine every product in-house in Australia, combining world-class technology with a 35-plus year history of innovation. Working locally means being able to respond quickly to market demands, consumer trends and customer needs with original products.

## Award-winning reputation

With our extensive collection, superior finishes and innovative design, Phoenix products are consistently recognised by industry design awards in Australia and overseas, including iF® Design Awards, Good Design® Awards and Red Dot Design Awards including the 'Best of the Best' for the Axia collection.

## Driven by innovation

A focus on innovation ensures Phoenix continues to deliver at the highest level, defining trends and leading the industry. Our in-house R&D department combines years of collective experience with a passion for design, both aesthetic and technical. We constantly think ahead – it's how we define new trends and create timeless products.

## Trusted legacy

Phoenix was founded in 1989, and since that time it has grown to become one of Australia's best known and most trusted brands in bathroom and kitchen fittings. Today our people build upon this heritage with innovative design, trusted quality and reliable service. The Phoenix story is one we are proud to continue.

## People who care

Behind the beautiful innovation and detailed design of every product is a team of dedicated people. From our generous warranties to our customer service, the way we work reflects the essence of our tapware – integrity. We always go the extra mile to make a difference.

## Investing in your future

We believe innovation and sustainability go hand in hand. That's why we've developed a production process that minimises waste and environmental impact. At Phoenix, our people create, design and manufacture with the future of our planet top of mind. Our work is always informed by sustainability principles and the impact our products make on our environment.





# Contents

01	About Us
02	Extensive Warranty
03	Our Designers
04	Award-Winning Collections
06	Contemporary Finishes
08	Brushed Nickel
09	Brushed Gold
10	Brushed Carbon
11	Matte Black
12	Matte White
13	Stainless Steel 316
14	Collections
16	Designer Sink Mixers
18	Vask
20	Cromford
22	Nuage
24	Axia
26	Teel
28	Mekko
30	Gloss MKII
32	Lexi MKII
34	Nostalgia
36	Vivid Slimline SS
38	Vivid Slimline
40	Vivid Slimline Plus
42	Vivid Slimline Oval
44	Vivid Slimline Up
48	Showers
50	The Shower for You
52	LuxeXP™ Showers
56	Twin, Rail & Hand Showers
60	Shower Arms & Roses
64	Outlets
65	Accessories
72	Sinks, Drains, Wastes & Traps
76	Line Drawings
88	About SwitchMix®

# Extensive Warranty

At Phoenix, we believe our warranty is a testament to our ongoing commitment to producing quality products. We have a highly trained, full-time team, who are dedicated to providing quality after sales care and service. This service allows our customers to purchase with confidence and peace of

mind. Each Phoenix product is tested to ensure we exceed all Australian standards, including the standards of our customers. We only ever send products to market when we are confident they will provide valuable and long-term solutions, allowing us to offer such an extensive warranty.

## Mixers

<b>Lifetime</b> Warranty European Cartridge	<b>15</b> Year Warranty Standard Cartridge	<b>7</b> Year Warranty Product & Parts	<b>7</b> Year Warranty Non-Chrome Finish	<b>1</b> Year Warranty Labour
--	--	--	--	-------------------------------------

## Tapware

<b>7</b> Year Warranty Product & Parts	<b>7</b> Year Warranty Non-Chrome Finish	<b>1</b> Year Warranty Labour
--	--	-------------------------------------

## LuxeXP™ Showers

**Lifetime**  
Warranty Product & Parts

**Lifetime**  
Warranty Finish

## Standard Showers

**15** Year  
Warranty  
Product & Parts

**3** Year  
Warranty  
Non-Chrome Finish

**1** Year  
Warranty  
Labour

## Sinks

**Lifetime**  
Warranty Sink Structure

**Lifetime**  
Finish Warranty Quartz Sinks

**7** Year Finish  
Warranty  
Coloured SS Sinks

**1** Year  
Warranty  
Parts & Labour

**1** Year Finish  
Warranty  
Sink Accessories

## Accessories

**7** Year  
Warranty  
Product & Parts

**7** Year  
Warranty  
Non-Chrome Finish

## Drains

**10** Year  
Warranty  
Product & Parts

**2** Year  
Warranty  
Non-Chrome Finish

## Wastes & Traps

**1** Year  
Warranty  
Product & Parts

Conditions apply. For our full warranty, terms and conditions, visit our website [phoenixtapware.com.au](http://phoenixtapware.com.au)

# Our Designers



Our relentless focus on design and innovation ensures customers will always enjoy the best bathroom experience.

An in-house design team gives us the ability to manage and control the design, quality and performance of our products and respond quickly to market trends.

Our team has extensive experience in the industry and have been recognised internationally for their outstanding achievements throughout their time at Phoenix, most notably with multiple iF Design Awards, Good Design Awards and Red Dot Design Awards. In 2023, two collections also won an Australian Good Design award.



# About Us Award-Winning Collections



Vask  
2025



Tradelink  
Exclusive

Kusabi  
2025



SwitchMix®  
2024



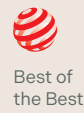
LuxeXP™  
2023



Cromford  
2023



Gloss MKII  
2023



Teel  
2022 | 2023



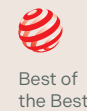
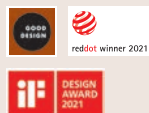
Nuage  
2021 - 2023



Nuage  
Accessories  
2022 - 2023



Lexi MKII  
2021



Axia  
2020 | 2023



Other collection wins also include; Enviro316, NX Iko & Orli, Zimi, Nara, Alia, Ortho and Toi



# Award-Winning Collections

Our Australian design team is proud to be represented regularly in many of the world's leading awards and competitions, receiving recognition for our design driven products. It's a testament to the collective talent and skill amongst those in our company, whose hard work has been deservedly rewarded in such esteemed design forums.

Recently, we have had international design awards bestowed on our Vask, Kusabi, SwitchMix®, LuxeXP™, Cromford and Nuage collections. A highlight of our award wins have been two Best of the Best prizes at the Red Dot Design Awards for Axia (2020) and Teel (2022). The Best of the Best accolade is for ground-breaking design and is the highest award in the competition, being voted for by a panel of top international designers.

# Contemporary Finishes

Phoenix is proud to offer a wide range of stunning tapware finishes to complement any interior design. Each finish is developed to the highest quality and durability standards using the latest technology and production processes.





## Contemporary Finishes Collection



## Brushed Nickel

This finish is characterised by its gentle, soft metallic appearance and brushed lines on its surface. Brushed Nickel can be your go-to finish when looking to reference a refined colour palette, teaming graciously with sophisticated tile choices. It is one of our most versatile finishes.



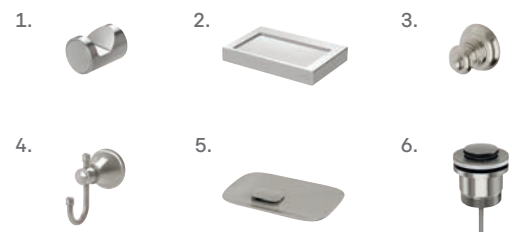
Brushed Nickel Mixer & Tapware Collections:

1. Vivid Slimline 2. Axia 3. Cromford 4. Vask 5. Lexi MKII 6. Gloss MKII 7. Nuage 8. Vivid Slimline Plus 9. Teel. Designer Sink Mixers, Designer Swivel and Vivid Outlets, Mekko, Nostalgia, Vivid Slimline Oval, Vivid Slimline Up (not shown)



Brushed Nickel Shower Collections:

1. Lexi 2. Cromford 3. Nuage 4. Oxley 5. Ormond. Nostalgia, Vivid, Vivid Slimline (not shown)



Brushed Nickel Accessory Collections:

1. Vivid Slimline 2. Lexi MKII 3. Cromford 4. Nostalgia 5. Nuage 6. Wastes & Traps. Gloss, Heated Towel Rails, Radii Round & Square (not shown)



## Brushed Gold

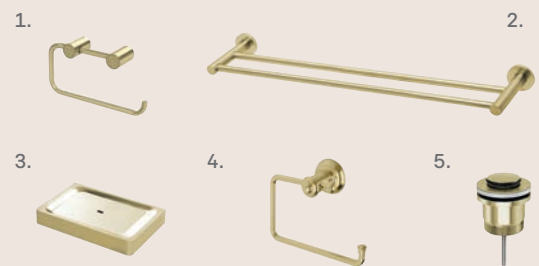
The warm tone of our Brushed Gold finish is characterised by the muted lines across its surface and its soft metallic hue. It is a modern spin on a traditional gold tapware finish and can be paired with earthen, natural tones found in terracotta and stone.



Brushed Gold Mixer & Tapware Collections:  
**1.** Designer Sink Mixers **2.** Vivid Slimline **3.** Vivid Slimline Oval **4.** Vivid Slimline Plus **5.** Vask **6.** Cromford **7.** Gloss MKII. Designer Swivel Outlets, Vivid Outlets and Vivid Slimline Up (not shown)



Brushed Gold Shower Collections:  
**1.** Vivid **2.** Cromford **3.** Oxley **4.** Vivid Slimline. Ormond (not shown)



Brushed Gold Accessory Collections:  
**1.** Vivid Slimline **2.** Radii Round **3.** Gloss **4.** Cromford. **5.** Wastes & Traps. Heated Towel Rails (not shown)

## Contemporary Finishes Collection



## Brushed Carbon

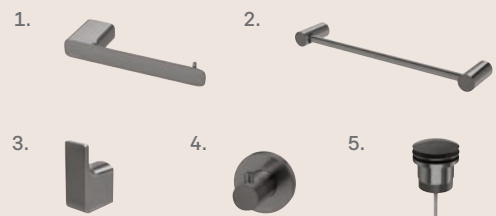
The textural, earthen feel of Brushed Carbon creates mood and drama. Working beautifully with sophisticated tones, it brings visual excitement in both classic and modern settings. Although the brushed surface is refined, the statement this finish will bring to a home is strong.



Brushed Carbon Mixer & Tapware Collections:  
**1.** Designer Sink Mixers **2.** Gloss MKII **3.** Nuage **4.** Designer Outlets  
**5.** Vask **6.** Vivid Slimline **7.** Teel **8.** Vivid Slimline Plus **9.** Mekko.  
 Vivid Slimline Up and Vivid Outlets (not shown)



Brushed Carbon Shower Collections:  
**1.** Vivid Slimline **2.** Nuage **3.** Vivid **4.** Oxley.  
 Ormond and Lexi (not shown)



Brushed Carbon Accessory Collections:  
**1.** Nuage **2.** Vivid Slimline **3.** Gloss **4.** Rarii Round  
**5.** Wastes & Traps. Sinks, Heated Towel Rails, Rarii Square (not shown)

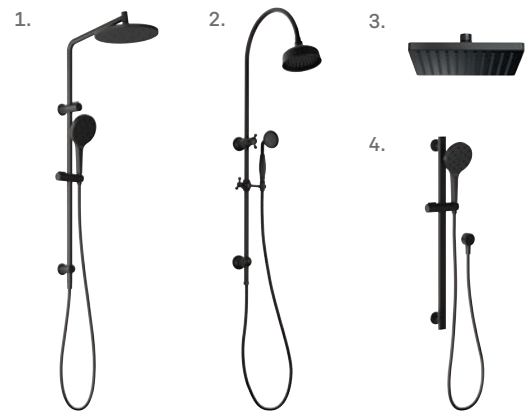


# Matte Black

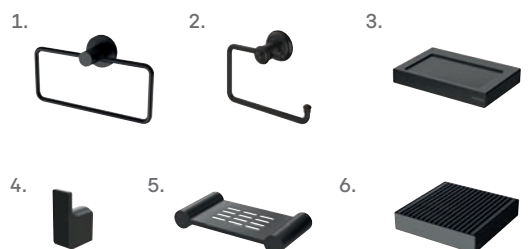
Matte Black makes a confident statement that will complement a simple, monochromatic environment while also flourishing in bold surroundings featuring terrazzo or pastel hues. When refining the strength of Matte Black, the tone of timbers such as messmate and oak varieties work beautifully.



Matte Black Mixer & Tapware Collections:  
 1. Vivid Slimline 2. Axia 3. Mekko 4. Cromford 5. Vivid Slimline Oval  
 6. Teel 7. Lexi MKII 8. Gloss MKII 9. Vivid Slimline Plus.  
 Designer Sink Mixers, Designer Swivel Outlets, Vivid Outlets and Vivid Slimline Up (not shown)



Matte Black Shower Collections:  
 1. Ormond 2. Cromford 3. Lexi 4. Oxley.  
 Vivid and Vivid Slimline (not shown)



Matte Black Accessory Collections:  
 1. Radii Round 2. Cromford 3. Lexi MKII 4. Gloss  
 5. Vivid Slimline 6. Drains. Sinks, Radii Square, Heated  
 Towel Rails and Wastes & Traps (not shown)



# Matte White

Matte White is a subtle, natural finish. This organic tone blends beautifully with rich timber and stones such as marble and terrazzo. Equally, Matte White provides the blank canvas upon which to add stunning pops of colour to bring your space to life.



Matte White Mixer Collections:

1. Nuage



Matte White Sinks Collections:

1. 5000 Series Sinks



Matte White Shower Collections:

1. Nuage 2. Vivid 3. Nuage 4. Nuage



Matte White Accessory Collection:

1. Nuage

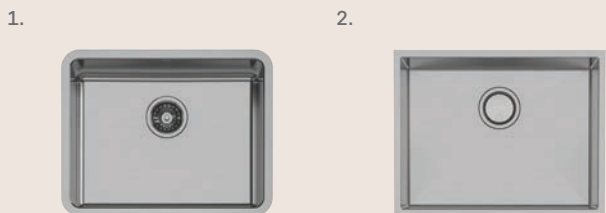


# Stainless Steel

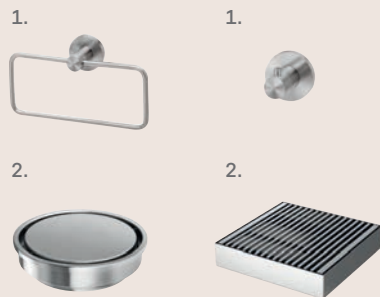
Our durable Stainless Steel finish provides a crisp, clean look. This durable finish provides flexible application for indoor and outdoor use and is the most environmentally sustainable of all our finishes. It pairs well with natural elements such as slate, timber and honed tiles.



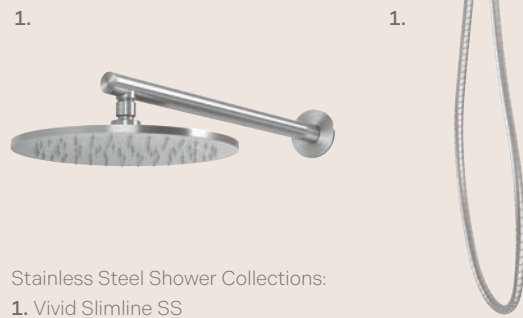
Stainless Steel Mixer & Tapware Collections:  
**1.** Designer Sink Mixers **2.** Vivid Slimline SS



Stainless Steel Sinks Collections:  
**1.** 2000 Series Sinks **2.** 4000 Series Sinks. 1000 Series Sinks (not shown)



Stainless Steel Accessory Collections:  
**1.** Ralii SS **2.** Drains



Stainless Steel Shower Collections:  
**1.** Vivid Slimline SS

# Collections

At Phoenix we are proud of our dynamic mixer and tapware collections. The solutions we provide are created for considered design adding style and versatility to any bathroom, laundry or kitchen design.

## Our Transition to Lead Free

New Australian regulations require all drinking water outlets to use lead free brass by May 2026. We are currently transitioning our affected products to meet this standard. For more details and to view our available Lead Free products, scan the QR code or visit: [phoenixtapware.com.au/lead-free/](https://phoenixtapware.com.au/lead-free/)



Featured products (from left) in Brushed Carbon:

- VS7451** Vivid Slimline Floor Mounted Bath Mixer with Hand Shower
- 650-8763** Phoenix Heated Triple Towel Rail Round 800mm
- 119-0600** Vivid Slimline Plus Wall Top Assemblies
- 609-5300** Ormond Shower Arm & Rose
- 609-6630** Ormond Hand Shower
- 111-8500** Vivid Slimline Hand Towel Rail
- 119-1125** Vivid Slimline Plus Wall Basin / Bath Hostess Set







## Designer Sink Mixers

Functionality and style have been combined to create the ultimate kitchen mixer collection. Each piece has been designed to meet the needs of any household. With extended spout reach and 360° swivel capabilities, enhanced functionality is just one of the benefits this stylish collection has to offer.

Refer to pages 74-75 for sinks and sink accessories

**Featured product:**  
Prize Flexible Coil Sink Mixer  
in Brushed Nickel



Chrome



Stainless Steel 316



Brushed Nickel



Brushed Carbon



Matte Black



Brushed Gold



## Designer Sink Mixers Collection



**Blix Flexible Hose Sink Mixer 220mm Round**  
 Brushed Carbon  
 10473100 \*  
 5 Star - 6lt/min  
 WELS REG No. T25891  
 Available in all finishes



**Deja Pull Out Sink Mixer 220mm**  
 Chrome  
 126-7330 \*  
 5 Star - 5lt/min  
 WELS REG No. T37836  
 Available in Chrome, Brushed Nickel and Matte Black



**Linq 316 Pull Out Sink Mixer SS 220mm**  
 Stainless Steel 316  
 133-7120 \*  
 6 Star - 4.5lt/min  
 WELS REG No. T38444  
 Premium marine grade 316 stainless steel



**Prize Flexible Coil Sink Mixer 220mm**  
 Brushed Nickel  
 10273100 \*  
 5 Star - 6lt/min  
 WELS REG No. T25893  
 Available in Chrome, Brushed Nickel and Matte Black



**Vezz Flexible Hose Sink Mixer 220mm Squareline**  
 Brushed Nickel  
 10373100 \*  
 5 Star - 6lt/min  
 WELS REG No. T25892  
 Available in Chrome, Brushed Nickel and Matte Black



**Vido Flexible Hose Sink Mixer 200mm**  
 Matte Black  
 113-7110 \*  
 5 Star - 6lt/min  
 WELS REG No. T29323  
 Available in Chrome, Brushed Nickel and Matte Black

### More Sink Mixers available in each collection!

Browse our collections in this catalogue or visit our website to explore the full range of Phoenix Sink Mixers. Available in a wide range of designs and finishes.





# Vask New

The Vask collection has been crafted to complement a mid-century modern aesthetic. With its sleek, clean lines and organic form it echoes iconic furniture designs of the era. Lead Free and SwitchMix® compatible (page 88) for added future flexibility, the inspired design has been recognised internationally, receiving a 2025 iF Design Award for the mixer range.

### Featured products:

Vask Vessel Mixer and Wall Basin / Bath Mixer Set Pin Up, Gloss Hand Towel Rail and Soap Dish, Phoenix Five Flat Bar Heated Towel Ladder in Brushed Gold



Chrome



Brushed Nickel



Brushed Carbon



Brushed Gold



**Cold Start  
Cartridge**  
Technology



**Designed &  
Registered**  
by Phoenix



**Sink Mixer 190mm**  
 Chrome  
 139-7330 \*  
 4 Star - 7lt/min  
 WELS REG No. T44095  
 Available in all finishes



**Vessel Mixer**  
 Brushed Nickel  
 139-7900 \*  
 6 Star - 4lt/min  
 WELS REG No. T44100  
 Cold Start Technology\*  
 Available in all finishes



**Basin Mixer**  
 Brushed Carbon  
 139-7700 \*  
 6 Star - 4lt/min  
 WELS REG No. T44099  
 Cold Start Technology\*  
 Available in all finishes



**SwitchMix® Shower / Wall Mixer (Fit-Off Kit Only)**  
 Brushed Gold  
 139-2805 \*  
 + Rough-In Kit: 250-2804  
 Available in all finishes



**SwitchMix® Shower / Wall Mixer Pin Up (Fit-Off Kit Only)**  
 Chrome  
 139-2808 \*  
 + Rough-In Kit: 250-2804  
 Available in all finishes



**SwitchMix® Shower / Bath Diverter Mixer (Fit-Off Kit Only)**  
 Brushed Nickel  
 139-2940 \*  
 + Rough-In Kit: 250-2930  
 Available in all finishes



**SwitchMix® Wall Basin / Bath Mixer Set (Fit-Off Kit Only)**  
 Brushed Carbon  
 139-2812 \*  
 + Rough-In Kit: 250-2811  
 5 Star - 5lt/min  
 WELS REG No. T44097  
 Free-flow aerator included in box for bath installation  
 Available in all finishes



**SwitchMix® Wall Basin / Bath Mixer Set Pin Up (Fit-Off Kit Only)**  
 Brushed Gold  
 139-2814 \*  
 + Rough-In Kit: 250-2811  
 5 Star - 5lt/min  
 WELS REG No. T44389  
 Free-flow aerator included in box for bath installation  
 Available in all finishes



**Wall Basin / Bath Outlet**  
 Chrome  
 139-7610 \*  
 5 Star - 5lt/min  
 WELS REG No. T44098  
 Free-flow aerator included in box for bath installation  
 Available in all finishes

\*Vessel Mixer and Basin Mixer feature Cold Start cartridge technology (see page 31)

SwitchMix® Complete Kits also available

# Phoenix Collections



## Cromford

Equally placed in a modern farmhouse setting as it is in an industrial warehouse, the Cromford collection pays homage to the hard-working innovations of the past. Our in-house design team have thoughtfully crafted an award-winning collection that reflects modern day sensibilities. Pared back and uncomplicated in design, with a nod to history in their finer detail. Cromford wall mixers feature SwitchMix® technology (page 88).

Refer to pages 57–61 for Cromford showers and pages 65–67 for accessories

### Featured products:

Cromford Wall Basin Set,  
Hand Towel Holder, Robe  
Hook and Towel Ladder  
in Brushed Gold



Chrome



Brushed Nickel



Matte Black



Brushed Gold



**Cold Start  
Cartridge**  
Technology



**Designed &  
Registered**  
by Phoenix

# Cromford Collection



**Sink Mixer**  
 Chrome  
 134-7330 \*  
 4 Star - 7lt/min  
 WELS REG No. T41514  
 Available in all finishes



**Exposed Sink Set**  
 Brushed Nickel  
 134-1070 \*  
 4 Star - 7lt/min  
 WELS REG No. T41513  
 Available in all finishes



**Pot Filler**  
 Matte Black  
 134-1900 \*  
 Available in all finishes



**Vessel Mixer**  
 Brushed Gold  
 134-7900 \*  
 6 Star - 4.5lt/min  
 WELS REG No. T41518  
 Cold Start Technology\*  
 Available in all finishes



**Basin Mixer**  
 Chrome  
 134-7700 \*  
 6 Star - 4.5lt/min  
 WELS REG No. T41516  
 Cold Start Technology\*  
 Available in all finishes



**SwitchMix® Shower / Wall Mixer (Fit-Off Kit Only)**  
 Brushed Nickel  
 134-2805 \*  
 + Rough-In Kit: 250-2804  
 Available in all finishes



**SwitchMix® Wall Basin / Bath Mixer Set (Fit-Off Kit Only)**  
 Matte Black  
 134-2812 \*  
 + Rough-In Kit: 250-2811  
 WELS REG No. T42368  
 Free-flow aerator included in box for bath installation  
 Available in all finishes



**Wall Basin / Bath Set**  
 Brushed Gold  
 134-1126 \*  
 5 Star - 5lt/min  
 WELS REG No. T41828  
 Free-flow aerator included in box for bath installation  
 Available in all finishes



**Floor Mounted Bath Mixer with Hand Shower**  
 Chrome  
 134-7451 \*  
 5 Star - 6lt/min  
 WELS REG No. S18316  
 Single function handpiece  
 Available in all finishes



**Basin Set**  
 Brushed Nickel  
 134-1030 \*  
 5 Star - 5lt/min  
 WELS REG No. T44048  
 Available in all finishes

New



**Wall Top Assemblies**  
 Matte Black  
 134-0600 \*  
 Extended spindle option available  
 Available in all finishes



**Wall Basin / Bath Outlet**  
 Brushed Gold  
 134-7610 \*  
 5 Star - 5lt/min  
 WELS REG No. T41515  
 Free-flow aerator included in box for bath installation  
 Available in all finishes

\*Vessel Mixer and Basin Mixer feature Cold Start cartridge technology (see page 31)



Photo: Jody D'Arcy  
Project: Thomasz Group

# Nuage

Nuage draws design inspiration from natural and earthen elements, coming together to blur the lines between the fabricated and organic. The collection will add a modern, sculptural edge to your bathroom with softly curved, artisanal pieces, proudly designed in Australia by our in-house design team.

Refer to pages 56-61 for Nuage showers and pages 68-69 for accessories

**Featured products:**  
Nuage Wall Basin / Bath Mixer  
Set 200mm in Matte White



Chrome



Brushed Nickel



Brushed Carbon



Matte White



## Nuage Collection



**Pull Out Sink Mixer  
200mm**  
Chrome  
129-7105 \*  
5 Star - 5.5lt/min  
WELS REG No. T43296  
Available in all finishes



**Basin Mixer**  
Brushed Nickel  
129-7700 \*  
6 Star - 4.5lt/min  
WELS REG No. T40419  
Available in all finishes



**Vessel Mixer**  
Brushed Carbon  
129-7900 \*  
6 Star - 4.5lt/min  
WELS REG No. T40421  
Available in all finishes



**Shower / Wall Mixer**  
Matte White  
129-7800 \*  
Available in all finishes



**Wall Basin / Bath Mixer  
Set 200mm**  
Chrome  
129-7810 \*  
5 Star - 5lt/min  
WELS REG No. T40420  
Free-flow aerator included  
in box for bath installation  
Available in all finishes



**Wall Basin / Bath Outlet  
200mm**  
Brushed Nickel  
129-7610 \*  
5 Star - 5lt/min  
WELS REG No. T40414  
Free-flow aerator included  
in box for bath installation  
Available in all finishes

### Our Transition to Lead Free



New Australian regulations require all drinking water outlets to use lead free brass by May 2026. We are currently transitioning our affected products to meet this standard. For more details and to view our available Lead Free products, scan the QR code or visit: [phoenixtapware.com.au/lead-free/](https://phoenixtapware.com.au/lead-free/)





Photo: Alyne Media

# Axia

Proudly designed in Australia, this unique collection is a modern twist on tradition. Each piece has been meticulously crafted with crisp detailing and a strong presence. While also highly functional with fine precision etched grooves for easy operation and control, Axia features quality European brass cartridges with a lifetime warranty. The design aesthetic offers architecture lovers a statement tapware collection that will complement a fresh, contemporary environment.

**Featured products:**  
Axia Wall Basin / Bath Mixer  
Set 200mm in Matte Black



Chrome



Brushed Nickel



Matte Black



## Axia Collection



**Hob Sink Mixer Set  
Flexible Hose 230mm**  
(Sink Outlet also available separately)  
Chrome  
117-7570 \*  
5 Star - 6lt/min  
WELS REG No. T39809  
Flexible hose connections provided  
European Standard Brass Cartridge  
Available in all finishes



**Hob Sink Mixer Set  
220mm Gooseneck**  
Brushed Nickel  
117-7550 \*  
4 Star - 7.5lt/min  
WELS REG No. T39810  
Flexible hose connections provided  
European Standard Brass Cartridge  
Available in all finishes



**Basin Mixer**  
Matte Black  
117-7700 \*  
6 Star - 4.5lt/min  
WELS REG No. T33218  
European Standard Brass Cartridge  
Available in all finishes



**Vessel Mixer**  
Chrome  
117-7900 \*  
6 Star - 4.5lt/min  
WELS REG No. T33220  
European Standard Brass Cartridge  
Available in all finishes



**Shower / Wall Mixer**  
Brushed Nickel  
117-7800 \*  
European Progressive Brass Cartridge  
Available in all finishes



**Twin Shower / Wall Mixer**  
Matte Black  
117-7920 \*  
European Progressive Brass Cartridge  
Available in all finishes



**Wall Basin / Bath Mixer Set 200mm**  
Chrome  
117-7810 \*  
5 Star - 6lt/min (basin)  
WELS REG No. T33221  
Free-flow aerator included in box for bath installation  
European Progressive Brass Cartridge  
Available in all finishes



**Wall Basin / Bath Curved Outlet Mixer Set 180mm**  
Brushed Nickel  
117-7815 \*  
5 Star - 6lt/min (basin)  
WELS REG No. T35813  
Free-flow aerator included in box for bath installation  
European Progressive Brass Cartridge  
Available in all finishes



**Hob Mixer**  
Matte Black  
117-7500 \*  
Flexible hose connections provided  
European Standard Brass Cartridge  
Available in all finishes

**Wall Basin / Bath Curved Outlet Hostess Set 180mm**  
Chrome  
117-1125 \*  
5 Star - 6lt/min (basin)  
WELS REG No. T35836  
Free-flow aerator included in box for bath installation  
Available in all finishes

**Wall Top Assemblies**  
Brushed Nickel  
117-0600 \*  
Extended spindle option available  
Available in all finishes

**Wall Basin / Bath Outlet 200mm**  
Matte Black  
117-7610 \*  
4 Star - 6.5lt/min (basin)  
WELS REG No. T33222  
Free-flow aerator included in box for bath installation  
Available in all finishes



# Teel

Fine, slender and elegant, our Teel collection was conceived by exploring how two shapes organically flow together. Today, it is all about proportion, form and balance. With its timeless qualities, Teel easily integrates into many bathrooms and stands the test of time. In 2022, Teel won the prestigious Red Dot Award for 'Best of the Best' in product design. Teel wall mixers feature SwitchMix® technology (page 88).

**Featured product:**

Teel Basin Mixer, Shower / Wall Mixers and Wall Basin / Bath Mixer Set 200mm in Matte Black



Chrome



Brushed Nickel



Brushed Carbon



Matte Black





**Sink Mixer 200mm Squareline**  
 Chrome  
 118-7300 \*  
 5 Star - 6lt/min  
 WELS REG No. T32531  
 Available in all finishes



**Basin Mixer**  
 Chrome  
 118-7700 \*  
 5 Star - 6lt/min  
 WELS REG No. T32536  
 Available in all finishes



**Vessel Mixer**  
 Brushed Nickel  
 118-7900 \*  
 5 Star - 6lt/min  
 WELS REG No. T32634  
 Available in all finishes



**SwitchMix® Shower / Wall Mixer (Fit-Off Kit Only)**  
 Brushed Nickel  
 118-2805 \*  
 + Rough-In Kit: 250-2804  
 Available in all finishes



**SwitchMix® Shower / Bath Diverter Mixer (Fit-Off Kit Only)**  
 Brushed Carbon  
 118-2940 \*  
 + Rough-In Kit: 250-2930  
 Rotary Diverter  
 Available in all finishes



**SwitchMix® Wall Basin / Bath Mixer Set 200mm (Fit-Off Kit Only)**  
 Brushed Carbon  
 118-2812 \*  
 + Rough-In Kit: 250-2811  
 6 Star - 4.5lt/min (basin)  
 WELS REG No. T39500  
 Free-flow aerator included in box for bath installation  
 Available in all finishes



**Wall Outlet 200mm**  
 Matte Black  
 118-7610 \* | Basin  
 118-7620 \* | Bath  
 4 Star - 6.5lt/min (basin)  
 WELS REG No. T32631  
 Available in all finishes



**Wall Shower System**  
 Matte Black  
 118-7490 \*  
 3 Star - 8lt/min  
 WELS REG No. S18420  
 Available in all finishes

**Our Transition to Lead Free**



New Australian regulations require all drinking water outlets to use lead free brass by May 2026. We are currently transitioning our affected products to meet this standard. For more details and to view our available Lead Free products, scan the QR code or visit: [phoenixtapware.com.au/lead-free/](https://phoenixtapware.com.au/lead-free/)



SwitchMix® Complete Kits also available



# Mekko

Intensely stylish, Mekko adds a sense of modernism to any bathroom. As the most tactile object in the house, Mekko not only looks elegant, but feels it too, with its soft, refined edges and sleek surfacing. Mekko wall mixers feature SwitchMix® technology (page 88).

**Featured products:**  
Mekko Sink Mixer 190mm  
Squareline in Brushed Nickel



Chrome



Brushed Nickel



Brushed Carbon



Matte Black



## Mekko Collection



**Sink Mixer 190mm Squareline**  
 Chrome  
 115-7300 \*  
 4 Star - 7lt/min  
 WELS REG No. T32205  
 Available in all finishes



**Basin Mixer**  
 Chrome  
 115-7700 \*  
 5 Star - 6lt/min  
 WELS REG No. T31004  
 Available in all finishes



**Vessel Mixer**  
 Brushed Nickel  
 115-7900 \*  
 5 Star - 6lt/min  
 WELS REG No. T31063  
 Available in all finishes



**SwitchMix® Shower / Wall Mixer (Fit-Off Kit Only)**  
 Brushed Nickel  
 115-2805 \*  
 + Rough-In Kit: 250-2804  
 Available in all finishes



**SwitchMix® Shower / Wall Mixer Round Plate (Fit-Off Kit Only)**  
 Brushed Nickel  
 115-2807 \*  
 + Rough-In Kit: 250-2804  
 Available in all finishes



**SwitchMix® Shower / Bath Diverter Mixer (Fit-Off Kit Only)**  
 Brushed Carbon  
 115-2940 \*  
 + Rough-In Kit: 250-2930  
 Available in all finishes



**Wall Shower System**  
 Brushed Carbon  
 115-7490 \*  
 3 Star - 8lt/min  
 WELS REG No. S18419  
 Available in all finishes



**Floor Mounted Bath Mixer**  
 Matte Black  
 115-7450 \*  
 Available in all finishes



**SwitchMix® Wall Basin / Bath Mixer Set 200mm (Fit-Off Kit Only)**  
 Matte Black  
 115-2812 \*  
 + Rough-In Kit: 250-2811  
 5 Star - 6lt/min (basin)  
 WELS REG No. T41269  
 Free-flow aerator included in box for bath installation  
 Available in all finishes



**Wall Outlet 200mm**  
 Matte Black  
 115-7610 \* | Basin  
 115-7620 \* | Bath  
 4 Star - 6.5lt/min (basin)  
 WELS REG No. T31130  
 Available in all finishes

SwitchMix® Complete Kits also available

## Phoenix Collections



## Gloss MKII

The award-winning Gloss MKII collection refines the proportions of understated curves to create bathroom mixers that have an ease of use, while incorporating contemporary design trends. As function and form have been a focus for our in-house design team, so too have advances such as energy saving Cold Start cartridge technology and SwitchMix® wall mixers (page 88).

Refer to pages 66-67 for Gloss accessories

### Featured products:

Gloss MKII Vessel Mixers  
and Gloss Hand Towel Rail  
in Brushed Carbon



Chrome



Brushed Nickel



Brushed Carbon



Matte Black



Brushed Gold





**Sink Mixer**  
 Chrome  
 135-7300 \*  
 5 Star - 6lt/min  
 WELS REG No. T41517  
 Available in all finishes



**Basin Mixer**  
 Brushed Nickel  
 135-7700 \*  
 6 Star - 4.5lt/min  
 WELS REG No. T41519  
 Cold Start Technology\*  
 Available in all finishes



**Vessel Mixer**  
 Brushed Carbon  
 135-7900 \*  
 6 Star - 4.5lt/min  
 WELS REG No. T41520  
 Cold Start Technology\*  
 Available in all finishes



**SwitchMix® Shower / Wall Mixer (Fit-Off Kit Only)**  
 Matte Black  
 135-2805 \*  
 + Rough-In Kit: 250-2804  
 Available in all finishes



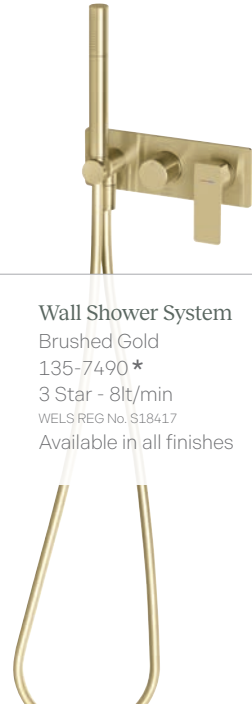
**SwitchMix® Shower / Bath Diverter Mixer (Fit-Off Kit Only)**  
 Brushed Nickel  
 135-2940 \*  
 + Rough-In Kit: 250-2930  
 Available in all finishes



**SwitchMix® Wall Basin / Bath Mixer Set 200mm (Fit-Off Kit Only)**  
 Brushed Carbon  
 135-2812 \*  
 + Rough-In Kit: 250-2811  
 6 Star - 4.5lt/min  
 WELS REG No. T41522  
 Free-flow aerator included in box for bath installation  
 Available in all finishes



**Wall Basin / Bath Outlet 200mm**  
 Brushed Gold  
 135-7610 \*  
 5 Star - 5lt/min  
 WELS REG No. T41512  
 Free-flow aerator included in box for bath installation  
 Available in all finishes



**Wall Shower System**  
 Brushed Gold  
 135-7490 \*  
 3 Star - 8lt/min  
 WELS REG No. S18417  
 Available in all finishes



**Cold Start Cartridge Technology**

**\*Cold Start Technology**

Energy saving Cold Start cartridge technology allows only cold water to be delivered when the tap is operated from the traditional mid-lever position. Hot water only flows if the handle is moved to the left hot position, saving energy by avoiding the unnecessary heating of water for tasks such as cleaning your teeth or washing your hands. The flow of water is ultra-responsive and precise, giving you total control over temperature and water flow.

SwitchMix® Complete Kits also available

\* Full product codes can be found at [phoenixtapware.com.au](http://phoenixtapware.com.au)



## Lexi MKII

Proudly designed in Australia, the award-winning Lexi MKII collection builds on the distinctive linear profile of Lexi with a sleeker, more sophisticated aesthetic. The slender profiled outlet and pin handle is now elongated and sits vertically, offering a more streamlined and complex engineering element. Lexi MKII wall mixers feature SwitchMix® technology (page 88).

Refer to pages 56-61 for matching showers and pages 66-67 for accessories



Chrome



Brushed Nickel



Matte Black

### Featured products:

Lexi MKII Wall Basin Mixer Sets, Vivid Slimline Floor Mounted Bath Mixer and Hand Towel Rail, Heated Triple Towel Rail Round 800mm in Brushed Nickel



**Cold Start Cartridge**  
Technology



**Designed & Registered**  
by Phoenix



**Pull Out Sink Mixer**  
 Chrome  
 123-7105 \*  
 6 Star - 4.5lt/min  
 WELS REG No. T37482  
 Available in all finishes



**Basin Mixer**  
 Brushed Nickel  
 123-7700 \*  
 6 Star - 4.5lt/min  
 WELS REG No. T36606  
 Cold Start Technology\*  
 Available in all finishes



**Vessel Mixer**  
 Matte Black  
 123-7900 \*  
 6 Star - 4.5lt/min  
 WELS REG No. T36605  
 Cold Start Technology\*  
 Available in all finishes



**SwitchMix® Shower / Wall Mixer (Fit-Off Kit Only)**  
 Chrome  
 123-2805 \*  
 + Rough-In Kit: 250-2804  
 Available in all finishes



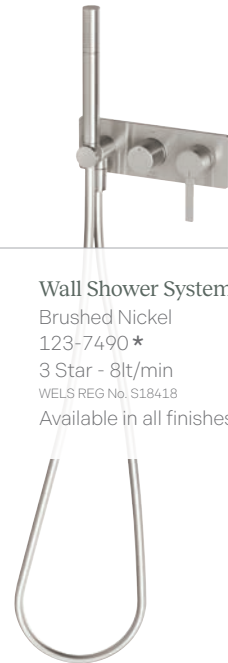
**SwitchMix® Shower / Bath Diverter Mixer (Fit-Off Kit Only)**  
 Brushed Nickel  
 123-2940 \*  
 + Rough-In Kit: 250-2930  
 Rotary Diverter  
 Available in all finishes



**SwitchMix® Wall Mixer Set 200mm (Fit-Off Kit Only)**  
 Matte Black  
 123-2812 \* | Basin  
 123-2822 \* | Bath  
 + Rough-In Kit: 250-2811  
 5 Star - 5lt/min (basin)  
 WELS REG No. T41607  
 Free-flow aerator included in box for bath installation  
 Available in all finishes



**Wall Basin Outlet 200mm**  
 Chrome  
 123-7610 \* | Basin  
 123-7620 \* | Bath  
 5 Star - 5lt/min (basin)  
 WELS REG No. T36603  
 Available in all finishes



**Wall Shower System**  
 Brushed Nickel  
 123-7490 \*  
 3 Star - 8lt/min  
 WELS REG No. S18418  
 Available in all finishes



**Cold Start Cartridge**  
 Technology

**\*Cold Start Technology**

Energy saving Cold Start cartridge technology allows only cold water to be delivered when the tap is operated from the traditional mid-lever position. Hot water only flows if the handle is moved to the left hot position, saving energy by avoiding the unnecessary heating of water for tasks such as cleaning your teeth or washing your hands. The flow of water is ultra-responsive and precise, giving you total control over temperature and water flow.

SwitchMix® Complete Kits also available



Photo: Nat Spada  
Project: Jenn Bliss, Talm Beach House

# Nostalgia

The Nostalgia collection has the glamour and old world charm to enhance any period home. Its elegant design and refinement is the essence of style.

Refer to pages 57 and 60 for Nostalgia showers and pages 66-67 for accessories

**Featured products:**

Nostalgia Lever Basin / Bath Set  
180mm Shepherds Crook in Chrome



Chrome



Chrome / White



Brushed Nickel



Antique Black



## Nostalgia Collection



**Twin Handle Sink Mixer  
230mm Shepherds Crook**  
Chrome  
NS714 \*  
4 Star - 7lt/min  
WELS REG No. T16321  
Also available in  
Chrome / White



**Sink Mixer 160mm  
Gooseneck**  
(220mm available)  
Chrome / White  
NS730 \*  
4 Star - 7.5lt/min  
WELS REG No. T14966  
Also available in Chrome



**Pull Out Sink Mixer**  
Brushed Nickel  
NS710 \*  
4 Star - 6.5lt/min  
WELS REG No. T25722  
Available in all finishes



**Sink Mixer 230mm  
Shepherds Crook**  
Antique Black  
NS738 \*  
4 Star - 7.5lt/min  
WELS REG No. T14968  
Available in all finishes



**Lever Exposed Sink Set  
Shepherds Crook**  
Chrome  
NS135 \*  
3 Star - 8.5lt/min  
WELS REG No. T33231  
Also available in Brushed  
Nickel and Antique Black



**Basin Mixer 160mm  
Shepherds Crook**  
Chrome / White  
NS748 \*  
4 Star - 7.5lt/min  
WELS REG No. T14967  
Available in all finishes



**Lever Basin Set  
Shepherds Crook**  
Brushed Nickel  
NS104L \*  
5 Star - 5lt/min  
WELS REG No. T28266  
Cross handles available  
Also available in Chrome  
and Antique Black



**Shower / Wall Mixer**  
Antique Black  
NS780 \*  
Available in all finishes



**Shower / Bath Diverter  
Mixer**  
Chrome  
NS791 \*  
Rotary Diverter  
Also available in Chrome  
/ White



**Lever Wall Top Assemblies**  
Chrome  
NS060L \*  
Also available in Brushed  
Nickel and Antique Black



**Basin / Bath Outlet 180mm  
Shepherds Crook**  
Brushed Nickel  
NS0900 \*  
Also available in Chrome and  
Antique Black



**Floor Mounted Bath Mixer**  
Chrome / White  
NS745 \*  
Also available in Chrome



## Vivid Slimline SS

The Vivid Slimline SS collection has a refined, slender profile with a thin, elegant, extended pin lever, delivering stunning architectural design while standing up to tough outdoor conditions. This is thanks to the superior corrosion resistance of 316 marine-grade stainless steel, which provides extra years of life and durability. As a testament to the quality of the stainless steel construction, it has been given a lifetime warranty<sup>1</sup>.

Refer to pages 59–60 for Vivid Slimline SS showers and pages 68–69 for matching Rarii SS accessories



Stainless Steel 316

### Featured products:

Vivid Slimline SS 316 Sink  
Mixer 200mm Gooseneck

<sup>1</sup>Applicable to the stainless steel finish only

**Lifetime**<sup>1</sup>  
Warranty Finish

**Designed & Registered**  
by Phoenix

# Vivid Slimline SS Collection



**316 Sink Mixer 200mm Gooseneck**  
 Stainless Steel 316  
 316-7300 \*  
 5 Star - 6lt/min  
 WELS REG No. T36794



**316 Basin Mixer**  
 Stainless Steel 316  
 316-7700 \*  
 5 Star - 5lt/min  
 WELS REG No. T36796



**316 Vessel Mixer**  
 Stainless Steel 316  
 316-7900 \*  
 5 Star - 5lt/min  
 WELS REG No. T36797



**316 Shower / Wall Mixer**  
 Stainless Steel 316  
 316-7800 \*



**316 Wall Basin / Bath Mixer Set 180mm**  
 Stainless Steel 316  
 316-7810 \*  
 5 Star - 5lt/min (basin)  
 WELS REG No. T36795  
 Free-flow aerator included in box for bath installation



**316 Wall Basin / Bath Outlet 180mm**  
 Stainless Steel 316  
 316-7610 \*  
 5 Star - 5lt/min (basin)  
 WELS REG No. T36956  
 Free-flow aerator included in box for bath installation



**316 Shower Arm & 250mm Round Rose**  
 Stainless Steel 316  
 316-5200 \*  
 3 star - 9lt/min  
 WELS REG No. S14275



**316 Microphone Hand Shower**  
 Stainless Steel 316  
 316-6710 \*  
 3 Star - 9lt/min  
 WELS REG No. S16865

Want to keep up with the latest news from Phoenix?

Sign up to our newsletter to receive news and updates by scanning the QR code or clicking the 'Newsletter Sign-Up' link on our website.





## Vivid Slimline

With its slimline lever handles, the Vivid Slimline collection will suit any modern interior. Whether you're building or renovating, Phoenix offers a wide variety of bathroom showers and accessories that will complement any Vivid Slimline mixer.

Refer to pages 57–61 for Vivid Slimline showers and pages 65 & 70–71 for accessories

**Featured products:**

Vivid Slimline Wall Basin  
Outlet 180mm Curved and  
SwitchMix® Shower / Wall  
Mixer in Brushed Nickel



Chrome



Brushed Nickel



Brushed Carbon



Matte Black



Brushed Gold



## Vivid Slimline Collection



**Pull Out Sink Mixer**  
Chrome  
VS7105 ★  
5 Star - 5lt/min  
WELS REG No. T31068  
Available in all finishes



**Hob Sink Outlet 220mm Gooseneck**  
Chrome  
VS0720 ★  
4 Star - 7.5lt/min  
WELS REG No. T31065  
Also available in Brushed Nickel and Matte Black



**Sink Mixer 220mm Squareline**  
(160mm available)  
Brushed Nickel  
VS731 ★  
4 Star - 7.5lt/min  
WELS REG No. T25946  
Available in all finishes



**Sink Mixer 220mm Gooseneck**  
(160mm available)  
Brushed Nickel  
VS733 ★  
4 Star - 7.5lt/min  
WELS REG No. T25948  
Available in all finishes



**Basin Mixer**  
Brushed Carbon  
VS770 ★  
6 Star - 4lt/min  
WELS REG No. T39933  
Curved outlet available  
Extended lever available  
Available in all finishes



**Vessel Mixer Curved Outlet**  
Brushed Carbon  
VS7901 ★  
6 Star - 4lt/min  
WELS REG No. T39935  
Straight outlet available  
Available in all finishes



**SwitchMix® Shower / Wall Mixer 60mm Backplate (Fit-Off Kit Only)**  
Brushed Carbon  
VS2807 ★  
+ Rough-In Kit: 250-2804  
Extended lever available  
Available in all finishes



**SwitchMix® Shower / Bath Diverter Mixer (Fit-Off Kit Only)**  
Brushed Carbon  
VS2940 ★  
+ Rough-In Kit: 250-2930  
Rotary Diverter  
Available in all finishes



**SwitchMix® Wall Basin / Bath Mixer Set 60mm Backplates (Fit-Off Kit Only)**  
Matte Black  
VS2814 ★  
+ Rough-In Kit: 250-2811  
6 Star - 4.5lt/min (basin)  
WELS REG No. T43771  
Available in all finishes



**Floor Mounted Bath Mixer with Hand Shower**  
Matte Black  
VS7451 ★  
3 Star - 8lt/min  
WELS REG No. S13448  
Also available without hand shower  
Available in all finishes



**Wall Outlet 180mm Curved**  
(230mm available)  
Brushed Gold  
VS774 ★ | Basin  
VS776 ★ | Bath  
6 Star - 4lt/min (basin)  
WELS REG No. T15688  
Available in all finishes



**Wall Top Assemblies**  
Brushed Gold  
VS060 ★  
Extended spindle option available  
Available in all finishes

SwitchMix® Complete Kits also available

\* Full product codes can be found at [phoenixtapware.com.au](http://phoenixtapware.com.au) | 39



## Vivid Slimline Plus

With the resurgence of three-piece tapware in full swing, our design team looked at how best to inject the Phoenix creative direction into this traditional tapware form. Vivid Slimline Plus is refined, sophisticated and innovative, with fine detailing the key to its aesthetic charm. Designed with 'form follows function' in mind, this is a great addition for both new and retrofit environments.

**Featured products:**

Vivid Slimline Plus Lever Basin Sets, Lever Wall Top Assemblies and Wall Outlet, Vivid Slimline Hand Towel Rail, Single Towel Rail 600mm and Ormond Compact Twin Shower in Chrome



Chrome



Brushed Nickel



Brushed Carbon



Matte Black



Brushed Gold



## Vivid Slimline Plus Collection



**Basin Set**  
 Chrome  
 119-1000 \*  
 5 Star - 5lt/min  
 WELS REG No. T32812  
 Available in all finishes



**Wall Top Assemblies**  
 Brushed Nickel  
 119-0600 \*  
 Extended spindle option  
 available  
 Available in all finishes



**Lever Basin Set**  
 Brushed Carbon  
 119-1030 \*  
 5 Star - 5.5lt/min  
 WELS REG No. T42752  
 Available in all finishes



**Lever Wall Top Assemblies**  
 Matte Black  
 119-0601 \*  
 Extended spindle option  
 available  
 Available in all finishes



**Wall Basin / Bath Hostess Set 180mm**  
 Brushed Gold  
 119-1125 \*  
 5 Star - 6lt/min (basin)  
 WELS REG No. T35869  
 Free-flow aerator included in  
 box for bath installation  
 Available in all finishes



**Wall Basin / Bath Outlet 180mm**  
 Brushed Gold  
 119-0810 \*  
 5 Star - 5.5lt/min (basin)  
 WELS REG No. T32811  
 Free-flow stream  
 straightener included in box  
 for bath installation  
 Available in all finishes



**Wall Sink Outlet 240mm Squareline**  
 Brushed Nickel  
 119-0870 \*  
 3 Star - 8lt/min  
 WELS REG No. T37724  
 Also available in Chrome  
 and Matte Black



**Wall Sink Outlet 240mm Squareline**  
 Matte Black  
 119-0870 \*  
 3 Star - 8lt/min  
 WELS REG No. T37724  
 Also available in Chrome  
 and Brushed Nickel

### Our Transition to Lead Free



New Australian regulations require all drinking water outlets to use lead free brass by May 2026. We are currently transitioning our affected products to meet this standard. For more details and to view our available Lead Free products, scan the QR code or visit: [phoenixtapware.com.au/lead-free/](https://phoenixtapware.com.au/lead-free/)



## Phoenix Collections



# Vivid Slimline Oval

The elegant contours and delicately merging surfaces of the Vivid Slimline Oval collection makes it a beautiful bathroom focal point. Boasting style and sophistication, this collection will enhance the look and feel of any modern bathroom design. Vivid Slimline Oval wall mixers feature SwitchMix® technology (page 88).

### Featured products:

Vivid Slimline Oval Wall Mixer Set,  
and Floor Mounted Bath Mixer,  
Vivid Slimline Robe Hook and  
Hand Towel Rail in Brushed Gold



Chrome



Brushed Nickel



Matte Black



Brushed Gold



## Vivid Slimline Oval Collection



**Sink Mixer 160mm Gooseneck**  
 Chrome  
 VV735 \*  
 5 Star - 6lt/min  
 WELS REG No. T17003  
 Available in all finishes



**Sink Mixer 220mm Gooseneck**  
 Brushed Nickel  
 VV733 \*  
 5 Star - 6lt/min  
 WELS REG No. T17013  
 Available in all finishes



**Basin Mixer**  
 Matte Black  
 VV770 \*  
 6 Star - 4.5lt/min  
 WELS REG No. T17004  
 Available in all finishes



**Vessel Mixer**  
 Brushed Gold  
 VV790 \*  
 6 Star - 4.5lt/min  
 WELS REG No. T17002  
 Available in all finishes



**SwitchMix® Shower / Wall Mixer (Fit-Off Kit Only)**  
 Chrome  
 VV2805 \*  
 + Rough-In Kit: 250-2804  
 Available in all finishes



**SwitchMix® Shower / Bath Diverter Mixer (Fit-Off Kit Only)**  
 Brushed Nickel  
 VV2940 \*  
 + Rough-In Kit: 250-2930  
 Rotary Diverter  
 Available in all finishes



**Wall Shower System**  
 Matte Black  
 VV7490 \*  
 3 Star - 8lt/min  
 WELS REG No. S18421  
 Available in all finishes



**Floor Mounted Bath Mixer**  
 Brushed Gold  
 VV745 \*  
 Available in all finishes



**SwitchMix® Wall Basin Mixer Set 175mm (Fit-Off Kit Only)**  
 (Bath mixer set available)  
 Chrome  
 VV2812 \*  
 + Rough-In Kit: 250-2811  
 6 Star - 4.5lt/min  
 WELS REG No. T41271  
 Available in all finishes



**Wall Outlet 180mm**  
 Brushed Nickel  
 VV774 \* | Basin  
 VV776 \* | Bath  
 6 Star - 4.5lt/min (basin)  
 WELS REG No. T17007  
 Available in all finishes

SwitchMix® Complete Kits also available



## Vivid Slimline Up

With its upward stretching lever handles and streamlined appearance, Vivid Slimline Up epitomises industrial elegance. Taking cues from the ever-popular Vivid Slimline Collection, this timeless design has a durability to match and is sure to complement any contemporary bathroom space. The design is modern with a slight playfulness, literally switching it up with a fresh and new approach to lever orientation.

### Featured products:

Vivid Slimline Up Shower / Wall Mixer, Vivid Slimline Plus Wall Outlet and Radii Toilet Roll Holder Round Plate in Brushed Nickel



Chrome



Brushed Nickel



Brushed Carbon



Matte Black



Brushed Gold



## Vivid Slimline Up Collection

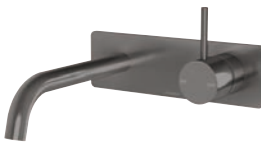


Wall Basin / Bath Mixer Set  
 Chrome  
 112-7813 \*  
 6 Star - 4lt/min (basin)  
WELS REG No. T29379  
 Free-flow aerator included in  
 box for bath installation

Shower / Wall Mixer  
 Chrome  
 112-7800 \*

Wall Basin / Bath Mixer Set  
 Brushed Nickel  
 112-7813 \*  
 6 Star - 4lt/min (basin)  
WELS REG No. T29379  
 Free-flow aerator included in  
 box for bath installation

Shower / Wall Mixer  
 Brushed Nickel  
 112-7800 \*

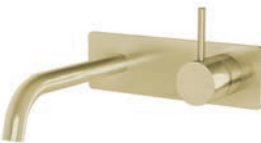


Wall Basin / Bath Mixer Set  
 Brushed Carbon  
 112-7813 \*  
 6 Star - 4lt/min (basin)  
WELS REG No. T29379  
 Free-flow aerator included in  
 box for bath installation

Shower / Wall Mixer  
 Brushed Carbon  
 112-7800 \*

Wall Basin / Bath Mixer Set  
 Matte Black  
 112-7813 \*  
 6 Star - 4lt/min (basin)  
WELS REG No. T29379  
 Free-flow aerator included in  
 box for bath installation

Shower / Wall Mixer  
 Matte Black  
 112-7800 \*



Wall Basin / Bath Mixer Set  
 Brushed Gold  
 112-7813 \*  
 6 Star - 4lt/min (basin)  
WELS REG No. T29379  
 Free-flow aerator included in  
 box for bath installation

Shower / Wall Mixer  
 Brushed Gold  
 112-7800 \*





- Featured products (from left) in Brushed Gold:
- 651-8763 Phoenix Heated Triple Towel Rail Square 800mm
  - 135-2805 Gloss MKII SwitchMix® Shower / Wall Mixer
  - GS896 Gloss Shower Shelf
  - 610-6530 Oxley Twin Shower
  - 135-7610 Gloss MKII Basin / Bath Outlet 200mm
  - GS893 Gloss Hand Towel Rail

# Showers

Explore our wide range of showers, each designed to create the ultimate in sensory awakening experiences. Style and functionality have come together to form an array of showers to suit any luxury, contemporary or traditional bathroom design.

Please note: Due to a change in WELS standards, WELS ratings for some showers in this catalogue may vary from the WELS label displayed on the product packaging.

Featured products (from left) in Brushed Nickel:

- 123-2805 Lexi MKII SwitchMix® Shower / Wall Mixers
- 610-5300 Oxley High-Rise Shower Arm & Rose
- 610-6830 Oxley Rail Shower
- 204-4005 Phoenix Point Drain Round 100mm
- VS745 Vivid Slimline Floor Mounted Bath Mixer
- 650-8763 Phoenix Heated Triple Towel Rail Round 800mm





# The Shower for You

Choosing a shower for your bathroom is not just about the aesthetics. It is also important to consider which type of shower suits your needs. The following guide points out key features and differences within our shower offering to help simplify the decision making and ensure it is the best possible solution for you and your family.

## Spray Pattern Guide

Many Phoenix hand showers come with the added feature of multiple spray patterns. This feature allows you to control the degree of pressure by switching between gentle and intense sprays, so you can enjoy the perfect shower every time.



**A** - NORMAL SPRAY



**B** - MASSAGE SPRAY



**C** - MULTI SPRAY  
NORMAL / MASSAGE



**D** - INTENSE  
MASSAGE SPRAY









**E** - MULTI SPRAY NORMAL  
/ INTENSE MASSAGE

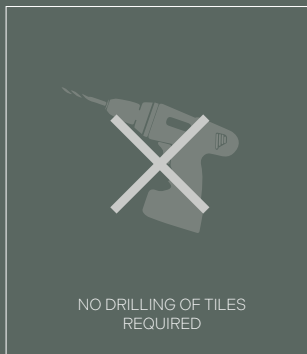
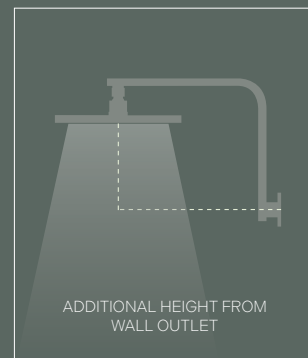
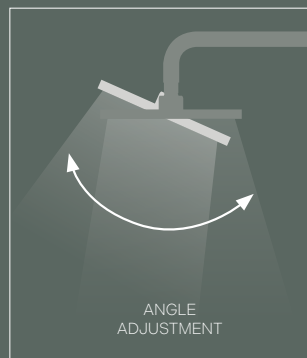
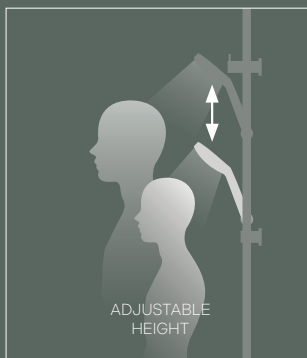


**F** - RINSING SPRAY



**G** - BUBBLE SPRAY

	 TWIN SHOWER	 RAIL SHOWER	 HAND SHOWER	 CEILING SHOWER	 HI-RISE SHOWER	 WALL SHOWER
ADJUSTABLE HEIGHT	●	●				
ANGLE ADJUSTMENT	●			●	●	●
ADDITIONAL HEIGHT	●	●			●	
NO DRILLING REQUIRED			●	●	●	●
EASY REACH CLEANING	●	●	●			
SATURATING STREAM	●			●	●	●



# Phoenix LuxeXP™ Showers



Featured products (from left) in Brushed Carbon:  
119-0600 Vivid Slimline Plus Wall Top Assemblies  
609-5300 Ormond High-Rise Shower Arm & Rose  
609-6630 Ormond Hand Shower  
111-8500 Vivid Slimline Hand Towel Rail

Lifetime  
Warranty Product & Parts



Designed  
in Australia  
by Phoenix



# LuxeXP™

## Patented+ Shower Technology

Embodying the essence of a luxury shower and designed in-house using patented+ technology, Phoenix's LuxeXP™ Showers have been created to redefine showering through the perfect blend of artistry and engineering. With a lifetime warranty, this new smart shower technology is inspired by nature and crafted with innovation to create a luxurious shower experience.

### Behind the Technology

At the heart of LuxeXP™ Showers lies revolutionary patented+ shower technology that creates a showering experience like no other.

The technology used to create the LuxeXP™ spray pattern is widely used in the fuel delivery system for rocket engines and called a **pressure swirl atomiser**. These atomisers utilise the energy from the high-pressure water flow to induce a swirling motion, generating centrifugal forces that cause the water to exit the low-profile nozzles in almond-shaped sheets. These then break down into a multitude of water droplets, enveloping the shower user in a soothing cascade, delivering a truly immersive shower experience.

The shower rose also features **Tesla valves**, a series of interconnected channels that ensure water flows effortlessly at speed, in one direction, while the formation of vortices inhibits reverse flow. This maintains steady water flow, ensuring a consistent showering experience irrespective of water pressure.

Winner of the prestigious 2023 Red Dot Design Award for innovation in design, LuxeXP™ Showers seamlessly combine beauty and functionality.

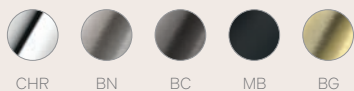
+patent pending



Naturally Inspired.  
Innovatively Crafted.  
Luxurious Experience.



# Phoenix Showers featuring LuxeXP™



## Ormond



Introducing the Ormond collection, featuring LuxeXP™ shower technology, where timeless elegance meets modern design. With its distinctive rounded elements, Ormond adds a touch of sophistication to any bathroom. Crafted with precision and attention to detail, these sleek, curved showers, effortlessly blend form and function.

4 Star WELS options available



### Ormond High-Rise Shower Arm & Rose

Brushed Gold  
609-5300 \*  
3 Star - 8.5lt/min  
WELS REG No. S17643  
- Adjustable shower head angle  
- Brass shower arm  
- Available in five finishes

### LuxeXP™ Shower Rose 250mm

Brushed Gold  
640-5000 \*  
3 Star - 8.5lt/min  
WELS REG No. S17646  
- Adjustable shower head angle  
- Available in five finishes



### Ormond Hand Shower

Brushed Gold  
609-6630 \*  
3 Star - 8lt/min  
WELS REG No. S17626  
- Fits onto existing 1/2" water inlet  
- Combination water inlet and bracket  
- No drilling required  
- Brass bracket  
- Easy-clean, smooth hose  
- Three function handpiece - A, B, C  
- AS2845.1 compliant dual check valves  
- Available in five finishes

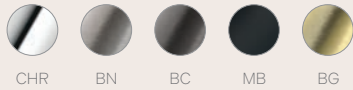
### Ormond Rail Shower

Brushed Gold  
609-6830 \*  
3 Star - 8lt/min  
WELS REG No. S17644  
- Fits onto existing 1/2" water inlet  
- Adjustable bottom pillar for flexible mounting positions  
- Rotary slider for adjustable shower height  
- Stainless steel rail, metal brackets and slider  
- Easy-clean, smooth hose  
- Three function handpiece - A, B, C  
- AS2845.1 compliant dual check valves  
- Available in five finishes

### Ormond Twin Shower

(Compact Twin Shower available)  
Brushed Gold  
609-6530 \*  
3 Star - 8.5lt/min (overhead)  
7lt/min (handheld)  
WELS REG No. S17695  
- Fits onto existing 1/2" plumbing  
- Top inlet water diverter  
- Adjustable bottom pillar for flexible mounting positions  
- Brass rail and brackets, metal slider  
- Easy-clean, smooth hose  
- Three function handpiece - A, B, C  
- AS2845.1 compliant dual check valves  
- Available in five finishes

# Phoenix Showers featuring LuxeXP™



## Oxley

The cutting edge Oxley shower collection, featuring LuxeXP™ shower technology, allows bold and contemporary design to take centre stage. With its striking square elements, Oxley brings a modern aesthetic to your bathroom space, offering a unique blend of geometric precision and functionality.

4 Star WELS options available



### Oxley Hand Shower

Brushed Carbon

610-6630 \*

3 Star - 8lt/min

WELS REG No. S17653

- Fits onto existing 1/2" water inlet
- Combination water inlet and bracket
- No drilling required
- Brass bracket
- Easy-clean, smooth hose
- Three function handpiece - **A, B, C**
- AS2845.1 compliant dual check valves
- Available in five finishes



### Oxley High-Rise Shower Arm & Rose

Brushed Carbon

610-5300 \*

3 Star - 8.5lt/min

WELS REG No. S17647

- Adjustable shower head angle
- Brass shower arm
- Available in five finishes



### LuxeXP™ Shower Rose 250mm

Brushed Carbon

640-5000 \*

3 Star - 8.5lt/min

WELS REG No. S17646

- Adjustable shower head angle
- Available in five finishes



### Oxley Rail Shower

Brushed Carbon

610-6830 \*

3 Star - 8lt/min

WELS REG No. S17657

- Fits onto existing 1/2" water inlet
- Adjustable bottom pillar for flexible mounting positions
- Rotary slider for adjustable shower height
- Brass rail, metal brackets and slider
- Easy-clean, smooth hose
- Three function handpiece - **A, B, C**
- AS2845.1 compliant dual check valves
- Available in five finishes



### Oxley Twin Shower

Brushed Carbon

610-6530 \*

3 Star - 8lt/min (overhead)

4 Star - 7lt/min (handheld)

WELS REG No. S17625

- Fits onto existing 1/2" plumbing
- Top inlet water diverter
- Adjustable bottom pillar for flexible mounting positions
- Brass rail and brackets, metal slider
- Easy-clean, smooth hose
- Three function handpiece - **A, B, C**
- AS2845.1 compliant dual check valves
- Available in five finishes

## Phoenix Showers



### Rush Twin Shower

Chrome  
 RU6530 \*  
 3 Star - 8.5lt/min (overhead)  
 6.5lt/min (handheld)  
 WELS REG No. S18120  
 3 function handpiece -  
 A, B, C



### Nuage Twin Shower

Brushed Nickel  
 129-6530 \*  
 4 Star - 6.5lt/min (overhead)  
 4 Star - 6.5lt/min (handheld)  
 WELS REG No. S17205  
 3 function handpiece -  
 A, B, C  
 Also available in Chrome,  
 Brushed Carbon and Matte White



### Lexi Twin Shower

Brushed Nickel  
 LE726 \*  
 3 Star - 8.5lt/min (overhead)  
 3 Star - 8lt/min (handheld)  
 WELS REG No. S18249  
 Single function handpiece - A  
 Also available in Chrome and  
 Matte Black



### Vivid Twin Shower

Matte Black  
 V726 \*  
 5 Star - 6lt/min (overhead)  
 5 Star - 6lt/min (handheld)  
 WELS REG No. S18278  
 5 function handpiece -  
 A, B, C, D, E  
 Also available in Chrome,  
 Brushed Nickel, Brushed Carbon  
 and Brushed Gold



## Phoenix Showers



### Vivid Slimline Twin Shower

Brushed Gold  
VS6500 \*  
5 Star - 6lt/min (overhead)  
5 Star - 6lt/min (handheld)  
WELS REG No. S18339  
3 function handpiece -  
A, B, C  
Also available in Chrome,  
Brushed Nickel, Brushed  
Carbon and Matte Black



### Cromford Twin Shower

Brushed Gold  
134-6510 \*  
4 Star - 6.5lt/min (overhead)  
4 Star - 6.5lt/min (handheld)  
WELS REG No. S17208  
Single function handpiece - A  
Also available in Chrome,  
Brushed Nickel and Matte  
Black



### Nostalgia Lever Exposed Shower Set

Chrome  
NS123L \*  
3 Star - 8.5lt/min  
WELS REG No. S13709  
New installations only  
Requires separate 1/2" hot  
and cold water inlets



### Lexi Compact Twin Shower

Brushed Nickel  
LE6510 \*  
3 Star - 8.5lt/min (overhead)  
3 Star - 8lt/min (handheld)  
WELS REG No. S18097  
Single function handpiece - A  
Also available in Chrome,  
Brushed Carbon and Matte  
Black



### Vivid Slimline Compact Twin Shower

Brushed Carbon  
VS6510 \*  
5 Star - 6lt/min (overhead)  
5 Star - 6lt/min (handheld)  
WELS REG No. S18381  
3 function handpiece -  
A, B, C  
Also available in Chrome,  
Brushed Nickel, Matte Black  
and Brushed Gold



### Lexi Deluxe Rail Shower

Matte Black  
LE685 \*  
3 Star - 8.5lt/min  
WELS REG No. S18250  
Single function handpiece - A  
Also available in Chrome and  
Brushed Nickel



### Rush Rail Shower

Chrome  
RU6810 \*  
4 Star - 7lt/min  
WELS REG No. S18252  
3 function handpiece -  
A, B, C



### Cromford Rail Shower

Brushed Nickel  
134-6810 \*  
4 Star - 7lt/min  
WELS REG No. S17134  
Single function handpiece - A  
Also available in Chrome,  
Matte Black and Brushed Gold

# Phoenix Showers



**Nuage Rail Shower**  
 Brushed Carbon  
 129-6830 \*  
 4 Star - 6.5lt/min  
 WELS REG No. S17133  
 3 function handpiece -  
 A, B, C  
 Also available in Chrome,  
 Brushed Nickel and Matte  
 White



**Vivid Rail Shower**  
 (Premium Rail Shower available)  
 Brushed Carbon  
 V685 \*  
 5 Star - 6lt/min  
 WELS REG No. S18124  
 5 function handpiece -  
 A, B, C, D, E  
 Also available in Chrome,  
 Brushed Nickel, Matte Black  
 and Brushed Gold



**Vivid Slimline Rail Shower**  
 (Extended Rail Shower available)  
 Brushed Gold  
 VS685 \*  
 5 Star - 6lt/min  
 WELS REG No. S18126  
 3 function handpiece - A, B, C  
 Also available in Chrome,  
 Brushed Nickel, Brushed Carbon  
 and Matte Black



New Finish

**Vivid Slimline Water Through Rail Shower**  
 Brushed Nickel  
 VS687 \*  
 5 Star - 6lt/min  
 WELS REG No. S18127  
 3 function handpiece -  
 A, B, C  
 Also available in Chrome,  
 Brushed Nickel, Matte Black  
 and Brushed Gold



**Rush Hand Shower**  
 Chrome  
 RU6610 \*  
 4 Star - 7lt/min  
 WELS REG No. S18117  
 3 function handpiece -  
 A, B, C



**Lexi Hand Shower**  
 Brushed Nickel  
 LE683 \*  
 3 Star - 8.5lt/min  
 WELS REG No. S18096  
 Single function handpiece - A  
 Also available in Chrome and  
 Matte Black



**Nuage Hand Shower**  
 Brushed Carbon  
 129-6630 \*  
 4 Star - 6.5lt/min  
 WELS REG No. S17206  
 3 function handpiece -  
 A, B, C  
 Also available in Chrome,  
 Brushed Nickel and Matte  
 White



**Vivid Hand Shower**  
 Matte Black  
 V683 \*  
 5 Star - 6lt/min  
 WELS REG No. S18122  
 5 function handpiece  
 - A, B, C, D, E  
 Also available in Chrome,  
 Brushed Nickel, Brushed  
 Carbon and Brushed Gold



Featured products in Brushed Carbon:

- V527 Vivid Shower Rose 230mm Round
- V6000 Vivid Shower Arm 400mm Round
- VS6710 Vivid Slimline Microphone Hand Shower
- 112-7800 Vivid Slimline Up Shower / Wall Mixers
- 111-8600 Vivid Slimline Shower Shelf
- VS745 Vivid Slimline Floor Mounted Bath Mixer



**Cromford Hand Shower**  
 Brushed Gold  
 134-6610 \*  
 4 Star - 7lt/min  
 WELS REG No. S17137  
 Single function handpiece - **A**  
 Also available in Chrome,  
 Brushed Nickel and Matte Black



**Vivid Slimline Hand Shower**  
 Brushed Carbon  
 VS6630 \*  
 5 Star - 6lt/min  
 WELS REG No. S18129  
 3 function handpiece - **A, B, C**  
 Also available in Chrome,  
 Brushed Nickel, Matte Black  
 and Brushed Gold



**Vivid Slimline SS 316  
 Microphone Hand Shower**  
 Stainless Steel 316  
 316-6710 \*  
 3 Star - 9lt/min  
 WELS REG No. S16865  
 Single function handpiece - **A**



**Vivid Slimline Microphone  
 Hand Shower**  
 Brushed Gold  
 VS6710 \*  
 3 star - 8.5lt/min  
 WELS REG No. S18375  
 Single function handpiece - **A**  
 Also available in Chrome,  
 Brushed Nickel, Brushed  
 Carbon and Matte Black

\*Full product codes are based on the finish selection

# Shower Arms & Roses

Discover the comprehensive shower arm and rose range, available in our Phoenix shower collection. Create your own customised look by matching shapes, sizes, heights or finishes to suit your requirements and bathroom style.



**Cromford High-Rise Shower Arm & Rose**

Brushed Gold  
134-5300 \*  
4 Star - 7lt/min  
WELS REG No. S17136  
Also available in Chrome, Brushed Nickel and Matte Black



**Nostalgia Vintage Shower Arm & Rose**

Antique Black  
NS125 \*  
3 Star - 8lt/min  
WELS REG No. S13710  
Also available in Chrome and Brushed Nickel



**Nuage High-Rise Shower Arm & Rose**

Brushed Carbon  
129-5300 \*  
4 Star - 7lt/min  
WELS REG No. S17135  
Also available in Chrome, Brushed Nickel and Matte White



**Rush High-Rise Shower Arm & 200 x 250mm Rose**

Chrome  
RU526 \*  
3 Star - 8lt/min  
WELS REG No. S06056



**Vivid Shower Arm 400mm & 230mm Round Rose**

(High-Rise option available)  
Chrome  
V5200 \*  
3 Star - 8.5lt/min  
WELS REG No. S10507



**Vivid Slimline SS 316 Shower Arm & 250mm Round Rose**

Stainless Steel 316  
316-5200 \*  
3 Star - 9lt/min  
WELS REG No. S14275



**Lexi Shower Arm 400mm Square**

Brushed Carbon  
LE6000 \*  
Also available in Chrome, Brushed Nickel and Matte Black



**Vivid Shower Arm 400mm Round**

Brushed Gold  
V6000 \*  
Also available in Chrome, Matte Black, Brushed Nickel and Brushed Carbon

## Phoenix Showers



**Lexi Ceiling Arm Only  
300mm Square Arm**  
(150mm, 450mm available)  
Matte Black  
LE6091 \*  
Also available in Chrome,  
Brushed Nickel and Brushed  
Carbon



**Vivid Ceiling Arm Only  
300mm**  
(150mm, 450mm available)  
Brushed Carbon  
V544 \*  
Also available in Chrome,  
Brushed Nickel, Matte Black,  
Brushed Gold and Matte White



**Rush High-Rise  
Shower Arm**  
Matte Black  
RU522 \*  
Also available in Chrome,  
Brushed Nickel, Brushed  
Carbon and Brushed Gold



**Vivid Slimline High-Rise  
Shower Arm Round Plate**  
(Square plate available)  
Brushed Carbon  
VS6000 \*  
Also available in Chrome,  
Brushed Nickel, Matte Black  
and Brushed Gold



**Vivid Shower Rose  
230mm Round**  
Brushed Carbon  
V527 \*  
5 Star - 6lt/min  
WELS REG No. S16672  
Also available in Chrome,  
Matte Black, Brushed  
Nickel and Brushed Gold



**Vivid Shower Rose  
300mm Round**  
Brushed Gold  
V5005 \*  
3 Star - 8.5lt/min  
WELS REG No. S16864  
Also available in Chrome,  
Matte Black, Brushed  
Nickel and Brushed Carbon



**Nuage Shower Rose**  
Brushed Nickel  
129-5000 \*  
4 Star - 7lt/min  
WELS REG No. S17428  
Also available in Chrome,  
Brushed Carbon and  
Matte White



**Cromford Shower Rose**  
Matte Black  
134-5000 \*  
4 Star - 7lt/min  
WELS REG No. S17408  
Also available in Chrome,  
Brushed Carbon and  
Brushed Gold



**Lexi Shower Rose  
200mm Square**  
(250 available in Chrome)  
Brushed Carbon  
LE5100 \*  
3 Star - 9lt/min  
WELS REG No. S14319  
Also available in Chrome,  
Brushed Nickel and Matte Black



**Vivid Slimline Shower  
Rose 300mm Square**  
(Round design available)  
Stainless Steel  
VS5001 \*  
3 Star - 8lt/min  
WELS REG No. S18131



**Vivid Slimline Flush  
Mount Ceiling Shower  
300mm Round**  
Chrome  
VS5090 \*  
3 Star - 9lt/min  
WELS REG No. S14551



**Vivid Slimline Flush  
Mount Ceiling Shower  
300mm Square**  
Chrome  
VS5091 \*  
3 Star - 8lt/min  
WELS REG No. S18130



Featured products (from left) in Brushed Gold:

- RA897 Rarii Robe Hook Round Plate
- V5005 Vivid Shower Rose 300mm Round
- V6000 Vivid Shower Arm 400mm Round
- 202-1305 Phoenix Point Drain Tile Insert 130mm
- VS7490 Vivid Slimline Wall Shower System
- VS2814 Vivid Slimline SwitchMix Wall Basin / Bath Mixer Set 60mm Backplates
- 650-8763 Phoenix Heated Triple Towel Rail Round 800mm



# Outlets & Accessories

Add a touch of elegance to any room with our unique and contemporary collection of organic outlets. Complete any bathroom look with our carefully selected accessory ranges, each designed to compliment our tapware collections. With an accessory solution for every bathroom need, all pieces are created to provide style as well as the optimum function.



**Designer Swivel Bath Outlet 230mm Round**

Brushed Nickel  
121-0880 \*

Also available in Chrome, Brushed Carbon, Matte Black and Brushed Gold



**Designer Swivel Bath Outlet 230mm Square**

Matte Black  
121-0881 \*

Also available in Chrome, Brushed Nickel, Brushed Carbon and Brushed Gold



**Vivid Wall Bath Outlet 200mm**

Brushed Carbon  
V776 \*

Also available in Chrome, Brushed Nickel, Matte Black and Brushed Gold

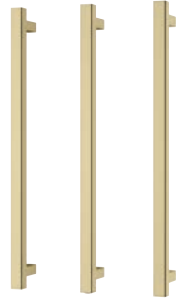
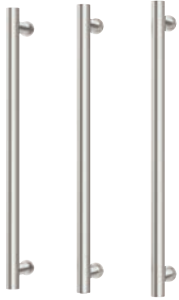


**Vivid Wall Bath Outlet 32 x 300mm Angled**

Brushed Gold  
V817 \*

Also available in Chrome, Brushed Nickel, Brushed Carbon and Matte Black

## Towel Rails & Ladders



**Phoenix Heated Triple Towel Rail Round 600mm**

(800mm available)  
Brushed Nickel  
650-8762 \*  
Single rails available  
Rail hooks available separately  
Available in all finishes

**Phoenix Heated Triple Towel Rail Square 600mm**

(800mm available)  
Brushed Gold  
651-8762 \*  
Single rails available  
Rail hooks available separately  
Available in all finishes



**Cromford Heated Towel Ladder 550 x 750mm**

Brushed Nickel  
134-8750 \*  
Also available in Chrome, Matte Black and Brushed Gold

**Phoenix Five Flat Bar Heated Towel Ladder 550 x 740mm**

Brushed Gold  
652-8750 \*  
Square plate available  
Non-heated options available  
Also available in Chrome, Matte Black, Brushed Nickel and Brushed Carbon

**Radii Heated Towel Ladder 750 x 740mm**

(550 x 740mm available)  
Brushed Carbon  
RA8751 \*  
Round and square dress plates included  
Non-heated options available  
Also available in Chrome, Matte Black, Brushed Nickel and Brushed Gold

**Vivid Slimline Towel Ladder 500 x 800mm**

Matte Black  
111-8700 \*  
Also available in Chrome, Brushed Nickel and Brushed Carbon

\*Full product codes are based on the finish selection

# Cromford



Chrome



Brushed Nickel



Matte Black



Brushed Gold



## Double Towel Rail 800mm

Chrome

134-8130 \*

Single towel rail available

Available in all finishes

# Gloss



Chrome



Brushed Nickel



Brushed Carbon



Matte Black



Brushed Gold



## Double Towel Rail 800mm

Chrome

GS811 \*

Single towel rail available

Available in all finishes

# Lexi MKII



Chrome



Brushed Nickel



Matte Black



## Double Towel Rail 800mm

(600mm available)

Chrome

123-8130 \*

Single towel rail available

Available in all finishes

# Nostalgia



Chrome



Brushed Nickel



Antique Black



## Double Towel Rail 760mm

Chrome

NS811 \*

Single towel rail available

Available in all finishes

## Phoenix Accessories



**Toilet Roll Holder**  
Brushed Nickel  
134-8200 \*  
Available in all finishes



**Robe Hook**  
Brushed Nickel  
134-8400 \*  
Available in all finishes



**Hand Towel Holder**  
Matte Black  
134-8500 \*  
Available in all finishes



**Glass Shelf**  
Brushed Gold  
134-8600 \*  
Available in all finishes



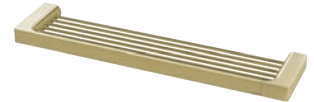
**Toilet Roll Holder**  
Brushed Nickel  
GS892 \*  
Available in all finishes



**Robe Hook**  
Brushed Carbon  
GS897 \*  
Available in all finishes



**Hand Towel Rail**  
Matte Black  
GS893 \*  
Available in all finishes



**Shower Shelf**  
Brushed Gold  
GS896 \*  
Available in all finishes



**Toilet Roll Holder**  
Brushed Nickel  
123-8200 \*  
Available in all finishes



**Robe Hook**  
Brushed Nickel  
123-8400 \*  
Available in all finishes



**Hand Towel Rail 350mm**  
Matte Black  
123-8500 \*  
Available in all finishes



**Shower Shelf**  
Matte Black  
123-8600 \*  
Available in all finishes



**Toilet Roll Holder**  
Brushed Nickel  
NS892 \*  
Available in all finishes



**Robe Hook**  
Brushed Nickel  
NS897 \*  
Available in all finishes



**Hand Towel Holder**  
Antique Black  
NS893 \*  
Available in all finishes



**Glass Shelf**  
Antique Black  
NS896 \*  
Available in all finishes

# Phoenix Accessories

## Nuage



Chrome



Brushed Nickel



Brushed Carbon



Matte White



### Double Towel Rail 800mm

(600mm available)

Chrome

129-8130 \*

Single towel rail available

Available in all finishes

## Radii Round Plate



Chrome



Brushed Nickel



Brushed Carbon



Matte Black



Brushed Gold



### Double Towel Rail 800mm

(600mm available)

Chrome

RA812 \*

Single towel rail available

Available in all finishes

## Radii Square Plate



Chrome



Brushed Nickel



Brushed Carbon



Matte Black



### Double Towel Rail 800mm

(600mm available)

Chrome

RS812 \*

Single towel rail available

Available in all finishes

## Radii SS



Stainless Steel 316



### 316 Double Towel Rail 800mm

(600mm available)

Stainless Steel 316

RA812 \*

Single towel rail available

Phoenix Accessories



**Toilet Roll Holder**  
Brushed Nickel  
129-8200 \*  
Available in all finishes



**Robe Hook**  
Brushed Carbon  
129-8400 \*  
Available in all finishes



**Hand Towel Rail**  
Brushed Carbon  
129-8500 \*  
Available in all finishes



**Shower Shelves**  
Matte White  
129-8600 \*  
Two shelves which can be mounted separately  
Available in all finishes



**Toilet Roll Holder**  
Brushed Nickel  
RA892 \*  
Available in all finishes



**Robe Hook**  
Brushed Carbon  
RA897 \*  
Available in all finishes



**Hand Towel Holder**  
Matte Black  
RA893 \*  
Available in all finishes



**Metal Shelf**  
Brushed Gold  
RA886 \*  
Available in all finishes



**Toilet Roll Holder**  
Brushed Nickel  
RS892 \*  
Available in all finishes



**Robe Hook**  
Brushed Carbon  
RS897 \*  
Available in all finishes



**Hand Towel Holder**  
Matte Black  
RS893 \*  
Available in all finishes



**Metal Shelf**  
Chrome  
RS886 \*  
Available in all finishes



**316 Toilet Roll Holder**  
Stainless Steel 316  
RA892 \*



**316 Robe Hook**  
Stainless Steel 316  
RA897 \*



**316 Hand Towel Holder**  
Stainless Steel 316  
RA893 \*



**316 Shower Shelf**  
Stainless Steel 316  
RA886 \*

\*Full product codes are based on the finish selection

# Vivid Slimline



Chrome



Brushed Nickel



Brushed Carbon



Matte Black



Brushed Gold



Double Towel Rail 800mm

(600mm available)

Chrome

111-8130 \*

Single towel rail available

Available in all finishes

# Vivid



Chrome



Double Towel Rail 760mm

(900mm available)

Chrome

VA811 \*

Single towel rail available



## Phoenix Accessories



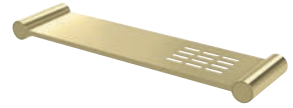
**Toilet Roll Holder**  
Brushed Nickel  
111-8200 \*  
Available in all finishes



**Robe Hook**  
Brushed Carbon  
111-8400 \*  
Available in all finishes



**Hand Towel Rail 350mm**  
Matte Black  
111-8500 \*  
Available in all finishes



**Metal Shelf**  
Brushed Gold  
111-8600 \*  
Available in all finishes



**Toilet Roll Holder**  
Chrome  
VA892 \*



**Robe Hook**  
Chrome  
VA897 \*



**Hand Towel Holder**  
Chrome  
VA893 \*



**Metal Shelf**  
Chrome  
VA886 \*

### Want to keep up with the latest news from Phoenix?

Sign up to our newsletter to receive news and updates by scanning the QR code or clicking the 'Newsletter Sign-Up' link on our website.



# Phoenix Sinks

Phoenix Sinks are offered in four distinct collections, each showcasing unique design elements and high-quality materials that reflect our signature blend of style and functionality. Paired with a range of accessories, these sinks elevate kitchen performance and design.

# Drains, Wastes & Traps

Phoenix's drainage solutions provide durable, efficient water management with a range of quality Point and Channel Drains. Pop Up Wastes and Bottle Traps are available in five of our contemporary finishes, which ensure a cohesive and functional bathroom aesthetic.

Featured products in Stainless Steel:

- 303-3001-51 2000 Series 1 & ½ Bowl Sink
- 316-7300-51-1 Vivid Slimline SS 316 Sink Mixer 200mm Gooseneck
- 201-2245-51 Phoenix V Channel Drain Heelguard 100mm





## Sinks



Polished  
Stainless  
Steel



Stainless  
Steel



Brushed  
Carbon



Matte  
Black



Matte  
White



### 1000 Series Single Bowl Sink with Drainer 765 x 480mm (180mm depth)

Polished Stainless Steel  
300-1301 \*

Basket waste included

Also available: With Taphole (left or right), 1 & 1/3 Bowl,  
1 & 3/4 Bowl, Double Bowl, Laundry Trough

## Drains



Stainless  
Steel 316



Matte  
Black



### Phoenix Point Drain Heelguard 100mm Outlet 76mm

Stainless Steel 316  
202-2204 \*

Also available: Tile Insert  
design, 130mm size with  
90mm outlet, Matte Black  
options



### Phoenix Point Drain Round 100mm Outlet 90mm

Matte Black  
204-4005 \*

Also available: 76mm  
outlet, Stainless Steel  
options

## Wastes & Traps



Chrome



Brushed  
Nickel



Brushed  
Carbon



Matte  
Black



Brushed  
Gold



### 40mm Dome Pop Up Universal Waste

Chrome  
800-8900 \*  
Available in all finishes



### 40mm Dome Pop Up Universal Waste

Brushed Nickel  
800-8900 \*  
Available in all finishes

## Phoenix Sinks, Drains, Wastes & Traps



### 2000 Series Single Bowl Sink 411 x 461mm (228mm depth)

Stainless Steel  
303-0002 \*  
Basket waste included  
Also available: Large Single Bowl, 1 & 1/2 Bowl, Double Bowl, Laundry Sink



### 4000 Series Single Bowl Sink 396 x 466mm (230mm depth)

Brushed Carbon  
310-0002 \*  
Basket waste w/ cover included  
Also available: Large Single Bowl, Extra Large Single Bowl, 1 & 3/4 Bowl (left or right), Double Bowl  
Also available in Stainless Steel  
Sink base protector included for Brushed Carbon finish



### 5000 Series Single Bowl Sink 416 x 466mm (220mm depth)

Matte Black  
312-0002 \*  
Basket waste w/ cover included  
Also available: Large Single Bowl, 1 & 3/4 Bowl (left or right), Double Bowl  
Also available in Matte White



### Sink Accessories Stainless Steel Colander

Stainless Steel  
340-8560 \*  
Also available: Benchtop Drainer Tray, Roller Matt, Wire Basket, Wooden Chopping Boards  
Also available: Sink Waste and Overflow in multiple finishes



### Phoenix Flat Slimline Channel Drain 30 x 600mm Outlet 65mm

Matte Black  
205-4413 \*  
Also available: Lengths 750 and 900mm, Stainless Steel options



### Phoenix Flat Channel Drain Heelguard 75 x 600mm Outlet 45mm

Stainless Steel 316  
200-2111 \*  
Also available: Tile Insert design, lengths 750, 900 and 1200mm, 65mm outlet



### Phoenix V Channel Drain Tile Insert 75 x 600mm Outlet 45mm

Stainless Steel 316  
201-1111 \*  
Also available: Heelguard design, lengths 750, 900 and 1215mm, 65mm outlet, Matte Black options, 100mm width with 90mm outlet



### Phoenix V Kit Channel Drain Tile Insert 75 x 1215mm Outlet 45mm

Stainless Steel 316  
203-1141 \*  
Also available: Heelguard design, 65mm outlet, Joiner Plates available separately



40mm Flat Pop Up Universal Waste  
Brushed Carbon  
800-8910 \*  
Available in all finishes

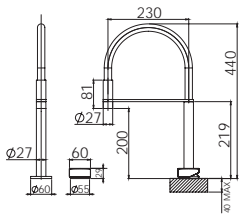


40mm Bottle Trap  
Matte Black  
800-8950 \*  
Available in all finishes

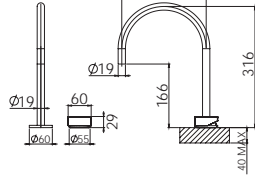


40mm Bottle Trap  
Brushed Gold  
800-8950 \*  
Available in all finishes

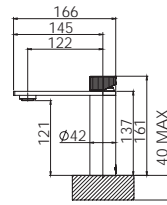
AXIA



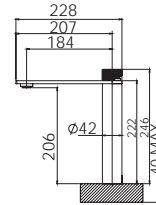
117-7570



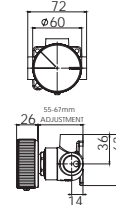
117-7550



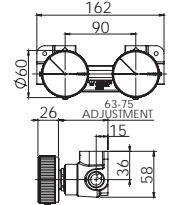
117-7700



117-7900

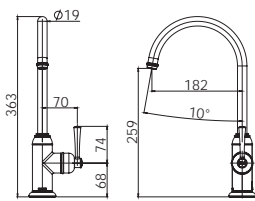


117-7800

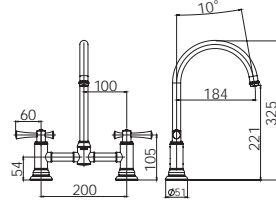


117-7920

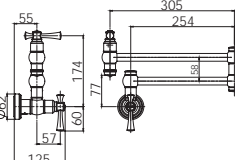
CROMFORD



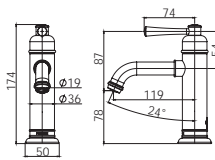
134-7330



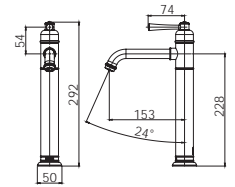
134-1070



134-1900

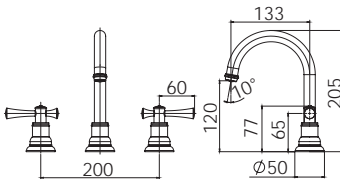


134-7700

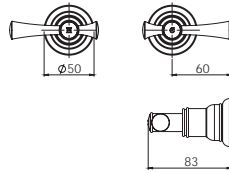


134-7900

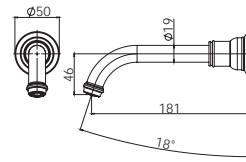
CROMFORD cont.



134-1030

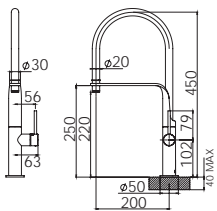


134-0600 / 0670



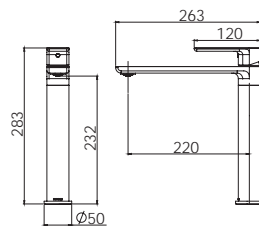
134-7610

DESIGNER SINK MIXERS

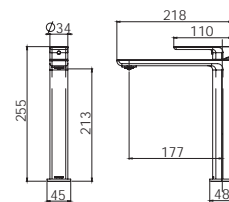


113-7110

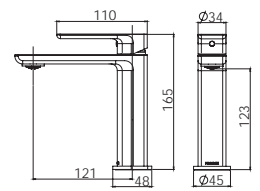
GLOSS MKII



135-7300



135-7900

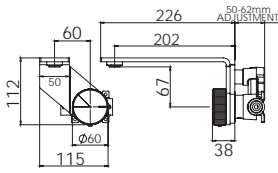


135-7700

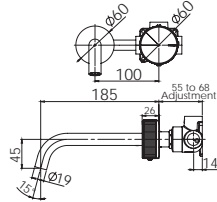
# Line Drawings

Can't find the line drawing you are looking for?  
Simply visit the Phoenix website to view the complete range of line drawings and other technical information

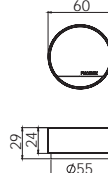
[phoenixtapware.com.au](http://phoenixtapware.com.au)



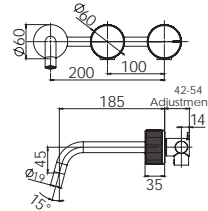
117-7810



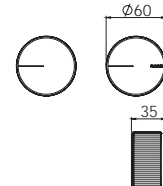
117-7815



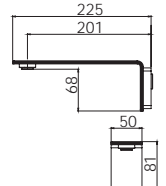
117-7500



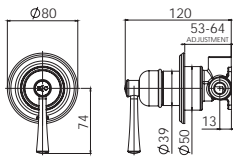
117-1125



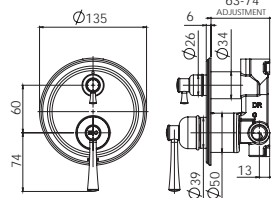
117-0600



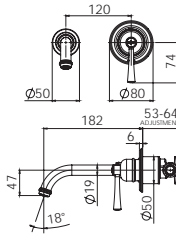
117-7610



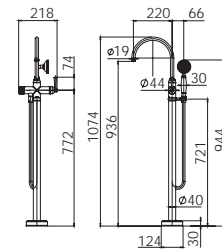
134-2805



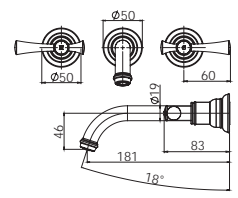
134-2940



134-2812

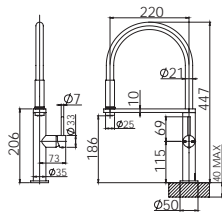


134-7451

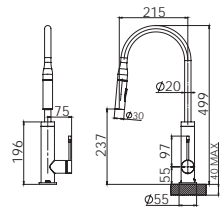


134-1126

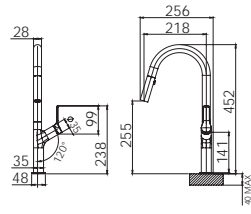
## DESIGNER SINK MIXERS



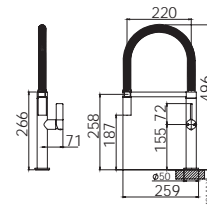
10473100



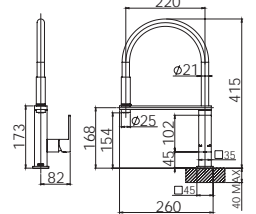
126-7330



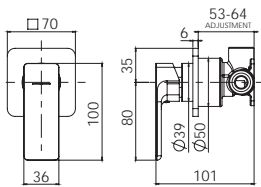
133-7120



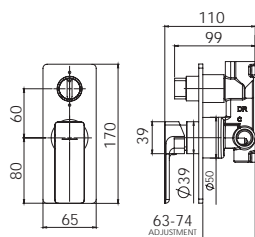
10273100



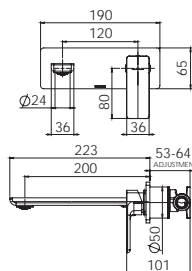
10373100



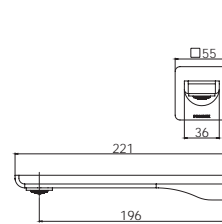
135-2805



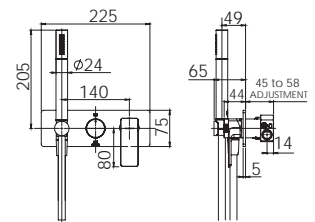
135-2940



135-2812



135-7610



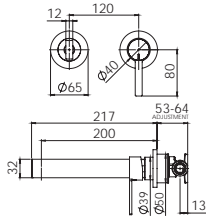
135-7490



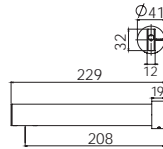
# Line Drawings

Can't find the line drawing you are looking for?  
Simply visit the Phoenix website to view the complete range of line drawings and other technical information

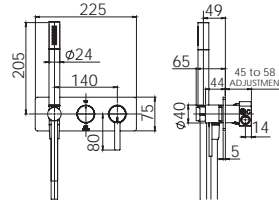
[phoenixtapware.com.au](http://phoenixtapware.com.au)



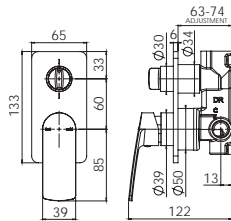
123-2812 / 123-2822



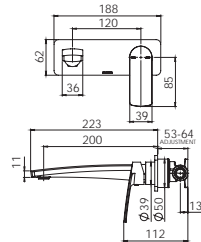
123-7610 / 123-7620



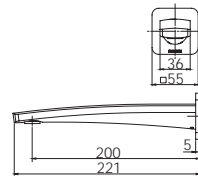
123-7490



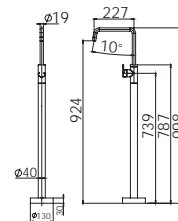
115-2940



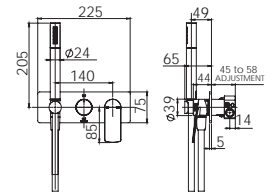
115-2812



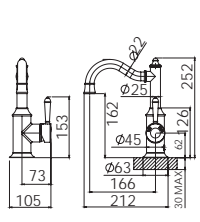
115-7610 / 115-7620



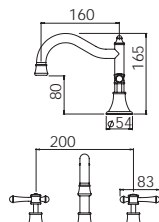
115-7450



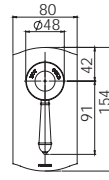
115-7490



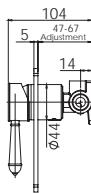
NS748



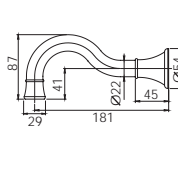
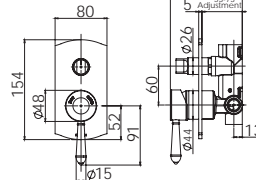
NS104L



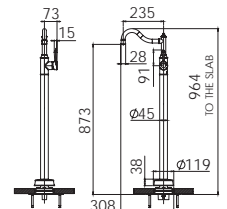
NS780



NS791

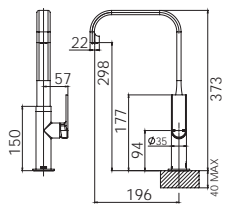


NS0900

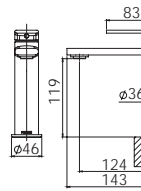


NS745

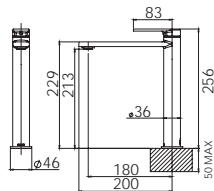
## TEEL



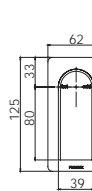
118-7300



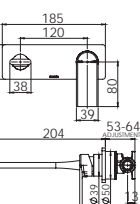
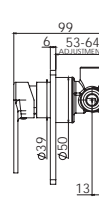
118-7700



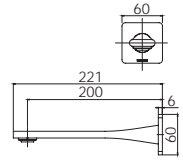
118-7900



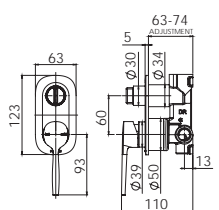
118-2805



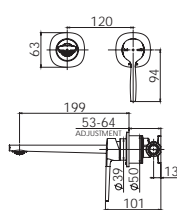
118-2812



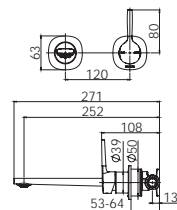
118-7610 / 118-7620



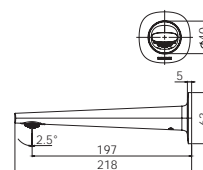
139-2940



139-2812

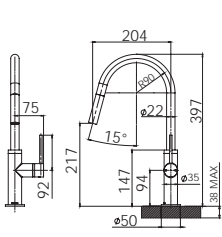


139-2814

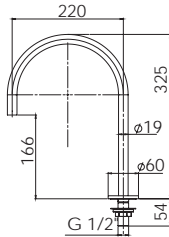


139-7610

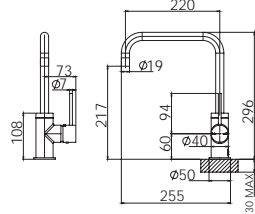
VIVID SLIMLINE



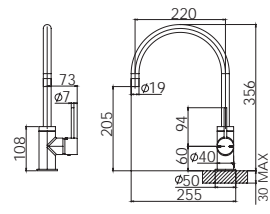
VS7105



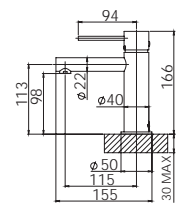
VS0720



VS731

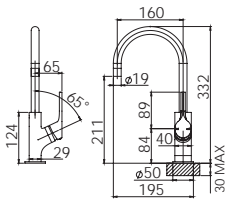


VS733

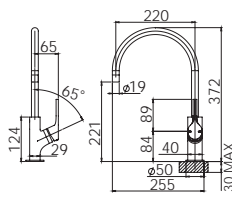


VS770

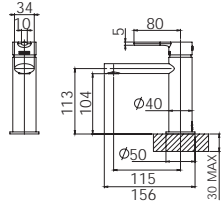
VIVID SLIMLINE OVAL



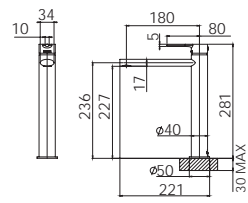
VV735



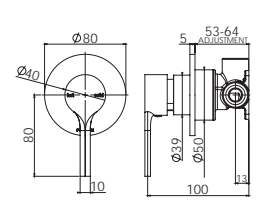
VV733



VV770

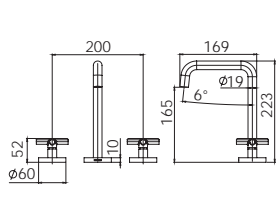


VV790

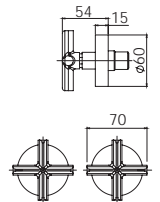


VV2805

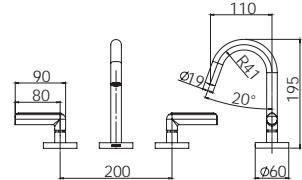
VIVID SLIMLINE PLUS



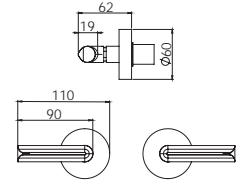
119-1000



119-0600 / 119-0670

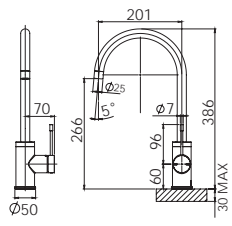


119-1030

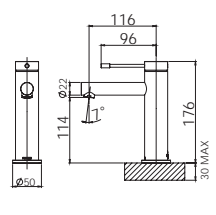


119-0601

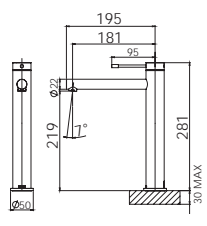
VIVID SLIMLINE SS



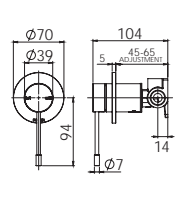
316-7300



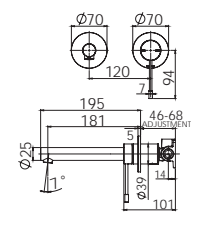
316-7700



316-7900



316-7800



316-7810



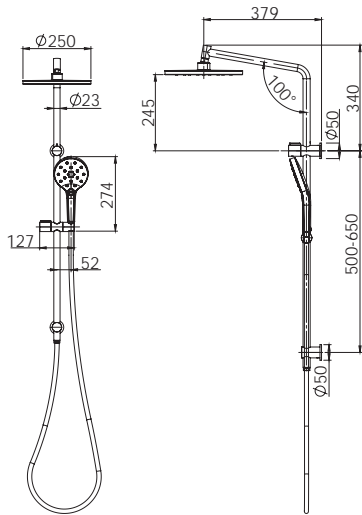


# Line Drawings

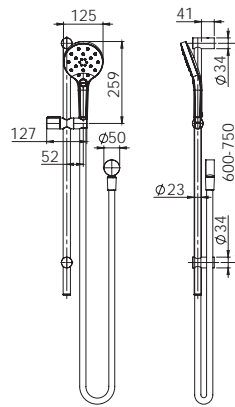
Can't find the line drawing you are looking for?  
Simply visit the Phoenix website to view the complete range of line drawings and other technical information

[phoenixtapware.com.au](http://phoenixtapware.com.au)

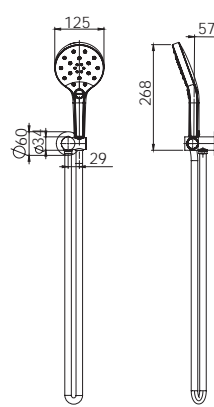
## ORMOND LUXEXP™ SHOWERS



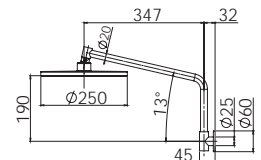
609-6530



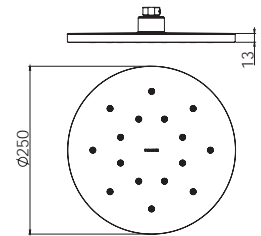
609-6830



609-6630

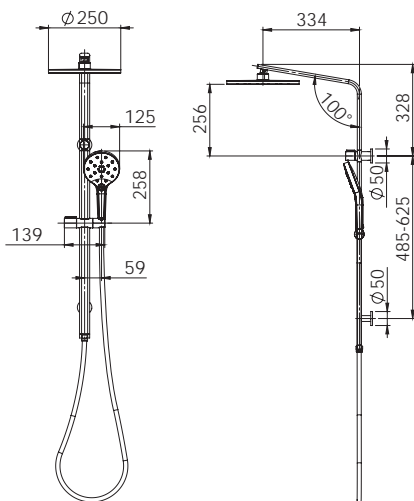


609-5300

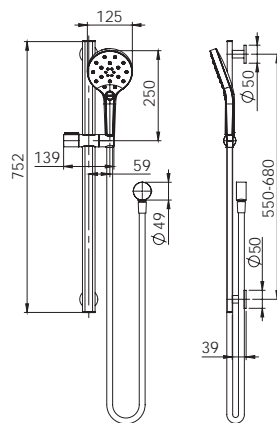


640-5000

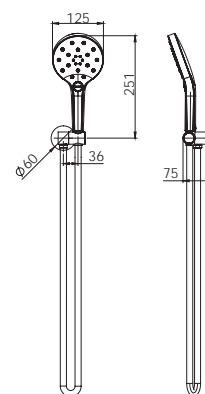
## OXLEY LUXEXP™ SHOWERS



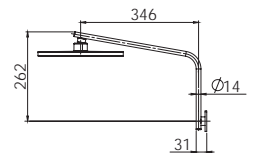
610-6530



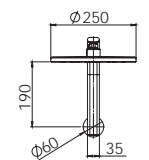
610-6830



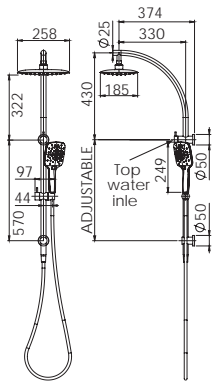
610-6630



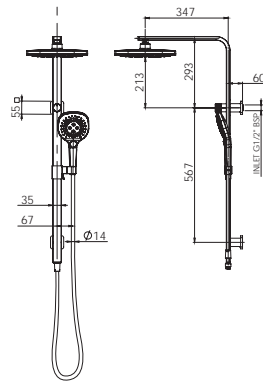
610-5300



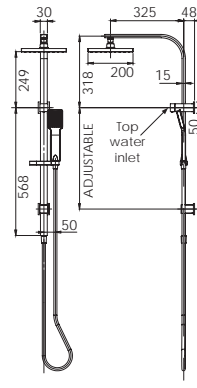
TWIN SHOWERS



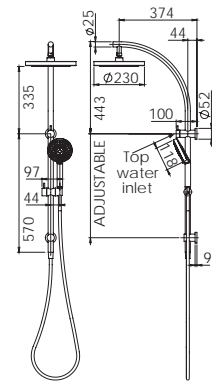
RU6530



129-6530

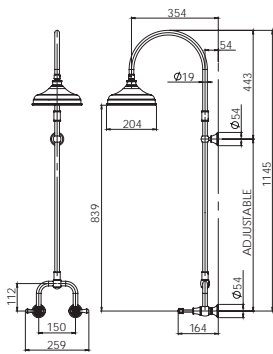


LE726

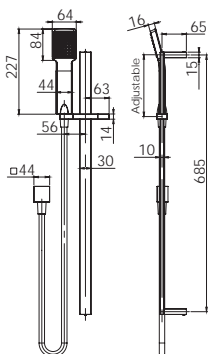


V726

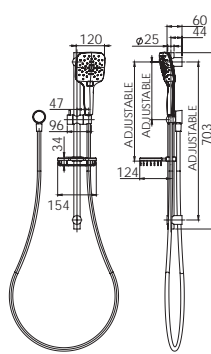
RAIL & HAND SHOWERS



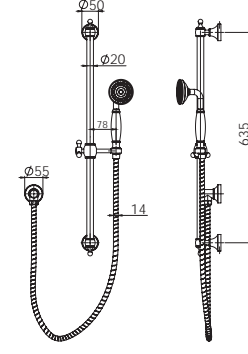
NS123L



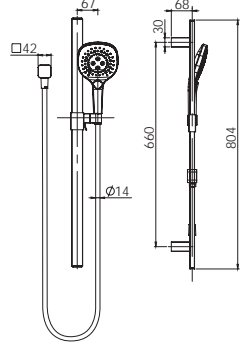
LE685



RU6810

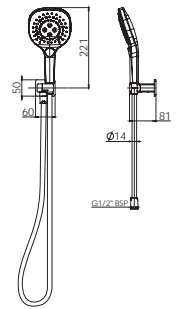


134-6810

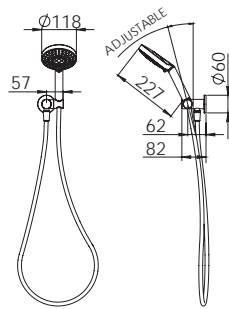


129-6830

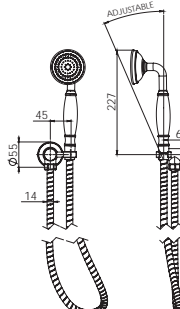
HAND SHOWERS



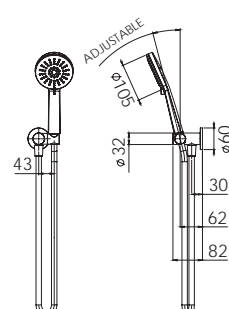
129-6630



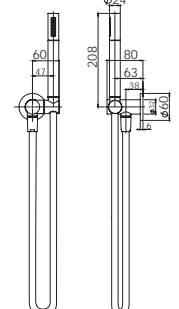
V683



134-6610

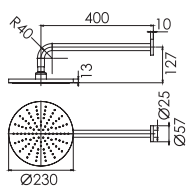


VS6630

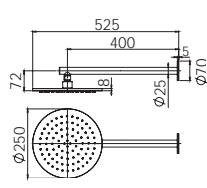


316-6710 / VS6710

SHOWER ARM & ROSE

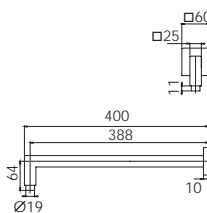


V5200

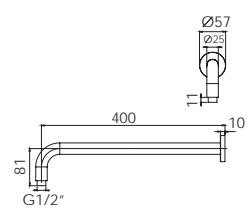


316-5200

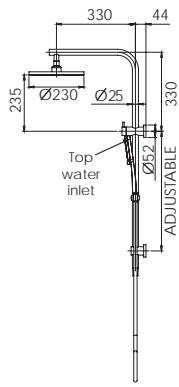
SHOWER ARMS



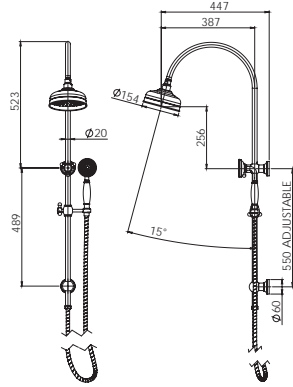
LE6000



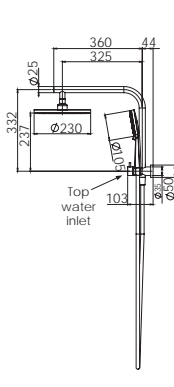
V6000



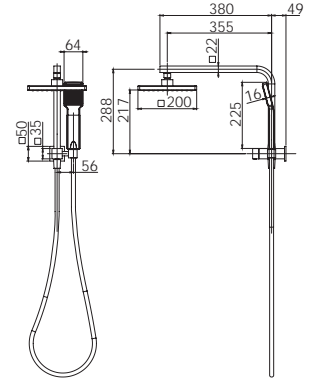
VS6500



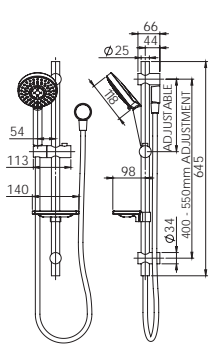
134-6510



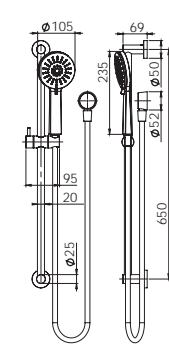
VS6510



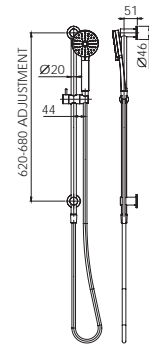
LE6510



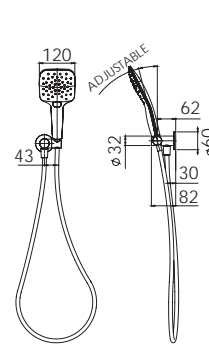
V685



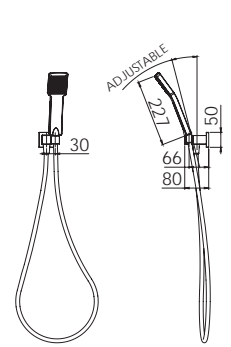
VS685



VS687

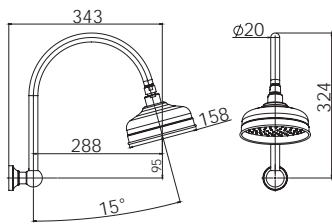


RU6610

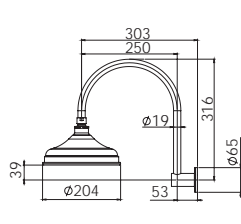


LE683

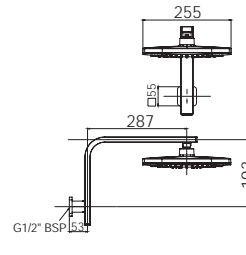
SHOWER ARM & ROSE



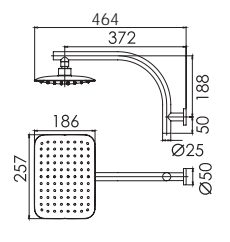
134-5300



NS125



129-5300



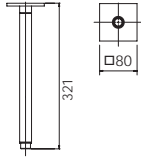
RU526

# Line Drawings

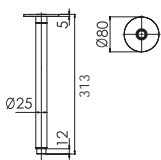
Can't find the line drawing you are looking for?  
Simply visit the Phoenix website to view the complete  
range of line drawings and other technical information

[phoenixtapware.com.au](http://phoenixtapware.com.au)

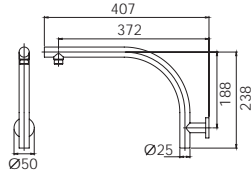
SHOWER ARMS cont.



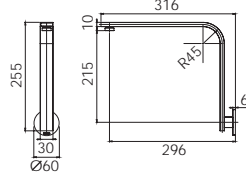
LE6091



V544

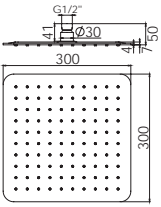


RU522

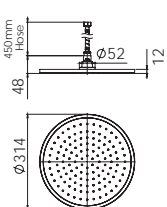


VS6000

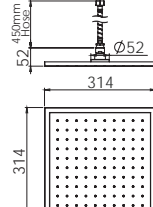
SHOWER ROSES



VS5001

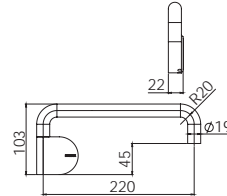


VS5090

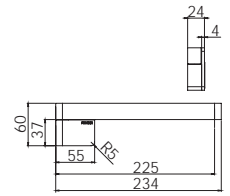


VS5091

OUTLETS

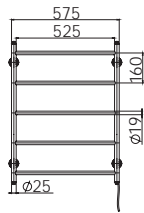


121-0880

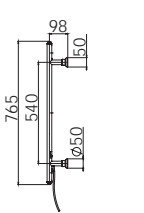


121-0881

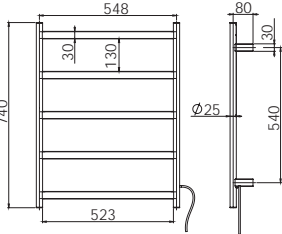
TOWEL LADDERS



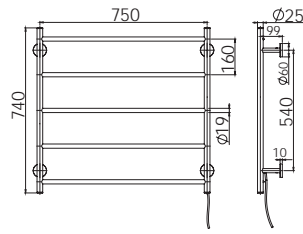
134-8750



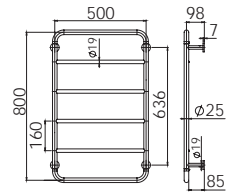
652-8750



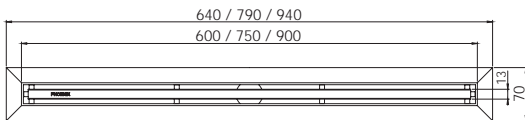
RA8751



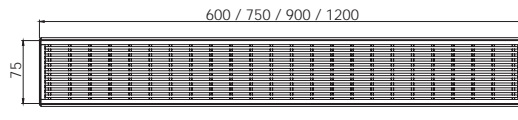
111-8700



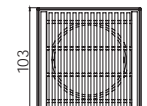
DRAINS



205-4413



200-2111



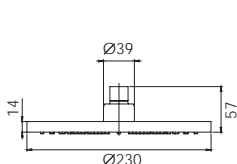
202-2204

# Line Drawings

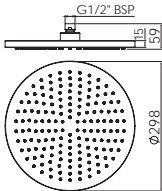
Can't find the line drawing you are looking for?  
Simply visit the Phoenix website to view the complete range of line drawings and other technical information

[phoenixtapware.com.au](http://phoenixtapware.com.au)

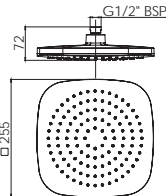
## SHOWER ROSES



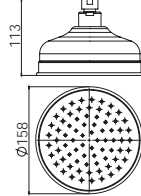
V527



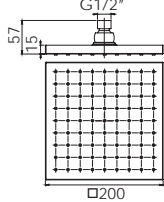
V5005



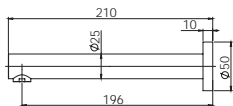
129-5000



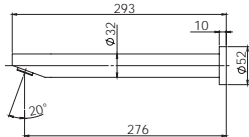
134-5000



LE5100

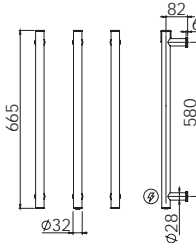


V776

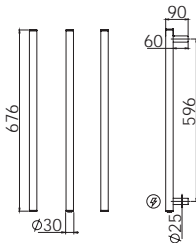


V817

## HEATED TOWEL RAILS

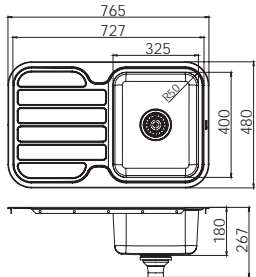


650-8762

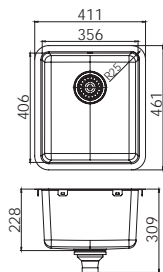


651-8762

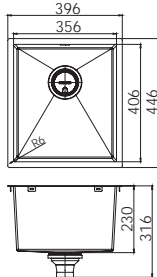
## SINKS



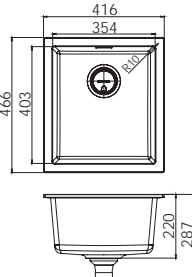
300-1301



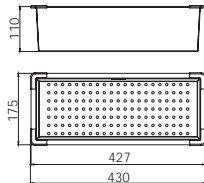
303-0002



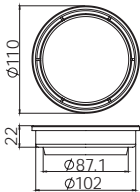
310-0002



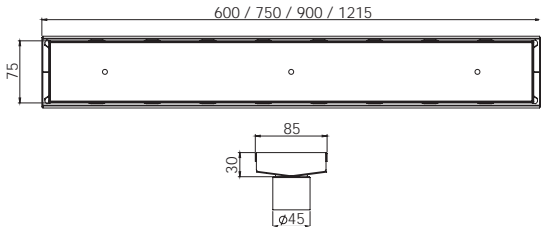
312-0002



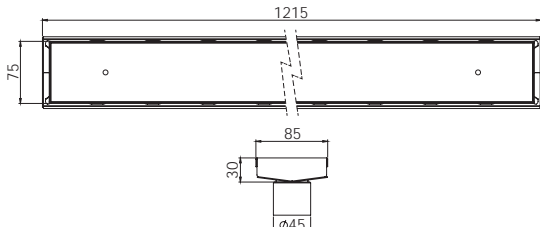
340-8560



204-4005



201-1111




203-1141

# SwitchMix<sup>®</sup>

## Refresh your bathroom look with ease!

SwitchMix<sup>®</sup> by Phoenix offers the ultimate flexibility when choosing bathroom fittings. SwitchMix<sup>®</sup> allows you to easily select a new design or finish in future without having to remove or damage tiles, as all the changes are made front-of-wall.

Compatible with many of our most popular collections in up to five finishes, the design options for SwitchMix<sup>®</sup> continues to grow, offering even more choice in the future. Look out for the  symbol throughout this catalogue.



Scan the code to browse all our SwitchMix<sup>®</sup> compatible ranges in five finishes!

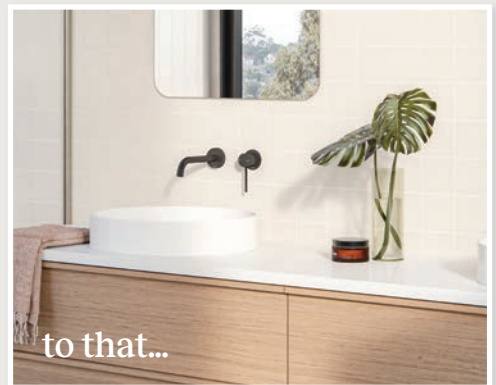


Current SwitchMix<sup>®</sup> collections: Mekko, Teel, Gloss MKII, Vask, Vivid Slimline, Lexi MKII, Cromford & Vivid Slimline Oval

 PHOENIX



Mekko  
Brushed Nickel



Vivid Slimline  
Matte Black



Cromford  
Brushed Gold





For further information and stockists,  
visit our website or email  
[sales@phoenixtapware.com.au](mailto:sales@phoenixtapware.com.au)

Head Office:  
926 Mountain Highway  
Bayswater VIC 3153 Australia  
Ph: +61 3 9780 4200

Please note:

While we aim to ensure the details in this Catalogue are correct at time of printing, Phoenix Tapware reserves the right to modify specifications shown or delete products from their range without prior notification.

Printed images are a representation only and the colour or finish may vary from the actual product.

Phoenix logo and the 'bird' mark are trademarks of Phoenix Industries Pty Ltd.



[phoenixtapware.com.au](http://phoenixtapware.com.au)

DM414

