

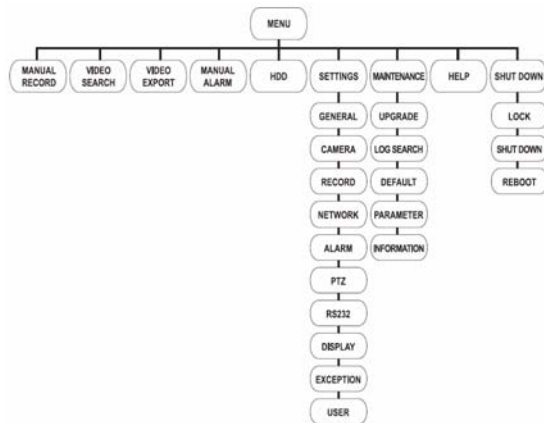
# Quick Start Guide

DS-7604 Series DVR (V1.0.3N)



## Menu Structure

The menu structure of the DS-7604 Series DVR is as followed:



## Startup and Shutdown

Proper startup and shutdown procedures are crucial to expanding the life of your DVR.

To start your DVR:

1. Ensure the power supply is plugged into an electrical outlet. It is **HIGHLY** recommended that an Uninterruptible Power Supply (UPS) is used in conjunction with the unit.
2. Press the POWER switch on the rear panel. After the power has been started up, the POWER indicator will light green.

To shutdown the DVR:

1. Enter the Shutdown menu by clicking on Menu > Shut down.



2. Select the Shutdown button.
3. Click the Yes button.

## Using the Setup Wizard

### Wizard

By default, the Setup Wizard will start once the DVR has loaded. The Setup Wizard will walk you through some of the more important settings of your DVR. If you do not wish to use the Setup Wizard at this time, click the Cancel button.

You may also choose to use the Setup Wizard at a later time by leaving the “**Start Wizard when DVR starts?**” checkbox checked.

To start using the Setup Wizard:



1. Click the Next button on the Wizard window.



2. Navigate to the **Admin Password** input field.

3. Enter the admin password into the **Admin Password** input field. By default, the password is 12345.



4. To change the admin password, check the **New Admin Password** checkbox.

5. Enter the new password and confirm the password in the given fields.

5. Click the Next button. This will take you to the **HDD Management** window.



12. To start HDD management, click the Enter button.
13. If a new HDD was recently installed,

select the HDD from the list to initialize it. Initializing the HDD will format and remove all data from it.

14. After the HDD has been initialized, click the OK button which will take you back to the Setup Wizard window.

15. Click the **Next** button. This will take you to the Record Settings Window.

16. To enter the **Record Settings** window, click the Enter button.



17. Select the **Schedule** tab.

18. Click the **Edit** button. This will open up a new recording schedule.

19. Check both the **Enable Schedule** and **All Day** checkbox. This will enable the recording schedule and have it record continuously all day.



20. Click the OK button.

This will take you back to the **Schedule** tab. To copy the schedule

to a different channel, select the channel or all under **Copy To** and click the Copy button.



21. Click the **Next** button.

This will take you to the **Network Settings** window.

22. To configure network settings, click the Enter button.



23. Enter the **IP Address**, **Subnet Mask** and **Default Gateway**.

24. Click the OK button to return to the Setup Wizard.

25. Click the Next button. This will take you to the **Camera Management** window.



26. Select Add to add IP camera, and click OK

to return to Setup Wizard.

27. If all the settings are entered as desired, click the Done button to finish and exit the Setup Wizard.

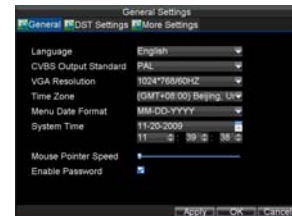
Congratulations! You've completed the Setup Wizard. The next step in the initial setup process is to setup the system date and time.

## Setting Date & Time

It is extremely important to setup the system date and time to accurately timestamp recordings and events.

To setup date and time:

1. Enter General Settings menu by clicking Menu > Setting > General.
2. Enter the correct date and time under **System Time**.



3. Click the Apply button to save the setting.

## Playback

### Playback from Search

To playback files from a general search:

1. Enter into the Video Search menu by clicking Menu > Video Search.
2. Select General tab, and Set the search parameters by selecting cameras to search, video/file type and the start/end time.



3. Click the Play button to start playback of all the files found with the specified search criteria or click the Search button to bring up the list of search



results. After search results are presented, select the file you would like to playback and press Play to enter synchronous playback cameras selection.

4. Recordings will automatically be played back in the

Playback interface.

## Playback from Live Preview

You may also instantly playback from a channel while watching a Live Preview. The playback will be of recordings from the past 5 minutes.

To playback from a channel instantly in Live Preview:

### • Using a Mouse:

1. Right-click the mouse on desired channel and select the Playback button.
2. Recordings from the selected channel will start playing back in the Playback interface. An *Attention* message will appear if there are no recordings found from the previous 5 minutes. You may also press the Play button to view the day's recording for the selected channel.
3. You may also select additional channels for playback from the channel list on the right hand side of the Playback interface.



### • Using the Front Panel/Remote:

1. Press the PLAY button. This will take you into the Playback interface.
2. Enter the channel you would like to watch recordings for on the front panel or remote (i.e. press 'SHIFT', the STATUS light will turn green, then press '1' for channel 1, press '2' for channel 2).
3. Recordings will begin for the selected channel.

## Playback from System Log

You may also playback recordings from the System Log.

To playback video from the System Log:

1. Enter the Log Search menu by clicking Menu > Maintenance > Log Search.
2. Set **Major Type** setting to *Information*.
3. Set **Minor Type** setting to *Start Record* or *End Record*.



### 4. Set **Start Time** and **End Time**.

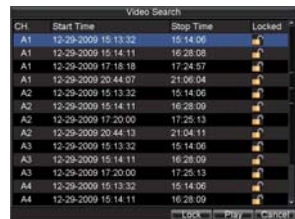
5. Click the Search button.
6. A list of results with your search criteria will be displayed. Select the video log to playback and click Play.
7. The recording will begin to play in the Playback interface.

## Backup

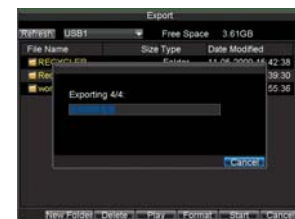
Recorded files can be backed up to various devices, such as USB flash drives, USB HDDs or a DVD writer.

To export recorded files:

1. Enter the Export Video menu by clicking Menu > Video Export.
2. Select desired parameters to search for files to export.
3. Press the Export button. This will take you to the Video Search menu.
4. Select the files to export. You may also click the Play button to verify that these files are indeed the ones you would like to export.
5. The size of the currently selected files is displayed in the lower-left corner of the window. Select the Next button to enter the Export menu.
6. Select device to export to from drop-down list (USB Flash Drive, USB HDD, and DVD Writer). If backup device is not recognized:



6. Select device to export to from drop-down list (USB Flash Drive, USB HDD, and DVD Writer). If backup device is not recognized:
  - Click the Refresh button.
  - Reconnect device.
  - Check for compatibility from vendor.



- Click Start to begin backup process.
- After the backup process has completed, you may select the files from your device and click the Play button to verify that it has been exported successfully.

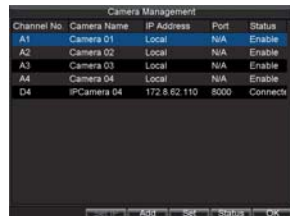
**Note:** Video Player software will automatically be copied on to the device that the recorded files were exported on.

## Configuring IP Cameras

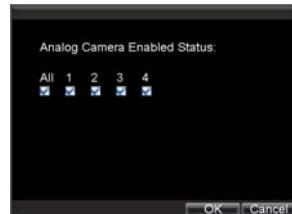
To configure IP cameras: (Take DS-7604HI-S as an example.)

- Enter the Camera Management menu by clicking Menu > Setting > Camera.

- Determine number of analog channels to disable. When you want to connect more than 2 IP cameras at 4CIF resolution or 1 IP



- camera at HD720p resolution with the DS-7604HI-S unit, then it needs to adjust the number of analog cameras connected. 1 IP cameras at 4CIF resolution can be added by disabling 2 analog cameras, and 1 IP cameras at HD720p resolution can be added by disabling 4 analog cameras. Up to 4 IP cameras at 4CIF resolution or 2 IP cameras at HD720p resolution can be connected to the DS-7604HI-S unit.



- To disable analog channels, click the Status button to enter the Camera Enabled Status menu. Uncheck checkboxes to disable corresponding channels. Click OK to save setting. A confirmation message will appear on the screen asking you to reboot the DVR. Click Yes to reboot. After the system has rebooted, enter back into the Camera Management menu and continue with the following steps.



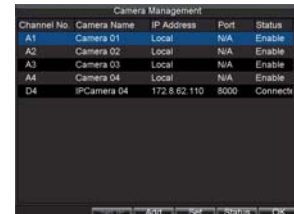
- Select the Add button to enter IP Channel Settings menu.

- Select the IP device from the list. The devices found in the list are those supported by SADP and found by the DVR. If no device was found, you may manually enter the camera parameters in the fields below.

- Enter IP camera parameters. This includes the IP address, ports, user name and password of the IP camera.

- Select OK to save and return to the Camera Management menu.

- If IP camera was added successfully, the Status for that camera would show that it is *Connected*.



- If it does not, click the Set button to verify that the parameters were entered correctly. You may also delete an added channel by clicking the Delete button.

- Click OK to exit out of the Camera Management menu.

To adjust IP camera compression settings:

- Enter the Record Settings menu by clicking Menu > Setting > Record.



- Select the **General** tab.

- Select the IP camera to configure next to the **Camera** label.

- Adjust IP camera compression settings. If the IP camera was added successfully, the DVR will show OSD, channel name and the compression parameters in accordance to the IP camera's current settings.

- Select the **Sub Stream** next to the **Encoding Parameters** to set sub stream parameters. Sub stream is only used for previewing.

- Click OK to save and exit out of menu.

**Note:** The quality of resolution, frame rate and bit rate depends on the performance of the IP camera.

## Using the Front Panel Controls



The controls on the front panel include:

1. **USB Interface:** Connects USB mouse or USE flash memory devices
2. **Compound Buttons:**
  - **1Main Menu:** (1) Enter numeral “1”; (2) Access the main menu interface
  - **2ABC/F1:** (1) Enter numeral “2”; (2) Enter letters “ABC”; (3) The F1 button when used in a list field will select all items on the list. In PTZ Control mode, it will turn on/off PTZ light.
  - **3DEF/F2:** (1) Enter numeral “3”; (2) Enter letters “DEF”; (3) The F2 button is used to cycle through tab pages. It will also bring up the Channel & OSD Position settings.
  - **4GHI/ESC:** (1) Enter numeral “4”; (2) Enter letters “GHI”; (3) Exit and back to the previous menu
  - **5JKL/EDIT:** (1) Enter numeral “5”; (2) Enter letters “JKL”; (3) Delete characters before cursor; (4)Select the checkbox and ON/OFF switch; (5) Start/stop record clipping in playback
  - **6MNO/PLAY:** (1) Enter numeral “6”; (2) Enter letters “MNO”; (3) Playback, for direct access to playback interface
  - **7PQRS/REC:** (1) Enter numeral “7”; (2) Enter letters “PQRS”; (3) Manual record, for direct access to manual record interface; manually enable/disable record
  - **8TQV/PTZ:** (1) Enter numeral “8”; (2) Enter letters “TQV”; (3) Access PTZ control interface
  - **9WXYZ/PREV:** (1) Enter numeral “9”; (2) Enter letters “WXYZ”; (3) Multi-camera display in preview
  - **0/A:** (1) Enter numeral “0”; (2) switch between input methods (upper and lowercase alphabet, symbols and numeric input)
3. **SHIFT:** Switch of compound keys between the numeric/letter input and functional control.
4. **Control Buttons:**
  - **Directional buttons:** In menu mode, the *direction* buttons are used to navigate between different fields and items and select setting parameters. In playback mode, the *Up* and *Down* buttons are used to speed up and slow down record play, and the *Left* and *Right* buttons are used to select the recording 30s forwards or backwards. In preview mode, these buttons can be used to cycle through channels.
  - **Enter:** The *Enter* button is used to confirm selection in menu mode; or used to select checkbox fields and ON/OFF switch. In playback mode, it can be used to play or pause the video. In single-frame play mode, pressing the *Enter* button will advance the video by a single frame. And in auto sequence



---

preview mode, the buttons can be used to pause/ resume auto sequence.

**5. Status Indicators:**

- **POWER:** the POWER indicator turns green when DVR is powered up.
- **STATUS:** the indicator lights when the compound key switches to numeric/letter input mode.
- **Tx/Rx:** TX/RX indicator flickers blue when network connection is functioning normally.

**6. IR Receiver:** operation by IR remote control.

**Note:** It is important to note that you must click the EDIT button on either the remote or front panel on a text field before you're able to edit its content. After you're done entering text, you must hit the ENTER button to be able to move on to the next field.