

LYNX



An **X**treme design



for **X**treme conditions

for **X**treme conditions



a beast is born

The Lynx thrives in places where many fear to tread. It's quiet strength, accurate dexterity, small super efficient frame, and lethal claws make it the perfect machine for the unique challenges of remote and difficult environments.

It is with a great sense of satisfaction that we unveil these two Lynx flagship models. The LX-850 and the LX-1200 are both very robust little machines featuring different strengths. The LX-850 is our smallest model, so it can easily navigate in tight spaces, but it is also designed with a versatile drive system. In a matter of 15 minutes, the tracks can be replaced with tires making it a perfect fit for multiple types of surfaces. Although it is larger than the LX-850, the LX-1200 also does its work inside a small footprint. However the LX-1200 boasts greater strength and offers more stability making it a better choice for larger projects.

Both of these models can be quite useful in commercial projects. However, they have also been designed with the good of the home owner in mind as well. With a strict focus on the main points that make the mini skid loader a great machine, we have been able to create a piece of equipment that is not only powerful, durable, and effective, but is also affordable.

Convert hundreds of mundane manual labor projects into tasks that have been comfortably completed from the control station of your Lynx Mini Skid steer. From chopping firewood, to spreading gravel, to mulching your garden, the Lynx is the bundle of work power that you have been looking for.

Due to the common industry interface design of the Lynx and it's dual auxiliary outlets, a vast variety of tools can be utilized. While our machines come standard with a half cubic yard bucket, brush hogs, auger bits, grapples, and many other CII attachments can be added to your collection of tools.

“presenting an extreme design for extreme conditions”



INDEX

- 4.** Easy Operation
- 6.** Ultra Compact
- 8.** 360° Visibility
- 10.** Max Capacity
- 12.** Float Mode
- 14.** Common Industry Interface
- 16.** Powerful Engines
- 18.** Innovative Track Design
- 22.** LX-1200 Specs
- 24.** LX-850 Specs

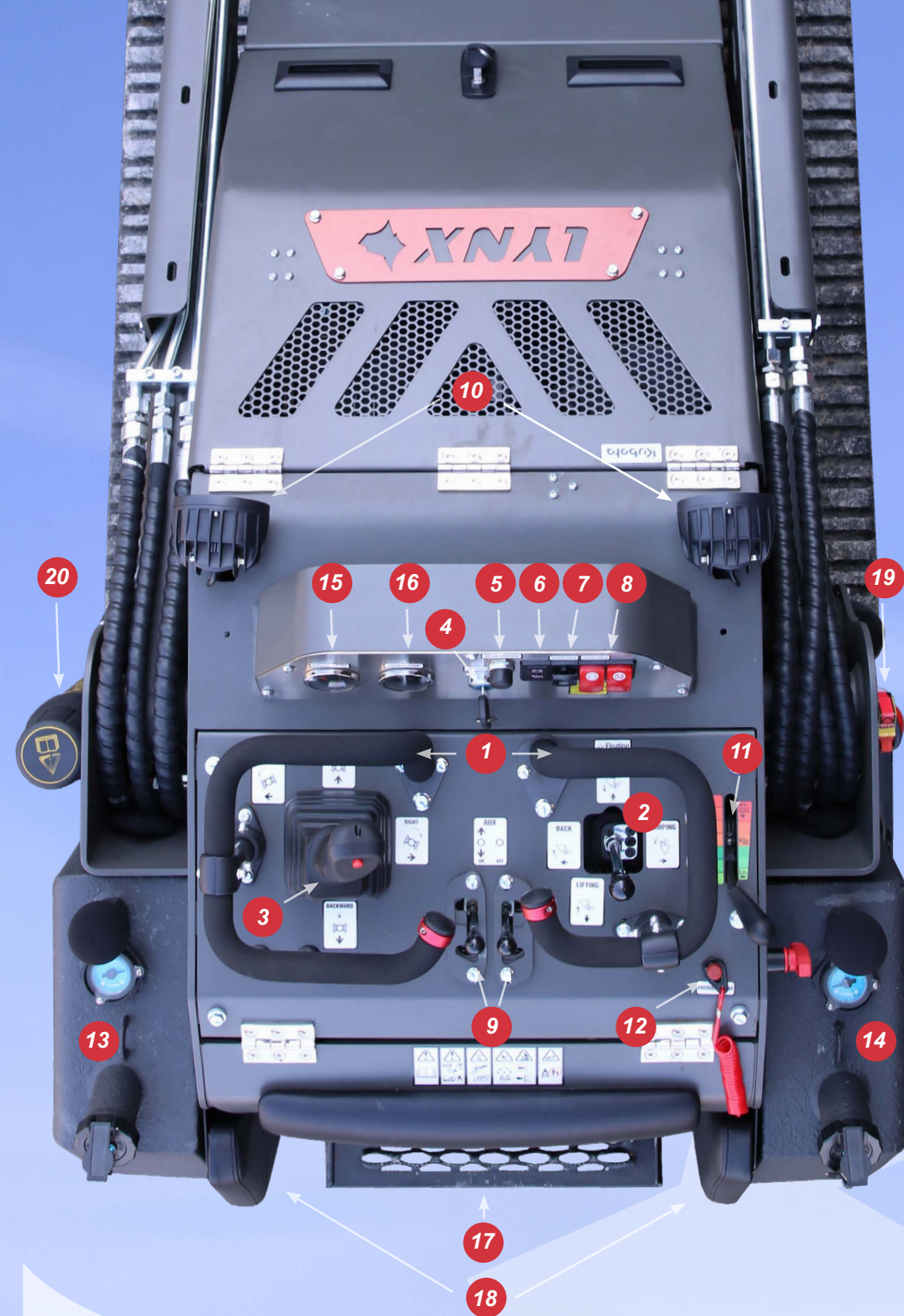




**EASY
OPERATION**



Prowl like a Lynx...



- 1 • Padded Hand Rests
- 2 • Bucket Controls
- 3 • Drive Controls
- 4 • Ignition
- 5 • Horn
- 6 • Oil & Battery Light
- 7 • Headlights
- 8 • Auto Hold Buttons
- 9 • Auxiliary Controls
- 10 • LED Headlights
- 11 • Engine Throttle
- 12 • Emergency Shutoff
- 13 • Hydraulic Oil Tank
- 14 • Fuel Tank
- 15 • Water Temp Gauge
- 16 • Hour Meter
- 17 • Shock Absorbing Standing Platform
- 18 • Leg Pads
- 19 • Fire Extinguisher
- 20 • Owner's Manual



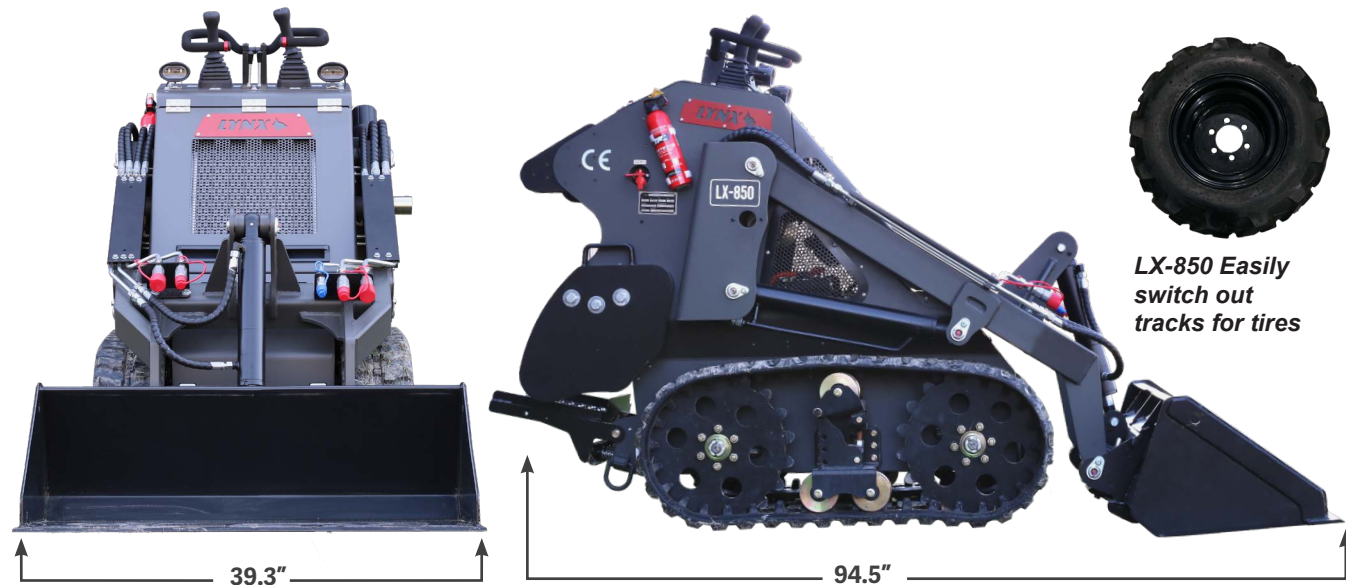
The smart hydraulic joystick and well designed axillary controls allow for smooth, intuitive operation. Lynx becomes an auxiliary extension of your own body as you team up on backyard chores or professional projects. Prowl like a Lynx as you cut your brush, scoop your mulch or, grapple your firewood all from one easy control panel.



**ULTRA
COMPACT**



LX-850



The small footprint of both the LX-1200, but especially the LX-850 Lynx makes them the ideal machines for what would normally be backbreaking labor in tight spaces. Forget the wheel borrow and pitchfork and easily clean out those horse stalls with a Lynx. The LX-850's track to tire feature allows it to adapt well to different environments depending on the need. The LX-1200 and LX-850 offer the maximum punch for the minimum footprint.



360°
VISIBILITY

Think outside the box!



LX-850

- Sturdy, padded hand controls for steady work
- Minimal obstructions for a 360° view in any direction
- Comfortable padding to protect the driver's legs while in operation.
- Heavy duty shock absorbing operator stand for a gentle ride over bumpy terrain



LX-1200



The 360° view afforded by the Lynx's intuitively designed operator platform takes safety and maneuverability to a whole new level. Be even more in tune with your surroundings on every project by bringing yourself closer to it. Confidently make every move count by seeing everything.



360°





MAX
CAPACITY

**LIFT OVER A
TON**



Don't underestimate the strength of this powerful little beast. Although it is small, the Lynx boasts over a ton of lifting capacity. Flex those muscles and move in for the attack like a sturdy little Lynx. Drag or skid your brush and logs, push and spread your mulch or stones, lift and dump a loaded bucket into the back of your truck or dump trailer. You will be amazed at how well this little beast will muscle through the work and get the project done.



**FLOAT
MODE**

Graceful as a
Lynx

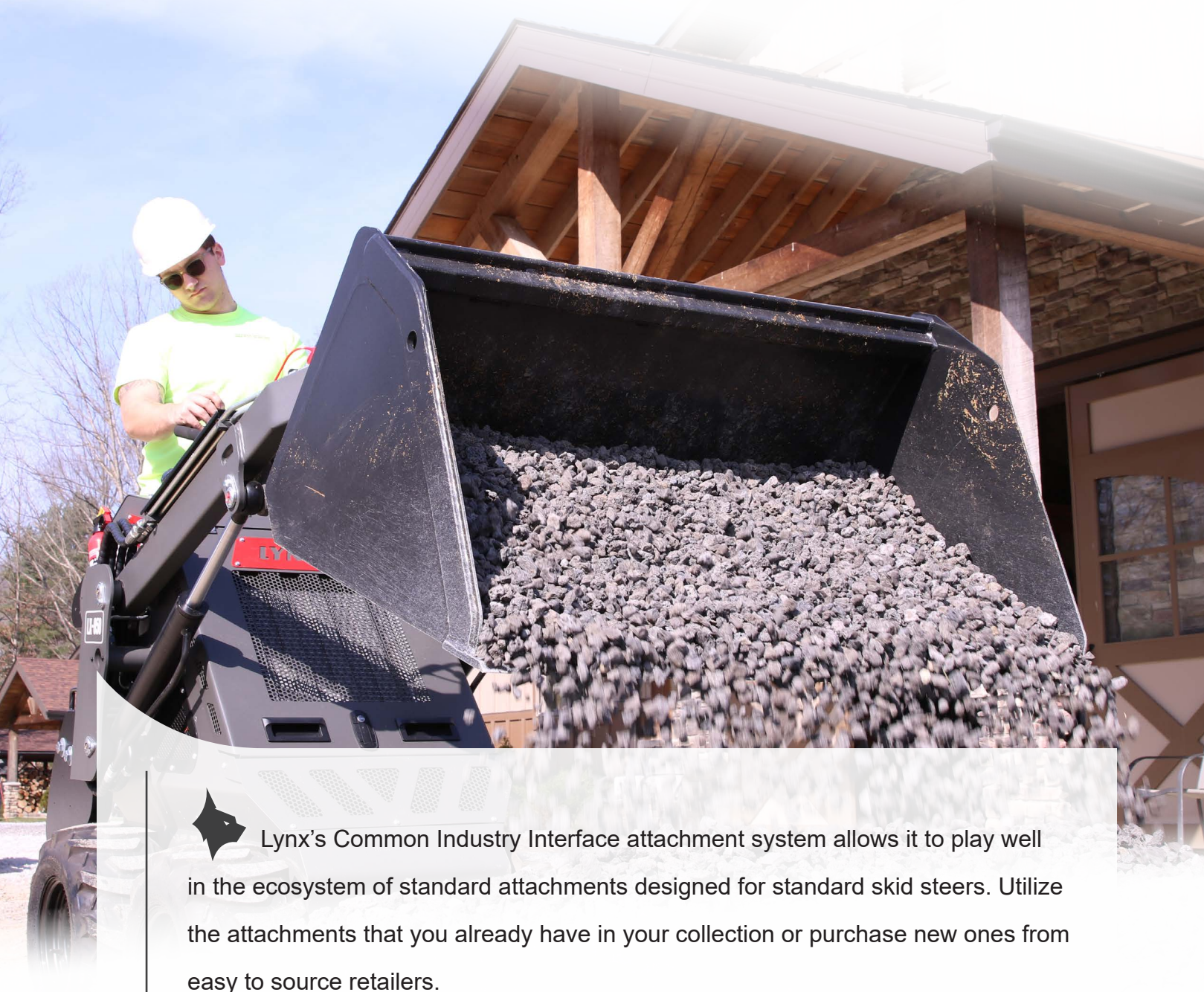


Float mode enables your Lynx's bucket or attachment to easily ride over uneven ground as you grade a pad or mow the weeds in your pasture. Easily switch from float mode into manual control mode with the push of a button to quickly complete grade sensitive projects on many different applications.



CII
ATTACHMENTS

Common Industry Interface



Lynx's Common Industry Interface attachment system allows it to play well in the ecosystem of standard attachments designed for standard skid steers. Utilize the attachments that you already have in your collection or purchase new ones from easy to source retailers.



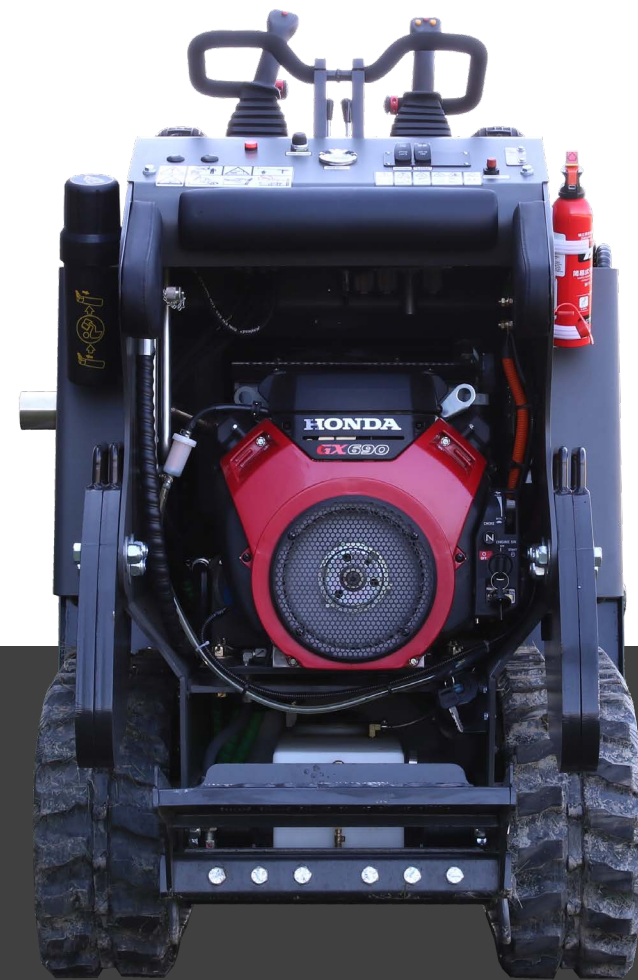
Easily connect to auxiliary hydraulics






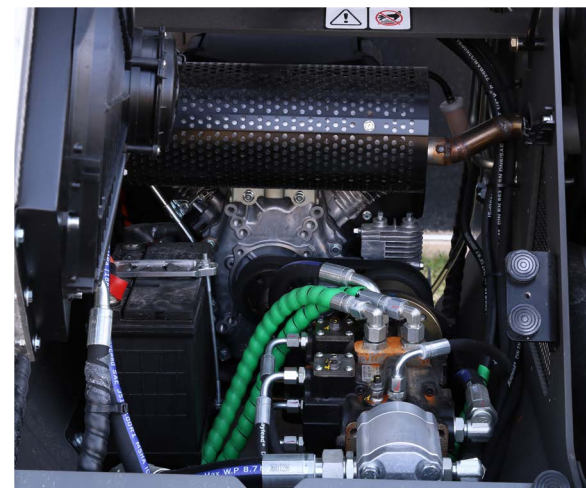
**POWERFUL
ENGINES**


MAKE A POWERFUL CHOICE!

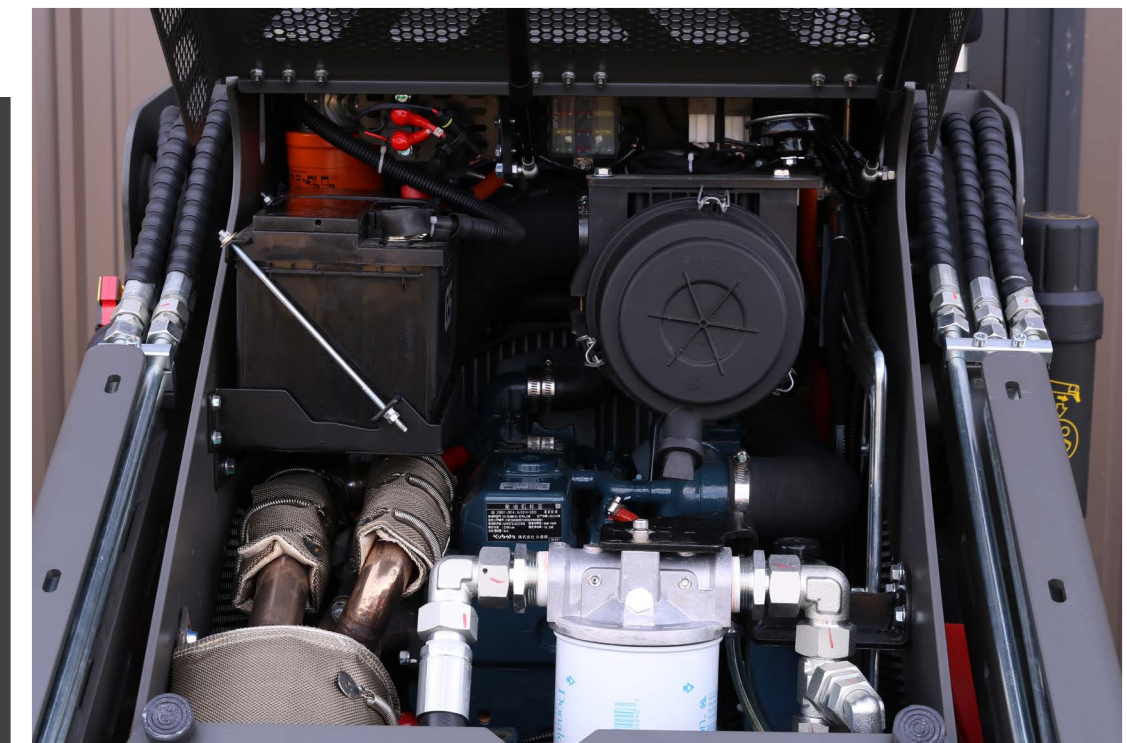


LX-850

 The LX-850 is powered by a Dual Cylinder (90° V type) 4 stroke forced air cooling. HONDA GX690. This quality gas engine runs between 1100 and 2500 rpm and pushes out a solid 25 horse power.



 The LX-1200 is powered by a D-1703 3 cylinder, EPA Tier 4, Kubota DIESEL engine that runs between 1100 and 2200 rpm and also pushes out a brawny 25 horsepower.



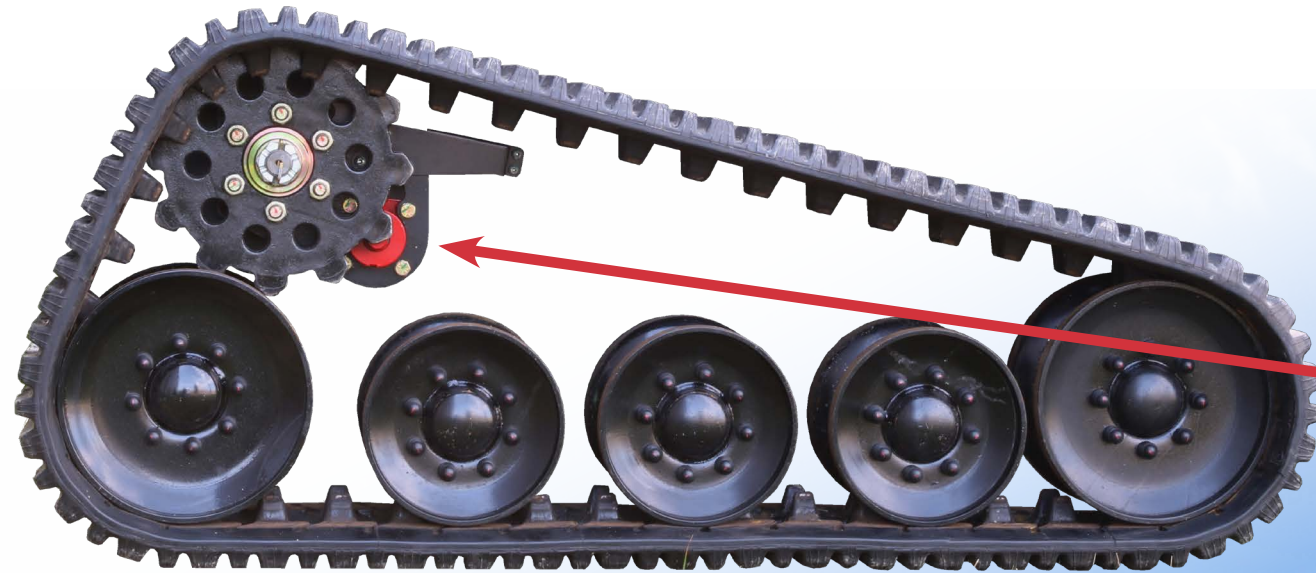
LX-1200



INNOVATIVE TRACK DESIGN

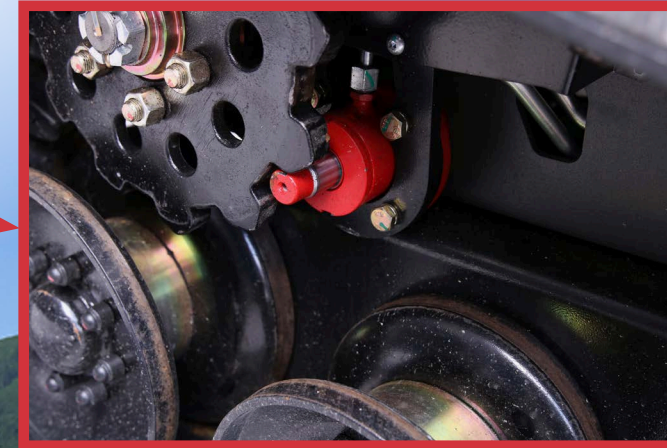


The LX-1200 and the LX-850 both have unique features about their track designs that are worth considering. The LX-1200's track is designed for maximum stability and safety featuring five idlers wheels, a state of the art tensioning system, and a track lockout parking break. The LX-850's track prioritizes a small footprint and flexibility with its interchangeable track to tire conversion kit.



9" Width

LX-1200



Track lockout for safety!



Switches out tracks
for tires in just minutes!



7.5" Width

LX-850



An effective plan of.....

ATTACK!
makes all the difference.





LX-1200

ENGINE

Engine Type	Kubota DIESEL
Model Name	D-1703 Engine with 3 cylinder, EPA Tier 4
Total Displacement	100.5 CU. IN.
Engine Power	25 HP
Rated Speed	2200 RPM
Low Idling Speed	1100 RPM

PERFORMANCE

Attachment Mounting System	CII (Common industry interface) or 2 Lever Quick Attach
Travel Speed (Fwd/Rev)	4.94 MPH
Ground Pressure (with Operator)	4.7 PSI
Battery Capacity	12V, 60 AH
Auxiliary Hydraulic Flow	12 GAL/MIN
Auxiliary Hydraulic Pressure	2610 PSI

SERVICE AND FILL CAPACITIES

Fuel Tank Capacity	9.25 gal
Hydraulic System	9.25 gal

OPERATION

Driving Movement	Left hand dual axis hydraulic joystick.
Boom and Bucket	Right hand dual axis manual controls.
Attachment Control	Middle dual auxiliary controls.



DIMENSIONS

Overall Length (w/o Bucket)	76"
Overall Height	59"
Overall Width (w/o Bucket)	42"
Operating Weight (w/o Bucket)	3035 LBS
Rated Operating Capacity	1000 LBS
Tipping Load	2857 LBS
Wheelbase	42.9"
Hinge Pin Height	83"
Reach at Max Lift and 39° Dump	23.2"
Track Width	9"
Ground Clearance	14.9"
Angle of Departure	30°





LX-850

ENGINE

Engine Type	HONDA GX690
Model Name	Dual Cylinder (90° V type) 4 stroke forced air cooling.
Total Displacement	42.09 CU. IN.
Engine Power	25 HP
Rated Speed	3600 RPM
Low Idling Speed	2500 RPM

PERFORMANCE

Attachment Mounting System	CII (Common industry interface) or 2 Lever Quick Attach
Travel Speed (Fwd/Rev)	5.2 MPH
Ground Pressure (with Operator)	5.5 PSI
Battery Capacity	12V, 48 AH
Auxiliary Hydraulic Flow	11.3 GAL/MIN
Auxiliary Hydraulic Pressure	2610 PSI

OPERATION

Driving Movement	Left hand dual axis hydraulic joystick.
Boom and Bucket	Right hand dual axis manual controls.
Attachment Control	Middle dual auxiliary controls.

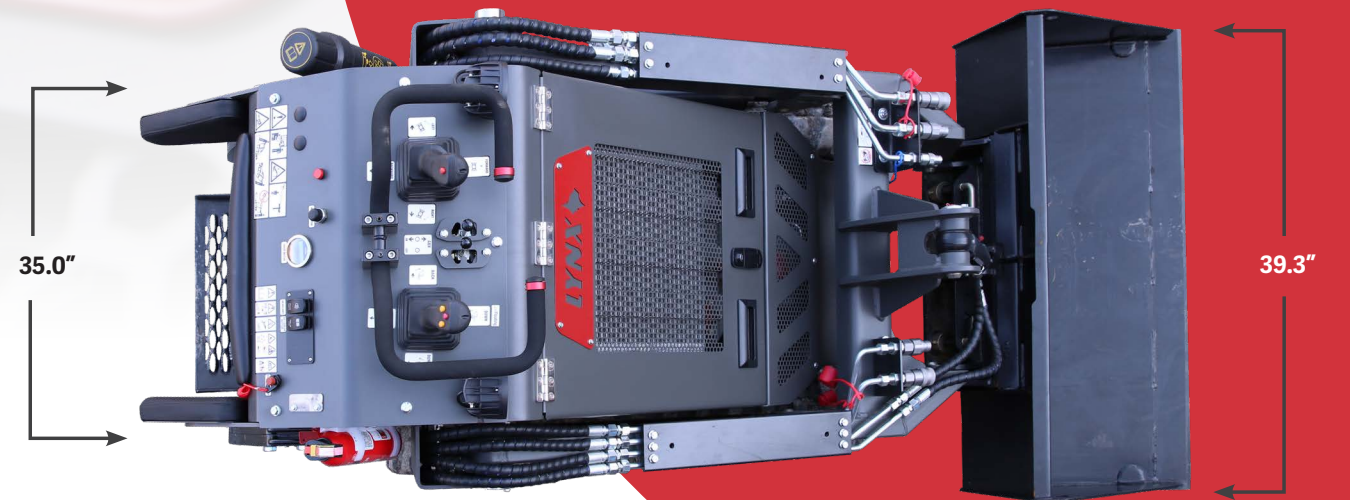
SERVICE AND FILL CAPACITIES

Fuel Tank Capacity	4.23 gal
Hydraulic System	5.82 gal



DIMENSIONS

Overall Length-Transport (W/STD Bucket Parallel to Ground)	94.5"
Overall Length (w/o Bucket)	67"
Overall Height	60.2"
Overall Width W/STD Bucket (S/T)	S: 39.3" T: 35.0"
Overall Width (w/o Bucket)	35"
Operating Weight (w/o Operator)	2426 LBS
Rated Operating Capacity	883 LBS
Tipping Load	2400 LBS
Wheelbase	28.5"
Hinge Pin Height	73.4"
Track Width	7.8"
Ground Clearance	S: 6.7" T: 5.5"
Angle of Departure	15°



Do the
IMPOSSIBLE!

LYNX





extreme design for extreme conditions



Phone: 440-361-5138

Email: sales@lynxequipment.net

Address: 14632 Old State Road.
Middlefield, OH 44062