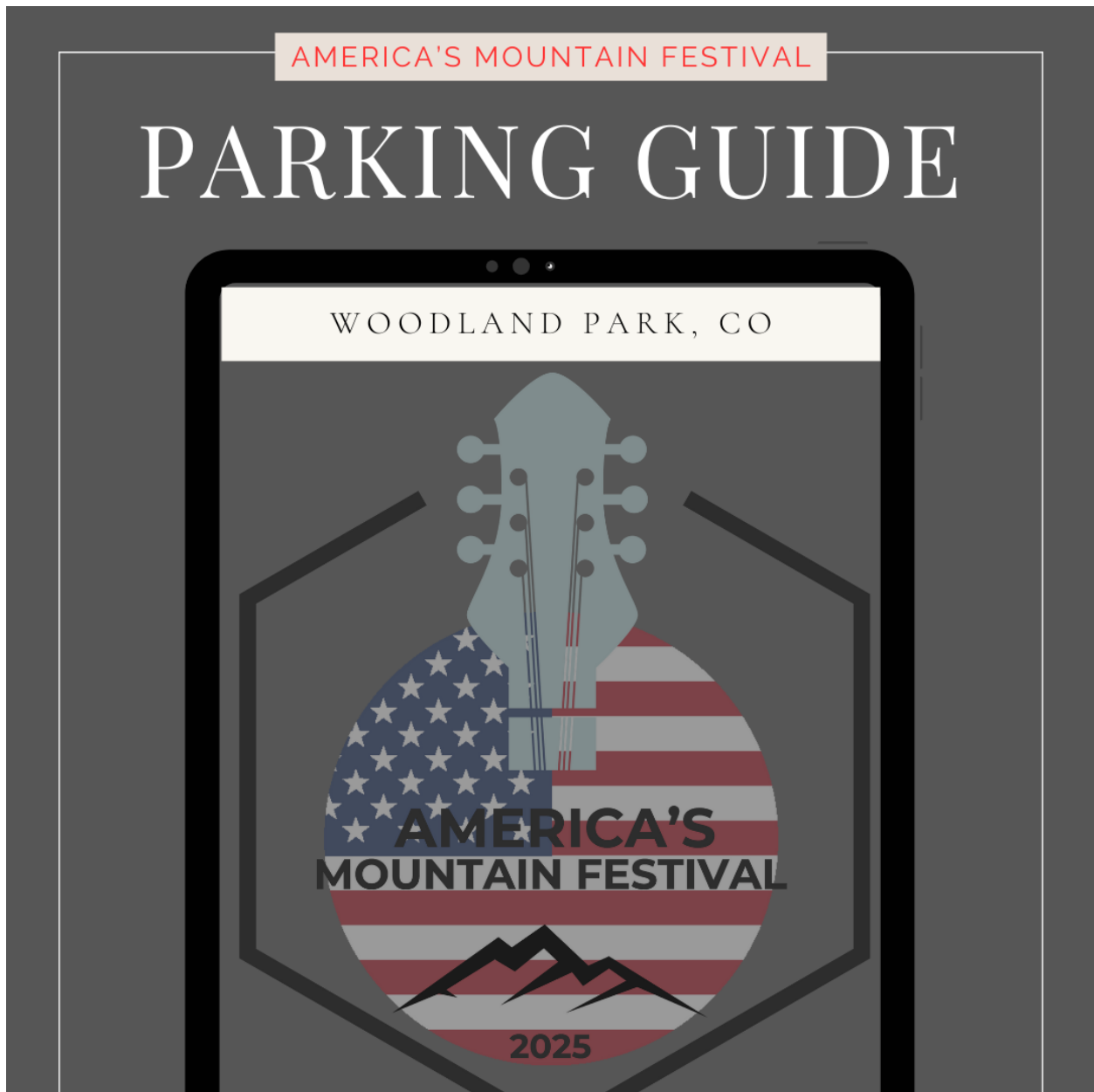


AMF PARKING INFORMATION



UTE PASS SADDLE CLUB



OFF HIGHWAY 24, TURN LEFT AT TRULL ROAD (WESTBOUND), TURN
RIGHT (EASTBOUND)

FREE SHUTTLE SERVICE FROM PARKING LOT TO VENUE.
STARTING AT 10AM (VENUE OPENS TO GA AT NOON)



SHUTTLE INFO

**WE WILL BE OFFERING FREE SHUTTLE SERVICE
FROM THE UTE PASS SADDLE CLUB TO/FROM
VECTRA BANK, WHICH IS DROP OFF/PICK UP
LOCATION FOR THE FESTIVAL.**

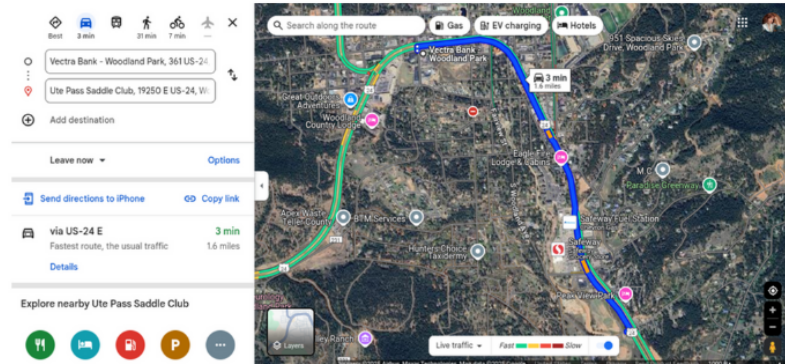
**We will have four (4) shuttles running every 10 minutes
or as needed. It's a 10-15 minute ride from Ute Pass
Saddle Club to Vectra Bank and vice versa. This is also
traffic dependent.**

**Shuttles will begin at 10am
Last shuttle leaves venue at 9:50pm**

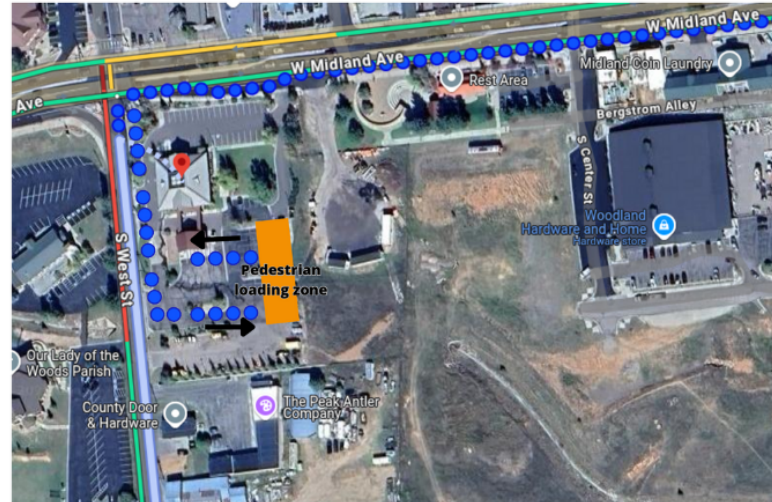
**After 9:50pm, patrons will need to access alternative
options to get back to Ute Pass Saddle Club**



Bus route from Ute Pass Saddle club to Vectra Bank



Pedestrian drop off location at Vectra Bank



DROP OFF FROM UTE PASS SADDLE CLUB ARRIVES AT VECTRA BANK.
PICKUP FROM VECTRA BANK FOR RETURN TRIP TO UTE PASS SADDLE CLUB

ADDITIONAL INFO

VIP PARKING - S. PARK STREET

AVAILABLE ON A FIRST-COME, FIRST-SERVE BASIS AT THE VENUE. VIP PATRONS ARE ASKED TO CARPOOL IF POSSIBLE. HANDFUL OF ADA SPOTS FOR VIP'S WILL BE AVAILABLE IN THIS LOT

ADA PARKING - VECTRA BANK

VERY LIMITED, FIRST-COME, FIRST SERVE
PLEASE FOLLOW ATTENDANTS INSTRUCTIONS AS WE
CANNOT BLOCK ATM ACCESS

ARTIST PARKING - S. PARK STREET

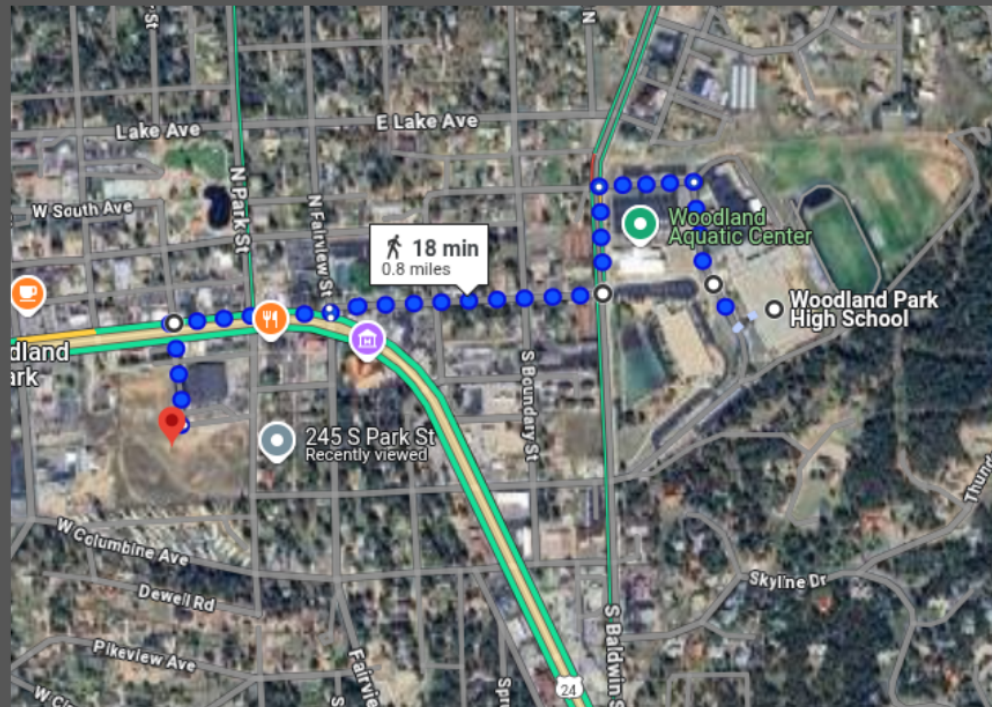
OFF LIMITS TO ALL OTHER PATRONS

OFF-STREET PARKING

ALSO FIRST-COME, FIRST-SERVE AROUND THE
VENUE/AREA. PLEASE BE RESPECTFUL OF ALL DRIVEWAYS,
MAILBOXES AND FIRE HYDRANTS



WOODLAND PARK HIGH SCHOOL



PARKING AVAILABLE AT THE HIGH SCHOOL WALKABLE TO THE
VENUE.

SEE BLUE PATH

