



**Premier**<sup>®</sup>  
SWIMMING POOL PRODUCTS

2024 Vinyl Liner Pools

# NPT<sup>®</sup> Premier Vinyl Liners

*Latham*



Full Print Reef Liner

## Latham Vinyl Liners

The vinyl liner you select will play a huge role in what your pool looks like. What color will the water be when you look through it? How will the sunshine look dancing along the surface in the early morning—or at dusk? The wide variety of vinyl liner options offered by Latham will ensure your pool looks the way you want it to, and matches your vision of what a pool can be.

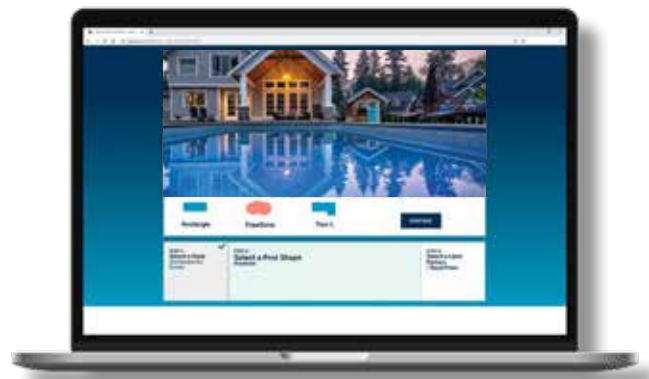
Our liners are fabricated using only premium vinyl material that meets and exceeds the industry standard. All Latham liners are formulated with antimicrobial and UV inhibitors, designed to resist normal degradation and provide a beautiful looking pool for years to come. In addition, our liners are custom-made based on your pool measurements using state-of-the-art design software, resulting in the industry's best fitting liner.



# Seeing is Believing

Show your customers the next level of personalization with Latham's Liner Visualizer Tool. Latham makes it easy to pick a backyard style, pool shape and liner pattern that accentuates their individual lifestyle—right down to the hue of the water.

[www.lathampool.com/latham-liner-visualizer](http://www.lathampool.com/latham-liner-visualizer)



To learn more about the Latham Visualizer Tool, scan the QR code



The NPT® Designer Surfaces collection, Stonescapes® and Jewelscapes® series, is exclusive to Premier.



Duomax 27/20 mil



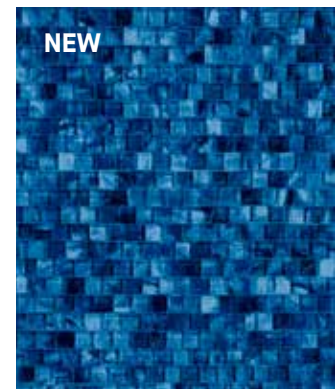
**Tivoli Blue**  
Marina Blue



**Pearl Mermaid**  
Pearl Cool Wave Indigo



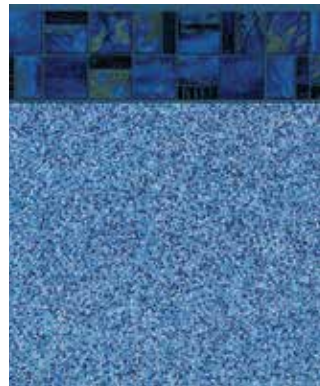
**Key West Pearl**  
Pearl Cool Wave Indigo



**Aquarius Candy**



**Equinox**  
Iolite



**Escapes**  
Marina Blue



**Ridgeline**  
Grey Tahoe



The Jewelscapes series features deep and vibrant gem tones.



The Stonescapes series alludes to the rich colors and textures found in natural bodies of water.





## The Ultra-Seam® Advantage

All Latham liners come with our exclusive Ultra-Seam® technology—the strongest seam you’ll never see. This patent-pending liner seaming technology not only provides stronger liner seams for your pool, it is also virtually invisible—something that standard welded liner seams simply cannot achieve.



**Standard** – Floor seams are visible on standard liners.

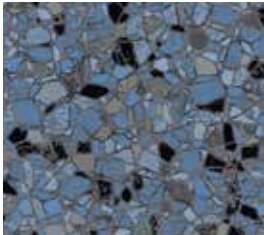


**Ultra-Seam** – No visible floor seams.



Full Print Butterfly Effect Liner

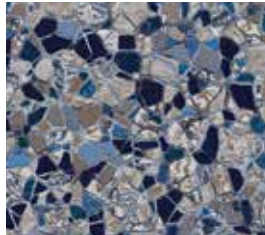
## Pearlscape 27 mil



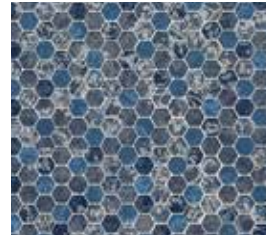
**Butterfly Effect**



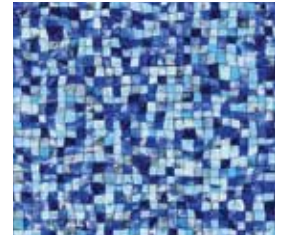
**Blue Slate**



**Pearlstone**



**Esagono**



**Disco Pearl**

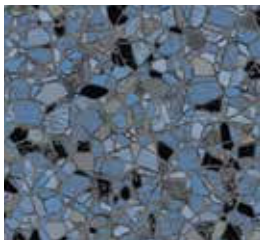
The Pearlscape™ Collection is the newest addition to our liner collection. The iridescent patterns of Pearlscape will glimmer in the sunlight, and reflect beautifully at night.

All vinyl liner graphics are for illustration purposes only. It is recommended by the manufacturer to view an actual vinyl sample before ordering your liner. Color may vary from printed brochure. The manufacturer reserves the right to change liner selections without notice.

# Borderless Patterns

All of our floor patterns are available as full-pool liners, without tile, for an even more luxurious effect.

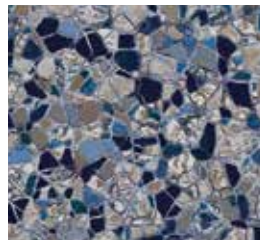
## Pearlscapes 27 mil



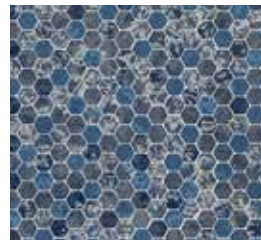
**Butterfly Effect**



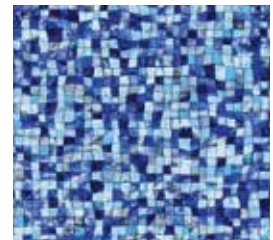
**Blue Slate**



**Pearlstone**

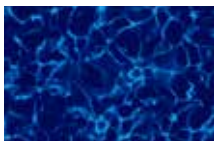


**Esagono**



**Disco Pearl**

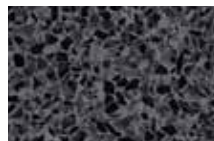
## Borderless Patterns 27 mil



**Cobalt Fusion**  
20 & 27 mil



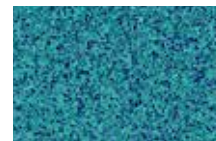
**Grey Mosaic**  
20 & 27 mil



**Stardust Grey**  
20 & 27 mil



**Mayan Mosaic**  
20 & 27 mil



**Terrazzo Caribbean**  
20 & 27 mil



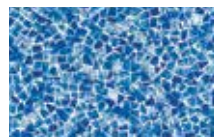
**Blue Mosaic**  
20 & 27 mil



**Stardust Blue**  
20 & 27 mil



**Blue Granite**  
20 & 27 mil

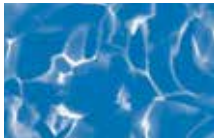


**Seaglass**  
20 & 27 mil

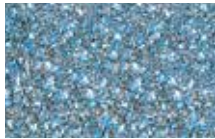




## Borderless Patterns 27 mil



**Royal Prism**  
27 mil



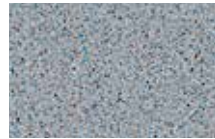
**Reef**  
27 mil



**Eclipse Amber**  
27 mil



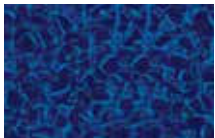
**Royal Amber**  
27 mil



**Grey Crystal**  
27 mil



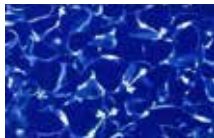
**Tan Seastone**  
27 mil



**Electric Aquarius**  
27 mil



**Blue Seastone**  
27 mil



**Mystic Light Blue**  
27 mil



**Crystal Quartz**  
27 mil

## All Floor Textured 27 mil



**Grey Bonair**  
27 mil



**Blue Bonair**  
27 mil

# Premier Vinyl Liners Pattern Selection

Featuring Latham's exclusive Ultra-Seam® technology,  
standard on every floor seam.

20 mil



**Mountain Top**  
Blue Mosaic



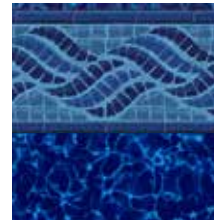
**Durango**  
Grey Mosaic



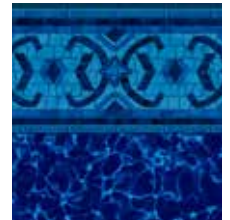
**Courtstone Grey**  
Stardust Grey



**Courtstone Blue**  
Stardust Blue



**Summerwave**  
Cobalt Fusion



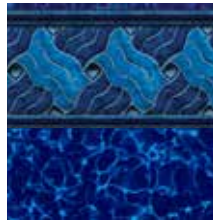
**Coventry**  
Cobalt Fusion



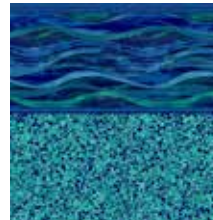
**Hampton**  
Seaglass



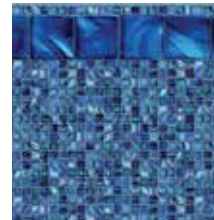
**Vintage**  
Blue Mosaic



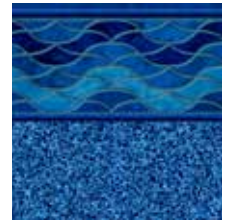
**Legends**  
Cobalt Fusion



**Island Wave**  
Terrazzo Caribbean



**Tulum**  
Mayan Mosaic



**Corolla**  
Stardust Blue

27 mil



**Mountain Top**  
Blue Mosaic



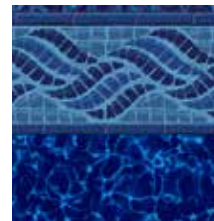
**Durango**  
Grey Mosaic



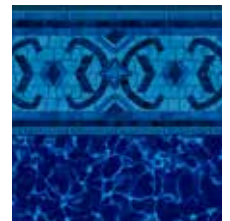
**Courtstone Grey**  
Stardust Grey



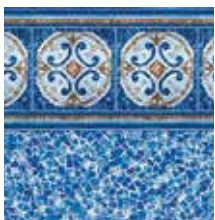
**Courtstone Blue**  
Stardust Blue



**Summerwave**  
Cobalt Fusion



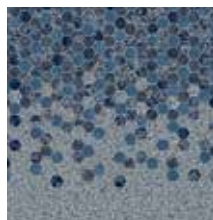
**Coventry**  
Cobalt Fusion



**Hampton**  
Seaglass



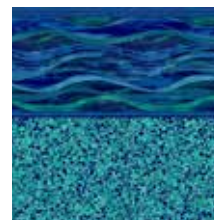
**Vintage**  
Blue Mosaic



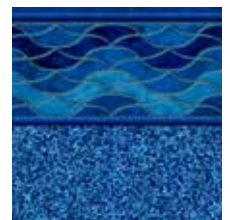
**Falling Esagono**  
Grey Crystal



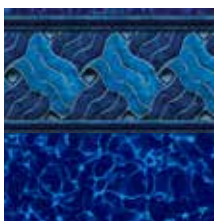
**Whitehaven**  
Crystal Quartz



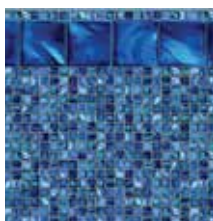
**Island Wave**  
Terrazzo Caribbean



**Corolla**  
Stardust Blue



**Legends**  
Cobalt Fusion



**Tulum**  
Mayan Mosaic

## Duomax 27/20 mil



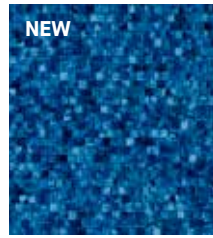
**Tivoli Blue**  
Marina Blue



**Pearl Mermaid**  
Pearl Cool Wave Indigo



**Key West Pearl**  
Pearl Cool Wave Indigo



**Aquarius Candy**



**Equinox**  
Iolite



**Escapes**  
Marina Blue

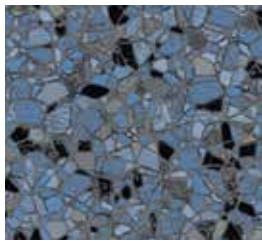


**Ridgeline**  
Grey Tahoe

### Warranty

Latham vinyl liners have a 20-year limited transferable warranty in the United States, with 3-year full coverage and 17-year prorated coverage against manufacturer defects.

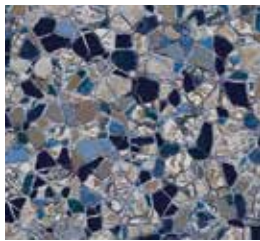
## Pearlscapes 27 mil



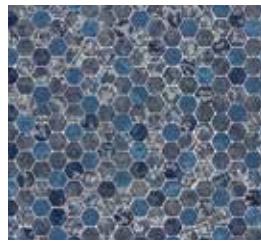
**Butterfly Effect**



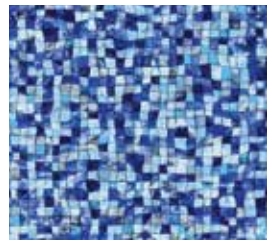
**Blue Slate**



**Pearlstone**



**Esagono**



**Disco Pearl**

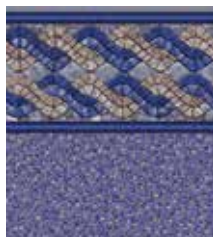
## SuperMax 27/27 mil



**Cayman**  
Mystic Light Blue



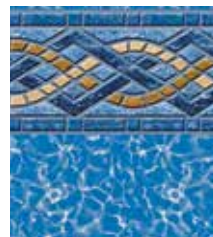
**Gulf Coast**  
Tan Seastone



**Nantucket**  
Blue Seastone



**Terrazzo**  
Electric Aquarius

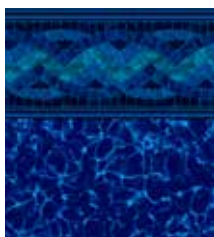


**Panama**  
Royal Prism



**Royal**  
Blue Mosaic

## Duomax 27/20 mil



**Carnegie**  
Cobalt Fusion



**Bali**  
Blue Granite



**Indigo Marble**  
Blue Granite

# Intro to Color

Creating a backyard oasis starts with the color of your pool. We've boutiqueed our patterns to help assist you in choosing the best look for you.



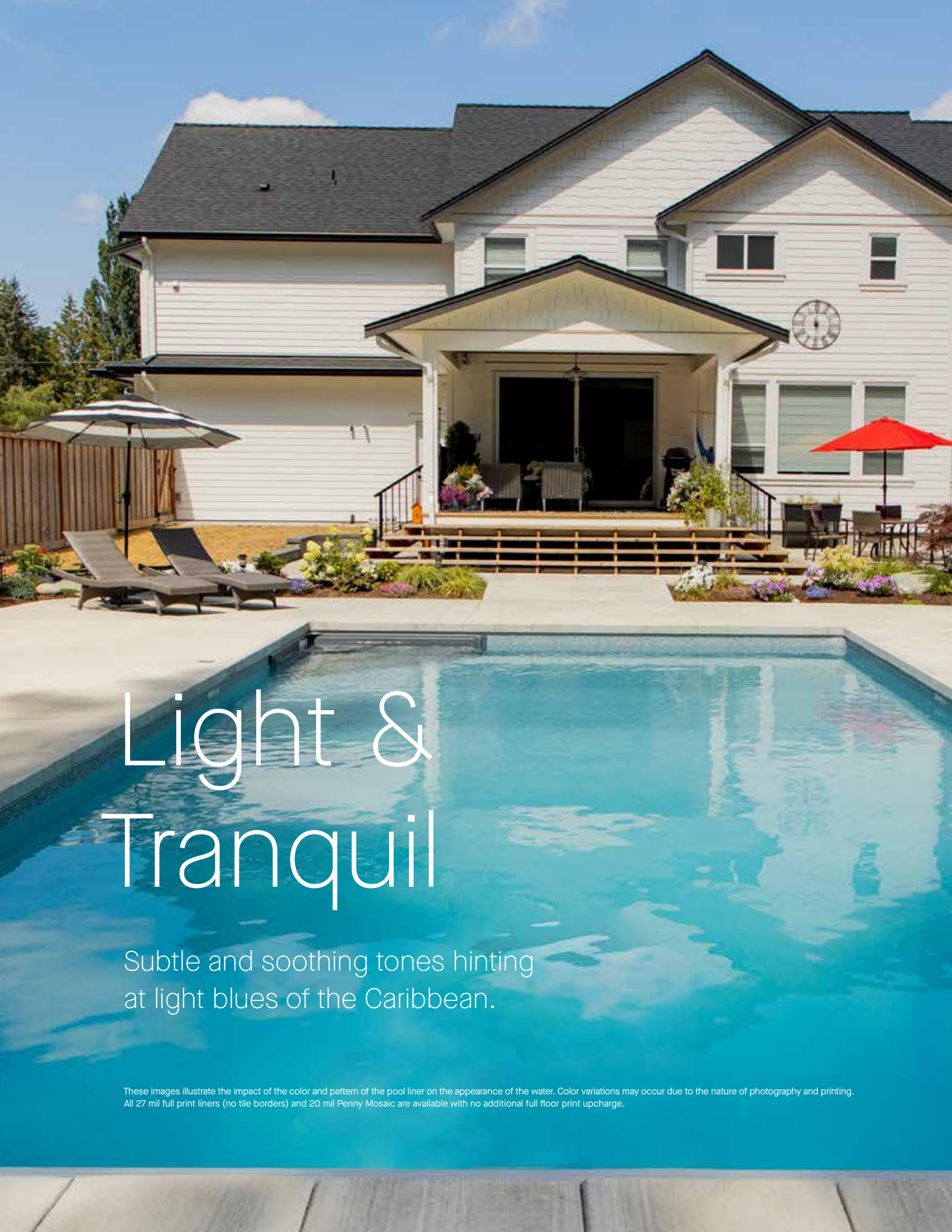
Light &  
Tranquil



Rich &  
Vibrant



Deep &  
Dramatic



# Light & Tranquil

Subtle and soothing tones hinting  
at light blues of the Caribbean.

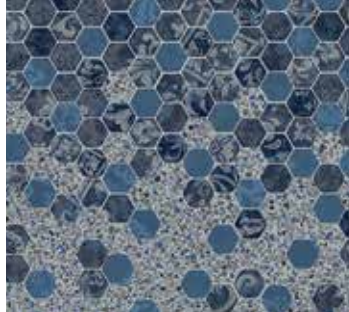
These images illustrate the impact of the color and pattern of the pool liner on the appearance of the water. Color variations may occur due to the nature of photography and printing. All 27 mil full print liners (no tile borders) and 20 mil Penny Mosaic are available with no additional full floor print upcharge.



**Durango**  
Grey Mosaic  
20 & 27 mil



**Courtstone**  
Stardust Grey  
20 & 27 mil



**Falling Esagono**  
Grey Crystal  
27 mil



**Grey Bonair**  
Grey Bonair  
27 mil  
Full Textured Floor

To learn more about the Latham Visualizer Tool, scan the QR code





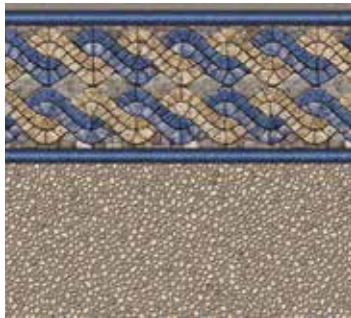
# Light & Tranquil

Be inspired by patterns from the lighter side of things.

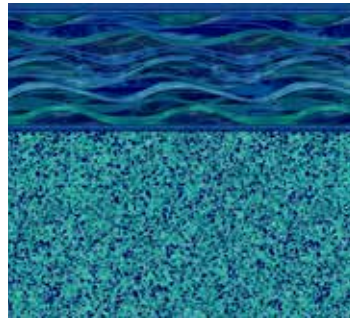


To learn more about the Latham Visualizer Tool,  
scan the QR code.

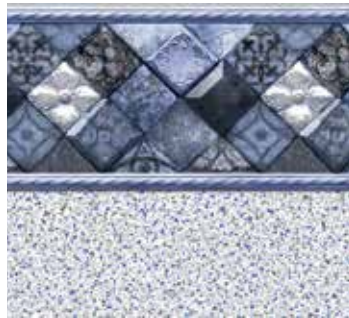




**Gulf Coast**  
 Tan Seastone  
 27 mil  
 Supermax



**Island Wave**  
 Terrazzo Caribbean  
 20 & 27 mil



**Whitehaven**  
 Crystal Quartz  
 27 mil



**Reef**  
 Reef  
 27 mil



# Rich & Vibrant

A collection of patterns for seaside elegance at home.

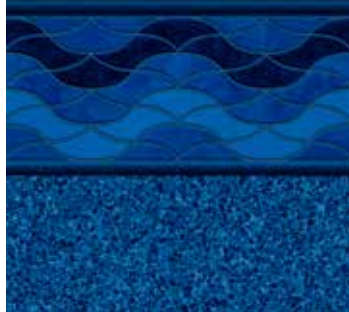
These images illustrate the impact of the color and pattern of the pool liner on the appearance of the water. Color variations may occur due to the nature of photography and printing. All 27 mil full print liners (no tile borders) and 20 mil Penny Mosaic are available with no additional full floor print upcharge.



**Bali**  
Blue Granite  
27/20 mil  
Duomax



**Indigo Marble**  
Blue Granite  
27/20 mil  
Duomax



**Corolla**  
Stardust Blue  
20 & 27 mil



**Courtstone**  
Stardust Blue  
20 & 27 mil

To learn more about the  
Latham Visualizer Tool,  
scan the QR code





# Rich & Vibrant

Classic blue color inspired by luxurious backyard lifestyles.



To learn more about the Latham Visualizer Tool,  
scan the QR code.



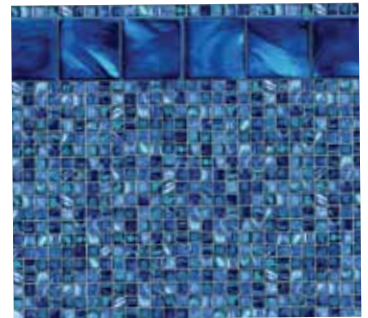
**Mountain Top**  
Blue Mosaic  
20 & 27 mil



**Vintage**  
Blue Mosaic  
20 & 27 mil



**Royal**  
Blue Mosaic  
27 mil  
Supermax



**Tulum**  
Mayan Mosaic  
20 & 27 mil

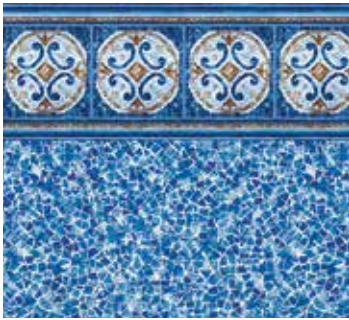


# Rich & Vibrant

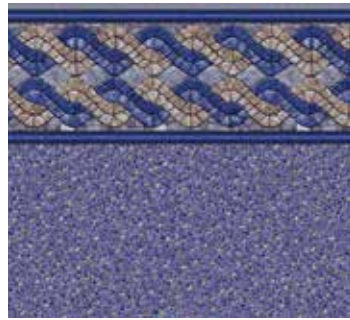
Timeless patterns add elegance to your backyard experience



To learn more about the Latham Visualizer Tool,  
scan the QR code.



**Hampton**  
Seaglass  
20 & 27 mil



**Nantucket**  
Blue Seastone  
27 mil  
Supermax



**Panama**  
Royal Prism  
27 mil  
Supermax



**Blue Bonair**  
Blue Bonair  
27 mil  
Full Textured Floor



# Deep & Dramatic

Bold and dramatic dark blues with striking patterns that make a statement

These images illustrate the impact of the color and pattern of the pool liner on the appearance of the water. Color variations may occur due to the nature of photography and printing. All 27 mil full print liners (no tile borders) and 20 mil Penny Mosaic are available with no additional full floor print upcharge.





**Cayman**  
Mystic Light Blue  
27 mil  
Supermax



**Royal Amber**  
Royal Amber  
27 mil



**Eclipse Amber**  
Eclipse Amber  
27 mil



**Terrazzo**  
Electric Aquarius  
27 mil  
Supermax

To learn more about the  
Latham Visualizer Tool,  
scan the QR code





# Deep & Dramatic

Select patterns of sophistication



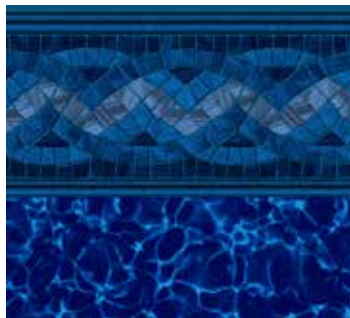
To learn more about the Latham Visualizer Tool,  
scan the QR code.



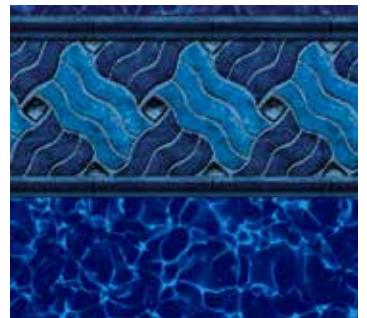
**Summerwave**  
Colbalt Fusion  
20 & 27 mil



**Coventry**  
Colbalt Fusion  
20 & 27 mil



**Carnegie**  
Colbalt Fusion  
27/20 mil  
Duomax



**Legends**  
Colbalt Fusion  
20 & 27 mil



Pictured: Full print Stardust Grey liner and full-width straight step.

# Vinyl Over Steps

Vinyl over steel or polymer steps are a beautiful match for your pool. The vinyl liner material matches the pool and envelops the steps completely, creating a sleek appearance.

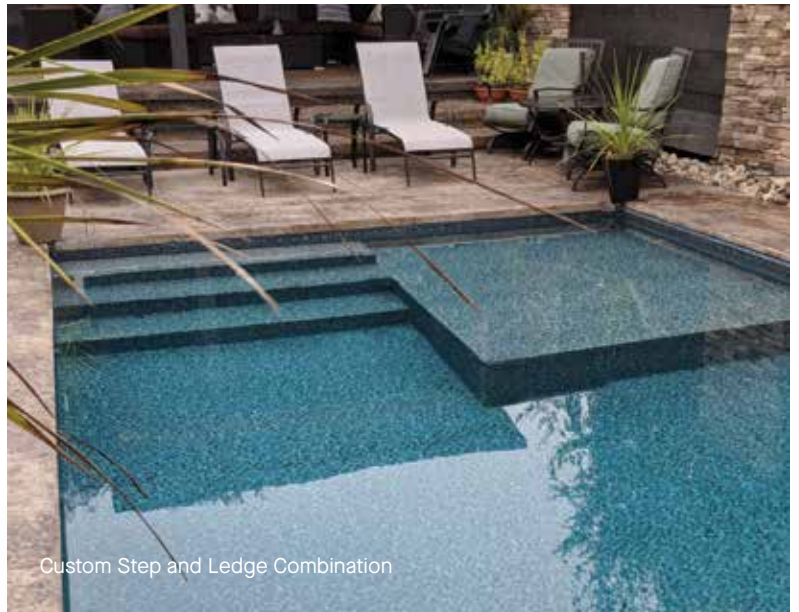
Choose from countless options of step designs, benches and ledges to create the ideal pool of your dreams.



Radius Step



Custom Straight Step



Custom Step and Ledge Combination

## Features and Benefits

These steps are installed within the perimeter of the pool giving a sleek style that mimics that of concrete pools with the added style of your vinyl liner. Vinyl pool liners are designed to be an exact fit over the steps.

- **Use either existing or custom-made designs:** Designs extend as far as your imagination will take you.

- **Add-on unique features:** Features such as tanning ledges and fountains can be incorporated into your designs.
- **Textured vinyl surface:** Our Tread-TEX textured vinyl for the steps provide additional comfort and convenience for entering/exiting your swimming pool with a seamless look.

All floor patterns are available in Tread-TEX for vinyl over step application.

# Vinyl Liner Selection Specifications

Tile Pattern	Floor Pattern	Weight	Tile Height	Shade
Tivoli	Marine Blue	27/20 mil	6-3/8"	Rich & Vibrant
Pearl Mermaid	Pearl Cool Wave	27/20 mil	6-3/8"	Rich & Vibrant
Key West	Pearl Cool Wave	27/20 mil	6-3/8"	Rich & Vibrant
Aquarius	Candy Light Blue	27/20 mil	Borderless	Rich & Vibrant
Ridgeline Stonescape	Grey Tahoe	DuoMax 27/20	6-3/8"	Light & Tranquil
Escapes Jewelscape	Marina Blue	DuoMax 27/20	6-3/8"	Rich & Vibrant
Equinox Jewelscape	Iolite	DuoMax 27/20	10-1/8"	Light & Tranquil
Mountain Top	Blue Mosaic	20 & 27 mil	8-7/8"	Rich & Vibrant
Durango	Grey Mosaic	20 & 27 mil	9"	Light & Tranquil
Courstone Grey	Stardust Grey	20 & 27 mil	11"	Light & Tranquil
Courtstone Blue	Stardust Blue	20 & 27 mil	11"	Rich & Vibrant
Summerwave	Cobalt Fusion	20 & 27 mil	9"	Deep & Dramatic
Coventry	Cobalt Fusion	20 & 27 mil	9"	Deep & Dramatic
Hampton	Seaglass	20 & 27 mil	9-5/8"	Rich & Vibrant
Vintage	Blue Mosaic	20 & 27 mil	9"	Rich & Vibrant
Legends	Cobalt Fusion	20 & 27 mil	9"	Deep & Dramatic
Island Wave	Terrazzo Caribbean	20 & 27 mil	8-1/4"	Light & Tranquil
Tulum	Mayan Mosaic	20 & 27 mil	6"	Rich & Vibrant
Corolla	Stardust Blue	20 & 27 mil	9"	Rich & Vibrant
Cayman	Mystic Light Blue	Supermax 27 mil	9-1/4"	Deep & Dramatic
Royal	Blue Mosaic	Supermax 27 mil	7-3/4"	Rich & Vibrant
Gulf Coast	Tan Seastone	Supermax 27 mil	10-1/2"	Light & Tranquil
Nantucket	Blue Seastone	Supermax 27 mil	10-1/2"	Rich & Vibrant
Terrazzo	Electric Aquarius	Supermax 27 mil	10"	Deep & Dramatic
Panama	Royal Prism	Supermax 27 mil	10"	Rich & Vibrant
Falling Esagano	Grey Crystal	27 mil	Varies	Light & Tranquil
Whitehaven	Crystal Quartz	27 mil	7-1/4"	Light & Tranquil
Indigo Marble	Blue Granite	Duomax 27/20 mil	9-1/4"	Rich & Vibrant
Bali	Blue Granite	Duomax 27/20 mil	9"	Rich & Vibrant
Carnegie	Cobalt Fusion	Duomax 27/20 mil	9"	Deep & Dramatic

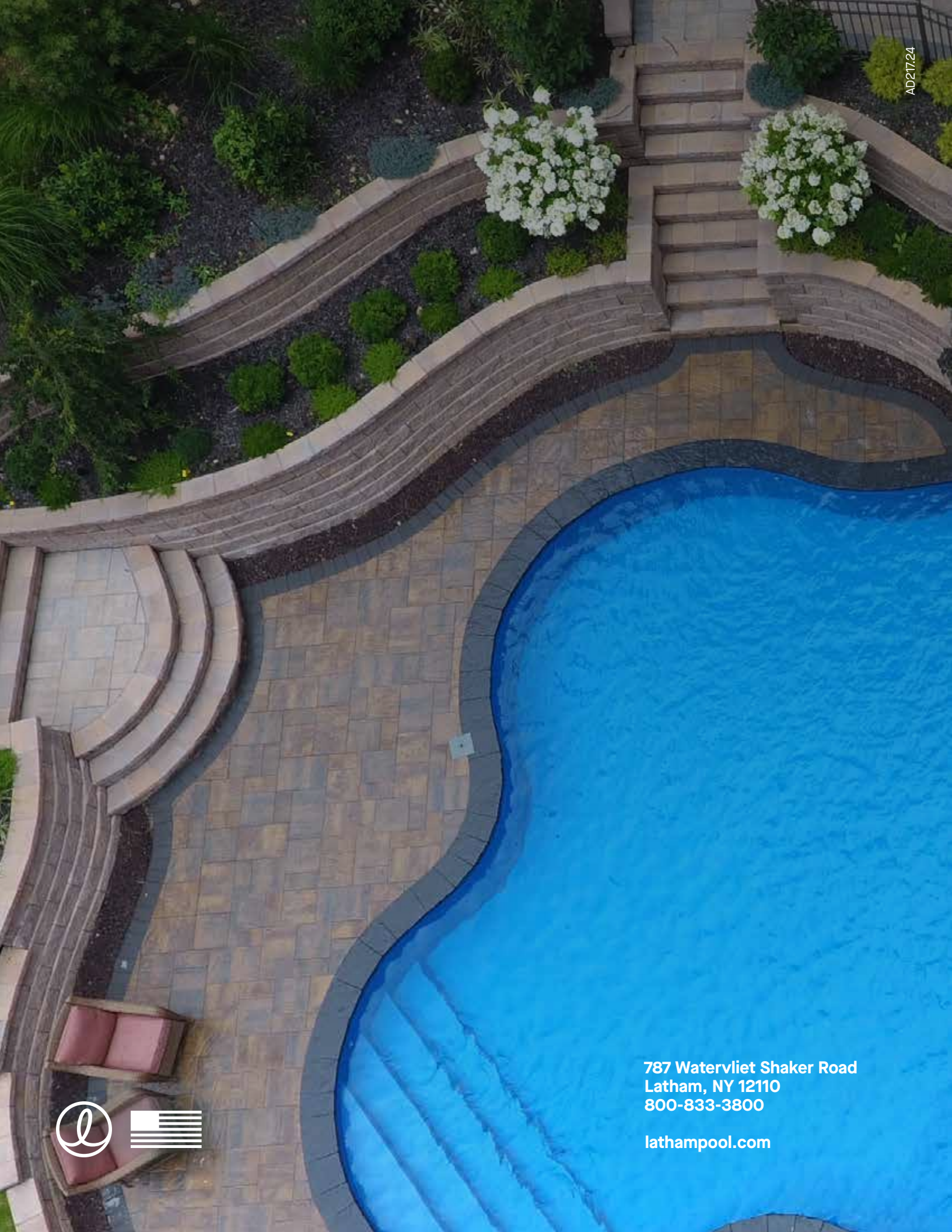
References to light, medium and dark shades are general and do not guarantee the effect the vinyl liners will have on the color of a pool. All vinyl liner graphics are for illustration purposes only. It is recommended by the manufacturer to view an actual vinyl sample before ordering your liner. Color may vary from printed brochure. The manufacturer reserves the right to change liner selections without notice.

NOTICE: The manufacturer stands behind every product they produce pursuant to those representations which are stated in the written warranties. Your dealer/builder/contractor is an independent businessperson and not an agent or employee of the manufacturer. The manufacturer cannot and does not accept any responsibility for any representations, statements or contracts made by any dealer/builder/contractor.

The specifications in this brochure were believed to be true at the time of printing. However, specifications, standard equipment and options are subject to change without notice.

The manufacturer does not manufacture slides, diving boards, or any other diving equipment. Any use of such equipment must be in strict compliance with the equipment manufacturer's specifications, as well as local building codes and regulations.

In some pictures, the safety line rope and floats, and safety signage have been removed from the pool for photographic purposes. The safety line should be permanently attached at all times. We also urge you to use handrails and grab rails in accordance with the PHTA Standards.



787 Watervliet Shaker Road  
Latham, NY 12110  
800-833-3800

[lathampool.com](http://lathampool.com)