

Illinois Valley Fire District

2016 Annual Report

Photo By Dale Sandberg



Message from Fire Chief Hoke

It is my honor to present the 2016 Annual Report. IVFD responded to 1374 calls for service in 2016. Once again, an increase from previous years. While 65% of the calls were medical, we had two significant wildland fires that IVFD and our mutual aid partners were able to hold in check with only three homes lost. This is testament to the dedicated members of the Illinois Valley Fire District.

The Illinois Valley Fire District is primarily a volunteer organization with 4 career staff, volunteer firefighters, Support Services and the Civilian Emergency Response Team (CERT). They are the backbone of IVFD. Without their dedication and determination, we would not be able to respond to the needs of the community. IVFD member's make a difference. We had two documented life saves in 2016 and numerous other events that made a difference in the lives of our citizens.

We have made great strides in upgrading our fleet. We received a grant to purchase a new engine for Selma. This allowed us to reallocate apparatus to better serve the community and to have a true reserve engine. We took advantage of an excess military chassis and converted it to a 3000 gallon tender. Taxpayer cost was \$34K. If we had to purchase this new, the cost would be over \$180K. This worked so well, we are building a second

tender that will be delivered in early 2017.

We could not do this alone. The Josephine and Jackson County fire agencies rely heavily on each other to support large scale events. American Medical Response (AMR) houses a paramedic ambulance at IVFD Fire Station 1 in Cave Junction. This partnership is a success story for both organizations. We operate as one team with the goal of exceptional patient care.

The annual report is a statistical analysis of our activities in 2016. We must look at our past to plan for the future. 2017 will be a monumental year as we ask the voters to transition to a combination fire district by adding additional paid firefighters. As our community continues to grow, we continue to see an increase in call volume and increased demands on volunteer members.

We are grateful for the support of the Illinois Valley Community, our Fire District Commissioners, and for your continued support. IVFD strives to provide exceptional, proactive, efficient emergency services within the constraints of our budget.

Dennis L. Hoke
Fire Chief



History

In 1954 the Illinois Valley Rural Fire Protection District was formed. It was originally formed by farmers who volunteered their time to keep their community safe. From its inception, volunteers have been the backbone of the District and continue to keep us moving forward with their hard work and dedication to the safety of our communities.

The Illinois Valley Fire Protection District currently protects the communities of: Selma, Kerby, Cave Junction, Takilma, and O'Brien. The District is about 144 square miles covering the Redwood Highway corridor; extending from the top of Hayes Hill to the California border. The Fire District responds regularly for mutual aid assistance with Rural Metro Fire, Gasquet Fire, Oregon Caves, BLM, Forest Service and unincorporated areas of Josephine County. With mutual aid, our total response area is over 200 square miles.

In recent years, the overall scope of emergency services provided by IVFD has broadened beyond fire suppression to include medical emergencies, public assists and rescues. Medical calls accounted for approximately 52% of our calls in 2016, while fires accounted for 24%, traffic accidents accounted for 13% and assists to the public accounted for 11%.

The status of our facilities and equipment is mixed. Our personal protective equipment and radios meet current standards thanks to a bond levy passed by the voters in 2012. We do have mostly aging apparatus but have replaced some of our key equipment and are currently working on another tender which we received from the FEPPS program.

2015

- Replaced the tender at station 3 with new FEPPS rebuild "The Beast".
- We also received a federal grant for a new engine which will be delivered in 2016.
- We re-purposed a donated van into the new CERT (Citizens Emergency Response Team) vehicle.
- Replaced one of the older command vehicles.
- Thanks to the FEPPS program we also acquired two new generators for Stations 2 and 3.



2016

- New Engine arrived and is now in service at Station #2.
- A second FEPPS vehicle was awarded and is currently being turned into a water tender. This should be completed in 2017. This new tender will replace one of our older apparatus, with the older apparatus being sold.
- Upgraded one command vehicle (8954).

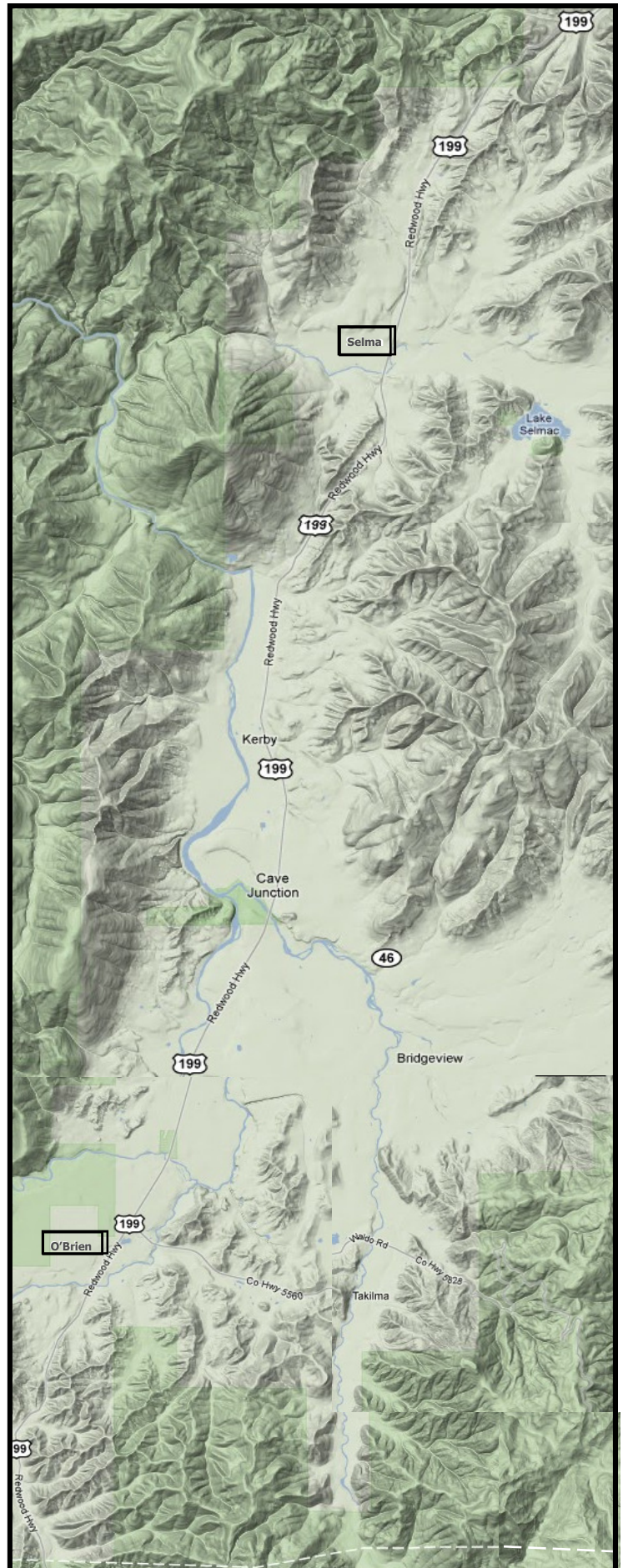
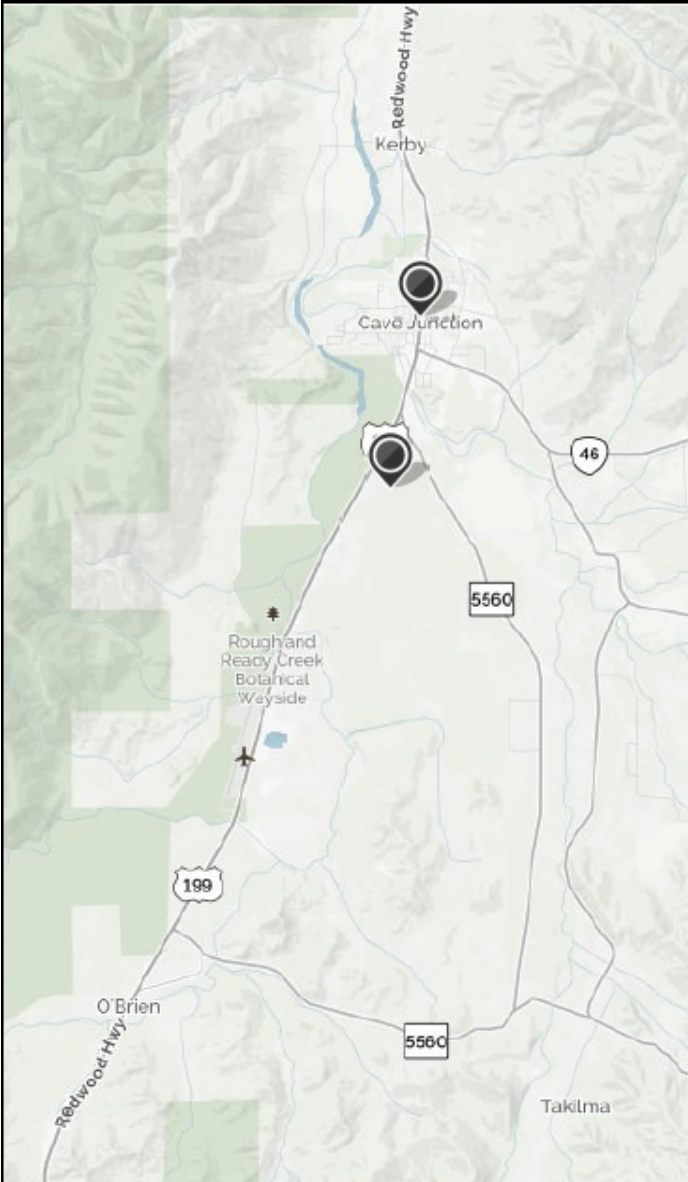


Four of the fire stations and our administration building are relatively new. They will continue to serve the District for many years to come. However, the fire stations located in Dryden and Takilma are long-past their serviceable life and present a significant challenge to the District. In 2016 we began meetings with the Grange Co-op in Selma to see if we might be able to re-locate station 5 to their property. We are hoping for a mutually beneficial outcome. We are also working on getting the roof replaced at our Dryden station.

Illinois Valley Fire District Vital Statistics 2016-2017 fiscal year

Land Area	144 Square Miles
Approx. Population	17,000
Government	Special District
Assessed Valuation	610,096,072
Fire District Budget	1,797,530
ISO Insurance Classification	4 / 10 w

*Source: 2016-2017 Audit Report
(includes bond debt & capital outlay)*



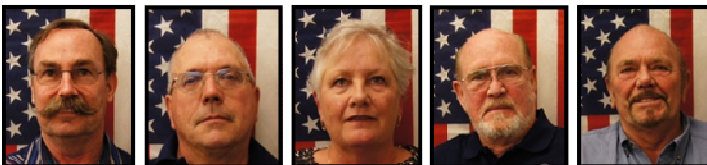
Fire District Administration

Board of Commissioners:

Illinois Valley Fire District is governed by a Board of Commissioners. There are five members on the Board of Commissioners who are voted in by the citizens of The Illinois Valley. The Board of Commissioners oversee the Fire Chief and the Fire Chief, in turn, oversees the rest of the administration staff.

Current IVFD Board of Commissioners:

- President: Ron Humphres
- Vice President: Richard Bouchard
- Secretary: Carol Dickson
- Commissioner: Edwin "Bob" Butler
- Commissioner: Jerry Lamb



Fire Chief:

A fire chief is a firefighter who has accumulated the education, training and experience needed to advance through the ranks. Working with other emergency response leaders, a fire chief, helps coordinate fire control, rescue, hazardous material clean-up and medical treatment efforts. A fire chief uses his or her experience in fire protection and prevention to direct the response of firefighters to limit damage, danger and loss of life.

Deputy Chief:

A deputy fire chief is the second in command of a fire department. The job comes with significant responsibility; in addition to his/her own duties, the deputy chief takes the lead in the absence of the fire chief. The position includes a combination of administrative duties such as training officer, safety officer, and grant writer. He/she also spends time in the field to keep operations running efficiently in the fire department.

Administration Division Chief:

Under general direction, the Fire Department Admin-

istrative Manager manages the administration support services of the Fire District. Responsibilities include providing general and confidential administrative support to the Fire Chief, managing the department's records and communications functions, coordinates various administrative and staff functions/work loads, is responsible for the department's budgeting and purchasing activities, and serves as clerk for the Board of Directors. As a member of the department's management team she/he coordinates activities with other City, County, Regional, and State departments and the general public. Performs other duties as assigned.

The Operations and Prevention Division Chief / Fire Marshal:

In alignment with the District/s strategic plan and Fire Prevention initiatives, the Fire Marshal is primarily responsible for developing and managing a comprehensive, effective fire prevention program. The position is responsible for overseeing such programs as construction and code enforcement inspections, plan review, fire investigations, weed abatement, public education and public relations. He/she is also responsible for issuing fire permits and enforcing these regulations. He/she performs other duties as required. The Fire Marshal reports directly to the District Fire Chief.

Logistics Division Chief:

Manages the procurement and maintenance of all fire department assets including: fire department facilities, fire fighting apparatus and equipment, and department vehicles. He/she is responsible for fleet maintenance and manages coordinates department needs with external vendors as well as OSHA compliance. He/she reports directly to the District Fire Chief. Performs other duties as assigned.

Our Fire Chief, Deputy Chief, Operation and Preventions Chief and Logistics Chief also perform duty officer tasks, firefighting tasks, and medical tasks.

Personnel



The District is lead by the Fire Chief, **Dennis Hoke**. Chief Hoke started with the District in February of 2013 and brings with him many years in the fire service industry, both as a volunteer and as a career firefighter. Additionally, Chief Hoke is a Nationally Certified Paramedic. His style is to lead by example, and in doing so, has raised the bar for the entire District. Chief Hoke strives to improve our Fire District by finding ways to upgrade our apparatus and equipment as well as training our volunteers in the newest techniques.



Deputy Chief, **Jeff Gavlik**, has been dedicated to IVFD since 1994, first as a volunteer and now as the Training Officer. Chief Gavlik is also our grant writer and does his best to supplement our district when grants opportunities are available. Deputy Gavlik has a heart-felt compassion for the Illinois Valley.



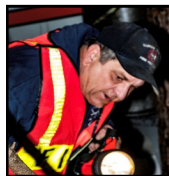
Division Chief, **Kamron Ismaili**, has been involved in the District since 2003, first as a volunteer and now as Division Chief of Operations and Prevention as well as our Fire Marshal. Chief Ismaili is committed to the District and gives his best at all times.



Division Chief, **Kris Sherman**, started out as a volunteer in 2003 and now is the Division Chief of Logistics. Chief Sherman excels at keeping the apparatus running and all equipment maintained and tested for the safety of our staff and volunteers. He also keeps all our stations in tip top shape.



Robin Paulson, started with the District in 2005. As Division Chief of Administration she diligently takes care of payroll, leave and benefit records as well as keeping all the accounts paid and in order. She walks in many shoes and keeps things in the office running smoothly.



Thomas McCauley, joined the District in 2013 as our fleet mechanic. With eagerness and a willing spirit he completed the Firefighter 1 Academy and is actively participating as a firefighter as well as keeping our apparatus up and running efficiently.



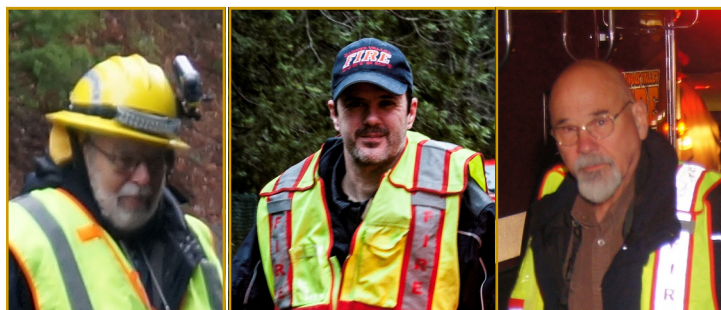
David White started with the District as a volunteer in 2004, donating his time to keep our "office" machines working. When the computers go down, and technology changes (as it is forever doing), David steps up to the plate and works his "magic". His commitment and his quiet dedication to the District, keeps us moving forward.

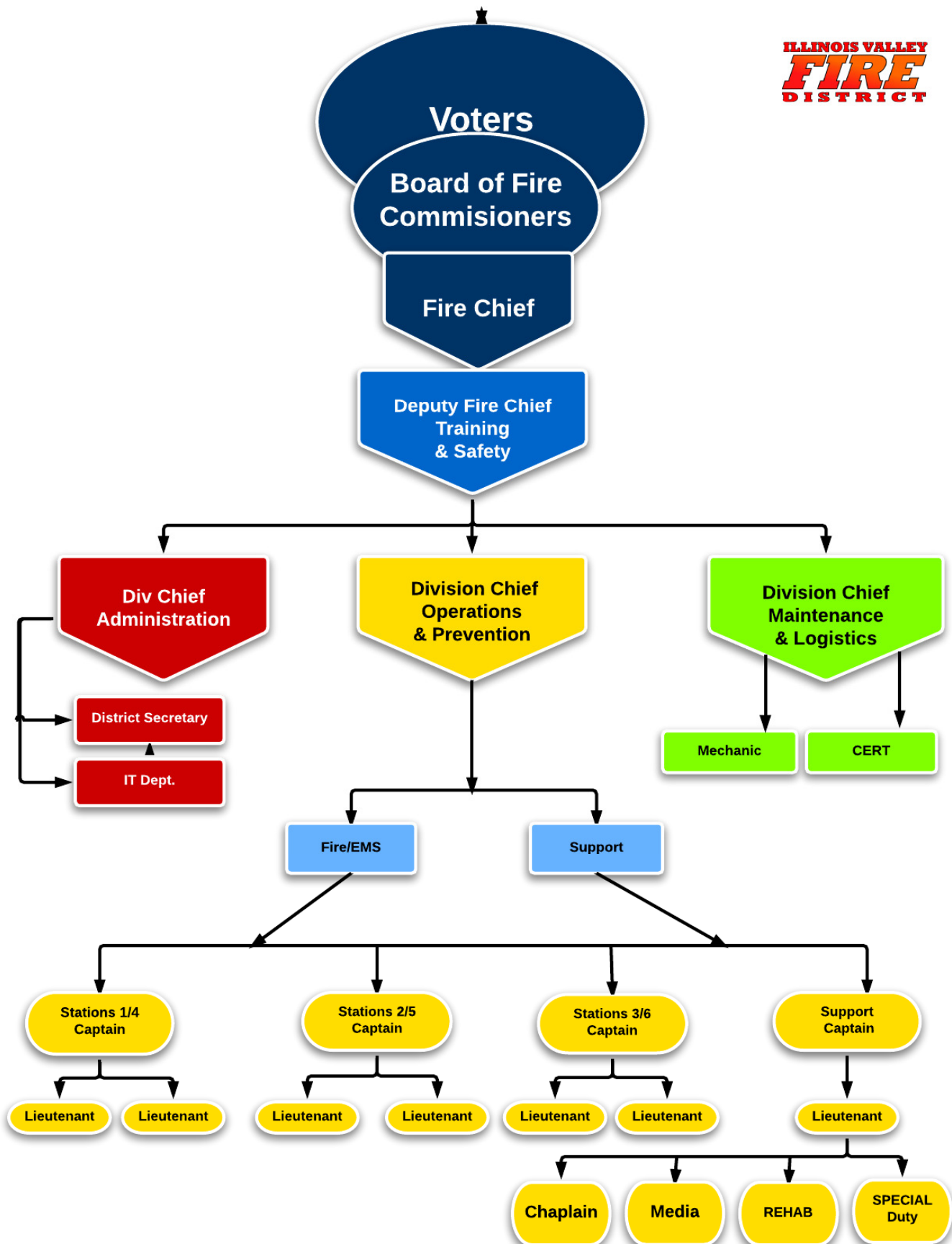


Jamie Paul joined the District in September of 2014. She originally came on board as a front desk/billing clerk but is now our District Secretary and billing clerk. She has become an asset to our District with her diligence and hard work.

Volunteers

In 2016 volunteers contributed thousands of hours to the Illinois Valley Fire District. Our volunteer roster included citizens from all walks of life: mill workers, bankers, retirees, law enforcement professionals, students, and food service workers to name a few. Our volunteers share a commitment to public service and the citizens of the Illinois Valley. They are essential to the mission of the District. Although the number of volunteers fluctuate their dedication to the Illinois Valley never does.





24 Hour District Coverage

Paid Staff:

The paid staff works Monday through Thursday from 07:00 hours to 17:00 hours.

Volunteer Hours:

Volunteer shifts run Monday through Thursday from 19:00 hours to 07:00 hours. Friday through Sunday from 07:00 hours to 19:00 hours for the day shift and 19:00 hours to 07:00 hours for the night shift.

This configuration maintains available responders in the District and sustains a constant state of readiness.

Duty Officer:

The Duty Officer acts as the Fire District's command authority when other higher-ranking officers are off duty or unavailable. They also supervise the volunteers. The duty officers are: Fire Chief Dennis Hoke, Deputy Chief Jeff Gavlik, Div. Chief Kris Sherman, and Div. Chief Kamron Ismaili. The duty officers work on a rotating schedule to keep 24/7 coverage in our district.

Shift Staffing:

The Shift Staffing program provides a minimum one person staffing level in the District at all times. It requires the volunteers to staff Station #1 for at least two 12 hour shifts per month or pull a modified duty. Station #1 (Cave Junction) was designated as the location for the program because it is centrally located and has appropriate accommodations. The Duty Officer of the day assists the crews with on-shift training and decision making.

Resident and Student Programs:

The resident program requires each resident to pull ten 24 hour shifts each month; staffing either Station 1 or Station 2. In return they receive free housing, kitchen, laundry, and weight room use, and free utilities including TV and internet access. They also receive hands on training in Firefighting, Rescue, and EMS.

The student program also requires each Firefighter to pull ten 24 hours shifts each month; staffing either Station 1 or Station 2. Students for the Illinois Valley

Fire District will receive either a tuition reimbursement or payment directly to the college institution for each credit hour that they register for, including books, up to the program maximum allocated amount, currently \$1,800. (Subject to change).

Our resident and student program have been a tremendous help with shift staffing. This program helps station residents and students further their careers while helping the Fire District with shift coverage. The end result is staffed units out the door faster as well as better educated and trained members for our District.

In 2016 the District did not reach the goal of having a minimum 2 person shift crew 100% of the time. This has caused the Illinois Valley Fire District to stop doing swift water rescue and may cause the cut of other services in the future; such as car seat clinics. We have been struggling with keeping up the mandatory training and are doing our best to keep services. However, some of this shortfall was mitigated by the availability of our dedicated on-call volunteers.

The IVFD is always accepting volunteer applications and hopes to expand the coverage in 2017.



Apparatus:

We acquired a large military vehicle from the FEPPS program in 2015 which was converted into a tender. This project was completed in 2016. This water tender has lovingly been named "The Beast" and will be a wonderful asset to station #3 in O'Brien. We also acquired a second large military vehicle from the FEPPS program in 2016 which will be completed in 2017. This vehicle will also be converted into a water tender and will help to upgrade another of our older apparatus. This vehicle has yet to be named but will lovingly be named eventually.

In 2015 we were awarded a grant for a new Engine. This engine was received and put into service at station #2 in July of 2016. Once again this vehicle will help to upgrade another piece of aging apparatus.

Training:

We participated in two regional fire academies; producing eight new Firefighters, five of whom are still with us. Congratulations to: J. Bowers, J. Webb, B. Hutson, J. Bayless, N. Miller, J. Hitchcock, T. Wallace, and B. Pfeiffer.

We trained 14 new EMR's (Jay and Loretta Webb, Sherryl Baker, Daniel Marler, Tom McCauley, Dan Johnson, Ned and Patty Booth, Nicholette Pavlesky, Brian Pingree, Sally and Katelyn Cumberworth, Sandra Graham, and Brook Gregory) and provided CPR training as needed. We had one firefighter get his EMT and a second working on completing his. This will greatly improve our medical response capabilities.

Our resident and student program is in full swing and has helped with shift staffing. This program helps station residents and students further their careers while helping the Fire District with shift coverage. The end result is staffed units out the door faster.

Division Chief K. Ismaili and Lt. J. Latva completed the Fire Instructor I class with a possibility of taking the Fire Instructor II class in the future. Chief Ismaili also received his Fire Inspector II certification.

Continued Education/Training is a priority with IVFD and we provide as much training for our staff and volunteers as possible. We already have volunteers who will be attending the next Firefighter I academy and a few that are continuing their education in the medical

field (EMT and Paramedic) at this time.

The advanced training is an asset to our district and our community as a whole.

Finance and Budget

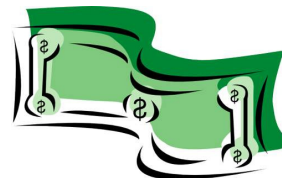
Budget

Illinois Valley Fire District has a fiscal year of July 1 through June 30 of the following year. During the fiscal year 2015-2016 our District collected revenues is the amount of \$1,941,274 for operational expenses (not including capital project fund monies or bond debt payments). Actual amounts spent came to the total of \$1,863,522 —putting the District under budget in the amount of \$77,753.

This year was a great year for the District's ability to secure grants. Specifically, we were able to obtain a grant in the amount of \$333,334 towards the purchase of a new fire engine from Department of Homeland Security (FEMA). Additionally, the District was awarded funds to purchase an advanced life support training manikin from the Chaney Foundation.

Our levy for the purchase of equipment, radios, and personal protective gear has expired as of November 2016. During the five year levy, the District received \$521,766. The District honored the voter's support and spent \$550,790 for the purchase of new Self Contained Breathing Apparatus, radio system, fire turnouts, helmets, wild land gear and gloves, as the levy authorized. The additional funds spent on the equipment came out of the general fund. NO LEVY FUNDS were spent on any operational expenses, or personnel.

It's the District's goal to earn the trust of the voter's and honor their wishes, and we believe we have met that goal.



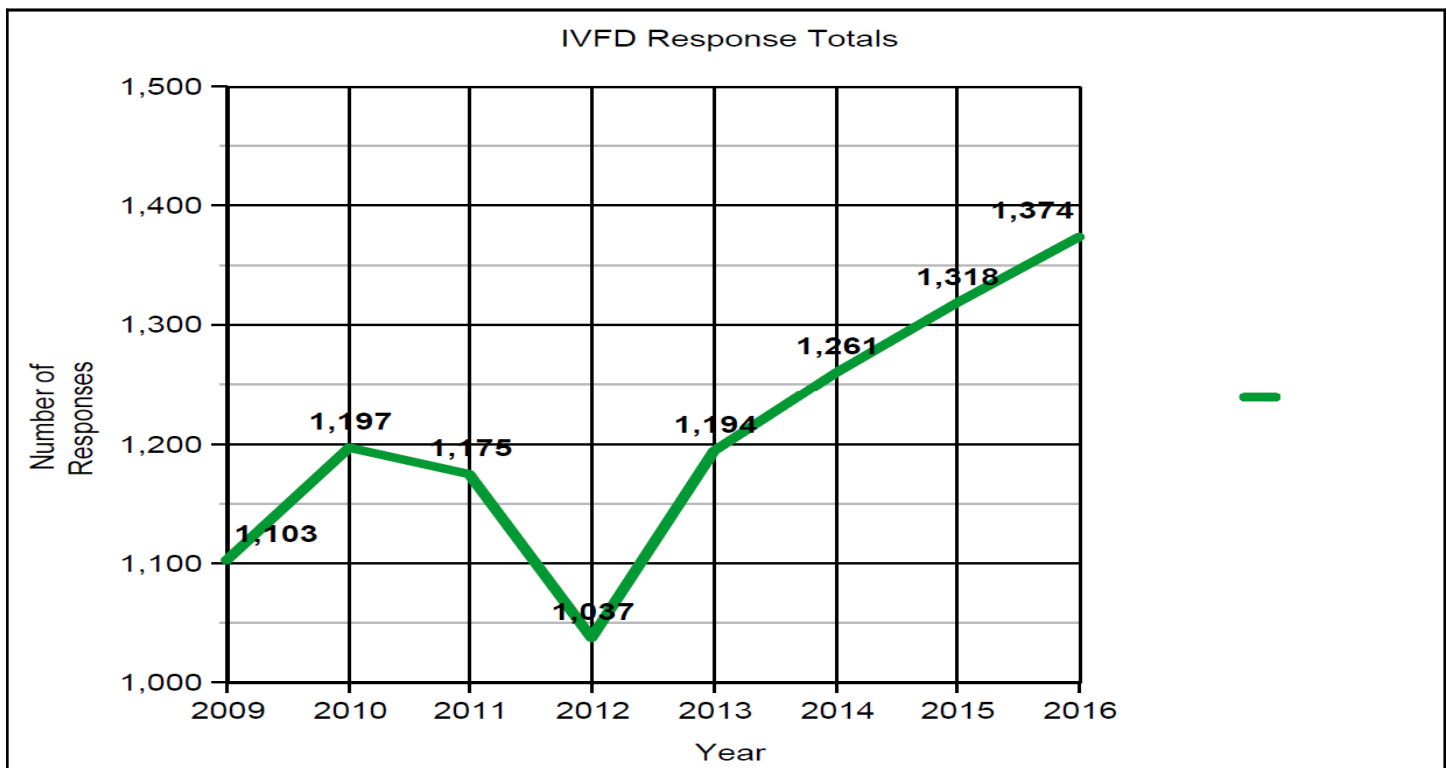
Emergency Services

The past year for the Fire District was busy to say the least. We responded to **1374** calls which included: 713 Medical calls, 332 Fire calls, 182 Traffic Accidents and 147 Public Assists.

The Illinois Valley Fire District encompasses approximately 144 square miles. The Fire District responds regularly for mutual aid assistance with Rural Metro Fire, Gasquet Fire, Oregon Caves, BLM, Forest Service and unincorporated areas of Josephine County. We also aid local law enforcement when requested for standby situations. With mutual aid, our total response area is over 200 square miles.

Total Number of Responses for 2016: 1374

* Number variation due to dispatch error



<div> <div>STATE OF OREGON</div> <div>INCIDENT REPORTING SYSTEM</div> </div>		<div>Annual Alarm Summary Report</div> <div>Reporting Between: 01/01/2016 - 12/31/2016</div> <div>Printed On: 01/23/2017</div>											
Situation	Jan 16	Feb 16	Mar 16	Apr 16	May 16	Jun 16	Jul 16	Aug 16	Sept 16	Oct 16	Nov 16	Dec 16	Total
100 Series Fire	6	2	8	6	5	7	4	12	4	9	3	3	69
200 Series Overpressure Rupture, Explosion, Overheat(no fire)	0	0	0	0	0	0	1	0	1	0	0	1	3
300 Series Rescue & Emergency Medical Service Incident	60	65	80	59	62	95	76	83	79	65	68	67	859
400 Series Hazardous Condition(No fire)	3	2	9	9	1	2	4	1	1	2	0	0	34
500 Series Service Call	16	6	12	15	15	32	14	23	25	37	15	19	229
600 Series Good Intent Call	9	14	13	11	8	25	21	8	8	19	9	12	157
700 Series False Alarm & False Call	3	2	3	0	1	2	0	3	5	2	0	3	24
Grand Total	97	91	125	100	92	163	120	130	123	134	95	105	1375

Call Volume:

Call volume also changes by hour of the day and day of the week. The following graphs give information on volume by hour of the day and the day of the week.

1/23/2017

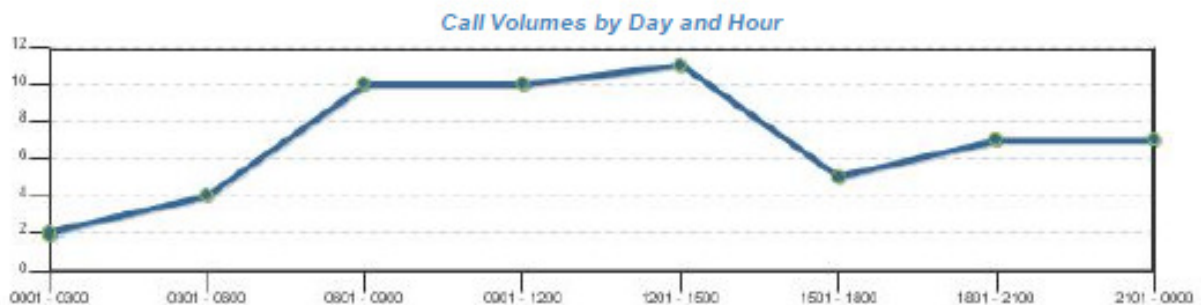
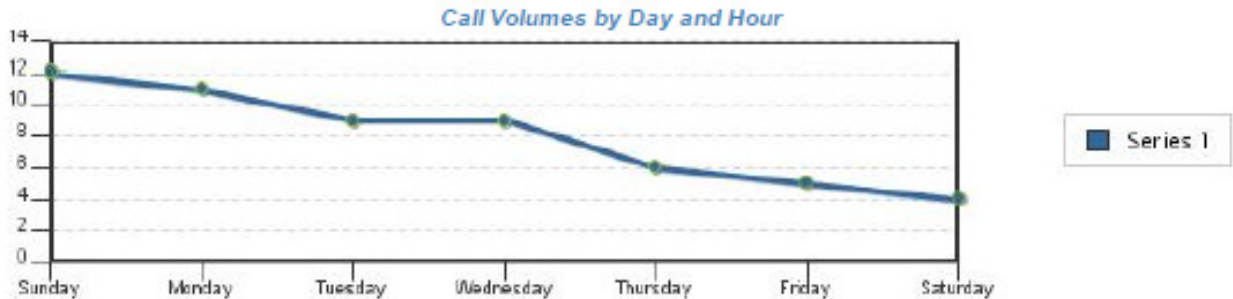
#form.report_title#



STATE OF OREGON
INCIDENT REPORTING SYSTEM

Call Volumes by Day and Hour
From 01/01/16 To 12/31/16
Report Printed On: 01/23/2017

Hour	Sunday	Monday	Tuesday	Wednesday	Thursday	Friday	Saturday	Total	Average	Percentage
0001 - 0300	0	0	1	0	1	0	0	2	0	3.57%
0301 - 0600	2	1	0	1	0	0	0	4	1	7.14%
0601 - 0900	1	5	0	1	0	2	1	10	1	17.86%
0901 - 1200	1	2	2	3	0	1	1	10	1	17.86%
1201 - 1500	2	1	2	2	3	1	0	11	2	19.64%
1501 - 1800	1	2	2	0	0	0	0	5	1	8.93%
1801 - 2100	1	0	2	2	1	0	1	7	1	12.50%
2101 - 0000	4	0	0	0	1	1	1	7	1	12.50%
Total	12	11	9	9	6	5	4	56	8	100.00%
Average	2	1	1	1	1	1	1	7		
Percentage	21.43%	19.64%	16.07%	16.07%	10.71%	8.93%	7.14%	100.00%		



Search Criteria

Dates	From 01/01/2016 To 12/31/2016 (mm/dd/yyyy)
Service	ILLINOIS VALLEY FIRE DIST
Crew Member Role	All
Type of Service Requested	All
Patient Disposition	All

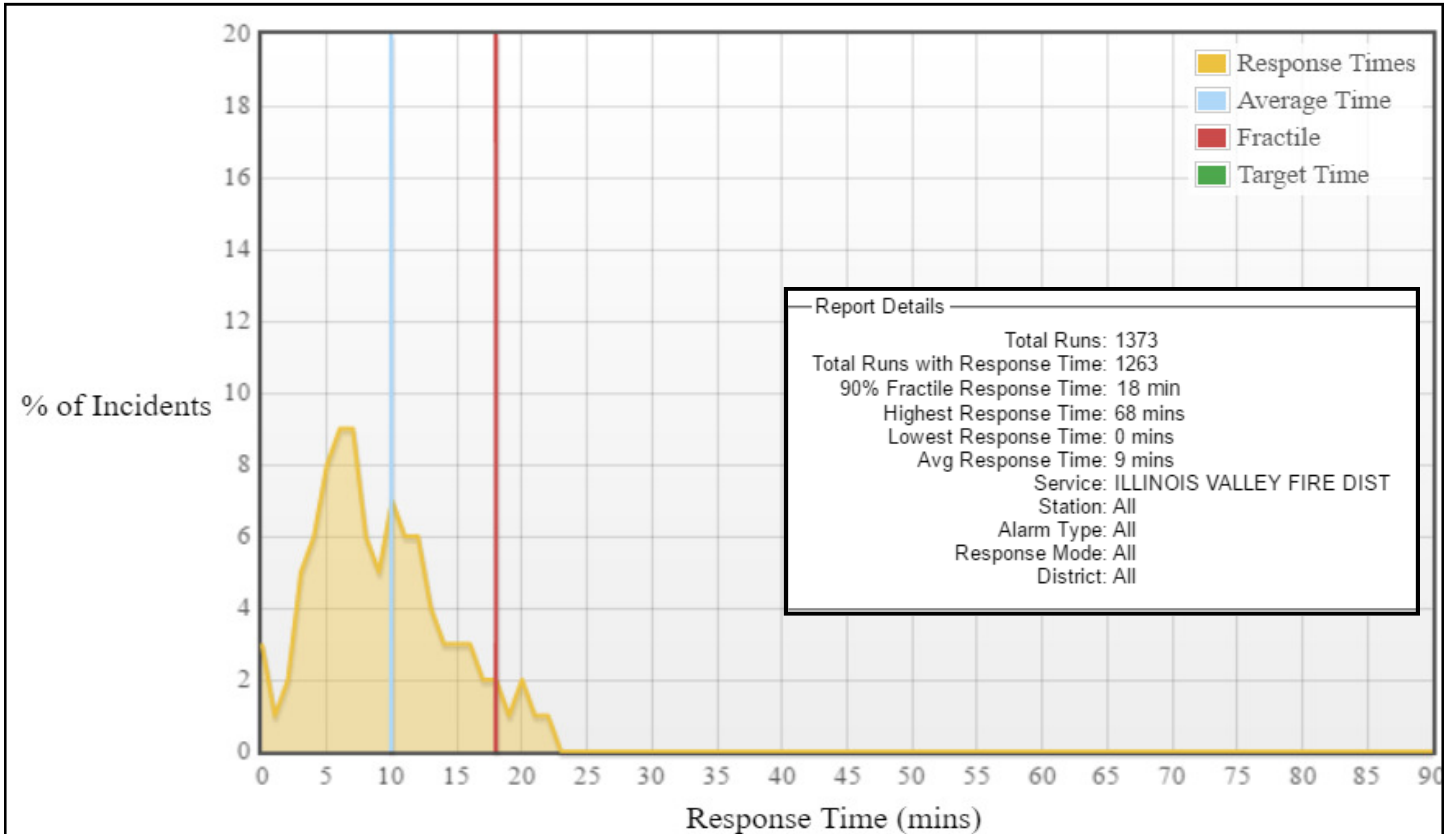


Report Description

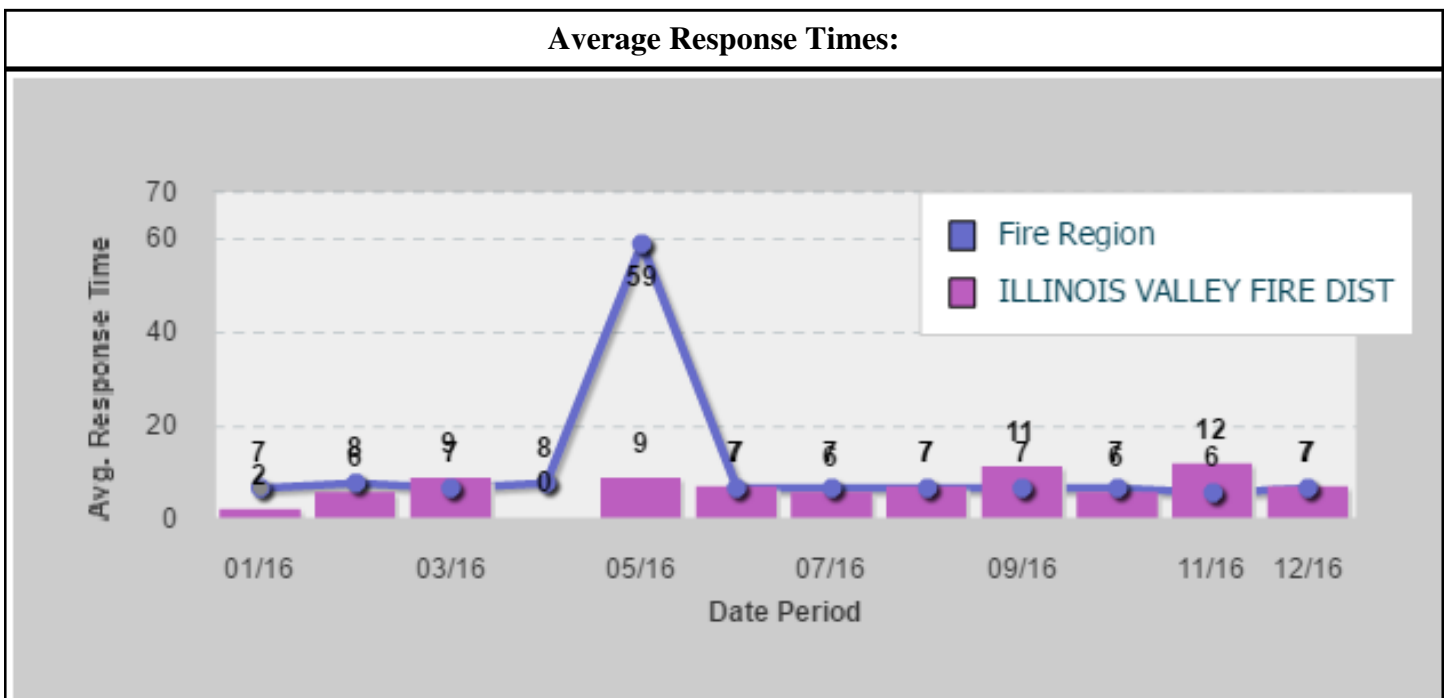
Response Times:

In 2016 our average response time for the first unit on scene was **9:00 minutes**. This average includes delayed responses which tend to skew the average higher. For example, on some calls we must await the arrival of law enforcement before entering the scene. Another example is mutual aid calls where extended travel time to the scene can be required.

Fractile Response Times:



Average Response Times:



Average Run Times Report
From 01/01/16 To 12/31/16

Enroute (Responding - Unit Notified Dispatched)

Minutes	# of Runs	% of Runs
0 - 1	40	60.61%
2 - 3	12	18.18%
4 - 5	2	3.03%
> 5	2	3.03%
Unknown	10	15.15%
Total	66	100%

Response Time (Arrive Scene - Enroute)

Minutes	# of Runs	% of Runs
0 - 5	31	46.97%
6 - 10	16	24.24%
11 - 15	6	9.09%
> 15	3	4.55%
Unknown	10	15.15%
Total	66	100%

Scene Time (Depart Scene - Arrive Scene)

Minutes	# of Runs	% of Runs
0 - 10	2	3.03%
11 - 20	5	7.58%
21 - 30	9	13.64%
> 30	28	42.42%
Unknown	22	33.33%
Total	66	100%

Transport Time (Arrive Hospital - Depart Scene)

Minutes	# of Runs	% of Runs
0 - 5	4	6.06%
6 - 10	0	0.00%
11 - 15	0	0.00%
> 15	0	0.00%
Unknown	62	93.94%
Total	66	100%

Hospital Time (Depart Hospital - Arrive Hospital)

Minutes	# of Runs	% of Runs
0 - 5	4	6.06%
6 - 10	0	0.00%
11 - 15	0	0.00%
> 15	0	0.00%
Unknown	62	93.94%
Total	66	100%

Average Run Times

Enroute	00:01:16
To Scene	00:06:24
At Scene	00:36:19
To Destination	00:00:15
Back in Service	00:00:00
Total	00:44:14

Range of Times: Lowest = 0 and Highest = 1

Annual Fires By General Property Use.

Reporting Between: 01/01/2016 - 12/31/2016
Printed On: 01/23/2017

General Use	JAN 2016	FEB 2016	MAR 2016	APR 2016	MAY 2016	JUN 2016	JUL 2016	AUG 2016	SEPT 2016	OCT 2016	NOV 2016	DEC 2016	Total
*NA	0	0	0	0	0	2	1	0	1	0	0	0	4
Assembly	3	3	2	0	1	2	2	2	0	1	0	1	17
Educational	1	0	0	0	1	1	1	0	1	1	1	3	10
Health Care, Detention & Correction	0	1	0	1	1	2	1	1	1	2	1	2	13
Industrial, Utility, Defense, Agriculture, Mining	0	0	0	0	0	1	0	0	1	1	1	0	4
Manufacturing, Processing	2	1	4	2	0	4	1	1	0	0	0	0	15
Mercantile, Business	4	4	5	3	4	1	9	7	7	2	7	8	61
Outside or Special Property	23	19	32	22	30	33	32	39	49	37	22	15	353
Property Use, other	0	0	0	0	0	0	0	1	0	0	0	0	1
Residential	64	61	82	72	53	111	72	76	62	89	62	72	876
Storage	0	2	0	0	2	6	1	3	1	1	1	4	21
Grand Total	97	91	125	100	92	163	120	130	123	134	95	105	1375

Reported Fire Loss
by year

	Fire Deaths	Fire Injuries	Fire Incidents	Fire Loss
2012	1	2	52	892,830
2013	1	4	62	2,540,240
2014	0	2	57	300,170
2015	0	1	64	623,240
2016	0	0	69	1,189,320

Emergency Medical Services:

The Illinois Valley Fire District and our partners, American Medical Response (AMR) provide basic and advanced life support to the entire fire district. AMR has the exclusive ambulance service contract for Josephine County and they station an ambulance at IVFD Station 1 for District coverage. Back up ambulances are available from their stations in Grants Pass.

We also call upon the services of Mercy Flights on a regular basis to give the citizens of the Illinois Valley the quickest emergency medical care possible.

Emergency medical calls are over 60% of IVFD's call volume. IVFD members include licensed basic life support Emergency Medical Responders and Emergency Medical Technicians. Some are licensed advanced life support Emergency Medical Technicians-Intermediate and Paramedics. Each medical responder receives continuing education every month and skill proficiency assessments.

Mutual Aid:

IVFD is a signatory to the Rogue Valley Fire Chief's Association Mutual Aid Agreement. IVFD is also on the Rogue Valley Task Force providing rapid multi-department response to large-scale incidents in Josephine and Jackson Counties.

Dispatch Services:

The 911 communications center is operated by the City of Grants Pass and provides 24 hour 911 call-taking services for a number of agencies in Josephine County, including The Illinois Valley Fire District.

Experience Levels:

The bulk of our emergency service delivery is from our volunteer members. Their experience ranges from 32-year veterans to new recruits. Our paid career personnel average is 15 years of emergency service delivery.



Stations

Station 1: 681 Caves Hwy, Cave Junction



Station 4: 5465 Holland Loop Rd, Cave Junction



Station 2: 18505 Redwood Hwy, Selma



Station 5: 4240 Lakeshore Dr, Selma



Station 3: 10 Lone Mountain Rd, O'Brien



Station 6: 8450 Takilma Rd, Cave Junction



Training

During the year 2016 Illinois Valley Fire District's members collectively trained some 4100 man hours in a myriad of routine and specialized emergency operational fields.

IVFD training is overseen by the Deputy Chief / Training Officer, Jeff Gavlik. Deputy Chief Gavlik has been the District's Training Officer since 1999.

Accreditation

The District is accredited by the Oregon Department of Public Safety Standards and Training (DPSST) as a training agency for the following disciplines:

NFPA Firefighter I
NFPA Firefighter II
NFPA Fire Apparatus Driver / Operator
Wildland Interface Firefighter (FFT2)
Advanced Wildland Interface Firefighter (FFT1)

Instructors

Our in-house instructors are Chief Officers, Lieutenants and veteran Firefighters. Five of our instructors are certified at the National Fire Protection Association (NFPA) Instructor I level, and one at the NFPA Instructor II level.

Training Schedule

Paid career staff and volunteers train together during weekly drills. Weekday evening drills last 2 to 3 hours. Volunteer members also train while on shift.

We continued performing joint training with our mutual aid partners during 1026. Quarterly, we rotate hosting trainings on structural and wildland issues.

In-House Training

The Illinois Valley Fire District provides a variety of in-house training including:

NFPA Firefighter I
NFPA Firefighter II,
Wildland S-130/190
Emergency Medical Responder,
Apparatus Driver/Operator
Vehicle Extrication

Roof Ventilation
CPR

Fire Academy

In 2016 two regional fire academies were held with 8 students from IVFD. Students received over 120 hours of instruction over a three month time period.

Outside Training

In 2016 some members received specialized training, including:

Incident Management
Public Education
Code Enforcement
Fire Investigation
Management and Leadership
Emergency Medical Services
Incident Command
Leadership

New Events for 2016:

CERT Program in effect
Youth Explorer Program
New EMTs: Pingree and Wallace
Firefighter Student Program: Pingree, Hutson
Fire station Resident Program: Pingree, Hutson



Apparatus and Equipment

Vehicle Fleet

Replaced 8954's vehicle with a 2008 Expedition
FEPPS Freightliner chassis is now 3000 gallon tender

Staff Vehicles

2011 Ford Expedition; Fire Chief
2008 Ford Expedition x 2—Div. Chief's
2001 Ford Expedition: Staff Vehicle
2005 Chevy Trailblazer: Staff Vehicle
1995 Ford F-350 Type 6: Div. Chief Logistics

Station 1

1992 Engine Western States 1000 gallon 1250 Gpm
2008 Tender Volvo 3000 Gallon 1000 Gpm
2015 Rescue Dodge Ram 5500
1994 Utility GMC 1-ton
1995 Type 6 Ford F-350 200 Gallon
1999 Rehab Ford E-Van
2012 Eagle Air Trailer

Station 2

2000 Tender Freightliner 2000 Gallon 175 Gpm
1996 Rescue Ford F-350
1996 Ford F350 – Type 6 200 Gallon
2010 Polaris 6x6
1975 Engine Ford L-975 1000Gallon 1250Gpm
1981 Engine Ford L-900 1000 Gallon 1250 Gpm

Station 3

2016 Engine BME Navistar 1000 Gallon 1250 GPM
1998 Engine BME Navistar 1000 Gallon 1250 Gpm
2004 Tender Freightliner FL120 3000 Gal 1000 Gpm
Prevention Trailer
2003 MCT Pace tandem axle Trailer
1995 Ford F350 Type 6 200 Gallon

Station 4

2000 Engine Pierce Navistar 1000 Gallon 1250 Gpm
1979 Tender L-900 3000 Gallon 250 GPM

Station 5

1976 Engine Ford L-900 1000 Gallon 1250 Gpm
1995 Tender Freightliner 3000 Gallon 600 Gpm

Station 6

1981 Tender L-900 3000 Gallon 600 Gpm
1984 Engine Ford L-900 1000 Gallon 1000 GPM

Air Packs

32 packs
46 masks

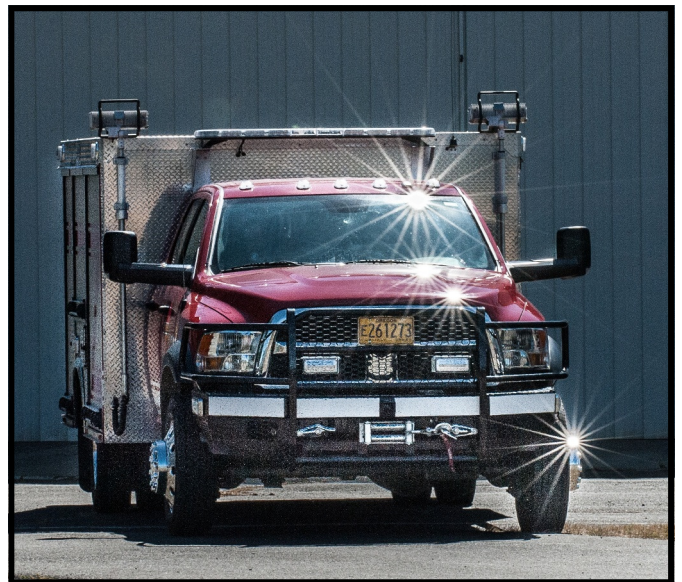
Testing

Along with keeping up with regular maintenance we also perform in-house pump and hose testing. We have our SCBA's packs and face masks, ladders, and fire extinguishers tested yearly by outside certified vendors.

In 2015 we tested 14,700 ft. of fire hose. We also conducted pump testing and all engines passed. Ladder, SCBA pack and mask testing were completed and all passed.

Grant Awards

\$3,000 SDAO grant—fencing
\$500—prevention
\$10,000—Chaney Foundation—Training
\$350,000—new engine



Public Education and Fire Prevention

Illinois Valley Fire District participates in many events throughout the year. We supply information on fire prevention, defensible space, safety awareness, drunk driving, health and wellness, etc. Public education is a valuable tool in helping the residents stay informed and safe. We also maintain a District Facebook page and webpage and try to utilize these formats to their fullest potential.



We also had many walk in families who toured the facility and learned about the District.

Annexations:

Annexation is the process of joining the fire district for protection and services. As more residences are built, or facilities are expanded, we encourage these property owners to annex into the fire district. In 2016 we accepted 23 annexations into the District.

In 2016 IVFD participated in many local activities to spread fire prevention and safety messages. Some of these included:

- 1/23 Health and Wellness fair at the senior center
- 3/27 Easter Egg Hunt
- 4/25 IVHS drunk driving presentation
- 4/28 Boys and Girls club Fire Prevention
- 5/5 Team Teaching at Evergreen Elementary
- 5/7 Car Seat clinic at the Pet Parade
- 5/21 “all grad night” at airport
- 5/25 Fire Safety Day at Siskiyou Institute
- 5/29 Flags for Veterans day
- 6/11 Hathkapasuta River Celebration
- 6/26 Oregon Caves rescue class
- 7/14 Boys and Girls Club water fun
- 7/23 IVFD Company Picnic
- 7/26 New Engine dedication at station #2
- 7/27 Head Start fire prevention message
- 8/15 Home Depot fire safety event
- 9/3-5 Labor Day celebration at Jubilee park
- 10/20 IVHS Career training
- 10/31 Happy Halloween at station #1
- 12/10 Santa Clause visited us at Station #1
- Nov—Dec Canned food drive

Station Tours:

Children are given the opportunity to tour the fire station and see the apparatus and equipment that we use. In addition, we take this opportunity to discuss important information about fire safety. These discussions are outlined by age groups. In 2016 the Fire District gave 3 station tours to school classes.

Facility Inspection:

Illinois Valley Fire Prevention is responsible for all the facilities located within the District. The position is currently staffed by a Division Chief / Fire Inspector. Fire inspections are scheduled and accomplished as needed and as time allows.

In 2016, Lt. Latva performed approximately 15 Fire Wise fire prevention visits. These visits included information on fuels reduction and defensible space around your home or property.

Burn Permits:

In 2016, the residents of the Illinois Valley were able to receive information on safe burning practices, burning regulations, and burn permits from the comfort of their homes through our online burn permits. This creates a fuel savings for the public and passes on valuable fire safety information. The information and permits were also available at the administration office for those who are not connected. In the 2016-2017 burn season there were approximately 1050 residential burn permits issued.

Smoke Alarms:

In 2016, the fire district installed 55 smoke detectors and continue to have this life saving program available through the Red Cross smoke detector program. Due to budget constraints this program will no longer be continued through IVFD. This information is available on our website as well as asking any of our staff here at IVFD.

Emergency Management

The Illinois Valley is prone to natural disasters such as flooding, earthquakes and wildfires. Preparedness is critical for saving lives. The Fire District works closely with Josephine County Emergency Management staff to insure we are prepared for a disaster.

Available Programs:

A few of the programs that we provide information for are: Disaster Registry, Citizen Alert, and Evacuation information (Ready, Set, Go).

The Disaster Registry is a program in Jackson and Josephine Counties that gives special assistance in an emergency. If you need outside help to safely leave your home or special notification about the need for evacuation, due to an impairment, this program is available by visiting www.rvcog.org. You can also contact the Rogue Valley Council of Governments at 541-664-6674.

Citizens Alert sends information by mobile phone, work phone, email, or text messaging in case you are not at home when an emergency strikes. To sign up please visit www.co.josephine.or.us/alert.

Ready, Set, Go information helps residents prepare for evacuation. It informs citizens what “green, yellow, and red” warnings mean as well as how to prepare for each. www.jacksoncounty.org/alert or www.co.josephine.or.us/alert.

EOC:

IVFD houses a Josephine County alternate Emergency Operation Center (EOC). The alternate EOC would be activated if the Illinois Valley became cut off from the rest of the county, or in the case of a large scale Illinois Valley event.

ARES:

The Josephine County Emergency Communications (JCEC) is part of the state wide ARES which provides amateur radio emergency communications for the alternate EOC and on scene of a disaster. Their equipment is housed at IVFD Station #1. They provide a critical link to the outside world if telephone communications were to be interrupted.

BE READY

Evacuation Plan

- ◆ Make a plan, and be sure everyone in your family understands it.
- ◆ Assign tasks to each family member for what to do during Level 1 (Ready), Level 2 (Set) and Level 3 (GO!) evacuations.
- ◆ Have an evacuation plan for your pets and livestock. If it isn't safe for you, its not safe for them.
- ◆ Designate a meeting place – this could be a friend or family member's house, or an evacuation shelter.
- ◆ Choose an out-of-the-area contact person to relay information about your welfare to family and friends and to keep your phone lines open.

House Preparation

- ◆ Make sure house numbers are visible from the street.
- ◆ Make sure driveways are wide enough for emergency vehicles to enter (10-12 feet wide).
- ◆ Prepare your defensible space.

Emergency Kits - Keep them ready at all times in your home and vehicle.

- ◆ Include supplies for you and everyone who lives in your home or visits regularly.
- ◆ Include supplies for your pets .
- ◆ Include copies of important documents, phone contact lists, family photos, household inventory lists , and any portable valuables .
- ◆ Keep your vehicles filled with gas.

BE SET

- ◆ Keep pets and livestock ready to go in case you need to evacuate in a hurry.
- ◆ Be sure to have your photo ID or something showing your current address in case you need to access an evacuated area.
- ◆ Monitor local television and radio stations for updates.
- ◆ Move propane BBQ appliances away from structures (during wildfires).

GO!

- ◆ Leave house lights on and windows closed.
- ◆ Let your emergency contact and/or family members know where you are going.

IVFD Goals and Accomplishments

2016 Accomplishments:

- Explorer Program
- Completed Standard of Cover
- Obtained a grant and purchased a new engine for Selma. (granted in 2015/completed in 2016)
- Website Upgraded
- New maintenance and training building plan developed
- Institute rank of Engineer for Firefighter advancement opportunities
- Establish an officer development program
- Firefighter II academy
- NFPA Fire Instructor I training
- Pre-planning for business target hazards—not done
- Install audio/visual cabinet in board room
- Helicopter landing pad at Station 4
- Install generators at Stations 2 and 3
- Put a modified reimbursement stipend in place for shift based volunteers

2017 Goals:

- Develop a funding method to replace Fire Station 5, Lake shore
- Replace an outdated tender with a 3000 gallon re-furnished military chassis
- Pass a levy to hire 4 firefighter/EMT's
- Develop a comprehensive master plan looking out 10-15 years
- Recruit for additional volunteer firefighters
- Complete mobile command post project
- Complete training facility project
- Develop a pre-fire planning program for business and high risk facilities.
- Replace one type 6 engine
- Continue to expand student/resident program
- Expand CERT's role in the fire district
- Provide staffing for an alternate EOC
- Continue to recruit for the Explorer program
- Install computers on front line engines
- Develop a water supply database on computer



IVFD Annual Awards Banquet

Officer of the Year: Lt. Joe Latva

Firefighter of the Year: Austin Elesky

Rookie of the Year: Jay Webb

Hall of Flame: Dale Sandberg

Chief's Award: Jason Bayless and Brian Pingree

CERT member of the Year: Charlie Foutch

Support Services award: BJ Latva and Q Lackey

Individual Citations: Steve Knight, Ned Booth, and Division Chief Sherman





IVFD is sponsoring a **Community Emergency Response Team (CERT)**. This group of 22 dedicated volunteers is an integral part of Josephine County's response to community-wide emergencies and disasters. In the case of a large scale disaster, CERT volunteers are trained to help their neighbors until the arrival of first responders.

In preparations for an emergency, CERT members help their families, neighborhoods and communities prepare for disaster. Several neighborhood door-to-door exercises were conducted by our CERT members to help educate citizens on how to educate and train for possible evacuations in case of wildfire or other emergencies. For example: handing out information

on evacuation routes, preparing a "go bag" for each family member, or how much food and water to keep on hand for an emergency.

During an emergency, CERT members assist others in their neighborhoods or workplaces, when professional responders are not immediately available. Areas of training include: CPR, use of AEDs, simple fire suppression, basic first aid, as well as search and rescue techniques. CERT members may also assist first responders as needed. The addition of the CERT vehicle will allow the team to arrive at an event, with needed support equipment and supplies, to relieve first responders from their less critical activities.

CERT members, in the 2016 season, assisted with traffic control on wildland and structure fires as well as traffic accidents. They also provided staffing for public information booths as needed.

The IVFD CERT is part of a regional CERT group which includes four Jackson County CERT entities. This regional CERT organization shares information and training opportunities; giving them the ability to respond as needed in the Southern Oregon region.





Fire and Emergency Services Career Exploring:

Fire and EMS Career Exploring is open to young men and women from our local schools with an interest in learning more about careers in the field of fire or emergency services.

Fire and EMS Exploring is a classroom and hands-on program that exposes young people to fire and emergency services. The lessons will cover items such as First Aid, Fire Safety, Emergency Medicine, Leadership, Teamwork, and so much more. It helps develop emergency management skills as well as physical fitness.

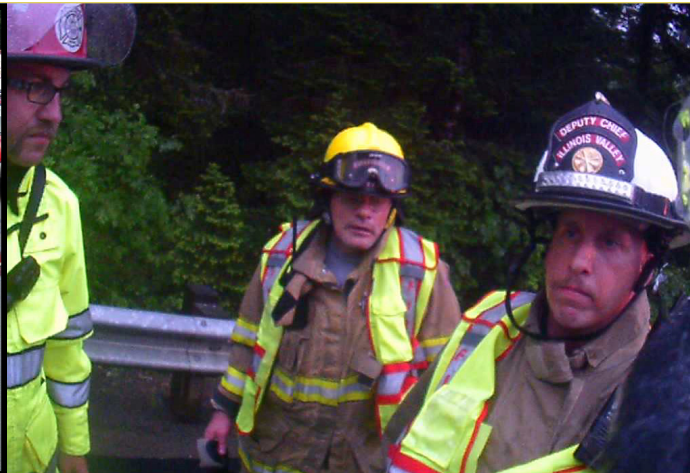


The Explorers will have opportunities to participate in local and national competitions, community events, and real firefighting scenarios in a training setting.

You will learn about the educational requirements for a career in Fire and EMS and will receive tangible advice on the steps you could take now to prepare and position yourself for a successful career in the field of fire and/or emergency services.

Fire and EMS Career Exploring offers the following benefits: Improved self-confidence, Leadership experience, social network development, Fun and Exciting “hands-on” career experiences, Community service opportunities, and College and Career Readiness Preparation.





Illinois Valley Fire District
681 Caves Hwy
Cave Junction, OR 97523

Office Hours
Monday—Thursday
9:00 to 4:00