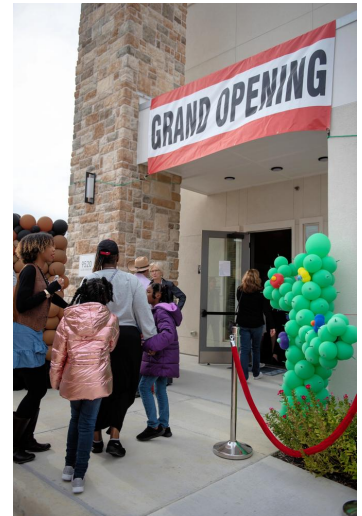


Fort Worth Housing Solutions Cuts the Ribbon on Palladium Fort Worth

Date Published: October 30th, 2019

On October 16, Fort Worth Housing Solutions (FWHS) and Palladium USA **celebrated**



(<https://clpha.org/sites/default/files/documents/Palladium%20opening%20press%20release.pdf>) the grand opening of Palladium Fort Worth, a 150-unit community with more than half of its apartments affordably priced for families earning up to 60 percent of the area's median income. The energy-efficient units contain stainless steel appliances and granite countertops, and community amenities include a swimming pool, gazebo, and a clubhouse with an expansive fitness center, business center, and children's activity room. All of the property's units are currently leased.


Fifteen of Palladium Fort Worth's units are designated for families who relocated from Butler Place Apartments, FWHS's public housing property, through the Rental Assistance Demonstration (RAD) program. FWHS and Palladium USA developed the community with help from 9% Low-Income Housing Tax Credits.

"Palladium Fort Worth helps meet our city's urgent need for housing that is reasonably priced for the workforce," said Mary-Margaret Lemons, FWHS president. "We're pleased with our partnership with Palladium USA and are especially proud of the property's high quality and proximity to major employers like Lockheed Martin."

The western-themed ribbon-cutting event included a catered cook-out, resident testimonials, a photo booth, a mechanical bull, a bounce-house, balloon sculptures, hay bales, and door prizes.



Document(s):

 Press Release: Officials to celebrate opening of a \$30 million mixed-income housing community in far west Fort Worth (<https://clpha.org/sites/default/files/documents/Palladium%20opening%20press%20release.pdf>)

Related Organization(s):

Fort Worth Housing Solutions (/members/239)

Topic(s):

Community Development (/topic/community-development)

Resource type(s):

Members Making News (/resource-type/members-making-news)

ABOUT CLPHA (/ABOUT/ABOUT-CLPHA)

MEMBERS (/OUR-MEMBERS)

PROGRAMS (/PROGRAMS)

LEGISLATIVE & POLICY (/LEGISLATIVE-POLICY)

NEWS & EVENTS (/NEWS)

PRESS (/PRESS)

HOUSINGIS.ORG (HTTP://WWW.HOUSINGIS.ORG) | BECOME A MEMBER (HTTPS://WWW.HOUSINGIS.ORG/OUR-MEMBERS/BECOME-A-MEMBER)

a

Council of Large Public Housing Authorities
455 Massachusetts Ave NW, Suite 425
Washington, DC 20001
202-638-1300

(HTTPS://WWW.HOUSINGIS.ORG/OUR-MEMBERS/BECOME-A-MEMBER)

OF-
LARGE-
PUBLIC-
HOUSING-
AUTHORITIES)

Copyright 2022 Council of Large Public Housing Authorities | Policies & Terms of Use (/about/policies)