

Adaptation criterias

- Ultra permeable hybrid lens:
 - Post graft
 - Post refractive surgery
 - Symptomatic AirKone Oblate wearer

Advantages

- Better centration
- Better adjustment
- Easy to fit

Technical informations

Material	ESiH (available in E200)
Ø _T	14.90 mm (15.50 mm available)
Ø _{RGP}	10.00 mm
Base curve BC	From 7.00 to 11.00 mm in 0.05 mm steps
Eccentricity	From -1.5 to 0 in 0.1 steps (standard -0.5)
Soft skirt J	J 0.0 (standard skirt) From -1.0 to +1.0 in 0.5 steps
Power P	From -40.00 to +40.00 D in 0.25 D steps

Available in back toric and front toric

Wear and care

Wear	Renewal every 6 months, daily wear
Care	LCS Clean (lenses cleaner) + soft multipurpose solution or peroxide
Handling	Insertion: instill 2 drops of hydration solution (preservative free) in the lens Removal: like an RGP lens, with a plunger

EyeBrid™ Oblate

Silicone Hydrogel hybrid contact lens
for post graft and post refractive surgery

Fitting

First trial lens parameters:

BC = Flat K - 0.20 mm

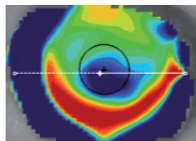
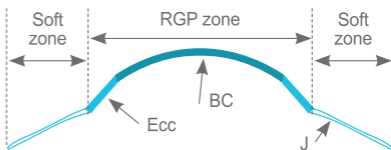
P = Spectacle refraction + vertex distance

Example:

Topography : 9.10 / 8.59

Refraction : - 3.75 (- 2.75)_{160°}

Prescription : EyeBrid Oblate 8.90 / - 4.75

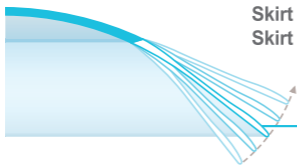


Fitting assessment after 15 minutes of wear

1. Control visual acuity
2. Do a slit lamp exam and evaluate as a soft lens

If satisfactory, leave the patient with the lenses

If centration and/or mobility are unsatisfactory, change the skirt



Skirt too steep? Flatten skirt by J + 0.5

Skirt too flat? Steepen skirt by J - 0.5

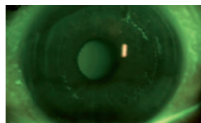
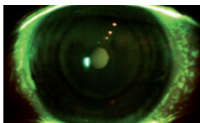
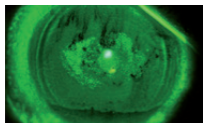
+ 1.0
+ 0.5
0.0
- 0.5
- 1.0

Check staining at removal after several hours of wear

Too flat

Optimal

Too steep



Steepen BC by - 0.10 mm

Prescribe

Flatten BC by + 0.10 mm
or flatten EL by + 0.5

www.lcsorders.com
orders@laboratoire-lcs.com

CE 1639



LCS

WWW.LABORATOIRE-LCS.COM