



¾" Single Cell Cellular Shades with Motorized Lift:
Couture, Peaceful Gray 0135

A Neutral Palette

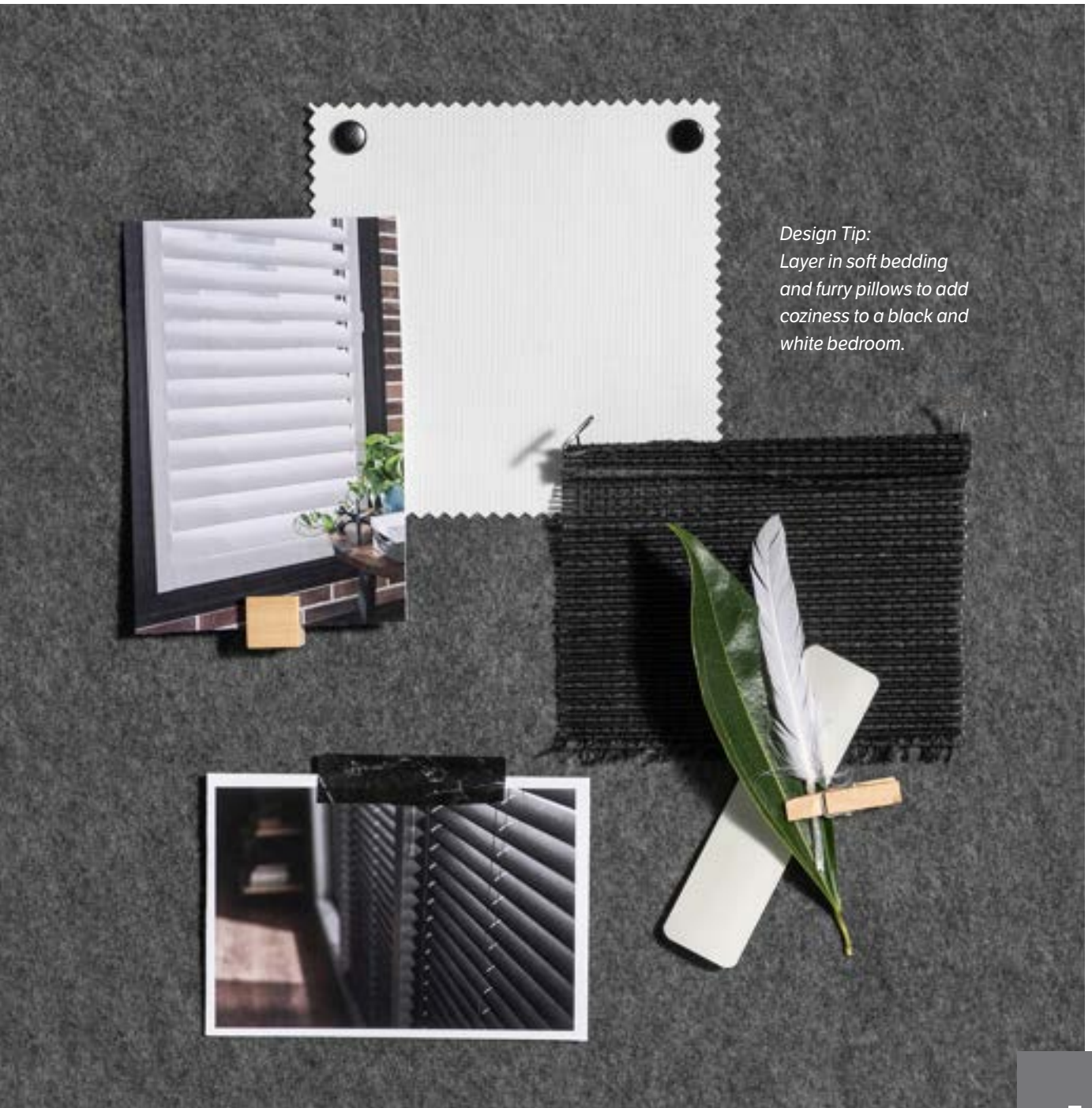
Whether you're interested in creating a soothing tonal palette of creams or a dramatic backdrop of dark gray, neutrals offer a wide variety of styles and options.

Every detail is considered in Graber's neutral-colored window coverings, from cellular shades to sheer verticals.



Dramatic black and white will always be in style. This glamorous look mixes elegant lighting with soft window treatments and a cozy rug.

Black & White



*Design Tip:
Layer in soft bedding
and furry pillows to add
coziness to a black and
white bedroom.*

Left: Solar Shades with Continuous-Loop Lift: Chronicles, Tuxedo 49204; Drapery with Reverse Pleats

Black & White



Vinyl blinds are a functional choice that also offer style in a Midnight colorway.

Choose solid colors in cellular shades or vertical blinds, or add a graphic element with soft treatments that mix black and white.

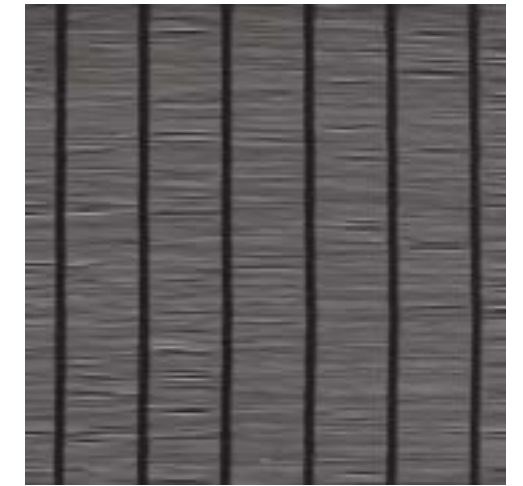
1.



2.



3.



4.



5.



6.



1. Cellular Shades
Sanctuary, Gray Fedora 1455

2. Horizontal Aluminum Blinds
Ribbed Black 763

3. Natural Shades
Kelton, Jet Black 25892

4. Soft Treatments
Unscripted, Newsprint 0910

5. Vertical Blinds
Grotto, White 6585

6. Solar Shades
Exposition, Consummate 48501

Light & Bright



Layered shades in the brightest white create a calming backdrop to the room and help diffuse sunlight.



Design Tip:
Use a variety of white and cream hues for window coverings and furniture to create a look that's elevated and inviting.

Light & Bright



Sheer vertical blinds mix the function of verticals with the beauty of sheers, perfect for bedrooms and living rooms.

Whites come in every tone imaginable, whether you are looking for a cooler white in cellular shades for an office or warmer white soft treatments for a nursery.

1.



4.



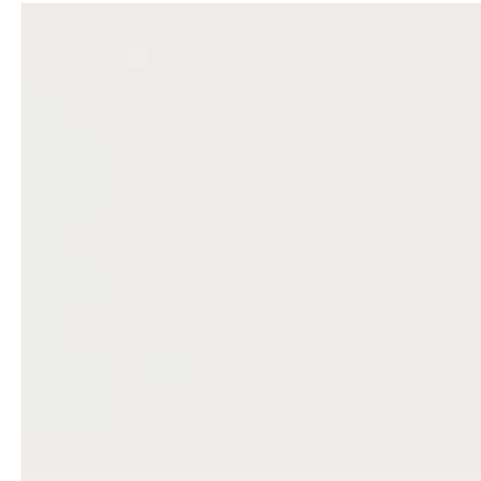
1. Cellular Shades
Sanctuary, Whisper White 0110

4. Roller Shades
Empirical, White Shimmer 15501

2.



5.



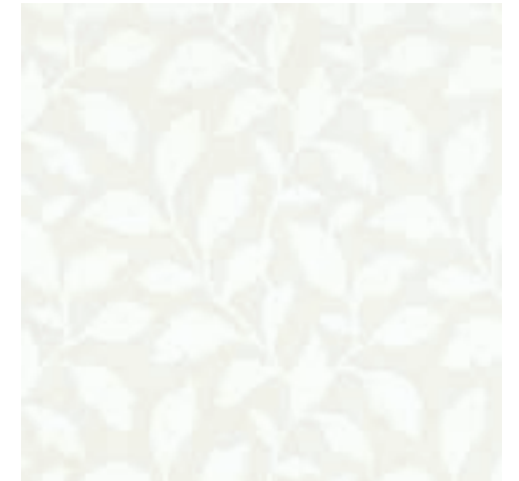
2. Vertical Blinds, Horizontal Vinyl Blinds
Fiber, White 3973

5. Horizontal Aluminum Blinds
Blizzard 630

3.



6.



3. Natural Shades
Revelry, Alabaster 80746

6. Soft Treatments
Edgecombe, Arctic 5580

Left: Sheer Vertical Blinds with Standard Chain/Cord Controls and Split Stack: Dijon, Extra White 2220 and 7½" Regal Wood Cornice with Keystone: Snow White, 1850



Mixing gorgeous gray wood blinds with exposed brick is unexpected and elegant.

Gorgeous Grays



Design Tip:
Plants don't need to be green. Choose dark colored plants for a moodier vibe.

Left: 2" Wood Blinds with Cordless Lift/Wand Tilt: Harbor Grey 1761 with 3" Classic Valance

Gorgeous Grays



Brass accents really shine against deep gray pleated shades and matching walls.

Soft treatments and roller shades always look amazing in gray. For something more unique, try natural shades in Soft Coal.

1.



2.



3.



4.



5.



6.



1. Soft Treatments
Leafprint, Stone 0751

2. Vertical Blinds
Sheffield, Eclipse 0205

3. Horizontal Aluminum Blinds
Graphite 680

4. Natural Shades
Kelton, Soft Coal 25893

5. Pleated Shades
Desert, Strata 1536

6. Roller Shades
Consummate Silk,
Posh Platinum 15902

Left: 2" Pleated Shade with Cordless Lift: Debonair, Haberdasher Gray 3220



Urban Oasis



Design Tip:
A brick tile backsplash is a great way to add a little urban loft style into your kitchen.

Left: Roller Shade with UltraLite Cordless Lift, Fabric-Wrapped Hem Bar: Levity: Fortress 21414, and Decorative Hardware: Brushed Graphite

Urban Oasis



Lean into loft style with simple solar shades in muted colors. Solar shades offer UV protection and cut down on glare in rooms with lots of sunlight.

Functional options don't have to be boring. Choose patterned roller shades, metallic aluminum blinds, or textured vinyl blinds for a functional AND stylish finishing touch.

1.



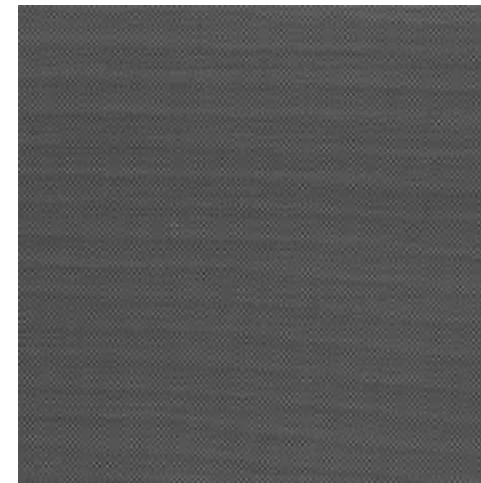
2.



3.



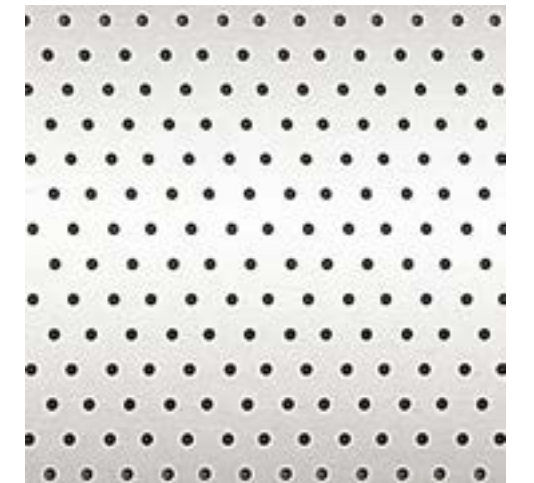
4.



5.



6.



1. Roller Shades
Levity, Fortress 21414

2. Roller Shades
Empirical, Complex Carbon 15502

3. Horizontal Vinyl Blinds
Georgetown, Smithsonian 3073

4. Solar Shades
Plexus 3%, Penumbra 47708

5. Horizontal Aluminum Blinds
Brushed Aluminum 121

6. Horizontal Aluminum Blinds
Perforated Brushed Aluminum 121P

Left: Solar Shade with Motorized Lift, Fabric-Wrapped Hem Bar: Harmonics, Titanium 10111, and 4" Fascia: Black

Outdoor Sanctuaries



*Design Tip:
Don't forget the decor!
Outdoor throw pillows
and candles are great
ways to add personality
to your patio.*



*Create an outdoor living space complete with plush seating,
a cozy fireplace, and solar shades for privacy and light control.*

Right: Exterior Solar Shades with Continuous-Loop Lift: Plexus 3%, Nutley Pier 47709

Outdoor Sanctuaries



White draperies add elegance and privacy to any outdoor space, creating a sanctuary all your own.

Exterior solar shades and soft treatments add the perfect finishing touch for outdoor living spaces.

1.



4.



1. Exterior Solar Shades
Standard Weave 10%,
Chiseled 48408

4. Soft Treatments
Manning, Charcoal 5172

2.



5.



2. Exterior Solar Shades
Vanguard 5%, Chrome 48315

5. Soft Treatments
Iconic, Fog 5591

3.



6.



3. Exterior Solar Shades
Plexus 1%, Soapstone 47601

6. Soft Treatments
Grayson, Pumice 5653

Left: Rod Pocket Drapery: Manning, Pumice 5173 with Tiebacks

Peaceful Patterns



Peaceful patterns in bright white add an element of style to simple decor.

Tonal patterns come in a variety of products, from pleated shades to roller shades.

1.



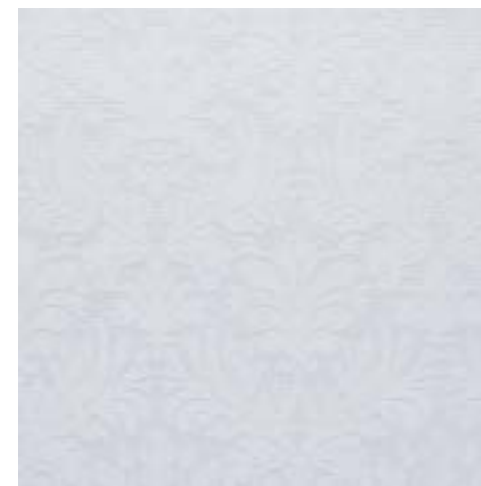
2.



3.



4.



5.



6.



1. Pleated Shades
Imperial, Tropical White 4163

2. Roller Shades, Sliding Panels
Arboretum BO, Serene 13701 (RS),
T13701 (SP)

3. Soft Treatments
Ainslie, Arctic 5360

4. Roman Shades
Versailles, White 3265

5. Pleated Shades
Tuvalu, Wisteria White 1153

6. Soft Treatments
Rimini, Tranquility 5942

Left: 1" Bottom Up/Top Down Pleated Shades with Cordless Lift: Imperial, Tropical White 4163

Carefully Crafted

*Design Tip:
Mix wood
tones for a truly
designer look.
Try blonde wood
shutters with
medium toned
furniture, or
vice versa.*



Natural wood shutters bring the outdoors in with gorgeous wood grains and the warmth that only real wood can offer.

Right: 3½" Wood Shutters with Hang Strip, Center Divider Rail, and Hide-A-Tilt™: Knotty Pine 1515

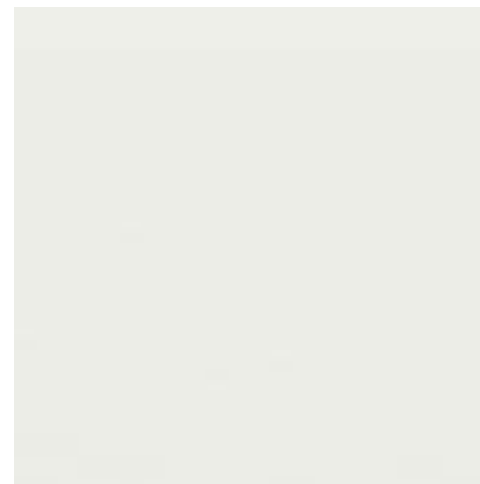
Carefully Crafted



White composite and wood shutters add classic style and are a clean look for kitchens and dining rooms.

Whether you prefer to see the wood grain or would like something painted, these wood shutters are all gorgeous options for a hand-crafted look.

1.



2.



3.



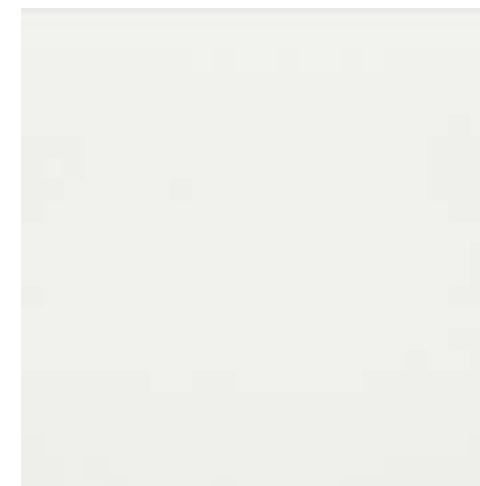
4.



5.



6.



1. Wood Shutters
Snowflake 1603

2. Wood Shutters
Stepping Stone 1889

3. Wood Shutters
Timeless Grey 1847

4. Wood Shutters
Grey Beige 1817

5. Wood Shutters
Natural 1007

6. Composite Shutters
Silk White 2922

Left: Kitchen: Composite Shutters with 3½" Louvers, Direct Mount, and Standard Tilt: Base White 2051
Dining Room (Top): Wood Arch Panel Shutters with 3½" Louvers, Standard Z-Frame, and Standard Tilt: Base White 2051
Dining Room (Bottom): Wood Shutters with 3½" Louvers, Standard Z-Frame, and Standard Tilt: Base White 2051



3" Sheer Shades with Continuous-Loop Lift: Glessner Woven, Champagne 6183, and Fabric-Wrapped Cassette



Sheer Elegance

Go from sheer and clear to private and serene in seconds. Graber Sheer Shades gently filter light for an airy, luxurious look.

Their elegant woven fabrics are never glued, always crafted with care. And our coordinating fabric-wrapped cassette provides a finished look—at no extra charge.



Top: 3" Sheer Shades with Continuous-Loop Lift: Glessner, Portico 6101
Bottom: 2" Sheer Shades with Continuous-Loop Lift: Marisco, Bechemel 6200, and Fabric-Wrapped Cassette